

Auburn Mountainview High School

2013-14 School Performance Report

"Home of the Lions"



OUR SCHOOL BUILDING

Auburn Mountainview High School is approximately 183,000 square feet with a field house of 8,400 square feet and a green house of 2,400 square feet. Also included on site is a state-of-the-art theatre that seats 400 patrons. The school has parking for 600 vehicles and 30 buses.

Auburn Mountainview High School opened its doors to students in the fall of 2005. The school is situated on the highest point of the area commonly referred to as Lea Hill and has beautiful views of the surrounding mountain ranges of the Cascades and Olympics from the two-story brick building as well as the athletic fields. Arthur Jacobsen Elementary School is adjacent to the lower campus.

Auburn Mountainview High School houses 31 general classrooms, five computer labs, seven science classrooms, 16 specialty rooms (including a state-of-the-art fitness/weight room facility), career center, library, main and auxiliary gymnasiums, and a full-service kitchen with supporting 600-seat commons area. Outside there are six lighted tennis courts, three lighted synthetic turf fields (football/soccer/track/softball/baseball) and two practice fields. This year we supplemented classroom space with a double portable that currently houses two general classrooms, including our new JROTC program.

Last year, the facility housed over 1,500 students in grades 9-12. The school colors are royal blue, orange, grey and white, which are proudly used in varying combinations through the building, on uniforms and on clothes to display the Lion mascot.

ACHIEVEMENT/AWARDS:

Awards and recognition of achievement are granted through the district, state and national level for improvement, overall excellence and special recognition. Below are awards received by our building:

- 2013 Linda Cowan Schools of Distinction Award
- 2009 Linda Cowan Schools of Distinction Award
- 2009 Washington Achievement Award

ABOUT OUR SCHOOL

Auburn Mountainview High School is situated at the top of Lea Hill and resides on the edge of the Auburn School District. The campus was built on 40 acres and is located one mile south of Green River Community College. Auburn Mountainview High School has two main entrances which can be accessed through 124th Avenue Southeast or 132nd Avenue Southeast. As its name suggests, Auburn Mountainview High School has beautiful views of Mt. Rainier, the Cascade Mountains and the Olympic Mountain ranges. Auburn Mountainview High School shares the Lea Hill area with three elementary schools and one middle school. The feeder schools include Rainier Middle School and a portion of Cascade Middle School. Being close to the Kent boundary, Auburn Mountainview High School also services numerous students from the Kent School District. Auburn Mountainview High School's beautiful facilities include an expansive student Commons, the Theatre at Auburn Mountainview (T.A.M.) and field turf athletic grounds. The school is used extensively to support community gatherings including the arts, athletics and recreation.

Student Information

Enrollment (October 2012)	1,490
Enrollment (May 2013)	1,466

Gender (October 2012)

Male	50.3%
Female	49.7%

Race/Ethnicity (October 2012)

American Indian/ Alaskan Native	0.7%
Asian	8.0%
Pacific Islander	1.5%
Asian/Pacific Islander	9.5%
Black	9.0%
Hispanic	13.1%
White	61.9%
Two or More Races	5.8%

Special Programs

• Free/Reduced Price Meals (May 2013)	40.2%
• Special Education (May 2013)	6.6%
• Transitional Bilingual (May 2013)	5.5%
• Migrant (May 2013)	0.0%
• Section 504 (May 2013)	2.9%
• Foster Care (May 2013)	0.0%

Other Information

Adjusted 4-Year Cohort Graduation Rate (Class of 2012)	92.1%
Adjusted 5-Year Cohort Graduation Rate (Class of 2011)	88.6%
Mobility Rate (2012-13)	18.0%

Teacher Information (2012-13)

Classroom Teachers	69
Average Years of Teacher Experience	14.3
Teacher's with at least a Master's Degree	66.7%

Auburn Mountainview High School 2013-14 School Performance Report

ASSESSMENT

Testing Students in Washington State

Washington uses the grades 3-8 Measurements of Student Progress (MSP), the High School Proficiency Exam (HSPE) and End-of-Course (EOC) exams to test its students. The HSPE and EOCs are used as the state's high school exit exams.

For English language learners (ELL), the state translates the math and science exams into six languages (Spanish, Russian, Korean, Chinese, Vietnamese and Somali). Students can listen to the test questions on a CD, but must answer in English. This covers about 80 percent of the ELL population in our state.

Measurements of Student Progress (MSP)

The MSP is the state's exam for students in grades 3-8. Testing is one subject per day, with the writing test occurring on two days. Students are tested in reading (grades 3-8), math (grades 3-8), writing (grades 4 & 7) and science (grades 5 & 8).

High School Proficiency Exam (HSPE)

HSPEs are comprehensive exams that measure the basic proficiency of high school students in reading and writing, and serve as the state's exit exams in those subjects.

Students must pass one HSPE in reading and one in writing to satisfy a portion of the graduation assessment requirements.

End-of-Course (EOC) Exams

EOCs measure the knowledge of students in algebra 1/integrated math 1, geometry/integrated math 2 and biology when they complete each course. They serve as the state's exit exams for math and science.

Students in the classes of 2013 and 2014 must pass one math EOC in algebra 1/integrated math 1 or geometry/integrated math 2 to satisfy a portion of the graduation assessment requirements.

Students in the class of 2015 and beyond must pass one math EOC in algebra 1/integrated math 1 or geometry/integrated math 2, and the biology EOC to satisfy a portion of the graduation assessment requirements.

Washington Alternate Assessment System (WAAS)

About one percent of students participate in the WAAS, a challenging program for some students in special education.

Washington English Language Proficiency Assessment (WELPA)

The WELPA annually assesses growth in English language development by the state's English language learners. This assessment tests reading, writing, listening and speaking knowledge and skills.

2012-13 HSPE Results for Auburn Mountainview

Grade Level	Reading	Math	Writing	Science
10th	87.7%	See EOC Below	87.8%	See EOC Below

Grade Level	EOC Math Year 1	EOC Math Year 2
All Grades	75.8%	87.9%

Grade Level	EOC Biology
All Grades	83.2%

FINANCIAL RESOURCES

<i>Auburn School District Funds Spent Per Student for 2012-13</i>	
Total Expenditures (includes salaries)	\$9,683.79
Supplies and Materials	484.39
Equipment	16.37

<i>Auburn Mountainview 2012-13 Budget Funds Spent Per Student (not including salary)</i>	
Books and Supplies:	
Basic Education	\$34.56
Special Education	40.64
Vocational Education	1276.60
Library	3.00
Field Trips	1.80
Administrative Supplies	2.00

Legal Notice

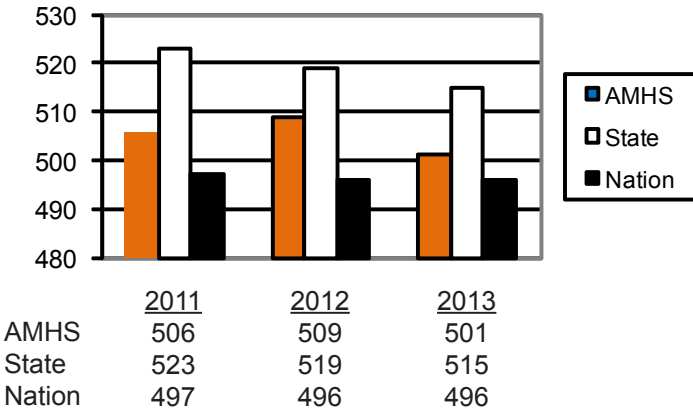
Auburn School District complies with all federal rules and regulations and does not illegally discriminate on the basis of age; gender; race; color; creed; religion; national origin (including language); sex; sexual orientation including gender expression or identity; honorably discharged veteran or military status; the presence of any sensory, mental, or physical disability; the use of a trained dog guide or service animal; and provides equal access to the Boy Scouts and other designated youth groups. Inquiries regarding compliance procedures may be directed to: Tim Cummings at (253) 931-4932, Title IX Officer and Section 504 and ADA Coordinator.

SAT AND ACT TEST RESULTS:

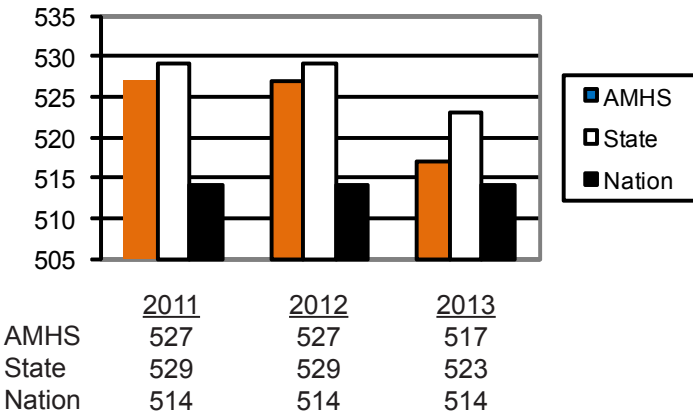
Auburn, State and National Average Scores

Auburn Mountainview High School summary results from the Scholastic Aptitude Test (SAT) for college-bound seniors are reflected below. The SAT has been used since the 1920s to help determine a high school student's college preparedness.

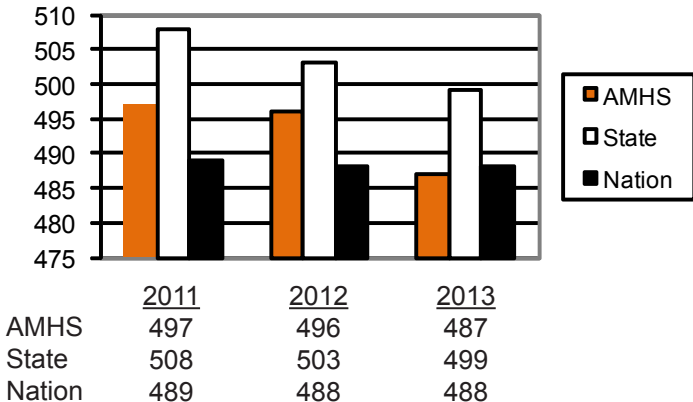
Critical Reading SAT



Math SAT

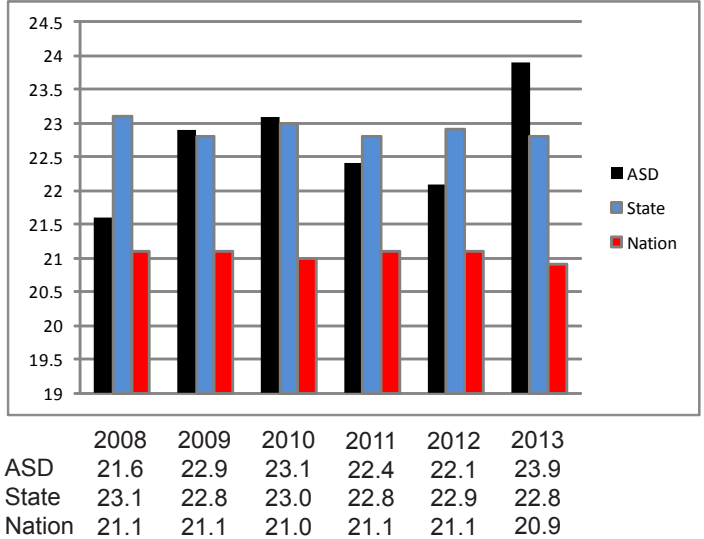


Writing SAT



ACT Results

The ACT is designed to assess high school students' general education development and their ability to do college level work. Scores are reported on a scale of 1 (low) to 36 (high).



Auburn Mountainview Improves on the Washington Achievement Index

Auburn Mountainview High School has improved significantly on the Washington Achievement Index-a comprehensive measurement of how schools in Washington are performing over the previous two years. The significant academic improvements affirm that Auburn schools are making continuous growth in student achievement.

2008-09	2009-10	2010-11	2011-12
3.63	4.30	4.65	4.70

MISSION STATEMENT

In a mutually respectful and safe community, each student will

- Achieve high standards of learning
- Demonstrate responsible citizenship
- Value lifelong learning

VISION STATEMENT

The vision of Auburn Mountainview High School is to develop in students the skills and attitudes that will maximize their potential for lifelong learning and ethically responsible decision making.



Auburn Mountainview High School 2013-14 School Performance Report

SCHOOL IMPROVEMENT PLAN

Auburn Mountainview High School is in its ninth year with students and completed the third fully revised School Improvement Plan during the 2012-13 school year. This task was accomplished through the work of a committee of 10 teachers, administrators and parents. They used assessment tools; state expectations; surveys of staff; community and students; and compiled data on Auburn Mountainview High School students and their accomplishments to develop SMART goals and action steps.

Three goals were established centered on creating student success in reading, writing, math, and on-time graduation. Each of these goals has action steps and specific targets for improvement and methods to assess success in meeting each individual goal. Data is collected throughout the school year on each of our three goals with built-in evidences of implementation, evidences of impact, resources, and responsibility.

The senior class will be presenting their Portfolio Presentations on April 22, 2014, as a final activity for meeting the graduation requirement of a culminating portfolio. The culminating portfolio contains such items as several "best works;" a four-year plan and beyond high school plan; job acquisition documents; community service; and skills, certifications and awards earned.

In 2011, Auburn Mountainview High School implemented CORE/Choice schedule; a four times weekly 25-minute intervention period that occurs between 2nd and 3rd periods. This directs mandatory academic support time for students with a grade D or F (CORE). Students earn their way out of CORE by improving their grades which are recorded eight times per year. Students not assigned to CORE have their hard work rewarded with Choice; creating options and time for students meeting expectations for additional learning, enrichment, make-up tests, working on projects, serving as peer mentors and tutors and use Choice time according to personal needs.

In addition, Auburn Mountainview High School has opened teacher grade books to parent and student access through the internet. This greatly impacted the communication between the teacher, parent and student about the academic progress of the child. Technology continues to be an integral part of classroom teaching. Each classroom has a document reader and LCD projector with access to a building-wide telecast system.

Likewise, staff development is focused on the goals developed by our SIP plan and those goals drive the training and workshops presented through use of waiver days and building staff development hours. The SIP team has attended multiple workshop sessions in specific areas. Team members are responsible to keep abreast of the latest information and research about best practices and legislation.

WHAT IS SPECIAL ABOUT OUR SCHOOL?

Auburn Mountainview High School is committed to meeting the needs of each individual student. A full range of required and elective academic classes provide students with a variety of learning experiences and challenging courses. Students are able to develop and pursue personalized



education plans by selecting courses from a diversified course catalog. Popular electives include theater, world languages, service learning, culinary arts, jewelry manufacturing, choir, band, orchestra, electronics, graphic design, horticulture, sports medicine, visual communications, engineering technology, computer systems engineering, accounting, family and consumer science, and Microsoft Office, business and marketing. Since 2005 to present, students have earned 506 industry certifications in Microsoft Office Specialist and 23 students have earned Master Microsoft Office Specialist, which means they have passed more than four exams. Staff members have earned an additional 6 certifications which makes our school total 512. Students also have multiple choices in core curriculum areas such as science, math, English and social studies. The school offers many Advanced Placement (AP) courses in social studies, science, language arts, mathematics and the arts and world language classes including French, Spanish, Latin and Japanese. We also offer the Running Start program. These courses allow students to obtain advanced standing in post-secondary programs and/or college credit and have a TEALS (Technology Education and Literacy in Schools) in partnership with Microsoft Company) and a UW in the High School program whereby student receive University of Washington credit for approved courses. Auburn Mountainview High School also provides a program designed to help students recapture credit for previously failed classes with a computer-based program called APEX. Lion Crew and Honor Society host CORE/Choice tutoring several days a week and specific departments also offer before- and after-school tutoring. Freshmen get an introduction to all of the school's services and opportunities through their Orientation class and have year-long support with their Lion Crew leaders.

In collaboration with the Race to the Top Grant – Auburn Mountainview participated in the DiscoverU Day on Wednesday, October 16, 2013. This is a day to build excitement around college and career exploration across Seattle and South King County. This multi-district effort, which includes 275 schools, is focused on providing nearly 150,000 students an opportunity to think about their futures and increase their college/career knowledge. Auburn Mountainview was proud to participate with 82% of our student body taking the PSAT/SAT.



Auburn Mountainview High School 2013-14 School Performance Report

This year, we are joining ranks with the United States Army to offer our students the JROTC program. JROTC is much different from a science or math class. In JROTC, the students run the program, with the guidance of two teachers (retired US Army military.) In JROTC, cadets have many opportunities to join various teams, compete against other schools, visit points of interest, and experience different and fun training activities. Cadets have many opportunities to perform community service, participate in many civic and patriotic events and to help serve their school. There is something here for everyone. JROTC will be a fun and challenging class to take at Auburn Mountainview High School where students receive leadership training and become good citizens. We have more than 100 students currently enrolled in just our second semester of offering these classes.



Auburn Mountainview High School works to keep a balance between academics, athletics and activities. This balance provides a strong and diversified program for students. Involvement in school activities is strongly encouraged.



Auburn Mountainview High School has over 25 clubs that are performance, curriculum or service based. Students are involved in DECA (marketing), drama, forensics, dance, music, robotics, journalism and many more ASB programs.



Many clubs compete in regional, state and national competitions each year. All clubs and activities have developed a strong identity, both on campus and

within the community, thus showcasing their Lion Pride. Athletics complete the triad of balanced student opportunities at Auburn Mountainview High School. The athletic programs strive to develop physical excellence, good citizenship, respect for rules and, especially, sportsmanship. Academics go hand-in-hand with athletics at Auburn Mountainview High School. The athletic, academic and arts programs are supported by an enthusiastic parent booster's organization. This organization raises greatly appreciated funds for all of the programs at Auburn Mountainview High School.

The Career Center is a vital part in facilitating the ongoing outreach of the counseling department. It serves as a general resource to all students, parents and staff of Auburn Mountainview High School. A career counselor helps students become familiar with the options they have for the future. The resources available include occupation software, online college inquiries, College Planning Night for seniors, College Application and Essay Completion Workshops, FAFSA (Free Application for Federal Student Aid) Saturday Workshop in January, 2014, Financial Aid Night and Post-Secondary Night for all students. The Career Center has an excellent website that is informational and provides links to many popular post-high school opportunities and the means to finance further education. In addition, four full-time counselors provide proactive, preventative programs and academic counseling that support students and families in a variety of ways including prevention/intervention support.



Auburn Mountainview continues to support the STAMP test (Standards-Based Measurement of Proficiency). A grant awarded to OSPI by the Bill & Melinda Gates Foundation supports offering competency-based high school credits for world languages to English Language Learners (ELL) and heritage language students in the seven districts involved with the Road Map Project (Auburn, Federal Way, Highline, Kent, Renton, Seattle, and Tukwila). Learn more about the Road Map World Language Credit Program.

Keeping the parents and community connected to Auburn Mountainview High School is important to the staff. A parent newsletter is published quarterly through Constant Contact emails throughout the year. In addition, Auburn Mountainview launched a new website in August 2013 – School Wires, that is a vastly improved parent/student communication tool and we continue to develop and improve our school web site. The purpose of the site is to inform the public of school activities, to provide a means of communication with the community, and to serve as a vehicle to showcase the talents of students. On this site, one can find a listing of upcoming events, a school calendar, e-mail links to all staff and individual teacher websites. Another method of keeping parents connected to the school and their student's success is through Parent-Teacher Conferences held in the fall. Family Access is available for parents to view their child's grades, attendance and demographic information.

**Auburn Mountainview High School
2013-14 School Performance Report**

**Auburn Mountainview High School
Terri Herren, Principal
28900 124th Avenue Southeast
Auburn, Washington 98092
Phone: 253-804-4539**



“In a safe environment, all students will achieve high standards of learning in order to become ethically responsible decision makers and lifelong learners.”

915 Fourth Street Northeast
Auburn, Washington 98002

Board of Directors

Janice Nelson
Ray Vefik
Carol Seng
Anne Baunach
Lisa Connors

Superintendent

Dr. Kip Herren
