

# Auburn Riverside High School

## 2013-14 School Performance Report

"Home of the Ravens"



### Other Information

Adjusted 4-Year Cohort Graduation Rate (Class of 2012)	94.7%
Adjusted 5-Year Cohort Graduation Rate (Class of 2011)	89.2%
Mobility Rate (2012-13)	12.0%

### Teacher Information (2012-13)

Classroom Teachers	77
Average Years of Teacher Experience	14.6
Teacher's with at least a Master's Degree	67.5%

### OUR SCHOOL BUILDING

Auburn Riverside Senior High School opened its doors in September 1995. The school is situated on 32 acres adjacent to the Stuck River and Roegner Park in south Auburn. The building has over 187,000 square feet and includes: 75 classrooms, numerous vocational workstations, 13 portable classrooms, two large gymnasiums, nine lighted tennis courts, a synthetic turf football field and track, a 400-seat state-of-the-art auditorium, numerous athletic fields, and parking for over 800 cars. Last year, the facility housed 1,620 students in grades 9-12. This year, the October 1 enrollment was 1,599 students. The school colors are navy blue, teal, silver, and white and the mascot is the Raven. The school's beautiful facilities, which run parallel to a city park, include the Auburn Riverside Theatre and student commons. The school facility is used heavily by the community for meetings, classes, and athletic and activity events.

### ABOUT OUR SCHOOL

ARHS—Where Personalized Learning Reaches Every—

- R-respectful, contributing citizen
- A-accountable to themselves and others
- V-valued critical thinkers
- E-effective at communicating
- N-navigators of life's challenges and opportunities

Auburn Riverside High School is located in south Auburn, adjacent to Roegner Park and the Stuck River. Auburn Riverside High School opened its doors in September of 1995 with 1,110 students. Last spring, Auburn Riverside High School graduated its 14th senior class. In its 17th year, the school has a population of over 1,600 students.

The majority of Auburn Riverside High School students come from Mt. Baker, North Tapps, and Olympic Middle Schools. A wide range of socioeconomic levels are represented in Auburn Riverside High School's attendance area. Lakeland Hill's is the newest, rapidly growing feeder area for Auburn Riverside High School that extends into Pierce County.

### Student Information

Enrollment (October 2012)	1,618
Enrollment (May 2013)	1,575

### Gender (October 2012)

Male	50.0%
Female	50.0%

### Race/Ethnicity (October 2012)

American Indian/ Alaskan Native	0.7%
Asian	10.0%
Pacific Islander	1.1%
Asian/Pacific Islander	11.0%
Black	4.6%
Hispanic	19.3%
White	58.3%
Two or More Races	6.1%

### Special Programs

• Free/Reduced Price Meals (May 2013)	35.8%
• Special Education (May 2013)	6.0%
• Transitional Bilingual (May 2013)	3.5%
• Migrant (May 2013)	0.0%
• Section 504 (May 2013)	3.3%
• Foster Care (May 2013)	0.0%

### ACHIEVEMENT/AWARDS:

Awards and recognition of achievement are granted through the district, state and national level for improvement, overall excellence and special recognition. Below are awards received by our building:

- 2012 Linda Cowan Schools of Distinction Award
- 2011 Linda Cowan Schools of Distinction Award
- 2010 Linda Cowan Schools of Distinction Award

# Auburn Riverside High School 2013-14 School Performance Report

## ASSESSMENT

### Testing Students in Washington State

Washington uses the grades 3-8 Measurements of Student Progress (MSP), the High School Proficiency Exam (HSPE) and End-of-Course (EOC) exams to test its students. The HSPE and EOCs are used as the state's high school exit exams.

For English language learners (ELL), the state translates the math and science exams into six languages (Spanish, Russian, Korean, Chinese, Vietnamese and Somali). Students can listen to the test questions on a CD, but must answer in English. This covers about 80 percent of the ELL population in our state.

### Measurements of Student Progress (MSP)

The MSP is the state's exam for students in grades 3-8. Testing is one subject per day, with the writing test occurring on two days. Students are tested in reading (grades 3-8), math (grades 3-8), writing (grades 4 & 7) and science (grades 5 & 8).

### High School Proficiency Exam (HSPE)

HSPEs are comprehensive exams that measure the basic proficiency of high school students in reading and writing, and serve as the state's exit exams in those subjects.

Students must pass one HSPE in reading and one in writing to satisfy a portion of the graduation assessment requirements.

### End-of-Course (EOC) Exams

EOCs measure the knowledge of students in algebra 1/integrated math 1, geometry/integrated math 2 and biology when they complete each course. They serve as the state's exit exams for math and science.

Students in the classes of 2013 and 2014 must pass one math EOC in algebra 1/integrated math 1 or geometry/integrated math 2 to satisfy a portion of the graduation assessment requirements.

Students in the class of 2015 and beyond must pass one math EOC in algebra 1/integrated math 1 or geometry/integrated math 2, and the biology EOC to satisfy a portion of the graduation assessment requirements.

### Washington Alternate Assessment System (WAAS)

About one percent of students participate in the WAAS, a challenging program for some students in special education.

### Washington English Language Proficiency Assessment (WELPA)

The WELPA annually assesses growth in English language development by the state's English language learners. This assessment tests reading, writing, listening and speaking knowledge and skills.

### 2012-13 HSPE Results for Auburn Riverside

Grade Level	Reading	Math	Writing	Science
10th	86.0%	See EOC Below	88.9%	See EOC Below

Grade Level	EOC Math Year 1	EOC Math Year 2
All Grades	82.5%	91.4%

Grade Level	EOC Biology
All Grades	83.3%

## FINANCIAL RESOURCES

<i>Auburn School District Funds Spent Per Student for 2012-13</i>	
Total Expenditures (includes salaries)	\$9,683.79
Supplies and Materials	484.39
Equipment	16.37

<i>Auburn Riverside 2012-13 Budget Funds Spent Per Student (not including salary)</i>	
Books and Supplies:	
Basic Education	\$34.56
Special Education	40.64
Vocational Education	1,276.60
Library	3.00
Field Trips	1.80
Administrative Supplies	2.00

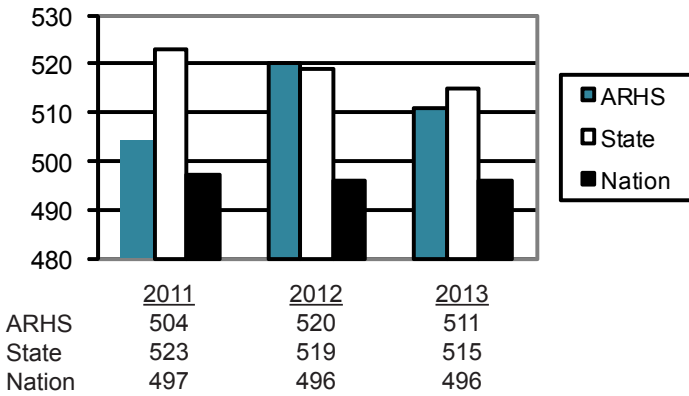
### Legal Notice

Auburn School District complies with all federal rules and regulations and does not illegally discriminate on the basis of age; gender; race; color; creed; religion; national origin (including language); sex; sexual orientation including gender expression or identity; honorably discharged veteran or military status; the presence of any sensory, mental, or physical disability; the use of a trained dog guide or service animal; and provides equal access to the Boy Scouts and other designated youth groups. Inquiries regarding compliance procedures may be directed to: Tim Cummings at (253) 931-4932, Title IX Officer and Section 504 and ADA Coordinator.

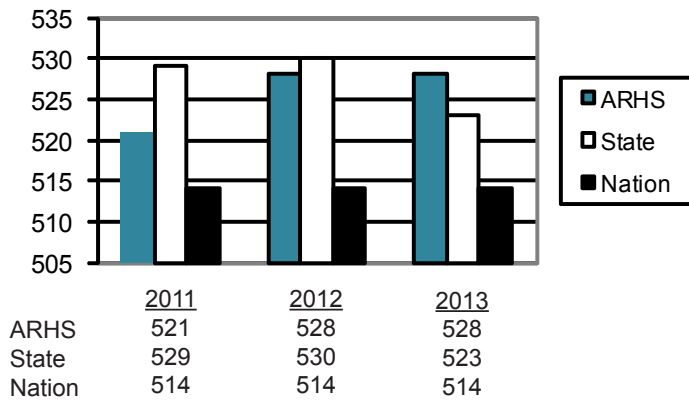
**SAT AND ACT TEST RESULTS:  
Auburn, State and National Average Scores**

Auburn Riverside High School summary results from the Scholastic Aptitude Test (SAT) for college-bound seniors are reflected below. The SAT has been used since the 1920s to help determine a high school student's college preparedness.

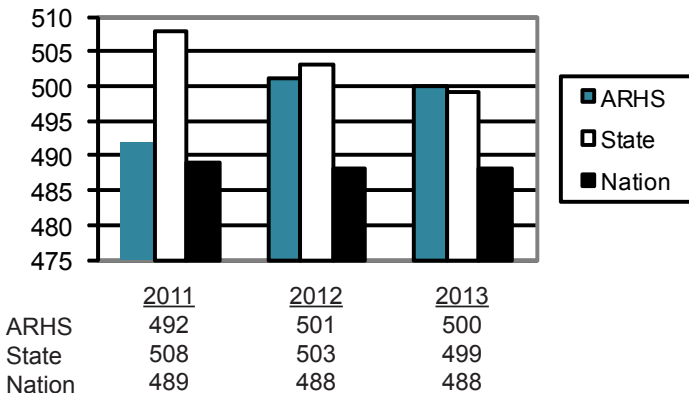
**Critical Reading SAT**



**Math SAT**

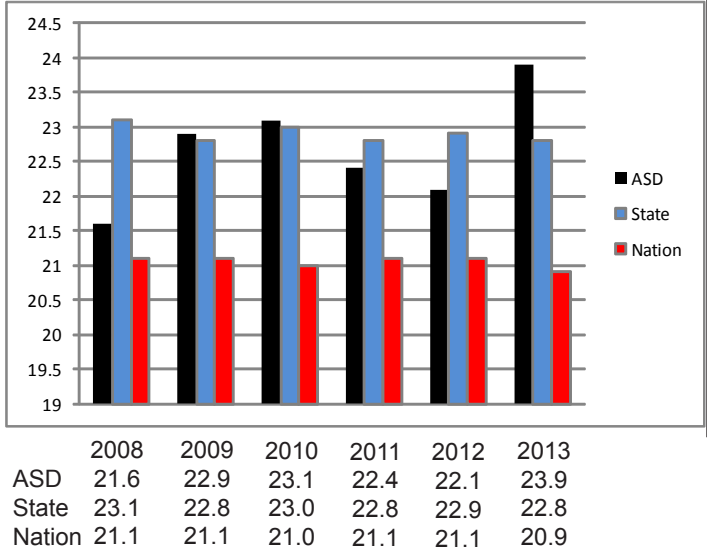


**Writing SAT**



**ACT Results**

The ACT is designed to assess high school students' general education development and their ability to do college level work. Scores are reported on a scale of 1 (low) to 36 (high).



**Auburn Riverside Improves on the Washington Achievement Index**

Auburn Riverside High School has improved significantly on the Washington Achievement Index-a comprehensive measurement of how schools in Washington are performing over the previous two years. The significant academic improvements affirm that Auburn schools are making continuous growth in student achievement.

2008-09	2009-10	2010-11	2011-12
<b>3.6</b>	<b>3.9</b>	<b>4.7</b>	<b>4.5</b>

**MISSION STATEMENT**

The Auburn Riverside community provides students with opportunities to graduate with relevant knowledge as respectful, responsible world citizens who actively question, learn, and participate with a positive sense of purpose throughout life.



## Auburn Riverside High School 2013-14 School Performance Report

### SCHOOL IMPROVEMENT PLAN (SIP):

#### Reaching Every R.A.V.E.N

Auburn Riverside High School has focused its attention on the federal and state-commissioned standards, benchmarks and graduation requirements including the state-required culminating project. Teachers and their respective departments are in their fifth year of implementing professional learning communities in which standards review and data analysis will drive future common assessments and interventions. This year, ARHS will review our School Improvement Plan with an intentional focus on closing the final 10-15% academic gap for our students. Formal steps have been taken to educate our staff on standards based teaching, grading, and educational best practices within all areas. Our professional development, in tandem with professional learning communities, continues to result in greater achievement and more focused learning for all Auburn Riverside High School students. Current state test results and graduation rates already reflect this focused and purposeful work.



#### WHAT IS SPECIAL ABOUT OUR SCHOOL?

Auburn Riverside High School is committed to meeting the needs of each individual student. A full range of required and elective academic classes provide students with a variety of learning experiences and challenging courses. Students are able to develop and pursue personalized education plans by selecting courses from a greatly diversified course catalog. Popular electives include graphic design, drama, jewelry, American Sign Language, college writing, drafting, and electronic communications. The school also offers many Advanced Placement (AP), Tech Prep and Running Start programs. These courses allow students to obtain advanced standing in post-secondary programs and/or college credit. Auburn Riverside High School provides an after-school program designed to help students recapture credit for failed classes.

Freshmen get an introduction to all of the school's services and opportunities through their Orientation class. This class uses PROJECT SUCCESS to help teens learn about developing healthy and effective habits through units focused on communication, time management, conflict management, and diversity. Students also investigate career paths and post-secondary opportunities. An introduction to the Career Center shows

students where they can go for resources to help with post-secondary and career choices. The Raven Crew, a select upper classmen leadership team, welcomes and forges relationships with incoming freshmen in hopes of easing their transition to high school.

In addition to preparing students for post-secondary success, Auburn Riverside High School is committed to providing its students with the education and resources necessary to pass the High School Proficiency Exam and End of Course Exams, required for graduation. Many courses provide intentional HSPE and EOC preparation via class activities, assignments and assessments. The Flight Academy is a team-taught block of periods devoted to subject-specific HSPE and EOC preparation for mathematics, language arts, and orientation. Another graduation requirement is the completion of a culminating project. Auburn Riverside High School's culminating project emphasizes individual portfolios prior to graduation. The portfolio contains a student's secondary education/career plan, sample writings, accomplishments, job acquisition documents, and skills and certifications earned. The portfolio is a resource for students to use for college entrance, career opportunities, and as a personal marketing tool in the future. While the foundation of this portfolio is built into the Orientation class curriculum, students receive support through an advisor/advisee program their senior year.

The Career Center is a vital part in facilitating the ongoing outreach of the counseling department. It serves as a general resource to all students,



parents, and staff of Auburn Riverside High School. A career specialist and career counselor help students become familiar with the options they have for the future. The resources available include occupation software, online college inquiries, Pathways focus, College Planning Night for seniors, Financial Aid Night and Post-Secondary Night for all students. In addition, four full-time counselors provide proactive,

preventative programs that support students and families in a variety of ways. The counseling department reaches out through many programs to offer students guidance and support for personal growth.

Auburn Riverside High School works to keep a balance between academics, athletics and activities. This balance provides a strong and diversified program for students. Involvement in school activities is encouraged. Auburn Riverside High School has over 40 clubs that are performance, curriculum or service based. Students participate and compete in DECA (Marketing), Skills USA, TSA (Technology), drama, forensics, dance, music, journalism and many more ASB programs. Many of the clubs compete in regional, state and national competitions each year.

## Auburn Riverside High School 2013-14 School Performance Report



All clubs and activities have developed a strong identity, both on campus and within the community, showcasing the Raven Spirit.

Athletics balance out the triad of student activities at Auburn Riverside High School. Most teams compete at the regional or state level. Auburn Riverside High School has had numerous state team or individual champions in its 17 years. The athletic programs strive to develop physical excellence, good citizenship, respect for rules, and sportsmanship. Academics go hand-in-hand with athletics at Auburn Riverside High School. Many Auburn Riverside High School extracurricular teams have won academic championships and awards for their scholastic excellence. The athletic programs are supported by an enthusiastic

booster's organization. This organization raises greatly appreciated funds for all of the sports programs. Each spring, the boosters host the Raven Auction. The auction is well supported and very successful.

Auburn Riverside High School has developed and continues to maintain a vibrant school homepage. The purpose of the page is to inform the public of school activities, to provide a means of communication with the community, and to serve as a vehicle to showcase the talents of students. On this site, one can find a listing of upcoming events, a school calendar, e-mail links to all staff, the course catalog, and directions to the school, as well as links to other information and sites helpful to students, parents and community. Students and parents have direct access from the webpage to view grades, attendance and course work.

To visit the site go to: <http://www.auburn.wednet.edu/arhs>



**Auburn Riverside High School  
2013-14 School Performance Report**

**Auburn Riverside High School  
Dave Halford, Principal  
501 Oravetz Road  
Auburn, Washington 98092  
Phone: 253-804-5154**



---

*“In a safe environment, all students will achieve high standards of learning in order to become ethically responsible decision makers and lifelong learners.”*

915 Fourth Street Northeast  
Auburn, Washington 98002

**Board of Directors**

Janice Nelson  
Ray Vefik  
Carol Seng  
Anne Baunach  
Lisa Connors

**Superintendent**

Dr. Kip Herren

---