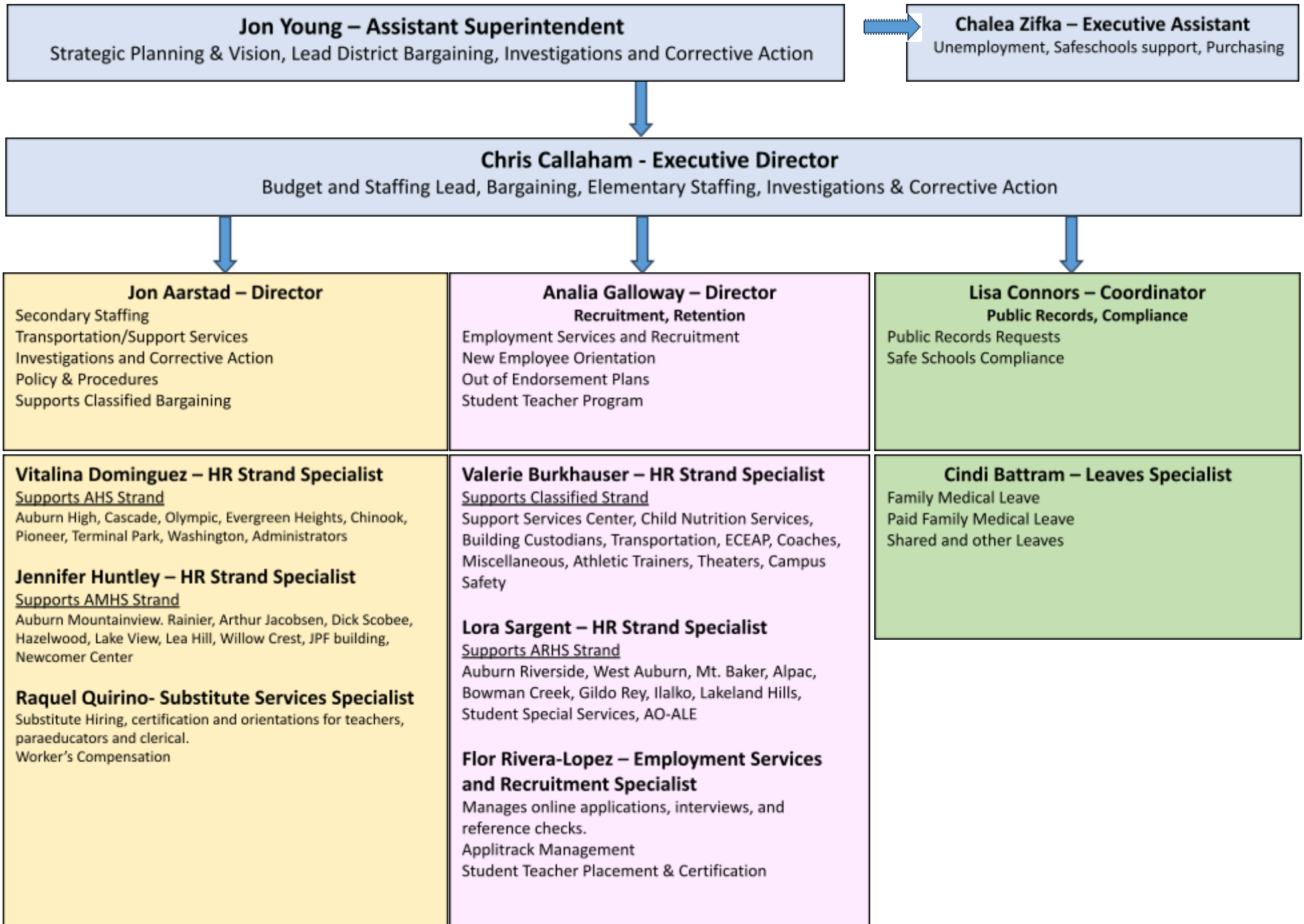


Human Resources 2023-2024



Jon Young – Assistant Superintendent

Strategic Planning & Vision, Lead District Bargaining, Investigations and Corrective Action

Chalea Zifka – Executive Assistant

Unemployment, Safeschools support, Purchasing

Chris Callaham - Executive Director

Budget and Staffing Lead, Bargaining, Elementary Staffing, Investigations & Corrective Action

Jon Aarstad – Director

Secondary Staffing
Transportation/Support Services
Investigations and Corrective Action
Policy & Procedures
Supports Classified Bargaining

Analia Galloway – Director

Recruitment, Retention

Employment Services and Recruitment
New Employee Orientation
Out of Endorsement Plans
Student Teacher Program

Lisa Connors – Coordinator

Public Records, Compliance

Public Records Requests
Safe Schools Compliance

Vitalina Dominguez – HR Strand Specialist

Supports AHS Strand

Auburn High, Cascade, Olympic, Evergreen Heights, Chinook,
Pioneer, Terminal Park, Washington, Administrators

Jennifer Huntley – HR Strand Specialist

Supports AMHS Strand

Auburn Mountainview, Rainier, Arthur Jacobsen, Dick Scobee,
Hazelwood, Lake View, Lea Hill, Willow Crest, JPF building,
Newcomer Center

Raquel Quirino- Substitute Services Specialist

Substitute Hiring, certification and orientations for teachers,
paraeducators and clerical.
Worker’s Compensation

Valerie Burkhauser – HR Strand Specialist

Supports Classified Strand

Support Services Center, Child Nutrition Services,
Building Custodians, Transportation, ECEAP, Coaches,
Miscellaneous, Athletic Trainers, Theaters, Campus
Safety

Lora Sargent – HR Strand Specialist

Supports ARHS Strand

Auburn Riverside, West Auburn, Mt. Baker, Alpac,
Bowman Creek, Gildo Rey, Ilalko, Lakeland Hills,
Student Special Services, AO-ALE

**Flor Rivera-Lopez – Employment Services
and Recruitment Specialist**

Manages online applications, interviews, and
reference checks.
Applitrack Management
Student Teacher Placement & Certification

Cindi Battram – Leaves Specialist

Family Medical Leave
Paid Family Medical Leave
Shared and other Leaves