

**OLYMPIC
MIDDLE
SCHOOL**

Progress

Serving the
Olympic Middle
School community
during
construction

P R O J E C T U P D A T E S E P T E M B E R 2 0 1 8

Current & Upcoming Construction Activities



A few weeks ago, Absher finished pouring the footings and stem walls for the building, and they just poured their first section of concrete slab on grade for the gymnasium floor. Concrete masonry walls are now being constructed in the gym area as mechanical and electrical trades finish up installing under-slab utilities for the remaining areas. In the next few weeks, Absher plans on pouring the remaining slabs on grade and erecting structural steel. *During this phase, please expect to see heavier truck traffic entering and exiting the site.*

Neighborhood Impacts

- H Street will have occasional closures. Please watch for flaggers and truck traffic during these times.

Project Team

Owner: Auburn School District
GC/CM: Absher Construction Company
Architect: BLRB Architects
Engineers: PCS Structural Solutions
Hargis Engineers
AHBL
Weisman Design Group
Stantec
Halliday Associates

Project Contacts

Assistant Superintendent: Max Cannon
max.cannon@AbsherCo.com
253.446.3141

Project Engineer: Rachel Knudson
rachel.knudson@AbsherCo.com
253.446.3141

Absher's Jobsite Contact Information

(For safety reasons, arrangements must be made with Absher prior to entering construction zones)

Absher Job Trailer
1825 K Street SE
Auburn, WA 98002

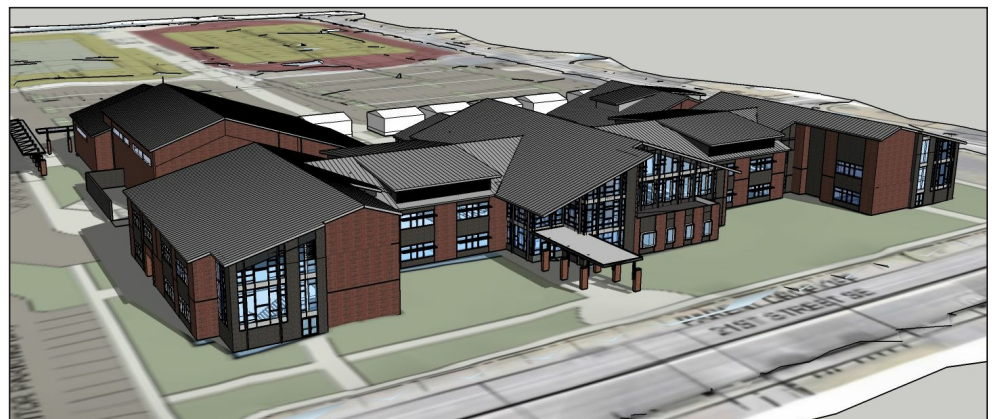
Telephone: (253) 845-9544

What's Happening At Olympic Middle School?



The Olympic Middle School Reconstruction Project is a three-phase project to replace the current Olympic Middle School. The first two phases include construction of a new middle school at the south end of the current school site and minor modernization of the existing school buildings. The existing school will remain occupied and operational during construction of the new school. Once construction of the new school is completed, the existing building will undergo minor improvements to allow it to function as an interim elementary school. The interim elementary school will house students from other schools for 4 years while the district replaces elementary schools elsewhere within the district.

The new middle school is being constructed adjacent to the existing school and is 105,000 square feet in size. The building is a two-story steel and concrete structure designed to accommodate 800 students in grades 6-8, and will include general classrooms, specialty classrooms, gymnasiums, commons and support spaces. Site improvements in the first phase of construction will include student pick-up and drop-off; bus loading and unloading areas; staff, visitor and event parking; exterior courtyard and delivery areas; and infrastructure improvements required for the new construction.



Construction Safety Tips For The Community

The safety of the surrounding community is Absher's number one priority on each of our jobsites. Absher is taking every precaution to ensure a safe project, and they ask for your assistance in maintaining a safe project site. Below are safety tips to remember throughout the construction process. Please discuss these with your children, as well.

- Travel with caution and slow down when in construction zones. Be alert for construction workers and heavy equipment, as well as cyclists, pedestrians, and other traffic.
- Allow plenty of time for traveling around the site, in case of driving delays.
- Follow posted signs that explain detours, lane closures and other changes in driving conditions. Remember that traffic fines are doubled in construction areas.
- Do not enter active construction areas or areas that are secured with safety boarding and/or fencing.
- Do not distract onsite construction workers.
- Use extra caution in the evenings when it is dark or during rainy weather.
- Be patient. Remember that construction is a short-term inconvenience for a long-term benefit.

Olympic Middle School Progress is produced by Absher Construction Company, general contractor/construction manager for the project, to help convey project plans, upcoming events, construction activities and other information to the Olympic Middle School community and project participants. *Community input is welcome!* Please contact Rachel Knudson at rachel.knudson@AbsherCo.com for more information.

ABSHER
Absher Construction Company • www.AbsherCo.com