

AGENDA FOR BOARD OF DIRECTORS  
AUBURN SCHOOL DISTRICT NO. 408  
Monday, February 27, 2017

- I. TIME AND PLACE
  - 1. 7 p.m. at the James P. Fugate Administration Building
- II. ROLL CALL
  - 1. Roll call of board members
- III. PLEDGE OF ALLEGIANCE
- IV. AUDIENCE PARTICIPATION
  - 1. Written communications
  - 2. Scheduled communications
  - 3. Unscheduled communications
  - 4. Community groups and organizations
- V. LEGISLATIVE UPDATE
- VI. STUDENT AND STAFF RECOGNITION
  - 1. Recognition of student
  - 2. Recognition of staff
  - 3. 2016-17 classified employee of the year
  - 4. Classified school employee week
  - 5. School retirees' appreciation week
- VII. STUDENT PARTICIPATION
  - 1. Washington Elementary School PTA report
  - 2. Activity/athletic report
  - 3. Requests for travel
- VIII. SCHOOL PROGRAMS AND STUDENT ACHIEVEMENT
  - 1. 2016-17 Washington Elementary School PLC presentation
- IX. PERSONNEL
  - 1. Certificated and classified personnel report
  - 2. Requests for travel
- X. BUILDING PROGRAM
  - 1. Auburn High School modernization and reconstruction project
  - 2. Authorization to call for bids

XI. FINANCE

1. Vouchers
2. Contract for insurance broker
3. Resolution No. 1233
4. Financial statements

XII. DIRECTORS

1. Approval of minutes
2. Waiver closures
3. Resolution No. 1234
4. Relocation of board meetings
5. Discussion

## LEGISLATIVE UPDATE

The board will discuss legislative items.

## STUDENT AND STAFF RECOGNITION

### 1. Student Recognition

The Auburn School District Board of Directors will recognize Jeanne Tuia, a fourth grade student at Washington Elementary, for being an outstanding student.

Jeanne exemplifies the school motto of being "Respectful, Responsible and Ready to Learn." She has attended Washington since kindergarten.

Her teacher, Amber Birge said, "Jeanne is one of the most amazing children I have ever had the pleasure of meeting. She is an exceptional student. She works hard and doesn't give up when things get tough for her. Once she knows how to do something, she is always willing to work harder and learn more."

Jeanne participates in the afterschool soccer program and was elected as the school's ASB secretary.

She is a role model for her peers and often seeks opportunities to help staff and students. During recess, she volunteers to pick up trash and gather equipment left on the playground.

She loves to sing and, being the proactive kid that she is, Jeanne asked to be in the adult choir at church and asked Principal Thomas about singing the National Anthem at school assemblies.

Jeanne is a self-motivated learner who sets aside time during school breaks and summer to 'Homeschool.' Her goal is to push herself and master schoolwork above her grade level in reading, math, and science. She is researching colleges such as Washington State University and Grand Canyon University. She hopes to be a teacher.

Jeanne's infectious smile lights up the day. Her 'can do' attitude and willingness to do 'whatever it takes' is a beacon of hope for a future generation.

### 2. Staff Recognition

The Auburn School District Board of Directors will recognize Debbie Sumner, secondary fiscal accountant at Auburn High School, for her outstanding service.

Debbie has worked in the Auburn School District for 17 years. She was the substitute coordinator in the district office, worked as a cashier at Auburn Riverside, in the attendance office at Auburn High, and has been in her current role for 12 years.

Prior to working in the Auburn School District, Debbie worked in sales and in the Kent School District.

Debbie loves her job at Auburn High. "The kids are the best part of my job. I have fun with them. I also love the staff, we have a fantastic team," she said.

Auburn High registrar Arlista Holman said, "Debbie does an amazing job for us. She is accountable, reliable, and ethical in her management of school funds. She is a creative thinker and performs her job with dedication every single day. Her expertise is an asset to the district."

Originally from Colorado, Debbie and Phill, her husband of 29 years, live in Auburn. They have two children, both Auburn High graduates.

When not at work, Debbie is with her family. She has two granddaughters who are the light of her life. She is a die-hard Denver Broncos fan—her office decor is a testament to her devotion to her home team. She also is a huge San Jose Sharks fan and loves music, especially watching her son's metal band play.

### 3. 2016-17 Classified Employee of the Year

The Auburn School District Board of Directors will recognize Pilar Hunter, family engagement liaison at Olympic Middle School, as the Classified Employee of the Year.

Pilar started her current role in November, 2014, and she has been in the district for nine years. She has been a playground supervisor, worked the summer feeding program, been a one-on-one para-educator, a resource room para-educator, and worked in the SLC program. In addition to her classroom duties, Pilar is active in the futsal program at Olympic and is the staff leader for the very active Latinos Unidos service club.

She organizes community service events for students with amazing turnouts at each event. Just this year, students volunteered at the Harvest festival, the holiday craft festival, marched in the Santa Parade, raised money for homeless youth, hung door hangers for the election, organized a luncheon for local firefighters, and more.

"I really, really love this school. I love the staff, I love the kids," she said. "This is the job I was born to do."

Olympic Principal Jason Hill said Olympic would not be the same without Pilar. "Our students are more engaged in our school. She has created a culture of belonging and service. Her leadership efforts improve attendance, grades, and so many other immeasurable aspects of our students' success."

Prior to working in the ASD, Pilar was a UPS delivery driver for 15 years. She wanted a position that allowed her more time with her own children and working for the district was a perfect fit.

Born in Renton, Pilar is no stranger to moving around and meeting people. She attended 13 schools in various locations before graduating from high school in Texas. Her father retired as a government special agent and she moved to Puyallup.

She views her role as the family engagement liaison a perfect fit for her career aspirations. Her goal is to facilitate for families anything kids need to be successful in school. She is bilingual in Spanish and works closely with Olympic's Hispanic families.

Pilar and husband Tony have five kids between them. Three kids are Auburn School District graduates and their youngest is a senior at Auburn Riverside. Her free time is devoted to her family.

4. Classified School Employee Week

The superintendent is pleased to inform the board that Monday through Friday, March 13-17, has been proclaimed "Classified School Employee Week." It would be appropriate for the superintendent and the board to join in supporting the Governor in this important recognition of the contribution of classified personnel by signing the attached proclamation. A representative from each classified group will be present.

Recommendation:	That the board recognize "Classified School Employee Week" by signing the attached proclamation.
-----------------	--

5. School Retirees' Appreciation Week

The superintendent is pleased to inform the board that Monday, March 13, through Sunday, March 19, has been proclaimed "School Retirees' Appreciation Week." It would be appropriate for the superintendent and the board to join in this important recognition of the contribution of our retired school employees by signing the attached proclamation.

Recommendation:	That the board recognize "School Retirees' Appreciation Week" by signing the attached proclamation.
-----------------	---

## **AUBURN SCHOOL DISTRICT NO. 408**

### **PROCLAMATION**

**WHEREAS**, *a significant number of public education staff serving the needs of the children of the Auburn School District are classified school employees; and,*

**WHEREAS**, *classified school employees are instrumental in the fulfillment of the Auburn School District's responsibility to educate children; and,*

**WHEREAS**, *classified school employees are involved in maintaining school buildings, providing secretarial and clerical assistance to staff, preparing and serving meals, providing safe transportation to and from school facilities, keeping school facilities clean and orderly, assisting in the classroom, and many other necessary services; and,*

**WHEREAS**, *the classified staff deserve recognition and thanks for the excellent work they are doing for the community and for the children enrolled in Auburn schools;*

**NOW, THEREFORE**, *the Auburn School District Board of Directors do hereby proclaim March 13-17, 2017, as*

### **CLASSIFIED SCHOOL EMPLOYEE WEEK**

*Signed, this 27th day of February, 2017*

*President  
Auburn School Board of Directors*

AUBURN SCHOOL DISTRICT NO. 408

PROCLAMATION

**WHEREAS**, the Auburn School Board recognizes school employees who have retired from actively serving the children of our community, and

**WHEREAS**, school retirees advance and strengthen our public schools by supporting high educational standards, and

**WHEREAS**, school retirees promote individual and group involvement in community projects and activities, and

**WHEREAS**, school retirees continue to volunteer in our schools and to participate in school-sponsored activities,

**NOW, THEREFORE**, the Auburn School Board of Directors does hereby proclaim March 13 through March 19, 2017, and urge all citizens to join us in observance of

**SCHOOL RETIREES' APPRECIATION WEEK**

Signed, this 27th day of February, 2017

President  
Auburn School Board of Directors



## STUDENT PARTICIPATION

1. Washington Elementary School PTA Report

Ryan Foster, associate superintendent of principal leadership and school programs, will introduce Pauline Thomas, Washington Elementary School principal, who will introduce Rachael Conrad, Donna Bowler, and Lynette Stuart, Washington Elementary School PTA president, secretary and treasurer, respectively, who will present the Washington Elementary School PTA report and answer questions from the board.

2. Activity/Athletic Report-Mt. Baker Middle School Drama Program

Ryan Foster will introduce Greg Brown, Mt. Baker Middle School principal, who will introduce James Char, Mt. Baker Middle School drama teacher. Mr. Char will introduce Madison McKeough, Madison Inkster, Anthony Doucette, and Max Kliever, students, who will report on the Mt. Baker Middle School drama program and answer questions from the board.

3. Requests for Travel

- a. Fifty Auburn Riverside High School students request permission to travel to Vancouver, Friday to Saturday, March 17-18. The purpose of the trip is to perform at the NW Regional Concert Band Festival. Lodging will be at the Hampton Inn & Suites, meals will be at local restaurants, and travel will be by charter bus. All expenses will be paid by ASB funds. Meghan Wagner, Auburn Riverside High School teacher, requests permission to accompany the students. A substitute will not be needed.

Cari Manry, Felicia Brank, Annissa Manolovitz, and Ryan Wagner, parent chaperones, request permission to accompany the students.

- b. Fifteen Auburn High School students request permission to travel to Cheney, Wednesday to Saturday, April 5-8. The purpose of the trip is to compete in the FIRST Robotics Regional Competition. Lodging is to be determined, meals will be at local restaurants, and travel will be by personal vehicles. All expenses will be paid by ASB funds. Jan Erie, Jarred Foss, and Chris Zawislak, Auburn High School teachers, request permission to accompany the students. Substitutes will be needed for two and half days.
- c. Fifteen Auburn High School students request permission to travel to Houston, Texas, Tuesday through Sunday, April 18-23. The purpose of the trip is to compete in the FIRST Robotics International Competition. Lodging is to be determined, meals will be at local restaurants, and travel will be airplane. All expenses will be paid by ASB funds. Jan Erie, Jarred Foss, and Chris Zawislak request permission to accompany the students. Substitutes will be needed for four days.

- d. Seventy-eight Auburn Riverside High School students request permission to travel to Pasco, Thursday to Saturday, April 20-22. The purpose of the trip is to perform at the 2017 Choir Festival and Tour. Lodging will be at the Red Lion hotel, meals will be at local restaurants, and travel will be by charter bus. All expenses will be paid by ASB funds. Jonathan Stenson, Auburn Riverside High School teacher, requests permission to accompany the students. A substitute will be needed for two days.

Riza Rosales and Jodi Hamm, parent chaperones, request permission to accompany the students.

- e. Eighteen Auburn Riverside High School students request permission to travel to Spokane, Friday to Sunday, August 25-27. The purpose of the trip is to attend the Auburn Riverside High School Soccer Annual Bonding Trip. Lodging will be at the Riverside State Park Bowl, meals will be at local restaurants, and travel will be by rental vans. All expenses will be paid by ASB funds. Paul Lewis and Nicky Kinney, Auburn Riverside High School coaches, request permission to accompany the students. Substitutes will not be needed.

Chelsea Pries, alumni, requests permission to accompany the students as a chaperone.

- f. Twelve Auburn Riverside High School students request permission to travel to Las Vegas, Nevada, Thursday to Saturday, September 14-16. The purpose of the trip is to compete in the Durango Classic Invitational Volleyball Tournament. Lodging will be at a hotel to be determined, meals will be at local restaurants, and travel will be by airplane. All expenses will be paid by ASB funds. Chris Leverenz, Jason Boyd, and Stazi Edmonds, Auburn Riverside High School coaches, request permission to accompany the students. Substitutes will not be needed.

Recommendation:

That the above trips be approved as requested.

SCHOOL PROGRAMS AND STUDENT ACHIEVEMENT

1. 2016-17 Washington Elementary School PLC Presentation

Ryan Foster will reintroduce Pauline Thomas who will introduce Tori Smith and Donna Mayer, Washington Elementary School staff members. The team will share a PowerPoint presentation, give a brief overview of how the Professional Learning Community model has been utilized to increase student achievement at Washington Elementary School, and answer questions from the board. This presentation aligns with the 2013-16 District Strategic Plan: Goal 1, Objective 1, Strategy 1.

# Washington Elementary



# Our Vision...

The vision of Washington Elementary is to provide a supportive and challenging environment where all students have the opportunity to reach their full potential through high academic standards, independent thinking and responsible behavior.



# The Culture of Washington PLC

Our philosophy: At Washington we are committed to helping **all** students reach their potential. We are committed to continuous school improvement by providing teachers with time and resources to collaborate and focus on student achievement.

- Our PLC groups:
  - Consist of classroom teachers, building specialists, school counselor, resource room teacher, ELL teachers, Principal
  - Share data
  - Share responsibility of ALL students
  - Have collaboration and trust
  - Focus on **learning**, not just on **teaching**
  - Use data to provide systematic and timely interventions
  - Celebrate achievements

# The 4 Essential Questions for Instruction

1. What do we want our students to know and be able to do?
2. How will we know they have learned it?
3. What will we do if they did not learn it?
4. What will we do if they learned it?

# What do we want our students to know and be able to do?

*Aligning the standards is not something you've DONE; it's something you DO on a regular basis with your teams.*

- Common Core Targets
- Planning as a team
- Accumulating/researching resources
- Vertical Teaming
- Assessment tools





# How will we know they have learned it?

- Gathering Data

- Dibels
- Maps
- Benchmark/Progress Monitoring
- Formative assessments
- Summative Assessments
- Fluency Checks
- Exit Tickets



- Analyzing Data

- Timely
- Concise
- Shared

- Data is used to inform instruction

- Collaboration is essential in order to achieve student success

***“The important question is not how assessment is defined but whether assessment information is used...”***

***-Palomba & Banta***

# What will we do if they did not learn it?

- All staff are willing to “share” accountability for learning
- Data driven conversations provide timely and appropriate interventions
- Reading groups are fluid
- Math intervention groups are fluid
- Small group interventions are embedded throughout the day
- Double-dipping reading instruction
- Extended-learning programs (Extended day math, YMCA)
- Share data with students and set goals
- Parent communication
- ELL and SPED push-in



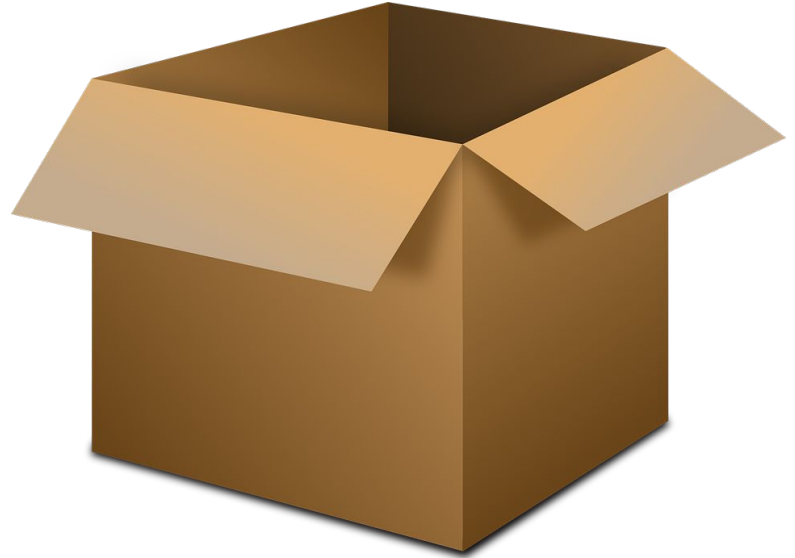
# What will we do if they learned it?

- Differentiated instruction in the classroom
- Push students to the next level (higher group, deeper level questions)
- Peer tutoring
- Ability grouping
- Explore acceleration options within our building
- Provide opportunities for their creativity to be celebrated
- Use technology as a gateway to content rich tasks and more challenging curriculum



# Thinking outside the box...

- Creative fluid groupings
- Opportunities for vertical team meetings
- Intervention scheduling
- Using ALL staff for interventions



***"If we always do what we've always done, we will get what we've always got."***

***-Adam Urbanski***

# Supporting the Collaborative Work

- Data carousel
  - Dibels
  - MAPs
- Professional Development
  - Boost-phonics instruction
  - MAPs assessment-reports, interventions, differentiated instruction
  - No Excuses University
  - Deep Equity
- Next Steps
  - Intentional Vertical Teaming at monthly PLCs
  - Manipulating the master schedule to provide daily embedded interventions
  - Analyzing data through the lense of educational disparities based on race and economics



## 1. Certificated and Classified Personnel Report

Recommendation: That the board approve the attached report.

a. Bryant Thomas, Noe (Marcus) Yzaguirre, and Ralph Cubit, Auburn Riverside High School coaches, request permission to travel to Los Angeles, California, Thursday to Sunday, March 30-April 2. The purpose of the trip is to attend the 2017 USC/Nike Coaches Clinic. Lodging will be at a hotel to be determined, meals will be at local restaurants, and travel will be by airplane. All expenses will be paid by ASB funds. Three substitutes will be needed for one day.

b. Debbie Leighton, assistant superintendent of human resources; Heidi Harris, assistant superintendent of student learning; Vicki Bates, assistant superintendent of technology; Julie DeBolt, executive director of student learning and high school programs; Tami Petrina, executive director of student special services; Vicki Alonzo, director of public information; Brendan Jeffreys and Adam Ladage, assistant directors of student learning; Denise Daniels, assistant director of equity, outreach and engagement; and Erin Hall, Auburn Mountainview High School teacher, request permission to travel to Kansas City, Missouri, Wednesday to Monday, April 26-May 1. The purpose of the trip is to attend the White Privilege Conference. Lodging will be at the Marriott hotel, meals will be at local restaurants, and travel will be by airplane. All expenses will be paid by district funds. One substitute will be needed for four days.

Recommendation: That the above trips be approved as requested.

# PERSONNEL REPORT - CERTIFICATED

Classification	Job Type	Building	Name	Start Date	Hours	Rate of Pay	Comment
Curriculum-Noncurriculum							
CERTIFICATED	ADDITIONAL HOURS FOR MEETINGS/IEPS	MT.VIEW SR HI	GRAVES, LONA	12/13/16	20.0	\$19.84	
CERTIFICATED	ADMIN FINALS TO STUDENTS	MT.VIEW SR HI	BAUMSTARK, PATRIA	1/27/17	5.0	\$53.40	
CERTIFICATED	AFTERSCHOOL ELL EXTENDED DAY	PIONEER	RUTLEDGE, JORDAN	1/31/17	24.0	\$31.06	
CERTIFICATED	AFTERSCHOOL ELL EXTENDED DAY	PIONEER	ROWE, DANIELA	1/31/17	24.0	\$48.01	
CERTIFICATED	AFTERSCHOOL ELL EXTENDED DAY	PIONEER	HILL, ANGELA	1/31/17	24.0	\$48.01	
CERTIFICATED	AFTERSCHOOL ELL EXTENDED DAY	CASCADE	ROBAYO-WHITE, MARTHA	1/31/17	23.0	\$53.40	
CERTIFICATED	BLT MEETINGS	TERMINAL PARK	UFFALUSSY LAFAYETTE, LESLIE	9/26/16	12.0	\$39.75	
CERTIFICATED	BLT MEETINGS	TERMINAL PARK	SWEENEY, DEVAN	9/26/16	12.0	\$51.03	
CERTIFICATED	BLT MEETINGS	TERMINAL PARK	PARCE, WENDY	9/26/16	12.0	\$49.51	
CERTIFICATED	BLT MEETINGS	TERMINAL PARK	MISCHE, EMILY	9/26/16	12.0	\$53.40	
CERTIFICATED	BLT MEETINGS	TERMINAL PARK	KUZARO, JESSLYN	9/26/16	12.0	\$53.40	
CERTIFICATED	BLT MEETINGS	TERMINAL PARK	IAMS, MARISSA	9/26/16	12.0	\$37.88	
CERTIFICATED	BLT MEETINGS	TERMINAL PARK	HARLOR II, JOHN	9/26/16	12.0	\$52.36	
CERTIFICATED	BLT MEETINGS	TERMINAL PARK	HANSON, MARLENE	9/26/16	12.0	\$45.26	
CERTIFICATED	BLT MEETINGS	TERMINAL PARK	GRAGG, JULIE	9/26/16	12.0	\$38.80	
CERTIFICATED	BLT MEETINGS	TERMINAL PARK	CLOUGH, MICHELLE	9/26/16	12.0	\$31.03	
CERTIFICATED	BLT MEETINGS	TERMINAL PARK	BULSON, LAURIE	9/26/16	12.0	\$48.01	
CERTIFICATED	CAMP AUBURN	CHINOOK	MCSWAIN, CHRISTINA	5/2/17		STIPEND \$428	
CERTIFICATED	CAMP AUBURN	CHINOOK	KOENIG, JAMIE	5/2/17		STIPEND \$429	
CERTIFICATED	CAMP AUBURN	CHINOOK	HENDRICKS, JESSICA	5/2/17		STIPEND \$430	
CERTIFICATED	CAMP AUBURN	LEA HILL	FETTIG, MICHAEL	5/1/17		STIPEND \$431	
CERTIFICATED	CAMP AUBURN	LEA HILL	FOSS, KIMBERLEY	5/1/17		STIPEND \$432	
CERTIFICATED	CAMP AUBURN	ILALCO	SPRENGER, PETER	4/25/17		STIPEND \$433	
CERTIFICATED	CAMP AUBURN	ILALCO	KLIEWER, KARSTIN	4/25/17		STIPEND \$434	
CERTIFICATED	CAMP AUBURN	ILALCO	DEFRANCESCO, ANDREW	4/25/17		STIPEND \$435	
CERTIFICATED	CAMP AUBURN	ILALCO	DUTOIT, MICHELLE	4/25/17		STIPEND \$436	
CERTIFICATED	CAMP AUBURN	ARTHUR JACOBSEN	MOONEY, KATHLEEN	5/23/17		STIPEND \$437	
CERTIFICATED	CAMP AUBURN	ARTHUR JACOBSEN	KEMP, BRIAN	5/23/17		STIPEND \$438	
CERTIFICATED	CAMP AUBURN	ARTHUR JACOBSEN	CAPPONI-GLIDEWEL, DEBBI	5/23/17		STIPEND \$439	
CERTIFICATED	CAMP AUBURN	ARTHUR JACOBSEN	COLBURN, DEANNA	5/23/17		STIPEND \$440	
CERTIFICATED	COORDINATOR/ADMINISTRATION	MT.VIEW SR HI	O'BRIEN, LEAH	9/7/16	65.0	\$49.51	
CERTIFICATED	ED REFORM STRATEGIES FOR CONTENT LITERACY	CASCADE	UPSHAW-YAZZIE, NORMA	1/24/17	4.0	\$46.63	
CERTIFICATED	ED REFORM STRATEGIES FOR CONTENT LITERACY	RAINIER	MARIA, DENISE	9/1/16	4.0	\$36.52	
CERTIFICATED	ELA ALIGNMENT SUPPORT/TRAINING	ALPAC	MILLER, TANA	1/31/17	20.0	\$47.36	
CERTIFICATED	ELA ALIGNMENT SUPPORT/TRAINING	ALPAC	BURTIS, JAMISON	1/31/17	20.0	\$31.47	
CERTIFICATED	EXT. DAY LEARNING PROGRAM	CASCADE	ECKLUND, KARLY	10/24/16	12.0	\$32.87	
CERTIFICATED	EXT. DAY LEARNING PROGRAM	DICK SCOBEE	JENKINS, GLENN	10/24/16	24.0	\$35.85	
CERTIFICATED	EXT. DAY LEARNING PROGRAM	OLYMPIC	SMITH-DORSEY, GLORIA	10/24/16	41.8	\$49.06	
CERTIFICATED	EXT. DAY LEARNING PROGRAM	RAINIER	GULLARD, CHRISTINA	10/24/16	28.5	\$52.36	
CERTIFICATED	EXT. DAY LEARNING PROGRAM	RAINIER	THOMAS, CHARLES	10/24/16	28.5	\$53.40	
CERTIFICATED	EXT. DAY LEARNING PROGRAM	RAINIER	LASHER, TRACY	10/24/16	48.5	\$51.03	
CERTIFICATED	EXT. DAY LEARNING PROGRAM	RAINIER	MCGUFFIN, JAY	10/24/16	28.5	\$46.63	
CERTIFICATED	EXT. DAY LEARNING PROGRAM	RAINIER	LEWIS, BRENDA	10/24/16	28.5	\$49.51	
CERTIFICATED	EXT. DAY LEARNING PROGRAM	RAINIER	LUONG, JACOB	10/24/16	28.5	\$53.40	
CERTIFICATED	EXT. DAY LEARNING PROGRAM	LEA HILL	CHANDLER, HEATHER	10/24/16	10.0	\$29.82	
CERTIFICATED	EXT. DAY LEARNING PROGRAM	CHINOOK	STICKLEY, EMILY	10/24/16	10.0	\$38.04	
CERTIFICATED	EXT. DAY LEARNING PROGRAM	CHINOOK	KOENIG, JAMIE	10/24/16	10.0	\$29.49	
CERTIFICATED	EXT. DAY LEARNING PROGRAM	CHINOOK	KINNEY, DANIELLE	10/24/16	10.0	\$37.30	
CERTIFICATED	EXT. DAY LEARNING PROGRAM	CHINOOK	THIBODEAUX JR., TERRY	10/24/16	10.0	\$48.06	
CERTIFICATED	EXT. DAY LEARNING PROGRAM	ALPAC	LAUKALA, RACHEL	10/24/16	10.0	\$30.24	
CERTIFICATED	EXT. DAY LEARNING PROGRAM	ALPAC	MCKENZIE, JULIE	10/24/16	10.0	\$48.01	
CERTIFICATED	EXTRA HOURS SIP (TITLE)	RAINIER	OLSON, THOMAS	1/30/17	3.0	\$29.86	
CERTIFICATED	EXTRA HOURS SIP (TITLE)	RAINIER	ARMBRUSTER, SUSAN	1/30/17	2.0	\$48.01	
CERTIFICATED	EXTRA HOURS SIP (TITLE)	RAINIER	CAMPBELL, MONICA	1/30/17	2.0	\$53.40	
CERTIFICATED	EXTRA HOURS SIP (TITLE)	RAINIER	CHAVEZ, LUIS	1/30/17	2.0	\$48.01	
CERTIFICATED	EXTRA HOURS SIP (TITLE)	RAINIER	DALOS, HARRIETT	1/30/17	2.0	\$48.01	
CERTIFICATED	EXTRA HOURS SIP (TITLE)	RAINIER	ESPINOSA II, MICHAEL	1/30/17	2.0	\$31.99	
CERTIFICATED	EXTRA HOURS SIP (TITLE)	RAINIER	FAGER, ELSA	1/30/17	2.0	\$53.40	
CERTIFICATED	EXTRA HOURS SIP (TITLE)	RAINIER	FLORY, JONI	1/30/17	2.0	\$53.40	
CERTIFICATED	EXTRA HOURS SIP (TITLE)	RAINIER	JONASSON, KIRK	1/30/17	2.0	\$53.40	
CERTIFICATED	EXTRA HOURS SIP (TITLE)	RAINIER	LEWIS, BRENDA	1/30/17	2.0	\$49.51	
CERTIFICATED	EXTRA HOURS SIP (TITLE)	RAINIER	LIGHT, ROBIN	1/30/17	2.0	\$48.01	
CERTIFICATED	EXTRA HOURS SIP (TITLE)	RAINIER	LUDWIGSON, CHRISTINE	1/30/17	2.0	\$50.37	
CERTIFICATED	EXTRA HOURS SIP (TITLE)	RAINIER	MARIA, DENISE	1/30/17	2.0	\$36.52	
CERTIFICATED	EXTRA HOURS SIP (TITLE)	RAINIER	OLSON, THOMAS	1/30/17	2.0	\$29.86	
CERTIFICATED	EXTRA HOURS SIP (TITLE)	RAINIER	RADCLIFF, BETH	1/30/17	2.0	\$53.40	
CERTIFICATED	EXTRA HOURS SIP (TITLE)	RAINIER	RASMUSSEN, DAWN	1/30/17	2.0	\$45.87	
CERTIFICATED	EXTRA HOURS SIP (TITLE)	RAINIER	REMPFER, SONYA	1/30/17	2.0	\$48.01	
CERTIFICATED	EXTRA HOURS SIP (TITLE)	RAINIER	SOHAL, BALINDER	1/30/17	2.0	\$43.92	
CERTIFICATED	EXTRA HOURS SIP (TITLE)	RAINIER	SOWARDS, JESSLYN	1/30/17	2.0	\$30.68	
CERTIFICATED	EXTRA HOURS SIP (TITLE)	RAINIER	TURNER, HAYLEY	1/30/17	2.0	\$28.33	
CERTIFICATED	EXTRA HOURS SIP (TITLE)	RAINIER	WILSON, CHRISTINE	1/30/17	2.0	\$52.36	
CERTIFICATED	EXTRA HOURS-HOME SCHOOL STUDENT	TERMINAL PARK	DAVIS, LORI	9/1/16	20.0	\$51.13	
CERTIFICATED	FAMILY SERIES: COLLEGE/CAREER NIGHTS	MT.VIEW SR HI	LANDIS, DEBRA	1/16/17	2.0	\$46.62	
CERTIFICATED	GRADE 1 TEACHER TRAINING	ILALCO	MCKEEVER, ALLISON	1/24/17	4.0	\$51.13	
CERTIFICATED	GRADE 1 TEACHER TRAINING	DICK SCOBEE	DWYER, VERONICA	1/24/17	4.0	\$37.30	
CERTIFICATED	GRADE 1 TEACHER TRAINING	DICK SCOBEE	PFAB, TIMOTHY	1/24/17	4.0	\$53.40	
CERTIFICATED	GRADE 1 TEACHER TRAINING	GILDO REY	WRASPIR, SUSAN	1/24/17	4.0	\$51.13	
CERTIFICATED	LEARNING LAB PLANNING/PREP	ILALCO	CALLERO, NIKKI	1/31/17	2.0	\$38.80	
CERTIFICATED	LEARNING LAB PLANNING/PREP	ILALCO	MCKEEVER, ALLISON	1/31/17	2.0	\$51.13	
CERTIFICATED	LEARNING LAB PLANNING/PREP	ILALCO	MARTIN, MICHAEL	1/31/17	2.0	\$44.60	
CERTIFICATED	MS CONTENT TEAM MEETING	RAINIER	BAILEY, DEBORAH	9/7/16	6.0	\$28.33	
CERTIFICATED	MS CONTENT TEAM MEETING	CASCADE	SUTHERLAND, ERIN	9/7/16	6.0	\$29.10	
CERTIFICATED	MS CONTENT TEAM MEETING	OLYMPIC	STODDARD, DOUGLAS	9/7/16	4.0	\$32.28	
CERTIFICATED	MS CONTENT TEAM MEETING	OLYMPIC	HICKEN, REBECCA	9/7/16	4.0	\$28.72	
CERTIFICATED	PD SUPPORT STAFF/STUDENT ACHIEVEMENT	MT.VIEW SR HI	O'BRIEN, LEAH	9/7/16	130.0	\$49.51	
CERTIFICATED	PERFORMANCE TASK SCORING PROF DEV	RAINIER	ASTLE, ERIKA	11/28/16	18.0	\$53.40	
CERTIFICATED	PERFORMANCE TASK SCORING PROF DEV	RAINIER	DALOS, HARRIETT	11/28/16	18.0	\$48.01	
CERTIFICATED	PERFORMANCE TASK SCORING PROF DEV	RAINIER	ESPINOSA II, MICHAEL	11/28/16	18.0	\$31.99	
CERTIFICATED	PERFORMANCE TASK SCORING PROF DEV	RAINIER	FLORY, JONI	11/28/16	18.0	\$53.40	

CERTIFICATED	PERFORMANCE TASK SCORING PROF DEV	RAINIER	MCCORD, SHEILA	11/28/16	18.0	\$53.40
CERTIFICATED	PERFORMANCE TASK SCORING PROF DEV	RAINIER	RADCLIFF, BETH	11/28/16	18.0	\$53.40
CERTIFICATED	PERFORMANCE TASK SCORING PROF DEV	RAINIER	SNYDER, CHERYL	11/28/16	18.0	\$53.40
CERTIFICATED	PERFORMANCE TASK SCORING PROF DEV	RAINIER	TSAOUSSIS, ANGELENA	11/28/16	18.0	\$36.92
CERTIFICATED	PERFORMANCE TASK SCORING PROF DEV	RAINIER	TURNER, HAYLEY	11/28/16	18.0	\$28.33
CERTIFICATED	PERFORMANCE TASK SCORING PROF DEV	RAINIER	KLINE, JOAN	11/28/16	18.0	\$29.45
CERTIFICATED	PREP FOR DIGIZEN	MT.VIEW SR HI	LEE, JESSICA	1/1/17	10.0	\$45.26
CERTIFICATED	PREP WORK FOR HIV/AIDS PRESENTATION	AUB RIVERSIDE	EVANS, MARCUS	2/7/17	2.0	\$29.45
CERTIFICATED	REVIEW/SUBMIT NEW STUDENTS COE BIOLOGY	MT.VIEW SR HI	HOSTETTER, JAYME	1/22/17	2.0	\$53.40
CERTIFICATED	SCHOOL IMPROVEMENT STRATEGIES	HAZELWOOD	FINLEY SCOTT, ERIN	1/4/17	3.0	\$53.40
CERTIFICATED	SCHOOL IMPROVEMENT STRATEGIES	HAZELWOOD	RAPHAEL, KATHLEEN	1/4/17	3.0	\$52.36
CERTIFICATED	SCHOOL IMPROVEMENT STRATEGIES	HAZELWOOD	SAUERBIER, TORI	1/4/17	3.0	\$35.85
CERTIFICATED	SCHOOL IMPROVEMENT STRATEGIES	HAZELWOOD	WHARTON, TRICIA	1/4/17	3.0	\$53.40
CERTIFICATED	SCHOOL IMPROVEMENT STRATEGIES	HAZELWOOD	WINSLOW, LORI	1/4/17	3.0	\$29.08
CERTIFICATED	SCHOOL IMPROVEMENT STRATEGIES	HAZELWOOD	WRIGHT, SHELLEY	1/4/17	3.0	\$53.40
CERTIFICATED	SCHOOL IMPROVEMENT STRATEGIES	HAZELWOOD	CRAIN, LORI	1/4/17	3.0	\$46.63
CERTIFICATED	SCHOOL REFORM TO SUPPORT ELA/MATH	WEST AUBURN	PERSONS, THOMAS	2/2/17	2.0	\$35.17
CERTIFICATED	SCHOOL REFORM TO SUPPORT ELA/MATH	WEST AUBURN	ELLER, CLAIRE	2/2/17	2.0	\$34.08
CERTIFICATED	SCHOOL REFORM TO SUPPORT ELA/MATH	WEST AUBURN	BOWMAN, MARK	2/2/17	2.0	\$45.88
CERTIFICATED	SCHOOL REFORM TO SUPPORT ELA/MATH	WEST AUBURN	BOSCH, MICHAEL	2/2/17	2.0	\$38.42
CERTIFICATED	SCHOOL REFORM TO SUPPORT ELA/MATH	WEST AUBURN	ANDERSON, MARCELLE	2/2/17	2.0	\$53.40
CERTIFICATED	SCHOOL REFORM TO SUPPORT ELA/MATH	WEST AUBURN	SANDO, MICHAEL	2/2/17	2.0	\$45.88
CERTIFICATED	SCHOOL REFORM TO SUPPORT ELA/MATH	WEST AUBURN	PETER, CATHERINE	2/2/17	2.0	\$51.13
CERTIFICATED	SCHOOL REFORM TO SUPPORT ELA/MATH	WEST AUBURN	JOHNSON, ANNA	2/2/17	2.0	\$38.04
CERTIFICATED	SCHOOL REFORM TO SUPPORT ELA/MATH	WEST AUBURN	LUDWIGSON, DEREK	2/2/17	2.0	\$31.86
CERTIFICATED	SCHOOL REFORM TO SUPPORT ELA/MATH	WEST AUBURN	KEBBA, NOREEN	2/2/17	2.0	\$48.01
CERTIFICATED	SCHOOL REFORM TO SUPPORT ELA/MATH	WEST AUBURN	KROON, PAUL	2/2/17	2.0	\$53.40
CERTIFICATED	SCHOOL REFORM TO SUPPORT ELA/MATH	WEST AUBURN	ROBINSON, DAWN	2/2/17	2.0	\$38.14
CERTIFICATED	SCHOOL REFORM TO SUPPORT ELA/MATH	WEST AUBURN	DEWITT, WILLIAM	2/2/17	2.0	\$37.65
CERTIFICATED	SUPPORT FOR STUDENTS	RAINIER	ESPINOSA II, MICHAEL	1/31/17	20.0	\$31.99
CERTIFICATED	TEACHER EVAL SUPPORT	CHINOOK	DAVIDSON, JENNIFER	1/1/17	25.0	\$70.00
CERTIFICATED	TITLE TUTORING	AUB RIVERSIDE	MOGREN, JENNIFER	9/15/16	30.0	\$34.35
CERTIFICATED	TRANSITION DAY	AUB RIVERSIDE	BOTKIN, SARAH	1/31/17	7.0	\$34.35

#### Leave

**New Hire** CERTIFICATED PSYCHOLOGIST (.6) ANNEX MILLER, JULIE 2/8/2017 C1, S16

**Resignation** CERTIFICATED ASST PRINCIPAL MT.VIEW SR HI DUBAY, STEVEN 6/30/2017 RETIREMENT



## PERSONNEL REPORT - CLASSIFIED

### Curriculum-Noncurriculum

CLASSIFIED	ASSISTANT COACH - BASEBALL	MT.VIEW SR HI	GRANGRUTH, JORDON	2/27/2017	180.0	STIPEND - \$4,061
CLASSIFIED	ASSISTANT COACH - BASKETBALL (GIRLS)	CASCADE	OWENS, JEANETTE	2/3/2017	150.0	STIPEND - \$2,940
CLASSIFIED	ASSISTANT COACH - BASKETBALL (GIRLS)	AUB RIVERSIDE	GEE, KARINA	11/14/2016	252.0	STIPEND - \$4,061
CLASSIFIED	ASSISTANT COACH - FASTPITCH	MT.VIEW SR HI	BOCK, CHRISTINA	2/27/2017	90.0	STIPEND - \$2,030.5
CLASSIFIED	ASSISTANT COACH - SOCCER (BOYS)	MT.VIEW SR HI	BECERRA OROZCO, FERNANDO	2/27/2017	198.0	STIPEND - \$3,723
CLASSIFIED	ASSISTANT COACH - SOCCER (GIRLS)	RAINIER	LATTA, VANCE	11/1/2016	150.0	
CLASSIFIED	ASSISTANT COACH - SOCCER (GIRLS)	CASCADE	LAPLANT, CHRISTOPHER	2/3/2017	150.0	STIPEND - \$2,940
CLASSIFIED	ASSISTANT COACH - SOCCER (GIRLS)	MT. BAKER	FIGUEROA, BENJAMIN	2/8/2017	150.0	STIPEND - \$2,940
CLASSIFIED	ASSISTANT COACH - SWIM (BOYS)	AUB RIVERSIDE	HARDERSEN, KERRY	11/1/2016	198.0	STIPEND - \$3,723
CLASSIFIED	ASSISTANT COACH - TENNIS (GIRLS)	MT.VIEW SR HI	COGGER, LYNE	2/27/2017	180.0	STIPEND - \$4,424
CLASSIFIED	ASSISTANT COACH - TENNIS (GIRLS)	AUB RIVERSIDE	LINDELL, LAURA	2/15/2017	90.0	STIPEND - \$1,861
CLASSIFIED	ASSISTANT COACH - TRACK	MT.VIEW SR HI	WASHINGTON JR., MELTARRUS	2/27/2017	180.0	STIPEND - \$3,722
CLASSIFIED	ASSISTANT COACH - TRACK	MT.VIEW SR HI	GIBBONS, BENJAMIN	2/27/2017	180.0	STIPEND - \$4,424
CLASSIFIED	ASSISTANT COACH - WRESTLING	CASCADE	WASHBURN, KENT	2/6/2017	150.0	STIPEND - \$2,940
CLASSIFIED	ASSISTANT COACH - TRACK	MT.VIEW SR HI	HAWLEY, RICHARD	2/27/2017	180.0	STIPEND - \$3,722
CLASSIFIED	ATHLETIC TRAINER - SPRING	MT.VIEW SR HI	OSTRANDER, TIFFANY	2/27/2017	180.0	STIPEND - \$5,898
CLASSIFIED	COACH - WRESTLING (6TH GRADE)	CASCADE	WASHBURN, KENT	2/6/2017	40.0	STIPEND - \$7949
CLASSIFIED	EXTRA HOURS - COLLEGE & CAREER NIGHTS	DEPT OF STUDENT LRNG	DAUMIT, ELISABETH	1/16/2017	3.0	\$20.19
CLASSIFIED	EXTRA HOURS - COLLEGE & CAREER NIGHTS	DEPT OF STUDENT LRNG	ANDERSON, ANGELA	1/27/2017	4.0	\$18.79
CLASSIFIED	EXTRA HOURS - COLLEGE & CAREER NIGHTS	DEPT OF STUDENT LRNG	ENGLEHART, SHARON	1/27/2017	4.0	\$19.94
CLASSIFIED	EXTRA HOURS - COLLEGE & CAREER NIGHTS	DEPT OF STUDENT LRNG	DAUMIT, ELISABETH	1/27/2017	4.0	\$20.19
CLASSIFIED	EXTRA HOURS - DTAC/CHROMEBOOK	OLYMPIC	STARKEL, KELLY	11/25/2017	2.0	\$18.44
CLASSIFIED	EXTRA HOURS - ECEAP TRAINING	ANNEX	PROCHASKA, JESSICA	11/1/2016	10.0	\$18.09
CLASSIFIED	EXTRA HOURS - EXTENDED DAY PROGRAM	DEPT OF STUDENT LRNG	REAGAN, MICHELLE	10/24/2016	18.0	\$17.73
CLASSIFIED	EXTRA HOURS - EXTENDED DAY PROGRAM	DEPT OF STUDENT LRNG	CROSS, DANIEL	10/24/2016	18.0	\$17.73
CLASSIFIED	EXTRA HOURS - EXTENDED DAY PROGRAM	DEPT OF STUDENT LRNG	SCOTT, JEANE	10/24/2016	35.0	\$17.46
CLASSIFIED	EXTRA HOURS - FAWSA/WASFA SUPPORT	DEPT OF STUDENT LRNG	WILSON, RAESHELLE	2/8/2017	40.0	\$18.43
CLASSIFIED	EXTRA HOURS - HIGHLY CAPABLE	RAINIER	WICK, MELISSA	1/1/2017	3.0	\$18.44
CLASSIFIED	EXTRA HOURS - STRATEGIC PLAN COMMITTEE	HAZELWOOD	MENDEZ, LETICIA	1/1/2017	12.0	\$18.51
CLASSIFIED	EXTRA HOURS - STRATEGIC PLAN COMMITTEE	DEPT OF TECHNOLOGY	BURT, TIFFANY	1/1/2017	12.0	\$38.22
CLASSIFIED	EXTRA HOURS - STRATEGIC PLAN COMMITTEE	TRANSPORTATION	FORSBERG, RANDALL	1/1/2017	12.0	\$23.34
CLASSIFIED	EXTRA HOURS - UW TELL GRANT	OLYMPIC	MILLER, TAMMY	1/25/2017	4.0	\$19.44
CLASSIFIED	EXTRA HOURS - UW TELL GRANT	OLYMPIC	HUNTER, PILAR	1/5/2017	4.0	\$18.51
CLASSIFIED	HEAD COACH - SOCCER (GIRLS)	RAINIER	LATTA, BLAKE	11/1/2016	150.0	
CLASSIFIED	HEAD COACH - SOCCER (GIRLS)	CASCADE	QUITENO, KEVIN	2/3/2017	150.0	STIPEND - \$3,374
CLASSIFIED	INSTRUCTIONAL HOURS - ED REFORM	TERMINAL PARK	BETTS, RACHEL	9/26/2016	12.0	\$18.79
CLASSIFIED	INSTRUCTIONAL HOURS - LITERACY SUPPORT	LAKE VIEW	HOFFMAN, SUE ANN	1/11/2017	48.5	\$16.96
CLASSIFIED	INSTRUCTIONAL HOURS - STUDENT SUPPORT	AUBURN SR HIGH	FRAZIER, TREMAINE	11/1/2016	25.0	\$20.00
CLASSIFIED	INTERPRETER - MARSHALLESE	DEPT OF STUDENT LRNG	EMIROSE, JONATHAN	2/3/2017	100.0	\$17.65
CLASSIFIED	TUTORING	ANNEX	GRAVES, LONA	2/1/2017	8.0	\$19.43

### New Hire

CLASSIFIED	B-BUS DRIVER	TRANSPORTATION	COON, SARAH	1/20/2017	4.5	\$23.34 QUALIFIED APPLICANT
CLASSIFIED	C-CUSTODIAN A/183	OLYMPIC	KUSHNIRCHUK, VLADIMIR	1/18/2017	4.0	\$20.14 QUALIFIED APPLICANT
CLASSIFIED	O-AA CHILD NUTR	CHILD NUTRITION	MINTON, KRISTI	2/27/2017	6.0	\$18.59 QUALIFIED APPLICANT
CLASSIFIED	P-SPEC ED PATHWAYS	MT. VIEW SR HI	MALLETUFA, TAUATI	1/23/2017	6.5	\$18.09 QUALIFIED APPLICANT
CLASSIFIED	P-READING/MATH/P-PLAYGROUND	EVERGREEN HTS	HANSON, PATRICIA	1/19/2017	4.0/1.5	\$17.73/\$16.33 QUALIFIED APPLICANT
CLASSIFIED	P-READING/MATH	RAINIER	BRENAN, BARRY	1/19/2017	6.5	\$17.73 QUALIFIED APPLICANT
CLASSIFIED	P-READING/MATH/P-PLAYGROUND	GILDO REY	HEILBORN, CONNOR	1/20/2017	5.5/0.5	\$17.73/\$16.33 QUALIFIED APPLICANT
CLASSIFIED	P-SPEC ED ECE	DICK SCOBEE	ELSTON, JOCALYN	1/20/2017	6.5	\$18.09 QUALIFIED APPLICANT
CLASSIFIED	P-SPEC ED SPEC KIDS	TERMINAL PARK	SCHROEDER, COURTNEY	1/24/2017	6.0	\$18.09 QUALIFIED APPLICANT
CLASSIFIED	P-READING/MATH/P-RECESS	ARTHUR JACOBSEN	COOPER, TONI	1/26/2017	3.0/1.0	\$17.73/\$16.33 QUALIFIED APPLICANT
CLASSIFIED	P-ENGLISH LANG LEARNR	WASHINGTON	SANTOS LULE, GLEIDI	2/13/2017	4.5	\$17.73 QUALIFIED APPLICANT

### Rehire

### Resignation

CLASSIFIED	O-OM OFFICE MANAGER	MT.VIEW SR HI	WRIGHT, ANN	1/25/2017		PERSONAL
------------	---------------------	---------------	-------------	-----------	--	----------

### Student

CLASSIFIED	INTERN	DEPT OF TECHNOLOGY	ABENOJAR, MATHEW	2/1/2017	120.0	\$11.00 QUALIFIED APPLICANT
CLASSIFIED	INTERN	DEPT OF TECHNOLOGY	CHIKERENDA, ALEKSANDR	2/1/2017	120.0	\$11.00 QUALIFIED APPLICANT
CLASSIFIED	INTERN	DEPT OF TECHNOLOGY	MANN, GOBINDROOP	2/1/2017	120.0	\$11.00 QUALIFIED APPLICANT
CLASSIFIED	INTERN	DEPT OF TECHNOLOGY	MILES, LIBERTY	2/1/2017	120.0	\$11.00 QUALIFIED APPLICANT
CLASSIFIED	INTERN	DEPT OF TECHNOLOGY	ONYEMA, KAOBIMDI	2/1/2017	120.0	\$11.00 QUALIFIED APPLICANT
CLASSIFIED	INTERN	DEPT OF TECHNOLOGY	TONG, COLBY	2/1/2017	120.0	\$11.00 QUALIFIED APPLICANT
CLASSIFIED	INTERN	DEPT OF TECHNOLOGY	WEIDMAN, RYAN	2/1/2017	120.0	\$11.00 QUALIFIED APPLICANT
CLASSIFIED	LIFEGUARD/INSTRUCTOR	SWIM POOL	ORCUTT, DAWSON	1/24/2017		\$11.50 QUALIFIED APPLICANT
CLASSIFIED	LIFEGUARD/INSTRUCTOR	SWIM POOL	DECKER, JACKSON	1/31/2017		\$11.50 QUALIFIED APPLICANT

### Supervision

CERTIFICATED RESUME

Julie Miller-psychologist .6-Administrative Annex. Ms. Miller earned her bachelor degree at Western Oregon University. Julie has been a psychologist intern in the Auburn School District.

## BUILDING PROGRAM

1. Auburn High School Modernization and Reconstruction Project

Attached are copies of Change Order Nos. 108 and 109 for the Auburn High School Modernization and Reconstruction project which should be considered to permit a change in the construction contract amount.

Original Contract	\$80,570,700.00
Previously Approved	6,619,663.00
Change Order No. 108	85,756.00
Change Order No. 109	+\$ 140,127.00
New Contract Amount	<u>\$87,416,246.00</u>

Jeffrey Grose, executive director of capital projects, will be present to recommend acceptance of these change orders.

Recommendation: That Change Order Nos. 108 and 109 be accepted for the Auburn High School Modernization and Reconstruction project and the contract amount be increased by \$225,883.00 for a new contract amount of \$87,416,246.00.

2. Authorization to Call for Bids - Support Services Center Mechanical Systems Improvements Project

Authorization is requested to call for bids for the Support Services Center Mechanical Systems Improvements project. The project consists of replacement of the existing boiler and hot water tanks and related plumbing, duct, and controls work. The estimated construction cost is \$190,000.00 and will be funded from the Capital Projects fund.

Jeffrey Grose will be present to recommend this authorization.

Recommendation: That authorization be given to call for bids for the Support Services Center Mechanical Systems Improvements project.

# Change Order

---

PROJECT:	AUBURN HIGH SCHOOL MODERNIZATIONS & RECONSTRUCTION 800 Fourth Street NE, Auburn, WA 98002	CHANGE ORDER NO.:	<b>108</b>
		DATE:	February 22, 2017
TO CONTRACTOR:	Lydig Construction Company 3180 139 <sup>th</sup> Ave SE, Suite 110 Bellevue, WA 98005	CONTRACT DATED:	February 18, 2013
		ARCHITECT'S PROJECT NO.:	121-10016

The Contract is changed as follows:

1. PR-173	Provide miscellaneous structural modifications.	\$35,494.00
2. PR-175	Provide credit for discolored mortar joints in Auxiliary Gym 721.	\$(14,056.00)
3. CCA-471R2	Provide masonry veneer and flashing at southwest section of Auto Shop.	\$58,087.00
4. CCA-610	Provide electrical connections in Gym Lobby 071	\$4,628.00
5. CCA-612	Repair pre-cast stair tread in Gym Lobby 071.	<u>\$1,603.00</u>
	Total This Change Order	\$85,756.00

---

The original Contract Sum was	\$	80,570,700.00
Net change by previously authorized Change Orders	\$	6,619,663.00
The Contract Sum prior to this Change Order was	\$	87,190,363.00
The Contract Sum will be increased by this change order	\$	85,756.00
The new Contract Sum including this Change Order will be	\$	87,276,119.00

The Contract Time will be unchanged by 0 days  
The date of Substantial Completion as of the date of this Change Order therefore is: July 1, 2016

Pursuant to the Contract, the execution of this Change Order constitutes a waiver of claims by the Contractor arising out of the Work to be performed or deleted pursuant to this Change Order, except as specifically described herein. Reservation of rights will be deemed waived and are void unless the reserved rights are specifically described in detail to the satisfaction of the Owner and are initialed by the Owner.

NAC Architecture  
2025 First Avenue, Suite 300  
Seattle, WA 98121

Auburn School District #408  
915 Fourth Street NE  
Auburn, WA 98002

Lydig Construction Company  
3180 139<sup>th</sup> Ave SE, Suite 110  
Bellevue, WA 98005



By: \_\_\_\_\_  
Brent Compton  
Date: February 22, 2016

By: \_\_\_\_\_  
Cindi Blansfield  
Date: \_\_\_\_\_



By: \_\_\_\_\_  
Brandon Watts  
Date: 2-23-17

# Change Order

---

PROJECT:	AUBURN HIGH SCHOOL MODERNIZATIONS & RECONSTRUCTION 800 Fourth Street NE, Auburn, WA 98002	CHANGE ORDER NO.:	<b>109</b>
		DATE:	February 20, 2017
TO CONTRACTOR:	Lydig Construction Company 3180 139 <sup>th</sup> Ave SE, Suite 110 Bellevue, WA 98005	CONTRACT DATED:	February 18, 2013
		ARCHITECT'S PROJECT NO.:	121-10016

The Contract is changed as follows:

1. CCA-259	Provide concrete sawcutting and demolition in PAC.	\$29,242.00
2. CCA-285R2	Provide modifications to PAC loading area, stairways and Lobby 600.	\$70,075.00
3. CCA-504R	Provide wall finish work at PAC stairways and Lobby 600.	\$20,449.00
4. CCA-538	Provide wood veneer trim at PAC Vestibule 064.	\$3,250.00
5. CCA-591	Provide ceiling replacement at PAC Vestibule 064.	\$23,811.00
6. CCA-611	Provide credit for deletion of extra stock of wood paneling for PAC Lobby 600.	<u>\$(6,700.00)</u>
	Total This Change Order	\$140,127.00

---

The original Contract Sum was	\$	80,570,700.00
Net change by previously authorized Change Orders	\$	6,705,419.00
The Contract Sum prior to this Change Order was	\$	87,276,119.00
The Contract Sum will be increased by this change order	\$	140,127.00
The new Contract Sum including this Change Order will be	\$	87,416,246.00

The Contract Time will be unchanged by 0 days  
The date of Substantial Completion as of the date of this Change Order therefore is: July 1, 2016

Pursuant to the Contract, the execution of this Change Order constitutes a waiver of claims by the Contractor arising out of the Work to be performed or deleted pursuant to this Change Order, except as specifically described herein. Reservation of rights will be deemed waived and are void unless the reserved rights are specifically described in detail to the satisfaction of the Owner and are initialed by the Owner.

NAC Architecture  
2025 First Avenue, Suite 300  
Seattle, WA 98121

Auburn School District #408  
915 Fourth Street NE  
Auburn, WA 98002

Lydig Construction Company  
3180 139<sup>th</sup> Ave SE, Suite 110  
Bellevue, WA 98005



By: \_\_\_\_\_  
Brent Compton  
Date: February 20, 2016

By: \_\_\_\_\_  
Cindi Blansfield  
Date: \_\_\_\_\_



By: \_\_\_\_\_  
Brandon Watts  
Date: 2-23-17

## FINANCE

1. Vouchers

Vouchers will be presented.

Recommendation: That the vouchers be signed.

2. Contract for Insurance Broker-RFP 1148-Insurance Broker Services

On January 24, 2017, requests for proposals were received from the following six companies for insurance broker services:

Partners Group  
Brown and Brown Insurance  
Kibble and Prentice  
Arthur J Gallagher and Co.  
Sprague Israel Giles Insurance Co.  
Propel Insurance

The RFPs were evaluated and were scored by an evaluation team. Based upon the evaluation scores, interviews were conducted with the top four scoring insurance companies on February 9, 2017.

Following the interviews, the interview team met and produced the following interview scores:

Propel Insurance--71  
Partners Group--79  
Sprague Israel Giles--91  
Arthur Gallagher--79

Recommendation: That Cindi Blansfield, assistant superintendent of business and operations, be authorized to enter into a contract with Sprague Israel Giles for insurance broker services.

3. Resolution No. 1233-A Resolution to Increase the \$25,000 Imprest Checking Account for the Employee Benefits Trust Fund for Vision Services to \$50,000

Attached is a copy of Resolution No. 1233 to increase the \$25,000 imprest checking account to \$50,000 for paying employee vision claims in the Employee Benefits Trust Fund. The fund and checking account are required to administer the National Benefit Network Self-Funded Vision Plan adopted by the board by Resolution No. 1049 on August 9, 2004. The imprest checking account balance was increased to \$15,000 by Resolution 1068 on February 13, 2006. It was then increased again to \$25,000 by Resolution 1191 on April 28, 2014. Since that time, increased frequency and number of employee vision claims now require a balance of \$50,000 to efficiently manage the claims process.

Recommendation: That Resolution No. 1233 be adopted.

4. Financial Statements

Financial statements for the month of January will be presented for the board's information.

The following vouchers, as audited and certified by the Auditing Officer as required by RCW 42.24.080, and those expense reimbursement claims certified as required by RCW 42.24.090, are approved for payment. Those payments have been recorded on this listing which has been made available to the board.

As of February 27, 2017, the board, by a \_\_\_\_\_ vote, approves payments, totaling \$829,744.72. The payments are further identified in this document.

Total by Payment Type for Cash Account, US Bank of Washington:  
Warrant Numbers 436170 through 436343, totaling \$829,744.72

Secretary _____	Board Member _____
Board Member _____	Board Member _____
Board Member _____	Board Member _____

Check Nbr	Vendor Name	Check Date	Check Amount
436170	ABC SUN CONTROL INC.	02/27/2017	4,951.59
436171	ADI GLOBAL DISTRIBUTION	02/27/2017	425.67
436172	AGRISHOP INC	02/27/2017	61.83
436173	ALL HANDS COMMUNITY INTERPRETI	02/27/2017	2,928.95
436174	ALPINE PRODUCTS INC	02/27/2017	104.79
436175	ALTA LANGUAGE SERVICES INC	02/27/2017	60.00
436176	AMERICAN ACADEMY ~ GRADUATION	02/27/2017	13,113.04
436177	AMERICAN RED CROSS	02/27/2017	237.60
436178	ANDERSON, FAYNETTE	02/27/2017	516.28
436179	ANTONYUK, SVETLANA A	02/27/2017	11.00
436180	APOLLO MECHANICAL CONTRACTORS	02/27/2017	415.04
436181	ARAMARK UNIFORM SERVICES	02/27/2017	130.03
436182	AUBURN HIGH SCHOOL	02/27/2017	3,185.00
436183	AUBURN CHEVROLET	02/27/2017	32.08
436184	AUBURN YOUTH RESOURCES INC	02/27/2017	6,490.00
436185	BALI, MUKESH	02/27/2017	6.00
436186	BARGREEN ELLINGSON INC	02/27/2017	21.19



Check Nbr	Vendor Name	Check Date	Check Amount
436187	BIRTH TO THREE DEVELOPMENTAL C	02/27/2017	27,968.00
436188	BLAVKA, FRANK D	02/27/2017	9.50
436189	Vendor Continued Check	02/27/2017	0.00
436190	BRIDGESTONE AMERICAS TIRE OPER	02/27/2017	847.79
436191	CAMPBELL, ANNA M	02/27/2017	15.00
436192	CASE PARTS COMPANY	02/27/2017	253.13
436193	CDW GOVERNMENT INC	02/27/2017	81.69
436194	CENTURY LINK	02/27/2017	10,700.70
436195	CENTURY LINK	02/27/2017	38,646.16
436196	CHILDRENS THERAPY CENTER	02/27/2017	20,064.00
436197	COASTAL FARM & RANCH	02/27/2017	6.01
436198	COLLEGE BOARD	02/27/2017	32,326.50
436199	COMCAST	02/27/2017	36.30
436200	CONSOLIDATED ELECTRICAL DIST I	02/27/2017	1,307.74
436201	Vendor Continued Check	02/27/2017	0.00
436202	CUMMINS INC	02/27/2017	4,440.45
436203	CUSTOM ELECTRIC & CONTROLS	02/27/2017	2,865.39
436204	CUSTOM ELECTRIC & CONTROLS	02/27/2017	137.10
436205	DAMITZ, EHREN L	02/27/2017	6.00
436206	DATA RECOGNITION CORP	02/27/2017	670.76
436207	DEMCO INC	02/27/2017	635.86
436208	DEPT OF ENTERPRISE SERVICES	02/27/2017	150.00
436209	DIVERSITY RECRUITMENT PARTNERS	02/27/2017	299.00
436210	DM PACIFIC LLC	02/27/2017	6,745.20
436211	DRUG FREE BUSINESS	02/27/2017	119.00

Check Nbr	Vendor Name	Check Date	Check Amount
436212	DYNAMIC LANGUAGE CENTER INC	02/27/2017	8,114.04
436213	EBS HEALTHCARE STAFFING SERVIC	02/27/2017	3,412.50
436214	EMPLOYMENT SECURITY DEPT QTRLY	02/27/2017	16,993.74
436215	FEDERAL WAY SCHOOL DIST #210	02/27/2017	179,150.86
436216	FERGUSON ENTERPRISES INC #3007	02/27/2017	17.94
436217	FULL COMPASS SYSTEMS LTD	02/27/2017	950.85
436218	GITTS SPRING COMPANY	02/27/2017	87.64
436219	GOPHER SPORT	02/27/2017	889.60
436220	GOS PRINTING CORP	02/27/2017	767.23
436221	GRAINGER DEPT 810392688	02/27/2017	61.80
436222	GUARDIAN SECURITY SYSTEMS INC	02/27/2017	21,566.03
436223	GUARDIAN SECURITY SYSTEMS INC	02/27/2017	6,950.00
436224	HOWARD, ELEIZABETH L	02/27/2017	622.74
436225	J HENRY ENTERPRISE INC	02/27/2017	4,000.00
436226	JABJULAN, SANDY	02/27/2017	5.00
436227	JEFF UTECHT CONSULTING	02/27/2017	10,074.92
436228	JOHNSTONE SUPPLY	02/27/2017	112.88
436229	JP MORGAN CHASE BANK	02/27/2017	157.16
436230	KEITH, ASHLEY	02/27/2017	370.01
436231	KING COUNTY DIRECTORS ASSN	02/27/2017	72.77
436232	LIFT FOR LIFE	02/27/2017	500.00
436233	LIGHTSPEED TECHNOLOGIES INC	02/27/2017	1,746.39
436234	LOOMIS	02/27/2017	340.00
436235	MATTIOLI, RACHEL M	02/27/2017	6.00
436236	MAXIM STAFFING SOLUTIONS	02/27/2017	4,175.00

Check Nbr	Vendor Name	Check Date	Check Amount
436237	MICONTROLS INC	02/27/2017	153.54
436238	MICRO COMPUTER SYSTEMS INC	02/27/2017	858.48
436239	MORRIS, LINDSEY	02/27/2017	11.00
436240	MSC INDUSTRIAL SUPPLY CO	02/27/2017	627.86
436241	MUSIC & ARTS CENTER	02/27/2017	36.79
436242	NATIONAL MINORITY UPDATE	02/27/2017	590.00
436243	NW CASCADE INC	02/27/2017	537.57
436244	NW CASCADE INC	02/27/2017	1,812.45
436245	NW CASCADE INC	02/27/2017	1,372.91
436246	NW CASCADE INC	02/27/2017	2,993.68
436247	NW FAMILY CHURCH	02/27/2017	770.00
436248	OCCUPATIONAL HEALTH SERVICES	02/27/2017	500.00
436249	OKLOVSKI, KELLY	02/27/2017	6.00
436250	ORCA PACIFIC INC	02/27/2017	792.23
436251	OTTO BOCK HEALTHCARE LP	02/27/2017	6,062.66
436252	PACIFIC INTERPRETERS INC	02/27/2017	935.45
436253	PARK, JENNIFER	02/27/2017	41.30
436254	PATTERSON BUCHANAN FOBES & LEI	02/27/2017	5,821.52
436255	PETRO CARD	02/27/2017	22,147.50
436256	PHILIPS MEDICAL SYSTEMS	02/27/2017	350.18
436257	PLANK ROAD PUBLISHING INC	02/27/2017	222.40
436258	PROCARE THERAPY INC	02/27/2017	1,332.86
436259	PROGRESSUS THERAPY INC	02/27/2017	6,744.50
436260	PROMAXIMA MFG LTD	02/27/2017	95.00
436261	PUGET SOUND ENERGY ELECTRIC	02/27/2017	53,244.39

Check Nbr	Vendor Name	Check Date	Check Amount
436262	Vendor Continued Check	02/27/2017	0.00
436263	PUGET SOUND ENERGY NAT GAS	02/27/2017	39,789.64
436264	REALLY GREAT READING COMPANY L	02/27/2017	170.01
436265	Vendor Continued Check	02/27/2017	0.00
436266	REXEL INC	02/27/2017	1,135.95
436267	ROCK CHIP GUYS LLC	02/27/2017	689.86
436268	RODDA PAINT CO	02/27/2017	2,083.35
436269	RODRIGUEZ-GALINDO, ADRIAN	02/27/2017	835.40
436270	RODRIGUEZ, VICTOR	02/27/2017	12.75
436271	SANFORD, SCHARISHA M	02/27/2017	261.94
436272	SCHETKY NW SALES INC	02/27/2017	1,085.75
436273	SHRED IT USA LLC	02/27/2017	268.68
436274	SIMON, TIER E	02/27/2017	1,029.34
436275	SIX ROBBLEES INC	02/27/2017	22.49
436276	SMARSH INC	02/27/2017	100.00
436277	SOLIANI HEALTH	02/27/2017	4,020.00
436278	SOUND PUBLISHING INC	02/27/2017	165.75
436279	SPRAGUE ISRAEL GILES INC	02/27/2017	4,189.50
436280	STATE AUDITOR'S OFFICE LEGIS B	02/27/2017	17,804.23
436281	STEPHENSON, KATHRYN ANN	02/27/2017	13.89
436282	TED BROWN MUSIC COMPANY	02/27/2017	431.42
436283	TOP ECHELON CONTRACTING INC	02/27/2017	3,475.23
436284	TOTAL FILTRATION SERVICES INC	02/27/2017	475.38
436285	TOTAL RECLAIM INC	02/27/2017	1,899.99
436286	UELE, MARIA V	02/27/2017	841.66

Check Nbr	Vendor Name	Check Date	Check Amount
436287	UNIFIRST CORPORATION	02/27/2017	751.93
436288	UNIVERSAL LANGUAGE SERVICE INC	02/27/2017	1,321.25
436289	UNIVERSAL ATHLETIC SERVICE INC	02/27/2017	1,559.50
436290	UNIV OF WASH PROFESSIONAL & CO	02/27/2017	6,200.00
436291	VALLE, CLAUDIA	02/27/2017	67.50
436292	VISTA VENDING	02/27/2017	102.00
436293	WALMART SAMS CLUB	02/27/2017	30.51
436294	WASH ASSN OF SCHOOL BUSINESS O	02/27/2017	240.00
436295	WASH CEDAR & SUPPLY CO	02/27/2017	35.54
436296	WASH SCHOOL PERSONNEL ASSN	02/27/2017	550.00
436297	WASH TRACTOR INC	02/27/2017	265.47
436298	WASWUG/WSIPC	02/27/2017	300.00
436299	WHITE PRIVILEGE CONF ~ PRIVILE	02/27/2017	3,525.75
436300	WILBUR ELLIS COMPANY LLC	02/27/2017	316.18
436301	WSIPC NW ESD FISCAL AGENT	02/27/2017	25,311.40
436302	XYTRONIX RESEARCH & DESIGN INC	02/27/2017	228.99
436303	APPLE COMPUTER INC	02/27/2017	11,865.43
436304	CDW GOVERNMENT INC	02/27/2017	231.31
436305	D10 SIGNS & GRAPHICS	02/27/2017	7,440.53
436306	DAILY JOURNAL OF COMMERCE	02/27/2017	940.00
436307	DELL MARKETING LP % DELL USA L	02/27/2017	90,560.83
436308	DUTTON ELECTRIC COMPANY INC	02/27/2017	1,819.79
436309	EMERSON, LEO S	02/27/2017	9,000.00
436310	FIRST AMERICAN TITLE INSURANCE	02/27/2017	822.00
436311	IPEVO INC	02/27/2017	1,181.70

Check Nbr	Vendor Name	Check Date	Check Amount
436312	MICRO COMPUTER SYSTEMS INC	02/27/2017	3,043.01
436313	NAC ARCHITECTURE INC	02/27/2017	227.70
436314	NW MUNICIPAL ADVISORS	02/27/2017	7,204.52
436315	PHOENIX MECHANICAL INC	02/27/2017	4,760.05
436316	SCOTT AND FROM CO INC	02/27/2017	2,025.75
436317	TELDATA SYSTEMS INC	02/27/2017	2,197.70
436318	WELSH COMMISSIONING GROUPS INC	02/27/2017	5,244.00
436319	AMAZON CAPITAL SERVICES INC	02/27/2017	117.62
436320	CARTERS CUSTOM CREATIONS	02/27/2017	250.00
436321	COSTCO	02/27/2017	2,660.84
436322	EASTBAY INC	02/27/2017	156.14
436323	EK BEVERAGE COMPANY	02/27/2017	502.15
436324	EPD SERVICES INC	02/27/2017	414.00
436325	GALINATO, NARCISO	02/27/2017	101.00
436326	GREEN RIVER MUSIC EDUCATORS AS	02/27/2017	333.00
436327	HORTICULTURAL SERVICES INC	02/27/2017	260.54
436328	IMAGE MASTERS INC	02/27/2017	107.31
436329	JW PEPPER & SON INC	02/27/2017	235.43
436330	K D GRAZIE INC	02/27/2017	450.00
436331	MARKHAM, KARI ANN	02/27/2017	200.04
436332	MOORE, WILMA	02/27/2017	10.00
436333	MOVIE LICENSING USA	02/27/2017	453.00
436334	NGUYEN, TIEN	02/27/2017	10.00
436335	PACIFIC LUTHERAN UNIV ACCTS/RE	02/27/2017	120.00
436336	PACIFIC PUBLISHING COMPANY	02/27/2017	550.06

Check Nbr	Vendor Name	Check Date	Check Amount
436337	PARTAIN, BECCA	02/27/2017	40.00
436338	RINGER, SANDY	02/27/2017	200.00
436339	SPECIALTY FROZEN DISTIBUTING	02/27/2017	368.00
436340	STAPLES BUSINESS ADVANTAGE	02/27/2017	53.61
436341	STERLING ATHLETICS	02/27/2017	428.91
436342	TC SPAN AMERICA	02/27/2017	421.36
436343	UNIVERSAL ATHLETIC SERVICE INC	02/27/2017	902.42
174	Computer	Check(s) For a Total of	829,744.72

0	Manual	Checks For a Total of	0.00
0	Wire Transfer	Checks For a Total of	0.00
0	ACH	Checks For a Total of	0.00
174	Computer	Checks For a Total of	829,744.72
Total For 174 Manual, Wire Tran, ACH & Computer Checks			829,744.72
Less 0	Voided	Checks For a Total of	0.00
Net Amount			829,744.72

## F U N D S U M M A R Y

Fund	Description	Balance Sheet	Revenue	Expense	Total
10	General Fund	16,121.99	197.05	655,515.93	671,834.97
20	Capital Projects	-112.26	0.00	148,676.58	148,564.32
40	ASB Fund	-11.17	161.00	9,195.60	9,345.43



The following vouchers, as audited and certified by the Auditing Officer as required by RCW 42.24.080, and those expense reimbursement claims certified as required by RCW 42.24.090, are approved for payment. Those payments have been recorded on this listing which has been made available to the board.

As of February 27, 2017, the board, by a \_\_\_\_\_ vote, approves payments, totaling \$39,398.68. The payments are further identified in this document.

Total by Payment Type for Cash Account, US Bank Wire Transfers:  
Wire Transfer Payments 201600291 through 201600305, totaling \$39,398.68

Secretary _____	Board Member _____
Board Member _____	Board Member _____
Board Member _____	Board Member _____

Check Nbr	Vendor Name	Check Date	Check Amount
201600291	MUSEUM OF POP CULTURE MOPOP	02/27/2017	3,000.00
201600292	WASH DECA INC	02/27/2017	4,060.00
201600293	DK CUSTOM INK	02/27/2017	694.00
201600294	GOSNEY MOTOR PARTS INC	02/27/2017	683.12
201600295	STAPLES BUSINESS ADVANTAGE	02/27/2017	3,101.41
201600296	UNITED PARCEL SERVICE	02/27/2017	105.14
201600297	OFFICE DEPOT INC ACCT#8011 073	02/27/2017	200.41
201600298	KING COUNTY DIRECTORS ASSN	02/27/2017	14,444.31
201600299	WASH FLORAL SERVICE INC	02/27/2017	1,032.51
201600300	MEDCO SUPPLY CO INC	02/27/2017	1,568.02
201600301	GRIMES SEEDS	02/27/2017	414.68
201600302	CITY OF AUBURN UTILITIES	02/27/2017	6,134.41
201600303	REPUBLIC SERVICES #176	02/27/2017	3,816.83
201600304	VERIZON WIRELESS	02/27/2017	0.94
201600305	AT & T	02/27/2017	142.90

15 Wire Transfer Check(s) For a Total of 39,398.68

0	Manual	Checks For a Total of	0.00
15	Wire Transfer	Checks For a Total of	39,398.68
0	ACH	Checks For a Total of	0.00
0	Computer	Checks For a Total of	0.00
Total For 15	Manual, Wire Tran, ACH & Computer Checks		39,398.68
Less 0	Voided	Checks For a Total of	0.00
	Net Amount		39,398.68

## F U N D S U M M A R Y

Fund	Description	Balance Sheet	Revenue	Expense	Total
10	General Fund	13,806.95	0.00	14,822.52	28,629.47
40	ASB Fund	0.00	0.00	10,769.21	10,769.21

The following vouchers, as audited and certified by the Auditing Officer as required by RCW 42.24.080, and those expense reimbursement claims certified as required by RCW 42.24.090, are approved for payment. Those payments have been recorded on this listing which has been made available to the board.

As of February 27, 2017, the board, by a \_\_\_\_\_ vote, approves payments, totaling \$158,249.89. The payments are further identified in this document.

Total by Payment Type for Cash Account, AP Direct Dep Settlement Accou:  
ACH Numbers 161701303 through 161701386, totaling \$158,249.89

Secretary _____	Board Member _____
Board Member _____	Board Member _____
Board Member _____	Board Member _____

Check Nbr	Vendor Name	Check Date	Check Amount
161701303	Vendor Continued Check	02/27/2017	0.00
161701304	Vendor Continued Check	02/27/2017	0.00
161701305	Vendor Continued Check	02/27/2017	0.00
161701306	Vendor Continued Check	02/27/2017	0.00
161701307	AMAZON CAPITAL SERVICES INC	02/27/2017	4,137.21
161701308	ANDERSON, AMY LYNN	02/27/2017	25.96
161701309	ANDERSEN, STEPHANIE LYNN	02/27/2017	58.49
161701310	BERGER, MARIE L	02/27/2017	71.09
161701311	BLANSFIELD, CYNTHIA RENEE	02/27/2017	57.17
161701312	BUCCI, TIFFANY JEAN	02/27/2017	279.78
161701313	CAPPA, BRITTANY BELLE JEAN	02/27/2017	83.81
161701314	CAVENEY CONSULTANT SERVICES	02/27/2017	3,262.50
161701315	CUMBERLAND THERAPY SERVICES LL	02/27/2017	4,590.00
161701316	DANIELS, TREENA JOY	02/27/2017	56.70
161701317	DEBOLT, JULIE LYNN	02/27/2017	750.00
161701318	EDNETICS INC	02/27/2017	164.22
161701319	FAWVER, RICHARD ALLEN	02/27/2017	16.21

Check Nbr	Vendor Name	Check Date	Check Amount
161701320	FOOD SERVICES OF AMERICA *	02/27/2017	42,025.61
161701321	GALATI, ELIZABETH ANN	02/27/2017	84.61
161701322	GIBSON-MYERS, ELIZABETH ANN	02/27/2017	99.67
161701323	GUEST, MICHAELA DAWN	02/27/2017	33.22
161701324	HALFORD JR, DAVID LYNN	02/27/2017	562.90
161701325	HASSEN, MICHAEL R	02/27/2017	22.88
161701326	HOLLOMAN, LEONARD E	02/27/2017	69.50
161701327	HORTON, KIM L	02/27/2017	14.21
161701328	JEFFREYS, BRENDAN THOMAS	02/27/2017	336.54
161701329	KERR, JANIS Y	02/27/2017	24.57
161701330	KIM, MIRA	02/27/2017	11.82
161701331	KING, NICOLE JANE	02/27/2017	34.93
161701332	KINKELA, MERILEE	02/27/2017	35.47
161701333	KROON, PAUL S	02/27/2017	13.13
161701334	LEONARD, SHAWNA R	02/27/2017	94.60
161701335	LINDELL, ELENA MARY	02/27/2017	50.00
161701336	MASON, MALIA KATHLEEN	02/27/2017	34.61
161701337	MASON, RACHEL E	02/27/2017	9.83
161701338	MAYER, MARGARET S	02/27/2017	91.54
161701339	MCCALL, ELIZABETH ANN	02/27/2017	47.08
161701340	NESPER, BRENNAL LOUISE	02/27/2017	82.71
161701341	POTEET, JENNIFER L	02/27/2017	20.87
161701342	RICE, SARA ELIZABETH	02/27/2017	168.71
161701343	RICHARDS, CHERYL A	02/27/2017	100.58
161701344	SAXON, JAN K	02/27/2017	33.22

Check Nbr	Vendor Name	Check Date	Check Amount
161701345	SHOCKLEY, FLORENCE MARGARET	02/27/2017	50.00
161701346	SLATER, ROBIN SHANTELLE	02/27/2017	31.76
161701347	SMITH, TORI ANN	02/27/2017	78.06
161701348	Vendor Continued Check	02/27/2017	0.00
161701349	SUNBELT STAFFING LLC	02/27/2017	20,457.00
161701350	THIBODEAU, BECKY LYNN	02/27/2017	192.50
161701351	TURNER, MEGAN DENISE	02/27/2017	27.12
161701352	Vendor Continued Check	02/27/2017	0.00
161701353	Vendor Continued Check	02/27/2017	0.00
161701354	Vendor Continued Check	02/27/2017	0.00
161701355	Vendor Continued Check	02/27/2017	0.00
161701356	US BANK CORP PROCUREMENT CARD	02/27/2017	27,130.49
161701357	US BANK CORP TRAVEL PAYMENT	02/27/2017	22,427.21
161701358	Vendor Continued Check	02/27/2017	0.00
161701359	Vendor Continued Check	02/27/2017	0.00
161701360	US BANK CTE P CARDS	02/27/2017	6,456.50
161701361	WHITE, BETH ANN	02/27/2017	52.34
161701362	WICKSTROM, ERIN L	02/27/2017	154.50
161701363	WILKINSON, LISA M	02/27/2017	128.05
161701364	WILSON, NOLA RAE	02/27/2017	174.64
161701365	WITTERS, DONALD DAVID	02/27/2017	22.41
161701366	WITZEL, JEANNETTE CHARLOTTE	02/27/2017	91.00
161701367	TECHNOLOGY EXPRESS	02/27/2017	2,857.56
161701368	US BANK CORP PROCUREMENT CARD	02/27/2017	292.91
161701369	AMAZON CAPITAL SERVICES INC	02/27/2017	107.96

Check Nbr	Vendor Name	Check Date	Check Amount
161701370	AUBERT, DOUGLAS JAMES	02/27/2017	43.84
161701371	BENEDICT, MERI MUIRHEAD	02/27/2017	29.95
161701372	DESJARDINS, ANGELA MICHELLE	02/27/2017	71.68
161701373	FOOD SERVICES OF AMERICA	02/27/2017	650.98
161701374	HYDE, SHANNON LEA	02/27/2017	14.77
161701375	PIZZA TIME	02/27/2017	2,168.98
161701376	RODRIGUEZ, JESSE ANN	02/27/2017	20.58
161701377	SLATER, ROBIN SHANTELLE	02/27/2017	68.76
161701378	SMETHERAM, CAROL JEAN	02/27/2017	107.22
161701379	THOMAS, SARA ELIZABETH	02/27/2017	43.80
161701380	Vendor Continued Check	02/27/2017	0.00
161701381	Vendor Continued Check	02/27/2017	0.00
161701382	Vendor Continued Check	02/27/2017	0.00
161701383	US BANK CORP PROCUREMENT CARD	02/27/2017	14,233.14
161701384	US BANK CORP TRAVEL PAYMENT	02/27/2017	1,264.01
161701385	US BANK CORP PROCUREMENT CARD	02/27/2017	399.22
161701386	US BANK CORP TRAVEL PAYMENT	02/27/2017	745.00
84	ACH	Check(s) For a Total of	158,249.89

0	Manual	Checks For a Total of	0.00
0	Wire Transfer	Checks For a Total of	0.00
84	ACH	Checks For a Total of	158,249.89
0	Computer	Checks For a Total of	0.00
Total For 84	Manual, Wire Tran, ACH & Computer	Checks	158,249.89
Less 0	Voided	Checks For a Total of	0.00
	Net Amount		158,249.89

## F U N D S U M M A R Y

Fund	Description	Balance Sheet	Revenue	Expense	Total
10	General Fund	-713.23	0.00	135,842.76	135,129.53
20	Capital Projects	0.00	0.00	3,150.47	3,150.47
40	ASB Fund	-338.82	0.00	19,164.49	18,825.67
70	Private Purpose	0.00	0.00	1,144.22	1,144.22

**AUBURN SCHOOL DISTRICT NO. 408**

**RESOLUTION NO. 1233**

**A RESOLUTION TO INCREASE THE EMPLOYEE BENEFITS TRUST FUND \$25,000 IMPREST CHECKING ACCOUNT TO \$50,000**

**WHEREAS**, Resolution 1049 adopted the National Benefit Network (NBN) Self-Funded Vision Plan, and

**WHEREAS**, Resolution 1050 established a \$10,000 imprest checking account in the Employee Benefits Fund in order to pay employee vision claims on September 27, 2004, and

**WHEREAS**, Resolution 1068 increased the imprest checking account to \$15,000 in the Employee Benefits Fund in order to pay employee vision claims on February 13, 2006, and

**WHEREAS**, Resolution 1191 increased the imprest checking account to \$25,000 in the Employee Benefits Fund in order to pay employee vision claims on April 28, 2014, and

**WHEREAS**, efficient management of the new plan now requires that the \$25,000 imprest checking account be increased to \$50,000 in order to pay increased employee claims in a timely manner,

**NOW, THEREFORE, BE IT RESOLVED**, to increase the Employee Benefits Trust Fund \$25,000 imprest checking account to \$50,000.

**ADOPTED** this 27<sup>th</sup> day of February, 2017.

**BOARD OF DIRECTORS  
AUBURN SCHOOL DISTRICT NO. 408**

\_\_\_\_\_  
\_\_\_\_\_  
\_\_\_\_\_  
\_\_\_\_\_  
\_\_\_\_\_

**ATTEST:**

\_\_\_\_\_  
Secretary to the Board



AUBURN SCHOOL DISTRICT NO. 408

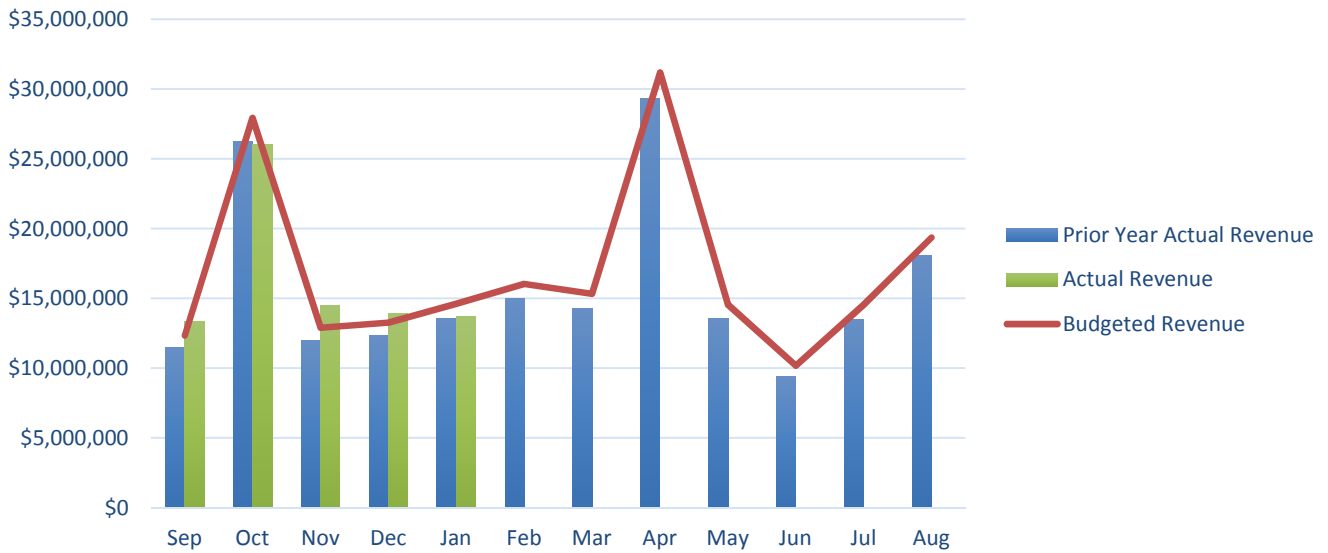
FINANCIAL STATEMENTS  
FOR  
JANUARY 2017

AUBURN SCHOOL DISTRICT NO. 408  
MONTHLY FINANCIAL REPORTS  
TABLE OF CONTENTS

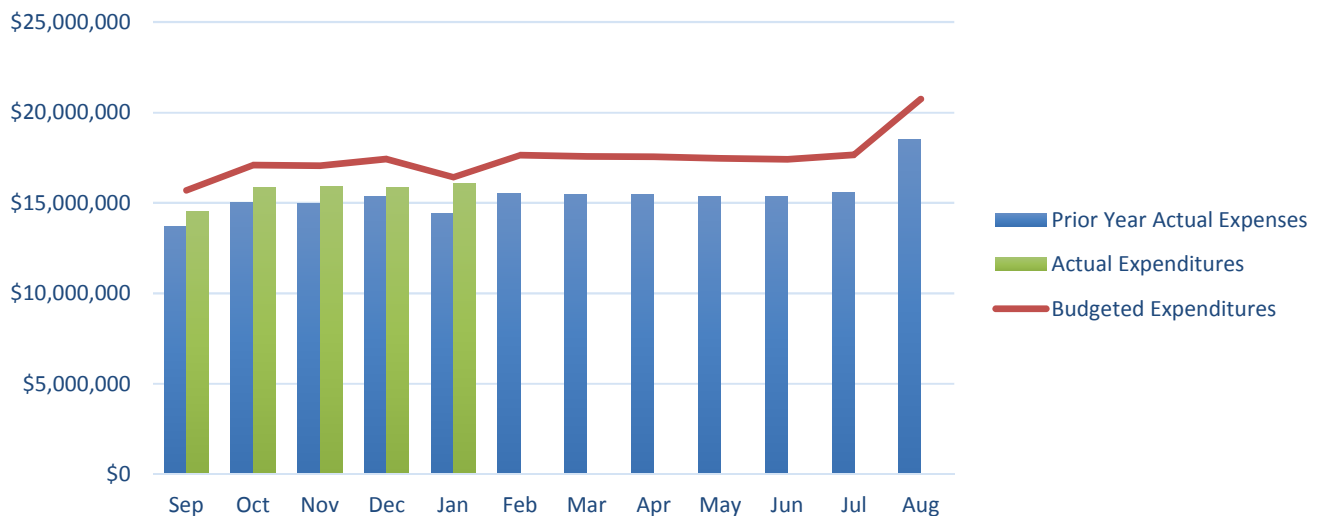
- I. Revenue and Expenditure Comparison
- II. Combined Balance Sheet
  - A. Governmental Funds
  - B. Trust Funds and Account Groups
- III. Budget Status Reports
  - A. General Fund
  - B. Transportation Vehicle Fund
  - C. Capital Projects Fund
  - D. Debt Service Fund
  - E. ASB Fund
    - 1. High Schools
    - 2. Middle Schools
- IV. Private Purpose Trust Fund Statement
- V. NBN Employee Benefits Trust Fund Statement
- VI. Local Grants

**AUBURN SCHOOL DISTRICT No. 408**  
**GENERAL FUND**  
**2016 - 2017**

**Monthly Revenue Comparison**



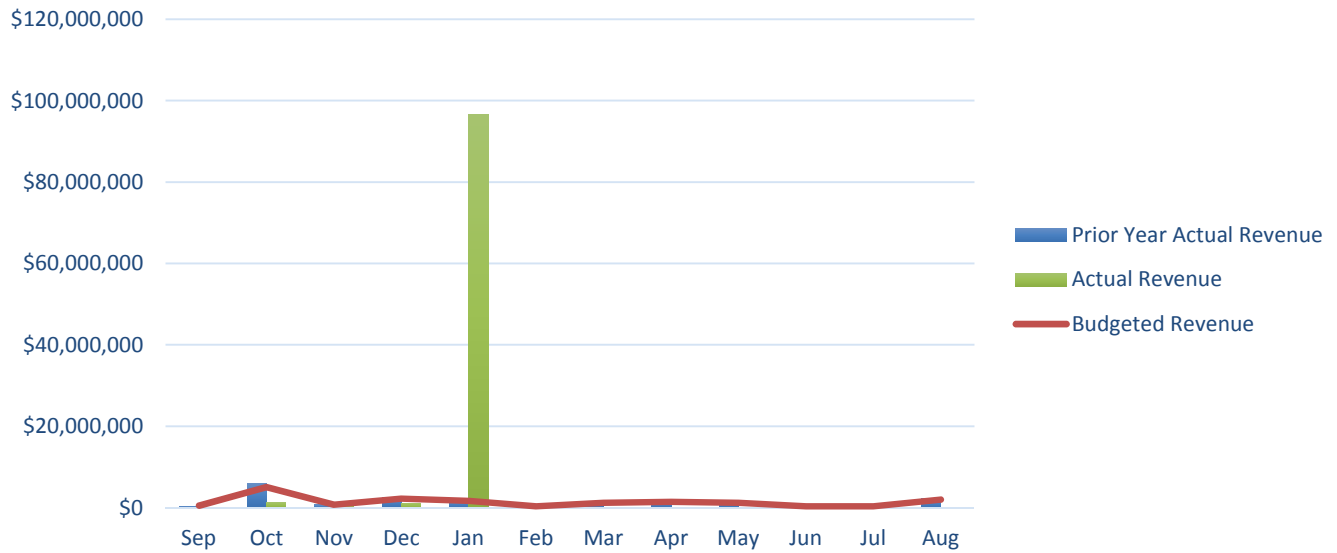
**Monthly Expenditure Comparison**



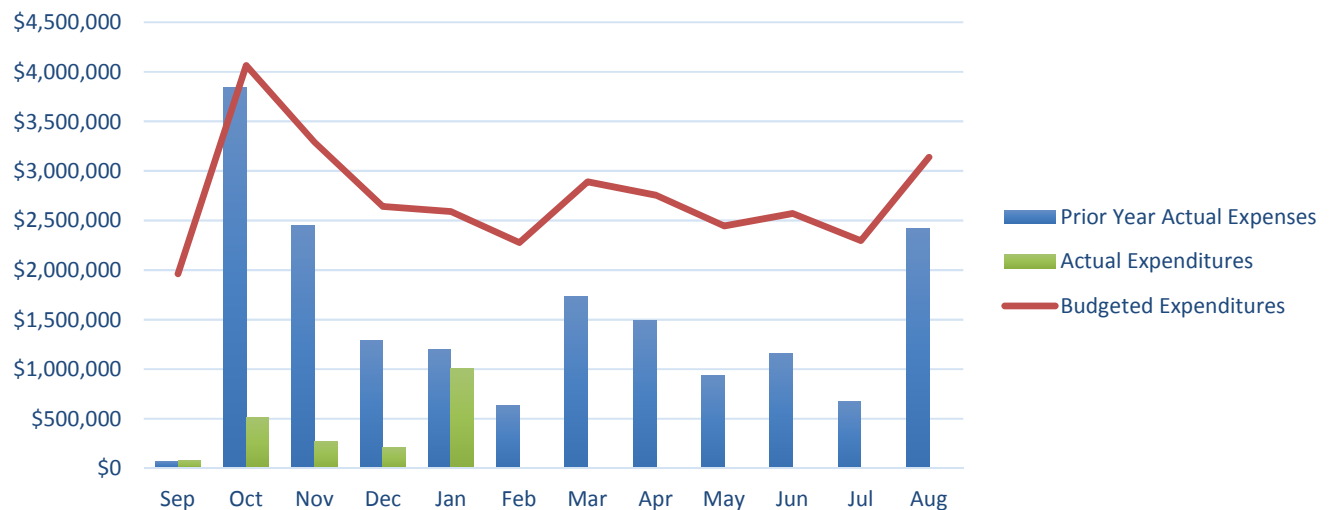
\*A prior year proportional average has been used to calculate the monthly Budget for both tables above.

**AUBURN SCHOOL DISTRICT No. 408**  
**CAPITAL PROJECTS**  
**2016 - 2017**

**Monthly Revenue Comparison**



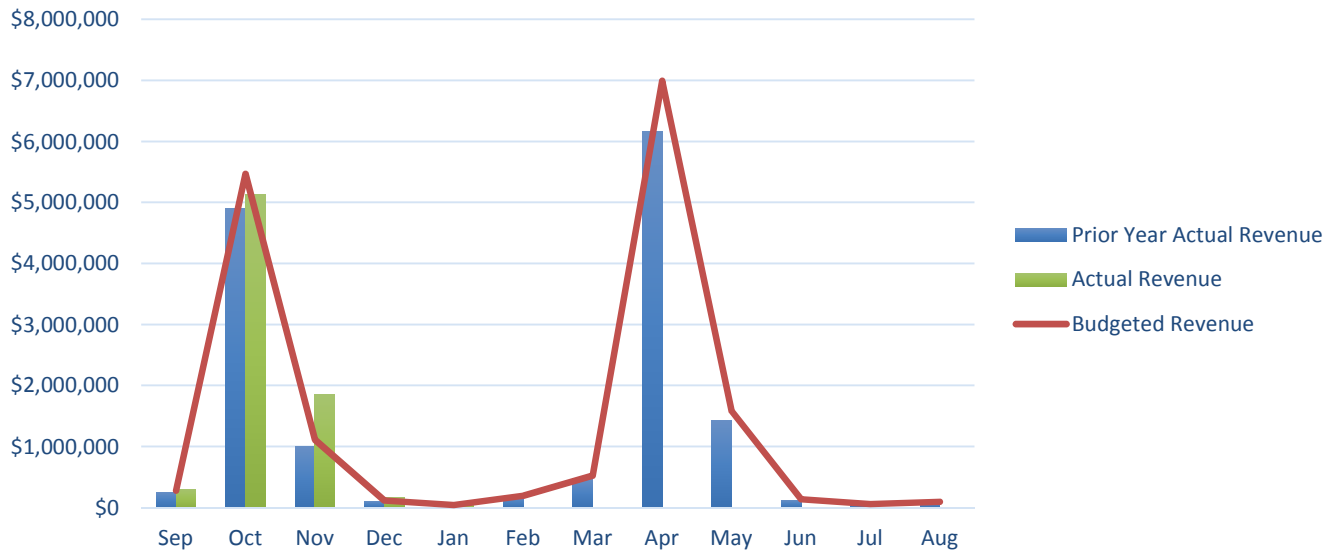
**Monthly Expenditure Comparison**



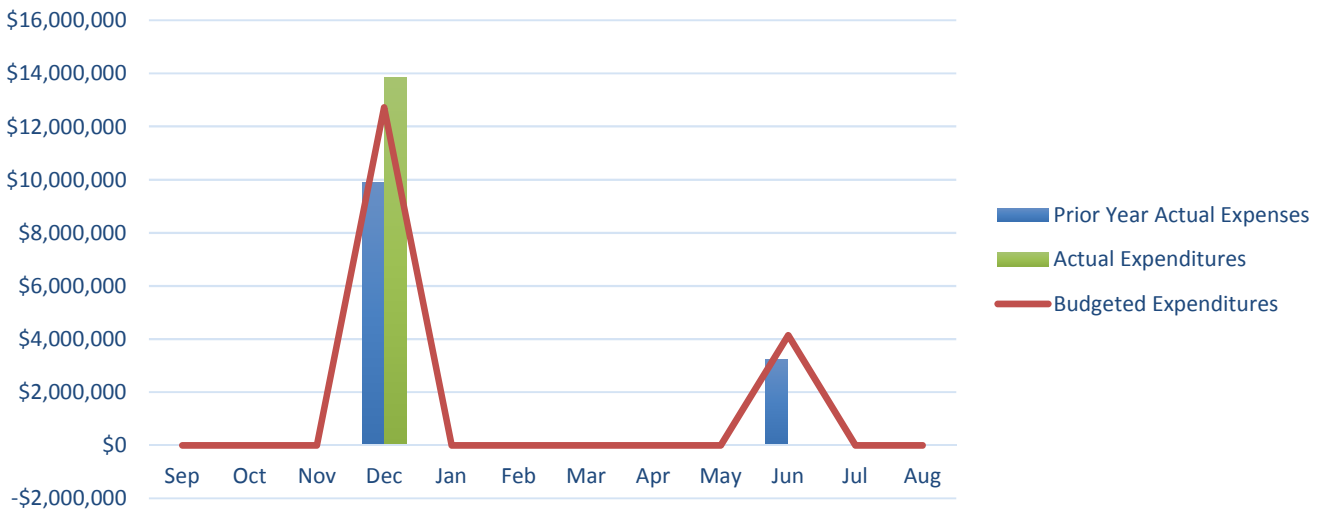
\*A prior year proportional average has been used to calculate the monthly Budget for both tables above.

**AUBURN SCHOOL DISTRICT No. 408**  
**DEBT SERVICE**  
**2016 - 2017**

### Monthly Revenue Comparison



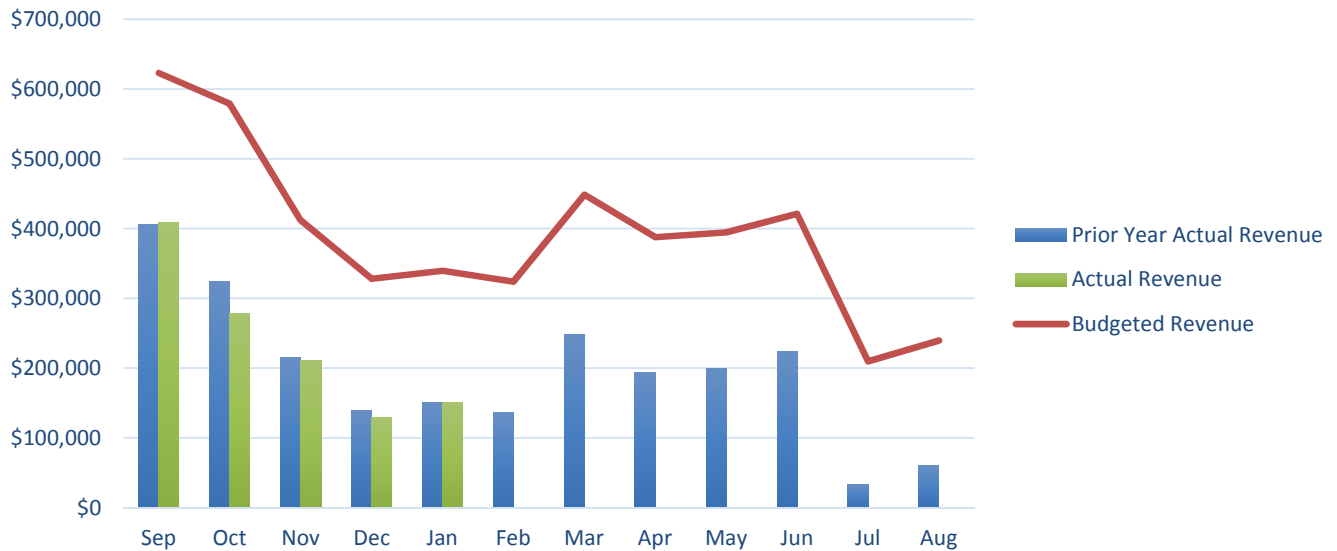
### Monthly Expenditure Comparison



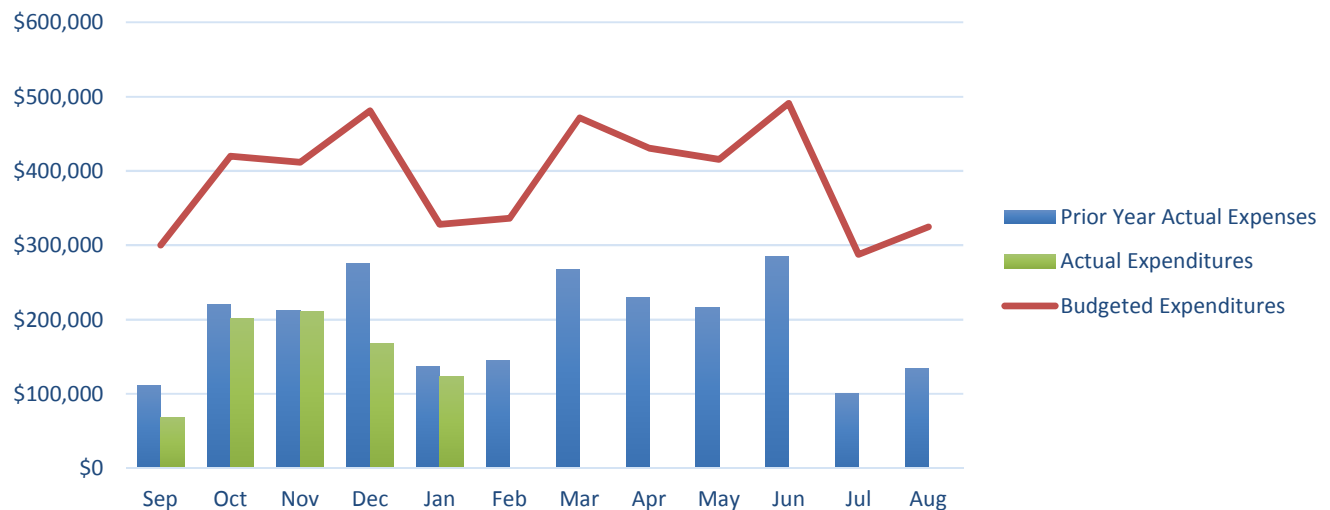
\*A prior year proportional average has been used to calculate the monthly Budget for both tables above.

**AUBURN SCHOOL DISTRICT No. 408**  
**ASB FUND**  
**2016 - 2017**

### Monthly Revenue Comparison



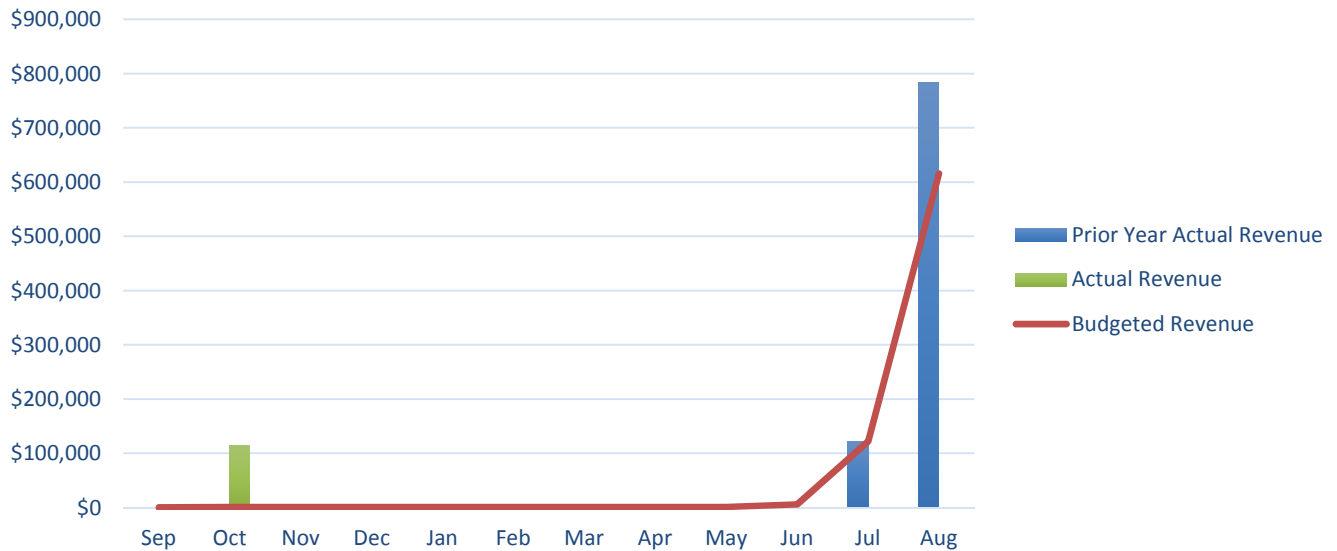
### Monthly Expenditure Comparison



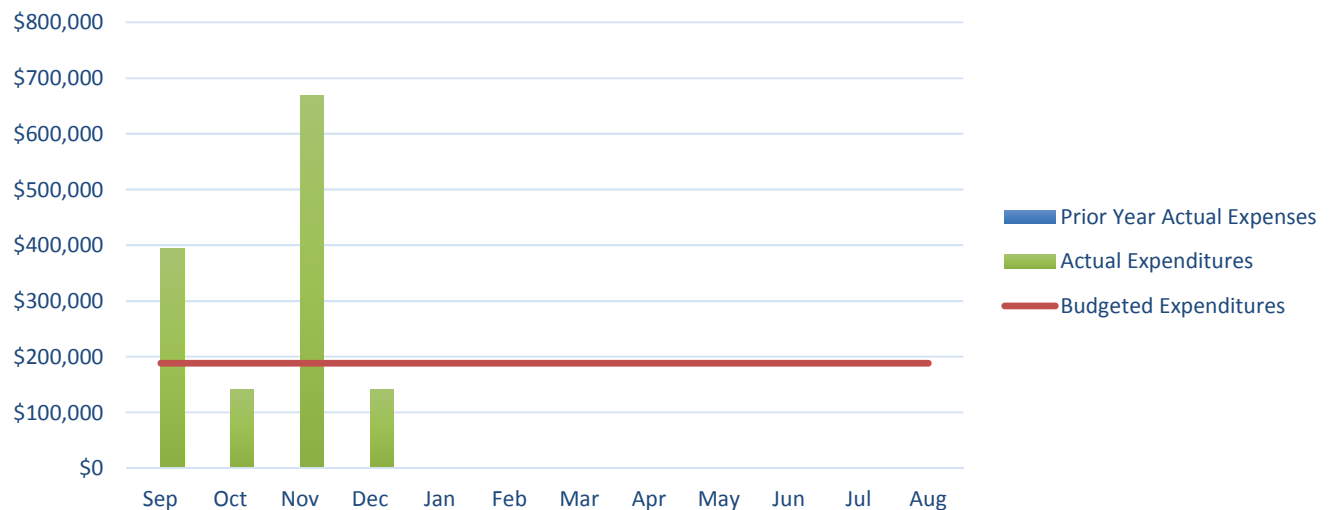
\*A prior year proportional average has been used to calculate the monthly Budget for both tables above.

**AUBURN SCHOOL DISTRICT No. 408**  
**TRANSPORTATION FUND**  
**2016 - 2017**

### Monthly Revenue Comparison



### Monthly Expenditure Comparison



\*A prior year proportional average has been used to calculate the monthly Budget for both tables above.

**AUBURN SCHOOL DISTRICT NO. 408**  
**BALANCE SHEETS - GOVERNMENTAL FUNDS**  
**January 31, 2017**

	GENERAL	TRANSPORT VEHICLE	CAPITAL PROJECTS	DEBT SERVICE	ASB
<b>ASSETS</b>					
Cash and cash equivalents	17,158,931	1,763,253	140,629,449	1,450,253	1,870,576
Restricted Cash	17,153	2,054	70,239	22,267	3,246
Property taxes receivable	41,812,691	-48	3,820,662	25,280,051	
Accounts receivable	219,068				0
Interest receivable	0	0	0	0	0
Due from other funds	15	0	0	0	0
Due from other governments	0		133,695		
Inventory of supplies	278,636				
Prepays	0				0
Total Assets	59,486,495	1,765,259	144,654,045	26,752,572	1,873,821
<b>LIABILITIES and EQUITY</b>					
Liabilities:					
Accounts payable	58,382	0	33,491		14,300
Estimated Unemployment Payable	7,111				
Due to other governments	8,070	964	0	10,488	1,529
Due to other funds	0		4,054		15
Deferred revenue	41,921,035	-48	3,821,273	25,280,051	0
Total Liabilities	41,994,597	916	3,858,818	25,290,539	15,844
Equity:					
Non Spendable Fund Bal--Inven	395,350				251
Restricted for Carryovers	389,618				
Restricted for Food Services	2,533,213				
Restricted from Bond Proceeds			6,240,314		
Restricted from Levy Proceeds			6,888,608		
Restricted from State Proceeds			21,835,336		
Restricted from Impact Fees			392,672		
Restricted for Fund Purpose		2,991,760			1,857,726
Restricted to Debt Service				1,655,164	
Assigned to Contingencies	300,000				
Assigned to Other Purposes	1,800,000				
Assigned To Fund Purposes		-1,227,416	105,438,296	-193,132	
Unassigned Fund Balance	12,073,717				
Total Equity	17,491,898	1,764,343	140,795,227	1,462,032	1,857,977
Total Liabilities and Equity	59,486,495	1,765,259	144,654,045	26,752,572	1,873,821



**AUBURN SCHOOL DISTRICT NO. 408**  
**BALANCE SHEETS - TRUST FUNDS AND ACCOUNT GROUPS**  
**January 31, 2017**

	TRUST FUNDS		ACCOUNT GROUPS	
	PRIV PURP TRUST	NBN EMPLOY BENEFITS	GENERAL FIXED ASSETS	GENERAL LONG-TERM DEBT
<b>ASSETS</b>				
Cash and cash equivalents	582,183	177,204		
Restricted Cash	1,527	446		
Due From Other Funds	0	0		
Accounts receivable				
Interest receivable	0	0		
Fixed assets			391,983,760	
Other debits:				
Amount available in Debt Service Fund				1,462,032
Amount to be provided for retirement of general long-term obligations				107,224,981
Total Assets	583,711	177,650	391,983,760	108,687,013
<b>LIABILITIES and EQUITY</b>				
Liabilities:				
Accounts Payable	96	10,291		
Compensated absences payable				3,737,013
Due to other governments	719	210		
Due To Other Funds		0		
General obligation bonds payable				104,950,000
Total Liabilities	815	10,501	0	108,687,013
Equity:				
Investment in general fixed assets			391,983,760	
Fund balances:				
Assigned To Fund Purposes	582,896	167,150		
Total Equity	582,896	167,150	391,983,760	0
Total Liabilities and Equity	583,711	177,650	391,983,760	108,687,013

<p align="center">Auburn School District No. 408 General Fund Budget Status Summary</p>	
---	--

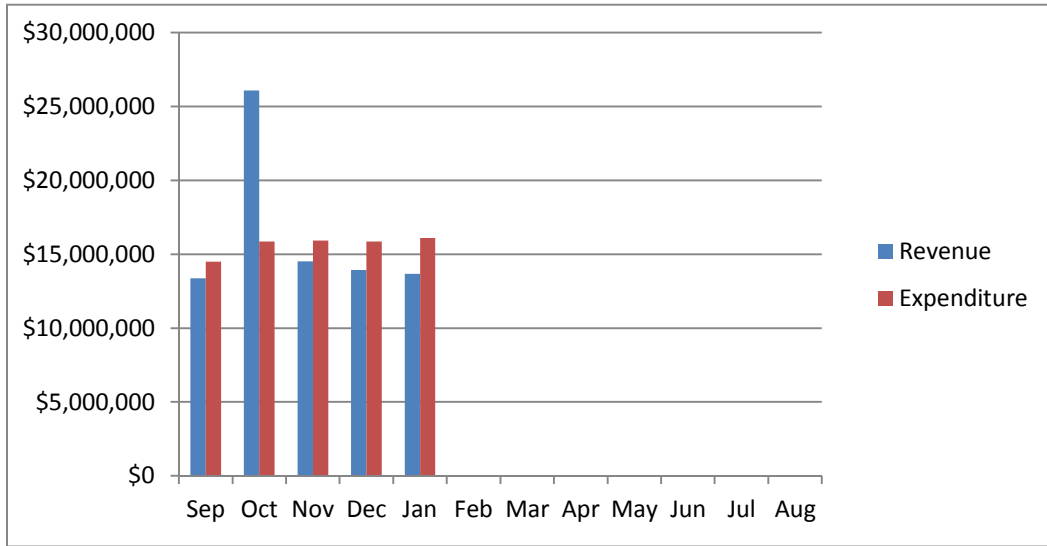
	REVENUE			EXPENDITURES			FUND BALANCE
Fiscal Year 2016 - 17	Average Cum %	Actual Cum %	Actual Monthly	Average Cum %	Actual Cum %**	Monthly Amount	Beginning 14,186,101
September	6.61%	6.61%	13,355,981	6.91%	10.93%	14,497,803	13,044,279
October	19.50%	19.50%	26,063,463	14.47%	18.42%	15,849,158	23,258,584
November	26.67%	26.67%	14,507,532	22.06%	25.76%	15,919,984	21,846,131
December	33.56%	33.56%	13,924,260	29.62%	33.03%	15,847,592	19,922,799
January	40.32%	40.32%	13,661,847	37.29%	40.69%	16,092,747	17,491,898
February							
March							
April							
May							
June							
July							
August							
			Revenue			Expenditure	Fund Balance
Anticipated - First Budget			202,175,757			209,728,203	6,447,554
Actual - At Fiscal Year End							
** Includes encumbrances.							

	REVENUE			EXPENDITURES			FUND BALANCE
Fiscal Year 2015 - 16	Average Cum %	Actual Cum %	Actual Monthly	Average Cum %	Actual Cum %**	Monthly Amount	Beginning 10,306,157
September	5.97%	5.97%	11,443,447	7.04%	11.20%	13,737,159	8,016,795
October	19.65%	19.65%	26,224,267	14.73%	19.06%	15,023,392	19,231,249
November	25.63%	25.63%	11,472,737	22.42%	26.38%	14,993,672	15,710,314
December	31.80%	32.11%	11,821,950	30.28%	33.87%	15,345,106	12,778,481
January	38.89%	39.40%	13,587,231	37.66%	41.10%	14,399,492	12,358,800
February	46.68%	47.19%	14,942,850	45.62%	48.82%	15,537,546	11,764,104
March	54.13%	54.64%	14,274,773	53.55%	56.79%	15,480,856	10,558,020
April	69.18%	69.69%	28,852,294	61.47%	64.34%	15,460,114	23,950,200
May	76.23%	76.99%	13,531,793	69.34%	72.07%	15,370,375	22,574,615
June	81.12%	81.88%	9,376,207	77.19%	79.81%	15,325,100	16,625,722
July	88.18%	88.93%	13,517,675	85.16%	87.68%	15,557,013	14,586,384
August	97.61%	98.36%	18,085,184	94.63%	94.63%	18,480,153	14,186,101
			Revenue			Expenditure	Fund Balance
Anticipated - First Budget			191,714,925			195,187,148	6,527,777
Actual - At Fiscal Year End			188,577,307			184,701,714	14,186,101
** Includes encumbrances.							

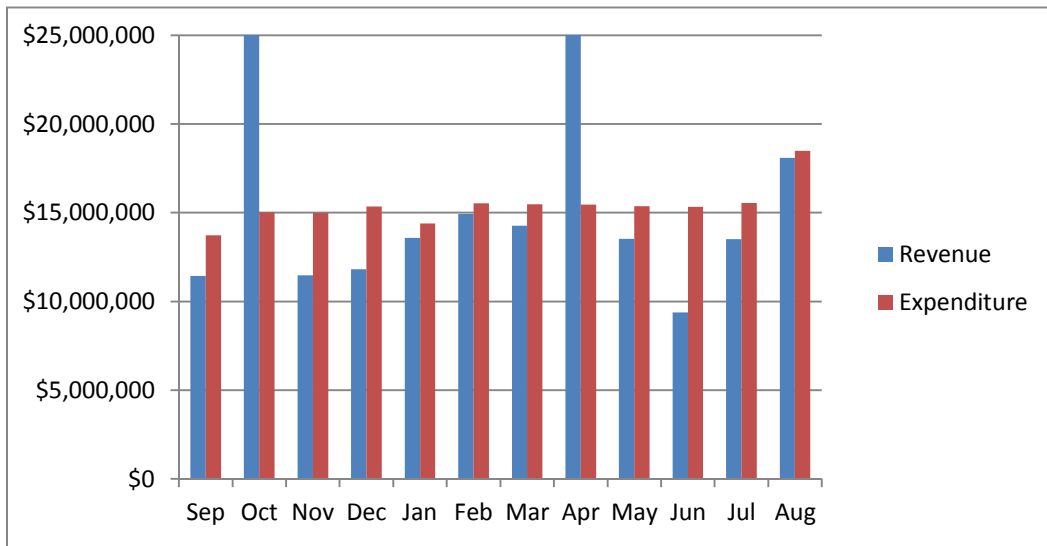
	REVENUE			EXPENDITURES			FUND BALANCE
Fiscal Year 2014 - 15	Average Cum %	Actual Cum %	Actual Monthly	Average Cum %	Actual Cum %**	Monthly Amount	Beginning 9,416,432
September	5.64%	5.63%	9,600,271	6.59%	11.23%	11,493,198	7,523,505
October	19.96%	19.93%	24,381,007	14.62%	18.99%	13,998,540	17,905,973
November	27.27%	26.57%	12,457,337	22.71%	26.78%	14,097,667	15,140,231
December	33.90%	33.18%	11,280,745	30.57%	34.44%	13,715,438	12,705,623
January	40.39%	39.91%	11,049,790	38.24%	42.20%	13,366,760	10,814,353
February	46.91%	46.82%	11,114,885	46.01%	49.17%	13,541,044	8,936,027
March	54.03%	54.20%	12,123,196	54.11%	54.11%	14,124,959	7,367,771
April	68.71%	69.23%	24,991,693	62.38%	64.91%	14,418,327	18,551,214
May	76.52%	77.04%	13,295,630	70.27%	72.61%	13,753,159	18,093,684
June	81.15%	81.97%	7,883,016	78.32%	80.67%	14,037,824	12,442,773
July	88.71%	89.74%	12,879,517	86.60%	88.58%	14,437,607	11,242,453
August	98.02%	99.05%	15,843,044	96.23%	96.22%	16,779,340	10,306,157
			Revenue			Expenditure	Fund Balance
Anticipated - First Budget			170,274,046			174,344,494	5,962,883
Actual - At Fiscal Year End			168,650,646			167,760,921	10,306,157
** Includes encumbrances.							

# AUBURN SCHOOL DISTRICT No. 408 GENERAL FUND

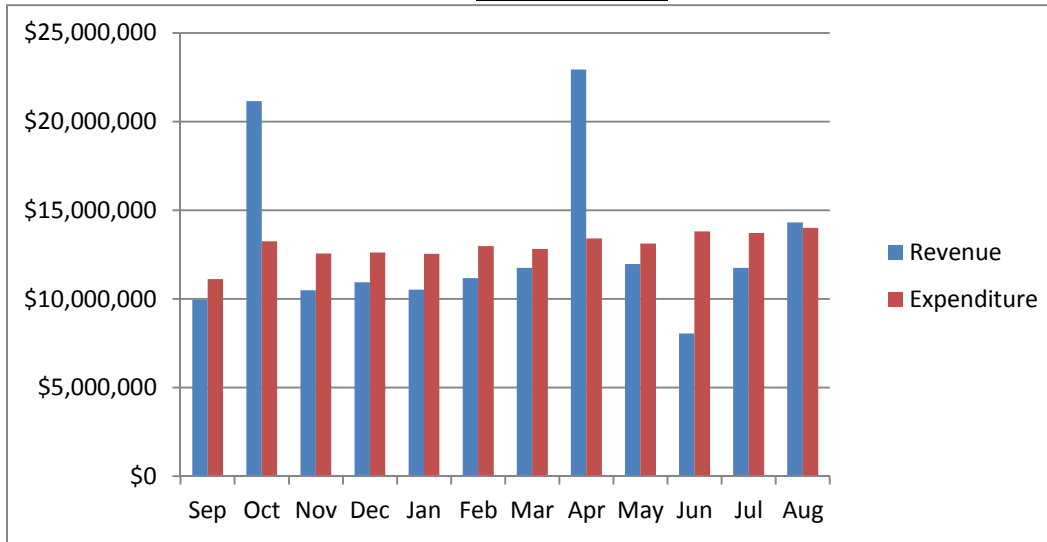
2016 - 17



2015 - 16



2014 - 15



**Auburn School District No. 408**  
**General Fund Budget Status**  
**For the Month of January, 2017**

	Annual Budget	Actual For Month	Total For Year	Encumbrance	Balance	Percent
TOTAL BEGINNING FUND BALANCE	\$ 14,000,000		14,186,101			
REVENUES AND OTHER FINANCING SOURCES						
1000 Local Taxes	39,373,979	78,746	18,090,014		21,283,965	45.94%
2000 Local Non-Tax	7,886,184	435,975	2,122,298		5,763,886	26.91%
3000 State, General Purpose	111,001,307	9,664,355	45,294,021		65,707,286	40.80%
4000 State, Special Purpose	26,653,428	2,529,652	10,986,482		15,666,946	41.22%
5000 Federal, General Purpose	26,383	-	-		26,383	0.00%
6000 Federal, Special Purpose	16,606,776	952,678	4,724,714		11,882,062	28.45%
7000 Revenues from Other District	525,000	-	286,814		238,186	54.63%
8000 Revenues from Other Agencies	102,700	441	7,490		95,210	7.29%
9000 Other Financing Sources	-	-	1,249		(1,249)	0.00%
Total Revenues & Other Finance Sources	202,175,757	13,661,847	81,513,081	-	120,662,676	40.32%
EXPENDITURES						
00 Regular Instruction	119,081,037	9,733,042	46,224,317	59,135,139	13,721,581	88.48%
10 Federal Stimulus	300,641	20,654	48,959	34,415	217,267	27.73%
20 Special Ed Instruction	25,460,957	1,942,697	9,797,314	13,460,653	2,202,990	91.35%
30 Vocational Instruction	6,837,979	547,068	2,725,627	3,620,605	491,747	92.81%
50&60 Compensatory Education	15,281,919	1,023,024	5,107,772	6,562,062	3,612,085	76.36%
70 Other Instructional Pgms	3,614,486	74,453	339,288	359,119	2,916,079	19.32%
80 Community Services	1,481,989	97,265	395,105	324,414	762,470	48.55%
90 Support Services	37,669,195	2,654,546	13,568,901	16,579,629	7,520,664	80.03%
Total Expenditures	209,728,203	16,092,747	78,207,284	100,076,036	31,444,883	85.01%
Excess Revenues/Other Financing Sources						
Over (under) Expend & Oth Financing Uses	(7,552,446)	(2,430,900)	3,305,797			
Total Ending Fund Balance	\$ 6,447,554		17,491,898			
Ending Fund Balance Accounts						
GL 821 Restricted for Carryovers			389,618			
GL 828 Restricted for Food Services	-		2,533,213			
GL 840 Nonspendable Fund Bal - Inv	-		395,350			
GL 875 Unrsrvd Dsgntd-Conting	-		300,000			
GL 888 Assigned to Other Purposes	-		1,800,000			
GL 890 UnRsrvd Undsgntd Fnd Bal	6,447,554		12,073,717			
Total Ending Fund Balance	\$ 6,447,554		\$ 17,491,898			
Fund Balance % of Expenditures	3%		22%			

**Auburn School District No. 408**  
**Capital Projects Fund Budget Status**  
**For the Month of January, 2017**

	Annual Budget	Actual For Month	Total For Year	Encumbrance	Balance	Percent
TOTAL BEGINNING FUND BALANCE	\$ 34,500,000		\$ 43,337,295			
REVENUES AND OTHER FINANCING SOURCES						
1000 Local Taxes	3,634,042	8,809	1,712,229		1,921,813	47.12%
2000 Local Non-Tax	3,025,200	1,146,998	2,277,692		747,508	75.29%
3000 State, General Purpose	-	-	-		-	0.00%
4000 State, Special Purpose	10,000,000	-	-		10,000,000	0.00%
5000 Federal, General Purpose	-	-	-		-	0.00%
6000 Federal, Special Purpose	-	-	-		-	0.00%
7000 Revenues from Other District	-	-	-		-	0.00%
8000 Revenues from Other Agencies	-	-	-		-	0.00%
9000 Other Financing Sources	-	95,555,511	95,555,511		(95,555,511)	0.00%
Total Revenues & Other Financing Sources	16,659,242	96,711,318	99,545,431	-	(82,886,189)	597.54%
EXPENDITURES						
10 Sites	24,200,000	120	212	-	24,199,789	0.00%
20 Buildings	3,260,488	272,842	1,064,221	717,043	1,479,224	54.63%
30 Equipment	5,000,000	386,588	549,691	569,036	3,881,273	22.37%
40 Energy	-	8,992	133,869	-	(133,869)	0.00%
50 Sales & Lease Expenditures	-	-	-	-	-	0.00%
60 Bond Issuance Expenditures	459,512	339,506	339,506	-	120,006	73.88%
90 Debt	-	-	-	-	-	0.00%
Total Expenditures	32,920,000	1,008,048	2,087,499	1,286,080	29,546,422	10.25%
Excess Revenues/Other Financing Sources Over (under) Expend. & Oth Financing Uses	(16,260,758)	95,703,270	97,457,933			
Total Ending Fund Balance	\$ 18,239,242		\$ 140,795,227			
Ending Fund Balance Accounts						
GL 861 Restricted from Bond Proceeds	7,204,852		6,240,314			
GL 862 Restricted from Levy Proceeds	(1,770,778)		6,888,608			
GL 863 Restricted from State Proceeds	8,239,242		21,835,336			
GL 865 Restricted from Other Proceeds	(24,586,150)		-			
GL 866 Restricted from Impact Fees	2,891,318		392,672			
GL 889 Assigned to Fund Purpose	10,000,000		105,438,296			
GL 890 UnRsrvd Undsgntd Fnd Bal	16,260,758					
Total Ending Fund Balance	\$ 18,239,242		\$ 140,795,227			

**Auburn School District No. 408**  
**ASB Fund Budget Status**  
**For the Month of January, 2017**

	Annual Budget	Actual For Month	Total for Year	Encumb	Balance	Percent
TOTAL BEGINNING FUND BALANCE	\$ 1,032,671		\$ 1,450,714			
REVENUES AND OTHER FINANCING SOURCES						
1000 General Student Body	1,824,512	37,484	458,079		1,366,433	25.11%
2000 Athletics	278,570	28,315	131,336		147,234	47.15%
3000 Classes	254,250	510	43,531		210,719	17.12%
4000 Clubs	2,214,885	84,022	533,611		1,681,274	24.09%
6000 Private Moneys	134,000	566	11,877		122,123	8.86%
Total Revenues & Other Financing Sources	4,706,217	150,896	1,178,433	-	3,527,784	25.04%
EXPENDITURES						
1000 General Student Body	1,489,805	26,695	230,267	72,002	1,187,537	20.29%
2000 Athletics	405,543	21,904	115,723	50,912	238,908	41.09%
3000 Classes	266,165	2,056	26,614	12,138	227,413	14.56%
4000 Clubs	2,402,134	71,961	392,719	175,593	1,833,822	23.66%
6000 Private Moneys	134,100	628	5,847	-	128,253	4.36%
Total Expenditures	4,697,747	123,243	771,170	310,645	3,615,932	23.03%
Excess Revenues/Other Financing Sources Over (under) Expend. & Oth Financing Uses	8,470	27,653	407,263			
Total Ending Fund Balance	\$ 1,041,141		\$ 1,857,977			
Ending Fund Balance Accounts						
GL 819 Restricted for Fund Purpose	1,041,141		1,857,726			
GL840 Nonspendable-Inven/Prepaid			251			
GL 889 Assigned to Fund Purposes						
Total Ending Fund Balance	\$ 1,041,141		\$ 1,857,977			

**Auburn School District No. 408**  
**Debt Service Fund Budget Status**  
**For the Month of January, 2017**

	Annual Budget	Actual For Month	Total Year	Encumbrance	Balance	Percent
TOTAL BEGINNING FUND BALANCE	\$ 7,745,000		\$ 7,844,352			
REVENUES AND OTHER FINANCING SOURCES						
1000 Local Taxes	16,545,121	32,661	7,444,735		9,100,386	45.00%
2000 Local Non-Tax	40,000	1,053	24,452		15,548	61.13%
3000 State, General Purpose		-	-		-	0.00%
5000 Federal, General Purpose		-	-		-	0.00%
6000 Federal, Special Purpose		-	-		-	0.00%
9000 Other Financing Sources		1,237	1,237		(1,237)	0.00%
Total Revenues & Other Financing Sources	16,585,121	34,951	7,470,424		9,114,697	45.04%
EXPENDITURES						
Matured Bond Expenditures	10,635,000	-	10,635,000	-	-	100.00%
Interest on Bonds	6,221,363	-	3,217,744	-	3,003,619	51.72%
Interfund Loan Interest	-	-	-	-	-	0.00%
Bond Transfer Fees	500	-	-	-	500	0.00%
Arbitrage Rebate	-	-	-	-	-	0.00%
Underwriter's fees	-	-	-	-	-	0.00%
Total Expenditures	16,856,863	-	13,852,744	-	3,004,119	82.18%
Other Financing Uses		-	-			
Excess Revenues/Other Financing Sources Over (under) Expend. & Oth Financing Uses	(271,742)	34,951	(6,382,320)			
Total Ending Fund Balance	\$ 7,473,258		\$ 1,462,032			
Ending Fund Balance Accounts						
GL 810 Reserved For Other Items			-			
GL 830 Reserved For Debt Service	7,745,000		1,655,164			
GL 889 Assigned to Fund Purposes	(271,742)		(193,132)			
GL 890 UnRsrvd Undsgntd Fnd Bal						
Total Ending Fund Balance	\$ 7,473,258		\$ 1,462,032			

**Auburn School District No. 408**  
**Transportation Vehicle Fund Budget Status**  
**For the Month of January, 2017**

	Annual Budget	Actual For Month	Total For Year	Encumb	Balance	Percent
TOTAL BEGINNING FUND BALANCE	\$ 1,109,088		\$ 2,991,760			
REVENUES AND OTHER FINANCING SOURCES						
1000 Local Taxes	-	-	-		-	0.00%
2000 Local Non-Tax	11,200	1,427	7,250		3,950	64.74%
3000 State, General Purpose	0	-	-		-	0.00%
4000 State, Special Purpose	741,597	-	-		741,597	0.00%
5000 Federal, General Purpose	-	-	-		-	0.00%
8000 Revenues from Other Agencies	-	-	-		-	0.00%
9000 Others Financing Sources	-	-	111,408		(111,408)	0.00%
Total Revenues & Other Financing Sources	752,797	1,427	118,659	-	634,138	15.76%
EXPENDITURES						
Type 30 Equipment	2,260,000	141,761	1,346,075	-	913,925	59.56%
Total Expenditures	2,260,000	141,761	1,346,075	-	913,925	59.56%
Excess Revenues/Other Financing Sources Over (under) Expend & Oth Financing Uses	(1,507,203)	(140,334)	(1,227,416)			
Total Ending Fund Balance	\$ (398,115)		\$ 1,764,343			
Ending Fund Balance Accounts						
GL 819 Restricted for Fund Purposes	1,109,088		2,991,760			
GL 889 Assigned to Special Fund Purposes	152,797		(1,227,416)			
GL 890 UnRsrvd Undsgntd Fnd Bal			-			
Total Ending Fund Balance	\$ 1,261,885		\$ 1,764,343			



**AUBURN SCHOOL DISTRICT No. 408**

**ASB FUND**

**JANUARY, 2017**

**HIGH SCHOOLS**

	<b>Auburn High</b>	<b>Auburn Mountainview</b>	<b>Auburn Riverside</b>	<b>West Auburn</b>	<b>TOTAL</b>
	401	405	408	504	
<b>BEGINNING BALANCE</b>	<b>\$ 192,448.20</b>	<b>\$ 288,256.12</b>	<b>\$ 353,697.83</b>	<b>\$ 7,942.23</b>	<b>\$ 842,344.38</b>
<b>REVENUES</b>	<b>\$ 313,443.63</b>	<b>\$ 264,272.76</b>	<b>\$ 312,980.29</b>	<b>\$ 916.80</b>	<b>\$ 891,613.48</b>
<b>EXPENDITURES</b>					
General	\$ 31,834.36	\$ 61,685.50	\$ 29,623.36	\$ 270.90	\$ 123,414.12
Athletics	35,740.15	25,413.79	47,590.15	-	108,744.09
Classes	5,405.57	6,950.86	7,066.71	-	19,423.14
Clubs	126,026.22	97,698.58	117,681.75	-	341,406.55
Private Monies	1,318.94	2,261.62	-	-	3,580.56
<b>TOTAL EXPENDITURES</b>	<b>\$ 200,325.24</b>	<b>\$ 194,010.35</b>	<b>\$ 201,961.97</b>	<b>\$ 270.90</b>	<b>\$ 596,568.46</b>
<b>TRANSFERS</b>					
General	\$ 42,269.00	\$ 21,194.59	\$ 31,000.00	\$ -	\$ 94,463.59
Athletics	(20,735.00)	(13,046.25)	(12,058.92)	-	(45,840.17)
Classes	170.00	(135.00)	(6,500.00)	-	(6,465.00)
Clubs	(21,604.00)	(8,013.34)	(12,441.08)	-	(42,058.42)
Private Monies	(100.00)	-	-	-	(100.00)
<b>TOTAL TRANSFERS</b>	<b>\$ -</b>	<b>\$ -</b>	<b>\$ -</b>	<b>\$ -</b>	<b>\$ -</b>
<b>OVER/ (UNDER)</b>	<b>\$ 113,118.39</b>	<b>\$ 70,262.41</b>	<b>\$ 111,018.32</b>	<b>\$ 645.90</b>	<b>\$ 295,045.02</b>
<b>ENDING BALANCE</b>	<b>\$ 305,566.59</b>	<b>\$ 358,518.53</b>	<b>\$ 464,716.15</b>	<b>\$ 8,588.13</b>	<b>\$ 1,137,389.40</b>

**AUBURN SCHOOL DISTRICT No. 408**

**ASB FUND**

**JANUARY, 2017**

**MIDDLE SCHOOLS**

	Cascade	Mt. Baker	Rainier	Olympic	TOTAL
	202	207	206	203	
<b>BEGINNING BALANCE</b>	<b>\$ 72,323.90</b>	<b>\$ 68,999.99</b>	<b>\$ 109,505.87</b>	<b>\$ 102,959.00</b>	<b>\$ 353,788.76</b>
<b>REVENUES</b>	<b>\$ 40,781.64</b>	<b>\$ 53,625.94</b>	<b>\$ 56,518.31</b>	<b>\$ 21,088.85</b>	<b>\$ 172,014.74</b>
<b>EXPENDITURES</b>					
General	\$ 6,641.41	\$ 7,994.55	\$ 14,926.82	\$ 7,163.33	\$ 36,726.11
Athletics	1,324.39	1,697.66	71.20	3,886.11	6,979.36
Classes	-	111.59	777.54	-	889.13
Clubs	15,768.46	16,981.56	15,678.07	2,884.08	51,312.17
Private Monies	941.65	1,325.17	-	-	2,266.82
<b>TOTAL EXPENDITURES</b>	<b>\$ 24,675.91</b>	<b>\$ 28,110.53</b>	<b>\$ 31,453.63</b>	<b>\$ 13,933.52</b>	<b>\$ 98,173.59</b>
<b>TRANSFERS</b>					
General	\$ 5,350.00	\$ 14,835.00	\$ 2,234.36	\$ 345.66	\$ 22,765.02
Athletics	(1,000.00)	(7,260.00)	(200.00)	(245.66)	(8,705.66)
Classes	-	(2,500.00)	(2,000.00)	-	(4,500.00)
Clubs	(4,350.00)	(5,075.00)	(34.36)	(100.00)	(9,559.36)
Private Monies	-	-	-	-	-
<b>TOTAL TRANSFERS</b>	<b>\$ -</b>	<b>\$ -</b>	<b>\$ 0.00</b>	<b>\$ 0.00</b>	<b>\$ -</b>
<b>OVER/ (UNDER)</b>	<b>\$ 16,105.73</b>	<b>\$ 25,515.41</b>	<b>\$ 25,064.68</b>	<b>\$ 7,155.33</b>	<b>\$ 73,841.15</b>
<b>ENDING BALANCE</b>	<b>\$ 88,429.63</b>	<b>\$ 94,515.40</b>	<b>\$ 134,570.55</b>	<b>\$ 110,114.33</b>	<b>\$ 427,629.91</b>

**AUBURN SCHOOL DISTRICT NO. 408**  
**PRIVATE PURPOSE TRUST FUND STATEMENT**  
**January 31, 2017**

**REVENUES:**

InvestED		785
Scholarship Donations:		
6007 Pat Kuhlman	1,000	
6024 Rotary	1,473	
6067 ARHS English SC	500	
6076 Hirose Memorial	300	
6089 Watt Memorial	125	
6100 AMHS Drama	270	
6103 Linda Cowan	100	
6126 Bob Jones Serv	5,191	
6415 Bill Profit	312	
6501 Invest Ed- AHS	500	
6502 Invest Ed - Casc	37	
6505 Invest Ed - AMHS	137	
6520 Invest Ed - RAI	37	
6527 Invest Ed - MTB	37	
6528 Invest Ed - ARHS	37	
7003 Pioneer Shoe Fund	2,192	
7004 ARHS Win Wishes	6,472	
7005 AHS Booster Club	6,860	
7006 Native Am Students	60	
Total Scholarship Donations		25,640
Interest		1,840
Total Revenues		<u>27,480</u>

**EXPENDITURES:**

InvestED	7,668
6038 ARHS Masonic	-500
6080 Jill Wilson	-2,500
6083 Juan Huseby	-1,000
6204 Auburn Noon Lions	-500
6501 Invest Ed- AHS	4,004
6502 Invest Ed - Casc	220
6505 Invest Ed - AMHS	2,139
6520 Invest Ed - RAI	132
6527 Invest Ed - MTB	321
6528 Invest Ed - ARHS	852
7004 ARHS Win Wishes	4,508
7005 AHS Booster Club	3,065
7006 Native Am Students	15,616
7009 Chinook Shoe Fund	253
Total Expenditures	<u>26,610.50</u>
Excess of Revenue over (under) Expenditure	869
Fund Balance - Beginning of the Year	<u>582,027</u>
Fund Balance - Year to Date	<u>\$ 582,896</u>

**AUBURN SCHOOL DISTRICT NO 408**  
**NBN Employee Benefits Trust Fund Statement**  
**January 31, 2017**

**ADDITIONS:**

Contributions from Plan Members	\$ 117,684.00
Investment Earnings	<u>388.60</u>
Total Additions	<u>118,072.60</u>

**DEDUCTIONS:**

Benefits Claims	106,652.22
State Program Fees	<u>350.00</u>
Total Deductions	<u>107,002.22</u>

<b>NET DEDUCTIONS</b>	11,070.38
-----------------------	-----------

Net Assets at Beginning of Year	<u>156,079.43</u>
---------------------------------	-------------------

Net Assets Year To Date	<u><u>\$ 167,149.81</u></u>
-------------------------	-----------------------------

**AUBURN SCHOOL DISTRICT NO. 408**  
**Local Grants Received in January, 2017**

Donor	Recipient	Amount
Coca Cola Rebate	Alpac	\$17.10
Dorian Studios	Alpac	\$53.61
Box Tops	Evergreen	\$39.22
Box Tops	Chinook	\$748.90
PTA Donations	Chinook	\$806.01
Dorian Studios	Lake View	\$35.45
Walmart	Gildo Rey	\$250.00
Dorian Studios	Lea Hill	\$60.50
Box Tops	Pioneer	\$500.00
PTA Donations	Dick Scobee	\$1,000.00
Kula	Terminal Park	\$26.86
USAgain	Terminal Park	\$20.67
Dorian Studios	Terminal Park	\$41.60
Box Tops	Hazelwood	\$39.50
Vista Vending	Hazelwood	\$22.78
Custom LLC	Hazelwood	\$830.10
USAgain	Hazelwood	\$83.02
Custom LLC	Hazelwood	\$15.74
Dorian Studios	Lakeland Hills	\$29.19
Dorian Studios	Arthur Jacobsen	\$15.70
Kenwood Rebate	Arthur Jacobsen	\$180.00
PTSA Grant - Security and Surveillance	Cascade	\$1,500.00
Anonymous	Rainier	\$78.86
Katy Nelson	AHS	\$9.96
Target	West Auburn	\$700.00
Rotary Club	West Auburn	\$2,000.00
Auburn Arts Commission Project Support Grant	Auburn Riverside	\$441.43
Total		<u><u>\$9,546.20</u></u>

## 10--General Fund-- FUND BALANCE -- AGENCY ACCOUNTS -- Revised -- BUDGET-STATUS-REPORT

Fiscal Year 2016 (September 1, 2016 - August 31, 2017)

For the AUBURN SCHOOL DISTRICT NO. 408 School District for the Month of January, 2017

	ANNUAL BUDGET	ACTUAL FOR MONTH	ACTUAL FOR YEAR	ENCUMBRANCES	BALANCE	PERCENT
<u>A. REVENUES/OTHER FIN. SOURCES</u>						
1000 LOCAL TAXES	39,373,979	78,745.75	18,090,014.04		21,283,964.96	45.94
2000 LOCAL SUPPORT NONTAX	7,886,184	435,975.33	2,122,297.63		5,763,886.37	26.91
3000 STATE, GENERAL PURPOSE	111,001,307	9,664,354.72	45,294,020.52		65,707,286.48	40.80
4000 STATE, SPECIAL PURPOSE	26,653,428	2,529,651.89	10,986,481.70		15,666,946.30	41.22
5000 FEDERAL, GENERAL PURPOSE	26,383	.00	.00		26,383.00	0.00
6000 FEDERAL, SPECIAL PURPOSE	16,606,776	952,677.89	4,724,713.61		11,882,062.39	28.45
7000 REVENUES FR OTH SCH DIST	525,000	.00	286,814.37		238,185.63	54.63
8000 OTHER AGENCIES AND ASSOCIATES	102,700	441.43	7,490.43		95,209.57	7.29
9000 OTHER FINANCING SOURCES	0	.00	1,248.98		1,248.98-	0.00
 <u>Total REVENUES/OTHER FIN. SOURCES</u>	 202,175,757	 13,661,847.01	 81,513,081.28		 120,662,675.72	 40.32
 <u>B. EXPENDITURES</u>						
00 Regular Instruction	119,081,037	9,733,041.67	46,224,317.06	59,135,138.79	13,721,581.15	88.48
10 Federal Stimulus	300,641	20,653.86	48,958.82	34,415.23	217,266.95	27.73
20 Special Ed Instruction	25,460,957	1,942,697.22	9,797,314.25	13,460,652.82	2,202,989.93	91.35
30 Voc. Ed Instruction	6,837,979	547,067.52	2,725,626.89	3,620,604.83	491,747.28	92.81
40 Skills Center Instruction	0	.00	.00	0.00	.00	0.00
50+60 Compensatory Ed Instruct.	15,281,919	1,023,023.65	5,107,771.78	6,562,062.38	3,612,084.84	76.36
70 Other Instructional Pgms	3,614,486	74,452.59	339,288.29	359,118.61	2,916,079.10	19.32
80 Community Services	1,481,989	97,265.16	395,105.33	324,413.93	762,469.74	48.55
90 Support Services	37,669,195	2,654,545.62	13,568,901.42	16,579,629.26	7,520,664.32	80.03
 <u>Total EXPENDITURES</u>	 209,728,203	 16,092,747.29	 78,207,283.84	 100,076,035.85	 31,444,883.31	 85.01
 <u>C. OTHER FIN. USES TRANS. OUT (GL 536)</u>	 0	 .00	 .00			
 <u>D. OTHER FINANCING USES (GL 535)</u>	 0	 .00	 .00			
 <u>E. EXCESS OF REVENUES/OTHER FIN.SOURCES</u>						
<u>OVER(UNDER)EXP/OTH FIN USES(A-B-C-D)</u>	7,552,446-	2,430,900.28-	3,305,797.44		10,858,243.44	143.77-
 <u>F. TOTAL BEGINNING FUND BALANCE</u>	 14,000,000		 14,186,101.05			
 <u>G. G/L 898 PRIOR YEAR ADJUSTMENTS(+OR-)</u>	 XXXXXXXXXX		 .00			
 <u>H. TOTAL ENDING FUND BALANCE</u>	 6,447,554		 17,491,898.49			
<u>(E+F + OR - G)</u>						

I. ENDING FUND BALANCE ACCOUNTS:

G/L 810 RESTRICTED FOR OTHER ITEMS	0	.00
G/L 815 RESTIC UNEQUALIZED DEDUCT REV	0	.00
G/L 821 RESTRICTED FOR CARRYOVER	0	389,617.53
G/L 825 RESTRICTED FOR SKILLS CENTER	0	.00
G/L 828 RESTRICTED FOR C/O OF FS REV	0	2,533,213.37
G/L 830 RESTRICTED FOR DEBT SERVICE	0	.00
G/L 835 RESTRICTD FOR ARBITAGE REBATE	0	.00
G/L 840 NONSPND FB - INVENT/PREPD ITMS	0	395,350.20
G/L 845 RESTRICTED FOR SELF-INSURANCE	0	.00
G/L 850 RESTRICTED FOR UNINSURED RISKS	0	.00
G/L 870 COMMITTED TO OTHER PURPOSES	0	.00
G/L 872 COMMITTED TO MIN FND BAL POLICY	0	.00
G/L 875 ASSIGNED CONTINGENCIES	0	300,000.00
G/L 884 ASSIGNED TO OTHER CAP PROJECTS	0	.00
G/L 888 ASSIGNED TO OTHER PURPOSES	0	1,800,000.00
G/L 890 UNASSIGNED FUND BALANCE	6,447,554	12,073,717.39
G/L 891 UNASSIGNED MIN FND BAL POLICY	0	.00
 <u>TOTAL</u>	 6,447,554	 17,491,898.49

## 20--Capital Projects-- FUND BALANCE -- AGENCY ACCOUNTS -- Revised -- BUDGET-STATUS-REPORT

Fiscal Year 2016 (September 1, 2016 - August 31, 2017)

For the AUBURN SCHOOL DISTRICT NO. 408 School District for the Month of January, 2017

	ANNUAL BUDGET	ACTUAL FOR MONTH	ACTUAL FOR YEAR	ENCUMBRANCES	BALANCE	PERCENT
<u>A. REVENUES/OTHER FIN. SOURCES</u>						
1000 Local Taxes	3,634,042	8,808.90	1,712,228.51		1,921,813.49	47.12
2000 Local Support Nontax	3,025,200	1,146,998.21	2,277,691.95		747,508.05	75.29
3000 State, General Purpose	0	.00	.00		.00	0.00
4000 State, Special Purpose	10,000,000	.00	.00		10,000,000.00	0.00
5000 Federal, General Purpose	0	.00	.00		.00	0.00
6000 Federal, Special Purpose	0	.00	.00		.00	0.00
7000 Revenues Fr Oth Sch Dist	0	.00	.00		.00	0.00
8000 Other Agencies and Associates	0	.00	.00		.00	0.00
9000 Other Financing Sources	0	95,555,510.77	95,555,510.77		95,555,510.77-	0.00
 <u>Total REVENUES/OTHER FIN. SOURCES</u>	 16,659,242	 96,711,317.88	 99,545,431.23		 82,886,189.23-	 597.54
 <u>B. EXPENDITURES</u>						
10 Sites	24,200,000	120.00	211.50	0.00	24,199,788.50	0.00
20 Buildings	3,260,488	272,841.55	1,064,220.70	717,043.43	1,479,223.87	54.63
30 Equipment	5,000,000	386,587.90	549,690.73	569,036.27	3,881,273.00	22.37
40 Energy	0	8,992.07	133,869.46	0.00	133,869.46-	0.00
50 Sales & Lease Expenditure	0	.00	.00	0.00	.00	0.00
60 Bond Issuance Expenditure	459,512	339,506.25	339,506.25	0.00	120,005.75	73.88
90 Debt	0	.00	.00	0.00	.00	0.00
 <u>Total EXPENDITURES</u>	 32,920,000	 1,008,047.77	 2,087,498.64	 1,286,079.70	 29,546,421.66	 10.25
 <u>C. OTHER FIN. USES TRANS. OUT (GL 536)</u>	 0	 .00	 .00			
 <u>D. OTHER FINANCING USES (GL 535)</u>	 0	 .00	 .00			
 <u>E. EXCESS OF REVENUES/OTHER FIN. SOURCES OVER (UNDER) EXP/OTH FIN USES (A-B-C-D)</u>	 16,260,758-	 95,703,270.11	 97,457,932.59		 113,718,690.59	 699.34-
 <u>F. TOTAL BEGINNING FUND BALANCE</u>	 34,500,000		 43,337,294.60			
 <u>G. G/L 898 PRIOR YEAR ADJUSTMENTS (+OR-)</u>	 XXXXXXXXXX		 .00			
 <u>H. TOTAL ENDING FUND BALANCE (E+F + OR - G)</u>	 18,239,242		 140,795,227.19			



I. ENDING FUND BALANCE ACCOUNTS:

G/L 810 RESTRICTED FOR OTHER ITEMS	0	.00
G/L 825 RESTRICTED FOR SKILLS CENTER	0	.00
G/L 830 RESTRICTED FOR DEBT SERVICE	0	.00
G/L 835 RESTRICTED FOR ARBITRAGE REBAT	0	.00
G/L 840 NONSPND FB - INVENT/PREPD ITMS	0	.00
G/L 850 RESTRICTED FOR UNINSURED RISKS	0	.00
G/L 861 RESTRICTED FROM BOND PROCEEDS	7,220,336	6,240,314.41
G/L 862 COMMITTED FROM LEVY PROCEEDS	1,786,262~	6,888,608.20
G/L 863 RESTRICTED FROM STATE PROCEEDS	8,239,242	21,835,336.48
G/L 864 RESTRICTED FROM FEDERAL PROCEED	0	.00
G/L 865 RESTRICTED FROM OTHER PROCEEDS	24,586,150~	.00
G/L 866 RESTRICTED FROM IMPACT FEE PROC	2,891,318	392,672.10
G/L 867 RESTRICTED FROM MITIGATION FEES	0	.00
G/L 869 RESTRICTED FROM UNDISTRIB PROCE	0	.00
G/L 870 COMMITTED TO OTHER PURPOSES	0	.00
G/L 889 ASSIGNED TO FUND PURPOSES	10,000,000	105,438,296.00
G/L 890 UNASSIGNED FUND BALANCE	16,260,758	.00
<u>TOTAL</u>	18,239,242	140,795,227.19

## 30--Debt Service Fund-- FUND BALANCE -- AGENCY ACCOUNTS -- Revised -- BUDGET-STATUS-REPORT

Fiscal Year 2016 (September 1, 2016 - August 31, 2017)

For the AUBURN SCHOOL DISTRICT NO. 408 School District for the Month of January, 2017

	ANNUAL BUDGET	ACTUAL FOR MONTH	ACTUAL FOR YEAR	ENCUMBRANCES	BALANCE	PERCENT
<u>A. REVENUES/OTHER FIN. SOURCES</u>						
1000 Local Taxes	16,545,121	32,661.05	7,444,735.04		9,100,385.96	45.00
2000 Local Support Nontax	40,000	1,052.77	24,451.74		15,548.26	61.13
3000 State, General Purpose	0	.00	.00		.00	0.00
5000 Federal, General Purpose	0	.00	.00		.00	0.00
9000 Other Financing Sources	0	1,237.13	1,237.13		1,237.13-	0.00
<u>Total REVENUES/OTHER FIN. SOURCES</u>	16,585,121	34,950.95	7,470,423.91		9,114,697.09	45.04
<u>B. EXPENDITURES</u>						
Matured Bond Expenditures	10,635,000	.00	10,635,000.00	0.00	.00	100.00
Interest On Bonds	6,221,363	.00	3,217,743.75	0.00	3,003,619.25	51.72
Interfund Loan Interest	0	.00	.00	0.00	.00	0.00
Bond Transfer Fees	500	.00	.00	0.00	500.00	0.00
Arbitrage Rebate	0	.00	.00	0.00	.00	0.00
Underwriter's Fees	0	.00	.00	0.00	.00	0.00
<u>Total EXPENDITURES</u>	16,856,863	.00	13,852,743.75	0.00	3,004,119.25	82.18
<u>C. OTHER FIN. USES TRANS. OUT (GL 536)</u>	0	.00	.00			
<u>D. OTHER FINANCING USES (GL 535)</u>	0	.00	.00			
<u>E. EXCESS OF REVENUES/OTHER FIN. SOURCES</u>						
<u>OVER (UNDER) EXPENDITURES (A-B-C-D)</u>	271,742-	34,950.95	6,382,319.84-		6,110,577.84-	> 1000
<u>F. TOTAL BEGINNING FUND BALANCE</u>	7,745,000		7,844,352.16			
<u>G. G/L 898 PRIOR YEAR ADJUSTMENTS (+OR-)</u>	XXXXXXXXX		.00			
<u>H. TOTAL ENDING FUND BALANCE</u>	7,473,258		1,462,032.32			
<u>(E+F + OR - G)</u>						

I. ENDING FUND BALANCE ACCOUNTS:

G/L 810 RESTRICTED FOR OTHER ITEMS	0	.00
G/L 830 RESTRICTED FOR DEBT SERVICE	7,745,000	1,655,163.87
G/L 835 RESTRICTD FOR ARBITRAGE REBATE	0	.00
G/L 870 COMMITTED TO OTHER PURPOSES	0	.00
G/L 889 ASSIGNED TO FUND PURPOSES	271,742-	193,131.55-
G/L 890 UNASSIGNED FUND BALANCE	0	.00
 <u>TOTAL</u>	 7,473,258	 1,462,032.32

## 40--ASB Fund-- FUND BALANCE -- AGENCY ACCOUNTS -- Revised -- BUDGET-STATUS-REPORT

Fiscal Year 2016 (September 1, 2016 - August 31, 2017)

For the AUBURN SCHOOL DISTRICT NO. 408 School District for the Month of January, 2017

	ANNUAL BUDGET	ACTUAL FOR MONTH	ACTUAL FOR YEAR	ENCUMBRANCES	BALANCE	PERCENT
<u>A. REVENUES</u>						
1000 General Student Body	1,824,512	37,483.88	458,078.68		1,366,433.32	25.11
2000 Athletics	278,570	28,314.53	131,335.94		147,234.06	47.15
3000 Classes	254,250	509.51	43,530.53		210,719.47	17.12
4000 Clubs	2,214,885	84,021.76	533,610.52		1,681,274.48	24.09
6000 Private Moneys	134,000	566.17	11,877.27		122,122.73	8.86
<u>Total REVENUES</u>	4,706,217	150,895.85	1,178,432.94		3,527,784.06	25.04
<u>B. EXPENDITURES</u>						
1000 General Student Body	1,489,805	26,694.55	230,266.65	72,001.55	1,187,536.80	20.29
2000 Athletics	405,543	21,904.05	115,723.45	50,911.69	238,907.86	41.09
3000 Classes	266,165	2,055.60	26,614.04	12,138.40	227,412.56	14.56
4000 Clubs	2,402,134	71,960.54	392,718.72	175,593.13	1,833,822.15	23.66
6000 Private Moneys	134,100	627.92	5,847.38	0.00	128,252.62	4.36
<u>Total EXPENDITURES</u>	4,697,747	123,242.66	771,170.24	310,644.77	3,615,931.99	23.03
<u>C. EXCESS OF REVENUES</u>						
<u>OVER (UNDER) EXPENDITURES</u> (A-B)	8,470	27,653.19	407,262.70		398,792.70	> 1000
<u>D. TOTAL BEGINNING FUND BALANCE</u>	1,032,671		1,450,714.46			
<u>E. G/L 898 PRIOR YEAR ADJUSTMENTS (+OR-)</u>	XXXXXXXXXX		.00			
<u>F. TOTAL ENDING FUND BALANCE</u>	1,041,141		1,857,977.16			
<u>C+D + OR - E)</u>						

G. ENDING FUND BALANCE ACCOUNTS:

G/L 810 RESTRICTED FOR OTHER ITEMS	0	.00
G/L 819 RESTRICTED FOR FUND PURPOSES	1,041,141	1,857,725.87
G/L 840 NONSPND FB - INVENT/PREPD ITMS	0	251.29
G/L 850 RESTRICTED FOR UNINSURED RISKS	0	.00
G/L 870 COMMITTED TO OTHER PURPOSES	0	.00
G/L 889 ASSIGNED TO FUND PURPOSES	0	.00
G/L 890 UNASSIGNED FUND BALANCE	0	.00
 <u>TOTAL</u>	 1,041,141	 1,857,977.16

## 90--Transportation Vehicle Fund-- FUND BALANCE -- AGENCY ACCOUNTS -- Revised -- BUDGET-STATUS-REPORT

Fiscal Year 2016 (September 1, 2016 - August 31, 2017)

For the AUBURN SCHOOL DISTRICT NO. 408 School District for the Month of January, 2017

<u>A. REVENUES/OTHER FIN. SOURCES</u>	<u>ANNUAL BUDGET</u>	<u>ACTUAL FOR MONTH</u>	<u>ACTUAL FOR YEAR</u>	<u>ENCUMBRANCES</u>	<u>BALANCE</u>	<u>PERCENT</u>
1000 Local Taxes	0	.00	.00		.00	0.00
2000 Local Nontax	11,200	1,427.31	7,250.35		3,949.65	64.74
3000 State, General Purpose	0	.00	.00		.00	0.00
4000 State, Special Purpose	741,597	.00	.00		741,597.00	0.00
5000 Federal, General Purpose	0	.00	.00		.00	0.00
8000 Other Agencies and Associates	0	.00	.00		.00	0.00
9000 Other Financing Sources	0	.00	111,408.22		111,408.22-	0.00
<u>A. TOTAL REV/OTHER FIN.SRCS (LESS TRANS)</u>	<u>752,797</u>	<u>1,427.31</u>	<u>118,658.57</u>		<u>634,138.43</u>	<u>15.76</u>
 B. <u>9900 TRANSFERS IN FROM GF</u>	 0	 .00	 .00		 .00	 0.00
 C. <u>Total REV./OTHER FIN. SOURCES</u>	 752,797	 1,427.31	 118,658.57		 634,138.43	 15.76
 D. <u>EXPENDITURES</u>						
Type 30 Equipment	2,260,000	.00	1,346,074.87	0.00	913,925.13	59.56
Type 60 Bond Levy Issuance	0	.00	.00	0.00	.00	0.00
Type 90 Debt	0	.00	.00	0.00	.00	0.00
 <u>Total EXPENDITURES</u>	 2,260,000	 .00	 1,346,074.87	 0.00	 913,925.13	 59.56
 E. <u>OTHER FIN. USES TRANS. OUT (GL 536)</u>	 0	 .00	 .00			
 F. <u>OTHER FINANCING USES (GL 535)</u>	 0	 .00	 .00			
 G. <u>EXCESS OF REVENUES/OTHER FIN. SOURCES</u> <u>OVER (UNDER) EXP/OTH FIN USES (C-D-E-F)</u>	 1,507,203-	 1,427.31	 1,227,416.30-		 279,786.70	 18.56-
 H. <u>TOTAL BEGINNING FUND BALANCE</u>	 1,109,088		 2,991,759.54			
 I. <u>G/L 898 PRIOR YEAR ADJUSTMENTS (+OR-)</u>	 XXXXXXXXXX		 .00			
 J. <u>TOTAL ENDING FUND BALANCE</u> <u>(G+H + OR - I)</u>	 398,115-		 1,764,343.24			

K. ENDING FUND BALANCE ACCOUNTS:

G/L 810 RESTRICTED FOR OTHER ITEMS	0	.00
G/L 819 RESTRICTED FOR FUND PURPOSES	1,109,088	2,991,759.54
G/L 830 RESTRICTED FOR DEBT SERVICE	0	.00
G/L 835 RESTRICTD FOR ARBITAGE REBATE	0	.00
G/L 850 RESTRICTED FOR UNINSURED RISKS	0	.00
G/L 889 ASSIGNED TO FUND PURPOSES	1,507,203-	1,227,416.30-
G/L 890 UNASSIGNED FUND BALANCE	0	.00
 <u>TOTAL</u>	 398,115-	 1,764,343.24

\*\*\*\*\* End of report \*\*\*\*\*



## 5. Discussion

AUBURN SCHOOL DISTRICT NO. 408 KING COUNTY, WASHINGTON

RESOLUTION NO. 1234

NAMING OF AUBURN HIGH SCHOOL GYMNASIUM IN HONOR OF BOB JONES

WHEREAS, the Board of Directors of the Auburn School District No. 408 is responsible for the naming of school and district facilities to ensure that all locations are named in an organized manner with nomenclature that represents geography or individuals significant to the community; and

WHEREAS, a group of citizens with ties to Auburn High School and the broader community has petitioned the board for the gymnasium at Auburn High School to be named for Robert Charles “Bob” Jones; and

WHEREAS, the movement to name the gymnasium for Bob Jones consists of more than one thousand people who have joined a social media campaign, more than one hundred individual letters written to the District and Board of Directors; and a diverse array of voices providing comment to the Board representing current and former students of Auburn High School, parents and staff members from across Auburn, and individuals from across the region who have been impacted by Bob Jones’ leadership; and

WHEREAS, Bob Jones served the students of Auburn for thirty-six (36) years, including twenty-two (22) years teaching science and health, twenty (20) years as a football coach, as well as coaching wrestling and boys soccer, and twenty-four (24) years as athletic director for Auburn High School; and

WHEREAS, Bob Jones’ impact reaches far beyond what can be measured by his years of service. His influence on generations of athletes as coach and athletic director has changed thousands of lives, his passion has spawned a coaching tree that extends to all three Auburn high schools and beyond, he has received recognition from the Washington Interscholastic Activities Association and is a member of the Washington Activities Coordinators Association Hall of Fame, and examples of his dedication, extra hours, and going above and beyond are too numerous to mention; and

WHEREAS, Bob Jones has participated in Relay for Life for twenty-one (21) years, raising \$1.6 million for the American Cancer Society, and inspired the Auburn community with his own fight, remaining at Auburn High School for more than three years while battling cancer; and

WHEREAS, the Board of Directors wishes to recognize Bob Jones for his extraordinary service to the students and community of Auburn, while also maintaining the highest criteria for facility naming, as only five current District facilities have been named for a person: Arthur Jacobsen Elementary, Dick Scobee Elementary, Gildo Rey Elementary, James P. Fugate Administrative Building, and Washington Elementary.

NOW, THEREFORE, BE IT RESOLVED, the Board of Directors of the Auburn School District No. 408 hereby dedicates the gymnasium at Auburn High School to be formally known as the Bob Jones Gymnasium. Further, the board resolves to revise Policy 6970, Naming Facilities and Memorials, to allow for the separate naming of portions of facilities and for the consideration of living individuals for facilities naming, both in exceptional circumstances.

Adopted at a regular open public meeting of the Board of Directors held on February 27, 2017, the following Directors being present and voting therefore:

AUBURN SCHOOL DISTRICT NO. 408

\_\_\_\_\_  
\_\_\_\_\_  
\_\_\_\_\_  
\_\_\_\_\_  
\_\_\_\_\_

\_\_\_\_\_  
Secretary, Board of Directors