

AGENDA FOR BOARD OF DIRECTORS
AUBURN SCHOOL DISTRICT NO. 408
Tuesday, March 28, 2017

- I. TIME AND PLACE
 - 1. 7 p.m. at the James P. Fugate Administration Building
- II. ROLL CALL
 - 1. Roll call of board members
- III. PLEDGE OF ALLEGIANCE
- IV. AUDIENCE PARTICIPATION
 - 1. Written communications
 - 2. Scheduled communications
 - 3. Unscheduled communications
 - 4. Community groups and organizations
- V. LEGISLATIVE UPDATE
- VI. STUDENT AND STAFF RECOGNITION
 - 1. Recognition of student
 - 2. Recognition of staff
- VII. STUDENT PARTICIPATION
 - 1. Auburn Riverside High School Booster Club program
 - 2. Activity/athletic report
 - 3. Requests for travel
- VIII. SCHOOL PROGRAMS AND STUDENT ACHIEVEMENT
 - 1. 2016-17 Auburn Riverside High School PLC presentation
 - 2. Communities In Schools report
 - 3. 2013-16 District Strategic Plan progress report
- IX. PERSONNEL
 - 1. Certificated and classified personnel report
 - 2. Requests for travel
- X. BUILDING PROGRAM
 - 1. Resolution No. 1235
 - 2. Authorization of award of the GC/CM contract

XI. FINANCE

1. Vouchers
2. Authorization to call for bids
3. Financial statements

XII. DIRECTORS

1. Approval of minutes
2. Second reading of revised policy
3. Discussion

LEGISLATIVE UPDATE

The board will discuss legislative items.

STUDENT AND STAFF RECOGNITION

1. Recognition of Student

The Auburn School District Board of Directors will recognize Riel Benjamin, an eighth grade student at Rainier Middle School, for being an outstanding student.

Riel is being recognized for the significant growth he has made since 6th grade. He has worked hard and developed strong, positive leadership skills. His teachers say he is a positive influence on his peers, is self-motivated, and focused.

Riel believes in teamwork, both at school and on the court. His favorite subjects are P.E. and history. He especially enjoys Mr. Furth as a teacher.

Riel is active in basketball at school and with AAU. When not playing basketball, he spends his free time with friends, playing X-box and participating in church activities.

In the future, he would like to play basketball at UCLA, but he is undecided on his major.

His favorite basketball team is the Cleveland Cavaliers and he admires LeBron James. He loves pepperoni pizza and traveling to the Tri-Cities.

Riel is looking forward to high school at Auburn Mountainview next year.

2. Recognition of Staff

The Auburn School District Board of Directors will recognize Stacy Swensrud, teacher at Arthur Jacobsen Elementary, for her outstanding service.

Stacy has worked in the Auburn School District for 14 years. She taught at Chinook for six years and has been at Arthur Jacobsen for eight years. She currently teaches a 3/4 split.

Prior to working in the Auburn School District, she was a substitute teacher in Federal Way and Sumner.

Stacy earned her bachelor degree from Western Washington University and her master in elementary education from Walden University.

"I love working with kids, especially when they have that 'aha' moment and it clicks," Stacy said. "We have great parent involvement, a supportive staff, and the kids are wonderful."

Colleague Breanna Bushaw said, "Stacy is a great mentor and is always willing to answer questions, share resources and help everyone around her be successful."

"Stacy is an extraordinary teacher," said Arthur Jacobsen principal Eric Daniel.

Born and raised in Bonney Lake, Stacy and Matt, her husband of 14 years, still live in Bonney Lake with their two kids, Emma and Caleb.

When not teaching, she enjoys camping, reading, playing board games and spending time with family and friends.

STUDENT PARTICIPATION

1. Auburn Riverside High School Booster Club Program

Ryan Foster, associate superintendent of principal leadership and school programs, will introduce Dave Halford, Auburn Riverside High School principal, who will introduce Michelle Baker and Becky Miller, Auburn Riverside High School staff. The team will present the Auburn Riverside High School Booster Club program report and answer questions from the board.

2. Activity/Athletic Report–Auburn Riverside High School Boys and Girls Lacrosse Program

Ryan Foster will reintroduce Dave Halford, who will introduce Lou Lucchesi and Kelsey Mitchell, Auburn Riverside High School coaches, and Natalie Raum, Brooklyn Forte, and Denver Rogers, students. The students will report on the Auburn Riverside High School boys and girls lacrosse program and answer questions from the board.

3. Requests for Travel

- a. Twenty Auburn High School students request permission to travel to Seattle, Friday to Sunday, April 7-9. The purpose of the trip is to attend the Journalism Conference. Lodging will be at the Seattle Sheraton hotel, meals will be at local restaurants, and travel will be by school bus. All expenses will be paid by ASB funds. Thomas Kaup, Auburn High School teacher, requests permission to accompany the students. One substitute will be needed for one day.

Fern Valentine, retired advisor and chaperone, requests permission to accompany the students.

- b. Eleven Auburn High School students, 11 Auburn Mountainview High School students, and 11 Auburn Riverside High School students request permission to travel to Pullman, Monday to Tuesday, April 10-11. The purpose of the trip is to participate in the Spring Break College Trip to CWU, EWU, and WSU. Lodging will be at the Best Western hotel, meals will be at local restaurants, and travel will be by charter bus. All expenses will be paid by the College Success Foundation. Tremaine Frazier-Stanley, Conrad Webster, and Sam Washington, Auburn High School, Auburn Mountainview High School, and Auburn Riverside High School teachers, respectively, request permission to accompany the students. No substitutes will be needed.

Miyoshi White, parent chaperone, requests permission to accompany the Auburn Riverside High School students.

- c. Ten Auburn High School students request permission to travel to Pasco, Friday to Saturday, April 14-15. The purpose of the trip is to compete in the Pasco Boys and Girls Invitational Track Meet. Lodging will be at the Best Western hotel, meals will be at local restaurants, and travel will be by rental vans. All expenses will be paid by ASB funds. Douglas Burt, Dan Irwin, Rick Minitoli, Erick Opel, Greg Isham, and Ericka Oxley, Auburn High School coaches, request permission to accompany the students. No substitutes are needed.
- d. One Auburn Mountainview High School student requests permission to travel to Fort Myers, Florida, Wednesday to Friday, May 17-19. The purpose of the trip is to compete in the Senior National Gymnastics Tournament. Lodging will be at the Diamondhead hotel, meals will be at local restaurants, and travel will be by airplane. All trip expenses will be paid by personal funds; substitute expense paid by district funds. Jayme Hostetter, Auburn Mountainview High School teacher, requests permission to accompany the student. One substitute will be needed for three days.

Recommendation:

That the above trips be approved as requested.

SCHOOL PROGRAMS AND STUDENT ACHIEVEMENT

1. Auburn Riverside High School 2016-17 PLC Presentation

Ryan Foster will reintroduce Dave Halford who will introduce Nola Wilson, Auburn Riverside High School assistant principal, along with Carol Barnett, Stacy Bardsley, and Akiko Newcomb, Auburn Riverside High School staff members. The team will give a brief PowerPoint overview of how the Professional Learning Community model has been utilized to increase student achievement at Auburn Riverside High School and answer questions from the board. This presentation aligns with the 2013-16 District Strategic Plan: Goal 1, Objective 1, Strategy 1.

2. Communities In Schools Report

Rhonda Larson, assistant superintendent of family engagement and student success, will introduce Arlene Pierini, executive director of Communities In Schools of Auburn, who will share a presentation and other information about this leading dropout prevention organization at work in our schools and answer questions from the board. This is in support of the District Strategic efforts focused on community partnerships and high school graduation rates.

3. 2013-16 District Strategic Plan Progress Report

Ryan Foster will present the extended 2013-16 District Strategic Plan progress report for the period of December 2016 - February 2017 and answer questions from the board. This presentation aligns with the Auburn School Board 2015-16 Stated District Goals, Standard II ("set and communicate high expectations for student learning with clear goals and plans for meeting those expectations and celebrate success"); Goal 1 ("monitor the progress for the Auburn School District Strategic Improvement Plan II"). Click on the following link to access report: [Strategic Plan 2.0 Implementation Report 2016-17 FWS Update](#). (You may wish to create a copy in Google drive for your personal editing purposes.)

ARHS PLC REVIEW

- Began with a focus on 9th grade and core classes ...fewer but focused
- Last year, A/B alternating bi-weekly schedule introduced
- Over 30, active and thriving!

Welcome to our World...



...World Languages PLCs

ARHS Spanish Department PLC

Colleagues and friends

Olympic and Mount Baker join
us.



Juan Nuñez

Bryce
Strand



Carol Barnett

Kaisa
Swenddal-
White



Laura
King

Dorin
Meinhart

Common Assessments, unique styles:

- Each chapter's **summative test is the same** for First year, Second year, and Third year Spanish.
- Fourth year uses University of Washington tests.
 - Each test has listening, reading and grammar elements and *either* a speaking or writing element.
- **Our teaching styles are reflected in our formative tests and the activities we use.**
- Our learning targets are the same for each chapter, but not necessarily on the same day.

DATA !

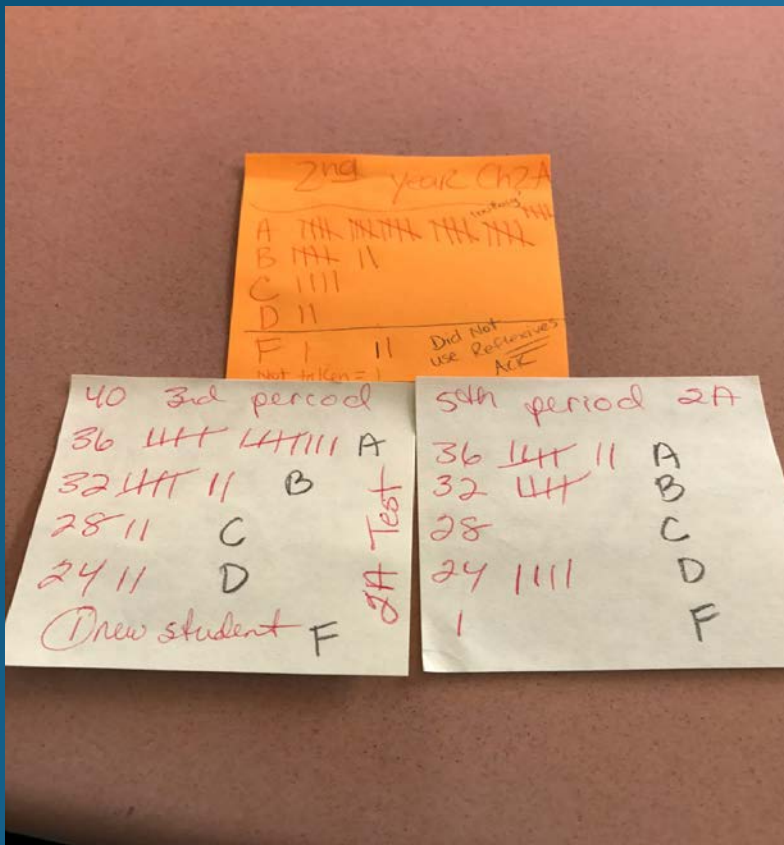
➤ DATA Sharing!

➤ Questions:

Is the test too easy?

➤ Why did 5 students fail?

➤ Poor attendance and no practice work



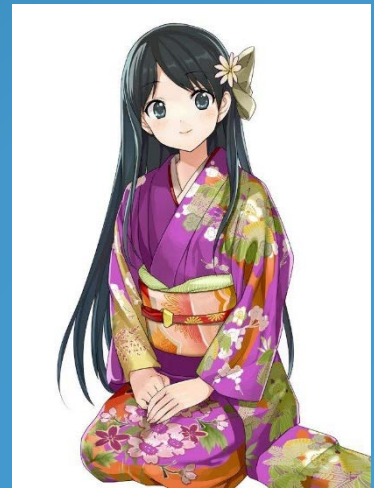
Where do we go from here?

- Observing each other teach “hard to grasp” concepts?
 - Video taping ourselves teaching various concepts and discuss with other World Language teachers?
- Where to find the time to work with struggling students?
 - How do we challenge our top students without them feeling “punished”?

Cross District PLC Japanese Language



- Once a month
- We get together to hold
 - Japanese PLC at
 - AMHS



Cross District PLC

Members



Jessica Lee

Auburn Mountainview High School

Akiko Newcomb



Auburn Riverside High School

Targets

We focus on the following skills

Speaking:

Listening:

Reading:

Writing:

Culture:



Our PLC Goals

How to create a powerful and student friendly daily lesson ?

How to find out if our students understand and retain their skills and knowledges?

How to reteach if students did not master the materials?

How to accommodate each student's need?

How to acknowledge and involve our student's family with supporting their student's learning environment?

How to interact and participate in our community activities?

Cultural Event

- ❖ Calligraphy
- ❖ We share our materials and lesson plans.



Auburn, Kent & Tanba Japan Student Ambassador Program

The organization works to cultivate exchange relationships between students on both sides of the Pacific, through home stays during the summer.



ARHS PLC REVIEW

How can a group of singletons
have a successful PLC?



Stacy Bardsley
German Teacher & World Languages
Department Head

Our PLC Members

➤ Cindy Anderson (ASL)



➤ Stacy Bardsley (German)

➤ Akiko Newcomb (Japanese)



➤ Kim Polley (French)



The 5 Cs (National Standards) of World Languages

- ❖ **Communication**: Communicate in a language other than English. *USE* the language (interpersonal, interpretive, presentational).
- ❖ **Culture**: Gain knowledge and understanding of other cultures. Learning a language is more than speaking it!
- ❖ **Communities**: Participate in multilingual communities at home and around the world. (Language should be practiced within *and* beyond the classroom).
- ❖ **Comparisons**: Develop insight into the nature of language and culture as compared to our own.
- ❖ **Connections**: Connect with other disciplines and acquire information.

Why our singleton PLC works:


- ❖ World Languages are like-minded and have the same goals/ standards
- ❖ Desire to work together
- ❖ Mutual respect
- ❖ Willingness to learn from each other
- ❖ Success for each other/ each others' students

Our work:

- ❖ Common Assessments based on vocabulary theme or grammar topic
- ❖ Data analysis
- ❖ Ideas for improving student learning
- ❖ Common activities/ projects (short stories, poems, journals, group work, etc.)

**Thank you
for your ongoing
support of our
important PLC work
and we welcome you to
come join us!**

COMMUNITIES IN SCHOOLS OF AUBURN

A group of approximately 15 people, including school staff, community members, and children, are posed for a group photo. The background is a blue wall with a mural of a landscape. Several individuals are wearing red and black jackets with "FIRE" written on them. A woman in a light-colored coat is kneeling in the foreground on the right. A semi-transparent blue box with white text is overlaid on the bottom left of the image.

Our mission is to surround students with a community of support, empowering them to stay in school and achieve.



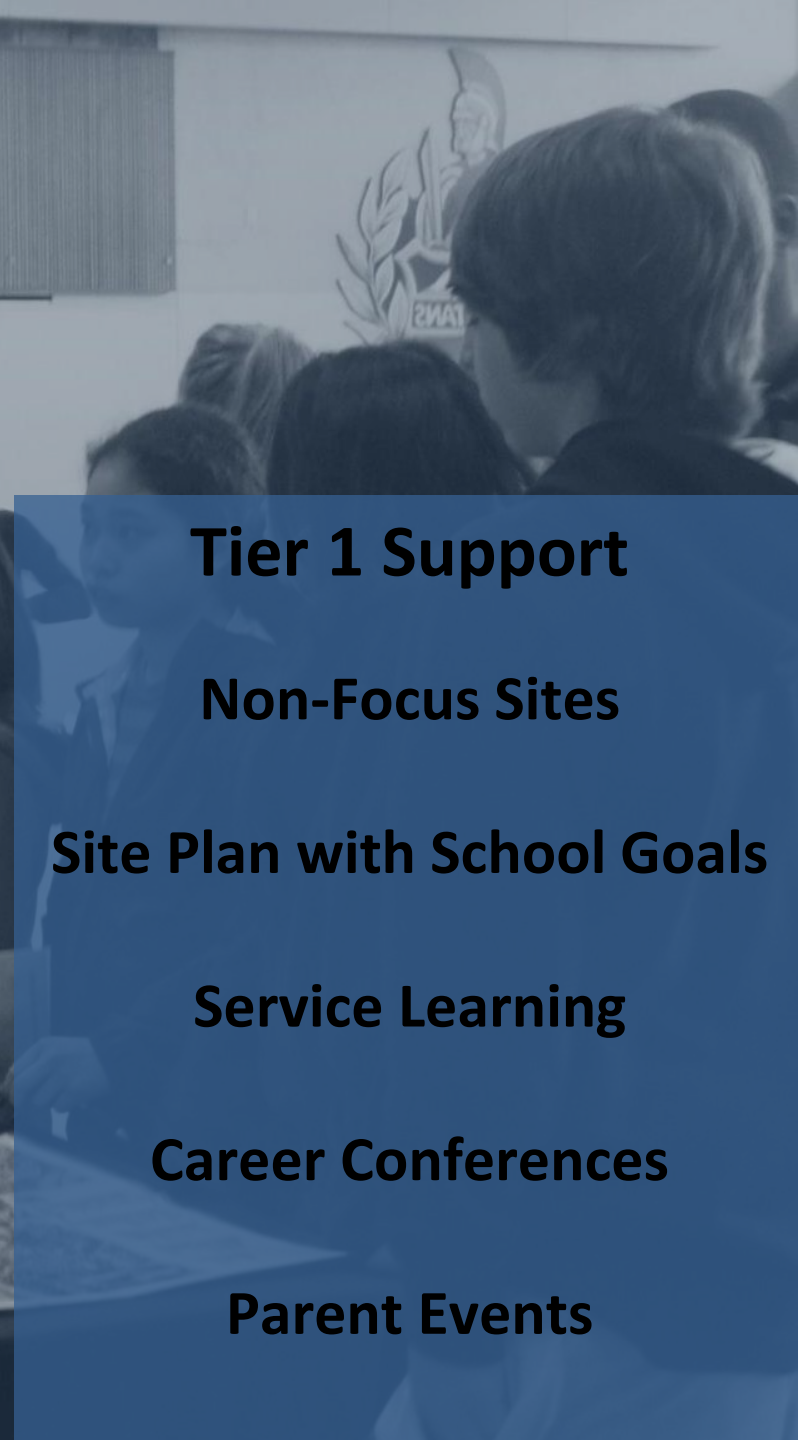
The CIS Model of Integrated Student Services

Our Evidence Based Model places site coordinators inside high needs schools to mobilize community resources to address both academic and non-academic barriers to learning for at risk students.



Site Coordinators Provide 3 Tiers of Support

- 1. Whole school support to promote a positive school culture.**
- 2. Less intensive case management.**
- 3. Intensive case management.**



Tier 1 Support

Non-Focus Sites

Site Plan with School Goals

Service Learning

Career Conferences

Parent Events



Brokered & Delivered

Case Management

Basic Needs

Tutoring

Attendance Support



**560 students received case managed support.
73% made significant progress toward goals.**



Basic Needs

**In-kind donations - 3,772 students
clothing/grooming aids/school supplies**

Direct Assistance - 225 Students

Alarm Clocks/Glasses/Camp Auburn Scholarships

Brokered - 436



Tutoring

CISA Staff, Peer Tutors, Community Volunteers

270 students participated

75% met improved academic goals

54 students served as cross-age tutors

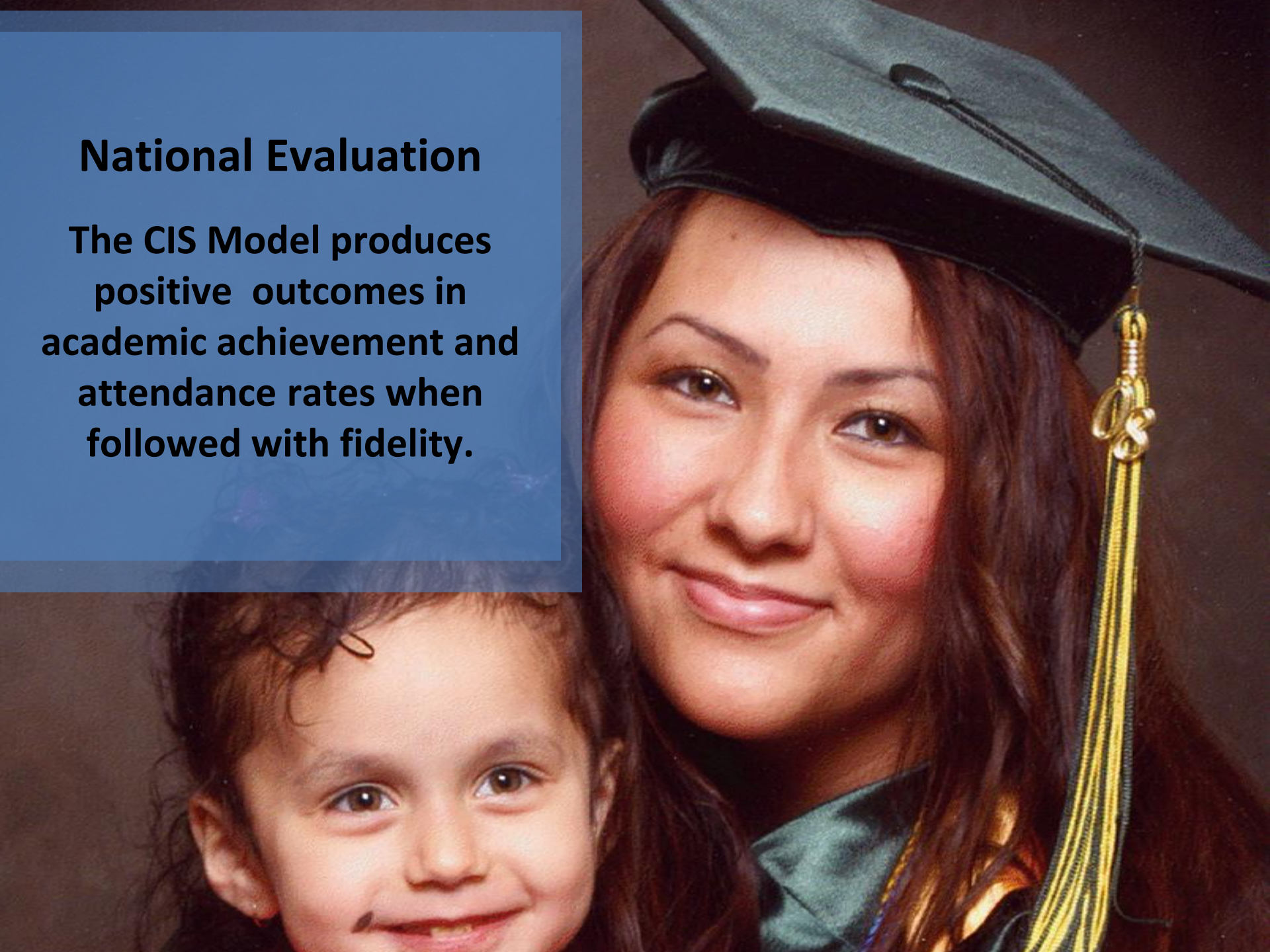


2016/2017 Budget \$350,600

1. \$218,500 Personnel – Director, Site Coordinators, AmeriCorps
2. \$55,000 In-Kind
3. \$29,000 ASD Grant
4. \$33,200 Operations
5. \$14,900 Services

National Evaluation

**The CIS Model produces
positive outcomes in
academic achievement and
attendance rates when
followed with fidelity.**



Services	Needs Assessment	Support Plans	Widely Available Support	School Supplies	Basic Needs & Supplies	Basic Needs Financial	Brokered Basic Needs	Parent Engagement	Tutoring	Referral to Services	Service Learning	Case Management
Tier I Services 13 Non Focus Sites 498 Students				Distribution of backpacks & supplies by CISA office	Certificates for Eye Glasses, distributions of clothing and additional supplies as available by CISA office	5 th Grade Camp Auburn Scholarships Basic needs requests administered by CISA office	Food to Go Across 8 elementary sites supported by CISA office					
Tier 1 Services 9 Focus Sites All middle Schools & Dick Scobee, Gildo Rey, Terminal Park, Alpac & Washington 5825 Students	Site needs assessment involving input from multiple stake holders	Site Plan created with School wide goals & strategies to achieve outcomes	Middle school career conferences, beautification projects, curriculum enrichment materials, office supplies, chairs	Broad distribution by site coordinator	Certificates for Eye Glasses, clothing & distributions of additional supplies as available by site coordinator	Basic needs requests for general school population		Parent Events e.g. Literacy Nites & Reaching Out Fair			Service Learning opportunity for general school population	
Tier 2 & 3 9 Focus Sites 560 Students 73% of case managed students made progress toward goals. 89% of these students were eligible for Free and Reduced lunch	Student Needs Assessment	Student support plan created with individual goals and strategies to achieve outcomes		Distribution of supplies to case managed students by site coordinator	Certificates for eye glasses, clothing & distributions of additional supplies as available by site coordinator to case managed students	Basic needs requests for case managed students	Food to Go for case managed students distributed by site coordinator	Parent calls, meetings & permission slips	Peer Tutoring, Study buddies, Study hub, Community Volunteers, tutoring by site coordinators	Referral to services e.g. leadership camps, counseling & basic needs support	Service learning for case managed students	Periodic check ins with Tier 3 receiving frequent check ins, monitoring after each grading period

4.21.17

Save The Date

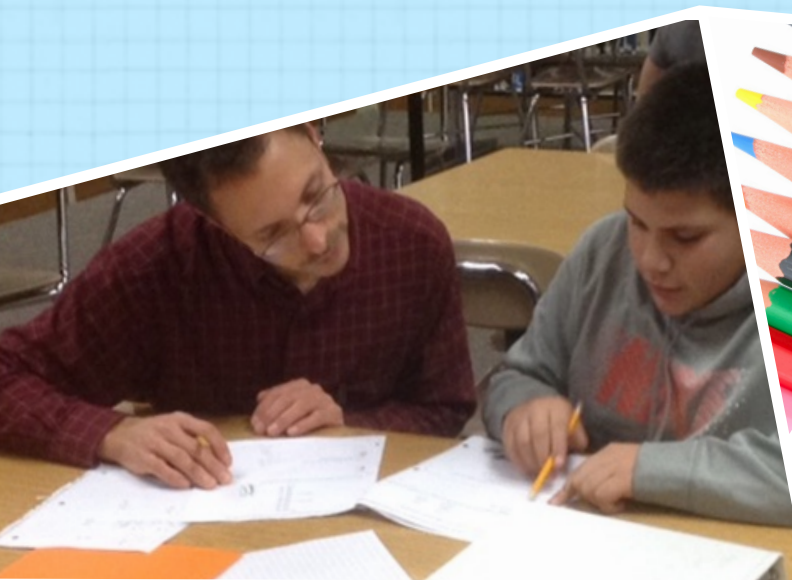
Coming Together for Kids
Fundraising Dinner
and Auction



Communities
In Schools

Auburn

★ **Live and silent auction
with experiences, event
tickets and more!**



RSVP at <http://auburn.ciswa.org> or
email — director@cisauburn.org

Green River College
12401 SE 320th Street, 98092
6:00pm - 9:00pm
55\$ per ticket, includes dinner

13th Annual

**502 Fourth Street NE
Auburn, WA 98002**

Hope
you can
attend!

All proceeds to benefit students in need and tutoring programs.

PERSONNEL--CERTIFICATED AND CLASSIFIED

1. Certificated and Classified Personnel Report

Attached is the personnel report, for certificated and classified personnel, for the board's approval.

Recommendation: That the board approve the attached report.

2. Requests for Travel

- a. Ryan Foster requests permission to travel to San Antonio, Texas, Friday to Saturday, March 31 - April 1. The purpose of the trip is to present ATLA Teacher Leadership Model at the Association of State Supervisors of Mathematics Conference. Lodging will be at a hotel to be determined, meals will be at local restaurants, and travel will be by airplane. All expenses will be paid by CSTP. No substitute will be needed.
- b. Tom McDermott, assistant director of career and college readiness; Shawna Leonard and Veronika Raguzin-Holloman, Auburn Riverside High School assistant principal and counselor respectively; Albert Vaughns, Mt. Baker Middle School counselor, and Steve Homfeldt, Cascade Middle School teacher, request permission to travel to Orlando, Florida, Monday to Thursday, April 24-27. The purpose of the trip is to attend the Prepárate Diversity Conference. Lodging will be at the Hilton hotel, meals will be at local restaurants, and travel will be by airplane. All expenses will be paid by district funds. One substitute will be needed for four days.
- c. Vicki Bates, assistant superintendent of technology, requests permission to travel to Kansas City, Missouri, Wednesday to Monday, April 26 - May 1. The purpose of the trip would be to attend the White Privilege Conference. Lodging will be at the Marriott hotel, meals will be at local restaurants, and travel will be by airplane. All expenses will be paid by district funds. No substitute will be needed.
- d. Adam Couch, Dick Scobee Elementary School principal, and David Moynihan, Lacey Orr, Angela Lavine, Zachary Garner, Lindsay Spears, and Ashley Eronemo, Dick Scobee Elementary School staff, request permission to travel to Rosemont, Illinois, Sunday to Tuesday, June 11-13. The purpose of the trip would be to attend the No Excuses University Leadership Institute. Lodging will be at the Double Tree Hilton hotel, meals will be at local restaurants, and travel will be by airplane. All expenses will be paid by district funds. Two substitutes will be needed for two days.

- Recommendation: That the above trips be approved as requested.

PERSONNEL REPORT - CERTIFICATED								
	Classification	Job Type	Building	Name	Start Date	Hours	Rate of Pay	Comment
Curriculum-Noncurriculum								
	CERTIFICATED	CAMP AUBURN	LAKE VIEW	CALDWELL, JENNIFER	5/2/17		STIPEND \$428	
	CERTIFICATED	CAMP AUBURN	LAKE VIEW	GRECO, GINA	5/2/17		STIPEND \$428	
	CERTIFICATED	CAMP AUBURN	LAKE VIEW	MIRACLE, CYNDIE	5/2/17		STIPEND \$428	
	CERTIFICATED	CAMP AUBURN	GILDO REY	VANDERSCHULDEN, SASHA	3/9/17		STIPEND \$428	
	CERTIFICATED	CAMP AUBURN	GILDO REY	SELLERS, KAITLYN	3/9/17		STIPEND \$428	
	CERTIFICATED	CAMP AUBURN	GILDO REY	ARAMBURU, CARLY	3/9/17		STIPEND \$428	
	CERTIFICATED	CASE OVERLOAD PAY	ANNEX	SENGER, CANDY	2/1/17	30	\$29.45	
	CERTIFICATED	CLEAN OUT CLASSROOM	CHINOOK	MINUS, TONETTE	3/2/17	14	\$53.40	
	CERTIFICATED	CLEAN OUT CLASSROOM	LAKELAND HILLS	ALEXANDER, NANCY	4/1/17	14	\$53.40	
	CERTIFICATED	CLEAN OUT CLASSROOM	HAZELWOOD	GORDON, SANDRA	6/1/17	14	\$53.40	
	CERTIFICATED	CLEAN OUT CLASSROOM	WEST AUBURN	STOLIKER JR., DORNFORD	4/1/17	14	\$53.40	
	CERTIFICATED	COMPUTER SCIENCE FUNDAMENTALS	ILALCO	MOORE, ERIKA	3/11/17		STIPEND \$150	
	CERTIFICATED	COMPUTER SCIENCE FUNDAMENTALS	EVERGREEN HTS	STENSON, RIKKI	3/11/17		STIPEND \$150	
	CERTIFICATED	COMPUTER SCIENCE FUNDAMENTALS	LAKELAND HILLS	SCHUMAN, SUSAN	3/11/17		STIPEND \$150	
	CERTIFICATED	CTSO LEADERSHIP COMPETITION	AUBURN HIGH	EDWARDS, KURT	9/1/16	35	\$36.98	
	CERTIFICATED	CURRICULUM WORK	RAINIER	LUDWIGSON, CHRISTINE	1/30/17	14	\$50.37	
	CERTIFICATED	CURRICULUM WORK	ILALCO	OLSON, CAROLYN	3/2/17	14	\$53.40	
	CERTIFICATED	CURRICULUM WORK	CASCADE	KILLETT, CASEY	12/6/16	25	\$45.26	
	CERTIFICATED	EARLY LEARNING FAIR	LEA HILL	HOUGLUM, ROSEMARY	3/3/17	3	\$30.24	
	CERTIFICATED	EARLY LEARNING FAIR	LEA HILL	LEAF-DENT, KATHERINE	3/3/17	3	\$35.46	
	CERTIFICATED	EARLY LEARNING FAIR	ALPAC	LEITZKE, STACY	3/3/17	3	\$41.36	
	CERTIFICATED	EARLY LEARNING FAIR	LEA HILL	MARSHALL, LAURA	3/3/17	3	\$36.51	
	CERTIFICATED	EARLY LEARNING FAIR	WASHINGTON	MAYER, DONNA	3/3/17	3	\$52.36	
	CERTIFICATED	EARLY LEARNING FAIR	DICK SCOBEE	MCCORMICK, LAUREL	3/3/17	3	\$35.24	
	CERTIFICATED	EARLY LEARNING FAIR	LAKE VIEW	SPEER, CHELSEY	3/3/17	3	\$29.86	
	CERTIFICATED	EARLY LEARNING FAIR	ADMIN	CRAMER, JOAN	3/3/17	3	\$46.62	
	CERTIFICATED	EARLY LEARNING FAIR	AUBURN HIGH	KILLIAN, MARCI	3/8/17	5	\$35.24	
	CERTIFICATED	ECE/SLC TABLET TRAINING	LEA HILL	LEAF-DENT, KATHERINE	2/1/17	2	\$35.47	
	CERTIFICATED	ELEMENTARY EXTENDED DAY LEARNING PROG	HAZELWOOD	ANDERSON, MARY	10/24/16	10	\$53.40	
	CERTIFICATED	EXTRA HOURS	ANNEX	RUPP, TERI	2/16/17	5	\$53.40	
	CERTIFICATED	EXTRA HOURS FOR SIP DAY	RAINIER	MORRIS, HEIDI	1/1/17	19	\$63.50	
	CERTIFICATED	EXTRA HOURS PD FULLY REVISED SIP	RAINIER	BAILEY, DEBORAH	9/1/16	58.5	\$28.33	
	CERTIFICATED	GENERAL & SPECIAL ED CONF ATTENDANCE	DSL	MITZELFELT, CONNIE	3/1/17		STIPEND \$330	
	CERTIFICATED	GENERAL & SPECIAL ED CONF ATTENDANCE	DSL	RUTHERFORD, VICKI	3/1/17		STIPEND \$330	
	CERTIFICATED	HS MATH COMPETITION PREP	AUB RIVERSIDE	ZEIGER, ERNEST	3/8/17	4	\$48.10	
	CERTIFICATED	HS MATH COMPETITION PREP	AUB RIVERSIDE	TAUZER, LESLIE	3/8/17	4	\$51.13	
	CERTIFICATED	HS MATH COMPETITION PREP	AUB RIVERSIDE	CAPPS, JASON	3/8/17	8	\$53.40	
	CERTIFICATED	LANGUAGE ARTS CURRICULUM	AUBURN HIGH	SCHLEICHER, STEPHANIE	9/5/16	8.4	\$47.21	
	CERTIFICATED	LANGUAGE ARTS CURRICULUM	AUBURN HIGH	MARSHALL, ANNA	9/5/16	14	\$43.93	
	CERTIFICATED	LANGUAGE ARTS CURRICULUM	AUBURN HIGH	HARMON, SHERYL	9/5/16	14	\$53.40	
	CERTIFICATED	LANGUAGE ARTS CURRICULUM	AUBURN HIGH	HARDERSEN, HANNAH	9/5/16	14	\$36.98	
	CERTIFICATED	LANGUAGE ARTS CURRICULUM	AUBURN HIGH	ALASTRA, ABIJAH	9/5/16	14	\$48.01	
	CERTIFICATED	LANGUAGE ARTS CURRICULUM	AUBURN HIGH	BOWLER, DONNA	9/5/16	14	\$39.57	
	CERTIFICATED	LANGUAGE ARTS CURRICULUM	AUBURN HIGH	CALLERO, ANTHONY	9/5/16	14	\$53.40	
	CERTIFICATED	LANGUAGE ARTS CURRICULUM	AUBURN HIGH	CLEARY, JAMES	9/5/16	14	\$53.40	

	CERTIFICATED	LANGUAGE ARTS CURRICULUM	AUBURN HIGH	CONNELLY, ERICKA	9/5/16	14	\$48.01	
	CERTIFICATED	LANGUAGE ARTS CURRICULUM	AUBURN HIGH	ERIE, JANICE	9/5/16	14	\$48.01	
	CERTIFICATED	LANGUAGE ARTS CURRICULUM	AUBURN HIGH	BRAND, CAITLYN	9/5/16	14	\$28.72	
	CERTIFICATED	LANGUAGE ARTS CURRICULUM	AUBURN HIGH	VASILIOU, MARIA	9/5/16	9.8	\$32.28	
	CERTIFICATED	LANGUAGE ARTS CURRICULUM	AUBURN HIGH	ASFOUR, APRIL	9/5/16	14	\$35.85	
	CERTIFICATED	PARENT INVOLVEMENT NIGHTS	DICK SCOBEE	LYSENE, SARAH	1/30/17		STIPEND \$500	
	CERTIFICATED	PREP FOR #TECHCONNECT PRESENTATIONS	ALPAC	WOODRUFF, JILLYAN	3/13/17	3	\$35.85	
	CERTIFICATED	PREP FOR #TECHCONNECT PRESENTATIONS	OLYMPIC	STROBEL, KIMBERLY	3/13/17	3	\$53.40	
	CERTIFICATED	PREP FOR #TECHCONNECT PRESENTATIONS	ARTHUR JACOBSEN	SPENCER JR., ARTHUR	3/13/17	3	\$53.40	
	CERTIFICATED	PREP FOR #TECHCONNECT PRESENTATIONS	CHINOOK	SIGNAL, MICHAEL	3/13/17	3	\$42.00	
	CERTIFICATED	PREP FOR #TECHCONNECT PRESENTATIONS	OLYMPIC	PRICE, CHRISTY	3/13/17	3	\$42.63	
	CERTIFICATED	PREP FOR #TECHCONNECT PRESENTATIONS	DICK SCOBEE	PFAB, TIMOTHY	3/13/17	3	\$53.40	
	CERTIFICATED	PREP FOR #TECHCONNECT PRESENTATIONS	ILALKO	MCKEEVER, ALLISON	3/13/17	3	\$51.13	
	CERTIFICATED	PREP FOR #TECHCONNECT PRESENTATIONS	ILALKO	MARTIN, MICHAEL	3/13/17	3	\$44.60	
	CERTIFICATED	PREP FOR #TECHCONNECT PRESENTATIONS	AUB RIVERSIDE	MALONE, COARIN	3/13/17	3	\$46.63	
	CERTIFICATED	PREP FOR #TECHCONNECT PRESENTATIONS	LAKE VIEW	LUTES-JOHNSON, TRINA	3/13/17	3	\$35.47	
	CERTIFICATED	PREP FOR #TECHCONNECT PRESENTATIONS	EVERGREEN HTS	LOUIE, ALISA	3/13/17	3	\$45.26	
	CERTIFICATED	PREP FOR #TECHCONNECT PRESENTATIONS	MT. VIEW SR HIGH	LEE, JESSICA	3/13/17	3	\$45.26	
	CERTIFICATED	PREP FOR #TECHCONNECT PRESENTATIONS	LAKELAND HILLS	LEAF, VICKIE	3/13/17	5	\$53.40	
	CERTIFICATED	PREP FOR #TECHCONNECT PRESENTATIONS	ARTHUR JACOBSEN	KEMP, BRIAN	3/13/17	3	\$29.86	
	CERTIFICATED	PREP FOR #TECHCONNECT PRESENTATIONS	LAKELAND HILLS	JEFFREYS, CHRISTA	3/13/17	3	\$41.37	
	CERTIFICATED	PREP FOR #TECHCONNECT PRESENTATIONS	AUB RIVERSIDE	GALLINATTI, LISA	3/13/17	3	\$53.40	
	CERTIFICATED	PREP FOR #TECHCONNECT PRESENTATIONS	ANNEX	FRAZIER, LESLIE	3/13/17	3	\$52.36	
	CERTIFICATED	PREP FOR #TECHCONNECT PRESENTATIONS	MT. VIEW SR HIGH	FRANCE, ADAM	3/13/17	3	\$53.40	
	CERTIFICATED	PREP FOR #TECHCONNECT PRESENTATIONS	DICK SCOBEE	DWYER, VERONICA	3/13/17	3	\$37.30	
	CERTIFICATED	PREP FOR #TECHCONNECT PRESENTATIONS	ILALKO	DUTOIT, MICHELLE	3/13/17	5	\$53.40	
	CERTIFICATED	PREP FOR #TECHCONNECT PRESENTATIONS	AUB RIVERSIDE	DICKSON, GLENN	3/13/17	5	\$34.09	
	CERTIFICATED	PREP FOR #TECHCONNECT PRESENTATIONS	ARTHUR JACOBSEN	COVEY, ERICA	3/13/17	3	\$37.65	
	CERTIFICATED	PREP FOR #TECHCONNECT PRESENTATIONS	MT. BAKER	CARSTENS, CORRIE	3/13/17	3	\$53.40	
	CERTIFICATED	PREP FOR #TECHCONNECT PRESENTATIONS	OLYMPIC	CARNEY, ORLYN	3/13/17	3	\$52.36	
	CERTIFICATED	REVIEW CURRICULUM MATERIALS	RAINIER	TODD, KRISTIN	2/17/17	3	\$43.07	
	CERTIFICATED	REVIEW CURRICULUM MATERIALS	MT. BAKER	ROOT, MICALA	2/17/17	3	\$53.40	
	CERTIFICATED	REVIEW CURRICULUM MATERIALS	MT. BAKER	ROGERS, STACEY	2/17/17	3	\$48.01	
	CERTIFICATED	REVIEW CURRICULUM MATERIALS	CASCADE	RESTER, JULI	2/17/17	3	\$47.36	
	CERTIFICATED	REVIEW CURRICULUM MATERIALS	RAINIER	OLSON, THOMAS	2/17/17	3	\$29.86	
	CERTIFICATED	REVIEW CURRICULUM MATERIALS	MT. BAKER	NELSON, SHARI	2/17/17	3	\$39.11	
	CERTIFICATED	REVIEW CURRICULUM MATERIALS	OLYMPIC	LENIHAN, LAINE	2/17/17	3	\$53.40	
	CERTIFICATED	REVIEW CURRICULUM MATERIALS	CASCADE	KILLET, CASEY	2/17/17	3	\$45.26	
	CERTIFICATED	REVIEW CURRICULUM MATERIALS	OLYMPIC	GREENWOOD, MICHELLE	2/17/17	3	\$30.59	
	CERTIFICATED	REVIEW CURRICULUM MATERIALS	OLYMPIC	ENGLANDER, BRANDY	2/17/17	3	\$46.63	
	CERTIFICATED	REVIEW CURRICULUM MATERIALS	RAINIER	ARMBRUSTER, SUSAN	2/17/17	3	\$48.01	
	CERTIFICATED	REVIEW CURRICULUM MATERIALS	CASCADE	AGNEW, CORRIE	2/17/17	3	\$34.04	
	CERTIFICATED	SIP PRESENTATION	WEST AUBURN	BOSCH, MICHAEL	12/7/16	3	\$38.42	
	CERTIFICATED	STUDENT LUNCH DETENTION	MT. VIEW SR HIGH	STEPHENSON, KATHRYN	2/1/17	3	\$28.33	
	CERTIFICATED	STUDENT RECAPTURE PROGRAM	AUB RIVERSIDE	HUYLAR, MICHAEL	2/13/17	52	\$53.40	
	CERTIFICATED	STUDENT RECAPTURE PROGRAM	AUB RIVERSIDE	HALFORD, SANDRA	2/13/17	52	\$39.75	
	CERTIFICATED	SUPPORT FOR EXPANDED ENROLLMENT	MT. BAKER	CARNAHAN, ERIN	2/14/17	10	\$53.40	
	CERTIFICATED	TITLE DATA, SKYWARD CODING	WEST AUBURN	BOSCH, MICHAEL	2/13/17	77	\$38.41	
	CERTIFICATED	TITLE TUTORING	AUB RIVERSIDE	MCCANN, VALLERY	2/8/17	55	\$45.26	

	CERTIFICATED	TUTORING	LEA HILL	BUTLER, REGINA	3/7/17	28	\$50.37	
Leave								
	CERTIFICATED	E-LEARNING SPECIALIST (.2)	LAKELAND HILLS	WRIGHT, DORETTA	9/6/17			PERSONAL
	CERTIFICATED	KINDERGARTEN	DICK SCOBEE	JENSEN, STEPHANIE	9/6/17			RELOCATION
New Hire								
Resignation	CERTIFICATED	ECE	DICK SCOBEE	MEHEULA, LYNDIA	6/22/2017			RELOCATION
	CERTIFICATED	M-SOCIAL STUDIES	RAINIER	LUDWIGSON, CHRISTINE	6/23/2017			RETIREMENT
	CERTIFICATED	NURSE	ANNEX	SCHNEIDER, JANET	6/23/2017			RETIREMENT
	CERTIFICATED	SLP	ANNEX	QUALLS, VERNE	6/23/2017			RETIREMENT
	CERTIFICATED	S-SCIENCE	AUBURN HIGH	MORRIS, BRUCE	3/9/2017			RETIREMENT
PERSONNEL REPORT - CLASSIFIED								
Curriculum-Noncurriculum								
	CLASSIFIED	6TH GRADE BOYS TRACK COACH	RAINIER	REAGAN, STEVEN	4/24/2017	40	\$19.58	
	CLASSIFIED	ASSISTANT COACH - BASEBALL	AUB RIVERSIDE	BARTLETT, TIMOTHY	2/27/2017	100	\$20.00	
	CLASSIFIED	ASSISTANT COACH - BASEBALL	AUB RIVERSIDE	STURZA, ZACHERY	2/27/2017	75	\$20.00	
	CLASSIFIED	ASSISTANT COACH - BASEBALL	AUB RIVERSIDE	WILLIAMSON, AUSTIN	2/27/2017	50	\$20.00	
	CLASSIFIED	ASSISTANT COACH - BASKETBALL GIRLS	AUB RIVERSIDE	LE, VINNY	11/1/2016	60	\$20.00	
	CLASSIFIED	ASSISTANT COACH - TRACK	MT.VIEW SR HIGH	WEBSTER JR, CONRAD	2/27/2017	180	\$20.68	
	CLASSIFIED	ASSISTANT COACH - TRACK	OLYMPIC	MAY, JONNA	4/17/2017	150	\$19.60	
	CLASSIFIED	EARLY LEARNING FAIR SUPPORT	AUBURN SR HIGH	BALL, LORETTA	3/8/2017	5	\$20.54	
	CLASSIFIED	POST SEASON PAY	AUB RIVERSIDE	TURNER, MICHAEL	1/30/2017		STIPEND \$686	
	CLASSIFIED	POST SEASON PAY	AUB RIVERSIDE	JONES, ERIC	1/30/2017		STIPEND \$1029	
	CLASSIFIED	POST SEASON PAY	AUB RIVERSIDE	HARDERSEN, KERRY	1/23/2017		STIPEND \$686	
	CLASSIFIED	POST SEASON PAY	AUB RIVERSIDE	KAKU, CASEY	1/30/2017		STIPEND \$686	
	CLASSIFIED	POST SEASON PAY	AUB RIVERSIDE	ROBINSON, CATHY	1/30/2017		STIPEND \$1329	
	CLASSIFIED	POST SEASON PAY	AUB RIVERSIDE	GEE, KARINA	1/30/2017		STIPEND \$857.50	
	CLASSIFIED	POST SEASON PAY	MT.VIEW SR HI	ATWOOD, RYAN	2/13/2017		STIPEND \$686	
	CLASSIFIED	POST SEASON PAY	MT.VIEW SR HI	MAYBERRY, MICHELE	1/30/2017		STIPEND \$1029	
	CLASSIFIED	POST SEASON PAY	MT.VIEW SR HI	OSTRANDER, TIFFANY	2/6/2017		STIPEND \$1329	
	CLASSIFIED	POST SEASON PAY	AUBURN SR HIGH	OPEL, ERICK	1/30/2017		STIPEND \$1329	
	CLASSIFIED	POST SEASON PAY	AUBURN SR HIGH	GIRELLO, JOSHUA	1/30/2017		STIPEND \$686	
	CLASSIFIED	POST SEASON PAY	AUBURN SR HIGH	ONUFR, SHANE	1/30/2017		STIPEND \$686	
	CLASSIFIED	POST SEASON PAY	AUBURN SR HIGH	VACCA, ANTONIO	1/30/2017		STIPEND \$686	
	CLASSIFIED	POST SEASON PAY	AUBURN SR HIGH	HERREN JR., DENNIS	1/30/2017		STIPEND \$1329	
	CLASSIFIED	POST SEASON PAY	AUBURN SR HIGH	POTTERF, KELSI	1/23/2017		STIPEND \$1772	
	CLASSIFIED	POST SEASON PAY	AUBURN SR HIGH	PERRY, HALLE	2/6/2017		STIPEND \$343	
	CLASSIFIED	POST SEASON PAY	AUBURN SR HIGH	GOMEZ, TIA	1/30/2017		STIPEND \$343	
	CLASSIFIED	POST SEASON PAY	AUBURN SR HIGH	WILSON, KRISTIE	1/30/2017		STIPEND \$1329	
New Hire								
	CLASSIFIED	ASSISTANT COACH - SOCCER BOYS	AUBURN RIVERSIDE	MCDONALD, JORDAN	2/27/2017	180	\$17.26	QUALIFIED APPLICANT

	CLASSIFIED	ASSISTANT COACH - WATER POLO GIRLS	AUBURN MOUNTAINVIEW	PRITCHARD, JENNIFER	2/27/2017	180	\$18.99	QUALIFIED APPLICANT
	CLASSIFIED	ASSISTANT COACH - WRESTLING	OLYMPIC	BINETTI, JUSTIN	2/6/2017	75	\$21.37	QUALIFIED APPLICANT
	CLASSIFIED	HEAD COACH - SOCCER BOYS	AUBURN SR HIGH	GALVEZ, KELVIN	2/27/2017	198	\$25.07	QUALIFIED APPLICANT
	CLASSIFIED	HEAD COACH - WRESTLING	OLYMPIC	BINETTI, JUSTIN	2/6/2017	75	\$29.14	QUALIFIED APPLICANT
	CLASSIFIED	P-SPEC ED CLASS SIZE	LAKE VIEW	STRUCHEN-ROSSKPF, ANITA	3/14/2017	7	\$18.09	QUALIFIED APPLICANT
	CLASSIFIED	SUPERVISION	AUBURN MOUNTAINVIEW	KLEMETSEN, SAVANNAH JEAN	3/1/2017	50	\$20.00	QUALIFIED APPLICANT
Rehire								
Resignation								
	CLASSIFIED	ASSISTANT COACH - FOOTBALL	MT.VIEW SR HI	GROUT, BRIAN	11/1/2016			EMPLOYMENT ELSEWHERE
	CLASSIFIED	B-BUS DRIVER	TRANSPORTATIO	KNIGHT, CONNIE	3/17/2017			PERSONAL

BUILDING PROGRAM

1. Resolution No. 1235—Authorizing the Use of GC/CM Procedure—Olympic Middle School Reconstruction Project

Resolution No. 1235 is attached authorizing the use of GC/CM procedure on the Olympic Middle School Reconstruction project.

Jeffrey Grose, executive director of capital projects, will be present to review and recommend adoption of the resolution.

Recommendation: That Resolution No. 1235 authorizing the use of GC/CM procedure on the Olympic Middle School Reconstruction project be adopted.

2. Authorization of Award of the GC/CM Contract—Olympic Middle School Reconstruction Project

Pursuant to RCW 39.10, Auburn School District has conducted a competitive process for selection of a General Contractor/Construction Manager (GC/CM) for the Olympic Middle School Reconstruction project. This process consisted of the submittal of proposals by GC/CM firms, evaluation of proposals, interview of GC/CM firms, and the submittal of final proposals by Absher Construction Company and FORMA Construction Company.

The GC/CM firms' initial proposals, interviews, and final proposals were evaluated by a Selection Committee and scored on a competitive basis. Absher Construction Company earned the highest score, 91.78 out of 100 points, and has been determined to be the most qualified GC/CM firm for this project.

A Final Tabulation Form showing the scores earned by Absher Construction Company and FORMA Construction Company is attached.

Auburn School District and Absher Construction Company have successfully negotiated a GC/CM contract for "Construction Manager as Constructor" for this project. This contract authorizes Absher Construction Company to provide preconstruction services for a not-to-exceed amount of \$260,000.00. Upon completion of the preconstruction phase and successful negotiation of a Guaranteed Maximum Price, the administration will seek approval by the school board of an amendment to this contract to authorize Absher Construction Company to manage the construction work.

Jeffrey Grose will be present to recommend award of the GC/CM contract.

Recommendation: That the GC/CM contract for the Olympic Middle School Reconstruction project be awarded to Absher Construction Company.

**RESOLUTION AUTHORIZING USE OF
ALTERNATIVE PUBLIC WORKS:
GC/CM – General Contractor / Construction Manager**

AUBURN SCHOOL DISTRICT NO. 408

RESOLUTION NO. 1235

**A Resolution of the Board of Directors Authorizing the use of GC/CM Procedure on the
Olympic Middle School Reconstruction Project**

WHEREAS, use of the General Contractor/Construction Manager (GC/CM) procedure will serve the public interest because the use of the traditional Design/Bid/Build procedure that awards a lump-sum contract to the low responsive bidder is not practical to meet the quality standards, design requirements, construction means and methods, and delivery schedule for the Olympic Middle School Reconstruction project; and

WHEREAS, RCW 39.10.200 and .280 authorizes school districts to use the GC/CM procedure for certain school projects upon the Capital Project Advisory Review Board's Project Review Committee's determination that the use of the alternative public works contracting procedure will serve the public interest and its approval of the project; and

WHEREAS, Auburn School District received approval by the Capital Project Advisory Review Board's Project Review Committee on January 26, 2017 to use the GC/CM procedure for the Olympic Middle School Reconstruction project;

THEREFORE, BE IT RESOLVED that the Auburn School District Board of Directors approve use of the General Contractor/Construction Manager (GC/CM) procedure for the Olympic Middle School Reconstruction project and intends to comply with the requirements as defined in RCW 39.10.

Dated this 28th day of March, 2017, at a regular meeting of the Board of Directors, Auburn School District No. 408.

AUBURN SCHOOL DISTRICT NO. 408
Board of Directors

Attest:

Secretary to the Board

**ASD School District - Olympic Middle School Reconstruction
GC/CM Selection - Final Tabulation Form**

RFP's (60 Points)	Absher	Forma
Average Score	54.00	52.50

Interviews (30 Points)	Absher	Forma
Average Score	27.78	25.08

RFP and Interview Cumulative Score	81.78	77.58
---	--------------	--------------

Final Proposals (10 Points)	Absher	Forma
GC/CM MACC *	\$41,400,000	\$41,400,000
Contractor's Fee Percentage	3.00%	4.00%
Contractor's Fee Amount	\$1,242,000	\$1,656,000
Specified General Conditions	\$1,597,054	\$1,463,745
TOTAL FEE PROPOSAL	\$2,839,054	\$3,119,745
Low Final Proposal	\$2,839,054	\$2,839,054
% difference from low	0.0%	9.9%
Score (Low/Final x 10)	10.00	9.10

Total Score (100 Points possible)	91.78	86.68
---	--------------	--------------

Acknowledged Receipt of Addenda	x	x
Proposal is Signed	x	x

*Note: Note that the GC/CM MACC for purposes of calculating the GC/CM Fee does not include Specified General Conditions, Construction Managers Fee, Negotiated Support Services, Owners Contingencies, Pre-Construction Services Fees or WA State Sales Tax.

ASD reserves the right, at its sole discretion, to reject and remove from consideration any proposal if that Final Proposal Bid is not within 20% of the Low Conforming Final Proposal Bid.

ASD reserves the right, at its sole discretion, to reject any or all Proposals and to waive informalities or non-material irregularities in the Proposals received.


3/21/17
 Daniel L. Cody, Parametrix Date

The proposals and scores submitted by the GC/CM firms were reviewed by Parametrix and, to the best of our knowledge, are accurate.

1. Vouchers

Recommendation: That these vouchers be signed.

Recommendation: That authorization be given to call for bids on the above annual bid items for the 2017-18 school year.

Financial statements for the month of February will be presented for the board's information.

The following vouchers, as audited and certified by the Auditing Officer as required by RCW 42.24.080, and those expense reimbursement claims certified as required by RCW 42.24.090, are approved for payment. Those payments have been recorded on this listing which has been made available to the board.

As of March 28, 2017, the board, by a _____ vote, approves payments, totaling \$882,990.53. The payments are further identified in this document.

Total by Payment Type for Cash Account, US Bank of Washington:
Warrant Numbers 436597 through 436805, totaling \$882,990.53

Secretary _____	Board Member _____
Board Member _____	Board Member _____
Board Member _____	Board Member _____

Check Nbr	Vendor Name	Check Date	Check Amount
436597	3 WIRE GROUP INC	03/28/2017	648.92
436598	A T S AUTOMATION INC	03/28/2017	12,485.66
436599	Vendor Continued Check	03/28/2017	0.00
436600	A T S AUTOMATION INC	03/28/2017	5,557.12
436601	ADI GLOBAL DISTRIBUTION	03/28/2017	670.03
436602	AGRISHOP INC	03/28/2017	753.31
436603	ALL HANDS COMMUNITY INTERPRETI	03/28/2017	2,813.09
436604	ALPINE PRODUCTS INC	03/28/2017	184.84
436605	AMERICAN FLOORS & BLINDS	03/28/2017	88.34
436606	ARAMARK UNIFORM SERVICES	03/28/2017	130.03
436607	ASHURST, MEGAN	03/28/2017	4.00
436608	AUBURN SENIOR HIGH CULINARY AR	03/28/2017	470.00
436609	BARCLAY DEAN ARCHITECTURAL PRO	03/28/2017	2,803.20
436610	BEACON ATHLETICS	03/28/2017	735.44
436611	BILLS LOCKSMITH SERVICE INC	03/28/2017	164.25
436612	BINNING, ALISHA KAUR	03/28/2017	5.00
436613	BIRTH TO THREE DEVELOPMENTAL C	03/28/2017	28,576.00

Check Nbr	Vendor Name	Check Date	Check Amount
436614	BLAINE WINDOW HARDWARE INC	03/28/2017	379.89
436615	BRYSON SALES & SERVICE	03/28/2017	47.32
436616	BURKE, EMMA BLYTHE	03/28/2017	10.00
436617	C & M GLASS CO DBA NIEMEN GLAS	03/28/2017	45.99
436618	C N R INC	03/28/2017	1,618.86
436619	CDW GOVERNMENT INC	03/28/2017	53.08
436620	CENTURY LINK	03/28/2017	10,240.90
436621	CENTURY LINK BUSINESS SERVICES	03/28/2017	493.09
436622	CENTURY LINK	03/28/2017	33,376.00
436623	CHILDRENS THERAPY CENTER	03/28/2017	21,888.00
436624	CHUCKALS INC	03/28/2017	23.76
436625	CLARK, COLIN	03/28/2017	69.99
436626	COASTAL FARM & RANCH	03/28/2017	359.08
436627	CONSOLIDATED ELECTRICAL DIST I	03/28/2017	223.30
436628	CRESSY DOOR COMPANY INC	03/28/2017	7,894.95
436629	Vendor Continued Check	03/28/2017	0.00
436630	CUMMINS INC	03/28/2017	2,042.15
436631	DEPT OF LICENSING	03/28/2017	65.00
436632	DON SMALL & SONS OIL DIST CO	03/28/2017	123.52
436633	DORSE & COMPANY INC	03/28/2017	588.02
436634	DROHIN, YESENIA	03/28/2017	160.07
436635	DRUG FREE BUSINESS	03/28/2017	238.00
436636	DUCK DELIVERY OF WASH INC	03/28/2017	712.22
436637	DYNAMIC LANGUAGE CENTER INC	03/28/2017	516.72
436638	EASTSIDE SAW & SALES INC	03/28/2017	152.40

Check Nbr	Vendor Name	Check Date	Check Amount
436639	EBS HEALTHCARE STAFFING SERVIC	03/28/2017	4,582.50
436640	ECOLAB INC	03/28/2017	4,752.08
436641	EK BEVERAGE COMPANY	03/28/2017	1,132.30
436642	ELECTROCOM	03/28/2017	1,663.03
436643	ELECTROCOM	03/28/2017	147.83
436644	ENGLERT CONSTRUCTION CO	03/28/2017	4,896.00
436645	Vendor Continued Check	03/28/2017	0.00
436646	FERGUSON ENTERPRISES INC #3007	03/28/2017	911.40
436647	FIRE SYSTEMS WEST INC	03/28/2017	895.20
436648	FIRE SYSTEMS WEST INC	03/28/2017	665.76
436649	FLEETPRIDE	03/28/2017	112.17
436650	FRED PRYOR SEMINARS	03/28/2017	199.00
436651	GLM CHARTER BUS SERVICE	03/28/2017	1,417.00
436652	GLOBAL EQUIPMENT CO	03/28/2017	1,330.59
436653	GOPHER SPORT	03/28/2017	606.75
436654	GOS PRINTING CORP	03/28/2017	179.27
436655	GRAINGER DEPT 810392688	03/28/2017	1,218.33
436656	HAAN CRAFTS LLC	03/28/2017	344.61
436657	HEALTH CARE AUTHORITY DIVISION	03/28/2017	9,993.22
436658	HEALTH VENTURE	03/28/2017	1,968.75
436659	HOWARD, ELEIZABETH L	03/28/2017	536.93
436660	JONES, SUSAN	03/28/2017	18,736.49
436661	JW PEPPER & SON INC	03/28/2017	10.40
436662	K T FLOORS	03/28/2017	620.87
436663	KARCHER NORTH AMERICA	03/28/2017	219.39

Check Nbr	Vendor Name	Check Date	Check Amount
436664	KEITH, ASHLEY	03/28/2017	292.11
436665	KEO, ARTHUR P	03/28/2017	44.50
436666	KING COUNTY DIRECTORS ASSN	03/28/2017	4,585.07
436667	KONICA MINOLTA BUSINESS SOLUTI	03/28/2017	2,575.78
436668	KORETS, VERA	03/28/2017	38.00
436669	KUZMICH, RUFINA	03/28/2017	10.00
436670	LAKESHORE LEARNING MATERIALS	03/28/2017	197.61
436671	LONG, CINDY B	03/28/2017	43.50
436672	LOOMIS	03/28/2017	260.00
436673	LUCKS MUSIC LIBRARY	03/28/2017	92.19
436674	MARC BOLAN CONSULTING	03/28/2017	2,287.45
436675	Vendor Continued Check	03/28/2017	0.00
436676	MAXIM STAFFING SOLUTIONS	03/28/2017	14,175.00
436677	MICONTROLS INC	03/28/2017	507.99
436678	MICRO COMPUTER SYSTEMS INC	03/28/2017	2,620.34
436679	MOBY MAX LLC	03/28/2017	1,295.00
436680	MOTOR OIL SUPPLY INC	03/28/2017	1,833.58
436681	MSC INDUSTRIAL SUPPLY CO	03/28/2017	521.66
436682	MUSIC & ARTS CENTER	03/28/2017	51.44
436683	NEXUS YOUTH AND FAMILIES	03/28/2017	4,720.00
436684	NO EXCUSES UNIVERSITY	03/28/2017	3,412.40
436685	NW BATTERIES	03/28/2017	442.38
436686	NW FAMILY CHURCH	03/28/2017	770.00
436687	NW SCHOOL FOR DEAF & HARD OF H	03/28/2017	8,020.00
436688	NW TEXTBOOK DEPOSITORY	03/28/2017	1,401.72

Check Nbr	Vendor Name	Check Date	Check Amount
436689	OCCUPATIONAL HEALTH SERVICES	03/28/2017	125.00
436690	ORCA PACIFIC INC	03/28/2017	369.01
436691	OUTPATIENT PHYSICAL THERAPY &	03/28/2017	10,642.20
436692	PATTERSON BUCHANAN FOBES & LEI	03/28/2017	6,655.49
436693	PEDRO SR, JASPER R	03/28/2017	54.75
436694	PETRO CARD	03/28/2017	42,837.74
436695	PHILIPS MEDICAL SYSTEMS	03/28/2017	153.74
436696	PIONEER FARM MUSEUM	03/28/2017	100.00
436697	PITNEY BOWES POSTAGE BY PHONE	03/28/2017	7,938.33
436698	PITNEY BOWES PRESORT SERVICES	03/28/2017	8,000.00
436699	POWELL, ANNA T	03/28/2017	20.00
436700	PROCARE THERAPY INC	03/28/2017	1,139.94
436701	PROGRESSUS THERAPY INC	03/28/2017	4,740.42
436702	PUBLIC CONSULTING GROUP INC	03/28/2017	9,977.12
436703	PUGET SOUND ENERGY ELECTRIC	03/28/2017	158,556.35
436704	Vendor Continued Check	03/28/2017	0.00
436705	PUGET SOUND ENERGY NAT GAS	03/28/2017	37,164.40
436706	PUGET SOUND INSTRUMENTS	03/28/2017	295.47
436707	PUYALLUP SCHOOL DIST	03/28/2017	74,265.11
436708	RENAISSANCE LEARNING INC	03/28/2017	27.93
436709	RESCUE ROOTER	03/28/2017	332.71
436710	Vendor Continued Check	03/28/2017	0.00
436711	REXEL INC	03/28/2017	2,254.42
436712	RIDDELL ALL AMERICAN SPORTS CO	03/28/2017	10,928.62
436713	RODDA PAINT CO	03/28/2017	590.16

Check Nbr	Vendor Name	Check Date	Check Amount
436714	ROGERS MACHINERY COMPANY INC	03/28/2017	555.58
436715	SAGE PUBLICATIONS INC	03/28/2017	2,245.00
436716	SANDRI, RENELL R	03/28/2017	11.00
436717	SANFORD, SCHARISHA M	03/28/2017	267.07
436718	SCHETKY NW SALES INC	03/28/2017	755.57
436719	SIMON, TIER E	03/28/2017	555.87
436720	SIX ROBBLEES INC	03/28/2017	1,752.40
436721	SOLIANT HEALTH	03/28/2017	4,801.50
436722	SONITROL PACIFIC	03/28/2017	516.00
436723	SOUND PUBLISHING INC	03/28/2017	82.88
436724	SPECIAL EDUCATION INNOVATIONS	03/28/2017	975.00
436725	SPRAGUE ISRAEL GILES INC	03/28/2017	4,189.50
436726	STANSELL GLASS INC	03/28/2017	436.91
436727	STATE AUDITOR'S OFFICE LEGIS B	03/28/2017	16,099.11
436728	STERICYCLE WASTE SERVICES	03/28/2017	10.36
436729	TACOMA SCREW PRODUCTS INC	03/28/2017	570.31
436730	TEC EQUIPMENT INC	03/28/2017	75.95
436731	TED BROWN MUSIC COMPANY	03/28/2017	1,840.70
436732	TESLA ELECTRIC LLC	03/28/2017	1,766.32
436733	TESLA ELECTRIC LLC	03/28/2017	1,560.26
436734	TOMLINSON, PAMELA	03/28/2017	1,022.26
436735	TOP ECHELON CONTRACTING INC	03/28/2017	4,114.35
436736	UNIFIRST CORPORATION	03/28/2017	1,069.82
436737	UNIVERSAL LANGUAGE SERVICE INC	03/28/2017	1,355.50
436738	USA MOBILITY WIRELESS INC	03/28/2017	337.20

Check Nbr	Vendor Name	Check Date	Check Amount
436739	VASQUEZ, CHRISTINA	03/28/2017	142.95
436740	WASH CEDAR & SUPPLY CO	03/28/2017	138.94
436741	WASHINGTON, MICHEL'LE CHARRISE	03/28/2017	3.00
436742	WELCOME RAMP SYSTEMS INC	03/28/2017	161.65
436743	WEST COAST PLATEN COMPANY	03/28/2017	195.06
436744	WESTERN EQUIPMENT DISTRIBUTORS	03/28/2017	931.09
436745	WESTERN WASH WRESTLING OFFICIA	03/28/2017	401.25
436746	WHEELER, JANET L	03/28/2017	169.78
436747	WILBUR ELLIS COMPANY LLC	03/28/2017	1,627.02
436748	WILSON, RYAN	03/28/2017	125.97
436749	WORLEY, CURTIS	03/28/2017	5.00
436750	XYTRONIX RESEARCH & DESIGN INC	03/28/2017	186.48
436751	ADI GLOBAL DISTRIBUTION	03/28/2017	1,326.09
436752	BLRB ARCHITECTS PS	03/28/2017	17,075.00
436753	CDW GOVERNMENT INC	03/28/2017	1,052.62
436754	DELL MARKETING LP % DELL USA L	03/28/2017	59,605.79
436755	DEPT OF REVENUE LEASEHOLD TAX	03/28/2017	1,681.00
436756	EMERSON, LEO S	03/28/2017	7,200.00
436757	FIRST AMERICAN TITLE INSURANCE	03/28/2017	767.20
436758	GOVCONNECTION INC	03/28/2017	452.68
436759	INSLEE BEST DOEZIE & RYDER PS	03/28/2017	235.00
436760	IPEVO INC	03/28/2017	1,818.90
436761	KONICA MINOLTA BUSINESS SOLUTI	03/28/2017	11,537.22
436762	MICRO COMPUTER SYSTEMS INC	03/28/2017	2,385.74
436763	OAK HILL CONSTRUCTION LLC	03/28/2017	26,463.58

Check Nbr	Vendor Name	Check Date	Check Amount
436764	PARAMETRIX INC	03/28/2017	8,852.25
436765	PERKINS COIE LLP	03/28/2017	2,680.47
436766	PUGET SOUND ENERGY ELECTRIC	03/28/2017	492.00
436767	TELDATA SYSTEMS INC	03/28/2017	4,328.83
436768	TESLA ELECTRIC LLC	03/28/2017	733.65
436769	WELSH COMMISSIONING GROUPS INC	03/28/2017	4,095.00
436770	XYTRONIX RESEARCH & DESIGN INC	03/28/2017	526.70
436771	AREA 5 DECA	03/28/2017	462.00
436772	BELIEVE KIDS/BELEIVE PRODUCTIO	03/28/2017	6,810.40
436773	BETHEL SCHOOL DISTRICT	03/28/2017	210.00
436774	BOBADILLA, GABRIELA	03/28/2017	30.00
436775	CENTRAL WASHINGTON UNIVERSITY	03/28/2017	700.00
436776	CISPUS LEARNING CENTER	03/28/2017	519.20
436777	COPIERS NORTHWEST	03/28/2017	7,672.67
436778	Vendor Continued Check	03/28/2017	0.00
436779	COSTCO	03/28/2017	6,345.39
436780	CRUZ, KAITLYN SHERLYN	03/28/2017	35.00
436781	DURANGO HIGH SCHOOL	03/28/2017	600.00
436782	EK BEVERAGE COMPANY	03/28/2017	359.50
436783	EPD SERVICES INC	03/28/2017	209.00
436784	HERFF JONES YEAR BOOK PAYMENTS	03/28/2017	15,978.58
436785	IDEAWORKS NW	03/28/2017	7,747.26
436786	IMAGE MASTERS INC	03/28/2017	247.47
436787	KIWANIS CLUB OF THE VALLEY	03/28/2017	253.00
436788	LAKE TAPPS VOLLEYBALL CLUB	03/28/2017	435.00

Check Nbr	Vendor Name	Check Date	Check Amount
436789	LONGMIRE, LISA	03/28/2017	85.00
436790	MUNOZ, MARIA ROMERO	03/28/2017	20.00
436791	PACIFIC WELDING SUPPLIES	03/28/2017	49.00
436792	PEREZ, IRENE	03/28/2017	300.00
436793	SEATTLE ART MUSEUM	03/28/2017	40.00
436794	SHEARER, EMILY	03/28/2017	870.30
436795	SILVER CLOUD INN BELLEVUE	03/28/2017	727.60
436796	SNOWFLAKE DESIGNS	03/28/2017	722.50
436797	SPECIALTY FROZEN DISTIBUTING	03/28/2017	240.00
436798	SUMNER HIGH SCHOOL	03/28/2017	810.00
436799	TC SPAN AMERICA	03/28/2017	1,173.57
436800	TRIPLE T TROPHY	03/28/2017	813.04
436801	UNIVERSAL ATHLETIC SERVICE INC	03/28/2017	694.99
436802	VALDEZ, KAYLYN M	03/28/2017	41.44
436803	WASH INTERSCHOLASTIC ACTIVITIE	03/28/2017	75.00
436804	WE HEART WEDDINGS	03/28/2017	400.00
436805	WESTERN WASH WRESTLING OFFICIA	03/28/2017	1,031.25
209	Computer	Check(s) For a Total of	882,990.53

0	Manual	Checks For a Total of	0.00
0	Wire Transfer	Checks For a Total of	0.00
0	ACH	Checks For a Total of	0.00
209	Computer	Checks For a Total of	882,990.53
Total For 209 Manual, Wire Tran, ACH & Computer Checks			882,990.53
Less 0	Voided	Checks For a Total of	0.00
Net Amount			882,990.53

F U N D S U M M A R Y

Fund	Description	Balance Sheet	Revenue	Expense	Total
10	General Fund	14,587.39	374.72	658,010.54	672,972.65
20	Capital Projects	-172.80	0.00	153,482.52	153,309.72
40	ASB Fund	0.00	420.00	56,288.16	56,708.16

The following vouchers, as audited and certified by the Auditing Officer as required by RCW 42.24.080, and those expense reimbursement claims certified as required by RCW 42.24.090, are approved for payment. Those payments have been recorded on this listing which has been made available to the board.

As of March 28, 2017, the board, by a _____ vote, approves payments, totaling \$47,018.72. The payments are further identified in this document.

Total by Payment Type for Cash Account, US Bank Wire Transfers:
Wire Transfer Payments 201600348 through 201600369, totaling \$47,018.72

Secretary _____	Board Member _____
Board Member _____	Board Member _____
Board Member _____	Board Member _____

Check Nbr	Vendor Name	Check Date	Check Amount
201600348	GOSNEY MOTOR PARTS INC	03/27/2017	2,199.73
201600357	UNITED PARCEL SERVICE	03/27/2017	230.88
201600358	LES SCHWAB TIRE CENTER	03/27/2017	518.26
201600359	OFFICE DEPOT INC ACCT#8011 073	03/27/2017	318.45
201600360	STAPLES BUSINESS ADVANTAGE	03/27/2017	1,911.05
201600361	KING COUNTY DIRECTORS ASSN	03/27/2017	8,930.37
201600363	AT & T	03/27/2017	142.90
201600364	CEDAR GROVE ORGANICS RECYCLING	03/27/2017	3,136.75
201600365	CITY OF AUBURN UTILITIES	03/27/2017	20,327.81
201600366	REPUBLIC SERVICES #176	03/27/2017	3,980.40
201600367	VERIZON WIRELESS	03/27/2017	0.94
201600368	DK CUSTOM INK	03/27/2017	160.00
201600369	WASH DECA INC	03/27/2017	5,161.18

13 Wire Transfer Check(s) For a Total of 47,018.72

0	Manual	Checks For a Total of	0.00
13	Wire Transfer	Checks For a Total of	47,018.72
0	ACH	Checks For a Total of	0.00
0	Computer	Checks For a Total of	0.00
Total For 13	Manual, Wire Tran, ACH & Computer	Checks	47,018.72
Less 0	Voided	Checks For a Total of	0.00
		Net Amount	47,018.72

F U N D S U M M A R Y

Fund	Description	Balance Sheet	Revenue	Expense	Total
10	General Fund	6,921.14	0.00	34,776.40	41,697.54
40	ASB Fund	0.00	0.00	5,321.18	5,321.18

The following vouchers, as audited and certified by the Auditing Officer as required by RCW 42.24.080, and those expense reimbursement claims certified as required by RCW 42.24.090, are approved for payment. Those payments have been recorded on this listing which has been made available to the board.

As of March 28, 2017, the board, by a _____ vote, approves payments, totaling \$292,249.46. The payments are further identified in this document.

Total by Payment Type for Cash Account, AP Direct Dep Settlement Accou:
ACH Numbers 161701524 through 161701633, totaling \$292,249.46

Secretary _____	Board Member _____
Board Member _____	Board Member _____
Board Member _____	Board Member _____

Check Nbr	Vendor Name	Check Date	Check Amount
161701524	Vendor Continued Check	03/28/2017	0.00
161701525	Vendor Continued Check	03/28/2017	0.00
161701526	Vendor Continued Check	03/28/2017	0.00
161701527	Vendor Continued Check	03/28/2017	0.00
161701528	AMAZON CAPITAL SERVICES INC	03/28/2017	2,829.78
161701529	ANDERSON, AMY LYNN	03/28/2017	68.49
161701530	ANDRADE-ARRIETA, APRIL SUNSHIN	03/28/2017	460.10
161701531	AUBURN SCHOOL DIST REVOLVING F	03/28/2017	37.87
161701532	BARKER, CAROL JEAN	03/28/2017	325.08
161701533	BELL, TARA JO	03/28/2017	500.00
161701534	BERNASCONI, JANICE S	03/28/2017	78.36
161701535	BLOOM, JANET MARIE	03/28/2017	40.00
161701536	BUCCI, TIFFANY JEAN	03/28/2017	78.50
161701537	BURT, TIFFANY ANN	03/28/2017	40.93
161701538	CALLAHAM, CHRISTINE MARIE	03/28/2017	181.67
161701539	CAMPBELL-AIKENS, JANIS GAIL	03/28/2017	226.76
161701540	CHANDLER, HEATHER ANN	03/28/2017	43.86

Check Nbr	Vendor Name	Check Date	Check Amount
161701541	CLOUSER, JENNIFER LYNN	03/28/2017	129.45
161701542	COLLINS, RACHEL	03/28/2017	24.46
161701543	CUMBERLAND THERAPY SERVICES LL	03/28/2017	7,650.00
161701544	DANIELS, DENISE CLARISE	03/28/2017	199.02
161701545	ENQUIST, ROBIN RENEE	03/28/2017	15.25
161701546	FAWVER, RICHARD ALLEN	03/28/2017	25.89
161701547	FOOD SERVICES OF AMERICA *	03/28/2017	113,414.25
161701548	FOSTER, RYAN BRENT	03/28/2017	58.62
161701549	GARY, DEBRA O	03/28/2017	165.80
161701550	GIBSON-MYERS, ELIZABETH ANN	03/28/2017	26.22
161701551	HARTLEY, HEATHER MARIE	03/28/2017	500.00
161701552	HARTNESS, ADRIANE LOUISE	03/28/2017	7,450.00
161701553	HEMBREE JR, JOHN WALTER	03/28/2017	50.00
161701554	HERING-PHILLIPS, CAROL S	03/28/2017	93.22
161701555	HIDALGO, OFELIA ESTELA	03/28/2017	13.80
161701556	HILLS, CHELSEA ANNE	03/28/2017	500.00
161701557	HOLBROOK, DEANNA LYNN	03/28/2017	399.00
161701558	HOSTETTER, JAYME LYNN	03/28/2017	63.43
161701559	IBBETSON THERAPEUTIC SERVICES	03/28/2017	7,860.38
161701560	JACOBSMA, AMANDA CHRISTINE	03/28/2017	109.41
161701561	KIILSGAARD, LESLIE LOUISE	03/28/2017	141.03
161701562	LEASE, KYLE GARETT	03/28/2017	46.71
161701563	LEITZKE, STACY JO	03/28/2017	500.00
161701564	LEVERTON, ANDREA LYNN	03/28/2017	500.00
161701565	MARQUIS, TAMESHA L.	03/28/2017	190.00

Check Nbr	Vendor Name	Check Date	Check Amount
161701566	MASON, LISA J	03/28/2017	438.38
161701567	MCCALL, ELIZABETH ANN	03/28/2017	55.11
161701568	MCKEEHAN, JANALYN RICHINS	03/28/2017	47.08
161701569	MCSWAIN, CHRISTINA ELAINE	03/28/2017	500.00
161701570	MEDINA, WENDY OLIVARES	03/28/2017	330.00
161701571	MERILO, KATHERINE JANSON	03/28/2017	500.00
161701572	MILLS GOLDBERG, AMY L	03/28/2017	51.48
161701573	MILLS, TAYLOR ROSE	03/28/2017	200.00
161701574	MINTON, KRISTI MIKIYO TSUMURA	03/28/2017	51.01
161701575	MOYD, CHERYL CE	03/28/2017	273.22
161701576	NESPER, SHERRI L	03/28/2017	54.87
161701577	OREMLAND, CHARITY BETH	03/28/2017	215.00
161701578	RAMIREZ-DILLARD, REBECCA A	03/28/2017	9.63
161701579	RAPHAEL, KATHLEEN L	03/28/2017	73.72
161701580	RIOLA, LINDA SUE	03/28/2017	50.00
161701581	ROGERS, STACEY KATHLEEN O.	03/28/2017	13.03
161701582	RUDOLPH, JEANNE MARIA	03/28/2017	40.00
161701583	SHERER, KATHRYN ANN	03/28/2017	242.93
161701584	SHU-MINUTOLI, KAREN	03/28/2017	57.25
161701585	SKAGEN, PATRICIA ANN	03/28/2017	399.00
161701586	SPEER, CHELSEY	03/28/2017	64.99
161701587	Vendor Continued Check	03/28/2017	0.00
161701588	SUNBELT STAFFING LLC	03/28/2017	23,861.25
161701589	Vendor Continued Check	03/28/2017	0.00
161701590	Vendor Continued Check	03/28/2017	0.00

Check Nbr	Vendor Name	Check Date	Check Amount
161701591	Vendor Continued Check	03/28/2017	0.00
161701592	Vendor Continued Check	03/28/2017	0.00
161701593	Vendor Continued Check	03/28/2017	0.00
161701594	Vendor Continued Check	03/28/2017	0.00
161701595	Vendor Continued Check	03/28/2017	0.00
161701596	US BANK CORP PROCUREMENT CARD	03/28/2017	57,600.17
161701597	US BANK CORP TRAVEL PAYMENT	03/28/2017	2,627.70
161701598	Vendor Continued Check	03/28/2017	0.00
161701599	Vendor Continued Check	03/28/2017	0.00
161701600	Vendor Continued Check	03/28/2017	0.00
161701601	US BANK CTE P CARDS	03/28/2017	11,032.16
161701602	WEIDE, SCOTT ELWYN	03/28/2017	181.25
161701603	WILSON, HEIDI	03/28/2017	12.95
161701604	WOLF, SU KIM	03/28/2017	6.00
161701605	US BANK CORP PROCUREMENT CARD	03/28/2017	213.90
161701606	AMAZON CAPITAL SERVICES INC	03/28/2017	490.02
161701607	AUBURN SCHOOL DIST REVOLVING F	03/28/2017	100.00
161701608	Vendor Continued Check	03/28/2017	0.00
161701609	AUBURN SENIOR HIGH IMPREST	03/28/2017	3,605.00
161701610	CRATER, LAUREN BREANNE	03/28/2017	25.15
161701611	DUNAWAY, EDDIE L	03/28/2017	404.38
161701612	FAGER, ELSA TOPACIO	03/28/2017	185.36
161701613	Vendor Continued Check	03/28/2017	0.00
161701614	Vendor Continued Check	03/28/2017	0.00
161701615	Vendor Continued Check	03/28/2017	0.00

Check Nbr	Vendor Name	Check Date	Check Amount
161701616	FOOD SERVICES OF AMERICA	03/28/2017	7,091.63
161701617	HERNDON, JENNIFER RAE	03/28/2017	39.10
161701618	HYDE, SHANNON LEA	03/28/2017	51.30
161701619	LOCKE, ROBERTA JEAN	03/28/2017	35.97
161701620	PIZZA TIME	03/28/2017	1,284.40
161701621	RASMUSSEN, DAWN LORRAINE	03/28/2017	135.74
161701622	ROCKEY, CAREY V	03/28/2017	219.00
161701623	RODRIGUEZ, JESSE ANN	03/28/2017	94.91
161701624	ROWE, ALESHA MARIE	03/28/2017	18.10
161701625	THOMAS, JANA DARLENE	03/28/2017	237.09
161701626	Vendor Continued Check	03/28/2017	0.00
161701627	Vendor Continued Check	03/28/2017	0.00
161701628	Vendor Continued Check	03/28/2017	0.00
161701629	Vendor Continued Check	03/28/2017	0.00
161701630	US BANK CORP PROCUREMENT CARD	03/28/2017	21,210.06
161701631	Vendor Continued Check	03/28/2017	0.00
161701632	US BANK CORP TRAVEL PAYMENT	03/28/2017	11,890.49
161701633	US BANK CORP PROCUREMENT CARD	03/28/2017	892.34

110 ACH

Check(s) For a Total of

292,249.46

0	Manual	Checks For a Total of	0.00
0	Wire Transfer	Checks For a Total of	0.00
110	ACH	Checks For a Total of	292,249.46
0	Computer	Checks For a Total of	0.00
Total For 110	Manual, Wire Tran, ACH & Computer	Checks	292,249.46
Less 0	Voided	Checks For a Total of	0.00
	Net Amount		292,249.46

F U N D S U M M A R Y

Fund	Description	Balance Sheet	Revenue	Expense	Total
10	General Fund	-1,273.60	0.00	245,299.12	244,025.52
20	Capital Projects	0.00	0.00	213.90	213.90
40	ASB Fund	-576.76	0.00	47,694.46	47,117.70
70	Private Purpose	-3.61	0.00	895.95	892.34

AUBURN SCHOOL DISTRICT NO. 408

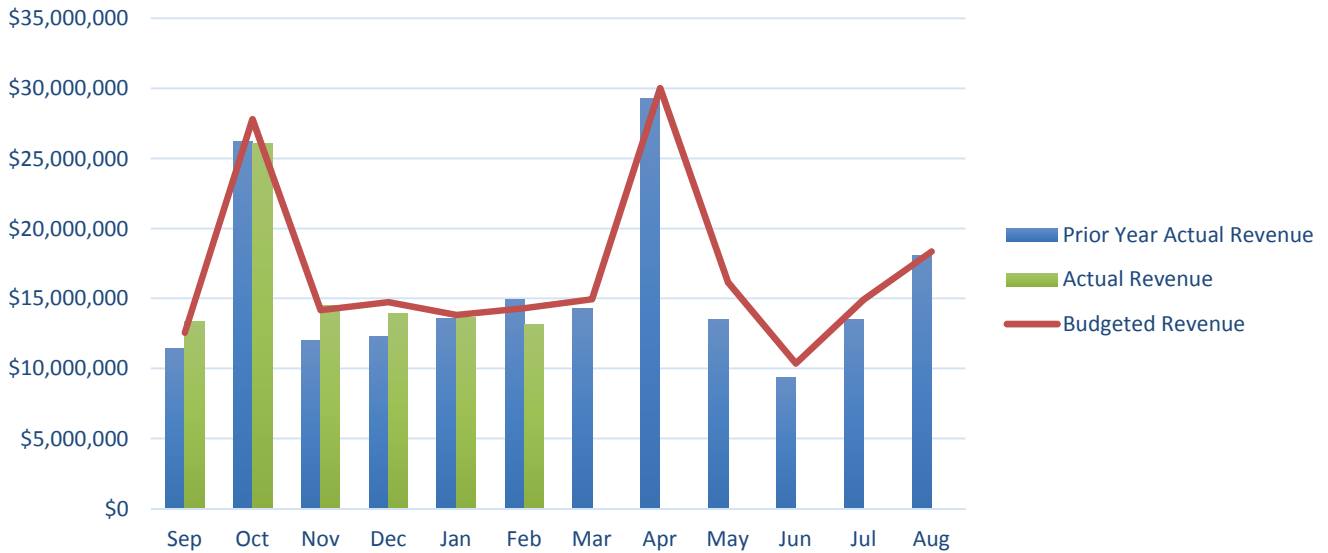
FINANCIAL STATEMENTS
FOR
FEBRUARY 2017

AUBURN SCHOOL DISTRICT NO. 408
MONTHLY FINANCIAL REPORTS
TABLE OF CONTENTS

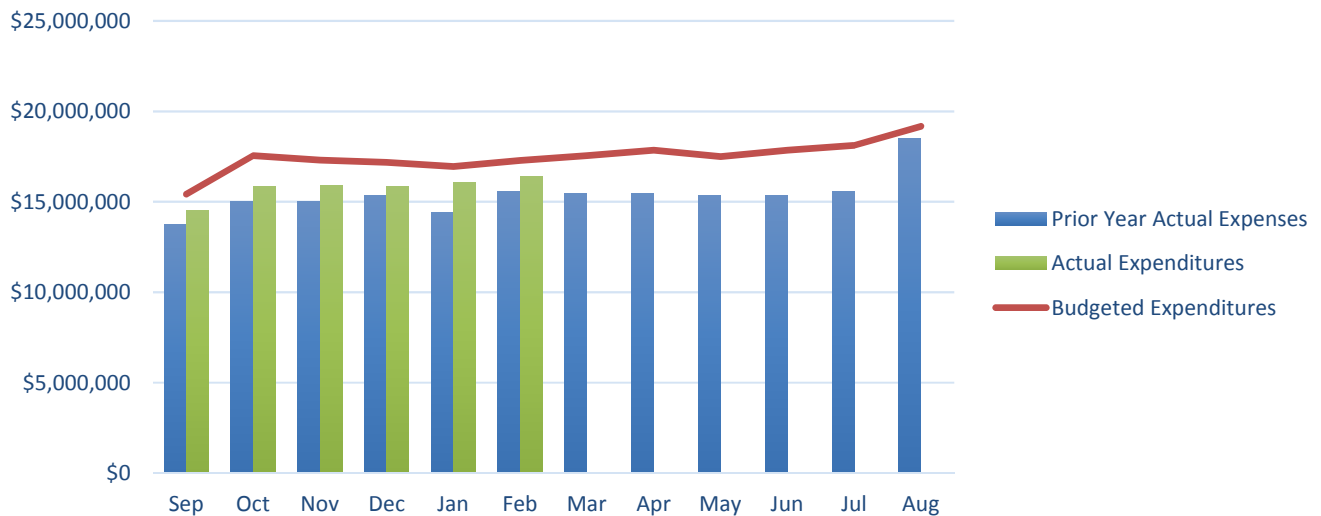
- I. Revenue and Expenditure Comparison
- II. Combined Balance Sheet
 - A. Governmental Funds
 - B. Trust Funds and Account Groups
- III. Budget Status Reports
 - A. General Fund
 - B. Transportation Vehicle Fund
 - C. Capital Projects Fund
 - D. Debt Service Fund
 - E. ASB Fund
 - 1. High Schools
 - 2. Middle Schools
- IV. Private Purpose Trust Fund Statement
- V. NBN Employee Benefits Trust Fund Statement
- VI. Local Grants

AUBURN SCHOOL DISTRICT No. 408
GENERAL FUND
2016 - 2017

Monthly Revenue Comparison



Monthly Expenditure Comparison



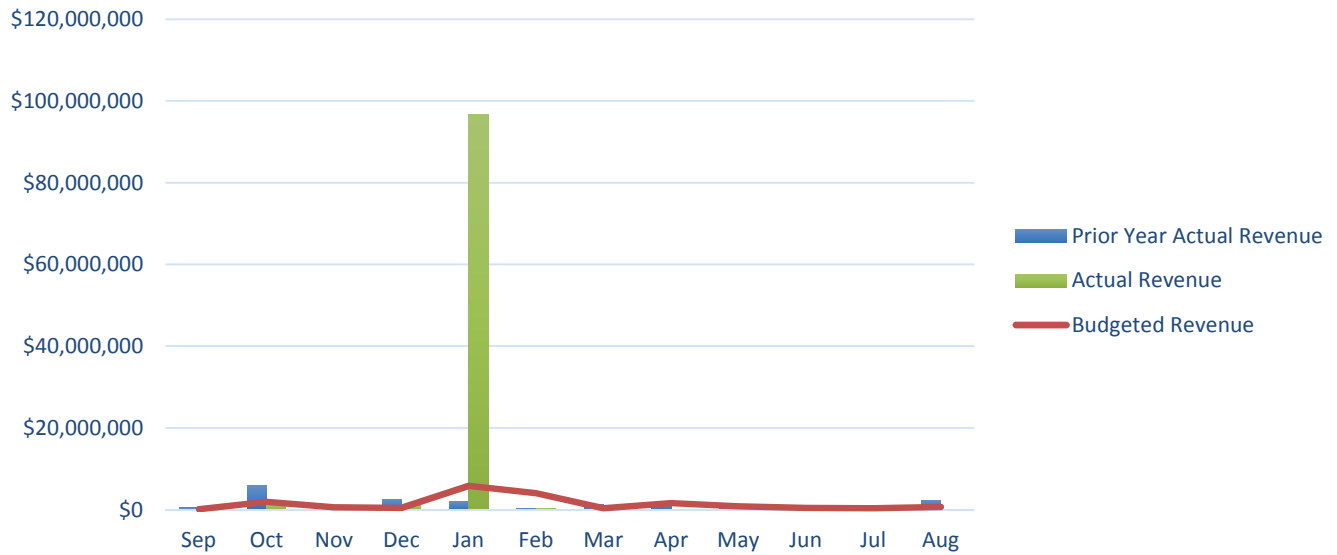
*A six year historical average has been used to calculate the monthly Budget for both tables above.

AUBURN SCHOOL DISTRICT No. 408

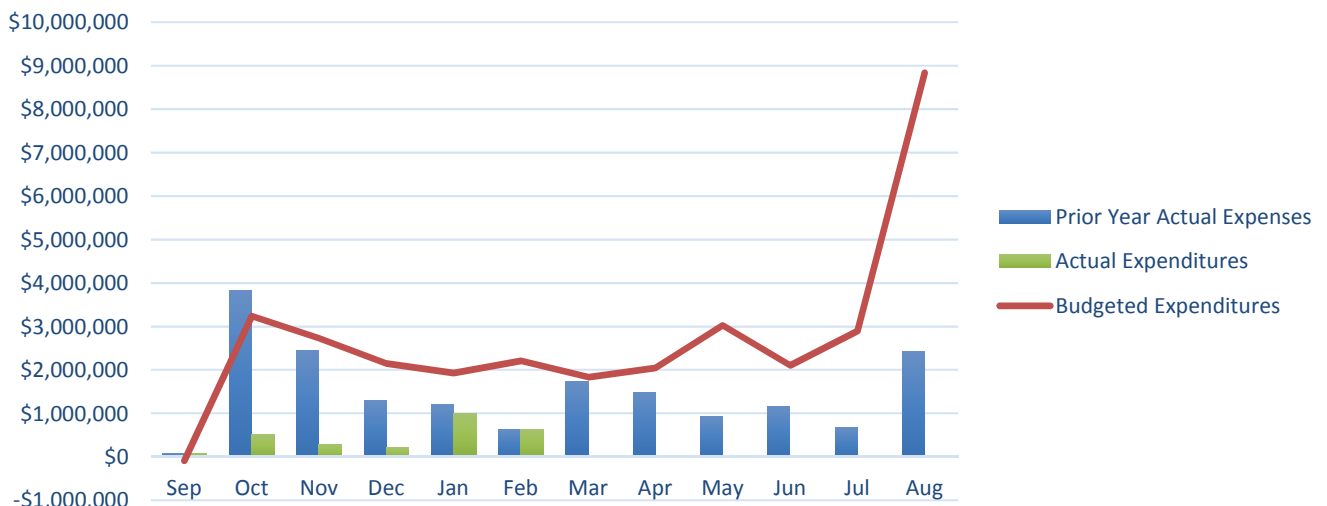
CAPITAL PROJECTS

2016 - 2017

Monthly Revenue Comparison



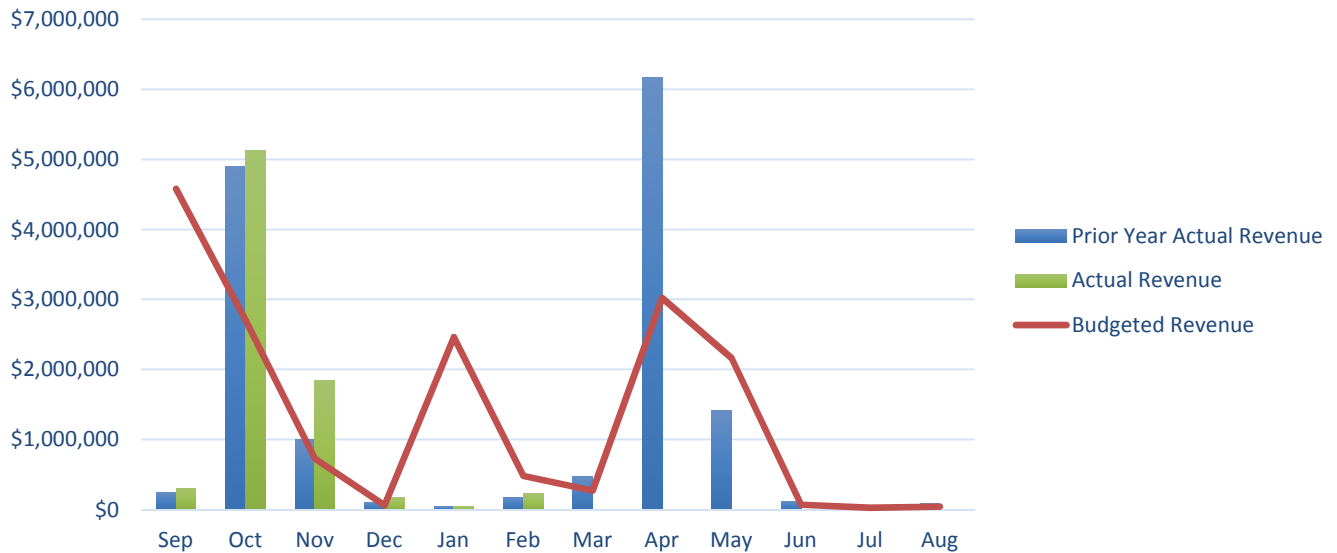
Monthly Expenditure Comparison



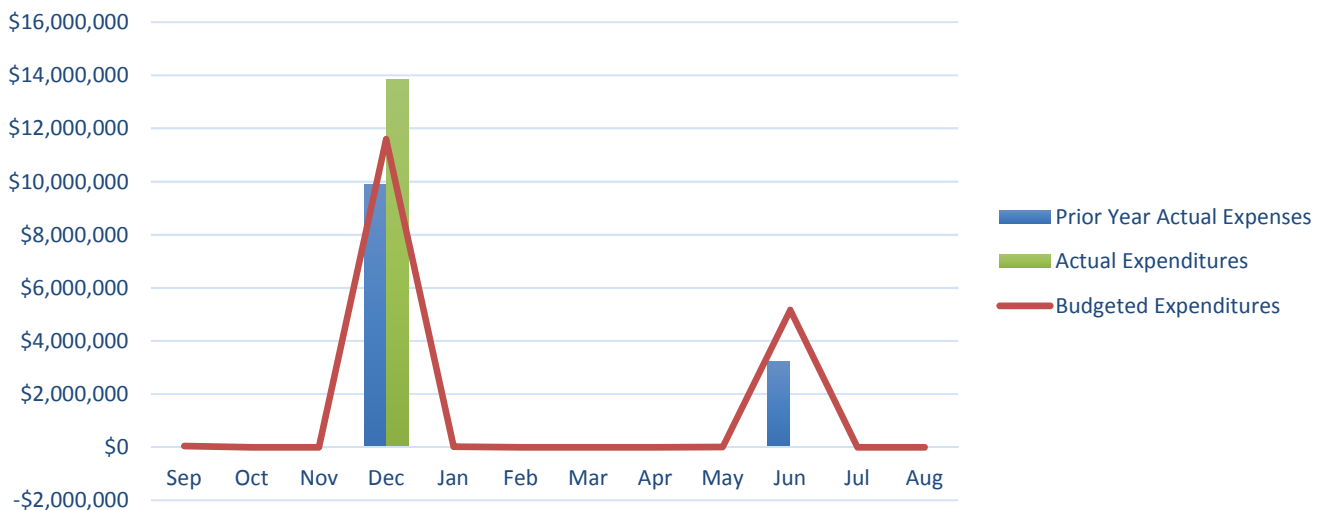
*A six year historical average has been used to calculate the monthly Budget for both tables above.

AUBURN SCHOOL DISTRICT No. 408
DEBT SERVICE
2016 - 2017

Monthly Revenue Comparison



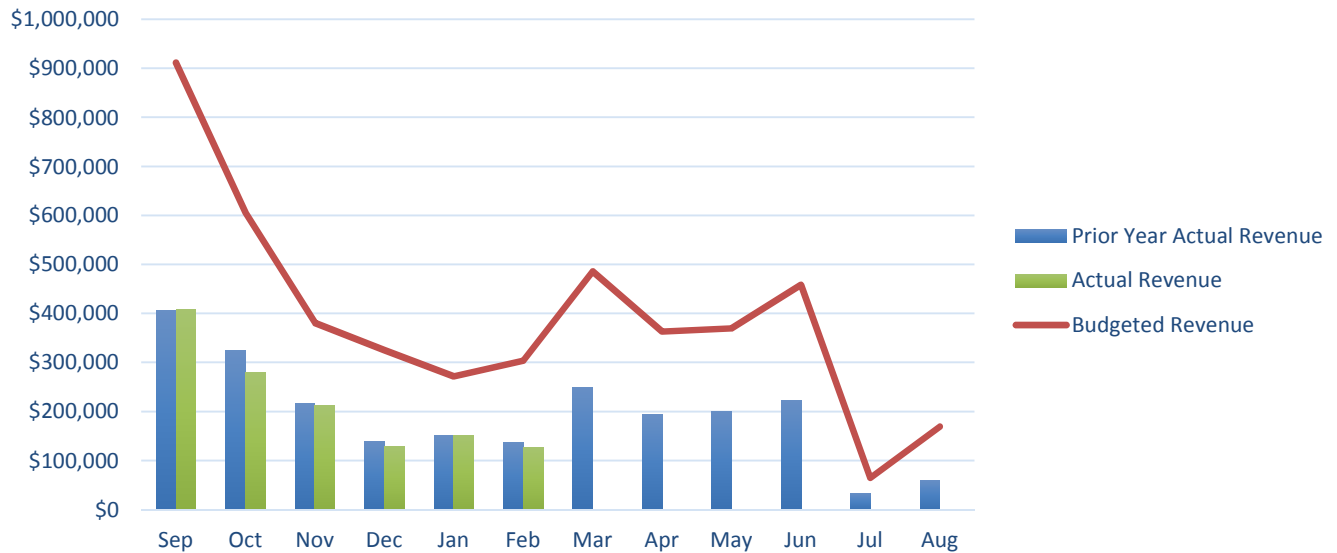
Monthly Expenditure Comparison



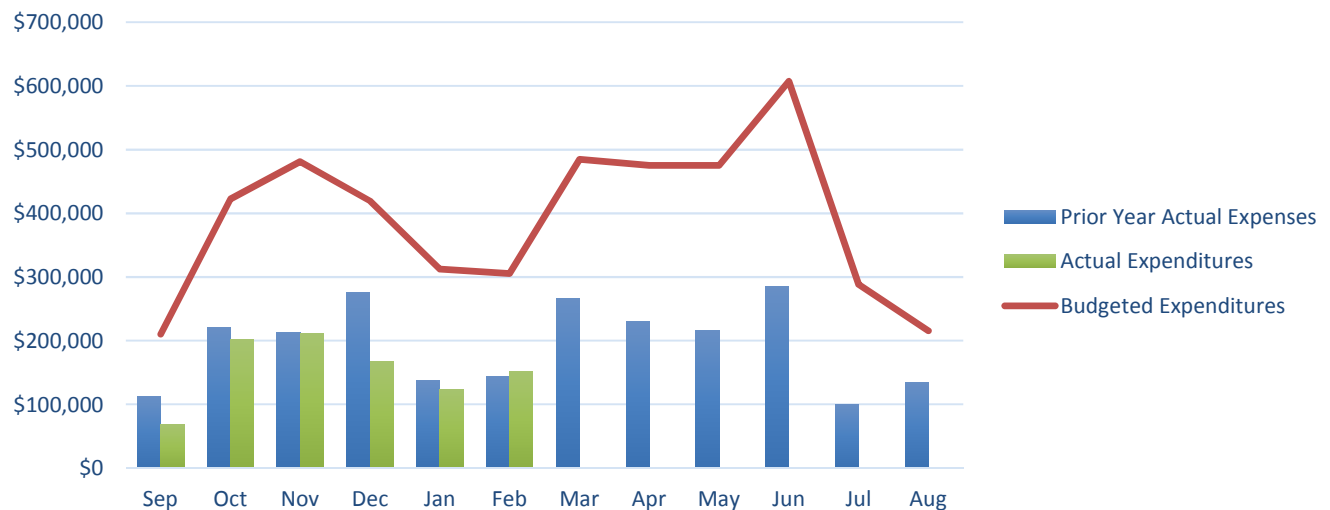
*A six year historical average has been used to calculate the monthly Budget for both tables above.

AUBURN SCHOOL DISTRICT No. 408
ASB FUND
2016 - 2017

Monthly Revenue Comparison



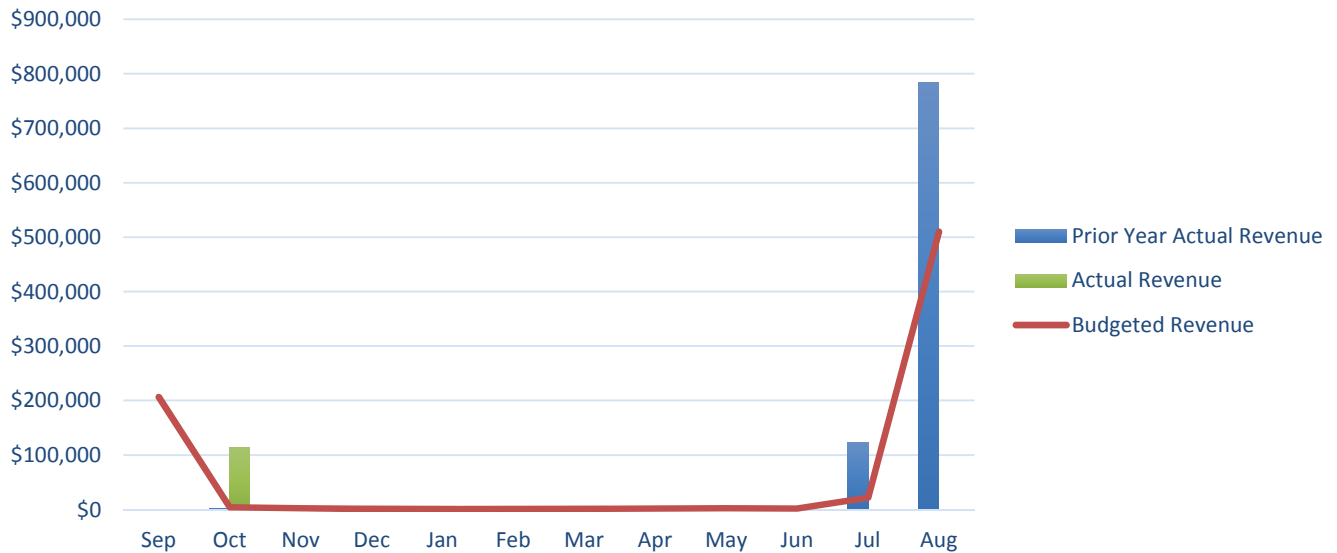
Monthly Expenditure Comparison



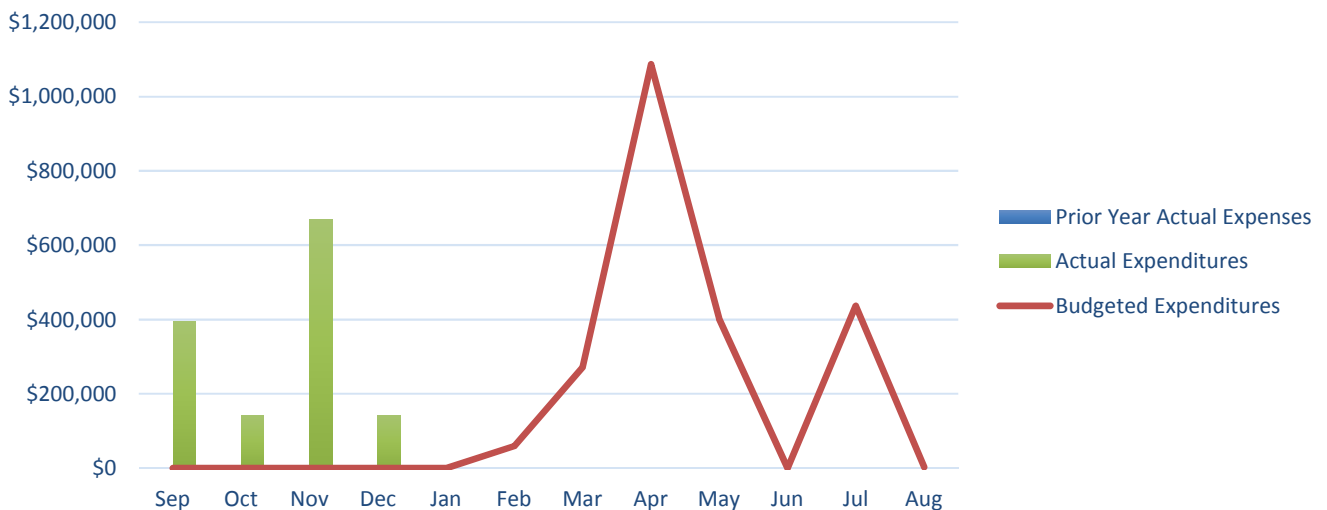
*A six year historical average has been used to calculate the monthly Budget for both tables above.

AUBURN SCHOOL DISTRICT No. 408
TRANSPORTATION FUND
2016 - 2017

Monthly Revenue Comparison



Monthly Expenditure Comparison



*A six year historical average has been used to calculate the monthly Budget for both tables above.

AUBURN SCHOOL DISTRICT NO. 408
BALANCE SHEETS - GOVERNMENTAL FUNDS
February 28, 2017

	GENERAL	TRANSPORT VEHICLE	CAPITAL PROJECTS	DEBT SERVICE	ASB
ASSETS					
Cash and cash equivalents	13,811,621	1,764,674	140,154,738	1,672,024	1,843,142
Restricted Cash	16,982	2,035	69,544	22,041	3,213
Property taxes receivable	41,438,635	-48	3,785,671	29,032,008	
Accounts receivable	203,657				0
Interest receivable	0	0	1	0	0
Due from other funds	0	0	0	0	0
Due from other governments	0		139,209		
Inventory of supplies	330,416				
Prepays	0				0
Total Assets	55,801,312	1,766,660	144,149,161	30,726,073	1,846,355
LIABILITIES and EQUITY					
Liabilities:					
Accounts payable	46,058	0	33,677		12,317
Estimated Unemployment Payable	-9,883				
Due to other governments	8,070	964	0	10,488	1,529
Due to other funds	0		4,054		0
Deferred revenue	41,532,720	-48	3,787,176	29,032,008	0
Total Liabilities	41,576,964	916	3,824,908	29,042,496	13,845
Equity:					
Non Spendable Fund Bal--Inven	395,350				251
Restricted for Carryovers	389,618				
Restricted for Food Services	2,533,213				
Restricted from Bond Proceeds			101,269,759		
Restricted from Levy Proceeds			6,562,632		
Restricted from State Proceeds			21,835,336		
Restricted from Impact Fees			448,536		
Restricted for Fund Purpose		2,991,760			1,832,258
Restricted to Debt Service				1,655,164	
Assigned to Contingencies	300,000				
Assigned to Other Purposes	1,800,000				
Assigned To Fund Purposes		-1,226,016	10,207,991	28,413	
Unassigned Fund Balance	8,806,167				
Total Equity	14,224,348	1,765,744	140,324,253	1,683,577	1,832,509
Total Liabilities and Equity	55,801,312	1,766,660	144,149,161	30,726,073	1,846,355

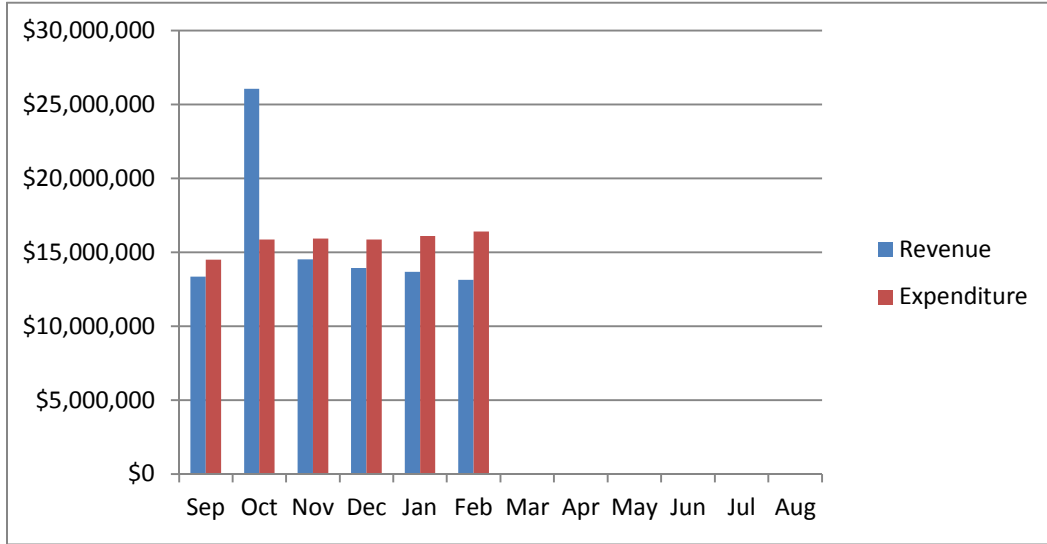
AUBURN SCHOOL DISTRICT NO. 408
BALANCE SHEETS - TRUST FUNDS AND ACCOUNT GROUPS
February 28, 2017

	TRUST FUNDS		ACCOUNT GROUPS	
	PRIV PURP TRUST	NBN EMPLOY BENEFITS	GENERAL FIXED ASSETS	GENERAL LONG-TERM DEBT
ASSETS				
Cash and cash equivalents	584,185	178,385		
Restricted Cash	1,512	442		
Due From Other Funds	0	0		
Accounts receivable				
Interest receivable	0	0		
Fixed assets			391,983,760	
Other debits:				
Amount available in Debt Service Fund				1,683,577
Amount to be provided for retirement of general long-term obligations				107,003,436
Total Assets	585,697	178,827	391,983,760	108,687,013
LIABILITIES and EQUITY				
Liabilities:				
Accounts Payable	0	3,962		
Compensated absences payable				3,737,013
Due to other governments	719	210		
Due To Other Funds		0		
General obligation bonds payable				104,950,000
Total Liabilities	719	4,172	0	108,687,013
Equity:				
Investment in general fixed assets			391,983,760	
Fund balances:				
Assigned To Fund Purposes	584,978	174,655		
Total Equity	584,978	174,655	391,983,760	0
Total Liabilities and Equity	585,697	178,827	391,983,760	108,687,013

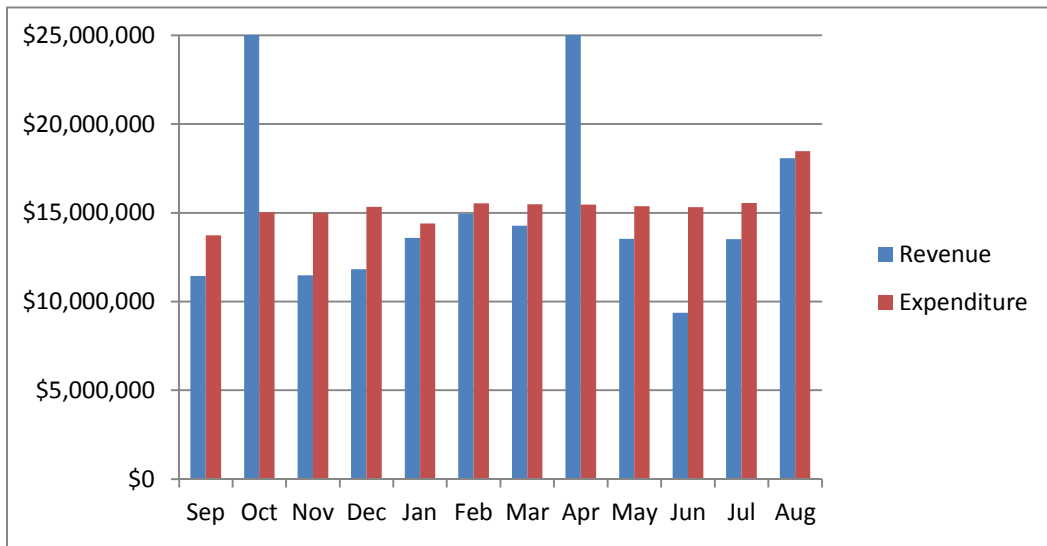
Auburn School District No. 408 General Fund Budget Status Summary							
	REVENUE			EXPENDITURES			FUND BALANCE
Fiscal Year 2016 - 17	Average Cum %	Actual Cum %	Actual Monthly	Average Cum %	Actual Cum %**	Monthly Amount	Beginning 14,186,101
September	6.61%	6.61%	13,355,981	6.91%	10.93%	14,497,803	13,044,279
October	19.50%	19.50%	26,063,463	14.47%	18.42%	15,849,158	23,258,584
November	26.67%	26.67%	14,507,532	22.06%	25.76%	15,919,984	21,846,131
December	33.56%	33.56%	13,924,260	29.62%	33.03%	15,847,592	19,922,799
January	40.32%	40.32%	13,661,847	37.29%	40.69%	16,092,747	17,491,898
February	46.81%	46.81%	13,134,958	45.11%	48.10%	16,402,508	14,224,348
March							
April							
May							
June							
July							
August							
			Revenue			Expenditure	Fund Balance
Anticipated - First Budget			202,175,757			209,728,203	6,447,554
Actual - At Fiscal Year End							
** Includes encumbrances.							
	REVENUE			EXPENDITURES			FUND BALANCE
Fiscal Year 2015 - 16	Average Cum %	Actual Cum %	Actual Monthly	Average Cum %	Actual Cum %**	Monthly Amount	Beginning 10,306,157
September	5.97%	5.97%	11,443,447	7.04%	11.20%	13,737,159	8,016,795
October	19.65%	19.65%	26,224,267	14.73%	19.06%	15,023,392	19,231,249
November	25.63%	25.63%	11,472,737	22.42%	26.38%	14,993,672	15,710,314
December	31.80%	32.11%	11,821,950	30.28%	33.87%	15,345,106	12,778,481
January	38.89%	39.40%	13,587,231	37.66%	41.10%	14,399,492	12,358,800
February	46.68%	47.19%	14,942,850	45.62%	48.82%	15,537,546	11,764,104
March	54.13%	54.64%	14,274,773	53.55%	56.79%	15,480,856	10,558,020
April	69.18%	69.69%	28,852,294	61.47%	64.34%	15,460,114	23,950,200
May	76.23%	76.99%	13,531,793	69.34%	72.07%	15,370,375	22,574,615
June	81.12%	81.88%	9,376,207	77.19%	79.81%	15,325,100	16,625,722
July	88.18%	88.93%	13,517,675	85.16%	87.68%	15,557,013	14,586,384
August	97.61%	98.36%	18,085,184	94.63%	94.63%	18,480,153	14,186,101
			Revenue			Expenditure	Fund Balance
Anticipated - First Budget			191,714,925			195,187,148	6,527,777
Actual - At Fiscal Year End			188,577,307			184,701,714	14,186,101
** Includes encumbrances.							
	REVENUE			EXPENDITURES			FUND BALANCE
Fiscal Year 2014 - 15	Average Cum %	Actual Cum %	Actual Monthly	Average Cum %	Actual Cum %**	Monthly Amount	Beginning 9,416,432
September	5.64%	5.63%	9,600,271	6.59%	11.23%	11,493,198	7,523,505
October	19.96%	19.93%	24,381,007	14.62%	18.99%	13,998,540	17,905,973
November	27.27%	26.57%	12,457,337	22.71%	26.78%	14,097,667	15,140,231
December	33.90%	33.18%	11,280,745	30.57%	34.44%	13,715,438	12,705,623
January	40.39%	39.91%	11,049,790	38.24%	42.20%	13,366,760	10,814,353
February	46.91%	46.82%	11,114,885	46.01%	49.17%	13,541,044	8,936,027
March	54.03%	54.20%	12,123,196	54.11%	54.11%	14,124,959	7,367,771
April	68.71%	69.23%	24,991,693	62.38%	64.91%	14,418,327	18,551,214
May	76.52%	77.04%	13,295,630	70.27%	72.61%	13,753,159	18,093,684
June	81.15%	81.97%	7,883,016	78.32%	80.67%	14,037,824	12,442,773
July	88.71%	89.74%	12,879,517	86.60%	88.58%	14,437,607	11,242,453
August	98.02%	99.05%	15,843,044	96.23%	96.22%	16,779,340	10,306,157
			Revenue			Expenditure	Fund Balance
Anticipated - First Budget			170,274,046				

AUBURN SCHOOL DISTRICT No. 408 GENERAL FUND

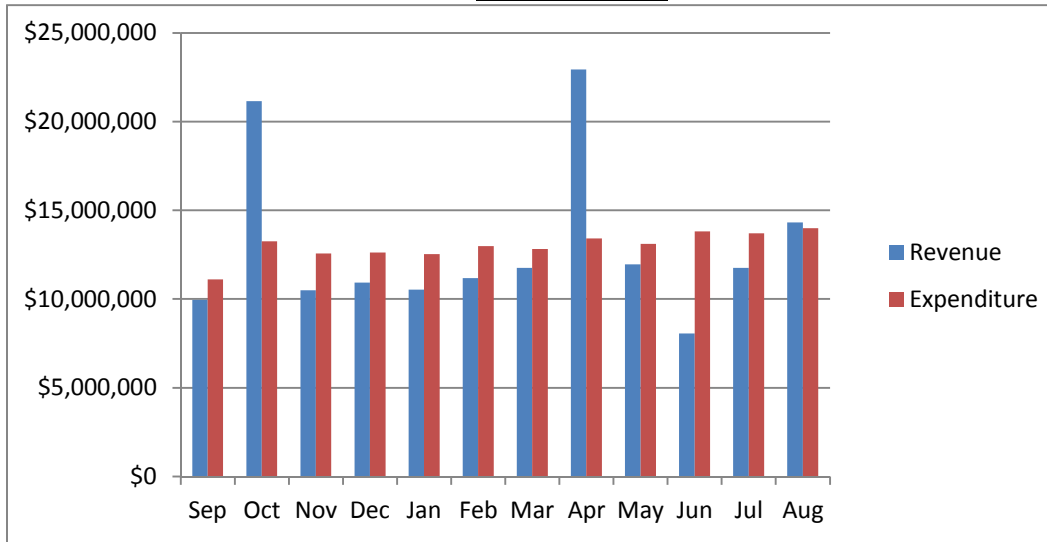
2016 - 17



2015 - 16



2014 - 15



Auburn School District No. 408
General Fund Budget Status
For the Month of February, 2017

	Annual Budget	Actual For Month	Total For Year	Encumbrance	Balance	Percent
TOTAL BEGINNING FUND BALANCE	\$ 14,000,000		14,186,101			
REVENUES AND OTHER FINANCING SOURCES						
1000 Local Taxes	39,373,979	333,336	18,423,351		20,950,629	46.79%
2000 Local Non-Tax	7,886,184	270,966	2,393,263		5,492,921	30.35%
3000 State, General Purpose	111,001,307	9,250,826	54,544,847		56,456,460	49.14%
4000 State, Special Purpose	26,653,428	2,279,017	13,265,499		13,387,929	49.77%
5000 Federal, General Purpose	26,383	-	-		26,383	0.00%
6000 Federal, Special Purpose	16,606,776	1,000,325	5,725,039		10,881,737	34.47%
7000 Revenues from Other District	525,000	-	286,814		238,186	54.63%
8000 Revenues from Other Agencies	102,700	-	7,490		95,210	7.29%
9000 Other Financing Sources	-	487	1,736		(1,736)	0.00%
Total Revenues & Other Finance Sources	202,175,757	13,134,958	94,648,039	-	107,527,718	46.81%
EXPENDITURES						
00 Regular Instruction	119,096,383	9,182,862	55,359,642	50,803,385	12,933,356	89.14%
10 Federal Stimulus	300,641	18,449	67,408	31,426	201,807	32.87%
20 Special Ed Instruction	25,460,957	2,381,335	12,178,649	11,205,478	2,076,830	91.84%
30 Vocational Instruction	6,840,420	551,054	3,276,681	3,111,739	451,999	93.39%
50&60 Compensatory Education	15,469,858	1,094,514	6,249,822	5,703,498	3,516,538	77.27%
70 Other Instructional Pgms	3,408,463	76,184	415,473	312,354	2,680,637	21.35%
80 Community Services	1,482,601	78,941	474,046	277,666	730,889	50.70%
90 Support Services	37,668,880	3,019,169	16,588,070	14,684,716	6,396,094	83.02%
Total Expenditures	209,728,203	16,402,508	94,609,792	86,130,261	28,988,150	86.18%
Excess Revenues/Other Financing Sources Over (under) Expend & Oth Financing Uses	(7,552,446)	(3,267,550)	38,247			
Total Ending Fund Balance	\$ 6,447,554		14,224,348			
Ending Fund Balance Accounts						
GL 821 Restricted for Carryovers			389,618			
GL 828 Restricted for Food Services	-		2,533,213			
GL 840 Nonspendable Fund Bal - Inv	-		395,350			
GL 875 Unrsrvd Dsgntd-Conting	-		300,000			
GL 888 Assigned to Other Purposes	-		1,800,000			
GL 890 UnRsrvd Undsgntd Fnd Bal	6,447,554		8,806,167			
Total Ending Fund Balance	\$ 6,447,554		\$ 14,224,348			
Fund Balance % of Expenditures	3%		15%			

Auburn School District No. 408
Capital Projects Fund Budget Status
For the Month of February, 2017

	Annual Budget	Actual For Month	Total For Year	Encumbrance	Balance	Percent
TOTAL BEGINNING FUND BALANCE	\$ 34,500,000		\$ 43,337,295			
REVENUES AND OTHER FINANCING SOURCES						
1000 Local Taxes	3,634,042	31,242	1,743,471		1,890,571	47.98%
2000 Local Non-Tax	3,025,200	125,969	2,403,661		621,539	79.45%
3000 State, General Purpose	-	-	-		-	0.00%
4000 State, Special Purpose	10,000,000	-	-		10,000,000	0.00%
5000 Federal, General Purpose	-	-	-		-	0.00%
6000 Federal, Special Purpose	-	-	-		-	0.00%
7000 Revenues from Other District	-	-	-		-	0.00%
8000 Revenues from Other Agencies	-	-	-		-	0.00%
9000 Other Financing Sources	-	-	95,555,511		(95,555,511)	0.00%
Total Revenues & Other Financing Sources	16,659,242	157,212	99,702,643	-	(83,043,401)	598.48%
EXPENDITURES						
10 Sites	24,200,000	2,879	3,091	-	24,196,910	0.01%
20 Buildings	3,260,488	238,767	1,302,988	629,826	1,327,674	59.28%
30 Equipment	5,000,000	257,777	807,468	575,045	3,617,487	27.65%
40 Energy	-	8,758	142,627	-	(142,627)	0.00%
50 Sales & Lease Expenditures	-	-	-	-	-	0.00%
60 Bond Issuance Expenditures	459,512	120,005	459,511	-	1	100.00%
90 Debt	-	-	-	-	-	0.00%
Total Expenditures	32,920,000	628,185	2,715,684	1,204,871	28,999,444	11.91%
Excess Revenues/Other Financing Sources Over (under) Expend. & Oth Financing Uses	(16,260,758)	(470,974)	96,986,959			
Total Ending Fund Balance	\$ 18,239,242		\$ 140,324,253			
Ending Fund Balance Accounts						
GL 861 Restricted from Bond Proceeds	7,204,852		101,269,759			
GL 862 Restricted from Levy Proceeds	(1,770,778)		6,562,632			
GL 863 Restricted from State Proceeds	8,239,242		21,835,336			
GL 865 Restricted from Other Proceeds	(24,586,150)		-			
GL 866 Restricted from Impact Fees	2,891,318		448,536			
GL 889 Assigned to Fund Purpose	10,000,000		10,207,991			
GL 890 UnRsrvd Undsgntd Fnd Bal	16,260,758					
Total Ending Fund Balance	\$ 18,239,242		\$ 140,324,253			

Auburn School District No. 408
ASB Fund Budget Status
For the Month of February, 2017

	Annual Budget	Actual For Month	Total for Year	Encumb	Balance	Percent
TOTAL BEGINNING FUND BALANCE	\$ 1,032,671		\$ 1,450,714			
REVENUES AND OTHER FINANCING SOURCES						
1000 General Student Body	1,824,512	35,938	494,016		1,330,496	27.08%
2000 Athletics	278,570	23,034	154,370		124,200	55.42%
3000 Classes	254,250	5,190	48,720		205,530	19.16%
4000 Clubs	2,214,885	61,726	595,336		1,619,549	26.88%
6000 Private Moneys	134,000	135	12,012		121,988	8.96%
Total Revenues & Other Financing Sources	4,706,217	126,022	1,304,455	-	3,401,762	27.72%
EXPENDITURES						
1000 General Student Body	1,468,305	27,649	257,915	68,016	1,142,374	22.20%
2000 Athletics	405,543	16,902	132,625	47,553	225,365	44.43%
3000 Classes	268,165	8,966	35,580	11,676	220,909	17.62%
4000 Clubs	2,421,634	97,195	489,914	176,077	1,755,643	27.50%
6000 Private Moneys	134,100	779	6,626	-	127,474	4.94%
Total Expenditures	4,697,747	151,490	922,660	303,322	3,471,765	26.10%
Excess Revenues/Other Financing Sources Over (under) Expend. & Oth Financing Uses	8,470	(25,468)	381,795			
Total Ending Fund Balance	\$ 1,041,141		\$ 1,832,509			
Ending Fund Balance Accounts						
GL 819 Restricted for Fund Purpose	1,041,141		1,832,258			
GL840 Nonspendable-Inven/Prepaid			251			
GL 889 Assigned to Fund Purposes						
Total Ending Fund Balance	\$ 1,041,141		\$ 1,832,509			

Auburn School District No. 408
Debt Service Fund Budget Status
For the Month of February, 2017

	Annual Budget	Actual For Month	Total Year	Encumbrance	Balance	Percent
TOTAL BEGINNING FUND BALANCE	\$ 7,745,000		\$ 7,844,352			
REVENUES AND OTHER FINANCING SOURCES						
1000 Local Taxes	16,545,121	220,408	7,665,143		8,879,978	46.33%
2000 Local Non-Tax	40,000	1,136	25,588		14,412	63.97%
3000 State, General Purpose		-	-		-	0.00%
5000 Federal, General Purpose		-	-		-	0.00%
6000 Federal, Special Purpose		-	-		-	0.00%
9000 Other Financing Sources		-	1,237		(1,237)	0.00%
Total Revenues & Other Financing Sources	16,585,121	221,545	7,691,968		8,893,153	46.38%
EXPENDITURES						
Matured Bond Expenditures	10,635,000	-	10,635,000	-	-	100.00%
Interest on Bonds	6,221,363	-	3,217,744	-	3,003,619	51.72%
Interfund Loan Interest	-	-	-	-	-	0.00%
Bond Transfer Fees	500	-	-	-	500	0.00%
Arbitrage Rebate	-	-	-	-	-	0.00%
Underwriter's fees	-	-	-	-	-	0.00%
Total Expenditures	16,856,863	-	13,852,744	-	3,004,119	82.18%
Other Financing Uses		-	-			
Excess Revenues/Other Financing Sources Over (under) Expend. & Oth Financing Uses	(271,742)	221,545	(6,160,775)			
Total Ending Fund Balance	\$ 7,473,258		\$ 1,683,577			
Ending Fund Balance Accounts						
GL 810 Reserved For Other Items			-			
GL 830 Reserved For Debt Service	7,745,000		1,655,164			
GL 889 Assigned to Fund Purposes	(271,742)		28,413			
GL 890 UnRsrvd Undsgntd Fnd Bal						
Total Ending Fund Balance	\$ 7,473,258		\$ 1,683,577			

Auburn School District No. 408
Transportation Vehicle Fund Budget Status
For the Month of February, 2017

	Annual Budget	Actual For Month	Total For Year	Encumb	Balance	Percent
TOTAL BEGINNING FUND BALANCE	\$ 1,109,088		\$ 2,991,760			
REVENUES AND OTHER FINANCING SOURCES						
1000 Local Taxes	-	-	-		-	0.00%
2000 Local Non-Tax	11,200	1,400	8,651		2,549	77.24%
3000 State, General Purpose	0	-	-		-	0.00%
4000 State, Special Purpose	741,597	-	-		741,597	0.00%
5000 Federal, General Purpose	-	-	-		-	0.00%
8000 Revenues from Other Agencies	-	-	-		-	0.00%
9000 Others Financing Sources	-	-	111,408		(111,408)	0.00%
Total Revenues & Other Financing Sources	752,797	1,400	120,059	-	632,738	15.95%
EXPENDITURES						
Type 30 Equipment	2,260,000	-	1,346,075	-	913,925	59.56%
Total Expenditures	2,260,000	-	1,346,075	-	913,925	59.56%
Excess Revenues/Other Financing Sources Over (under) Expend & Oth Financing Uses	(1,507,203)	1,400	(1,226,016)			
Total Ending Fund Balance	\$ (398,115)		\$ 1,765,744			
Ending Fund Balance Accounts						
GL 819 Restricted for Fund Purposes	1,109,088		2,991,760			
GL 889 Assigned to Special Fund Purposes	152,797		(1,226,016)			
GL 890 UnRsrvd Undsgntd Fnd Bal			-			
Total Ending Fund Balance	\$ 1,261,885		\$ 1,765,744			

AUBURN SCHOOL DISTRICT No. 408

ASB FUND

FEBRUARY, 2017

HIGH SCHOOLS

	Auburn High	Auburn Mountainview	Auburn Riverside	West Auburn	TOTAL
	401	405	408	504	
BEGINNING BALANCE	\$ 192,448.20	\$ 288,256.12	\$ 353,697.83	\$ 7,942.23	\$ 842,344.38
REVENUES	\$ 342,922.51	\$ 300,660.54	\$ 341,169.30	\$ 1,057.43	\$ 985,809.78
EXPENDITURES					
General	\$ 35,445.43	\$ 72,756.40	\$ 35,322.49	\$ 296.59	\$ 143,820.91
Athletics	42,914.59	28,441.38	52,682.68	-	124,038.65
Classes	5,791.13	8,370.86	10,332.96	-	24,494.95
Clubs	153,179.61	127,003.70	144,235.82	-	424,419.13
Private Monies	1,318.94	3,040.12	-	-	4,359.06
TOTAL EXPENDITURES	\$ 238,649.70	\$ 239,612.46	\$ 242,573.95	\$ 296.59	\$ 721,132.70
TRANSFERS					
General	\$ 42,269.00	\$ 21,194.59	\$ 35,782.04	\$ -	\$ 99,245.63
Athletics	(20,735.00)	(13,046.25)	(11,838.92)	-	(45,620.17)
Classes	(712.00)	(135.00)	(6,542.04)	-	(7,389.04)
Clubs	(20,722.00)	(8,013.34)	(17,401.08)	-	(46,136.42)
Private Monies	(100.00)	-	-	-	(100.00)
TOTAL TRANSFERS	\$ -	\$ -	\$ -	\$ -	\$ 0.00
OVER/ (UNDER)	\$ 104,272.81	\$ 61,048.08	\$ 98,595.35	\$ 760.84	\$ 264,677.08
ENDING BALANCE	\$ 296,721.01	\$ 349,304.20	\$ 452,293.18	\$ 8,703.07	\$ 1,107,021.46

AUBURN SCHOOL DISTRICT No. 408

ASB FUND

FEBRUARY, 2017

MIDDLE SCHOOLS

	Cascade	Mt. Baker	Rainier	Olympic	TOTAL
	202	207	206	203	
BEGINNING BALANCE	\$ 72,323.90	\$ 68,999.99	\$ 109,505.87	\$ 102,959.00	\$ 353,788.76
REVENUES	\$ 44,986.76	\$ 57,646.09	\$ 60,327.86	\$ 23,167.40	\$ 186,128.11
EXPENDITURES					
General	\$ 7,767.13	\$ 7,994.55	\$ 19,119.22	\$ 7,646.84	\$ 42,527.74
Athletics	1,324.39	2,933.14	71.20	4,258.11	8,586.84
Classes	-	1,111.59	1,932.54	-	3,044.13
Clubs	17,686.63	24,313.07	18,610.90	4,884.08	65,494.68
Private Monies	941.65	1,325.17	-	-	2,266.82
TOTAL EXPENDITURES	\$ 27,719.80	\$ 37,677.52	\$ 39,733.86	\$ 16,789.03	\$ 121,920.21
TRANSFERS					
General	\$ 5,350.00	\$ 14,835.00	\$ 2,259.33	\$ 345.66	\$ 22,789.99
Athletics	(1,000.00)	(7,260.00)	(200.00)	(245.66)	(8,705.66)
Classes	-	(2,500.00)	(2,000.00)	-	(4,500.00)
Clubs	(4,350.00)	(5,075.00)	(59.33)	(100.00)	(9,584.33)
Private Monies	-	-	-	-	-
TOTAL TRANSFERS	\$ -	\$ -	\$ (0.00)	\$ 0.00	\$ 0.00
OVER/ (UNDER)	\$ 17,266.96	\$ 19,968.57	\$ 20,594.00	\$ 6,378.37	\$ 64,207.90
ENDING BALANCE	\$ 89,590.86	\$ 88,968.56	\$ 130,099.87	\$ 109,337.37	\$ 417,996.66

AUBURN SCHOOL DISTRICT NO. 408
PRIVATE PURPOSE TRUST FUND STATEMENT
February 28, 2017

REVENUES:

InvestED	1,285
Scholarship Donations:	
6007 Pat Kuhlman	1,000
6024 Rotary	1,473
6067 ARHS English SC	500
6076 Hirose Memorial	300
6089 Watt Memorial	125
6100 AMHS Drama	270
6103 Linda Cowan	100
6126 Bob Jones Serv	8,278
6415 Bill Profit	312
6501 Invest Ed- AHS	1,000
6502 Invest Ed - Casc	37
6505 Invest Ed - AMHS	137
6520 Invest Ed - RAI	37
6527 Invest Ed - MTB	37
6528 Invest Ed - ARHS	37
7003 Pioneer Shoe Fund	2,192
7004 ARHS Win Wishes	6,472
7005 AHS Booster Club	6,860
7006 Native Am Students	60
Total Scholarship Donations	29,227
Interest	2,308
Total Revenues	<u>31,535</u>

EXPENDITURES:

InvestED	8,473
6038 ARHS Masonic	-500
6080 Jill Wilson	-2,500
6083 Juan Huseby	-1,000
6126 Bob Jones Serv	132
6204 Auburn Noon Lions	-500
6407 AEA	-667
6501 Invest Ed- AHS	4,004
6502 Invest Ed - Casc	220
6505 Invest Ed - AMHS	2,139
6520 Invest Ed - RAI	152
6527 Invest Ed - MTB	336
6528 Invest Ed - ARHS	1,623
7004 ARHS Win Wishes	4,508
7005 AHS Booster Club	4,769
7006 Native Am Students	15,616
7009 Chinook Shoe Fund	253
Total Expenditures	<u>28,583.76</u>
Excess of Revenue over (under) Expenditure	2,951
Fund Balance - Beginning of the Year	<u>582,027</u>
Fund Balance - Year to Date	<u>\$ 584,978</u>

AUBURN SCHOOL DISTRICT NO 408
NBN Employee Benefits Trust Fund Statement
February 28, 2017

ADDITIONS:

Contributions from Plan Members	\$ 141,687.00
Investment Earnings	<u>506.98</u>
Total Additions	<u>142,193.98</u>

DEDUCTIONS:

Benefits Claims	123,268.56
State Program Fees	<u>350.00</u>
Total Deductions	<u>123,618.56</u>

NET DEDUCTIONS	18,575.42
-----------------------	-----------

Net Assets at Beginning of Year	<u>156,079.43</u>
---------------------------------	-------------------

Net Assets Year To Date	<u><u>\$ 174,654.85</u></u>
-------------------------	-----------------------------

AUBURN SCHOOL DISTRICT NO. 408
Local Grants Received in February, 2017

Donor	Recipient	Amount
Communities in Schools	Gildo Rey	\$1,881.35
Communities in Schools	Gildo Rey	\$1,869.55
Communities in Schools	Dick Scobee	\$1,904.15
Communities in Schools	Dick Scobee	\$1,897.25
Communities in Schools	Terminal Park	\$1,496.84
Communities in Schools	Terminal Park	\$1,492.21
Communities in Schools	Cascade	\$2,370.60
Communities in Schools	Cascade	\$2,367.39
Communities in Schools	Olympic	\$2,418.24
Communities in Schools	Olympic	\$2,312.02
Communities in Schools	Mt. Baker	\$1,532.36
Communities in Schools	Mt. Baker	\$1,526.94
Boeing	Alpac	\$234.00
NEA Read Across America	Chinook	\$1,000.00
PTA Donations	Lake View	\$52.44
NEA Read Across America	Pioneer	\$1,000.00
Krogers Rebate	Terminal Park	\$45.81
PTA Donations	Hazelwood	\$109.69
USAgain	Rainier	\$150.00
Hidden Figures Field Trip	AMHS	\$700.00
Ohiopyle Prints	Auburn Riverside	\$64.74
Washington Turn the Page Award	ASD	\$2,500.00
High Schools STEM Award Math Competition	ASD	\$450.00
Ilalko Turn the Page Award	ASD	\$500.00
Total		<u><u>\$29,875.58</u></u>

10--General Fund-- FUND BALANCE -- AGENCY ACCOUNTS -- Revised -- BUDGET-STATUS-REPORT

Fiscal Year 2016 (September 1, 2016 - August 31, 2017)

For the AUBURN SCHOOL DISTRICT NO. 408 School District for the Month of February, 2017

	ANNUAL BUDGET	ACTUAL FOR MONTH	ACTUAL FOR YEAR	ENCUMBRANCES	BALANCE	PERCENT
<u>A. REVENUES/OTHER FIN. SOURCES</u>						
1000 LOCAL TAXES	39,373,979	333,336.46	18,423,350.50		20,950,628.50	46.79
2000 LOCAL SUPPORT NONTAX	7,886,184	270,965.55	2,393,263.18		5,492,920.82	30.35
3000 STATE, GENERAL PURPOSE	111,001,307	9,250,826.44	54,544,846.96		56,456,460.04	49.14
4000 STATE, SPECIAL PURPOSE	26,653,428	2,279,017.16	13,265,498.86		13,387,929.14	49.77
5000 FEDERAL, GENERAL PURPOSE	26,383	.00	.00		26,383.00	0.00
6000 FEDERAL, SPECIAL PURPOSE	16,606,776	1,000,325.05	5,725,038.66		10,881,737.34	34.47
7000 REVENUES FR OTH SCH DIST	525,000	.00	286,814.37		238,185.63	54.63
8000 OTHER AGENCIES AND ASSOCIATES	102,700	.00	7,490.43		95,209.57	7.29
9000 OTHER FINANCING SOURCES	0	486.85	1,735.83		1,735.83-	0.00
 <u>Total REVENUES/OTHER FIN. SOURCES</u>	 202,175,757	 13,134,957.51	 94,648,038.79		 107,527,718.21	 46.81
 <u>B. EXPENDITURES</u>						
00 Regular Instruction	119,096,383	9,182,861.54	55,359,642.08	50,803,384.90	12,933,356.02	89.14
10 Federal Stimulus	300,641	18,449.18	67,408.00	31,425.85	201,807.15	32.87
20 Special Ed Instruction	25,460,957	2,381,335.10	12,178,649.35	11,205,477.91	2,076,829.74	91.84
30 Voc. Ed Instruction	6,840,420	551,054.36	3,276,681.25	3,111,739.30	451,999.45	93.39
40 Skills Center Instruction	0	.00	.00	0.00	.00	0.00
50+60 Compensatory Ed Instruct.	15,469,858	1,094,514.08	6,249,822.38	5,703,497.70	3,516,537.92	77.27
70 Other Instructional Pgms	3,408,463	76,184.23	415,472.52	312,353.98	2,680,636.50	21.35
80 Community Services	1,482,601	78,940.88	474,046.21	277,665.57	730,889.22	50.70
90 Support Services	37,668,880	3,019,168.56	16,588,069.98	14,684,715.80	6,396,094.22	83.02
 <u>Total EXPENDITURES</u>	 209,728,203	 16,402,507.93	 94,609,791.77	 86,130,261.01	 28,988,150.22	 86.18
 <u>C. OTHER FIN. USES TRANS. OUT (GL 536)</u>	 0	 .00	 .00			
 <u>D. OTHER FINANCING USES (GL 535)</u>	 0	 .00	 .00			
 <u>E. EXCESS OF REVENUES/OTHER FIN.SOURCES</u>						
<u>OVER (UNDER) EXP/OTH FIN USES (A-B-C-D)</u>	7,552,446-	3,267,550.42-	38,247.02		7,590,693.02	100.51-
 <u>F. TOTAL BEGINNING FUND BALANCE</u>	 14,000,000		 14,186,101.05			
 <u>G. G/L 898 PRIOR YEAR ADJUSTMENTS (+OR-)</u>	 XXXXXXXXXX		 .00			
 <u>H. TOTAL ENDING FUND BALANCE</u>	 6,447,554		 14,224,348.07			
<u>(E+F + OR - G)</u>						

I. ENDING FUND BALANCE ACCOUNTS:

G/L 810 RESTRICTED FOR OTHER ITEMS	0	.00
G/L 815 RESTIC UNEQUALIZED DEDUCT REV	0	.00
G/L 821 RESTRICTED FOR CARRYOVER	0	389,617.53
G/L 825 RESTRICTED FOR SKILLS CENTER	0	.00
G/L 828 RESTRICTED FOR C/O OF FS REV	0	2,533,213.37
G/L 830 RESTRICTED FOR DEBT SERVICE	0	.00
G/L 835 RESTRICTD FOR ARBITAGE REBATE	0	.00
G/L 840 NONSPND FB - INVENT/PREPD ITMS	0	395,350.20
G/L 845 RESTRICTED FOR SELF-INSURANCE	0	.00
G/L 850 RESTRICTED FOR UNINSURED RISKS	0	.00
G/L 870 COMMITTED TO OTHER PURPOSES	0	.00
G/L 872 COMMITTED TO MIN FND BAL POLICY	0	.00
G/L 875 ASSIGNED CONTINGENCIES	0	300,000.00
G/L 884 ASSIGNED TO OTHER CAP PROJECTS	0	.00
G/L 888 ASSIGNED TO OTHER PURPOSES	0	1,800,000.00
G/L 890 UNASSIGNED FUND BALANCE	6,447,554	8,806,166.97
G/L 891 UNASSIGNED MIN FND BAL POLICY	0	.00
 <u>TOTAL</u>	 6,447,554	 14,224,348.07

20--Capital Projects-- FUND BALANCE -- AGENCY ACCOUNTS -- Revised -- BUDGET-STATUS-REPORT

Fiscal Year 2016 (September 1, 2016 - August 31, 2017)

For the AUBURN SCHOOL DISTRICT NO. 408 School District for the Month of February, 2017

	ANNUAL BUDGET	ACTUAL FOR MONTH	ACTUAL FOR YEAR	ENCUMBRANCES	BALANCE	PERCENT
<u>A. REVENUES/OTHER FIN. SOURCES</u>						
1000 Local Taxes	3,634,042	31,242.36	1,743,470.87		1,890,571.13	47.98
2000 Local Support Nontax	3,025,200	125,969.21	2,403,661.16		621,538.84	79.45
3000 State, General Purpose	0	.00	.00		.00	0.00
4000 State, Special Purpose	10,000,000	.00	.00		10,000,000.00	0.00
5000 Federal, General Purpose	0	.00	.00		.00	0.00
6000 Federal, Special Purpose	0	.00	.00		.00	0.00
7000 Revenues Fr Oth Sch Dist	0	.00	.00		.00	0.00
8000 Other Agencies and Associates	0	.00	.00		.00	0.00
9000 Other Financing Sources	0	.00	95,555,510.77		95,555,510.77-	0.00
 <u>Total REVENUES/OTHER FIN. SOURCES</u>	 16,659,242	 157,211.57	 99,702,642.80		 83,043,400.80-	 598.48
 <u>B. EXPENDITURES</u>						
10 Sites	24,200,000	2,879.00	3,090.50	0.00	24,196,909.50	0.01
20 Buildings	3,260,488	238,766.84	1,302,987.54	629,826.44	1,327,674.02	59.28
30 Equipment	5,000,000	257,777.05	807,467.78	575,045.01	3,617,487.21	27.65
40 Energy	0	8,758.02	142,627.48	0.00	142,627.48-	0.00
50 Sales & Lease Expenditure	0	.00	.00	0.00	.00	0.00
60 Bond Issuance Expenditure	459,512	120,004.52	459,510.77	0.00	1.23	100.00
90 Debt	0	.00	.00	0.00	.00	0.00
 <u>Total EXPENDITURES</u>	 32,920,000	 628,185.43	 2,715,684.07	 1,204,871.45	 28,999,444.48	 11.91
 <u>C. OTHER FIN. USES TRANS. OUT (GL 536)</u>	 0	 .00	 .00			
 <u>D. OTHER FINANCING USES (GL 535)</u>	 0	 .00	 .00			
 <u>E. EXCESS OF REVENUES/OTHER FIN.SOURCES</u>						
<u>OVER(UNDER)EXP/OTH FIN USES (A-B-C-D)</u>	16,260,758-	470,973.86-	96,986,958.73		113,247,716.73	696.45-
 <u>F. TOTAL BEGINNING FUND BALANCE</u>	 34,500,000		43,337,294.60			
 <u>G. G/L 898 PRIOR YEAR ADJUSTMENTS(+OR-)</u>	 XXXXXXXXXX		.00			
 <u>H. TOTAL ENDING FUND BALANCE</u>	 18,239,242		140,324,253.33			
<u>(E+F + OR - G)</u>						

I. ENDING FUND BALANCE ACCOUNTS:

G/L 810 RESTRICTED FOR OTHER ITEMS	0	.00
G/L 825 RESTRICTED FOR SKILLS CENTER	0	.00
G/L 830 RESTRICTED FOR DEBT SERVICE	0	.00
G/L 835 RESTRICTED FOR ARBITRAGE REBAT	0	.00
G/L 840 NONSPND FB - INVENT/PREPD ITMS	0	.00
G/L 850 RESTRICTED FOR UNINSURED RISKS	0	.00
G/L 861 RESTRICTED FROM BOND PROCEEDS	7,334,882	101,269,758.55
G/L 862 COMMITTED FROM LEVY PROCEEDS	1,900,808-	6,562,631.90
G/L 863 RESTRICTED FROM STATE PROCEEDS	8,239,242	21,835,336.48
G/L 864 RESTRICTED FROM FEDERAL PROCEED	0	.00
G/L 865 RESTRICTED FROM OTHER PROCEEDS	24,586,150-	.00
G/L 866 RESTRICTED FROM IMPACT FEE PROC	2,891,318	448,535.51
G/L 867 RESTRICTED FROM MITIGATION FEES	0	.00
G/L 869 RESTRICTED FROM UNDISTRIB PROCE	0	.00
G/L 870 COMMITTED TO OTHER PURPOSES	0	.00
G/L 889 ASSIGNED TO FUND PURPOSES	10,000,000	10,207,990.89
G/L 890 UNASSIGNED FUND BALANCE	16,260,758	.00
 <u>TOTAL</u>	 18,239,242	 140,324,253.33

30--Debt Service Fund-- FUND BALANCE -- AGENCY ACCOUNTS -- Revised -- BUDGET-STATUS-REPORT

Fiscal Year 2016 (September 1, 2016 - August 31, 2017)

For the AUBURN SCHOOL DISTRICT NO. 408 School District for the Month of February, 2017

	ANNUAL BUDGET	ACTUAL FOR MONTH	ACTUAL FOR YEAR	ENCUMBRANCES	BALANCE	PERCENT
<u>A. REVENUES/OTHER FIN. SOURCES</u>						
1000 Local Taxes	16,545,121	220,408.09	7,665,143.13		8,879,977.87	46.33
2000 Local Support Nontax	40,000	1,136.45	25,588.19		14,411.81	63.97
3000 State, General Purpose	0	.00	.00		.00	0.00
5000 Federal, General Purpose	0	.00	.00		.00	0.00
9000 Other Financing Sources	0	.00	1,237.13		1,237.13-	0.00
 <u>Total REVENUES/OTHER FIN. SOURCES</u>	 16,585,121	 221,544.54	 7,691,968.45		 8,893,152.55	 46.38
 <u>B. EXPENDITURES</u>						
Matured Bond Expenditures	10,635,000	.00	10,635,000.00	0.00	.00	100.00
Interest On Bonds	6,221,363	.00	3,217,743.75	0.00	3,003,619.25	51.72
Interfund Loan Interest	0	.00	.00	0.00	.00	0.00
Bond Transfer Fees	500	.00	.00	0.00	500.00	0.00
Arbitrage Rebate	0	.00	.00	0.00	.00	0.00
Underwriter's Fees	0	.00	.00	0.00	.00	0.00
 <u>Total EXPENDITURES</u>	 16,856,863	 .00	 13,852,743.75	 0.00	 3,004,119.25	 82.18
 <u>C. OTHER FIN. USES TRANS. OUT (GL 536)</u>	 0	 .00	 .00			
 <u>D. OTHER FINANCING USES (GL 535)</u>	 0	 .00	 .00			
 <u>E. EXCESS OF REVENUES/OTHER FIN. SOURCES</u>						
<u>OVER (UNDER) EXPENDITURES (A-B-C-D)</u>	271,742-	221,544.54	6,160,775.30-		5,889,033.30-	> 1000
 <u>F. TOTAL BEGINNING FUND BALANCE</u>	 7,745,000		 7,844,352.16			
 <u>G. G/L 898 PRIOR YEAR ADJUSTMENTS (+OR-)</u>	 XXXXXXXXXX		 .00			
 <u>H. TOTAL ENDING FUND BALANCE</u>	 7,473,258		 1,683,576.86			
<u>(E+F + OR - G)</u>						

I. ENDING FUND BALANCE ACCOUNTS:

G/L 810 RESTRICTED FOR OTHER ITEMS	0	.00
G/L 830 RESTRICTED FOR DEBT SERVICE	7,745,000	1,655,163.87
G/L 835 RESTRICTD FOR ARBITRAGE REBATE	0	.00
G/L 870 COMMITTED TO OTHER PURPOSES	0	.00
G/L 889 ASSIGNED TO FUND PURPOSES	271,742-	28,412.99
G/L 890 UNASSIGNED FUND BALANCE	0	.00
<u>TOTAL</u>	7,473,258	1,683,576.86

40--ASB Fund-- FUND BALANCE -- AGENCY ACCOUNTS -- Revised -- BUDGET-STATUS-REPORT

Fiscal Year 2016 (September 1, 2016 - August 31, 2017)

For the AUBURN SCHOOL DISTRICT NO. 408 School District for the Month of February, 2017

	ANNUAL BUDGET	ACTUAL FOR MONTH	ACTUAL FOR YEAR	ENCUMBRANCES	BALANCE	PERCENT
<u>A. REVENUES</u>						
1000 General Student Body	1,824,512	35,937.62	494,016.30		1,330,495.70	27.08
2000 Athletics	278,570	23,033.80	154,369.74		124,200.26	55.42
3000 Classes	254,250	5,189.92	48,720.45		205,529.55	19.16
4000 Clubs	2,214,885	61,725.78	595,336.30		1,619,548.70	26.88
6000 Private Moneys	134,000	135.02	12,012.29		121,987.71	8.96
<u>Total REVENUES</u>	4,706,217	126,022.14	1,304,455.08		3,401,761.92	27.72
<u>B. EXPENDITURES</u>						
1000 General Student Body	1,468,305	27,648.74	257,915.39	68,015.89	1,142,373.72	22.20
2000 Athletics	405,543	16,902.04	132,625.49	47,552.96	225,364.55	44.43
3000 Classes	268,165	8,965.70	35,579.74	11,675.83	220,909.43	17.62
4000 Clubs	2,421,634	97,195.09	489,913.81	176,076.93	1,755,643.26	27.50
6000 Private Moneys	134,100	778.50	6,625.88	0.00	127,474.12	4.94
<u>Total EXPENDITURES</u>	4,697,747	151,490.07	922,660.31	303,321.61	3,471,765.08	26.10
<u>C. EXCESS OF REVENUES</u>						
<u>OVER (UNDER) EXPENDITURES</u> <u>(A-B)</u>	8,470	25,467.93--	381,794.77		373,324.77	> 1000
<u>D. TOTAL BEGINNING FUND BALANCE</u>	1,032,671		1,450,714.46			
<u>E. G/L 898 PRIOR YEAR ADJUSTMENTS (+OR-)</u>	XXXXXXXXXX		.00			
<u>F. TOTAL ENDING FUND BALANCE</u>	1,041,141		1,832,509.23			
<u>C+D + OR - E)</u>						

G. ENDING FUND BALANCE ACCOUNTS:

G/L 810 RESTRICTED FOR OTHER ITEMS	0	.00
G/L 819 RESTRICTED FOR FUND PURPOSES	1,041,141	1,832,257.94
G/L 840 NONSPND FB - INVENT/PRPD ITMS	0	251.29
G/L 850 RESTRICTED FOR UNINSURED RISKS	0	.00
G/L 870 COMMITTED TO OTHER PURPOSES	0	.00
G/L 889 ASSIGNED TO FUND PURPOSES	0	.00
G/L 890 UNASSIGNED FUND BALANCE	0	.00
 <u>TOTAL</u>	 1,041,141	 1,832,509.23

90--Transportation Vehicle Fund-- FUND BALANCE -- AGENCY ACCOUNTS -- Revised -- BUDGET-STATUS-REPORT

Fiscal Year 2016 (September 1, 2016 - August 31, 2017)

For the AUBURN SCHOOL DISTRICT NO. 408 School District for the Month of February, 2017

<u>A. REVENUES/OTHER FIN. SOURCES</u>	<u>ANNUAL BUDGET</u>	<u>ACTUAL FOR MONTH</u>	<u>ACTUAL FOR YEAR</u>	<u>ENCUMBRANCES</u>	<u>BALANCE</u>	<u>PERCENT</u>
1000 Local Taxes	0	.00	.00		.00	0.00
2000 Local Nontax	11,200	1,400.41	8,650.76		2,549.24	77.24
3000 State, General Purpose	0	.00	.00		.00	0.00
4000 State, Special Purpose	741,597	.00	.00		741,597.00	0.00
5000 Federal, General Purpose	0	.00	.00		.00	0.00
8000 Other Agencies and Associates	0	.00	.00		.00	0.00
9000 Other Financing Sources	0	.00	111,408.22		111,408.22-	0.00
<u>A. TOTAL REV/OTHER FIN.SRCS(LESS TRANS)</u>	<u>752,797</u>	<u>1,400.41</u>	<u>120,058.98</u>		<u>632,738.02</u>	<u>15.95</u>
 <u>B. 9900 TRANSFERS IN FROM GF</u>	 0	 .00	 .00		 .00	 0.00
 <u>C. Total REV./OTHER FIN. SOURCES</u>	 752,797	 1,400.41	 120,058.98		 632,738.02	 15.95
 <u>D. EXPENDITURES</u>						
Type 30 Equipment	2,260,000	.00	1,346,074.87	0.00	913,925.13	59.56
Type 60 Bond Levy Issuance	0	.00	.00	0.00	.00	0.00
Type 90 Debt	0	.00	.00	0.00	.00	0.00
 <u>Total EXPENDITURES</u>	 2,260,000	 .00	 1,346,074.87	 0.00	 913,925.13	 59.56
 <u>E. OTHER FIN. USES TRANS. OUT (GL 536)</u>	 0	 .00	 .00			
 <u>F. OTHER FINANCING USES (GL 535)</u>	 0	 .00	 .00			
 <u>G. EXCESS OF REVENUES/OTHER FIN SOURCES</u>						
<u>OVER(UNDER)EXP/OTH FIN USES(C-D-E-F)</u>	<u>1,507,203-</u>	<u>1,400.41</u>	<u>1,226,015.89-</u>		<u>281,187.11</u>	<u>18.66-</u>
 <u>H. TOTAL BEGINNING FUND BALANCE</u>	 1,109,088		 2,991,759.54			
 <u>I. G/L 898 PRIOR YEAR ADJUSTMENTS(+OR-)</u>	 XXXXXXXXXX		 .00			
 <u>J. TOTAL ENDING FUND BALANCE</u>	 398,115-		 1,765,743.65			
<u>(G+H + OR - I)</u>						

K. ENDING FUND BALANCE ACCOUNTS:

G/L 810 RESTRICTED FOR OTHER ITEMS	0	.00
G/L 819 RESTRICTED FOR FUND PURPOSES	1,109,088	2,991,759.54
G/L 830 RESTRICTED FOR DEBT SERVICE	0	.00
G/L 835 RESTRICTD FOR ARBITAGE REBATE	0	.00
G/L 850 RESTRICTED FOR UNINSURED RISKS	0	.00
G/L 889 ASSIGNED TO FUND PURPOSES	1,507,203-	1,226,015.89-
G/L 890 UNASSIGNED FUND BALANCE	0	.00
 <u>TOTAL</u>	 398,115-	 1,765,743.65

***** End of report *****

1. Approval of Minutes

Recommendation: That the minutes be approved.

Recommendation: That the above-mentioned policy be accepted for second reading and adoption.

3. Discussion

NAMING FACILITIES AND MEMORIALS (DRAFT 3-1-17)

Naming/Renaming of District Facilities

The board of directors considers the naming/renaming of a district facility a matter of significance. In selecting a name, the board will give preference to names identifying the geographic area of the community served by said facility ~~or prominent component. Naming of facilities includes only a whole facility and not locations or portions of a larger facility (e.g. auditorium, athletic fields).~~ Normally, facilities (library, playfield, gymnasium, etc.) that are a part of a school location are not independently named. However, the board will make the decision if special circumstances exist that would justify an independent name for a portion of an existing facility.

In exceptional instances, the board may elect to name/rename a facility **or portion of a facility** in honor of an individual who has attained a great prominence, either locally or nationally, or made a long-term contribution to the education of children in the Auburn schools. Names of persons who are living or have been deceased less than three years **generally** will not be considered. **However, special consideration may be given to individuals still living who have made significant contributions to the local community, if circumstances warrant.**

Memorials

The board recognizes the desire to honor the life and memory of students and employees who have positively impacted education in the district. A suitable memorial for district employees or students will contribute to the educational setting and be consistent with district objectives. No portion of any building or site shall be named differently than the name of the school or facility. Names of persons who are living or have been deceased less than three years **generally** will not be considered. **However, special consideration may be given to individuals still living who have made significant contributions to the local community, if circumstances warrant.**

The superintendent or designee shall develop a procedure that describes the process for the application for and approval of a collective memorial and that includes a list of other suitable memorials for honoring deceased students and staff.