

AGENDA FOR BOARD OF DIRECTORS  
AUBURN SCHOOL DISTRICT NO. 408  
Monday, April 24, 2017

- I. TIME AND PLACE
  - 1. 7 p.m. at the James P. Fugate Administration Building
- II. ROLL CALL
  - 1. Roll call of board members
- III. PLEDGE OF ALLEGIANCE
- IV. AUDIENCE PARTICIPATION
  - 1. Written communications
  - 2. Scheduled communications
  - 3. Unscheduled communications
  - 4. Community groups and organizations
- V. LEGISLATIVE UPDATE
- VI. STUDENT AND STAFF RECOGNITION
  - 1. Recognition of student
  - 2. Recognition of staff
  - 3. Years of service
- VII. STUDENT PARTICIPATION
  - 1. Evergreen Heights Elementary School art display
  - 2. Evergreen Heights Elementary School PTA report
  - 3. Activity/athletic report
  - 4. Request for travel
- VIII. PERSONNEL
  - 1. Certificated and classified personnel report
  - 2. Requests for travel
- IX. BUILDING PROGRAM
  - 1. Rejection of bid
  - 2. Authorization to call for bids
- X. FINANCE
  - 1. Vouchers
  - 2. Award of contract
  - 3. Financial statements

XI. DIRECTORS

1. Approval of minutes
2. Strategic Plan 3.0 update (Presentation)
3. Discussion
4. Executive session

## LEGISLATIVE UPDATE

The board will discuss legislative items.

## RECOGNITION

### 1. Recognition of Student

The Auburn School District Board of Directors will recognize Gus Bronk, a senior at Auburn High School, for being an outstanding student.

Gus is very involved in a variety of activities at Auburn High. He is an ASB officer, a leader in the TREAD First Robotics program, and is a member of the National Honor Society.

He also participates in numerous community service projects that impact Auburn High and the entire Auburn community.

His community service includes:

- Participating in the City of Auburn Clean Sweep
- Organizing and running several FIRST Robotics tournaments at AHS
- Working with young kids at Auburn Kids Day
- Helping Auburn Parks and Rec run seminars for younger kids
- Mentoring four middle school FIRST Lego League teams
- Mentoring a Special Olympics Unified Robotics team

As an ASB officer, Gus uses his technical knowledge to create videos and slideshows for use in the school and at school assemblies. He was instrumental in putting together the video slideshow for the Bob Jones memorial at Auburn High. His work on this important and emotionally sensitive project enabled the AHS community to see Bob Jones one last time, as well as hear Bob's words one last time.

In addition to his many activities, Gus maintains a 4.0 GPA with a heavy class load, including two AP calculus classes, AP lit, AP US politics and government, physics, electronics, and aerospace assembly. He plans to attend the University of Washington next year and major in computer science.

### 2. Recognition of Staff

The Auburn School District Board of Directors will recognize Candace Gerlt, custodian at Dick Scobee Elementary, for her outstanding service.

Candace started in the Auburn School District as a substitute custodian and earned a full-time position almost four years later. She worked at Mt. Baker for about two years and is in her second year at Dick Scobee.

Prior to working in the district, she worked at a liquidator in Kent.

Candace said, "We have awesome people in our building and I love the teamwork in our district. Being nice goes a long way and I always work with the kids on being nice."

Preschool teacher Lynda Meheula said, "Candace consistently goes above and beyond to ensure Dick Scobee is maintained to the highest standard possible. She is always coming to the rescue, whether it's spilled

paint, a clogged sink, providing safety checks, and more. She is amazing!"

Raised in Oregon, Candace has lived in Washington for 19 years. She has two sons, Max, 15 and Adam, 19. She lives near Rainier Middle School, where she started volunteering in the district by being a crossing guard to make sure kids were safely getting to school.

When not at work, Candace likes to go fishing and spends time helping friends and others who need her assistance. She also is interested in red wiggler composting worms and shares her knowledge with students and staff about composting.

### 3. Years of Service

This evening, the board will recognize Auburn School District staff with 30 years of service in education.

Lloyd Barnes	Mark McMullen
Tracy Brown	Debra Nesbitt
Arleen Burkhalter	Pamela Parks
Debbi Capponi-Glidewell	Cindy Pratt
Kimberly Detwiler	Lori Prince
Sandra Gordon	Patrice Rademacher
William Gowan	Keith Ray
Lori Grimm	Dyann Seidl
Linda Harmaning	Penni Swanson
David Ingham	Gary Van Hee
Stacey Jansson	Michael Weibel
Kirk Jonasson	Nola Wilson
Brenda Leyda	Paul Wolters
Judith Lutton	

## STUDENT PARTICIPATION

### 1. Evergreen Heights Elementary School Art Display

Ryan Foster, associate superintendent of principal leadership and school programs, will introduce Anne Gayman, Evergreen Heights Elementary School principal, who will introduce Mattie Gillaspy and Mary Rush, students, to help present the Evergreen Heights Elementary School art display and answer questions from the board.

### 2. Evergreen Heights Elementary School PTA Report

Ryan Foster will have Anne Gayman introduce Ruth Herren and Ashley Gillaspy, PTA president and vice president, respectively, to present the Evergreen Heights Elementary School PTA report and answer any questions from the board.

### 3. Activity/Athletic Report-Auburn High School Debate Program

Ryan Foster will introduce DeAnna Kilga, Auburn High School assistant principal, who will introduce Donna Bowler, Auburn High School teacher. Ms. Bowler will introduce Jake Willroth and Gabriel Mendoza, students, who will report on the Auburn High School debate program and answer questions from the board.

### 4. Request for Travel

- a. Forty Auburn Mountainview High School students request permission to travel to Leavenworth, Saturday to Sunday, May 20-21. The purpose of the trip is to participate in the Orchestra Tour to Leavenworth. Lodging will be at the Alpine Rivers Inn, meals will be at local restaurants, and travel will be by charter bus. All expenses will be paid by ASB funds. Elsa Fager, Auburn Mountainview High School teacher, requests permission to accompany the students. No substitute will be needed.

Ms. Bergeon, Ms. Burke, Ms. Revely, and Mr. Anderson, parent chaperones, request permission to accompany the students.





























PERSONNEL--CERTIFICATED AND CLASSIFIED

## 1. Certificated and Classified Personnel Report

Attached is the personnel report, for certificated and classified personnel, for the board's approval.

Recommendation: That the board approve the attached report.

## 2. Requests for Travel

- a. Rhonda Larson, assistant superintendent of family engagement and student success, and Denise Daniels, assistant director of engagement, outreach, and equity, request permission to travel to San Francisco, California, Thursday to Saturday, June 22-24. The purpose of the trip is to attend the Engaging Families Conference. Lodging will be at the Hilton Union Square, meals will be at local restaurants, and travel will be by airplane. All travel, lodging, and meal expenses will be paid by district funds. No substitutes will be needed.
- b. Stephanie Hodge, Auburn Mountainview High School teacher, requests permission to travel to Newport Beach, California, Wednesday to Friday, June 28-30. The purpose of the trip is to attend the SIOP National Conference. Lodging will be at a hotel to be determined, meals will be at local restaurants, and travel will be by airplane. All expenses will be paid by professional development and personal funds. No substitute will be needed.
- c. Vicki Alonzo, director of public information, requests permission to travel to San Antonio, Texas, Saturday to Thursday, July 8-13. The purpose of the trip is to attend the National NSPRA Seminar. Lodging will be at the Holiday Inn, meals will be at local restaurants, and travel will be by airplane. All expenses will be paid by district funds. No substitute will be needed.

Recommendation: That the above trips be approved as requested.

PERSONNEL REPORT - CERTIFICATED

Classification	Job Type	Building	Name	Start Date	Hours	Rate of Pay	Comment
Curriculum-Noncurriculum							
CERTIFICATED	#TECHCONNECT TEACHER PROF DEV	EVERGREEN HTS	ADAMS, VENDALYN	4/1/2017		STIPEND \$150	
CERTIFICATED	#TECHCONNECT TEACHER PROF DEV	CASCADE	ALLEN, ANDREW	4/1/2017		STIPEND \$150	
CERTIFICATED	#TECHCONNECT TEACHER PROF DEV	RAINIER	ALLEN, J. SCOTT	4/1/2017		STIPEND \$150	
CERTIFICATED	#TECHCONNECT TEACHER PROF DEV	TERMINAL PARK	ANDERSEN, STEPHANIE	4/1/2017		STIPEND \$150	
CERTIFICATED	#TECHCONNECT TEACHER PROF DEV	ILALCO	ANDERSON, AMY	4/1/2017		STIPEND \$150	
CERTIFICATED	#TECHCONNECT TEACHER PROF DEV	LAKELAND HILLS	ANDRADE-ARRIETA, APRIL	4/1/2017		STIPEND \$150	
CERTIFICATED	#TECHCONNECT TEACHER PROF DEV	ARTHUR JACOBSEN	ARCHER, MELISSA	4/1/2017		STIPEND \$150	
CERTIFICATED	#TECHCONNECT TEACHER PROF DEV	RAINIER	ARMBRUSTER, SUSAN	4/1/2017		STIPEND \$150	
CERTIFICATED	#TECHCONNECT TEACHER PROF DEV	OLYMPIC	BAILEY, CRISTAL	4/1/2017		STIPEND \$150	
CERTIFICATED	#TECHCONNECT TEACHER PROF DEV	AUBURN HIGH	BAILEY, WHITNEY	4/1/2017		STIPEND \$150	
CERTIFICATED	#TECHCONNECT TEACHER PROF DEV	AUB RIVERSIDE	BARDSLEY, STACY	4/1/2017		STIPEND \$150	
CERTIFICATED	#TECHCONNECT TEACHER PROF DEV	AUB RIVERSIDE	BARNETT, CAROL	4/1/2017		STIPEND \$150	
CERTIFICATED	#TECHCONNECT TEACHER PROF DEV	MT. VIEW SR HI	BAUMSTARK, PATRIA	4/1/2017		STIPEND \$150	
CERTIFICATED	#TECHCONNECT TEACHER PROF DEV	AUBURN HIGH	BLOEDEL, JEANNE	4/1/2017		STIPEND \$150	
CERTIFICATED	#TECHCONNECT TEACHER PROF DEV	LEA HILL	BLOSSER, REBEKAH	4/1/2017		STIPEND \$150	
CERTIFICATED	#TECHCONNECT TEACHER PROF DEV	MT. BAKER	BONNELL, WILLIAM	4/1/2017		STIPEND \$150	
CERTIFICATED	#TECHCONNECT TEACHER PROF DEV	LAKELAND HILLS	BOTZ, JULIE	4/1/2017		STIPEND \$150	
CERTIFICATED	#TECHCONNECT TEACHER PROF DEV	ARTHUR JACOBSEN	BOURNE, JEANETTE	4/1/2017		STIPEND \$150	
CERTIFICATED	#TECHCONNECT TEACHER PROF DEV	TERMINAL PARK	BROOKS, STACEY	4/1/2017		STIPEND \$150	
CERTIFICATED	#TECHCONNECT TEACHER PROF DEV	TERMINAL PARK	BRUNELLE, JEANETTE	4/1/2017		STIPEND \$150	
CERTIFICATED	#TECHCONNECT TEACHER PROF DEV	ARTHUR JACOBSEN	BUSHAW, BREANNA	4/1/2017		STIPEND \$150	
CERTIFICATED	#TECHCONNECT TEACHER PROF DEV	OLYMPIC	BUTLER, MARK	4/1/2017		STIPEND \$150	
CERTIFICATED	#TECHCONNECT TEACHER PROF DEV	LEA HILL	CALDARULO, BRITTANY	4/1/2017		STIPEND \$150	
CERTIFICATED	#TECHCONNECT TEACHER PROF DEV	MT. BAKER	CALKINS, DEBORAH	4/1/2017		STIPEND \$150	
CERTIFICATED	#TECHCONNECT TEACHER PROF DEV	LAKELAND HILLS	CAMPBELL, DAVID	4/1/2017		STIPEND \$150	
CERTIFICATED	#TECHCONNECT TEACHER PROF DEV	AUBURN HIGH	CAPPS, JASON	4/1/2017		STIPEND \$150	
CERTIFICATED	#TECHCONNECT TEACHER PROF DEV	OLYMPIC	CARNEY, ORLYN	4/1/2017		STIPEND \$150	
CERTIFICATED	#TECHCONNECT TEACHER PROF DEV	MT. BAKER	CARSTENS, CORRIE	4/1/2017		STIPEND \$150	
CERTIFICATED	#TECHCONNECT TEACHER PROF DEV	HAZELWOOD	CARTER, AMBER	4/1/2017		STIPEND \$150	
CERTIFICATED	#TECHCONNECT TEACHER PROF DEV	MT. BAKER	CARTER, JEREMIAH	4/1/2017		STIPEND \$150	
CERTIFICATED	#TECHCONNECT TEACHER PROF DEV	HAZELWOOD	CELVER, CHRISTINA	4/1/2017		STIPEND \$150	
CERTIFICATED	#TECHCONNECT TEACHER PROF DEV	MT. VIEW SR HI	CHAVEZ, LONNIE	4/1/2017		STIPEND \$150	
CERTIFICATED	#TECHCONNECT TEACHER PROF DEV	OLYMPIC	CLARK, LISA	4/1/2017		STIPEND \$150	
CERTIFICATED	#TECHCONNECT TEACHER PROF DEV	MT. VIEW SR HI	CLASSEN, JENNIFER	4/1/2017		STIPEND \$150	
CERTIFICATED	#TECHCONNECT TEACHER PROF DEV	OLYMPIC	COBURN, MICHELLE	4/1/2017		STIPEND \$150	
CERTIFICATED	#TECHCONNECT TEACHER PROF DEV	TERMINAL PARK	COMSTOCK, MICHELLE	4/1/2017		STIPEND \$150	
CERTIFICATED	#TECHCONNECT TEACHER PROF DEV	ANNEX	COOK, ANN	4/1/2017		STIPEND \$150	
CERTIFICATED	#TECHCONNECT TEACHER PROF DEV	MT. BAKER	COPE, NICHOLAS	4/1/2017		STIPEND \$150	
CERTIFICATED	#TECHCONNECT TEACHER PROF DEV	ARTHUR JACOBSEN	COVEY, ERICA	4/1/2017		STIPEND \$150	
CERTIFICATED	#TECHCONNECT TEACHER PROF DEV	LEA HILL	DANIELS, TREENA	4/1/2017		STIPEND \$150	
CERTIFICATED	#TECHCONNECT TEACHER PROF DEV	MT. VIEW SR HI	DAVIDSON, CARY	4/1/2017		STIPEND \$150	
CERTIFICATED	#TECHCONNECT TEACHER PROF DEV	MT. BAKER	DAVIS, MARGERY	4/1/2017		STIPEND \$150	
CERTIFICATED	#TECHCONNECT TEACHER PROF DEV	MT. BAKER	DETWILER, KIMBERLY	4/1/2017		STIPEND \$150	
CERTIFICATED	#TECHCONNECT TEACHER PROF DEV	AUB RIVERSIDE	DICKSON, GLENN	4/1/2017		STIPEND \$150	
CERTIFICATED	#TECHCONNECT TEACHER PROF DEV	AUBURN HIGH	DIEBAG, JAMES	4/1/2017		STIPEND \$150	
CERTIFICATED	#TECHCONNECT TEACHER PROF DEV	PIONEER	DIEBAG, MELINDA	4/1/2017		STIPEND \$150	
CERTIFICATED	#TECHCONNECT TEACHER PROF DEV	ILALCO	DOCHERTY, TRACEY	4/1/2017		STIPEND \$150	
CERTIFICATED	#TECHCONNECT TEACHER PROF DEV	CASCADE	DOW, DAVID	4/1/2017		STIPEND \$150	
CERTIFICATED	#TECHCONNECT TEACHER PROF DEV	LAKELAND HILLS	DRAKE, RUBY	4/1/2017		STIPEND \$150	
CERTIFICATED	#TECHCONNECT TEACHER PROF DEV	MT. BAKER	DUCA, CARMELA	4/1/2017		STIPEND \$150	
CERTIFICATED	#TECHCONNECT TEACHER PROF DEV	MT. BAKER	DURHAM, ANN	4/1/2017		STIPEND \$150	
CERTIFICATED	#TECHCONNECT TEACHER PROF DEV	ILALCO	DUTOIT, MICHELLE	4/1/2017		STIPEND \$150	
CERTIFICATED	#TECHCONNECT TEACHER PROF DEV	DICK SCOBEE	DWYER, VERONICA	4/1/2017		STIPEND \$150	
CERTIFICATED	#TECHCONNECT TEACHER PROF DEV	CASCADE	EASLEY, JOSHUA	4/1/2017		STIPEND \$150	
CERTIFICATED	#TECHCONNECT TEACHER PROF DEV	MT. VIEW SR HI	ECKELMAN, PATRICIA	4/1/2017		STIPEND \$150	
CERTIFICATED	#TECHCONNECT TEACHER PROF DEV	AUB RIVERSIDE	EDWARDS, MICHELLE	4/1/2017		STIPEND \$150	
CERTIFICATED	#TECHCONNECT TEACHER PROF DEV	ILALCO	EGBERT, JESSICA	4/1/2017		STIPEND \$150	
CERTIFICATED	#TECHCONNECT TEACHER PROF DEV	AUBURN HIGH	EGBERT, STEPHEN	4/1/2017		STIPEND \$150	
CERTIFICATED	#TECHCONNECT TEACHER PROF DEV	ARTHUR JACOBSEN	ELLIOTT, NAOMI	4/1/2017		STIPEND \$150	
CERTIFICATED	#TECHCONNECT TEACHER PROF DEV	MT. VIEW SR HI	ELLIS, DAVID	4/1/2017		STIPEND \$150	
CERTIFICATED	#TECHCONNECT TEACHER PROF DEV	CHINOOK	ERICKSON, SEASAN	4/1/2017		STIPEND \$150	
CERTIFICATED	#TECHCONNECT TEACHER PROF DEV	DICK SCOBEE	ERONEMO, ASHLEY	4/1/2017		STIPEND \$150	
CERTIFICATED	#TECHCONNECT TEACHER PROF DEV	HAZELWOOD	FERGUSON, SANDRA	4/1/2017		STIPEND \$150	
CERTIFICATED	#TECHCONNECT TEACHER PROF DEV	ALPAC	FERRELL, LEON	4/1/2017		STIPEND \$150	
CERTIFICATED	#TECHCONNECT TEACHER PROF DEV	ILALCO	FIELDS, BEVERLY	4/1/2017		STIPEND \$150	
CERTIFICATED	#TECHCONNECT TEACHER PROF DEV	TERMINAL PARK	FINLEY, ROSE	4/1/2017		STIPEND \$150	
CERTIFICATED	#TECHCONNECT TEACHER PROF DEV	GILDO REY	FITZGERALD, WILLIAM	4/1/2017		STIPEND \$150	
CERTIFICATED	#TECHCONNECT TEACHER PROF DEV	WASHINGTON	FLANDERS, MICHELLE	4/1/2017		STIPEND \$150	
CERTIFICATED	#TECHCONNECT TEACHER PROF DEV	LEA HILL	FOSS, KIMBERLEY	4/1/2017		STIPEND \$150	
CERTIFICATED	#TECHCONNECT TEACHER PROF DEV	ARTHUR JACOBSEN	FOSTER, HEATHER	4/1/2017		STIPEND \$150	
CERTIFICATED	#TECHCONNECT TEACHER PROF DEV	MT. VIEW SR HI	FRANCE, ADAM	4/1/2017		STIPEND \$150	
CERTIFICATED	#TECHCONNECT TEACHER PROF DEV	ANNEX	FRAZIER, LESLIE	4/1/2017		STIPEND \$150	
CERTIFICATED	#TECHCONNECT TEACHER PROF DEV	PIONEER	FREDRICKSON, DEANN	4/1/2017		STIPEND \$150	
CERTIFICATED	#TECHCONNECT TEACHER PROF DEV	CHINOOK	GALATI, ELIZABETH	4/1/2017		STIPEND \$150	
CERTIFICATED	#TECHCONNECT TEACHER PROF DEV	AUB RIVERSIDE	GALLINATTI, LISA	4/1/2017		STIPEND \$150	
CERTIFICATED	#TECHCONNECT TEACHER PROF DEV	DICK SCOBEE	GARNER, ZACHARY	4/1/2017		STIPEND \$150	
CERTIFICATED	#TECHCONNECT TEACHER PROF DEV	LEA HILL	GERING, TREVOR	4/1/2017		STIPEND \$150	
CERTIFICATED	#TECHCONNECT TEACHER PROF DEV	ANNEX	GIBSON-MYERS, ELIZABETH	4/1/2017		STIPEND \$150	
CERTIFICATED	#TECHCONNECT TEACHER PROF DEV	EVERGREEN HTS	GILLASPY, ASHLEY	4/1/2017		STIPEND \$150	
CERTIFICATED	#TECHCONNECT TEACHER PROF DEV	DICK SCOBEE	GOAD, PATRICIA	4/1/2017		STIPEND \$150	
CERTIFICATED	#TECHCONNECT TEACHER PROF DEV	CASCADE	GODFREY, DEAN	4/1/2017		STIPEND \$150	
CERTIFICATED	#TECHCONNECT TEACHER PROF DEV	OLYMPIC	GREENWOOD, MICHELLE	4/1/2017		STIPEND \$150	
CERTIFICATED	#TECHCONNECT TEACHER PROF DEV	AUB RIVERSIDE	HALFORD, SANDRA	4/1/2017		STIPEND \$150	
CERTIFICATED	#TECHCONNECT TEACHER PROF DEV	TERMINAL PARK	HAMILTON, GINA	4/1/2017		STIPEND \$150	
CERTIFICATED	#TECHCONNECT TEACHER PROF DEV	TERMINAL PARK	HANSON, MARLENE	4/1/2017		STIPEND \$150	
CERTIFICATED	#TECHCONNECT TEACHER PROF DEV	ARTHUR JACOBSEN	HARRIS, MARTIN	4/1/2017		STIPEND \$150	
CERTIFICATED	#TECHCONNECT TEACHER PROF DEV	MT. BAKER	HAWK, MINDY	4/1/2017		STIPEND \$150	
CERTIFICATED	#TECHCONNECT TEACHER PROF DEV	LAKE VIEW	HAWS, JAMIE	4/1/2017		STIPEND \$150	
CERTIFICATED	#TECHCONNECT TEACHER PROF DEV	LAKELAND HILLS	HENDRICKSON, JOANN	4/1/2017		STIPEND \$150	

CERTIFICATED	#TECHCONNECT TEACHER PROF DEV	PIONEER	HILL, ANGELA	4/1/2017	STIPEND \$150
CERTIFICATED	#TECHCONNECT TEACHER PROF DEV	ARTHUR JACOBSEN	HILLS, CHELSEA	4/1/2017	STIPEND \$150
CERTIFICATED	#TECHCONNECT TEACHER PROF DEV	MT. VIEW SR HI	HODGE, STEPHANIE	4/1/2017	STIPEND \$150
CERTIFICATED	#TECHCONNECT TEACHER PROF DEV	PIONEER	HOLBROOK, DEANNA	4/1/2017	STIPEND \$150
CERTIFICATED	#TECHCONNECT TEACHER PROF DEV	PIONEER	HOSKIN, DAVID	4/1/2017	STIPEND \$150
CERTIFICATED	#TECHCONNECT TEACHER PROF DEV	AUB RIVERSIDE	HUSAR, SCOTT	4/1/2017	STIPEND \$150
CERTIFICATED	#TECHCONNECT TEACHER PROF DEV	LAKELAND HILLS	JEFFREYS, CHRISTY	4/1/2017	STIPEND \$150
CERTIFICATED	#TECHCONNECT TEACHER PROF DEV	LEA HILL	JENKINS, SHANA	4/1/2017	STIPEND \$150
CERTIFICATED	#TECHCONNECT TEACHER PROF DEV	EVERGREEN HTS	JEWETT, MARICE	4/1/2017	STIPEND \$150
CERTIFICATED	#TECHCONNECT TEACHER PROF DEV	WASHINGTON	JOHNSON, BENJAMIN	4/1/2017	STIPEND \$150
CERTIFICATED	#TECHCONNECT TEACHER PROF DEV	ANNEX	JOHNSON, SHAWN	4/1/2017	STIPEND \$150
CERTIFICATED	#TECHCONNECT TEACHER PROF DEV	EVERGREEN HTS	JONES, JANA	4/1/2017	STIPEND \$150
CERTIFICATED	#TECHCONNECT TEACHER PROF DEV	DICK SCOBEE	JONES, JUDITH	4/1/2017	STIPEND \$150
CERTIFICATED	#TECHCONNECT TEACHER PROF DEV	AUBURN HIGH	KEEFE, REBECCA	4/1/2017	STIPEND \$150
CERTIFICATED	#TECHCONNECT TEACHER PROF DEV	LAKELAND HILLS	KEITH, ALAURA	4/1/2017	STIPEND \$150
CERTIFICATED	#TECHCONNECT TEACHER PROF DEV	ARTHUR JACOBSEN	KEMP, BRIAN	4/1/2017	STIPEND \$150
CERTIFICATED	#TECHCONNECT TEACHER PROF DEV	AUBURN HIGH	KEMP, CYNTHIA	4/1/2017	STIPEND \$150
CERTIFICATED	#TECHCONNECT TEACHER PROF DEV	ARTHUR JACOBSEN	KEMP, EMILY	4/1/2017	STIPEND \$150
CERTIFICATED	#TECHCONNECT TEACHER PROF DEV	MT. BAKER	KEMP, JENNIFER	4/1/2017	STIPEND \$150
CERTIFICATED	#TECHCONNECT TEACHER PROF DEV	DICK SCOBEE	KIESWETHER, BREANNA	4/1/2017	STIPEND \$150
CERTIFICATED	#TECHCONNECT TEACHER PROF DEV	WASHINGTON	KILBURG, KRISTY	4/1/2017	STIPEND \$150
CERTIFICATED	#TECHCONNECT TEACHER PROF DEV	GILDO REY	KIM, DANBY	4/1/2017	STIPEND \$150
CERTIFICATED	#TECHCONNECT TEACHER PROF DEV	MT. BAKER	KING, LAURA	4/1/2017	STIPEND \$150
CERTIFICATED	#TECHCONNECT TEACHER PROF DEV	LAKELAND HILLS	KNAPP, STEPHANIE	4/1/2017	STIPEND \$150
CERTIFICATED	#TECHCONNECT TEACHER PROF DEV	CHINOOK	KOENIG, JAMIE	4/1/2017	STIPEND \$150
CERTIFICATED	#TECHCONNECT TEACHER PROF DEV	MT. BAKER	KOENIG, SALLY	4/1/2017	STIPEND \$150
CERTIFICATED	#TECHCONNECT TEACHER PROF DEV	PIONEER	LABRIE, JAMES	4/1/2017	STIPEND \$150
CERTIFICATED	#TECHCONNECT TEACHER PROF DEV	MT. BAKER	LACY, TAYLOR	4/1/2017	STIPEND \$150
CERTIFICATED	#TECHCONNECT TEACHER PROF DEV	MT. BAKER	LANTZ, KATHY	4/1/2017	STIPEND \$150
CERTIFICATED	#TECHCONNECT TEACHER PROF DEV	ARTHUR JACOBSEN	LARSON, KATE	4/1/2017	STIPEND \$150
CERTIFICATED	#TECHCONNECT TEACHER PROF DEV	RAINIER	LASHER, TRACY	4/1/2017	STIPEND \$150
CERTIFICATED	#TECHCONNECT TEACHER PROF DEV	DICK SCOBEE	LAVINE, ANGELA	4/1/2017	STIPEND \$150
CERTIFICATED	#TECHCONNECT TEACHER PROF DEV	LAKELAND HILLS	LEAF, VICKIE	4/1/2017	STIPEND \$150
CERTIFICATED	#TECHCONNECT TEACHER PROF DEV	LEA HILL	LEAF-DENT, KATHERINE	4/1/2017	STIPEND \$150
CERTIFICATED	#TECHCONNECT TEACHER PROF DEV	MT. VIEW SR HI	LEE, JESSICA	4/1/2017	STIPEND \$150
CERTIFICATED	#TECHCONNECT TEACHER PROF DEV	OLYMPIC	LEMKE, MARTINA	4/1/2017	STIPEND \$150
CERTIFICATED	#TECHCONNECT TEACHER PROF DEV	OLYMPIC	LENIHAN, LAINE	4/1/2017	STIPEND \$150
CERTIFICATED	#TECHCONNECT TEACHER PROF DEV	LAKE VIEW	LEWIS, UNDA	4/1/2017	STIPEND \$150
CERTIFICATED	#TECHCONNECT TEACHER PROF DEV	MT. BAKER	LINDGREN, SHARON	4/1/2017	STIPEND \$150
CERTIFICATED	#TECHCONNECT TEACHER PROF DEV	DICK SCOBEE	LONG, MCKINZIE	4/1/2017	STIPEND \$150
CERTIFICATED	#TECHCONNECT TEACHER PROF DEV	DICK SCOBEE	LONG, STEPHANIE	4/1/2017	STIPEND \$150
CERTIFICATED	#TECHCONNECT TEACHER PROF DEV	MT. VIEW SR HI	LORRAIN, KAY	4/1/2017	STIPEND \$150
CERTIFICATED	#TECHCONNECT TEACHER PROF DEV	EVERGREEN HTS	LOUIE, ALISA	4/1/2017	STIPEND \$150
CERTIFICATED	#TECHCONNECT TEACHER PROF DEV	MT. BAKER	LUBASH, DENNIS	4/1/2017	STIPEND \$150
CERTIFICATED	#TECHCONNECT TEACHER PROF DEV	CASCADE	LUETTGEN, SANDRA	4/1/2017	STIPEND \$150
CERTIFICATED	#TECHCONNECT TEACHER PROF DEV	RAINIER	LUONG, JACOB	4/1/2017	STIPEND \$150
CERTIFICATED	#TECHCONNECT TEACHER PROF DEV	LAKE VIEW	LUTES-JOHNSON, TRINA	4/1/2017	STIPEND \$150
CERTIFICATED	#TECHCONNECT TEACHER PROF DEV	DICK SCOBEE	LYSENE, SARAH	4/1/2017	STIPEND \$150
CERTIFICATED	#TECHCONNECT TEACHER PROF DEV	AUB RIVERSIDE	MALONE, CORIN	4/1/2017	STIPEND \$150
CERTIFICATED	#TECHCONNECT TEACHER PROF DEV	LAKELAND HILLS	MALONEY, KELLY	4/1/2017	STIPEND \$150
CERTIFICATED	#TECHCONNECT TEACHER PROF DEV	ARTHUR JACOBSEN	MANCHIK, CHRISTINA	4/1/2017	STIPEND \$150
CERTIFICATED	#TECHCONNECT TEACHER PROF DEV	RAINIER	MARIA, DENISE	4/1/2017	STIPEND \$150
CERTIFICATED	#TECHCONNECT TEACHER PROF DEV	WASHINGTON	MARSHALL, ANNA K.	4/1/2017	STIPEND \$150
CERTIFICATED	#TECHCONNECT TEACHER PROF DEV	ILALCO	MARTIN, MICHAEL	4/1/2017	STIPEND \$150
CERTIFICATED	#TECHCONNECT TEACHER PROF DEV	OLYMPIC	MASON, JERI	4/1/2017	STIPEND \$150
CERTIFICATED	#TECHCONNECT TEACHER PROF DEV	ARTHUR JACOBSEN	MATE, RHONDA	4/1/2017	STIPEND \$150
CERTIFICATED	#TECHCONNECT TEACHER PROF DEV	PIONEER	MATTIOLI, STEVEN	4/1/2017	STIPEND \$150
CERTIFICATED	#TECHCONNECT TEACHER PROF DEV	OLYMPIC	MATZ, MORGAN	4/1/2017	STIPEND \$150
CERTIFICATED	#TECHCONNECT TEACHER PROF DEV	CHINOOK	MCCAUSLAND, CYNTHIA	4/1/2017	STIPEND \$150
CERTIFICATED	#TECHCONNECT TEACHER PROF DEV	PIONEER	MCCRABB, MOLLI	4/1/2017	STIPEND \$150
CERTIFICATED	#TECHCONNECT TEACHER PROF DEV	EVERGREEN HTS	MCENTYRE, MICHELLE	4/1/2017	STIPEND \$150
CERTIFICATED	#TECHCONNECT TEACHER PROF DEV	EVERGREEN HTS	MCGRAW, DEBORAH	4/1/2017	STIPEND \$150
CERTIFICATED	#TECHCONNECT TEACHER PROF DEV	MT. BAKER	MCGRAW, JODI	4/1/2017	STIPEND \$150
CERTIFICATED	#TECHCONNECT TEACHER PROF DEV	ILALCO	MCKEEVER, ALLISON	4/1/2017	STIPEND \$150
CERTIFICATED	#TECHCONNECT TEACHER PROF DEV	PIONEER	MCKINLEY, MICHAEL	4/1/2017	STIPEND \$150
CERTIFICATED	#TECHCONNECT TEACHER PROF DEV	OLYMPIC	MEINHART, DORIN	4/1/2017	STIPEND \$150
CERTIFICATED	#TECHCONNECT TEACHER PROF DEV	LAKE VIEW	MERTENS, SHERI	4/1/2017	STIPEND \$150
CERTIFICATED	#TECHCONNECT TEACHER PROF DEV	MT. BAKER	MILLANG, SUSAN	4/1/2017	STIPEND \$150
CERTIFICATED	#TECHCONNECT TEACHER PROF DEV	LAKE VIEW	MILLGARD, JANET	4/1/2017	STIPEND \$150
CERTIFICATED	#TECHCONNECT TEACHER PROF DEV	TERMINAL PARK	MISCHKE, EMILY	4/1/2017	STIPEND \$150
CERTIFICATED	#TECHCONNECT TEACHER PROF DEV	ALPAC	MODEN, JESSICA	4/1/2017	STIPEND \$150
CERTIFICATED	#TECHCONNECT TEACHER PROF DEV	CHINOOK	MONROE, STEPHANIE	4/1/2017	STIPEND \$150
CERTIFICATED	#TECHCONNECT TEACHER PROF DEV	CHINOOK	MONTIEL, MAGDALENA	4/1/2017	STIPEND \$150
CERTIFICATED	#TECHCONNECT TEACHER PROF DEV	ARTHUR JACOBSEN	MOONEY, KATHLEEN	4/1/2017	STIPEND \$150
CERTIFICATED	#TECHCONNECT TEACHER PROF DEV	ILALCO	MOORE, ERIKA	4/1/2017	STIPEND \$150
CERTIFICATED	#TECHCONNECT TEACHER PROF DEV	AUB RIVERSIDE	MORGAN, ROBERT	4/1/2017	STIPEND \$150
CERTIFICATED	#TECHCONNECT TEACHER PROF DEV	ILALCO	MYKA, TAMMY	4/1/2017	STIPEND \$150
CERTIFICATED	#TECHCONNECT TEACHER PROF DEV	ARTHUR JACOBSEN	NELSON, MICHELLE D	4/1/2017	STIPEND \$150
CERTIFICATED	#TECHCONNECT TEACHER PROF DEV	LAKELAND HILLS	NELSON, MICHELLE LP	4/1/2017	STIPEND \$150
CERTIFICATED	#TECHCONNECT TEACHER PROF DEV	AUB RIVERSIDE	NEWCOMB, AKIKO	4/1/2017	STIPEND \$150
CERTIFICATED	#TECHCONNECT TEACHER PROF DEV	OLYMPIC	NEWMAN, MELISSA	4/1/2017	STIPEND \$150
CERTIFICATED	#TECHCONNECT TEACHER PROF DEV	CHINOOK	NISSEN-HANEY, JACQUELINE	4/1/2017	STIPEND \$150
CERTIFICATED	#TECHCONNECT TEACHER PROF DEV	OLYMPIC	NOMURA, DANIEL	4/1/2017	STIPEND \$150
CERTIFICATED	#TECHCONNECT TEACHER PROF DEV	RAINIER	OLSON, THOMAS	4/1/2017	STIPEND \$150
CERTIFICATED	#TECHCONNECT TEACHER PROF DEV	DICK SCOBEE	ORR, LACEY	4/1/2017	STIPEND \$150
CERTIFICATED	#TECHCONNECT TEACHER PROF DEV	AUBURN HIGH	OWENS, BESS	4/1/2017	STIPEND \$150
CERTIFICATED	#TECHCONNECT TEACHER PROF DEV	LAKELAND HILLS	PETERS, TRINA	4/1/2017	STIPEND \$150
CERTIFICATED	#TECHCONNECT TEACHER PROF DEV	WASHINGTON	PETTIT, JULIE	4/1/2017	STIPEND \$150
CERTIFICATED	#TECHCONNECT TEACHER PROF DEV	DICK SCOBEE	PFAB, TIMOTHY	4/1/2017	STIPEND \$150
CERTIFICATED	#TECHCONNECT TEACHER PROF DEV	ALPAC	PHAY, CHRISTIAN	4/1/2017	STIPEND \$150
CERTIFICATED	#TECHCONNECT TEACHER PROF DEV	EVERGREEN HTS	PHILLIPS, COLLEEN	4/1/2017	STIPEND \$150
CERTIFICATED	#TECHCONNECT TEACHER PROF DEV	ARTHUR JACOBSEN	PIERCE, SUROJIT	4/1/2017	STIPEND \$150
CERTIFICATED	#TECHCONNECT TEACHER PROF DEV	DICK SCOBEE	PLATA, BRIANNA	4/1/2017	STIPEND \$150

CERTIFICATED	#TECHCONNECT TEACHER PROF DEV	DICK SCOBEE	POMEROY, CATHERINE	4/1/2017	STIPEND \$150
CERTIFICATED	#TECHCONNECT TEACHER PROF DEV	OLYMPIC	PRICE, CHRISTY	4/1/2017	STIPEND \$150
CERTIFICATED	#TECHCONNECT TEACHER PROF DEV	AUBURN HIGH	PRICE, JON	4/1/2017	STIPEND \$150
CERTIFICATED	#TECHCONNECT TEACHER PROF DEV	MT. VIEW SR HI	PYLE, DEREK	4/1/2017	STIPEND \$150
CERTIFICATED	#TECHCONNECT TEACHER PROF DEV	OLYMPIC	RAMIREZ-DILLARD, REBECCA	4/1/2017	STIPEND \$150
CERTIFICATED	#TECHCONNECT TEACHER PROF DEV	RAINIER	RASMUSSEN, DAWN	4/1/2017	STIPEND \$150
CERTIFICATED	#TECHCONNECT TEACHER PROF DEV	EVERGREEN HTS	RAY, ELAINE	4/1/2017	STIPEND \$150
CERTIFICATED	#TECHCONNECT TEACHER PROF DEV	CASCADE	REAVIS, TIMOTHY	4/1/2017	STIPEND \$150
CERTIFICATED	#TECHCONNECT TEACHER PROF DEV	AUBURN HIGH	REINHARDT, CARMEN	4/1/2017	STIPEND \$150
CERTIFICATED	#TECHCONNECT TEACHER PROF DEV	LEA HILL	RHODES, CATHERINE	4/1/2017	STIPEND \$150
CERTIFICATED	#TECHCONNECT TEACHER PROF DEV	TERMINAL PARK	ROBBINS, BARBARA	4/1/2017	STIPEND \$150
CERTIFICATED	#TECHCONNECT TEACHER PROF DEV	EVERGREEN HTS	ROBELLO, BRITTANY	4/1/2017	STIPEND \$150
CERTIFICATED	#TECHCONNECT TEACHER PROF DEV	DICK SCOBEE	ROBINSON, SANDRA	4/1/2017	STIPEND \$150
CERTIFICATED	#TECHCONNECT TEACHER PROF DEV	RAINIER	ROCK, MICHELE	4/1/2017	STIPEND \$150
CERTIFICATED	#TECHCONNECT TEACHER PROF DEV	AUB RIVERSIDE	ROHLFF, GERI	4/1/2017	STIPEND \$150
CERTIFICATED	#TECHCONNECT TEACHER PROF DEV	PIONEER	ROWE, DANIELA	4/1/2017	STIPEND \$150
CERTIFICATED	#TECHCONNECT TEACHER PROF DEV	DICK SCOBEE	RUDE, MELISSA	4/1/2017	STIPEND \$150
CERTIFICATED	#TECHCONNECT TEACHER PROF DEV	EVERGREEN HTS	RUFFNER-MILLER, KYLEY	4/1/2017	STIPEND \$150
CERTIFICATED	#TECHCONNECT TEACHER PROF DEV	ANNEX	RUPP, TERI	4/1/2017	STIPEND \$150
CERTIFICATED	#TECHCONNECT TEACHER PROF DEV	MT. BAKER	RYAN, KEEGAN	4/1/2017	STIPEND \$150
CERTIFICATED	#TECHCONNECT TEACHER PROF DEV	AUB RIVERSIDE	SALOY, DAMIAH	4/1/2017	STIPEND \$150
CERTIFICATED	#TECHCONNECT TEACHER PROF DEV	EVERGREEN HTS	SAMUELSON, DAVID	4/1/2017	STIPEND \$150
CERTIFICATED	#TECHCONNECT TEACHER PROF DEV	AUB RIVERSIDE	SANDLAND, GINA	4/1/2017	STIPEND \$150
CERTIFICATED	#TECHCONNECT TEACHER PROF DEV	WEST AUBURN	SANDO, MICHAEL	4/1/2017	STIPEND \$150
CERTIFICATED	#TECHCONNECT TEACHER PROF DEV	DICK SCOBEE	SCHOLZEN, JULIE	4/1/2017	STIPEND \$150
CERTIFICATED	#TECHCONNECT TEACHER PROF DEV	LAKELAND HILLS	SCHUMAN, SUSAN	4/1/2017	STIPEND \$150
CERTIFICATED	#TECHCONNECT TEACHER PROF DEV	LEA HILL	SEARS, STACY	4/1/2017	STIPEND \$150
CERTIFICATED	#TECHCONNECT TEACHER PROF DEV	GILDO REY	SELLERS, KAITLYN	4/1/2017	STIPEND \$150
CERTIFICATED	#TECHCONNECT TEACHER PROF DEV	LAKELAND HILLS	SERGIS, MELISSA	4/1/2017	STIPEND \$150
CERTIFICATED	#TECHCONNECT TEACHER PROF DEV	LAKE VIEW	SHEEHAN, LORI	4/1/2017	STIPEND \$150
CERTIFICATED	#TECHCONNECT TEACHER PROF DEV	GILDO REY	SHEMCHUK, NATALYA	4/1/2017	STIPEND \$150
CERTIFICATED	#TECHCONNECT TEACHER PROF DEV	OLYMPIC	SHERIN, TRACY	4/1/2017	STIPEND \$150
CERTIFICATED	#TECHCONNECT TEACHER PROF DEV	CHINOOK	SIGNAL, MICHAEL	4/1/2017	STIPEND \$150
CERTIFICATED	#TECHCONNECT TEACHER PROF DEV	LAKE VIEW	SINGER, CYNTHIA	4/1/2017	STIPEND \$150
CERTIFICATED	#TECHCONNECT TEACHER PROF DEV	LEA HILL	SLATT-MAXWELL, MELISSA	4/1/2017	STIPEND \$150
CERTIFICATED	#TECHCONNECT TEACHER PROF DEV	CHINOOK	SNYDER, LYNNE	4/1/2017	STIPEND \$150
CERTIFICATED	#TECHCONNECT TEACHER PROF DEV	MT. VIEW SR HI	SOHLSTROM, JULIE	4/1/2017	STIPEND \$150
CERTIFICATED	#TECHCONNECT TEACHER PROF DEV	RAINIER	SOWARDS, JESSLYNN	4/1/2017	STIPEND \$150
CERTIFICATED	#TECHCONNECT TEACHER PROF DEV	DICK SCOBEE	SPEARS, LINDSAY	4/1/2017	STIPEND \$150
CERTIFICATED	#TECHCONNECT TEACHER PROF DEV	ILALKO	SPENCE, BREANN	4/1/2017	STIPEND \$150
CERTIFICATED	#TECHCONNECT TEACHER PROF DEV	ARTHUR JACOBSEN	SPENCER JR., ARTHUR	4/1/2017	STIPEND \$150
CERTIFICATED	#TECHCONNECT TEACHER PROF DEV	MT. VIEW SR HI	STENSON, KIMBERLY	4/1/2017	STIPEND \$150
CERTIFICATED	#TECHCONNECT TEACHER PROF DEV	EVERGREEN HTS	STENSON, RIKKI	4/1/2017	STIPEND \$150
CERTIFICATED	#TECHCONNECT TEACHER PROF DEV	OLYMPIC	STODDARD, DOUGLAS	4/1/2017	STIPEND \$150
CERTIFICATED	#TECHCONNECT TEACHER PROF DEV	CHINOOK	STRICKLAND, BRANDY	4/1/2017	STIPEND \$150
CERTIFICATED	#TECHCONNECT TEACHER PROF DEV	OLYMPIC	STROBEL, KIMBERLY	4/1/2017	STIPEND \$150
CERTIFICATED	#TECHCONNECT TEACHER PROF DEV	LAKE VIEW	SUKERT, CARRIE	4/1/2017	STIPEND \$150
CERTIFICATED	#TECHCONNECT TEACHER PROF DEV	PIONEER	SUTCLIFF, JODI	4/1/2017	STIPEND \$150
CERTIFICATED	#TECHCONNECT TEACHER PROF DEV	PIONEER	SZYMAWSKI, ARLENE	4/1/2017	STIPEND \$150
CERTIFICATED	#TECHCONNECT TEACHER PROF DEV	ARTHUR JACOBSEN	TAYLOR, TIFFANY	4/1/2017	STIPEND \$150
CERTIFICATED	#TECHCONNECT TEACHER PROF DEV	MT. BAKER	THORINGTON, CHRISTINE	4/1/2017	STIPEND \$150
CERTIFICATED	#TECHCONNECT TEACHER PROF DEV	MT. BAKER	TOY, DIXIE	4/1/2017	STIPEND \$150
CERTIFICATED	#TECHCONNECT TEACHER PROF DEV	RAINIER	TURNER, HAYLEY	4/1/2017	STIPEND \$150
CERTIFICATED	#TECHCONNECT TEACHER PROF DEV	TERMINAL PARK	UFFALUSSY LAFAYETTE, LESLI	4/1/2017	STIPEND \$150
CERTIFICATED	#TECHCONNECT TEACHER PROF DEV	CASCADE	UPSHAW-YAZZIE, NORMA	4/1/2017	STIPEND \$150
CERTIFICATED	#TECHCONNECT TEACHER PROF DEV	PIONEER	VERLANDER, MELISSA	4/1/2017	STIPEND \$150
CERTIFICATED	#TECHCONNECT TEACHER PROF DEV	CASCADE	WATKINS-GATLIN, KANIKA	4/1/2017	STIPEND \$150
CERTIFICATED	#TECHCONNECT TEACHER PROF DEV	GILDO REY	WATSON, JAMIE	4/1/2017	STIPEND \$150
CERTIFICATED	#TECHCONNECT TEACHER PROF DEV	PIONEER	WELSH, SHAWN	4/1/2017	STIPEND \$150
CERTIFICATED	#TECHCONNECT TEACHER PROF DEV	DICK SCOBEE	WEYGINT, KERI	4/1/2017	STIPEND \$150
CERTIFICATED	#TECHCONNECT TEACHER PROF DEV	LAKE VIEW	WHITE, BETH	4/1/2017	STIPEND \$150
CERTIFICATED	#TECHCONNECT TEACHER PROF DEV	HAZELWOOD	WICKSTROM, ERIN	4/1/2017	STIPEND \$150
CERTIFICATED	#TECHCONNECT TEACHER PROF DEV	HAZELWOOD	WICKSTROM, SCOTT	4/1/2017	STIPEND \$150
CERTIFICATED	#TECHCONNECT TEACHER PROF DEV	DICK SCOBEE	WISENER, AIMEE	4/1/2017	STIPEND \$150
CERTIFICATED	#TECHCONNECT TEACHER PROF DEV	MT. VIEW SR HI	WOOD, RICHARD	4/1/2017	STIPEND \$150
CERTIFICATED	#TECHCONNECT TEACHER PROF DEV	ALPAC	WOODRUFF, JILLYAN	4/1/2017	STIPEND \$150
CERTIFICATED	#TECHCONNECT TEACHER PROF DEV	GILDO REY	WRASPIR, SUSAN	4/1/2017	STIPEND \$150
CERTIFICATED	#TECHCONNECT TEACHER PROF DEV	HAZELWOOD	ZABRISKIE, SUZANNE	4/1/2017	STIPEND \$150
CERTIFICATED	CAMP AUBURN INSTRUCTIONAL DIRECTOR	HAZELWOOD	FISHER, ANNE	5/2/2017	STIPEND \$893
CERTIFICATED	CAMP AUBURN INSTRUCTIONAL DIRECTOR	GILDO REY	GOODLETT, TRAVIS	5/16/2017	STIPEND \$893
CERTIFICATED	CAMP AUBURN INSTRUCTIONAL DIRECTOR	CASCADE	LUETTGEN, SANDRA	4/25/2017	STIPEND \$893
CERTIFICATED	CAMP AUBURN INSTRUCTIONAL DIRECTOR	WASHINGTON	MARKWELL, JOHN	6/6/2017	STIPEND \$893
CERTIFICATED	CAMP AUBURN PROGRAM DIRECTOR	HAZELWOOD	CHRISTIANSEN, STEPHEN	4/25/2017	STIPEND \$1178
CERTIFICATED	CAREER CONF MENTOR STIPEND	MT. VIEW SR HI	CALHOUN, STEVEN	3/21/2017	STIPEND \$300
CERTIFICATED	CAREER CONF MENTOR STIPEND	AUBURN HIGH	COLE, BRANDI	3/21/2017	STIPEND \$300
CERTIFICATED	CAREER CONF MENTOR STIPEND	MT. VIEW SR HI	DAVIDSON, CARY	3/21/2017	STIPEND \$300
CERTIFICATED	CAREER CONF MENTOR STIPEND	MT. VIEW SR HI	ENZ, DEREK	3/21/2017	STIPEND \$300
CERTIFICATED	CAREER CONF MENTOR STIPEND	AUB RIVERSIDE	JENSEN, KELLY	3/21/2017	STIPEND \$300
CERTIFICATED	CAREER CONF MENTOR STIPEND	WEST AUBURN	MELANSON, JOSHUA	3/21/2017	STIPEND \$300
CERTIFICATED	CAREER CONF MENTOR STIPEND	AUBURN HIGH	PARSONS, KRISTA	3/21/2017	STIPEND \$300
CERTIFICATED	CAREER CONF MENTOR STIPEND	AUBURN HIGH	PRATT, CINDY	3/21/2017	STIPEND \$300
CERTIFICATED	CAREER CONF MENTOR STIPEND	AUBURN HIGH	STUBBLEFIELD, ANGELA	3/21/2017	STIPEND \$150
CERTIFICATED	CAREER CONF MENTOR STIPEND	AUB RIVERSIDE	WRIGHT, TIMOTHY	3/21/2017	STIPEND \$300
CERTIFICATED	CERT INTERVIEW TEAM	RAINIER	LIGHT, ROBIN	4/6/2017	4.25 \$48.01
CERTIFICATED	CERT INTERVIEW TEAM	RAINIER	REMPFER, SONYA	4/6/2017	4.25 \$48.01
CERTIFICATED	CERT INTERVIEW TEAM	RAINIER	SOHAL, BALJINDER	4/6/2017	4.25 \$43.93
CERTIFICATED	CERT INTERVIEW TEAM	RAINIER	THOMAS, CHARLES	4/6/2017	4.25 \$53.40
CERTIFICATED	CLEAN OUT CLASSROOM	ANNEX	HERREN, JULIE	3/28/2017	14 \$50.13
CERTIFICATED	CLEAN OUT CLASSROOM	AUBURN HIGH	KEMP, CYNTHIA	3/23/2017	14 \$53.40
CERTIFICATED	CLEAN OUT CLASSROOM	RAINIER	LUDWIGSON, CHRISTINE	3/20/2017	14 \$50.37
CERTIFICATED	CLEAN OUT CLASSROOM	AUBURN HIGH	MORRIS, BRUCE	3/23/2017	14 \$53.40
CERTIFICATED	CLEAN OUT CLASSROOM	ANNEX	QUALLS, VERNE	3/1/2017	14 \$53.40
CERTIFICATED	CLEAN OUT CLASSROOM	ANNEX	SCHNEIDER, JANET	3/1/2017	14 \$48.01

CERTIFICATED	COLLEGE BOARD ASSESSMENT	MT. VIEW SR HI	GLENISKY, STEPHANIE	3/31/2017	27.7	\$48.05
CERTIFICATED	COLLEGE BOARD ASSESSMENT	AUB RIVERSIDE	HARTT, SAMUEL	3/31/2017	5	\$53.40
CERTIFICATED	COLLEGE BOARD ASSESSMENT	MT. VIEW SR HI	LEMANSKI, MELISSA	3/31/2017	4	\$34.34
CERTIFICATED	COLLEGE BOARD ASSESSMENT	MT. VIEW SR HI	LEMANSKI, NATHAN	3/31/2017	1	\$39.11
CERTIFICATED	COLLEGE BOARD ASSESSMENT	AUB RIVERSIDE	MCKEEHAN, JANALYN	3/31/2017	5	\$53.40
CERTIFICATED	COLLEGE BOARD ASSESSMENT	AUB RIVERSIDE	MEAD, STEVEN	3/31/2017	10	\$53.40
CERTIFICATED	COLLEGE BOARD ASSESSMENT	AUB RIVERSIDE	MONSEN, ANDREW	3/31/2017	8	\$53.40
CERTIFICATED	COLLEGE BOARD ASSESSMENT	AUB RIVERSIDE	NISHIMOTO, KEVIN	3/31/2017	1	\$36.24
CERTIFICATED	COLLEGE BOARD ASSESSMENT	AUB RIVERSIDE	OLSON, KEVIN L	3/31/2017	5	\$53.40
CERTIFICATED	COLLEGE BOARD ASSESSMENT	MT. VIEW SR HI	SHRADER, JASON	3/31/2017	2	\$45.96
CERTIFICATED	COLLEGE BOARD ASSESSMENT	AUB RIVERSIDE	STRAND, BRYCE	3/31/2017	5	\$52.35
CERTIFICATED	COMPUTER SCIENCE CLASSROOM VISIT	ARTHUR JACOBSEN	COVEY, ERICA	4/4/2017	3	\$37.65
CERTIFICATED	CTSO LEADERSHIP COMP PREP	AUB RIVERSIDE	AUBERT, DOUGLAS	11/1/2016	35	\$53.40
CERTIFICATED	CTSO LEADERSHIP COMP PREP	MT. VIEW SR HI	CALHOUN, STEVEN	11/1/2016	35	\$53.40
CERTIFICATED	CTSO LEADERSHIP COMP PREP	MT. VIEW SR HI	ECKELMAN, PATRICIA	11/1/2016	35	\$53.40
CERTIFICATED	CTSO LEADERSHIP COMP PREP	AUBURN HIGH	EDWARDS, KURT	11/1/2016	35	\$36.98
CERTIFICATED	CTSO LEADERSHIP COMP PREP	AUBURN HIGH	FOSS, JARRED	11/1/2016	35	\$35.88
CERTIFICATED	CTSO LEADERSHIP COMP PREP	AUBURN HIGH	KURKA, RONDA	11/1/2016	35	\$48.04
CERTIFICATED	CTSO LEADERSHIP COMP PREP	MT. VIEW SR HI	LOCKE, ROBERTA	11/1/2016	35	\$36.42
CERTIFICATED	CTSO LEADERSHIP COMP PREP	AUBURN HIGH	MCCARLEY, JOHN	11/1/2016	35	\$45.97
CERTIFICATED	CTSO LEADERSHIP COMP PREP	AUB RIVERSIDE	MEDINA, FRANK	11/1/2016	35	\$53.40
CERTIFICATED	CTSO LEADERSHIP COMP PREP	AUBURN HIGH	PARSONS, KRISTA	11/1/2016	35	\$43.93
CERTIFICATED	CTSO LEADERSHIP COMP PREP	AUB RIVERSIDE	SANDLAND, GINA	11/1/2016	17.5	\$51.13
CERTIFICATED	CTSO LEADERSHIP COMP PREP	AUB RIVERSIDE	SANDLAND, TYLER	11/1/2016	17.5	\$33.15
CERTIFICATED	CTSO LEADERSHIP COMP PREP	AUB RIVERSIDE	SUMNER, WILLIAM	11/1/2016	35	\$53.40
CERTIFICATED	CTSO LEADERSHIP COMP PREP	AUBURN HIGH	TARSI, JANET	11/1/2016	35	\$35.25
CERTIFICATED	CTSO LEADERSHIP COMP PREP	AUB RIVERSIDE	WICKENS, JAMES	11/1/2016	35	\$53.40
CERTIFICATED	DISTRICT MENTOR PROGRAM	LAKE VIEW	STRICKLAND, BRANDY	9/7/2016		STIPEND \$200
CERTIFICATED	ELEMENTARY EXT DAY PROGRAM	GILDO REY	LORENZANO, ASHLEY	2/13/2017	5	\$37.65
CERTIFICATED	EXT. DAY PROGRAM	OLYMPIC	GUEST, JOANNA	3/1/2017	5	\$35.44
CERTIFICATED	EXTRA HOURS FOR SIP DAY	RAINIER	MORRIS, HEIDI	3/1/2017	21	\$63.50
CERTIFICATED	EXTRA HOURS FOR STUDENT CONFERENCING	ALPAC	BELL, TARA	3/30/2017	3	\$31.98
CERTIFICATED	EXTRA HOURS FOR STUDENT CONFERENCING	LEA HILL	HOUGLUM, ROSEMARY	3/30/2017	3	\$30.24
CERTIFICATED	EXTRA HOURS FOR STUDENT CONFERENCING	LEA HILL	LEAF-DENT, KATHERINE	3/30/2017	3	\$35.46
CERTIFICATED	EXTRA HOURS FOR STUDENT CONFERENCING	ALPAC	LEITZKE, STACY JO	3/30/2017	3	\$41.37
CERTIFICATED	EXTRA HOURS FOR STUDENT CONFERENCING	CHINOOK	LEWIS, JENNIFER	3/30/2017	3	\$35.85
CERTIFICATED	EXTRA HOURS FOR STUDENT CONFERENCING	LEA HILL	MARSHALL, LAURA	3/30/2017	3	\$36.52
CERTIFICATED	EXTRA HOURS FOR STUDENT CONFERENCING	GILDO REY	MATSUNO, MAKI	3/30/2017	3	\$53.40
CERTIFICATED	EXTRA HOURS FOR STUDENT CONFERENCING	DICK SCOBEE	MCCORMICK, LAUREL	3/30/2017	3	\$35.25
CERTIFICATED	EXTRA HOURS FOR STUDENT CONFERENCING	DICK SCOBEE	MEHEULA, LYNDA	3/30/2017	3	\$34.35
CERTIFICATED	EXTRA HOURS FOR STUDENT CONFERENCING	LAKE VIEW	SPEER, CHELSEY	3/30/2017	3	\$29.86
CERTIFICATED	EXTRA HOURS FOR STUDENT CONFERENCING	DICK SCOBEE	ST MARY, SARAH	3/30/2017	3	\$38.92
CERTIFICATED	HOME VISITS/CONFERENCES/PHONE CLLS	LEA HILL	BUTLER, REGINA	3/7/2017	28	\$50.37
CERTIFICATED	INVOLUNTARY ROOM MOVE	WASHINGTON	AGUILAR, JANIE	3/30/2017	14	\$29.86
CERTIFICATED	KINDERGARTEN TRANSITION SUPPORT	ILALKO	TENNER, TINA	9/1/2016	4	\$29.08
CERTIFICATED	LAP FAMILY NIGHT	ALPAC	GRAY, JUDY	3/30/2017	2	\$51.13
CERTIFICATED	MIDDLE SCHOOL MATH GAP SUPPORT	MT. BAKER	MILLANG, SUSAN	2/27/2017	13	\$53.40
CERTIFICATED	MS ALGEBRA AND GEOMETRY SUPPORT	WEST AUBURN	ELLER, CLAIRE	3/23/2017	26	\$34.08
CERTIFICATED	MS SCIENCE CONTENT TEAM MTGS	AUB RIVERSIDE	MALONE, CORIN	3/29/2017	40	\$46.63
CERTIFICATED	NCAA SENIOR LIT PLANNING	AUB RIVERSIDE	ROHLFF, GERI	12/1/2016	6	\$53.40
CERTIFICATED	PD FULLY REVISED SIP (TITLE)	RAINIER	CAMPBELL, MONICA	1/30/2017	0.5	\$53.40
CERTIFICATED	PD FULLY REVISED SIP (TITLE)	RAINIER	CHAVEZ, LUIS	1/30/2017	0.5	\$48.01
CERTIFICATED	PD FULLY REVISED SIP (TITLE)	RAINIER	DALOS, HARRIETT	1/30/2017	0.5	\$48.01
CERTIFICATED	PD FULLY REVISED SIP (TITLE)	RAINIER	DUNHAM, RYAN	1/30/2017	0.5	\$51.13
CERTIFICATED	PD FULLY REVISED SIP (TITLE)	RAINIER	ESPINOSA, MICHAEL	1/30/2017	2	\$31.99
CERTIFICATED	PD FULLY REVISED SIP (TITLE)	RAINIER	HARTEAU, NICHOLAS	1/30/2017	2	\$28.72
CERTIFICATED	PD FULLY REVISED SIP (TITLE)	RAINIER	LEWIS, BRENDA	1/30/2017	0.5	\$49.51
CERTIFICATED	PD FULLY REVISED SIP (TITLE)	RAINIER	LIGHT, ROBIN	1/30/2017	2	\$48.01
CERTIFICATED	PD FULLY REVISED SIP (TITLE)	RAINIER	LUDWIGSON, CHRISTINE	1/30/2017	2	\$50.37
CERTIFICATED	PD FULLY REVISED SIP (TITLE)	RAINIER	LUONG, JACOB	1/30/2017	2	\$53.40
CERTIFICATED	PD FULLY REVISED SIP (TITLE)	RAINIER	MARIA, DENISE	1/30/2017	2	\$36.52
CERTIFICATED	PD FULLY REVISED SIP (TITLE)	RAINIER	OLSON, THOMAS	1/30/2017	2	\$29.86
CERTIFICATED	PD FULLY REVISED SIP (TITLE)	RAINIER	RADCLIFF, BETH	1/30/2017	2	\$53.40
CERTIFICATED	PD FULLY REVISED SIP (TITLE)	RAINIER	REMPFER, SONYA	1/30/2017	2	\$48.01
CERTIFICATED	PD FULLY REVISED SIP (TITLE)	RAINIER	ROCK, MICHELE	1/30/2017	0.5	\$43.07
CERTIFICATED	PD FULLY REVISED SIP (TITLE)	RAINIER	SCHERER, KATHRYN	1/30/2017	2	\$45.91
CERTIFICATED	PD FULLY REVISED SIP (TITLE)	RAINIER	SNYDER, CHERYL	1/30/2017	0.5	\$53.40
CERTIFICATED	PD FULLY REVISED SIP (TITLE)	RAINIER	SOWARDS, JESSLYNN	1/30/2017	0.5	\$30.69
CERTIFICATED	PD FULLY REVISED SIP (TITLE)	RAINIER	TSAOUSSIS, ANGELENA	1/30/2017	0.5	\$36.92
CERTIFICATED	PD FULLY REVISED SIP (TITLE)	RAINIER	TURNER, HAYLEY	1/30/2017	2	\$48.01
CERTIFICATED	PD FULLY REVISED SIP (TITLE)	RAINIER	WILSON, CHRISTINE	1/30/2017	0.5	\$52.36
CERTIFICATED	PERF TASK SCORING PROF DEV	RAINIER	MARIA, DENISE	11/28/2016	8.5	\$36.52
CERTIFICATED	PLC PRESENTATION	AUB RIVERSIDE	BARDSLEY, STACY	3/27/2017	2	\$52.36
CERTIFICATED	PLC PRESENTATION	AUB RIVERSIDE	BARNETT, CAROL	3/27/2017	2	\$50.37
CERTIFICATED	PLC PRESENTATION	AUB RIVERSIDE	NEWCOMB, AKIKO	3/27/2017	2	\$31.99
CERTIFICATED	PROVIDE PD FOR SLC STAFF	AUBURN HIGH	RUPP, TERI	3/10/2017	50	\$48.06
CERTIFICATED	PROVIDE SERVICES IEP CASE MGMT	ANNEX	RICHARDSON, MOLLY	3/23/2017	8	\$36.24
CERTIFICATED	SUPPORT FOR STUDENTS-ELA/MATH	AUBURN HIGH	HAZEL, COLLEEN	3/22/2017	35	STIPEND \$200
CERTIFICATED	TUTORING	ANNEX	SOHLSTROM, JULIE	3/20/2017	15	\$30.65
Leave						
CERTIFICATED	4TH GRADE (.5)	LAKE VIEW	GWIN, BRANDI	9/6/2017		RELOCATION
New Hire						
CERTIFICATED	2ND GRADE (.5)	LAKELAND HILLS	BAILLY, KARISSA	9/6/2017		C1, S5
CERTIFICATED	4TH GRADE	GILDO REY	BORISHKEVICH, VICTORIA	9/6/2017		C1, S0
CERTIFICATED	4TH GRADE	ALPAC	PEREZ, ANGELIQUE	9/6/2017		C4, S0
CERTIFICATED	5TH GRADE	HAZELWOOD	BRENLAN, HANNAH	9/6/2017		C4, S0
CERTIFICATED	5TH GRADE	DICK SCOBEE	CROWDER, CYNTHIA	9/6/2017		C9, S16
CERTIFICATED	5TH GRADE	LAKELAND HILLS	GRUALVA, AMY	9/6/2017		C9, S18
CERTIFICATED	E-SPEC ED	HAZELWOOD	MCQUISTON, CASSIDY	9/6/2017		C1, S0
CERTIFICATED	M-FASCE	CASCADE	SIROTZKI, MEGAN	9/6/2017		C1, S0
CERTIFICATED	M-SOCIAL STUDIES	RAINIER	MONTGOMERY, MORIO	9/6/2017		C4, S0

CERTIFICATED	OT	ANNEX	ALEXANDER, BRANDY	9/6/2017	C7, S3
CERTIFICATED	PSYCHOLOGIST	ANNEX	HORTON, NARELLE	9/6/2017	C9, S13
CERTIFICATED	SLP (.8)	ANNEX	ELDRIDGE, KEVIN	9/6/2017	C9, S12
CERTIFICATED	S-MATH	AUBURN HIGH	BURKHAUSER, KATHARINE	9/6/2017	C7, S0
CERTIFICATED	SPECIAL EDUCATION	TBD	BAUNACH, JAYMIE	9/6/2017	C1, S0
CERTIFICATED	S-SPEC ED	AUB RIVERSIDE	EVANS, ANDRAE	9/6/2017	C7, S2
CERTIFICATED	S-SPEC ED	MT. VIEW SR HIGH	O'ROURKE, SHANNON	9/6/2017	C7, S0
CERTIFICATED	TBD	LEA HILL	CARDENAS, GINA	9/6/2017	C1, S2
CERTIFICATED	TBD	CHINOOK	DOWNS, COURTNEY	9/6/2017	C8, S10
Resignation					
	CERTIFICATED M-MATH (.6)	OLYMPIC	CHOI, DEBORAH	6/23/2017	RELOCATION

# PERSONNEL REPORT - CLASSIFIED

## Curriculum-Noncurriculum

CLASSIFIED	ACCOMPANIST - CHOIR (ASB)	MT. BAKER	CARMAN, BARBARA	4/3/2017	20	\$20.00
CLASSIFIED	ACCOMPANIST - CHOIR (ASB)	MT. BAKER	WARDELL, MONSEN, TIA	4/3/2017	20	\$20.00
CLASSIFIED	ASSISTANT COACH - VOLLEYBALL	MT BAKER	BOYD, JASON	4/17/2017	150	STIPEND - \$3494
CLASSIFIED	ASSISTANT COACH - VOLLEYBALL	CASCADE	KANDA, ROSE	4/17/2017	150	STIPEND - \$3494
CLASSIFIED	ASSISTANT COACH - BOYS TRACK	CASCADE	QUITENO, KEVIN	4/17/2017	150	STIPEND - \$2697
CLASSIFIED	CATERING - TECH TRAINING (ASB)	AUB RIVERSIDE	CARTWRIGHT, JENAE	4/1/2017	15	\$28.72
CLASSIFIED	EXTRA HOURS - AP PROCTOR	DEPT STDNT LRNG	DAUMIT, ELISABETH	3/31/2017	27	\$20.19
CLASSIFIED	EXTRA HOURS - AP PROCTOR	DEPT STDNT LRNG	LEWIS, DEREK	3/31/2017	2	\$35.07
CLASSIFIED	EXTRA HOURS - EXTENDED LEARNING PROGRAM	OLYMPIC	DEARINGER, DIRK	3/13/2017	16	\$18.43
CLASSIFIED	EXTRA HOURS - LAP FAMILY NIGHT	ALPAC	NEAL, JESARAE	3/30/2017	2	\$18.10
CLASSIFIED	EXTRA HOURS - LAP FAMILY NIGHT	ALPAC	OSBORNE, MARTA	3/30/2017	2	\$18.44
CLASSIFIED	EXTRA HOURS - LAP FAMILY NIGHT	ALPAC	SKAAR, DARLI	3/30/2017	2	\$18.44
CLASSIFIED	EXTRA HOURS - LAP FAMILY NIGHT	ALPAC	SOWARDS, TRACI	3/30/2017	2	\$18.44
CLASSIFIED	EXTRA HOURS - LAP FAMILY NIGHT	ALPAC	STAAR, DIANE	3/30/2017	2	\$18.10
CLASSIFIED	HEAD COACH - VOLLEYBALL	MT BAKER	ARIAS, ELIS	4/17/2017	150	STIPEND - \$4010
CLASSIFIED	INTERVIEW TEAM	HUMAN RESOURCES	BLOOM, JANET	4/6/2017	3.5	\$23.08
CLASSIFIED	TRACK COACH- 6TH GRADE	RAINIER	REAGAN, STEVEN	4/24/2017	40	STIPEND - \$794
CLASSIFIED	VOLLEYBALL COACH- 6TH GRADE	CASCADE	OWENS, JEANETTE	4/24/2017	40	STIPEND - \$728

## New Hire

CLASSIFIED	ASSISTANT COOK	ARTHUR JACOBSEN	VALDESPINO, BEATRIZ	3/29/2017	3.25	\$16.20 QUALIFIED APPLICANT
CLASSIFIED	P-CISA	MT. BAKER	MOSER, SARAH	4/17/2017	4	\$17.73 QUALIFIED APPLICANT

## Rehire

## Resignation

CLASSIFIED	ASSISTANT COOK	LAKE VIEW	GATES, JAMES	4/7/2017		EMPLOYMENT ELSEWHERE
CLASSIFIED	ASSISTANT COOK	ARTHUR JACOBSEN	GLEASON, LISA	3/24/2017		EMPLOYMENT ELSEWHERE
CLASSIFIED	ASSISTANT COOK	LEA HILL	LAMBERT, HEIDI	4/3/2017		PERSONAL
CLASSIFIED	HEAD CHEER COACH	AUBURN SR HI	WAKEFIELD, REINA	3/31/2017		PERSONAL
CLASSIFIED	K-KITCHEN MGR CUL ART	AUB RIVERSIDE	DAHLSTEDT, LISA	6/23/2017		RETIREMENT
CLASSIFIED	P-HEALTH ROOM	LAKE VIEW	BLAZER, CHRISTINE	6/26/2017		PERSONAL
CLASSIFIED	P-HEALTH ROOM	OLYMPIC	SKINNER, CAROL	6/28/2017		RETIREMENT



## CERTIFICATED RESUMES

Brandy Alexander-occupational therapist-Administrative Annex. Ms. Alexander earned her bachelor degree at Pacific Lutheran University and her master degree at the University of St. Augustine. Brandy previously worked in Escondido, California.

Karissa Bailly-second grade (.5)-Lakeland Hills Elementary. Ms. Bailly earned her bachelor degree at Indiana University. Karissa has been a substitute in the Auburn School District

Jaymie Baunach-special education-TBD. Ms. Baunach earned her bachelor degree at Western Washington University. Jaymie has recently completed her student teaching and is an Auburn Riverside High School graduate.

Victoria Borishkevich-fourth grade-Gildo Rey Elementary. Ms. Borishkevich earned her bachelor degree at Central Washington University. Victoria has recently completed her student teaching.

Hannah Brenlan-fifth grade-Hazelwood Elementary. Ms. Brenlan earned her bachelor degree at DePaul University. Hannah has recently completed her student teaching.

Katharine Burkhauser-math-Auburn High School. Ms. Burkhauser earned her bachelor and master degrees at the University of Washington. Katie has recently completed her student teaching and is an Auburn Mountainview High School graduate.

Gina Cardenas-grade TBD-Lea Hill Elementary. Ms. Cardenas earned her bachelor degree at St. Martins University. Gina previously worked in the Kent School District and she is an Auburn Riverside High School graduate.

Cynthia Crowder-fifth grade-Dick Scobee Elementary. Ms. Crowder earned her bachelor degree at Western Washington University and her master degree at the University of Louisiana. Cynthia has been teaching out of the country.

Courtney Downs-grade TBD-Chinook Elementary. Ms. Downs earned her bachelor degree at the University of Washington and her master degree at City University. Courtney previously worked for the Federal Way School District.

Kevin Eldridge-SLP (.8)-Administrative Annex. Mr. Eldridge earned his bachelor degree at Wittenberg University, master degree at Emerson College, and his PhD at the University of Pittsburgh. Kevin has been in private practice.

Andrae Evans-special education-Auburn Riverside High School. Mr. Evans earned his bachelor degree at the University of Washington and his master degree at Pacific Lutheran University. Andrae previously worked for the Puyallup School District.

Amy Grijalva-fifth grade-Lakeland Hills. Ms. Grijalva earned her bachelor degree at Western Washington University and her master degree at Grand Canyon University. Amy previously worked for the Sumner School District.

Narelle Horton-psychologist-Administrative Annex. Ms. Horton earned her bachelor degree at Avondale College and her master degree at Loma Linda University. Narelle previously worked at Northwest Christian School.

Cassidy McQuiston-special education-Hazelwood Elementary. Ms. McQuiston earned her bachelor degree at Western Washington University. Cassidy has recently completed her student teaching.

Morio Montgomery-social studies-Rainier Middle School. Mr. Montgomery earned his bachelor degree at the University of Washington. Morio has recently completed his student teaching.

Shannon O'Rourke-special education-Auburn Mountainview High School. Ms. O'Rourke earned her bachelor degree at Green Mountain College and her master degree at Seattle University. Ms. O'Rourke has recently completed her student teaching.

Angelique Perez-fourth grade-Alpac Elementary. Ms. Perez earned her bachelor degree at Western Washington University. Angelique has been a para-educator in the Auburn School District.

Megan Sirotzki-family consumer science-Cascade Middle School. Ms. Sirotzki earned her bachelor degree at Washington State University. Megan has recently completed her student teaching.

1. Rejection of Bid - Support Services Center Improvements

Recommendation: That the bid for the Support Services Center Improvements project be rejected.

Recommendation: That authorization be given to call for bids for the Administration Building Exterior Caulk Replacement project.

## FINANCE

## 1. Vouchers

Vouchers will be presented.

Recommendation: That these vouchers be signed.

## 2. Award of Contract-Bid 651-High School Yearbooks

After a comprehensive analysis by high school yearbook advisors that incorporates base bid prices and the various options deemed probable for use in their upcoming yearbooks, it is recommended that the contract to furnish yearbooks for the 2017-18 school year be awarded to the lowest responsive bidder, Balfour Publishing, as shown on the attached tabulation.

Recommendation: That the contract be awarded to the lowest responsive bidder as indicated above.

### 3. Financial Statements

Financial statements for the month of March will be presented for the board's information.

The following vouchers, as audited and certified by the Auditing Officer as required by RCW 42.24.080, and those expense reimbursement claims certified as required by RCW 42.24.090, are approved for payment. Those payments have been recorded on this listing which has been made available to the board.

As of April 24, 2017, the board, by a \_\_\_\_\_ vote, approves payments, totaling \$1,624,123.52. The payments are further identified in this document.

Total by Payment Type for Cash Account, US Bank of Washington:  
Warrant Numbers 437050 through 437269, totaling \$1,624,123.52

Secretary _____	Board Member _____
Board Member _____	Board Member _____
Board Member _____	Board Member _____

Check Nbr	Vendor Name	Check Date	Check Amount
437050	911 ETC INC	04/24/2017	308.60
437051	ABC SUN CONTROL INC.	04/24/2017	6,832.81
437052	AGRISHOP INC	04/24/2017	99.10
437053	ALL HANDS COMMUNITY INTERPRETI	04/24/2017	585.68
437054	ALPINE PRODUCTS INC	04/24/2017	183.80
437055	AMERICAN ACADEMY ~ GRADUATION	04/24/2017	21,419.94
437056	AMERICAN RED CROSS	04/24/2017	324.00
437057	ANIXTER INC	04/24/2017	320.42
437058	APPERSON INC	04/24/2017	186.59
437059	ARAMARK UNIFORM SERVICES	04/24/2017	157.63
437060	AUBURN HIGH SCHOOL	04/24/2017	2,200.00
437061	AUBURN AREA CHAMBER OF COMMERC	04/24/2017	200.00
437062	BARGREEN ELLINGSON INC	04/24/2017	14,382.06
437063	BATES TECHNICAL COLLEGE	04/24/2017	683.70
437064	BELLEVUE COMM COLLEGE	04/24/2017	1,357.11
437065	BRAMBILA, OLGA	04/24/2017	246.82
437066	BRIDGESTONE AMERICAS TIRE OPER	04/24/2017	1,859.02

Check Nbr	Vendor Name	Check Date	Check Amount
437067	BRYSON SALES & SERVICE	04/24/2017	174.87
437068	BUDGET OFFICE PRODUCTS LLC	04/24/2017	882.06
437069	CARPINITO BROTHERS INC	04/24/2017	183.63
437070	CASCADE BEAUTY COLLEGE	04/24/2017	3,721.10
437071	CDW GOVERNMENT INC	04/24/2017	260.40
437072	CENTURY LINK	04/24/2017	10,260.56
437073	CENTURY LINK	04/24/2017	33,376.00
437074	CHILDRENS INSTITUTE FOR LEARNI	04/24/2017	18,203.36
437075	CHILDRENS THERAPY CENTER	04/24/2017	21,280.00
437076	CITY OF PACIFIC	04/24/2017	1,689.85
437077	CLOVER PARK TECHNICAL COLLEGE	04/24/2017	2,762.43
437078	COASTAL FARM & RANCH	04/24/2017	91.25
437079	COLLEGE BOARD	04/24/2017	6,237.00
437080	CONSOLIDATED ELECTRICAL DIST I	04/24/2017	165.27
437081	CUMMINS INC	04/24/2017	536.01
437082	CUMMINS INC	04/24/2017	253.36
437083	D SQUARE ENERGY SYSTEMS INC	04/24/2017	1,851.67
437084	D SQUARE ENERGY SYSTEMS INC	04/24/2017	1,564.59
437085	DAILY JOURNAL OF COMMERCE	04/24/2017	212.00
437086	DAIRY FRESH FARMS INC	04/24/2017	40,927.85
437087	DELL MARKETING LP % DELL USA L	04/24/2017	3,540.95
437088	DON SMALL & SONS OIL DIST CO	04/24/2017	627.60
437089	DRUG FREE BUSINESS	04/24/2017	783.45
437090	DUCK DELIVERY OF WASH INC	04/24/2017	2,292.55
437091	DYNAMIC LANGUAGE CENTER INC	04/24/2017	2,364.02

Check Nbr	Vendor Name	Check Date	Check Amount
437092	EBS HEALTHCARE STAFFING SERVIC	04/24/2017	2,437.50
437093	ECOLAB INC	04/24/2017	345.22
437094	EHS INTERNATIONAL INC	04/24/2017	4,317.59
437095	EK BEVERAGE COMPANY	04/24/2017	902.60
437096	EVELYN N PROBERT LITERACY CONS	04/24/2017	787.50
437097	EXPANDING YOUR HORIZONS HIGH S	04/24/2017	1,760.00
437098	Vendor Continued Check	04/24/2017	0.00
437099	Vendor Continued Check	04/24/2017	0.00
437100	Vendor Continued Check	04/24/2017	0.00
437101	FERGUSON ENTERPRISES INC #3007	04/24/2017	4,473.33
437102	FLEETPRIDE	04/24/2017	176.77
437103	GOODY MAN DISTRIBUTING INC	04/24/2017	5,602.55
437104	GOS PRINTING CORP	04/24/2017	474.73
437105	Vendor Continued Check	04/24/2017	0.00
437106	Vendor Continued Check	04/24/2017	0.00
437107	Vendor Continued Check	04/24/2017	0.00
437108	GOSNEY MOTOR PARTS INC	04/24/2017	1,461.64
437109	Vendor Continued Check	04/24/2017	0.00
437110	GRAINGER DEPT 810392688	04/24/2017	147.05
437111	GREEN RIVER COMMUNITY COLLEGE	04/24/2017	655,014.63
437112	GUARDIAN SECURITY SYSTEMS INC	04/24/2017	1,464.00
437113	HAMMOND ASHLEY VIOLINS	04/24/2017	4,287.83
437114	HD FOWLER COMPANY INC	04/24/2017	514.20
437115	HEALTH CARE AUTHORITY DIVISION	04/24/2017	21,630.13
437116	HIGHLINE COMMUNITY COLLEGE	04/24/2017	84,388.78

Check Nbr	Vendor Name	Check Date	Check Amount
437117	HOUGHTON MIFFLIN HARCOURT	04/24/2017	6,362.42
437118	IMAGE MASTERS INC	04/24/2017	175.75
437119	INTERMOUNTAIN LOCK & SECURITY	04/24/2017	461.05
437120	JCD REPAIR LLC	04/24/2017	954.80
437121	JOSTENS	04/24/2017	2,479.04
437122	JOSTENS INC	04/24/2017	1,505.36
437123	JW PEPPER & SON INC	04/24/2017	103.89
437124	KARCHER NORTH AMERICA	04/24/2017	2,001.44
437125	KDL HARDWARE SUPPLY INC	04/24/2017	229.87
437126	KING COUNTY DEPT OF FINANCE	04/24/2017	171.00
437127	Vendor Continued Check	04/24/2017	0.00
437128	KING COUNTY DIRECTORS ASSN	04/24/2017	4,240.59
437129	LAKE RETREAT CAMP & CONF CTR	04/24/2017	110,455.00
437130	LEARNING FOR LIVING INC	04/24/2017	3,000.00
437131	LONG BUILDING TECHNOLOGIES	04/24/2017	1,890.52
437132	LOOMIS	04/24/2017	440.00
437133	M V P INC	04/24/2017	1,733.75
437134	MAXIM STAFFING SOLUTIONS	04/24/2017	10,662.50
437135	MESSIAH LUTHERAN CHURCH	04/24/2017	550.00
437136	MICONTROLS INC	04/24/2017	260.58
437137	MICRO COMPUTER SYSTEMS INC	04/24/2017	421.37
437138	MID AMERICA SPORTS ADVANTAGE	04/24/2017	346.27
437139	Vendor Continued Check	04/24/2017	0.00
437140	MUSIC & ARTS CENTER	04/24/2017	4,991.84
437141	MUSIC IN MOTION	04/24/2017	449.60



Check Nbr	Vendor Name	Check Date	Check Amount
437142	NEW WILDERNESS PROJECT	04/24/2017	2,160.00
437143	NEXUS YOUTH AND FAMILIES	04/24/2017	9,145.00
437144	NORBY COMPANY	04/24/2017	365.86
437145	NW FAMILY CHURCH	04/24/2017	770.00
437146	OFFICE DEPOT INC ACCT#8011 073	04/24/2017	283.46
437147	PACIFIC INTERPRETERS INC	04/24/2017	1,573.64
437148	PETRO CARD	04/24/2017	46,827.76
437149	PIERCE COLLEGE	04/24/2017	1,758.08
437150	PLANK ROAD PUBLISHING INC	04/24/2017	682.58
437151	PR MEDIA	04/24/2017	275.00
437152	PROCARE THERAPY INC	04/24/2017	3,715.66
437153	PROGRESSUS THERAPY INC	04/24/2017	7,765.81
437154	PUGET SOUND ENERGY ELECTRIC	04/24/2017	143,620.50
437155	Vendor Continued Check	04/24/2017	0.00
437156	PUGET SOUND ENERGY NAT GAS	04/24/2017	26,803.98
437157	REALLY GREAT READING COMPANY L	04/24/2017	839.33
437158	RESCUE ROOTER	04/24/2017	401.79
437159	RESCUE ROOTER	04/24/2017	403.63
437160	RESCUE ROOTER	04/24/2017	797.03
437161	Vendor Continued Check	04/24/2017	0.00
437162	REXEL INC	04/24/2017	1,987.21
437163	RODDA PAINT CO	04/24/2017	1,262.86
437164	RWC INTERNATIONAL LTD INC	04/24/2017	140.50
437165	SCHETKY NW SALES INC	04/24/2017	550.65
437166	SCHOLASTIC BOOK FAIRS REGION 1	04/24/2017	125.00

Check Nbr	Vendor Name	Check Date	Check Amount
437167	SCHOLASTIC CLASSROOM MAGAZINES	04/24/2017	1,891.05
437168	SCOTT AND FROM CO INC	04/24/2017	1,073.10
437169	SHARP BUSINESS SYSTEMS	04/24/2017	24.99
437170	SHRED IT USA LLC	04/24/2017	729.10
437171	Vendor Continued Check	04/24/2017	0.00
437172	SIX ROBBLEES INC	04/24/2017	7,014.20
437173	SKELLEY PIANO	04/24/2017	322.00
437174	SMARSH INC	04/24/2017	50.00
437175	SOLIANI HEALTH	04/24/2017	6,265.00
437176	SONITROL PACIFIC	04/24/2017	246.00
437177	SOOS CREEK WATER & SEWER DISTR	04/24/2017	2,755.60
437178	SOUND ELECTRONICS	04/24/2017	477.97
437179	SOUND PUBLISHING INC	04/24/2017	402.26
437180	SPECIAL EDUCATION INNOVATIONS	04/24/2017	1,837.50
437181	SPEEDY AUTO GLASS INC	04/24/2017	190.05
437182	STANLEY, EVAN	04/24/2017	3,252.90
437183	STANSELL GLASS INC	04/24/2017	641.75
437184	Vendor Continued Check	04/24/2017	0.00
437185	Vendor Continued Check	04/24/2017	0.00
437186	Vendor Continued Check	04/24/2017	0.00
437187	Vendor Continued Check	04/24/2017	0.00
437188	STAPLES BUSINESS ADVANTAGE	04/24/2017	7,174.51
437189	STATE AUDITOR'S OFFICE LEGIS B	04/24/2017	17,405.51
437190	STERICYCLE WASTE SERVICES	04/24/2017	20.72
437191	STEVE WEISS MUSIC INC	04/24/2017	1,102.15

Check Nbr	Vendor Name	Check Date	Check Amount
437192	SUPERIOR FIRE ELECTRIC INC	04/24/2017	2,190.00
437193	SWEETWATER SOUND INC	04/24/2017	292.92
437194	TACOMA COMMUNITY COLLEGE ED	04/24/2017	1,977.87
437195	Vendor Continued Check	04/24/2017	0.00
437196	TED BROWN MUSIC COMPANY	04/24/2017	3,953.09
437197	TIME EQUIPMENT COMPANY	04/24/2017	683.66
437198	TOP ECHELON CONTRACTING INC	04/24/2017	3,595.06
437199	TOTAL FILTRATION SERVICES INC	04/24/2017	699.46
437200	TROXELL COMMUNICATIONS INC	04/24/2017	1,253.78
437201	UNIFIRST CORPORATION	04/24/2017	773.42
437202	UNIVERSAL LANGUAGE SERVICE INC	04/24/2017	2,431.92
437203	USA MOBILITY WIRELESS INC	04/24/2017	343.46
437204	UTILITY TRAILER SALES OF WASH	04/24/2017	118.51
437205	VALLEY ATHLETICS	04/24/2017	1,311.81
437206	VERNIER SOFTWARE	04/24/2017	1,994.58
437207	VETERAN JOURNAL INC	04/24/2017	995.00
437208	WALTER E NELSON COMPANY	04/24/2017	286.78
437209	WASH CEDAR & SUPPLY CO	04/24/2017	327.47
437210	WASH FIRST ROBOTICS	04/24/2017	200.00
437211	WASH SCHOOL GIRLS LACROSSE ASS	04/24/2017	1,150.00
437212	WATER DISTRICT #111	04/24/2017	3,913.25
437213	WESTERN EXTERMINATOR CO	04/24/2017	935.00
437214	WHITE RIVER VALLEY MUSEUM	04/24/2017	350.00
437215	WILBUR ELLIS COMPANY LLC	04/24/2017	8,547.21
437216	WINNING SEASONS	04/24/2017	16,501.65

Check Nbr	Vendor Name	Check Date	Check Amount
437217	WSIPC	04/24/2017	1,012.50
437218	ADI GLOBAL DISTRIBUTION	04/24/2017	1,077.91
437219	BRUCE C ALLEN & ASSOCIATES INC	04/24/2017	9,000.00
437220	CDW GOVERNMENT INC	04/24/2017	829.83
437221	COUGHLIN PORTER LUNDEEN INC	04/24/2017	8,000.00
437222	DELIGHTFULLY NORTHWEST INC	04/24/2017	750.00
437223	DELL MARKETING LP % DELL USA L	04/24/2017	2,762.61
437224	DEPT OF REVENUE LEASEHOLD TAX	04/24/2017	2,571.35
437225	EMERSON, LEO S	04/24/2017	7,200.00
437226	FIRST AMERICAN TITLE INSURANCE	04/24/2017	548.00
437227	GRAINGER DEPT 810392688	04/24/2017	141.47
437228	HARGIS ENGINEERS INC	04/24/2017	2,799.30
437229	MICRO COMPUTER SYSTEMS INC	04/24/2017	3,332.11
437230	OAC SERVICES INC	04/24/2017	1,072.50
437231	OFFICE DEPOT INC ACCT#8011 073	04/24/2017	60.42
437232	SHOCKEY PLANNING GROUP INC	04/24/2017	9,699.12
437233	WATERSHED COMPANY	04/24/2017	4,150.00
437234	ASSN OF WASHINGTON STUDENT LEA	04/24/2017	10,083.00
437235	AUBURN FOOD BANK	04/24/2017	2,879.05
437236	AZTEC TECHNOLOGY CORP	04/24/2017	3,489.77
437237	BLACK BEAR FROZEN YOGURT	04/24/2017	224.20
437238	BSN SPORTS LLC	04/24/2017	84.21
437239	BUST A MOVE DJ	04/24/2017	1,050.00
437240	CLARKE, DAVID H	04/24/2017	150.00
437241	CLOVER PARK SCHOOL DISTRICT	04/24/2017	40.00

Check Nbr	Vendor Name	Check Date	Check Amount
437242	COSTCO BUSINESS CENTER	04/24/2017	2,571.54
437243	CURLEY, CRYSTAL ANN	04/24/2017	145.32
437244	EASTBAY INC	04/24/2017	731.46
437245	EK BEVERAGE COMPANY	04/24/2017	168.00
437246	EPD SERVICES INC	04/24/2017	710.00
437247	GOLDEN RULE SIGNS LLC	04/24/2017	26,281.10
437248	Vendor Continued Check	04/24/2017	0.00
437249	GOSNEY MOTOR PARTS INC	04/24/2017	314.51
437250	GREEN RIVER MUSIC EDUCATORS AS	04/24/2017	188.00
437251	HENRY SCHEIN INC	04/24/2017	1,052.61
437252	HORTICULTURAL SERVICES INC	04/24/2017	701.00
437253	IMAGE MASTERS INC	04/24/2017	454.43
437254	JDRF (DIABETES FOUNDATION)	04/24/2017	1,073.89
437255	K D GRAZIE INC	04/24/2017	450.25
437256	NORTH KITSAP SCHOOL DISTRICT 4	04/24/2017	146.00
437257	PACIFIC PUBLISHING COMPANY	04/24/2017	673.63
437258	PACIFIC WELDING SUPPLIES	04/24/2017	49.00
437259	SPECIALTY FROZEN DISTIBUTING	04/24/2017	320.00
437260	STAPLES BUSINESS ADVANTAGE	04/24/2017	241.48
437261	TC SPAN AMERICA	04/24/2017	871.59
437262	VICTOR, APRIL	04/24/2017	30.00
437263	VISUAL MOMENTS	04/24/2017	219.00
437264	WASH STATE FORENSICS ASSN	04/24/2017	118.00
437265	WEST COAST AWARDS & ATHLETICS	04/24/2017	80.87
437266	WESTERN WASH WRESTLING OFFICIA	04/24/2017	1,038.50

Check Nbr	Vendor Name	Check Date	Check Amount
437267	AUBURN SCHOOL DIST CHILD NUTR*	04/24/2017	2,835.60
437268	MT BAKER M S	04/24/2017	15.00
437269	RAINIER M S	04/24/2017	16.00
220	Computer	Check(s) For a Total of	1,624,123.52

0	Manual	Checks For a Total of	0.00
0	Wire Transfer	Checks For a Total of	0.00
0	ACH	Checks For a Total of	0.00
220	Computer	Checks For a Total of	1,624,123.52
Total For 220 Manual, Wire Tran, ACH & Computer Checks			1,624,123.52
Less	0	Voided	Checks For a Total of 0.00
Net Amount			1,624,123.52

## F U N D S U M M A R Y

Fund	Description	Balance Sheet	Revenue	Expense	Total
10	General Fund	24,484.51	0.00	1,486,147.38	1,510,631.89
20	Capital Projects	2,400.22	0.00	51,594.40	53,994.62
40	ASB Fund	-2,510.95	30.00	59,111.36	56,630.41
70	Private Purpose	0.00	0.00	2,866.60	2,866.60

The following vouchers, as audited and certified by the Auditing Officer as required by RCW 42.24.080, and those expense reimbursement claims certified as required by RCW 42.24.090, are approved for payment. Those payments have been recorded on this listing which has been made available to the board.

As of April 24, 2017, the board, by a \_\_\_\_\_ vote, approves payments, totaling \$61,817.95. The payments are further identified in this document.

Total by Payment Type for Cash Account, US Bank Wire Transfers:

Wire Transfer Payments 201600407 through 201600417, totaling \$61,817.95

Secretary _____	Board Member _____
Board Member _____	Board Member _____
Board Member _____	Board Member _____

Check Nbr	Vendor Name	Check Date	Check Amount
201600407	UNITED PARCEL SERVICE	04/24/2017	379.43
201600408	WASH DECA INC	04/24/2017	7,832.75
201600409	AT & T	04/24/2017	159.60
201600410	CEDAR GROVE ORGANICS RECYCLING	04/24/2017	4,891.40
201600411	CITY OF AUBURN UTILITIES	04/24/2017	38,137.51
201600412	REPUBLIC SERVICES #176	04/24/2017	3,853.18
201600414	MCCONKEY COMPANY	04/24/2017	1,172.70
201600415	TACOMA RAINIERS BASEBALL	04/24/2017	4,558.00
201600416	VERIZON WIRELESS	04/24/2017	0.94
201600417	GOSNEY MOTOR PARTS INC	04/24/2017	832.44

10	Wire Transfer Check(s) For a Total of	61,817.95
----	---------------------------------------	-----------



0	Manual	Checks For a Total of	0.00
10	Wire Transfer	Checks For a Total of	61,817.95
0	ACH	Checks For a Total of	0.00
0	Computer	Checks For a Total of	0.00
Total For 10	Manual, Wire Tran, ACH & Computer	Checks	61,817.95
Less 0	Voided	Checks For a Total of	0.00
		Net Amount	61,817.95

## F U N D S U M M A R Y

Fund	Description	Balance Sheet	Revenue	Expense	Total
10	General Fund	0.00	0.00	48,254.50	48,254.50
40	ASB Fund	0.00	0.00	13,563.45	13,563.45

The following vouchers, as audited and certified by the Auditing Officer as required by RCW 42.24.080, and those expense reimbursement claims certified as required by RCW 42.24.090, are approved for payment. Those payments have been recorded on this listing which has been made available to the board.

As of April 24, 2017, the board, by a \_\_\_\_\_ vote, approves payments, totaling \$322,122.34. The payments are further identified in this document.

Total by Payment Type for Cash Account, AP Direct Dep Settlement Accou:  
ACH Numbers 161701781 through 161701870, totaling \$322,122.34

Secretary _____	Board Member _____
Board Member _____	Board Member _____
Board Member _____	Board Member _____

Check Nbr	Vendor Name	Check Date	Check Amount
161701781	Vendor Continued Check	04/24/2017	0.00
161701782	Vendor Continued Check	04/24/2017	0.00
161701783	Vendor Continued Check	04/24/2017	0.00
161701784	Vendor Continued Check	04/24/2017	0.00
161701785	Vendor Continued Check	04/24/2017	0.00
161701786	Vendor Continued Check	04/24/2017	0.00
161701787	Vendor Continued Check	04/24/2017	0.00
161701788	AMAZON CAPITAL SERVICES INC	04/24/2017	6,679.61
161701789	AUBURN SCHOOL DIST REVOLVING F	04/24/2017	129.00
161701790	BARKER, CAROL JEAN	04/24/2017	237.74
161701791	BOCK, CHRISTINA MARIE	04/24/2017	59.44
161701792	BROWN, KELLY ANNE	04/24/2017	40.87
161701793	BUDZYNSKI, NICOLE MARIE	04/24/2017	189.52
161701794	BURKHAUSER, VALERIE KAYE	04/24/2017	29.82
161701795	BURT, TIFFANY ANN	04/24/2017	43.34
161701796	CARLOS, NANCY HAMMOND	04/24/2017	117.29
161701797	CASAD, TANA H	04/24/2017	52.43

Check Nbr	Vendor Name	Check Date	Check Amount
161701798	CAVENEY CONSULTANT SERVICES	04/24/2017	4,500.00
161701799	CUMBERLAND THERAPY SERVICES LL	04/24/2017	5,100.00
161701800	DANIELS, DENISE CLARISE	04/24/2017	187.79
161701801	ECKLUND, KARLY NICOLE	04/24/2017	46.42
161701802	FAWVER, RICHARD ALLEN	04/24/2017	45.63
161701803	FOOD SERVICES OF AMERICA *	04/24/2017	112,708.22
161701804	FRICKS, RONALD E	04/24/2017	229.00
161701805	GIBSON-MYERS, ELIZABETH ANN	04/24/2017	55.27
161701806	GLENN, MYCAH CHRISTINE	04/24/2017	500.00
161701807	GODFREY, DEAN Y	04/24/2017	395.00
161701808	GRAY, JUDY LYNN	04/24/2017	177.63
161701809	GRIMM, DEAN LAIN	04/24/2017	29.43
161701810	GUEST, MICHAELA DAWN	04/24/2017	57.25
161701811	HARTNESS, ADRIANE LOUISE	04/24/2017	8,900.00
161701812	HOGG, ELAINE M	04/24/2017	419.00
161701813	HP INC	04/24/2017	1,827.80
161701814	JOHNSON, ISAIAH DAVID	04/24/2017	48.80
161701815	KINKELA, MERILEE	04/24/2017	36.17
161701816	LAM, TAN VAN	04/24/2017	17.34
161701817	LEAF, VICKIE LYNN	04/24/2017	96.00
161701818	LEASE, KYLE GARETT	04/24/2017	38.25
161701819	LOPEZ, RICO M	04/24/2017	43.68
161701820	MCDERMOTT, THOMAS J	04/24/2017	227.99
161701821	NAGEL, MICHELLE ANN	04/24/2017	47.08
161701822	PRATT, ROBIN J	04/24/2017	495.31

Check Nbr	Vendor Name	Check Date	Check Amount
161701823	RICHARDS, CHERYL A	04/24/2017	147.13
161701824	ROGOJIN, LAURA ANN	04/24/2017	650.00
161701825	RUFFNER-MILLER, KYLEY DIANE	04/24/2017	350.00
161701826	SIGNAL, MICHAEL ANTHONY	04/24/2017	500.00
161701827	SIWIEC, ALEXANDER PAUL	04/24/2017	26.27
161701828	SMETHERAM, CAROL JEAN	04/24/2017	290.00
161701829	STEPHENSON, KATHRYN ANN	04/24/2017	114.30
161701830	STIVER, COLLEEN	04/24/2017	29.96
161701831	STRAND, DEBRA MARIE	04/24/2017	10.81
161701832	Vendor Continued Check	04/24/2017	0.00
161701833	SUNBELT STAFFING LLC	04/24/2017	31,120.50
161701834	THOMSEN, CHRISTINA WEIST	04/24/2017	427.00
161701835	UEPA, MONICA NICOLE	04/24/2017	1,000.00
161701836	Vendor Continued Check	04/24/2017	0.00
161701837	Vendor Continued Check	04/24/2017	0.00
161701838	Vendor Continued Check	04/24/2017	0.00
161701839	Vendor Continued Check	04/24/2017	0.00
161701840	US BANK CORP PROCUREMENT CARD	04/24/2017	71,370.39
161701841	US BANK CORP TRAVEL PAYMENT	04/24/2017	5,418.92
161701842	Vendor Continued Check	04/24/2017	0.00
161701843	Vendor Continued Check	04/24/2017	0.00
161701844	US BANK CTE P CARDS	04/24/2017	5,231.23
161701845	VAN HEE, GARY E	04/24/2017	190.77
161701846	VIKE, DEBRA DARLENE	04/24/2017	50.00
161701847	WILKINSON, LISA M	04/24/2017	81.87

Check Nbr	Vendor Name	Check Date	Check Amount
161701848	WITZEL, JEANNETTE CHARLOTTE	04/24/2017	68.80
161701849	AUBURN SCHOOL DIST REVOLVING F	04/24/2017	49.35
161701850	HP INC	04/24/2017	73.56
161701851	US BANK CORP PROCUREMENT CARD	04/24/2017	470.10
161701852	AMAZON CAPITAL SERVICES INC	04/24/2017	1,039.86
161701853	ANDERSON, LINDA ELLEN	04/24/2017	17.48
161701854	AUBURN SCHOOL DIST REVOLVING F	04/24/2017	225.00
161701855	BURKHALTER, ARLEEN JEAN	04/24/2017	15.17
161701856	CRATER, LAUREN BREANNE	04/24/2017	21.86
161701857	FOOD SERVICES OF AMERICA	04/24/2017	195.96
161701858	FOOD SERVICES OF AMERICA **	04/24/2017	706.20
161701859	JENSEN, KELLY ANN	04/24/2017	44.88
161701860	KING, MATTHEW L	04/24/2017	60.73
161701861	LUETTGEN, SANDRA L	04/24/2017	67.40
161701862	NEWCOMB, AKIKO NITTA	04/24/2017	900.00
161701863	PIZZA TIME	04/24/2017	586.90
161701864	PRATHER, PAUL ANDREW	04/24/2017	13.78
161701865	THOMAS, JANA DARLENE	04/24/2017	119.19
161701866	Vendor Continued Check	04/24/2017	0.00
161701867	Vendor Continued Check	04/24/2017	0.00
161701868	US BANK CORP PROCUREMENT CARD	04/24/2017	14,695.95
161701869	Vendor Continued Check	04/24/2017	0.00
161701870	US BANK CORP TRAVEL PAYMENT	04/24/2017	41,932.90
90	ACH	Check(s) For a Total of	322,122.34

0	Manual	Checks For a Total of	0.00
0	Wire Transfer	Checks For a Total of	0.00
90	ACH	Checks For a Total of	322,122.34
0	Computer	Checks For a Total of	0.00
Total For 90	Manual, Wire Tran, ACH & Computer Checks		322,122.34
Less 0	Voided	Checks For a Total of	0.00
	Net Amount		322,122.34

## F U N D S U M M A R Y

Fund	Description	Balance Sheet	Revenue	Expense	Total
10	General Fund	-1,207.78	0.00	262,093.85	260,886.07
20	Capital Projects	49.35	0.00	543.66	593.01
40	ASB Fund	-86.94	0.00	60,730.20	60,643.26

# BID-651 - HIGH SCHOOL YEARBOOKS

## AUBURN HIGH SCHOOL - 2017-2018

BASE BID & OPTIONS	BALFOUR		HERFF JONES		DORIAN	
	Per Book	Total	Per Book	Total	Per Book	Total
pg 15 BASE (600)	\$ 13.00	\$ 7,800.00	\$ 17.18	\$ 10,308.00	\$ 25.82	\$ 15,492.00
pg 22 Headbands top and bottom	\$ 1.00	\$ 600.00	\$ 1.00	\$ 600.00	0	\$ -
pg 24 8 pg autograph no art	\$ 0.80	\$ 480.00	\$ 1.00	\$ 600.00	\$ 0.40	\$ 240.00
pg 25 24 page spring supplement	\$ 3.50	\$ 2,100.00	\$ 6.60	\$ 3,960.00	\$ 3.97	\$ 2,382.00
pg 24 Name stamping	\$ 3.50	\$ 903.00	\$ 3.50	\$ 903.00	\$ 2.00	\$ 516.00
pg 29 fast payment discount				\$ (327.42)		
<b>TOTAL FOR AHS</b>		<b>\$ 11,883.00</b>		<b>\$ 16,043.58</b>		<b>\$ 18,630.00</b>

## AUBURN RIVERSIDE HIGH SCHOOL - 2017-2018

BASE BID & OPTIONS	BALFOUR		HERFF JONES		DORIAN	
	Per Book	Total	Per Book	Total	Per Book	Total
pg 15 BASE (850)	\$ 13.00	\$ 11,050.00	\$ 17.88	\$ 13,410.00	\$ 26.91	\$ 20,182.50
pg 22 Headbands top and bottom	\$ 1.00	\$ 850.00	\$ 1.00	\$ 850.00	0	\$ -
pg 24 8 pg autograph no art	\$ 0.80	\$ 680.00	\$ 1.00	\$ 850.00	\$ 0.40	\$ 340.00
pg 25 24 page spring supplement	\$ 3.50	\$ 2,975.00	\$ 6.60	\$ 5,610.00	\$ 3.97	\$ 3,374.50
pg 24 Name stamping	\$ 3.50	\$ 2,975.00	\$ 3.50	\$ 2,975.00	\$ 2.00	\$ 1,700.00
pg 29 fast payment discount				\$ (473.90)		
<b>TOTAL FOR ARHS</b>		<b>\$ 18,530.00</b>		<b>\$ 23,221.10</b>		<b>\$ 25,597.00</b>

## AUBURN MOUNTAINVIEW HIGH SCHOOL - 2017-2018

BASE BID & OPTIONS	BALFOUR		HERFF JONES		DORIAN	
	Per Book	Total	Per Book	Total	Per Book	Total
pg 15 BASE (600)	\$ 13.00	\$ 7,800.00	\$ 18.19	\$ 10,914.00	\$ 30.01	\$ 18,006.00
pg 22 Headbands top and bottom	\$ 1.00	\$ 600.00	\$ 1.00	\$ 600.00	0	\$ -
pg 24 8 pg autograph no art	\$ 0.80	\$ 480.00	\$ 1.00	\$ 600.00	\$ 0.40	\$ 240.00
pg 25 24 page spring supplement	\$ 3.50	\$ 2,100.00	\$ 6.60	\$ 3,960.00	\$ 3.97	\$ 2,382.00
pg 24 Name stamping	\$ 3.50	\$ 903.00	\$ 3.50	\$ 903.00	\$ 2.00	\$ 516.00
pg 29 fast payment discount				\$ (339.54)		
<b>TOTAL FOR AMHS</b>		<b>\$ 11,883.00</b>		<b>\$ 16,637.46</b>		<b>\$ 21,144.00</b>

<b>TOTAL ALL 3 SCHOOLS</b>	<b>\$ 42,296.00</b>	<b>\$ 55,902.14</b>	<b>\$ 65,371.00</b>
----------------------------	---------------------	---------------------	---------------------

AUBURN SCHOOL DISTRICT NO. 408

FINANCIAL STATEMENTS  
FOR  
MARCH 2017

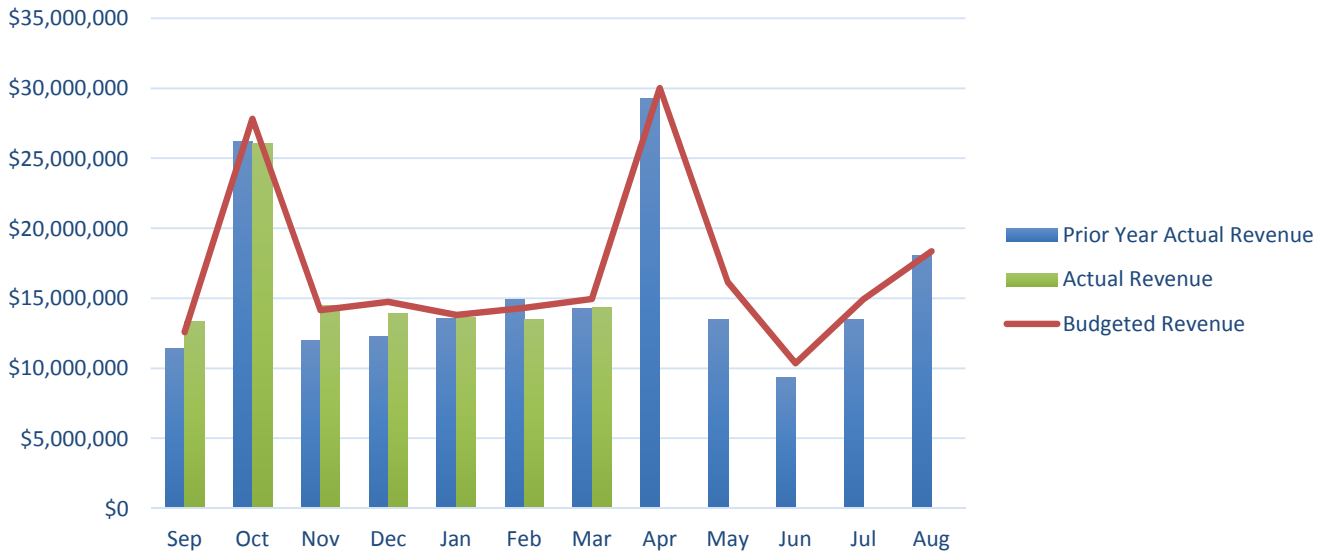


AUBURN SCHOOL DISTRICT NO. 408  
MONTHLY FINANCIAL REPORTS  
TABLE OF CONTENTS

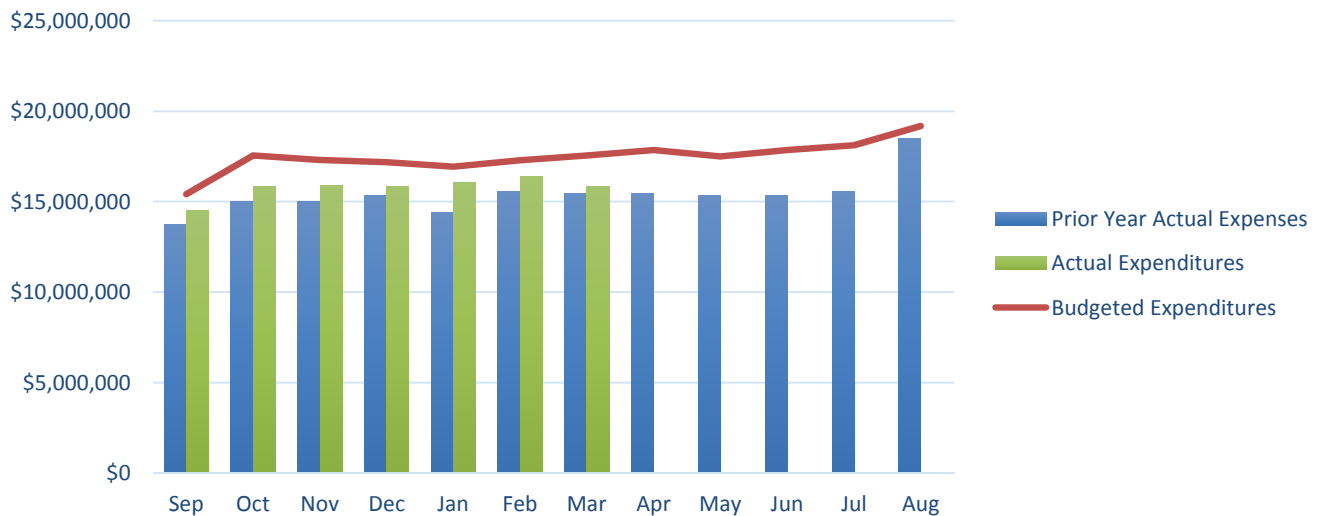
- I. Revenue and Expenditure Comparison
- II. Combined Balance Sheet
  - A. Governmental Funds
  - B. Trust Funds and Account Groups
- III. Budget Status Reports
  - A. General Fund
  - B. Transportation Vehicle Fund
  - C. Capital Projects Fund
  - D. Debt Service Fund
  - E. ASB Fund
    - 1. High Schools
    - 2. Middle Schools
- IV. Private Purpose Trust Fund Statement
- V. NBN Employee Benefits Trust Fund Statement
- VI. Local Grants

**AUBURN SCHOOL DISTRICT No. 408**  
**GENERAL FUND**  
**2016 - 2017**

**Monthly Revenue Comparison**



**Monthly Expenditure Comparison**



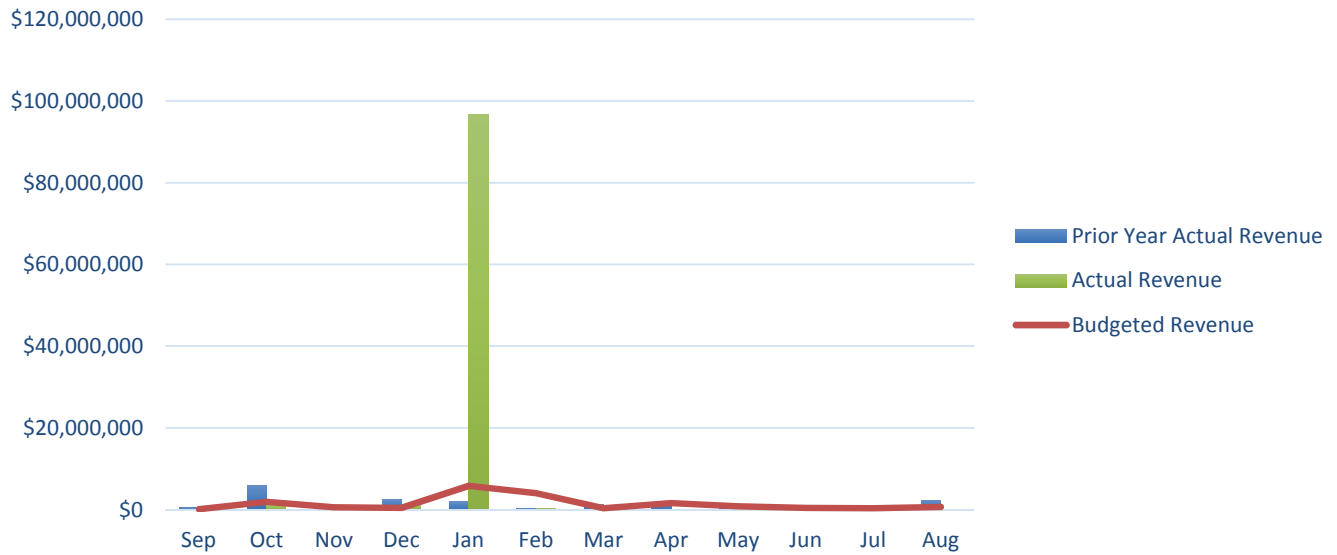
\*A six year historical average has been used to calculate the monthly Budget for both tables above.

# AUBURN SCHOOL DISTRICT No. 408

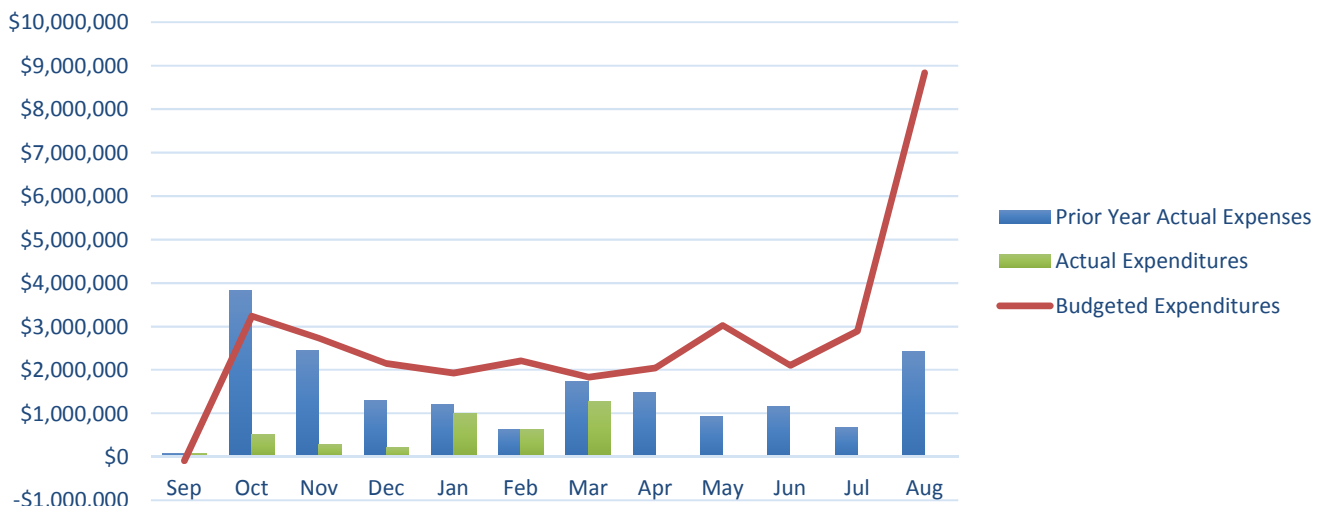
## CAPITAL PROJECTS

### 2016 - 2017

#### Monthly Revenue Comparison



#### Monthly Expenditure Comparison



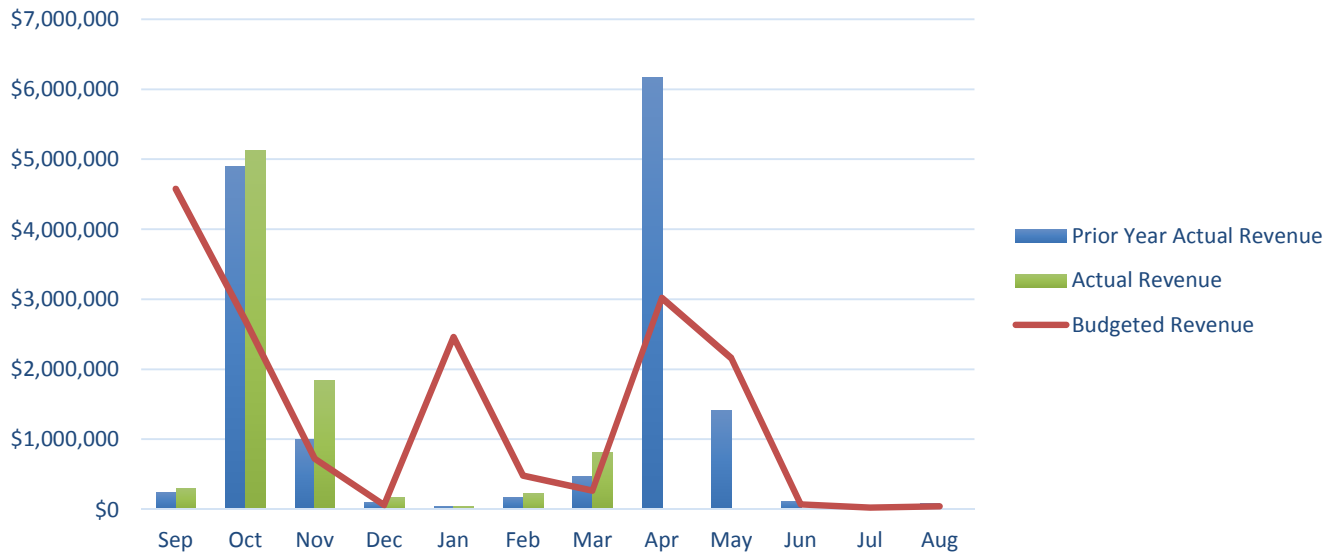
\*A six year historical average has been used to calculate the monthly Budget for both tables above.

# AUBURN SCHOOL DISTRICT No. 408

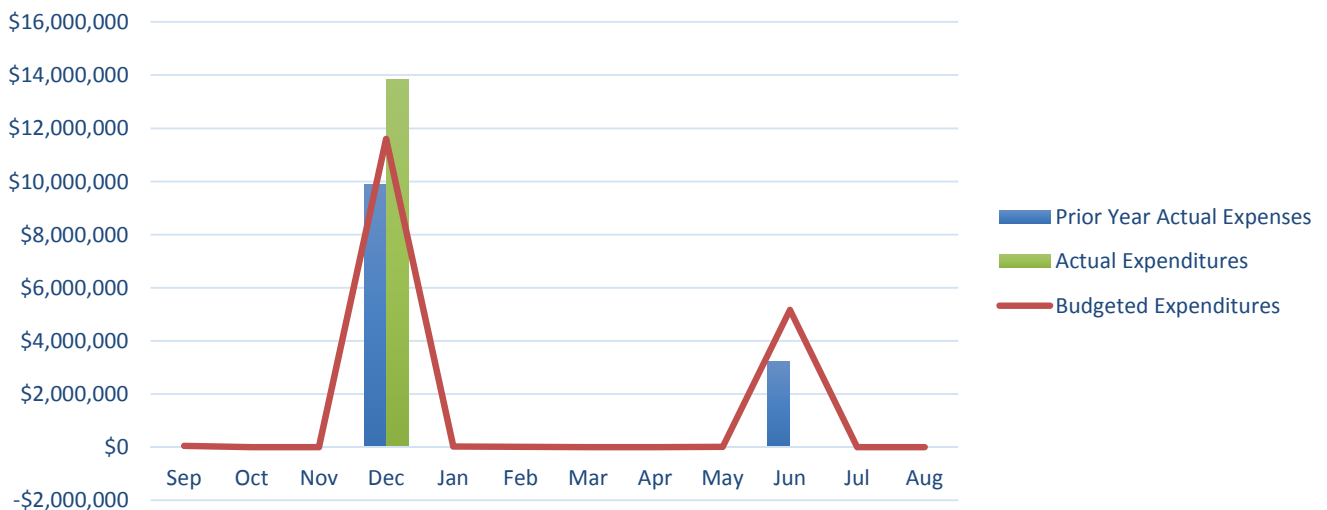
## DEBT SERVICE

### 2016 - 2017

#### Monthly Revenue Comparison



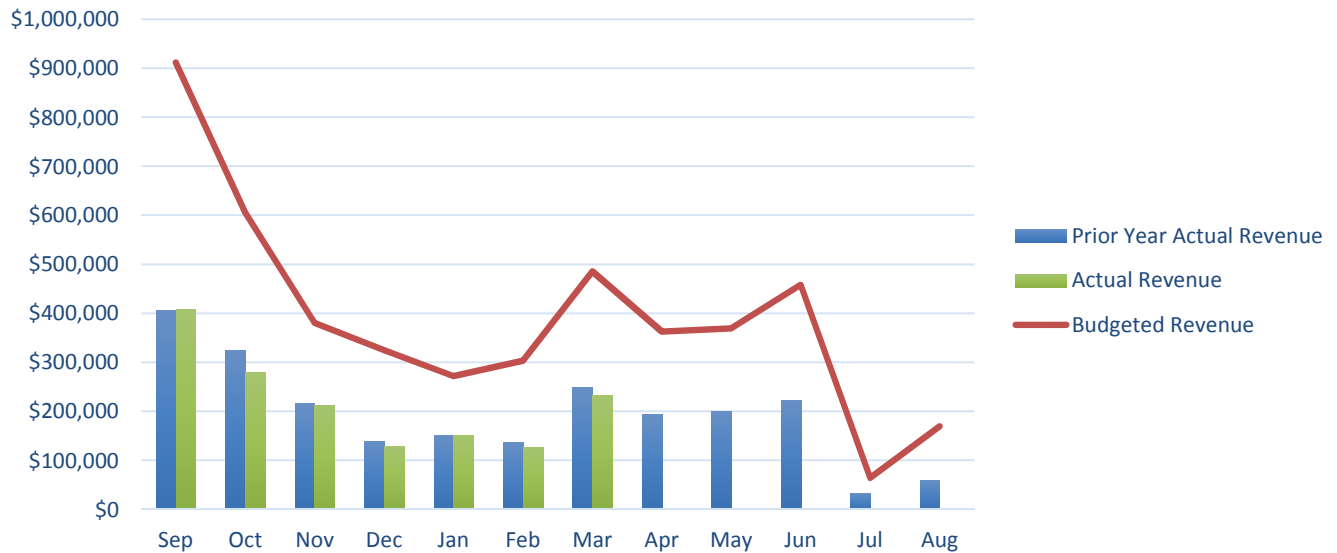
#### Monthly Expenditure Comparison



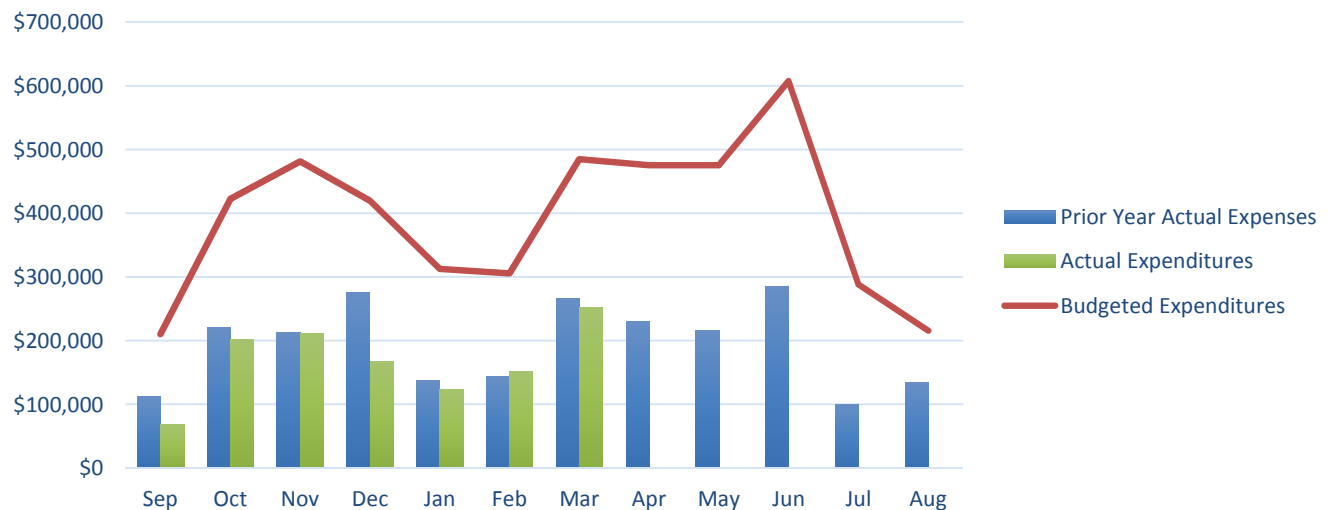
\*A six year historical average has been used to calculate the monthly Budget for both tables above.

**AUBURN SCHOOL DISTRICT No. 408**  
**ASB FUND**  
**2016 - 2017**

**Monthly Revenue Comparison**



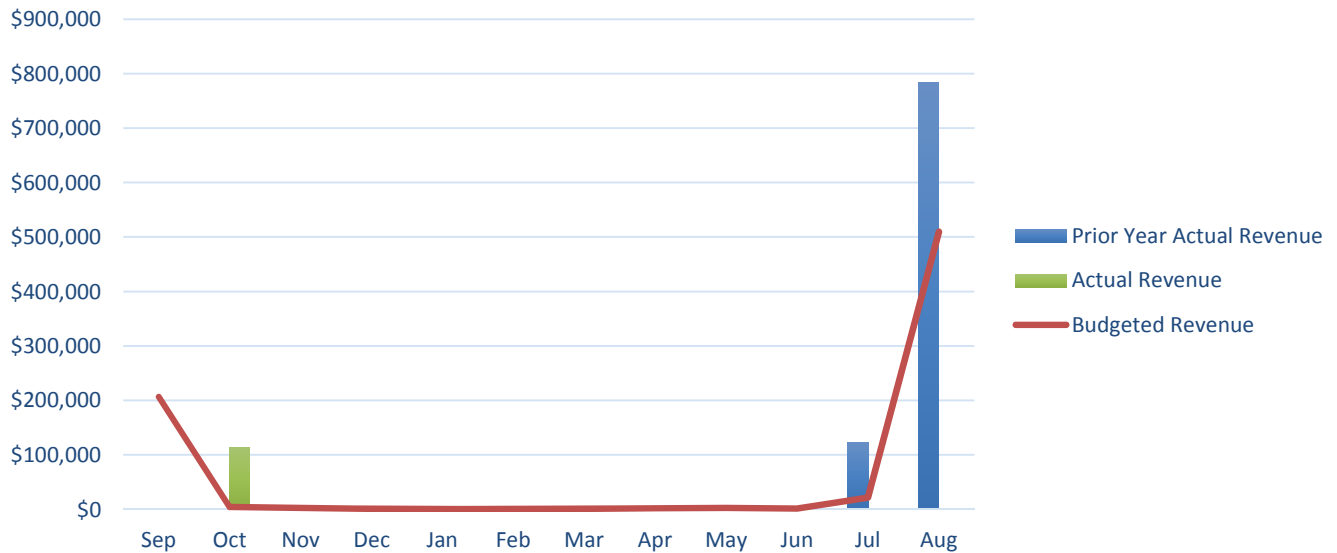
**Monthly Expenditure Comparison**



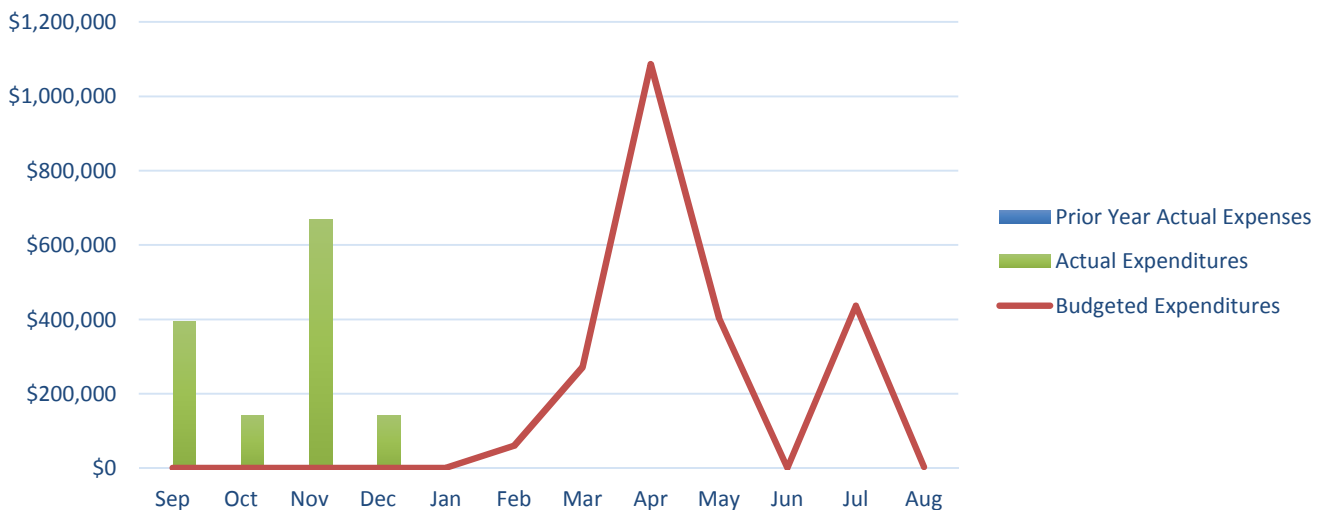
\*A six year historical average has been used to calculate the monthly Budget for both tables above.

**AUBURN SCHOOL DISTRICT No. 408**  
**TRANSPORTATION FUND**  
**2016 - 2017**

**Monthly Revenue Comparison**



**Monthly Expenditure Comparison**



\*A six year historical average has been used to calculate the monthly Budget for both tables above.

**AUBURN SCHOOL DISTRICT NO. 408**  
**BALANCE SHEETS - GOVERNMENTAL FUNDS**  
**March 31, 2017**

	GENERAL	TRANSPORT VEHICLE	CAPITAL PROJECTS	DEBT SERVICE	ASB
<b>ASSETS</b>					
Cash and cash equivalents	12,653,121	1,766,021	139,263,322	2,485,633	1,860,416
Restricted Cash	16,841	2,018	68,970	21,855	3,186
Property taxes receivable	40,179,421	-50	3,670,062	28,160,125	
Accounts receivable	205,507				0
Interest receivable	0	0	1	0	0
Due from other funds	2,548	0	0	0	0
Due from other governments	0		139,376		
Inventory of supplies	358,126				
Prepays	0				0
Total Assets	53,415,564	1,767,990	143,141,731	30,667,612	1,863,601
<b>LIABILITIES and EQUITY</b>					
<b>Liabilities:</b>					
Accounts payable	77,941	0	33,808		48,683
Estimated Unemployment Payable	-9,883				
Due to other governments	8,070	964	0	10,488	1,529
Due to other funds	2,548		4,054		0
Deferred revenue	40,267,390	-50	3,672,462	28,160,125	0
Total Liabilities	40,346,065	915	3,710,324	28,170,613	50,212
<b>Equity:</b>					
Non Spendable Fund Bal--Inven	395,350				251
Restricted for Carryovers	389,618				
Restricted for Food Services	2,533,213				
Restricted from Bond Proceeds			100,802,430		
Restricted from Levy Proceeds			5,989,519		
Restricted from State Proceeds			21,835,336		
Restricted from Impact Fees			581,174		
Restricted for Fund Purpose		2,991,760			1,813,138
Restricted to Debt Service				1,655,164	
Assigned to Contingencies	300,000				
Assigned to Other Purposes	1,800,000				
Assigned To Fund Purposes		-1,224,685	10,222,948	841,835	
Unassigned Fund Balance	7,651,317				
Total Equity	13,069,498	1,767,075	139,431,407	2,496,999	1,813,389
Total Liabilities and Equity	53,415,564	1,767,990	143,141,731	30,667,612	1,863,601

**AUBURN SCHOOL DISTRICT NO. 408**  
**BALANCE SHEETS - TRUST FUNDS AND ACCOUNT GROUPS**  
**March 31, 2017**

	TRUST FUNDS		ACCOUNT GROUPS	
	PRIV PURP TRUST	NBN EMPLOY BENEFITS	GENERAL FIXED ASSETS	GENERAL LONG-TERM DEBT
<b>ASSETS</b>				
Cash and cash equivalents	617,093	175,875		
Restricted Cash	1,499	438		
Due From Other Funds	0	0		
Accounts receivable				
Interest receivable	0	0		
Fixed assets			391,983,760	
Other debits:				
Amount available in Debt Service Fund				2,496,999
Amount to be provided for retirement of general long-term obligations				106,190,014
Total Assets	618,593	176,313	391,983,760	108,687,013
<b>LIABILITIES and EQUITY</b>				
Liabilities:				
Accounts Payable	1,138	0		
Compensated absences payable				3,737,013
Due to other governments	20	210		
Due To Other Funds	719	0		
General obligation bonds payable				104,950,000
Total Liabilities	1,877	210	0	108,687,013
Equity:				
Investment in general fixed assets			391,983,760	
Fund balances:				
Assigned To Fund Purposes	616,716	176,103		
Total Equity	616,716	176,103	391,983,760	0
Total Liabilities and Equity	618,593	176,313	391,983,760	108,687,013



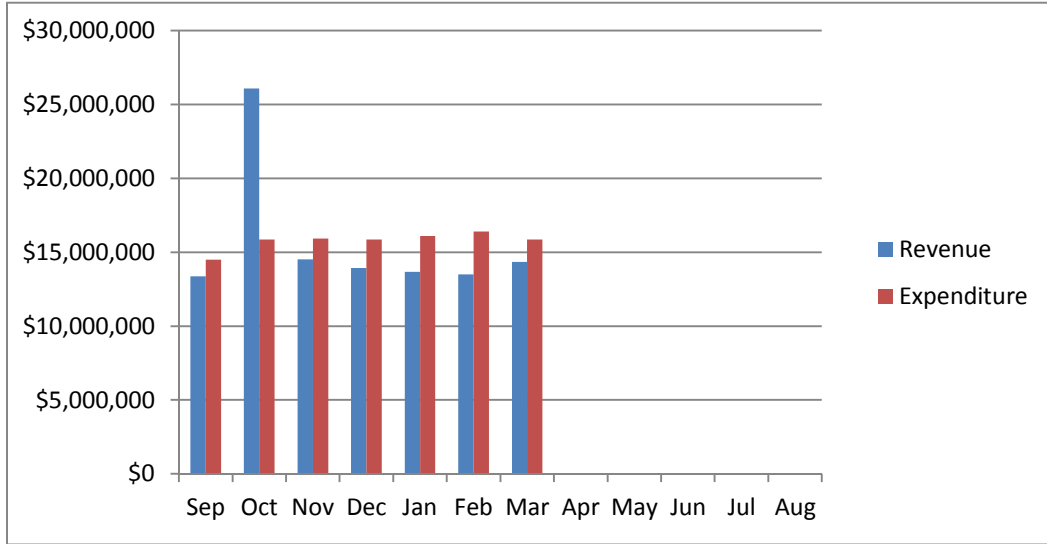
<p align="center">Auburn School District No. 408 General Fund Budget Status Summary</p>	
---	--

	REVENUE			EXPENDITURES			FUND BALANCE
Fiscal Year	Average	Actual	Actual	Average	Actual	Monthly	Beginning
2015 - 16	Cum %	Cum %	Monthly	Cum %	Cum %**	Amount	10,306,157
September	5.97%	5.97%	11,443,447	7.04%	11.20%	13,737,159	8,016,795
October	19.65%	19.65%	26,224,267	14.73%	19.06%	15,023,392	19,231,249
November	25.63%	25.63%	11,472,737	22.42%	26.38%	14,993,672	15,710,314
December	31.80%	32.11%	11,821,950	30.28%	33.87%	15,345,106	12,778,481
January	38.89%	39.40%	13,587,231	37.66%	41.10%	14,399,492	12,358,800
February	46.68%	47.19%	14,942,850	45.62%	48.82%	15,537,546	11,764,104
March	54.13%	54.64%	14,274,773	53.55%	56.79%	15,480,856	10,558,020
April	69.18%	69.69%	28,852,294	61.47%	64.34%	15,460,114	23,950,200
May	76.23%	76.99%	13,531,793	69.34%	72.07%	15,370,375	22,574,615
June	81.12%	81.88%	9,376,207	77.19%	79.81%	15,325,100	16,625,722
July	88.18%	88.93%	13,517,675	85.16%	87.68%	15,557,013	14,586,384
August	97.61%	98.36%	18,085,184	94.63%	94.63%	18,480,153	14,186,101
			Revenue			Expenditure	Fund Balance
Anticipated - First Budget			191,714,925			195,187,148	6,527,777
Actual - At Fiscal Year End			188,577,307			184,701,714	14,186,101
** Includes encumbrances.							

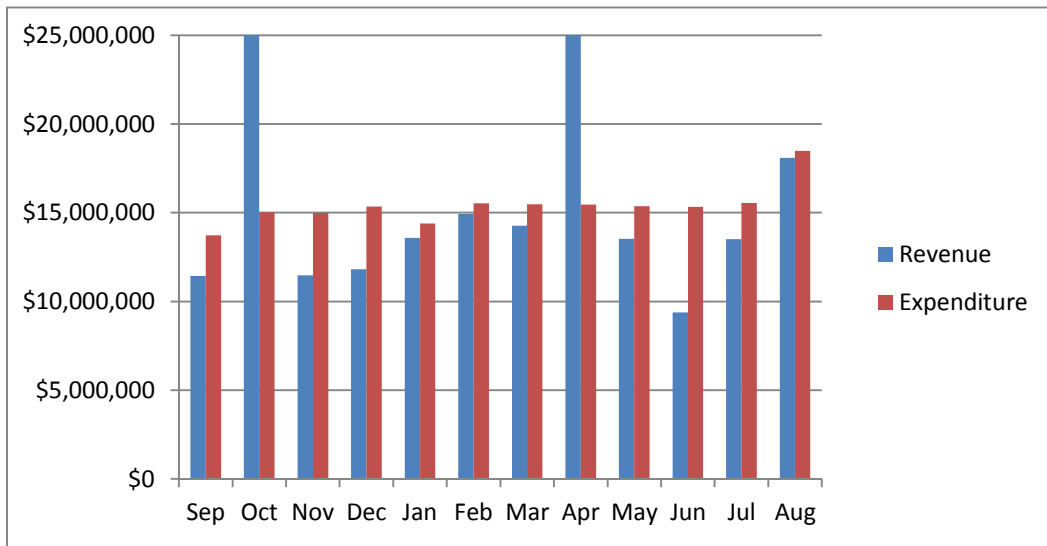
	REVENUE			EXPENDITURES			FUND BALANCE
Fiscal Year	Average	Actual	Actual	Average	Actual	Monthly	Beginning
2014 - 15	Cum %	Cum %	Monthly	Cum %	Cum %**	Amount	9,416,432
September	5.64%	5.63%	9,600,271	6.59%	11.23%	11,493,198	7,523,505
October	19.96%	19.93%	24,381,007	14.62%	18.99%	13,998,540	17,905,973
November	27.27%	26.57%	12,457,337	22.71%	26.78%	14,097,667	15,140,231
December	33.90%	33.18%	11,280,745	30.57%	34.44%	13,715,438	12,705,623
January	40.39%	39.91%	11,049,790	38.24%	42.20%	13,366,760	10,814,353
February	46.91%	46.82%	11,114,885	46.01%	49.17%	13,541,044	8,936,027
March	54.03%	54.20%	12,123,196	54.11%	54.11%	14,124,959	7,367,771
April	68.71%	69.23%	24,991,693	62.38%	64.91%	14,418,327	18,551,214
May	76.52%	77.04%	13,295,630	70.27%	72.61%	13,753,159	18,093,684
June	81.15%	81.97%	7,883,016	78.32%	80.67%	14,037,824	12,442,773
July	88.71%	89.74%	12,879,517	86.60%	88.58%	14,437,607	11,242,453
August	98.02%	99.05%	15,843,044	96.23%	96.22%	16,779,340	10,306,157
			Revenue			Expenditure	Fund Balance
Anticipated - First Budget			170,274,046			174,344,494	5,962,883
Actual - At Fiscal Year End			168,650,646			167,760,921	10,306,157
** Includes encumbrances.							

# AUBURN SCHOOL DISTRICT No. 408 GENERAL FUND

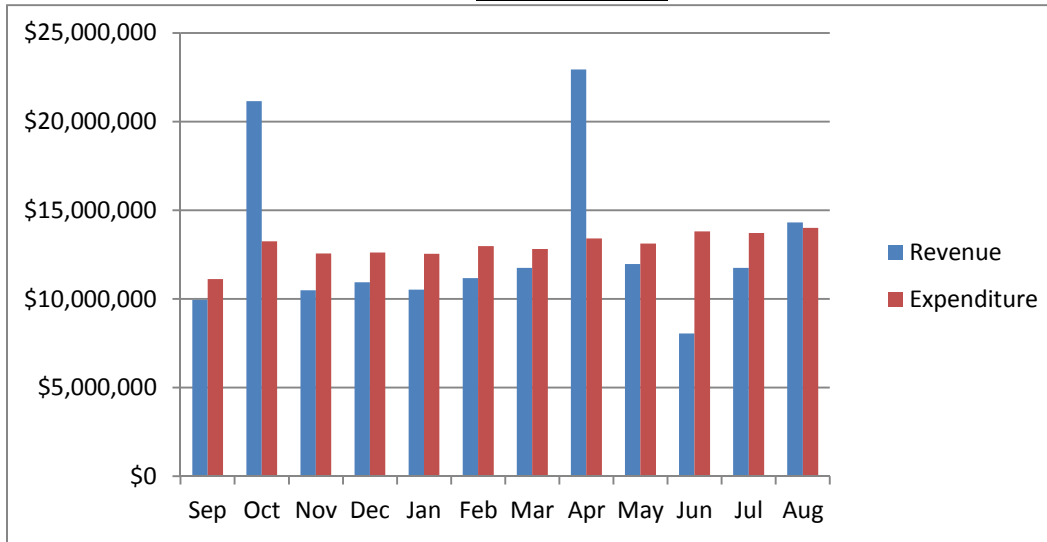
2016 - 17



2015 - 16



2014 - 15



**Auburn School District No. 408**  
**General Fund Budget Status**  
**For the Month of March, 2017**

	Annual Budget	Actual For Month	Total For Year	Encumbrance	Balance	Percent
TOTAL BEGINNING FUND BALANCE	\$ 14,000,000		14,186,101			
REVENUES AND OTHER FINANCING SOURCES						
1000 Local Taxes	39,373,979	1,170,410	19,593,760		19,780,219	49.76%
2000 Local Non-Tax	7,886,184	409,497	2,802,760		5,083,424	35.54%
3000 State, General Purpose	111,001,307	9,397,355	63,942,202		47,059,105	57.60%
4000 State, Special Purpose	26,653,428	2,420,384	15,685,883		10,967,545	58.85%
5000 Federal, General Purpose	26,383	-	-		26,383	0.00%
6000 Federal, Special Purpose	16,606,776	942,193	7,027,628		9,579,148	42.32%
7000 Revenues from Other District	525,000	5,896	292,711		232,289	55.75%
8000 Revenues from Other Agencies	102,700	-	7,490		95,210	7.29%
9000 Other Financing Sources	-	487	1,736		(1,736)	0.00%
Total Revenues & Other Finance Sources	202,175,757	14,346,222	109,354,170	-	92,821,587	54.09%
EXPENDITURES						
00 Regular Instruction	119,128,395	9,078,715	64,424,890	42,472,324	12,231,180	89.73%
10 Federal Stimulus	300,641	14,233	81,641	28,384	190,616	36.60%
20 Special Ed Instruction	25,461,055	2,062,175	14,240,824	9,236,654	1,983,576	92.21%
30 Vocational Instruction	6,840,420	545,702	3,812,093	2,598,254	430,073	93.71%
50&60 Compensatory Education	15,469,858	1,094,019	7,367,598	4,813,534	3,288,727	78.74%
70 Other Instructional Pgms	3,341,353	84,613	500,085	249,493	2,591,775	22.43%
80 Community Services	1,482,601	72,072	546,118	235,246	701,237	52.70%
90 Support Services	37,703,880	2,909,454	19,497,524	12,826,474	5,379,882	85.73%
Total Expenditures	209,728,203	15,860,982	110,470,773	72,460,363	26,797,067	87.22%
Excess Revenues/Other Financing Sources Over (under) Expend & Oth Financing Uses	(7,552,446)	(1,514,759)	(1,116,603)			
Total Ending Fund Balance	\$ 6,447,554		13,069,498			
Ending Fund Balance Accounts						
GL 821 Restricted for Carryovers			389,618			
GL 828 Restricted for Food Services	-		2,533,213			
GL 840 Nonspendable Fund Bal - Inv	-		395,350			
GL 875 Unrsrvd Dsgntd-Conting	-		300,000			
GL 888 Assigned to Other Purposes	-		1,800,000			
GL 890 UnRsrvd Undsgntd Fnd Bal	6,447,554		7,651,317			
Total Ending Fund Balance	\$ 6,447,554		\$ 13,069,498			
Fund Balance % of Expenditures	3%		12%			

**Auburn School District No. 408**  
**Capital Projects Fund Budget Status**  
**For the Month of March, 2017**

	Annual Budget	Actual For Month	Total For Year	Encumbrance	Balance	Percent
TOTAL BEGINNING FUND BALANCE	\$ 34,500,000		\$ 43,337,295			
REVENUES AND OTHER FINANCING SOURCES						
1000 Local Taxes	3,634,042	107,429	1,850,900		1,783,142	50.93%
2000 Local Non-Tax	3,025,200	287,947	2,691,608		333,592	88.97%
3000 State, General Purpose	-	-	-		-	0.00%
4000 State, Special Purpose	10,000,000	-	-		10,000,000	0.00%
5000 Federal, General Purpose	-	-	-		-	0.00%
6000 Federal, Special Purpose	-	-	-		-	0.00%
7000 Revenues from Other District	-	-	-		-	0.00%
8000 Revenues from Other Agencies	-	-	-		-	0.00%
9000 Other Financing Sources	-	-	95,555,511		(95,555,511)	0.00%
Total Revenues & Other Financing Sources	16,659,242	395,376	100,098,018	-	(83,438,776)	600.86%
EXPENDITURES						
10 Sites	24,200,000	235	3,326	-	24,196,675	0.01%
20 Buildings	3,260,488	695,530	1,998,517	1,756,114	(494,144)	115.16%
30 Equipment	5,000,000	583,690	1,391,157	73,623	3,535,220	29.30%
40 Energy	-	8,767	151,395	-	(151,395)	0.00%
50 Sales & Lease Expenditures	-	-	-	-	-	0.00%
60 Bond Issuance Expenditures	459,512	-	459,511	-	1	100.00%
90 Debt	-	-	-	-	-	0.00%
Total Expenditures	32,920,000	1,288,222	4,003,906	1,829,737	27,086,357	17.72%
Excess Revenues/Other Financing Sources Over (under) Expend. & Oth Financing Uses	(16,260,758)	(892,846)	96,094,113			
Total Ending Fund Balance	\$ 18,239,242		\$ 139,431,407			
Ending Fund Balance Accounts						
GL 861 Restricted from Bond Proceeds	7,204,852		100,802,430			
GL 862 Restricted from Levy Proceeds	(1,770,778)		5,989,519			
GL 863 Restricted from State Proceeds	8,239,242		21,835,336			
GL 865 Restricted from Other Proceeds	(24,586,150)		-			
GL 866 Restricted from Impact Fees	2,891,318		581,174			
GL 889 Assigned to Fund Purpose	10,000,000		10,222,948			
GL 890 UnRsrvd Undsgntd Fnd Bal	16,260,758					
Total Ending Fund Balance	\$ 18,239,242		\$ 139,431,407			

**Auburn School District No. 408**  
**ASB Fund Budget Status**  
**For the Month of March, 2017**

	Annual Budget	Actual For Month	Total for Year	Encumb	Balance	Percent
TOTAL BEGINNING FUND BALANCE	\$ 1,032,671		\$ 1,450,714			
REVENUES AND OTHER FINANCING SOURCES						
1000 General Student Body	1,824,512	39,309	533,326		1,291,186	29.23%
2000 Athletics	278,570	18,781	173,150		105,420	62.16%
3000 Classes	254,250	10,187	58,907		195,343	23.17%
4000 Clubs	2,214,885	131,175	726,511		1,488,374	32.80%
6000 Private Moneys	134,000	32,950	44,963		89,037	33.55%
Total Revenues & Other Financing Sources	4,706,217	232,402	1,536,857	-	3,169,360	32.66%
EXPENDITURES						
1000 General Student Body	1,435,605	53,443	311,358	80,971	1,043,276	27.33%
2000 Athletics	411,543	41,609	174,234	27,541	209,767	49.03%
3000 Classes	268,365	6,483	42,063	8,421	217,881	18.81%
4000 Clubs	2,448,134	149,987	639,901	241,268	1,566,965	35.99%
6000 Private Moneys	134,100	-	6,626	-	127,474	4.94%
Total Expenditures	4,697,747	251,522	1,174,182	358,202	3,165,363	32.62%
Excess Revenues/Other Financing Sources Over (under) Expend. & Oth Financing Uses	8,470	(19,120)	362,675			
Total Ending Fund Balance	\$ 1,041,141		\$ 1,813,389			
Ending Fund Balance Accounts						
GL 819 Restricted for Fund Purpose	1,041,141		1,813,138			
GL840 Nonspendable-Inven/Prepaid			251			
GL 889 Assigned to Fund Purposes						
Total Ending Fund Balance	\$ 1,041,141		\$ 1,813,389			

**Auburn School District No. 408**  
**Debt Service Fund Budget Status**  
**For the Month of March, 2017**

	Annual Budget	Actual For Month	Total Year	Encumbrance	Balance	Percent
TOTAL BEGINNING FUND BALANCE	\$ 7,745,000		\$ 7,844,352			
REVENUES AND OTHER FINANCING SOURCES						
1000 Local Taxes	16,545,121	812,297	8,477,440		8,067,681	51.24%
2000 Local Non-Tax	40,000	1,125	26,713		13,287	66.78%
3000 State, General Purpose		-	-		-	0.00%
5000 Federal, General Purpose		-	-		-	0.00%
6000 Federal, Special Purpose		-	-		-	0.00%
9000 Other Financing Sources		-	1,237		(1,237)	0.00%
Total Revenues & Other Financing Sources	16,585,121	813,422	8,505,390		8,079,731	51.28%
EXPENDITURES						
Matured Bond Expenditures	10,635,000	-	10,635,000	-	-	100.00%
Interest on Bonds	6,221,363	-	3,217,744	-	3,003,619	51.72%
Interfund Loan Interest	-	-	-	-	-	0.00%
Bond Transfer Fees	500	-	-	-	500	0.00%
Arbitrage Rebate	-	-	-	-	-	0.00%
Underwriter's fees	-	-	-	-	-	0.00%
Total Expenditures	16,856,863	-	13,852,744	-	3,004,119	82.18%
Other Financing Uses		-	-			
Excess Revenues/Other Financing Sources Over (under) Expend. & Oth Financing Uses	(271,742)	813,422	(5,347,353)			
Total Ending Fund Balance	\$ 7,473,258		\$ 2,496,999			
Ending Fund Balance Accounts						
GL 810 Reserved For Other Items			-			
GL 830 Reserved For Debt Service	7,745,000		1,655,164			
GL 889 Assigned to Fund Purposes	(271,742)		841,835			
GL 890 UnRsrvd Undsgntd Fnd Bal						
Total Ending Fund Balance	\$ 7,473,258		\$ 2,496,999			

**Auburn School District No. 408**  
**Transportation Vehicle Fund Budget Status**  
**For the Month of March, 2017**

	Annual Budget	Actual For Month	Total For Year	Encumb	Balance	Percent
TOTAL BEGINNING FUND BALANCE	\$ 1,109,088		\$ 2,991,760			
REVENUES AND OTHER FINANCING SOURCES						
1000 Local Taxes	-	-	-		-	0.00%
2000 Local Non-Tax	11,200	1,331	9,982		1,218	89.12%
3000 State, General Purpose	0	-	-		-	0.00%
4000 State, Special Purpose	741,597	-	-		741,597	0.00%
5000 Federal, General Purpose	-	-	-		-	0.00%
8000 Revenues from Other Agencies	-	-	-		-	0.00%
9000 Others Financing Sources	-	-	111,408		(111,408)	0.00%
Total Revenues & Other Financing Sources	752,797	1,331	121,390	-	631,407	16.13%
EXPENDITURES						
Type 30 Equipment	2,260,000	-	1,346,075	-	913,925	59.56%
Total Expenditures	2,260,000	-	1,346,075	-	913,925	59.56%
Excess Revenues/Other Financing Sources Over (under) Expend & Oth Financing Uses	(1,507,203)	1,331	(1,224,685)			
Total Ending Fund Balance	\$ (398,115)		\$ 1,767,075			
Ending Fund Balance Accounts						
GL 819 Restricted for Fund Purposes	1,109,088		2,991,760			
GL 889 Assigned to Special Fund Purposes	152,797		(1,224,685)			
GL 890 UnRsrvd Undsgntd Fnd Bal			-			
Total Ending Fund Balance	\$ 1,261,885		\$ 1,767,075			

**AUBURN SCHOOL DISTRICT No. 408**

**ASB FUND**

**MARCH, 2017**

**HIGH SCHOOLS**

	<b>Auburn High</b>	<b>Auburn Mountainview</b>	<b>Auburn Riverside</b>	<b>West Auburn</b>	<b>TOTAL</b>
	401	405	408	504	
<b>BEGINNING BALANCE</b>	<b>\$ 192,448.20</b>	<b>\$ 288,256.12</b>	<b>\$ 353,697.83</b>	<b>\$ 7,942.23</b>	<b>\$ 842,344.38</b>
<b>REVENUES</b>	<b>\$ 411,882.84</b>	<b>\$ 353,521.58</b>	<b>\$ 393,510.60</b>	<b>\$ 1,078.68</b>	<b>\$ 1,159,993.70</b>
<b>EXPENDITURES</b>					
General	\$ 40,271.15	\$ 91,119.03	\$ 41,787.83	\$ 321.74	\$ 173,499.75
Athletics	62,482.25	38,066.29	65,071.09	-	165,619.63
Classes	5,937.84	13,136.56	10,605.84	-	29,680.24
Clubs	206,387.13	159,910.83	190,880.62	-	557,178.58
Private Monies	1,318.94	3,040.12	-	-	4,359.06
<b>TOTAL EXPENDITURES</b>	<b>\$ 316,397.31</b>	<b>\$ 305,272.83</b>	<b>\$ 308,345.38</b>	<b>\$ 321.74</b>	<b>\$ 930,337.26</b>
<b>TRANSFERS</b>					
General	\$ 42,269.00	\$ 19,695.84	\$ 44,586.16	\$ -	\$ 106,551.00
Athletics	(20,735.00)	(6,494.25)	(21,043.04)	-	(48,272.29)
Classes	(712.00)	(270.00)	(9,542.04)	-	(10,524.04)
Clubs	(20,722.00)	(12,931.59)	(14,001.08)	-	(47,654.67)
Private Monies	(100.00)	-	-	-	(100.00)
<b>TOTAL TRANSFERS</b>	<b>\$ -</b>	<b>\$ -</b>	<b>\$ -</b>	<b>\$ -</b>	<b>\$ -</b>
<b>OVER/ (UNDER)</b>	<b>\$ 95,485.53</b>	<b>\$ 48,248.75</b>	<b>\$ 85,165.22</b>	<b>\$ 756.94</b>	<b>\$ 229,656.44</b>
<b>ENDING BALANCE</b>	<b>\$ 287,933.73</b>	<b>\$ 336,504.87</b>	<b>\$ 438,863.05</b>	<b>\$ 8,699.17</b>	<b>\$ 1,072,000.82</b>



**AUBURN SCHOOL DISTRICT No. 408**

**ASB FUND**

**MARCH, 2017**

**MIDDLE SCHOOLS**

	Cascade	Mt. Baker	Rainier	Olympic	TOTAL
	202	207	206	203	
<b>BEGINNING BALANCE</b>	<b>\$ 72,323.90</b>	<b>\$ 68,999.99</b>	<b>\$ 109,505.87</b>	<b>\$ 102,959.00</b>	<b>\$ 353,788.76</b>
<b>REVENUES</b>	<b>\$ 51,528.76</b>	<b>\$ 61,030.49</b>	<b>\$ 63,404.78</b>	<b>\$ 30,893.76</b>	<b>\$ 206,857.79</b>
<b>EXPENDITURES</b>					
General	\$ 15,638.00	\$ 7,994.55	\$ 19,900.85	\$ 9,063.50	\$ 52,596.90
Athletics	1,324.39	2,933.14	99.15	4,258.11	8,614.79
Classes	-	1,111.59	1,932.54	-	3,044.13
Clubs	24,583.09	30,137.17	20,418.05	7,584.12	82,722.43
Private Monies	941.65	1,325.17	-	-	2,266.82
<b>TOTAL EXPENDITURES</b>	<b>\$ 42,487.13</b>	<b>\$ 43,501.62</b>	<b>\$ 42,350.59</b>	<b>\$ 20,905.73</b>	<b>\$ 149,245.07</b>
<b>TRANSFERS</b>					
General	\$ 5,350.00	\$ 15,335.00	\$ 3,859.33	\$ 345.66	\$ 24,889.99
Athletics	(1,000.00)	(7,760.00)	(200.00)	(245.66)	(9,205.66)
Classes	-	(2,500.00)	(3,500.00)	-	(6,000.00)
Clubs	(4,350.00)	(5,075.00)	(159.33)	(100.00)	(9,684.33)
Private Monies	-	-	-	-	-
<b>TOTAL TRANSFERS</b>	<b>\$ -</b>	<b>\$ -</b>	<b>\$ (0.00)</b>	<b>\$ 0.00</b>	<b>\$ 0.00</b>
<b>OVER/ (UNDER)</b>	<b>\$ 9,041.63</b>	<b>\$ 17,528.87</b>	<b>\$ 21,054.19</b>	<b>\$ 9,988.03</b>	<b>\$ 57,612.72</b>
<b>ENDING BALANCE</b>	<b>\$ 81,365.53</b>	<b>\$ 86,528.86</b>	<b>\$ 130,560.06</b>	<b>\$ 112,947.03</b>	<b>\$ 411,401.48</b>

**AUBURN SCHOOL DISTRICT NO. 408**  
**PRIVATE PURPOSE TRUST FUND STATEMENT**  
**March 31, 2017**

**REVENUES:**

InvestED		2,785
Scholarship Donations:		
6007 Pat Kuhlman	1,000	
6023 Optimist Scholarship	21,000	
6024 Rotary	1,473	
6065 ARHS Counseling	1,145	
6067 ARHS English SC	500	
6076 Hirose Memorial	300	
6089 Watt Memorial	125	
6100 AMHS Drama	652	
6103 Linda Cowan	100	
6110 Marilyn Valent	1,000	
6126 Bob Jones Serv	15,290	
6127 Term Prk Alumni	400	
6402 American Legion	400	
6406 AAWP	800	
6412 Molen Ortho	1,500	
6415 Bill Profit	803	
6501 Invest Ed- AHS	1,000	
6502 Invest Ed - Casc	37	
6505 Invest Ed - AMHS	1,637	
6520 Invest Ed - RAI	37	
6527 Invest Ed - MTB	37	
6528 Invest Ed - ARHS	37	
7003 Pioneer Shoe Fund	2,362	
7004 ARHS Win Wishes	6,472	
7005 AHS Booster Club	6,860	
7006 Native Am Students	60	
7010 Food Bank	755	
Total Scholarship Donations		65,782
Interest		2,756
Total Revenues		<u>68,538</u>

**EXPENDITURES:**

InvestED	8,741
6038 ARHS Masonic	-500
6065 ARHS Counseling	-350
6080 Jill Wilson	-2,500
6083 Juan Huseby	-1,000
6126 Bob Jones Serv	1,113
6204 Auburn Noon Lions	-500
6415 Bill Profit	41
6501 Invest Ed- AHS	4,004
6502 Invest Ed - Casc	280
6505 Invest Ed - AMHS	2,139
6520 Invest Ed - RAI	184
6527 Invest Ed - MTB	336
6528 Invest Ed - ARHS	1,799
7003 Pioneer Shoe Fund	726
7004 ARHS Win Wishes	4,508
7005 AHS Booster Club	5,293

7006 Native Am Students	18,023
7009 Chinook Shoe Fund	253
Total Expenditures	<u>33,848.36</u>
Excess of Revenue over (under) Expenditure	34,689
Fund Balance - Beginning of the Year	<u>582,027</u>
Fund Balance - Year to Date	<u><u>\$ 616,716</u></u>

**AUBURN SCHOOL DISTRICT NO 408**  
**NBN Employee Benefits Trust Fund Statement**  
**March 31, 2017**

**ADDITIONS:**

Contributions from Plan Members	\$ 165,648.00
Investment Earnings	<u>614.23</u>
Total Additions	<u>166,262.23</u>

**DEDUCTIONS:**

Benefits Claims	145,888.37
State Program Fees	<u>350.00</u>
Total Deductions	<u>146,238.37</u>

<b>NET DEDUCTIONS</b>	20,023.86
-----------------------	-----------

Net Assets at Beginning of Year	<u>156,079.43</u>
---------------------------------	-------------------

Net Assets Year To Date	<u><u>\$ 176,103.29</u></u>
-------------------------	-----------------------------

**AUBURN SCHOOL DISTRICT NO. 408**  
**Local Grants Received in March, 2017**

Donor	Recipient	Amount
Communities in Schools	Gildo Rey	\$1,879.26
Communities in Schools	Dick Scobee	\$1,903.71
Communities in Schools	Terminal Park	\$1,544.76
Communities in Schools	Cascade	\$2,371.58
Communities in Schools	Olympic	\$2,446.56
Communities in Schools	Mt. Baker	\$1,529.99
Dorian Studios	Alpac	\$871.51
Tobel-Earl	Evergreen	\$10.00
Dorian Studios	Chinook	\$706.36
Muckleshoot Tribe	Chinook	\$1,500.00
Chatman Donation	Lea Hill	\$2,500.00
Auburn Public Schools Foundation	Lea Hill	\$250.00
Red Robin	Lea Hill	\$31.82
Dorian Studios	Lea Hill	\$620.70
Kenwood Rebate	Pioneer	\$180.00
Dorian Studios	Terminal Park	\$263.15
Red Robin	Hazelwood	\$27.75
PTA Donations	Hazelwood	\$111.19
Dorian Studios	Alpac	\$761.10
Dorian Studios	Arthur Jacobsen	\$752.07
Student Paths	AHS	\$1,480.50
Auburn Public Schools Foundation	ASD	\$50.00
Total		<u><u>\$21,792.01</u></u>

10--General Fund-- FUND BALANCE -- AGENCY ACCOUNTS -- Revised -- BUDGET-STATUS-REPORT  
Fiscal Year 2016 (September 1, 2016 - August 31, 2017)

For the AUBURN SCHOOL DISTRICT NO. 408 School District for the Month of March, 2017

	ANNUAL BUDGET	ACTUAL FOR MONTH	ACTUAL FOR YEAR	ENCUMBRANCES	BALANCE	PERCENT
A. REVENUES/OTHER FIN. SOURCES						
1000 LOCAL TAXES	39,373,979	1,170,409.57	19,593,760.07		19,780,218.93	49.76
2000 LOCAL SUPPORT NONTAX	7,886,184	409,497.11	2,802,760.29		5,083,423.71	35.54
3000 STATE, GENERAL PURPOSE	111,001,307	9,397,355.00	63,942,201.96		47,059,105.04	57.60
4000 STATE, SPECIAL PURPOSE	26,653,428	2,420,384.16	15,685,883.02		10,967,544.98	58.85
5000 FEDERAL, GENERAL PURPOSE	26,383	.00	.00		26,383.00	0.00
6000 FEDERAL, SPECIAL PURPOSE	16,606,776	942,193.21	7,027,628.04		9,579,147.96	42.32
7000 REVENUES FR OTH SCH DIST	525,000	5,896.45	292,710.82		232,289.18	55.75
8000 OTHER AGENCIES AND ASSOCIATES	102,700	.00	7,490.43		95,209.57	7.29
9000 OTHER FINANCING SOURCES	0	.00	1,735.83		1,735.83-	0.00
 Total REVENUES/OTHER FIN. SOURCES	 202,175,757	 14,345,735.50	 109,354,170.46		 92,821,586.54	 54.09
 B. EXPENDITURES						
00 Regular Instruction	119,128,395	9,078,714.94	64,424,890.38	42,472,324.18	12,231,180.44	89.73
10 Federal Stimulus	300,641	14,232.82	81,640.82	28,384.26	190,615.92	36.60
20 Special Ed Instruction	25,461,055	2,062,175.07	14,240,824.42	9,236,654.22	1,983,576.36	92.21
30 Voc. Ed Instruction	6,840,420	545,701.66	3,812,092.94	2,598,253.91	430,073.15	93.71
40 Skills Center Instruction	0	.00	.00	0.00	.00	0.00
50+60 Compensatory Ed Instruct.	15,469,858	1,094,018.88	7,367,597.87	4,813,533.51	3,288,726.62	78.74
70 Other Instructional Pgms	3,341,353	84,612.60	500,085.12	249,492.54	2,591,775.34	22.43
80 Community Services	1,482,601	72,071.55	546,117.76	235,246.39	701,236.85	52.70
90 Support Services	37,703,880	2,909,454.01	19,497,523.99	12,826,473.71	5,379,882.30	85.73
 Total EXPENDITURES	 209,728,203	 15,860,981.53	 110,470,773.30	 72,460,362.72	 26,797,066.98	 87.22
 C. OTHER FIN. USES TRANS. OUT (GL 536)	 0	 .00	 .00			
 D. OTHER FINANCING USES (GL 535)	 0	 .00	 .00			
 E. EXCESS OF REVENUES/OTHER FIN.SOURCES						
OVER(UNDER)EXP/OTH FIN USES(A-B-C-D)	7,552,446-	1,515,246.03-	1,116,602.84-		6,435,843.16	85.22-
 F. TOTAL BEGINNING FUND BALANCE	 14,000,000		 14,186,101.05			
 G. G/L 898 PRIOR YEAR ADJUSTMENTS(+OR-)	 XXXXXXXXXX		 .00			
 H. TOTAL ENDING FUND BALANCE	 6,447,554		 13,069,498.21			
(E+F + OR ~ G)						

I. ENDING FUND BALANCE ACCOUNTS:

G/L 810 RESTRICTED FOR OTHER ITEMS	0	.00
G/L 815 RESTIC UNEQUALIZED DEDUCT REV	0	.00
G/L 821 RESTRICTED FOR CARRYOVER	0	389,617.53
G/L 825 RESTRICTED FOR SKILLS CENTER	0	.00
G/L 828 RESTRICTED FOR C/O OF FS REV	0	2,533,213.37
G/L 830 RESTRICTED FOR DEBT SERVICE	0	.00
G/L 835 RESTRICTD FOR ARBITAGE REBATE	0	.00
G/L 840 NONSPND FB - INVENT/PREPD ITMS	0	395,350.20
G/L 845 RESTRICTED FOR SELF-INSURANCE	0	.00
G/L 850 RESTRICTED FOR UNINSURED RISKS	0	.00
G/L 870 COMMITTED TO OTHER PURPOSES	0	.00
G/L 872 COMMITTED TO MIN FND BAL POLICY	0	.00
G/L 875 ASSIGNED CONTINGENCIES	0	300,000.00
G/L 884 ASSIGNED TO OTHER CAP PROJECTS	0	.00
G/L 888 ASSIGNED TO OTHER PURPOSES	0	1,800,000.00
G/L 890 UNASSIGNED FUND BALANCE	6,447,554	7,651,317.11
G/L 891 UNASSIGNED MIN FND BAL POLICY	0	.00
 <u>TOTAL</u>	 6,447,554	 13,069,498.21

20--Capital Projects-- FUND BALANCE -- AGENCY ACCOUNTS -- Revised -- BUDGET-STATUS-REPORT  
Fiscal Year 2016 (September 1, 2016 - August 31, 2017)For the AUBURN SCHOOL DISTRICT NO. 408 School District for the Month of March, 2017

	ANNUAL BUDGET	ACTUAL FOR MONTH	ACTUAL FOR YEAR	ENCUMBRANCES	BALANCE	PERCENT
A. REVENUES/OTHER FIN. SOURCES						
1000 Local Taxes	3,634,042	107,428.93	1,850,899.80		1,783,142.20	50.93
2000 Local Support Nontax	3,025,200	287,946.59	2,691,607.75		333,592.25	88.97
3000 State, General Purpose	0	.00	.00		.00	0.00
4000 State, Special Purpose	10,000,000	.00	.00		10,000,000.00	0.00
5000 Federal, General Purpose	0	.00	.00		.00	0.00
6000 Federal, Special Purpose	0	.00	.00		.00	0.00
7000 Revenues Fr Oth Sch Dist	0	.00	.00		.00	0.00
8000 Other Agencies and Associates	0	.00	.00		.00	0.00
9000 Other Financing Sources	0	.00	95,555,510.77		95,555,510.77-	0.00
<u>Total REVENUES/OTHER FIN. SOURCES</u>	16,659,242	395,375.52	100,098,018.32		83,438,776.32-	600.86
 B. EXPENDITURES						
10 Sites	23,225,000	235.00	3,325.50	0.00	23,221,674.50	0.01
20 Buildings	4,235,488	695,529.88	1,998,517.42	1,756,114.26	480,856.32	88.65
30 Equipment	5,000,000	583,689.53	1,391,157.31	73,622.61	3,535,220.08	29.30
40 Energy	0	8,767.29	151,394.77	0.00	151,394.77-	0.00
50 Sales & Lease Expenditure	0	.00	.00	0.00	.00	0.00
60 Bond Issuance Expenditure	459,512	.00	459,510.77	0.00	1.23	100.00
90 Debt	0	.00	.00	0.00	.00	0.00
 <u>Total EXPENDITURES</u>	32,920,000	1,288,221.70	4,003,905.77	1,829,736.87	27,086,357.36	17.72
 C. <u>OTHER FIN. USES TRANS. OUT (GL 536)</u>	0	.00	.00			
 D. <u>OTHER FINANCING USES (GL 535)</u>	0	.00	.00			
 E. <u>EXCESS OF REVENUES/OTHER FIN.SOURCES</u> <u>OVER(UNDER)EXP/OTH FIN USES (A-B-C-D)</u>	16,260,758-	892,846.18-	96,094,112.55		112,354,870.55	690.96-
 F. <u>TOTAL BEGINNING FUND BALANCE</u>	34,500,000		43,337,294.60			
 G. <u>G/L 898 PRIOR YEAR ADJUSTMENTS (+OR-)</u>	XXXXXXXXX		.00			
 H. <u>TOTAL ENDING FUND BALANCE</u> <u>(E+F + OR - G)</u>	18,239,242		139,431,407.15			



I. ENDING FUND BALANCE ACCOUNTS:

G/L 810 RESTRICTED FOR OTHER ITEMS	0	.00
G/L 825 RESTRICTED FOR SKILLS CENTER	0	.00
G/L 830 RESTRICTED FOR DEBT SERVICE	0	.00
G/L 835 RESTRICTED FOR ARBITRAGE REBAT	0	.00
G/L 840 NONSPND FB ~ INVENT/PREPD ITMS	0	.00
G/L 850 RESTRICTED FOR UNINSURED RISKS	0	.00
G/L 861 RESTRICTED FROM BOND PROCEEDS	8,989,882	100,802,430.08
G/L 862 COMMITTED FROM LEVY PROCEEDS	4,180,808-	5,989,519.12
G/L 863 RESTRICTED FROM STATE PROCEEDS	8,239,242	21,835,336.48
G/L 864 RESTRICTED FROM FEDERAL PROCEED	0	.00
G/L 865 RESTRICTED FROM OTHER PROCEEDS	23,611,150-	.00
G/L 866 RESTRICTED FROM IMPACT FEE PROC	2,541,318	581,173.58
G/L 867 RESTRICTED FROM MITIGATION FEES	0	.00
G/L 869 RESTRICTED FROM UNDISTRI PROCE	0	.00
G/L 870 COMMITTED TO OTHER PURPOSES	0	.00
G/L 889 ASSIGNED TO FUND PURPOSES	10,000,000	10,222,947.89
G/L 890 UNASSIGNED FUND BALANCE	16,260,758	.00
 TOTAL	 18,239,242	 139,431,407.15

## 30--Debt Service Fund-- FUND BALANCE -- AGENCY ACCOUNTS -- Revised --- BUDGET-STATUS-REPORT

Fiscal Year 2016 (September 1, 2016 - August 31, 2017)

For the AUBURN SCHOOL DISTRICT NO. 408 School District for the Month of March, 2017

	ANNUAL	ACTUAL	ACTUAL			
A. REVENUES/OTHER FIN. SOURCES	BUDGET	FOR MONTH	FOR YEAR	ENCUMBRANCES	BALANCE	PERCENT
1000 Local Taxes	16,545,121	812,296.64	8,477,439.77		8,067,681.23	51.24
2000 Local Support Nontax	40,000	1,125.30	26,713.49		13,286.51	66.78
3000 State, General Purpose	0	.00	.00		.00	0.00
5000 Federal, General Purpose	0	.00	.00		.00	0.00
9000 Other Financing Sources	0	.00	1,237.13		1,237.13-	0.00
<u>Total REVENUES/OTHER FIN. SOURCES</u>	16,585,121	813,421.94	8,505,390.39		8,079,730.61	51.28
<u>B. EXPENDITURES</u>						
Matured Bond Expenditures	10,635,000	.00	10,635,000.00	0.00	.00	100.00
Interest On Bonds	6,221,363	.00	3,217,743.75	0.00	3,003,619.25	51.72
Interfund Loan Interest	0	.00	.00	0.00	.00	0.00
Bond Transfer Fees	500	.00	.00	0.00	500.00	0.00
Arbitrage Rebate	0	.00	.00	0.00	.00	0.00
Underwriter's Fees	0	.00	.00	0.00	.00	0.00
<u>Total EXPENDITURES</u>	16,856,863	.00	13,852,743.75	0.00	3,004,119.25	82.18
<u>C. OTHER FIN. USES TRANS. OUT (GL 536)</u>	0	.00	.00			
<u>D. OTHER FINANCING USES (GL 535)</u>	0	.00	.00			
<u>E. EXCESS OF REVENUES/OTHER FIN. SOURCES</u>						
<u>OVER (UNDER) EXPENDITURES (A-B-C-D)</u>	271,742-	813,421.94	5,347,353.36-		5,075,611.36-	> 1000
<u>F. TOTAL BEGINNING FUND BALANCE</u>	7,745,000		7,844,352.16			
<u>G. G/L 898 PRIOR YEAR ADJUSTMENTS (+OR-)</u>	XXXXXXXXXX		.00			
<u>H. TOTAL ENDING FUND BALANCE</u>	7,473,258		2,496,998.80			
<u>(E+F + OR - G)</u>						

I. ENDING FUND BALANCE ACCOUNTS:

G/L 810 RESTRICTED FOR OTHER ITEMS	0	.00
G/L 830 RESTRICTED FOR DEBT SERVICE	7,745,000	1,655,163.87
G/L 835 RESTRICTD FOR ARBITRAGE REBATE	0	.00
G/L 870 COMMITTED TO OTHER PURPOSES	0	.00
G/L 889 ASSIGNED TO FUND PURPOSES	271,742-	841,834.93
G/L 890 UNASSIGNED FUND BALANCE	0	.00
 <u>TOTAL</u>	 7,473,258	 2,496,998.80

## 40--ASB Fund-- FUND BALANCE -- AGENCY ACCOUNTS -- Revised -- BUDGET-STATUS-REPORT

Fiscal Year 2016 (September 1, 2016 - August 31, 2017)

For the AUBURN SCHOOL DISTRICT NO. 408 School District for the Month of March, 2017

	ANNUAL BUDGET	ACTUAL FOR MONTH	ACTUAL FOR YEAR	ENCUMBRANCES	BALANCE	PERCENT
<u>A. REVENUES</u>						
1000 General Student Body	1,824,512	39,309.28	533,325.58		1,291,186.42	29.23
2000 Athletics	278,570	18,780.57	173,150.31		105,419.69	62.16
3000 Classes	254,250	10,186.67	58,907.12		195,342.88	23.17
4000 Clubs	2,214,885	131,174.91	726,511.21		1,488,373.79	32.80
6000 Private Moneys	134,000	32,950.23	44,962.52		89,037.48	33.55
 <u>Total REVENUES</u>	 4,706,217	 232,401.66	 1,536,856.74		 3,169,360.26	 32.66
 <u>B. EXPENDITURES</u>						
1000 General Student Body	1,435,605	53,442.80	311,358.19	80,971.15	1,043,275.66	27.33
2000 Athletics	411,543	41,608.93	174,234.42	27,541.25	209,767.33	49.03
3000 Classes	268,365	6,482.87	42,062.61	8,420.94	217,881.45	18.81
4000 Clubs	2,448,134	149,987.20	639,901.01	241,268.16	1,566,964.83	35.99
6000 Private Moneys	134,100	.00	6,625.88	0.00	127,474.12	4.94
 <u>Total EXPENDITURES</u>	 4,697,747	 251,521.80	 1,174,182.11	 358,201.50	 3,165,363.39	 32.62
 <u>C. EXCESS OF REVENUES</u>						
<u>OVER (UNDER) EXPENDITURES (A-B)</u>	8,470	19,120.14-	362,674.63		354,204.63	> 1000
 <u>D. TOTAL BEGINNING FUND BALANCE</u>	1,032,671		1,450,714.46			
 <u>E. G/L 898 PRIOR YEAR ADJUSTMENTS (+OR-)</u>	XXXXXXXXXX		.00			
 <u>F. TOTAL ENDING FUND BALANCE</u>	1,041,141		1,813,389.09			
<u>C+D + OR - E)</u>						

G. ENDING FUND BALANCE ACCOUNTS:

G/L 810 RESTRICTED FOR OTHER ITEMS	0	.00
G/L 819 RESTRICTED FOR FUND PURPOSES	1,041,141	1,813,137.80
G/L 840 NONSPND FB - INVENT/PREP ITMS	0	251.29
G/L 850 RESTRICTED FOR UNINSURED RISKS	0	.00
G/L 870 COMMITTED TO OTHER PURPOSES	0	.00
G/L 889 ASSIGNED TO FUND PURPOSES	0	.00
G/L 890 UNASSIGNED FUND BALANCE	0	.00
 <u>TOTAL</u>	 1,041,141	 1,813,389.09

## 90--Transportation Vehicle Fund-- FUND BALANCE -- AGENCY ACCOUNTS -- Revised -- BUDGET-STATUS-REPORT

Fiscal Year 2016 (September 1, 2016 - August 31, 2017)

For the AUBURN SCHOOL DISTRICT NO. 408 School District for the Month of March, 2017

	ANNUAL BUDGET	ACTUAL FOR MONTH	ACTUAL FOR YEAR	ENCUMBRANCES	BALANCE	PERCENT
<u>A. REVENUES/OTHER FIN. SOURCES</u>						
1000 Local Taxes	0	.00	.00		.00	0.00
2000 Local Nontax	11,200	1,331.11	9,981.87		1,218.13	89.12
3000 State, General Purpose	0	.00	.00		.00	0.00
4000 State, Special Purpose	741,597	.00	.00		741,597.00	0.00
5000 Federal, General Purpose	0	.00	.00		.00	0.00
8000 Other Agencies and Associates	0	.00	.00		.00	0.00
9000 Other Financing Sources	0	.00	111,408.22		111,408.22-	0.00
A. <u>TOTAL REV/OTHER FIN.SRCS(LESS TRANS)</u>	752,797	1,331.11	121,390.09		631,406.91	16.13
 B. <u>9900 TRANSFERS IN FROM GF</u>	0	.00	.00		.00	0.00
 C. <u>Total REV./OTHER FIN. SOURCES</u>	752,797	1,331.11	121,390.09		631,406.91	16.13
 <u>D. EXPENDITURES</u>						
Type 30 Equipment	2,260,000	.00	1,346,074.87	0.00	913,925.13	59.56
Type 60 Bond Levy Issuance	0	.00	.00	0.00	.00	0.00
Type 90 Debt	0	.00	.00	0.00	.00	0.00
 <u>Total EXPENDITURES</u>	2,260,000	.00	1,346,074.87	0.00	913,925.13	59.56
 E. <u>OTHER FIN. USES TRANS. OUT (GL 536)</u>	0	.00	.00			
 F. <u>OTHER FINANCING USES (GL 535)</u>	0	.00	.00			
 G. <u>EXCESS OF REVENUES/OTHER FIN SOURCES</u>						
<u>OVER(UNDER) EXP/OTH FIN USES (C-D-E-F)</u>	1,507,203-	1,331.11	1,224,684.78-		282,518.22	18.74-
 H. <u>TOTAL BEGINNING FUND BALANCE</u>	1,109,088		2,991,759.54			
 I. <u>G/L 898 PRIOR YEAR ADJUSTMENTS (+OR-)</u>	XXXXXXXXX		.00			
 J. <u>TOTAL ENDING FUND BALANCE</u>	398,115-		1,767,074.76			
<u>(G+H + OR - I)</u>						

K. ENDING FUND BALANCE ACCOUNTS:

G/L 810 RESTRICTED FOR OTHER ITEMS	0	.00
G/L 819 RESTRICTED FOR FUND PURPOSES	1,109,088	2,991,759.54
G/L 830 RESTRICTED FOR DEBT SERVICE	0	.00
G/L 835 RESTRICTD FOR ARBITAGE REBATE	0	.00
G/L 850 RESTRICTED FOR UNINSURED RISKS	0	.00
G/L 889 ASSIGNED TO FUND PURPOSES	1,507,203-	1,224,684.78-
G/L 890 UNASSIGNED FUND BALANCE	0	.00
 <u>TOTAL</u>	 398,115-	 1,767,074.76

\*\*\*\*\* End of report \*\*\*\*\*



## 1. Approval of Minutes

Recommendation: That the minutes be approved.

Attached is the Strategic Plan 3.0 update. Click on the following link to access report: [Strategic Plan 3.0 Update](#). (You may wish to create a copy in Google drive for your personal editing purposes.)

## 4. Executive Session

An executive session will be held to discuss issues relating to RCW 42.30.110 (f), to receive and evaluate complaints or charges brought against a public officer or employee.