

AGENDA FOR BOARD OF DIRECTORS
AUBURN SCHOOL DISTRICT NO. 408
Monday, November 28, 2016

- I. TIME AND PLACE
 - 1. 7 p.m. at the James P. Fugate Administration Building
- II. ROLL CALL
 - 1. Roll call of board members
- III. PLEDGE OF ALLEGIANCE
- IV. AUDIENCE PARTICIPATION
 - 1. Written communications
 - 2. Scheduled communications
 - 3. Unscheduled communications
 - 4. Community groups and organizations
- V. LEGISLATIVE UPDATE
- VI. STUDENT AND STAFF RECOGNITION
 - 1. Recognition of student
 - 2. Recognition of staff
- VII. STUDENT PARTICIPATION
 - 1. Olympic Middle School PTSA report
 - 2. Activity/athletic report
 - 3. Auburn Riverside High School 2016 WIAA state volleyball championship
 - 4. Requests for travel
- VIII. SCHOOL PROGRAMS AND STUDENT ACHIEVEMENT
 - 1. Hazelwood Elementary School 2016-17 PLC presentation
 - 2. 2016-18 career and technical education district-wide plan
 - 3. West Auburn High School alternative learning programs
- IX. PERSONNEL
 - 1. Certificated and classified personnel report
 - 2. Requests for travel

X. FINANCE

1. Vouchers
2. Resolution No. 1228
3. Financial statements

XI. DIRECTORS

1. Approval of minutes
2. First reading of revised policies
3. Board reorganization
4. WSSDA conference
5. Discussion

LEGISLATIVE UPDATE

The board will discuss legislative items.

STUDENT AND STAFF RECOGNITION

1. Student Recognition

The Auburn School District Board of Directors will recognize Kekoa Talaiga, a fifth grade student at Hazelwood Elementary, for being an outstanding student.

Staff and students describe Kekoa as one of the nicest people you will ever meet. He makes his class better by helping his classmates, being extremely positive, and having an infectious personality.

He is a natural leader. He assisted kindergarteners to the correct bus during the first weeks of school, he shares his math learning at the whiteboard while engaging all of the students, and he includes all students all the time. Kids want to hang out with him because of how positive, inclusive, and supportive he is at all times.

Principal Sally Colburn said one of her fondest memories is when Kekoa demonstrated his family's native dance at the Family Heritage night for first and second graders.

Kekoa is a competitive athlete with great sportsmanship and he includes students of all ability levels at recess. He is considering being a football player or coach and would like to attend the University of Hawaii or University of Oregon.

2. Staff Recognition

The Auburn School District Board of Directors will recognize Sandra Gordon, kindergarten teacher at Hazelwood Elementary, for her outstanding service.

Sandra earned her teaching degree at Weber State University in Utah. She taught in Utah, Texas, and Washington. She has been teaching kindergarten at Hazelwood since 1993. She has taught preschool and kindergarten students her entire 51-year teaching career.

"I absolutely love teaching. When kindergarten students come in, they only have a little. By the end of the year, they are ready for college," Sandra jokes. "Every day I am making a difference."

Her colleagues and parents of her students agree. Co-worker Tricia Wharton said, "Sandie is the perfect kindergarten teacher. She is kind, gentle, funny, enthusiastic and smart. She is an educator in the fullest sense of the word."

Another Hazelwood kindergarten teacher, Lori Winslow said, "As I watched her teach, I realized I was in the shadow of a giant."

In her off-time, Sandra likes to read, scour Pinterest for ideas on classroom activities, and see her grandkids.

Her favorite quote about teaching is, "Let them be little, but inspire them to be great."

This will be her last year of teaching—she is retiring at the end of this school year. Sandra lives in Auburn and has three children who all graduated from Auburn High. Her husband is already retired and they plan to have fun together. She is looking forward to spending more time with her three grandchildren, one great grandchild, and her grand dog.

STUDENT PARTICIPATION

1. Olympic Middle School PTSA Report

Ryan Foster, associate superintendent of principal leadership and school programs, will introduce Jason Hill, Olympic Middle School principal, who will introduce Amy Collins, Patty Barney, and Shelby Miller, Olympic Middle School PTSA president, vice-president and secretary, respectively. The team will share a short PowerPoint as they present the Olympic Middle School PTSA Report and answer questions from the board.

2. Activity/Athletic Report-Olympic Middle School Drama Program

Ryan Foster will reintroduce Jason Hill who will introduce Jennifer Willson, Olympic Middle School coach, who will introduce Aali Kerow, Kaitlynn Collins, and Ashley Lopez Mora, students. The team will share information about the drama program at Olympic Middle School and answer questions from the board.

3. Auburn Riverside High School 2016 WIAA 4A State Volleyball Champions

Ryan Foster will introduce Christine Leverenz, Auburn Riverside High School volleyball coach, who shares the championship title with Jason Boyd, Stazi Edmonds, Mike Tienda, Karl Steffin, and Anne Fisher, Auburn Riverside High School coaching staff. Ms. Leverenz will introduce Anna Maracich, Calley Heilborn, Kaytlyn Heaslip, Lauren Smith, Kenna Ramirez, Taylor Wesche, Hailey Ferrell-Liepman, Brianna Ingram, Camden Heilborn, Holly Parrott, Ciera Zimmerman, Lanae Wohlmacher, Clarice Buchanan, and Kayla Clark, students and proud members of the 2016 WIAA 4A State Volleyball Championship team.

4. Requests for Travel

- a. Eighteen Auburn Riverside High School students request permission to travel to Blaine, Friday to Saturday, December 9-10. The purpose of the trip is to compete in the wrestling tournament. Lodging will be at the Northwoods Motel, meals will be at local restaurants, and travel will be by rental cars. All expenses will be paid by ASB funds. Kyle Jones, Eric Jones, and Michael Turner, Auburn Riverside High School coaches, request permission to accompany the students. One substitute will be needed for one day.
- b. Fifteen Auburn Mountainview High School students request permission to travel to Pasco, Friday to Saturday, December 16-17. The purpose of the trip is to compete in the "Best of the West" wrestling tournament. Lodging will be at the Super 8 hotel, meals will be at local restaurants, and travel will be by rental van. All expenses will be paid by ASB funds. Jay McGuffin and Nick Harteau, Auburn Mountainview High School coaches, request permission to accompany the students. No substitutes will be needed.

- c. Ten Auburn Riverside High School students request permission to travel to Berkeley, California, Friday to Tuesday, February 17-21, 2017. The purpose of the trip is to compete in the forensics tournament. Lodging will be at the Double Tree hotel, meals will be at local restaurants, and travel will be by airplane. All expenses will be paid by ASB funds. Mark Davis and Kelli Meeker, Auburn Riverside High School teachers/coaches, request permission to accompany the students. One substitute will be needed for one day.
- d. Ten Auburn Riverside High School students request permission to travel to Kansas City, Missouri, Thursday to Sunday, May 11-14, 2017. The purpose of the trip is to compete in the forensics tournament. Lodging will be at the Marriott hotel, meals will be at local restaurants, and travel will be by airplane. All student expenses will be paid by ASB funds. Mark Davis requests permission to accompany the students. One substitute will be needed for one day.
- e. Four Auburn Riverside High School students request permission to travel to Liberty Lake, Sunday to Wednesday, May 21-24, 2017. The purpose of the trip is to compete in the state 4A golf tournament. Lodging will be at the Best Western Plus hotel, meals will be at local restaurants, and travel will be by rental car. All expenses will be paid by ASB and district funds. Crystal Conant, Auburn Riverside High School teacher, requests permission to accompany the students. One substitute will be needed for three days.
- f. Ten Auburn Riverside High School students request permission to travel to Birmingham, Alabama, Saturday to Friday, June 17-23, 2017. The purpose of the trip is to compete in the forensics tournament. Lodging will be at the Marriott hotel, meals will be at local restaurants, and travel will be by airplane. All student expenses will be paid by ASB funds. Mark Davis requests permission to accompany the students. One substitute will be needed for five days.

Recommendation:

That the above requests for travel be approved as presented.

Olympic M.S. PTSA



**VISION: SUPPORT STUDENTS IN
THEIR ACADEMIC, SOCIAL AND
EMOTIONAL GROWTH.**

Officers



PRESIDENT- Amy Collins
VICE-PRESIDENT- Patty Barney
SECRETARY- Shelby Miller

Rebuilding Process



- The Journey
- Membership Drive



PTSA Contributions



- **Champion's Day Celebration**
- **Student Store**
- **Fun Run**
- **Staff Appreciation Luncheon**
- **Staff Dinner for Conferences**
- **End of the Year Celebration**
- **Culture Celebration**



Future Goals



- Fundraiser-PTSA Dance
- Dodge Ball Tournament
- Box Tops
- Concessions
- Increase Membership
- Continue to support students
- Continue to support staff



Final Thoughts....



IT'S ALL ABOUT THE KIDS!!!



SCHOOL PROGRAMS AND STUDENT ACHIEVEMENT

1. Hazelwood Elementary School 2016-17 PLC Presentation

Ryan Foster will introduce Sally Colburn, Hazelwood Elementary School principal, who will introduce Evelyn Limehouse, Hazelwood Elementary School assistant principal, and Tricia Wharton and Erin Scott, Hazelwood Elementary School staff. The team will give a brief PowerPoint overview of how the Professional Learning Community model has been utilized to increase student achievement at Hazelwood Elementary School and answer questions from the board. This presentation aligns with the 2013-16 District Strategic Plan: Goal 1, Objective 1, Strategy 1.

2. 2016-18 Career and Technical Education District-Wide Plan

Heidi Harris, assistant superintendent of student learning, will introduce Julie DeBolt, executive director of student learning and high school programs, and Lew Keliher, coordinator of CTE, to present the district's 2016-18 Career and Technical Education Plan, which includes the federal Carl Perkins grant application. [To view the CTE-District Wide Plan 2016-18, [click here](#).]

Recommendation:

That the board approve the 2016-18 Career and Technical Education District Plan and the 2016-17 Carl Perkins grant application as presented.

3. West Auburn High School Alternative Learning Programs 2016-17

Heidi Harris will introduce Julie DeBolt and Jon Aarstad, West Auburn High School principal, who will share a PowerPoint presentation of the 2016-17 Alternative Learning Programs Annual Report to the Board. This presentation aligns with the Auburn School Board Policy 2255, "Alternative Learning Experience Programs, G: District Supervision" and the 2016-17 school year stated district goals, Standard IV: "Hold school district accountable for meeting student learning expectations;" Goal 1: "Increase student achievement and post-secondary preparation for all students." Ms. DeBolt and Mr. Aarstad will answer questions from the board.

Recommendation:

That the board approve the 2016-17 school year ALE Programs and Curriculum.

Professional Learning Community



Hazelwood Elementary

A Vision...

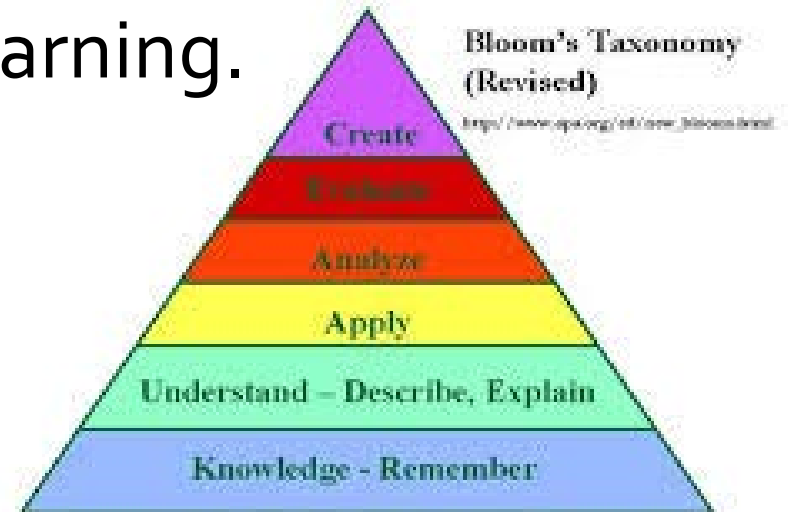
The vision of Hazelwood Elementary is to engage students in their own learning and empower them to achieve their full potential.
Engage, Empower, Achieve!



The Mission ...

The Hazelwood community teaches the critical skills for life-long success and engages students in their own academic achievement by providing time, resources and support systems to accelerate learning.

"
EDUCATION IS NOT
THE LEARNING OF FACTS,
BUT TRAINING THE MIND
TO THINK."
- ALBERT EINSTEIN



Based on an APA adaptation of Anderson, L.W. & Krathwohl, D.R. (Eds.) (2001)

PLC Structures and Supports

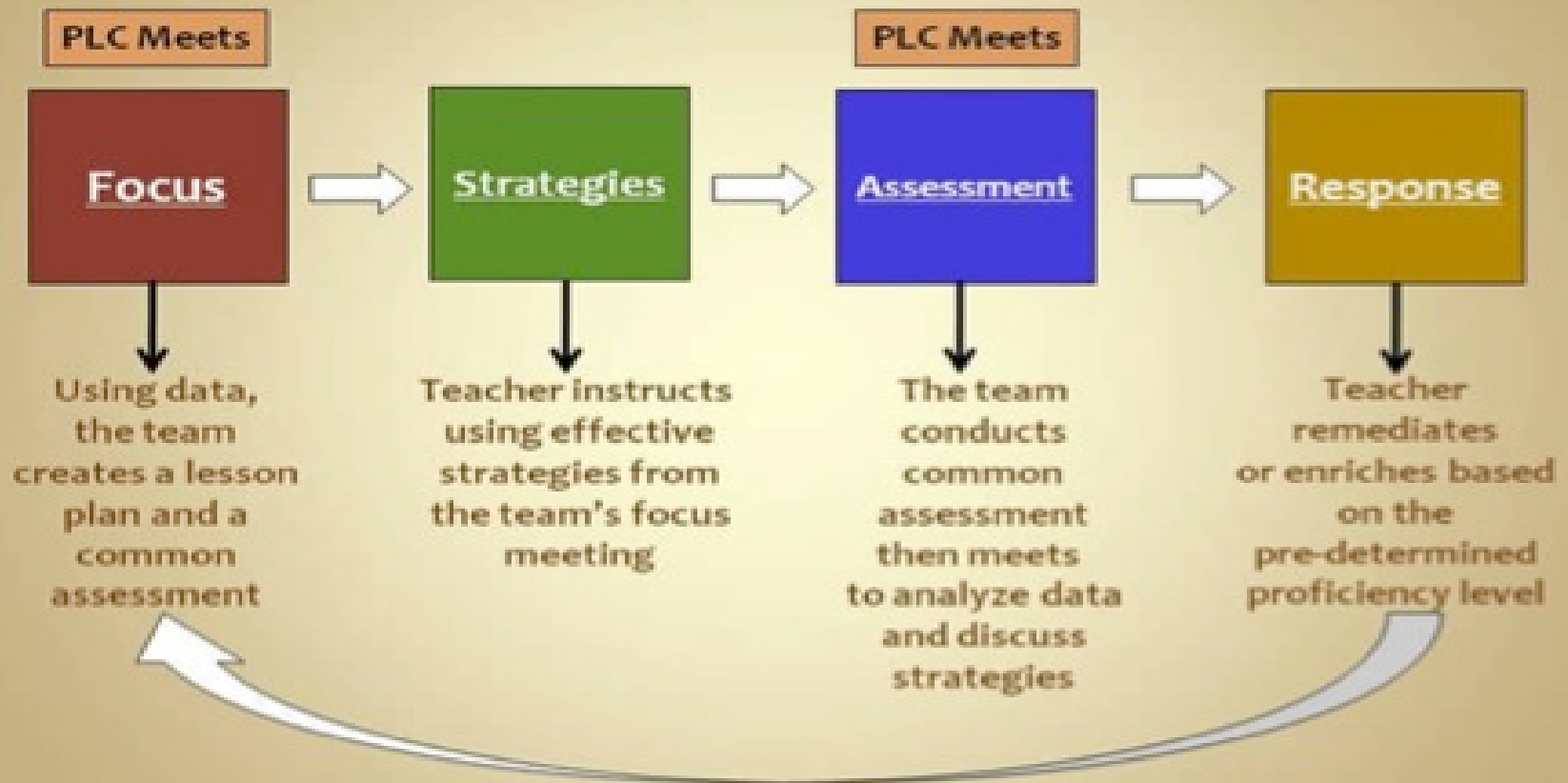
- Establish Team Norms with an annual review
- Data Sharing in multiple formats –
 - Google
 - Paper
 - MAPS
 - DIBELS
- Specialist support – Language Arts Specialist, ELL Teacher, Resource Room Teacher, PE, Music, Librarian, Counselor, Librarian/BOTS, Instructional Specialist, Principal, Assistant Principal

The 4 Essential Questions for Instruction

- 1. What do we want our students to know and be able to do?
 - CCSS and NGSS
- 2. How will we know they have learned it?
 - Formative and Summative Assessments
- 3. What will we do if they did not learn it?
 - Re-Teach, provide intervention, re-assess
- 4. What will we do if they learned it?
 - Enrich, move forward, accelerate

Teams Working Together

The Team Cycle



What do we want our students to know and be able to do?



1

Grade Level Team Members with Specialist Support Staff
work collaboratively for student success!

- ✓ Teachers meet to plan instruction –
selection of materials, timelines for
instruction, assessment tools, data
debrief
- ✓ Teachers construct intervention &
acceleration supports for students
- ✓ Teachers work collaboratively to assure
quality instruction for all

How will we know they have learned it?



Comprehensive Assessment System

Formative assessments

- Grade level common assessments
- District provided common assessments
- Progress monitoring

Summative assessments

- Trimester benchmarking
- MAPS
- SBA

Targeted DATA Reviews

- Trimester - whole building review 3 times a year
- Monthly Progress Monitoring
- Weekly with grade level teams and specialist support

What will we do if they did not learn it?

3

Small Group Instruction groups –

1. Groups are based on instructional need of the students
2. Team determines the critical skills to be taught
3. Students get what they need to be successful

Walk to MATH groups –

1. Groups range in size based on the need of the group of students
2. Staff determine the needs of the groups based on assessment results
3. Staff consult with Math Specialist and Math leads for best practices in the math instruction

Walk to Read groups –

1. Groups range in size based on the need of the group of students
2. Staff determine the needs of the groups based on assessment results
3. Staff consult with Language Arts Specialist for best practices in the reading instruction

whatever it takes!

Additional Supports

1. LAP and LAP targeted tutoring
2. Resource Room supports
3. Extended Day and Summer School
4. ELL Tutoring

What will we do when they already learned it?

4



Horizontal enrichment

- Focus on the depth of knowledge in a targeted skill set or area of study
- Encourage communication skills on newly acquired information or skills – student expert
- Focused interest area for the student to dig deeper

Acceleration in the pacing of instruction

- Move student to the next level in reading or math skill set
- Pre-assessment allows for modifying instruction on specific skill
- Creating opportunities for students to move ahead in content knowledge and skill acquisition

How can we extend and enrich the learning for students that have reached proficiency?

- Monitor and adjust for student progress and appropriate grouping
- Maximize building resources: human and material
- Enrich learning through connected fiction and nonfiction text in reading
- Empower learning through real world problem solving and personalized learning in math

Hazelwood @ Work



COLLABORATION:

Two or more people working together towards shared goals



Career and Technical Education

The Auburn Way

November 28, 2016

*The object of education is to prepare the young
to educate themselves throughout their lives...*

~ Robert M. Hutchins

Presentation Outline

- CTE Vision suggestion from the CTE Advisory committee
- 2016-2017 CTE focus
- Program framework updates
- Purpose and use of federal Carl Perkins Grant Funds

Suggested CTE Vision

as written by our very own CTE Advisory Chairs

Career & Technical Education:
preparing tomorrow's
workforce through real world
applications.

CTE Advisory Chairs

listed skills needed in future employees:

Soft Skills

- Be: Responsible (to yourself and others), accountable, eager to learn
- Learn: Communication skills, reading/writing, problem solving

People Skills

- Have: A strong work ethic, a positive attitude, good attendance (they actually listed perfect attendance)

CTE Goals for 2016-2017

2016 – 2017 CTE Goals	Alignment	Support
Continue cross-district collaboration in program areas targeting increasing student achievement.	State: Improve the access to and quality of CTE District Goal 1, Student Achievement Objective 1, PLCs will be employed	<ul style="list-style-type: none"> Continue central office and building support of program area PLCs Professional development in creating assessments aligned to standards OSPI competitive Grants for CTE
Continued exposure to Programs of Study with Middle and High School students and parents	State: every student receives comprehensive career guidance District Goal 1, Student Achievement Objective 1, Monitor and adjust instruction to impact student learning.	<ul style="list-style-type: none"> Middle School, Reaching Out Fair Middle School Career Conference Expanding your Horizons Rotary Job Shadow High School Career Conference Future Freshman Night
Collect and analyze data: Enrollment; program completers; dual credit; industry certifications; non-traditional populations	State: Results-driven education system District Goal 1, Student Achievement Objective 1 and 5, increase and exceed Washington's on-time and extended high school graduation rates.	<ul style="list-style-type: none"> Perkins Grant measures Tech Prep and College in the classroom
CTE teachers and administrators to be fully prepared and supported in their roles as educator instructional leaders.		

Programs of Study

- Deliberate sequence of courses
- Mixture of academic and technical high school courses
- Bridges high school to post-secondary options
- Focus on current demands in a global economy
- Fills the graduation requirement for a High School and Beyond plan—one of the first pieces in a student's portfolio

ASD CTE Scope and Sequence through Education and Training

Auburn (A)



Auburn Mountainview (AM)



Auburn Riverside (AR)



West Auburn (WA)



Alpac Elementary (B)
Gildo Rey Elementary (B)
Ilalko Elementary (B)
Lakeland Hills Elementary (B)

Dick Scobee Elementary (C)
Evergreen Heights Elementary (C)
Washington Elementary (O/C)

Chinook Elementary (O)
Pioneer Elementary (O)
Terminal Park Elementary (O)

Arthur Jacobsen Elementary (R)
Hazelwood Elementary (R)
Lake View Elementary (R)
Lea Hill Elementary (R)

Mt. Baker MS

STEM Fundamentals of Information Technology
STEM Construction/Engineering
STEM Robotics

Cascade MS

STEM Construction
STEM Robotics
STEM Kitchen Sciences

Olympic MS

STEM Fundamentals of Information Technology
STEM Robotics

Rainier MS

STEM Fundamentals of Information Technology
STEM Computer Programming
STEM Construction
STEM Robotics

Aerospace Assembly @ AHS (A, AM, AR, WA)

Automotive @ AHS (A, AM, AR, WA)

Business Ed. / Career Choices (A, AM, AR, WA)

Commercial Art / Graphic Design (A, AM, AR)

Computer Networking (A, AM, AR)

Cosmetology (off site, all ASD students)

Culinary Arts (A, AM, AR)

Electronics / Robotics (A, AM, AR)

Engineering / Drafting (A, AM, AR)

Family & Consumer Science (A, AM, AR)

Horticulture (A, AM)

Interactive Media & Gaming @ WA (A, AM, AR, WA)

Jewelry (A, AM, AR)

JROTC @ AMHS (A, AM, AR, WA)

Marketing (A, AM, AR, WA)

Newspaper (A, AM, AR)

Power, Energy & Transportation (A, AM, AR)

Sign Language (AR)

Small Gas Engines @ AHS (A, AM, AR, WA)

Sports Medicine (A, AM, AR)

Visual Communications (A, AM, AR)

Web Design (A, AM, AR)

Welding / Machining @ AHS (A, AM, AR, WA)

Woodworking / Construction (A, AM, AR, WA)

Work Based Learning (A, AM, AR, WA)

The 16 clusters were established at the national level by the States' Career Clusters Initiative and are recognizable across the United States in middle schools, high schools, community and technical colleges, and the workforce. The Auburn School District offers the following **13** of **16** career pathways;



Agriculture, Food & Natural Resources

Horticulture Science
Natural Resource Systems

Architecture and Construction

Architecture and Construction

Arts, AV Technology & Communications

Jewelry manufacturing
Performing Arts
Visual Arts

Education & Training

Education & Training
Sign Language Interpreting

Finance

Finance

Government & Public Administration

Military

Health Science

Health & Medical Services

Hospitality & Tourism

Culinary Arts

Information Technology

Administrative Support
Information Support
Network Systems
Web & Digital Communication

Manufacturing

Aerospace Assembly
Manufacturing

Marketing

Marketing

Science, Technology, Engineering & Mathematics

STEM: Science, Technology, Engineering and Math

Transportation, Distribution & Logistics

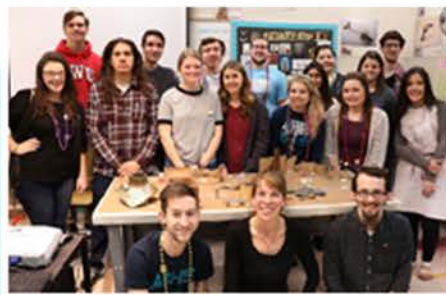
Automotive Technology

The Career and Technical Education Model



Extended Learning

Learning activities related to CTE course which occur **beyond the school day and/or school year** under the supervision of a certified CTE instructor



Student
Leadership



Classroom Instruction/Theory

Represented in framework; alignment of academic and industry standards, and 21st Century Leadership Skills

Shop/Laboratory

Where theory is put into practice; hands-on, project based approach to experiencing learning.
Development of technical and professional skills.

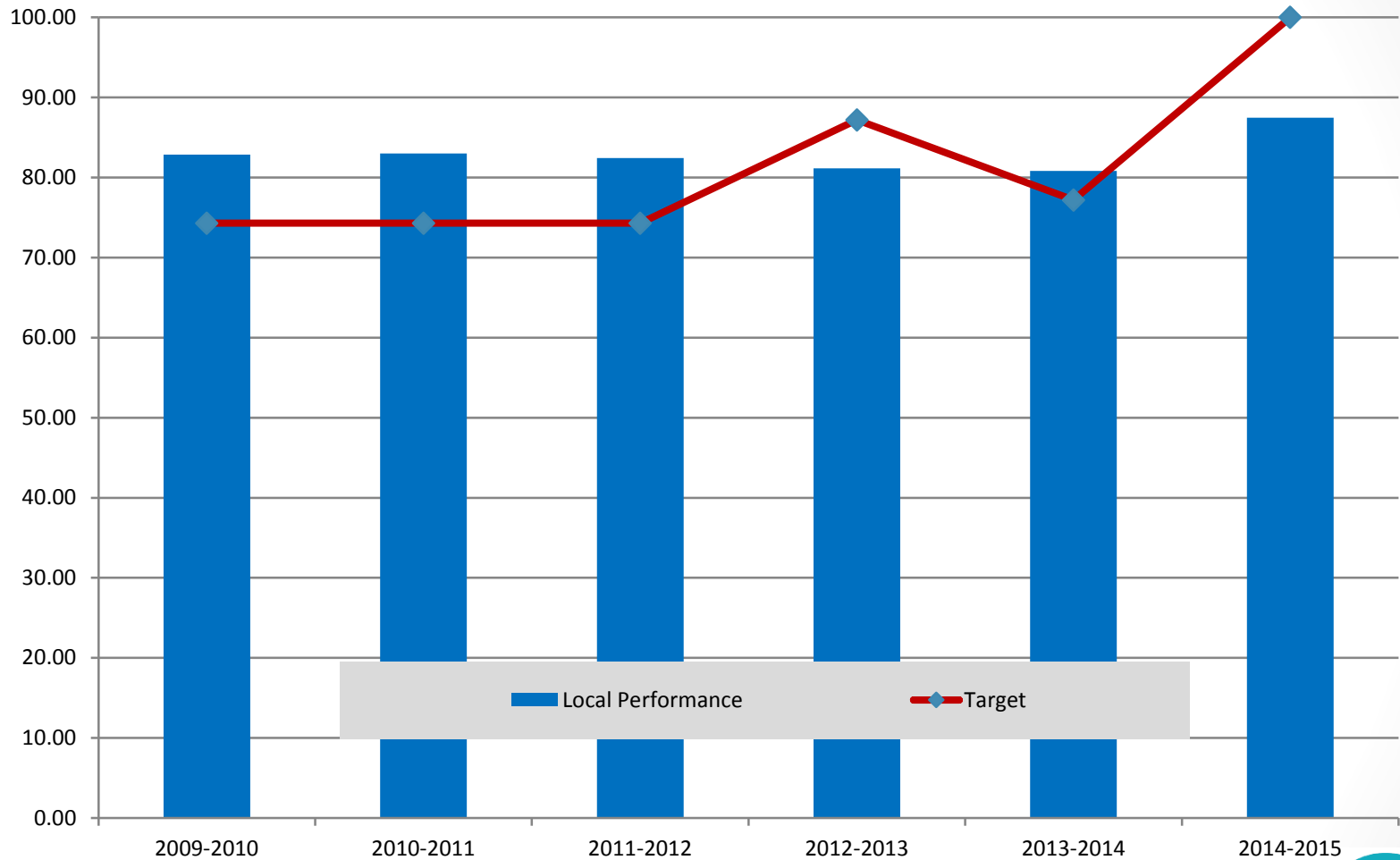
2016-2017 Program Area Updates

- American Sign Language
 - Culinary Arts
 - Family and Consumer Science
 - Sports Medicine
-
- Possible future area: Introduction to Health Care

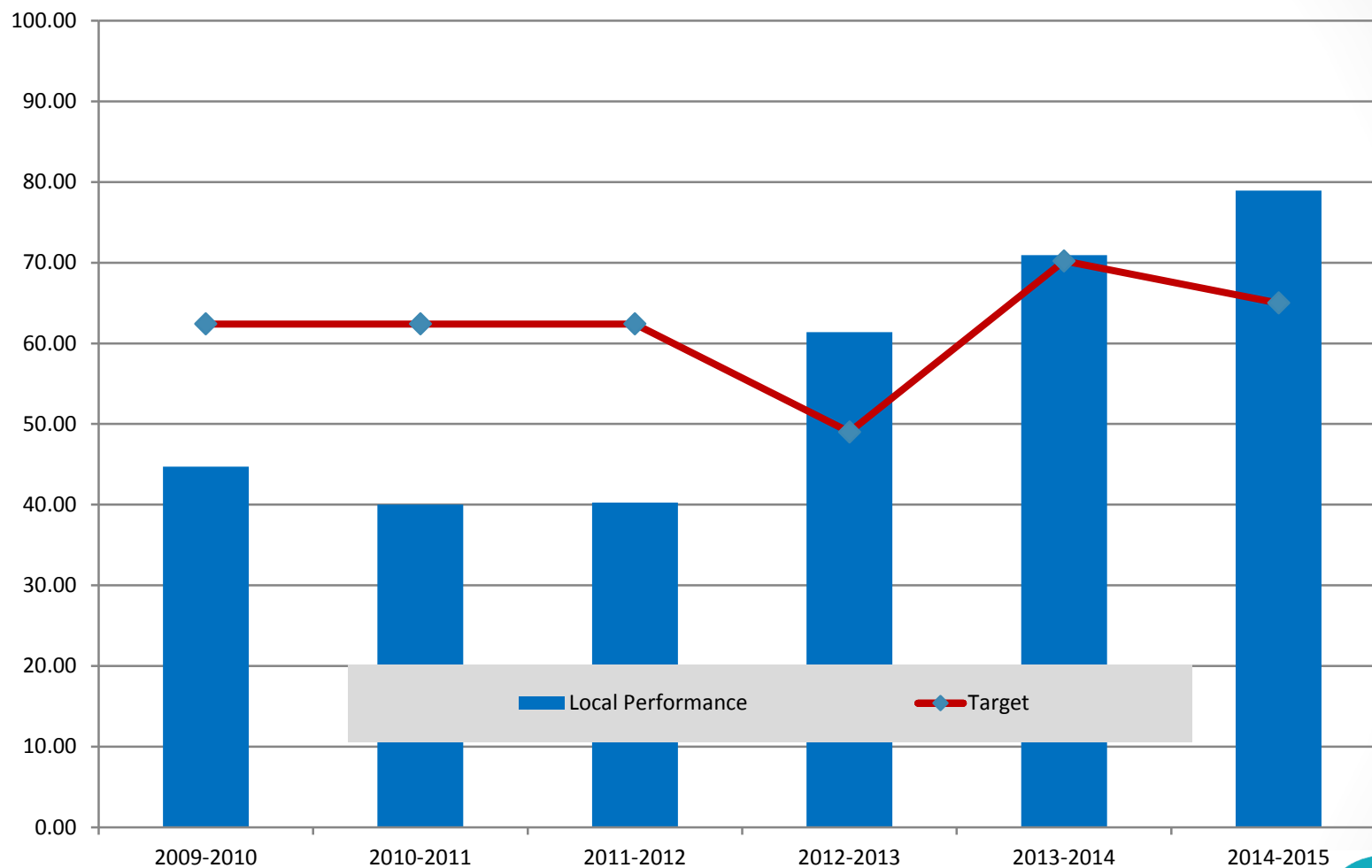
2015-2016 vs. 2016-2017 Updates

- Last year we updated and received approval for 18 frameworks in 10 CTE areas.
- This year we are updating 10 frameworks in 4 areas.
- CTE programs are required to teach to all State and National standards.

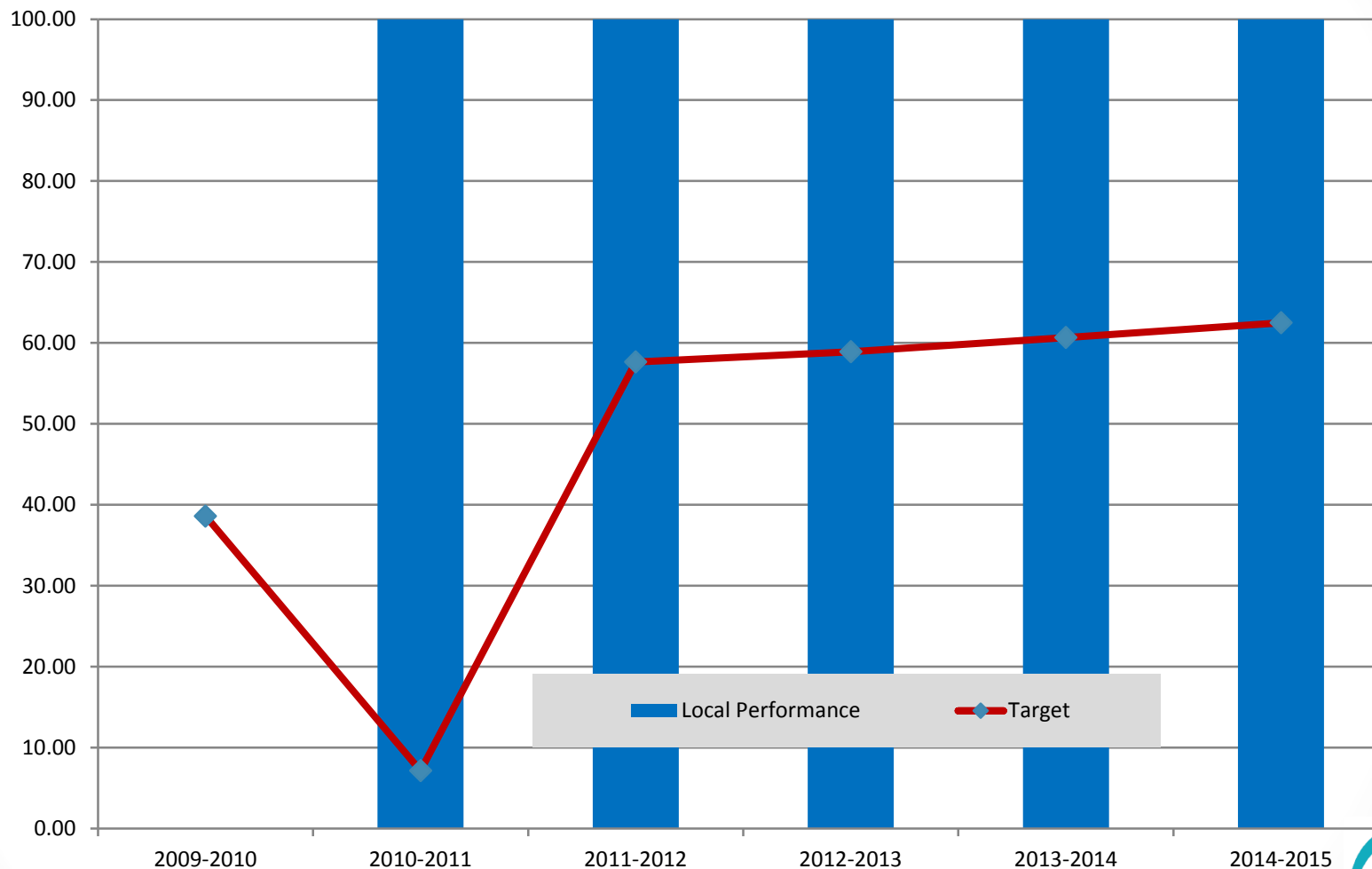
Indicator 1S1 Language Arts/Reading Achievement



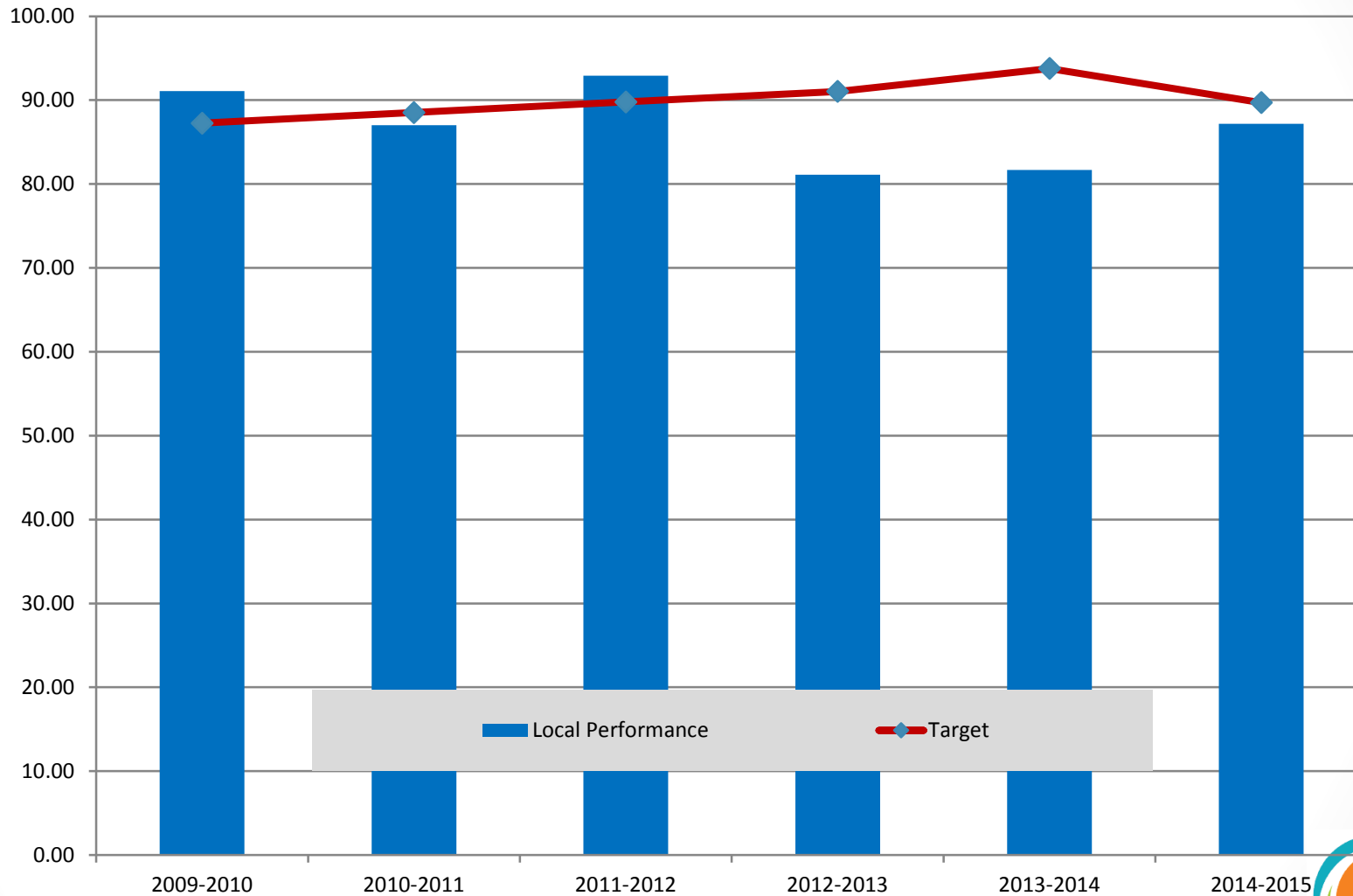
Indicator 1S2 Mathematics Achievement



Indicator 2S1 Industry-Recognized Assessment for Certification



Indicator 3S1 Graduation Rates (including GED)



Perkins Grant Funding 2016-2017

For the 2016-2017 school year, the Auburn School District has received \$122,973 to support our CTE programs in the following areas:

- Support industry certifications for students
- Career awareness and information tools and resources for students
- Provide para-educator support in CTE Programs at comprehensive high schools
- Career development opportunities and field trips for students
- Professional development for teachers
- Dual credit options for students

We ask the board to approve the 2016-2018 Career and Technical Education District Plan and the 2016-2017 Carl Perkins grant application as presented.

QUESTIONS?

Alternative Learning Programs

West Auburn High School

Board Policy 2255*

West Auburn High School

- Traditional high school (Day Program)
 - Smaller learning environment
 - 9th Grade academy
- Virginia Cross
 - Tribal partnership
- Alternative Programs
 - Virtual Program
 - Learning Center
 - Graduation Alliance

Types of Alternative Learning Programs

- Remote = an alternative learning experience course or course work that is not an online course where the student has in-person instructional contact time for less than 20 percent of the total weekly time - **NONE**
- Online = means a course or a grade level course work in which...
 - More than half of the course content is delivered electronically using the internet
 - More than half of the teaching is conducted from a remote location through an online course learning management system - **Virtual and Grad Alliance**
- Site-Based = an alternative learning experience course or course work that is not an online course where the student has in-person instructional contact time for at least 20 percent of the total weekly time for the course - **Learning Center**

Identification Process/Intake

- How to place kids into alternative programs?
 - Credits, how many do they have, which credits do they need?
 - Age, how long they have before they age out?
 - Schedule, jobs, families?
 - Learning styles and anxiety; what environment will work best for them?
- How are parents/guardians involved in the process?
 - Parents/guardians must attend the intake meeting to discuss strengths and weaknesses of the student, and be aware of what the different programs can offer.
 - Handful of students are self-enrolled (must be at least 18).

Virtual Program

- 30 Students maximum
- 1 certificated teacher
- 1 classified staff member
- Virtual works well for the student that is self-motivated, has higher level of maturity, goal oriented.
- Students generally have family obligations or work schedules that prevent them from attending school on a daily basis.

Typical Duration of the Program

- 2 hours per week must have face to face contact with certificated teacher
 - Student comes to the school 1 hour, twice a week
 - Can be completed by meeting at school
 - Face time
 - Skype etc...
- Expect 28 hours a week of course work completed outside of school
- Tracked by progress made, can also be tracked by online program

Specific Learning Goals and Performance Objectives

- Students are expected to complete, on average, one course a month.
- If students complete one course a month they will receive 5 credits for the year; a students who receives all their credits in a day school environment will receive 6 credits.
- One course a month is the minimum expectation. I encourage them to receive no less than 6 credits a year, so they need to complete 2 courses in a month, twice during the school year.
- Some students have completed two courses a month more often, receiving more than 6 credits in a year.

Instructional Materials Used

- Online APEX is used for every instructional course
- Teacher support provided at face to face meetings, or via e-mail
- Some students are also enrolled in Work Based Learning, receiving elective credits

Learning Center Program

- 60 students
- 2 certificated staff members
- 1 classified staff member
- Learning Center works well for students who need a quiet environment, even smaller class sizes
- Depression/anxiety
- More face to face contact than virtual provides
- Work conflicts/family obligations

Typical Duration of the Program

- 8 hours per week contact with certificated teacher
 - 2 hours day/4 days a week
 - Must be face to face at school
- Expect 22 hours of coursework completed outside of school
- Tracked by progress made, can also be tracked by online program if online course is being used
- 4 different meeting times during the day:
 - 9:00 AM – 11:00 AM
 - 12:30 PM – 2:30 PM
 - 3:00 PM – 5:00 PM
 - 5:30 PM – 7:30 PM

Specific Learning Goals and Performance Objectives

- Students are expected to complete, on average, one course a month.
- If students complete one course a month they will receive 5 credits for the year; a student who receives all their credits in a day school environment will receive 6 credits.
- One course a month is the minimum expectation; I encourage them to receive no less than 6 credits a year, so they need to complete 2 courses in a month, twice during the school year.
- Some students have completed 2-3 courses a month more often, receiving more than 6 credits in a year.
- I will use this program for students who need to make up the credits at a faster rate due to age restrictions (almost 21 years old).

Instructional Materials Used

- Combination of instructional materials used
- APEX online program
- District Approved Curriculum
- Work based learning
- Running Start

Graduation Alliance Program

- All online
- Contracted company
- Teachers are not district employees
- Program provides computers to our students

Typical Duration of the Program

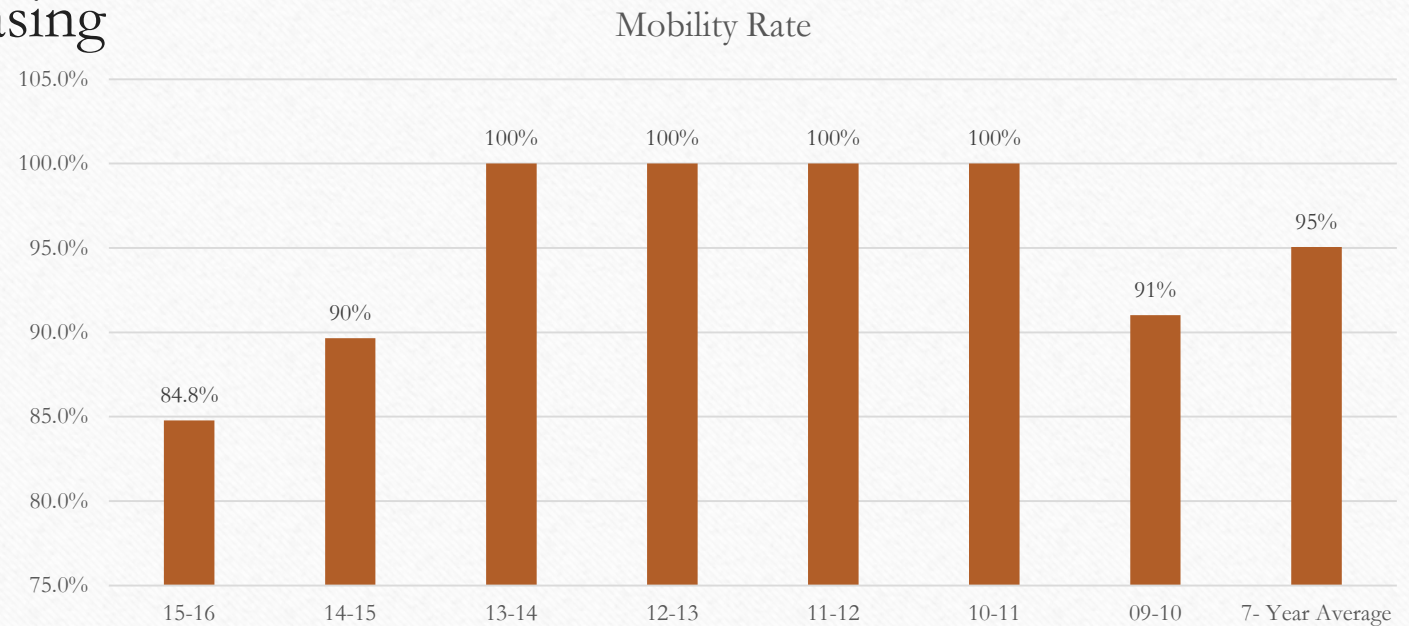
- Student progress is tracked using their online program
- Principal receives a list of students and progress made on a monthly basis
- Students are given “coaches” by the program
 - Coaches provide tracking
 - Support for program questions
 - Academic counseling
 - Not certificated teachers

Specific Learning Goals and Performance Objectives

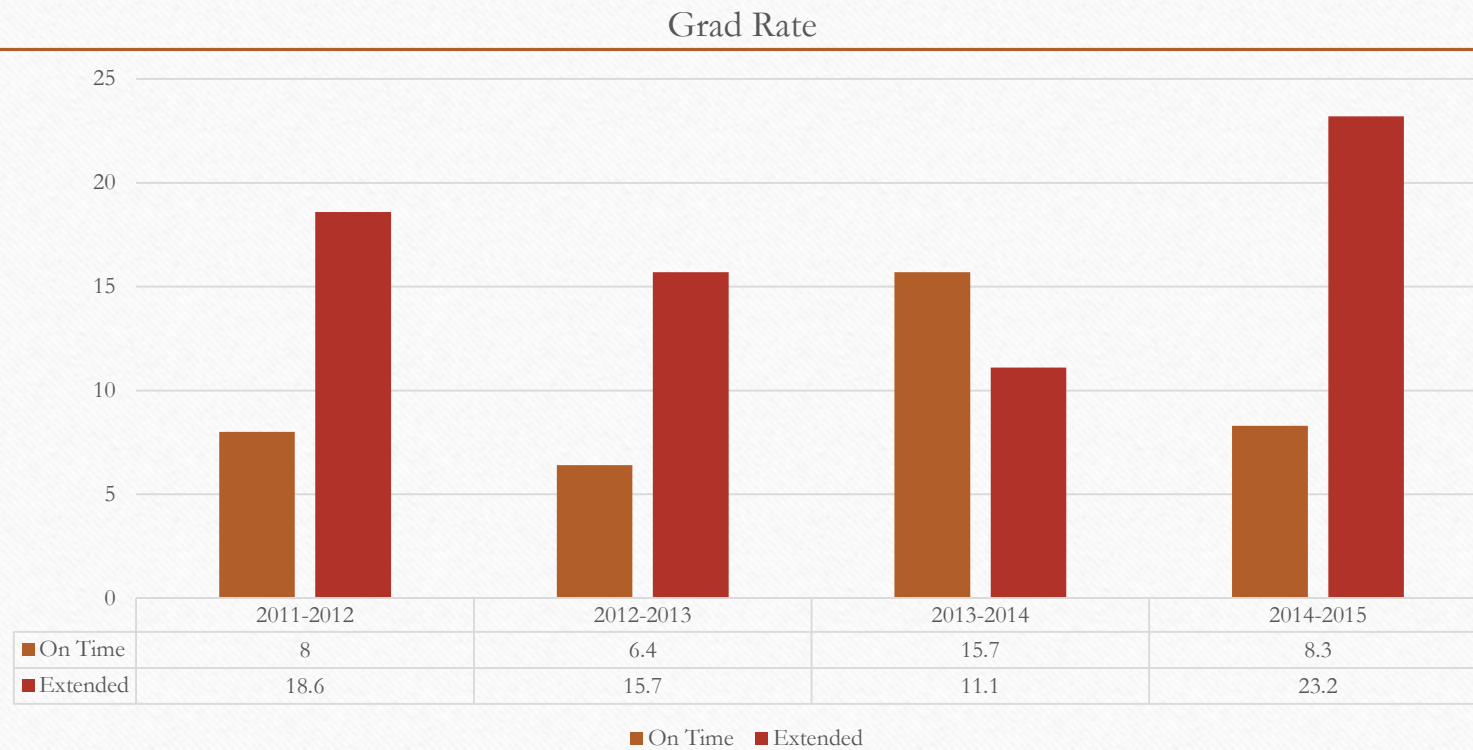
- Students are required to make progress on a monthly basis
- After three months of no progress they are dropped from the program

Results of any Self-Evaluations

Mobility rate is decreasing



On Time and Extended Grad Rate Data



WAHS Program Review

- May/June 2016 – a team met to begin a formal review of West Auburn High School programs.
- Purpose was set to provide and reflect information empowering West Auburn to be a high performing alternative high school
- 4 Priorities were established
 - Increase Graduation Rates
 - Insure Credit Attainment
 - Establish Postsecondary Career Pathways
 - Increase Student Engagement (attendance, enrollment, discipline)

WAHS Program Review

- The team committed to conducting a thorough review during 2016-2017
 - Strength and Concerns for current programs
 - Data Analysis - school performance, attendance, behavior
 - Student interviews, focus groups, observations
 - Impacts of CORE 24

WAHS Program Review-Currently

- Created system in skyward to identify students by program type
- Coding past students to pull historical data by program
- Revising Policy 2255
- Create/Identify appropriate School Program Review Tools

WAHS Program Review-Next Steps

- Calendar Visitations and Focus Groups
- Research “What Works”
- Create recommendations for consideration
- WAHS begins the fully revised School Improvement Plan process in September 2017
- Implement changes through the new SIP plan September 2018

Questions and Request for Board Approval

**Curriculum Sources 2016-17 for
West Auburn High School's Learning Center Program**

SUBJECT	TEXTBOOK/SOURCES
Language Arts	
LA 9-Reading	<i>William Shakespeare: Life of Drama; Why Shakespeare?</i> films; Franco Zeffirelli <i>Romeo & Juliet</i> film; APEX English 9 Common Core Sem 1; <i>To Kill a Mockingbird</i> , by Harper Lee; <i>Nectar in a Sieve</i> , by Kamala Markandaya; <i>The Giver</i> , by Lois Lowry; or <i>Nothing but the Truth</i> , by Avi
LA 9-Writing	APEX English 9 Common Core Sem 2; <u>Vocabulary and Spelling Success</u> , published by Learning Express, LLC., 2002; <i>Collections</i> , published by Houghton Mifflin Harcourt, 2015
LA 10-Reading	<i>1984</i> , by George Orwell; <i>Cannery Row</i> , by John Steinbeck; <i>Dracula</i> , by Bram Stoker; <i>I Know Why the Caged Bird Sings</i> , by Maya Angelou; <i>Lord of the Flies</i> , by William Golding; <i>Of Mice and Men</i> , by John Steinbeck; <i>That was Then, This is Now</i> , by S.E. Hinton; <i>The Chocolate War</i> , by Robert Cormier; <i>William Shakespeare: Life of Drama; Why Shakespeare?</i> films; Kenneth Branagh <i>Much Ado About Nothing</i> , 1993;
LA 10-Writing	APEX English 10 Common Core Sem 2; from <u>English Essentials</u> , published by Townsend Press Book Center; <i>Collections</i> , published by Houghton Mifflin Harcourt, 2015
American Literature 1	<i>Collections</i> , published by Houghton Mifflin Harcourt, 2015; <i>Flowers for Algernon</i> , by Daniel Keyes; <i>DaVinci Code</i> , by Dan Brown; <i>Color Purple</i> , by Alice Walker; <i>Where the Heart Is</i> , by Billie Letts; <i>Scarlet Letter</i> , by Nathaniel Hawthorne; <i>Fahrenheit 451</i> , by Ray Bradbury; <i>The Things They Carried</i> , by Tim O'Brien; <i>The Bean Trees</i> , by Barbara Kingsolver; <i>Not Without My Daughter</i> , by Betty Mahmoody; <i>One Flew Over the Cuckoo's Nest</i> , by Ken Kesey; APEX English 11 Common Core Sem 1
American Literature 2	<i>Collections</i> , published by Houghton Mifflin Harcourt, 2015; <i>The Pearl</i> , by John Steinbeck; <i>Of Mice and Men</i> , by John Steinbeck; <i>The Great Gatsby</i> , by F. Scott Fitzgerald; <i>The Time Machine</i> , by H. G. Wells; <i>Animal Farm</i> , by George Orwell; <i>Frankenstein</i> , by Mary Shelly; APEX English 11 Common Core Sem 2
English 12, Semester 1	APEX English 12 Common Core Sem 1
English 12, Semester 2	APEX English 12 Common Core Sem 1
Humanities 1	<i>Collections</i> , published by Houghton Mifflin Harcourt, 2015
Humanities 2	<i>Collections</i> , published by Houghton Mifflin Harcourt, 2015
Individualized Reading 1	Individually selected novels

Curriculum Sources 2016-17 for West Auburn High School's Learning Center Program

Individualized Reading 2	Individually selected novels
Social Studies	
WA State History	<i>The Washington Journey</i> , published by Gibbs Smith Education; “The Great Journey West” by <u>National Geographic</u>
Geography	<i>World Geography: Building a Global Perspective</i> , published by Prentice Hall, 1998; APEX Geography and World Cultures
World Studies	<i>History and Life</i> , published by Scott, Foresman and Company
US History 1	<i>The American Republic Since 1877</i> , published by Glencoe, 2003; APEX U.S. History Core Semester 2
US History 2	<i>The American Republic Since 1877</i> , published by Glencoe, 2003; APEX U.S. History Core Semester 2
Civics	<i>Civics: Responsibilities and Citizenship</i> , published by Glencoe, 1992; APEX U.S. Government and Politics Core
Global Issues	United Nations Articles (http://www.un.org/News/); IZZIT.org documentary films; individually selected articles; APEX U.S. and Global Economics Core
Multicultural Studies	APEX Multicultural Studies
Math	
Math Foundations 3	APEX Fundamental Math Sem 1
Math Foundations 4	APEX Fundamental Math Sem 2
Algebra 1	Algebra I Common Core Sem 1
Algebra 2	Algebra I Common Core Sem 2
Geometry 1	Geometry Common Core Sem 1
Geometry 2	Geometry Common Core Sem 1
Algebra 3	Algebra II Common Core Sem 1
Algebra 4	Algebra II Common Core Sem 2
Personal Finance 1	Mathematics of Personal Finance Sem 1
Personal Finance 1	Mathematics of Personal Finance Sem 1
Science	
Biology 1	<i>Biology: The Dynamics of Life</i> , published by Glencoe, 1998
Biology 2	<i>Biology: The Dynamics of Life</i> , published by Glencoe, 1998
Earth Science	<i>Earth Science: Geology, the Environment, and the Universe</i> , published by Glencoe, 2008
PE/Health	
Co Ed PE 1	<i>Physical Education Packets</i> , published by The Advantage Press, Inc., 1992

**Curriculum Sources 2016-17 for
West Auburn High School's Learning Center Program**

Co Ed PE 2	<i>Physical Education Packets</i> , published by The Advantage Press, Inc., 1992
Health	<i>Health-Choosing Wellness</i> , published by Prentice Hall, 1992; APEX Skills for Health CORE
<i>Fine Arts</i>	
Art Appreciation	APEX Art Appreciation
Music Appreciation 1	APEX Music Appreciation Sem 1
Music Appreciation 1	APEX Music Appreciation Sem 1
<i>Electives</i>	
Personal Growth 1	<i>Clear Thinking and Writing</i> by John Langan, 2010; <i>Reader's Handbook: A Student Guide for Reading and Learning</i> , published by Great Source Education Group, 2002; Khan Academy; IZZIT.org documentary films
Personal Growth 1	Career Cruising; <i>Clear Thinking and Writing</i> by John Langan, 2010; Khan Academy; IZZIT.org documentary films
<i>Credit Recover Courses</i>	
	ALL credit recovery courses use APEX curriculum

1. Certificated and Classified Personnel Report

Recommendation: That the board approve the attached report.

a. Rob Swaim, Auburn School District athletics director; Katie Henry, Auburn High School athletics coordinator; Chris Carr, Auburn Mountainview High School athletics director; and Doug Aubert, Auburn Riverside High School athletics director, request permission to travel to Nashville, Tennessee, Thursday to Thursday, December 8-15. The purpose of the trip is to attend the 2016 National Athletic Directors Conference. Lodging will be at the Gaylord Opryland Resort and Convention Center, meals will be at local restaurants, and travel will be by airplane. All trip expenses will be paid by district funds. One substitute will be needed for six days.

Recommendation: That the above trip requests be approved as presented.

PERSONNEL REPORT - CERTIFICATED

	Classification	Job Type	Building	Name	Start Date	Hours	Rate of Pay	Comment
Curriculum-Noncurriculum								
	CERTIFICATED	2016-17 AST DEVELOPMENT	AUBURN RIVERSIDE	MALONE, CORIN	9/1/2016	20	\$46.63	
	CERTIFICATED	ADVISORY MTG CATERING PREP	AUBURN HIGH	KILLIAN, MARCI	10/24/2016	2	\$35.25	
	CERTIFICATED	CLASSROOM MOVE	TERMINAL PARK	UFFALUSSY LAFAYETTE, LESLIE	8/22/2016	28	\$36.98	
	CERTIFICATED	COMMON MATH ASSMT	AUBURN RIVERSIDE	MORGAN, ROBERT	9/1/2016	10	\$53.40	
	CERTIFICATED	CONFERENCES	CASCADE	DUNNIHO, JOETTE	11/16/2016	9	\$28.72	
	CERTIFICATED	CONFERENCES	ARTHUR JACOBSEN	ELLIOTT, NAOMI	11/16/2016	21	\$47.36	
	CERTIFICATED	CURRICULUM PLANNING	MT. BAKER	HAWK, MINDY	11/2/2016	2	\$53.40	
	CERTIFICATED	CURRICULUM PLANNING	MT. BAKER	LINDGREN, SHARON	11/2/2016	2	\$48.01	
	CERTIFICATED	ED REFORM STRATEGIES	RAINIER	ALLEN J. SCOTT	9/1/2016	6	\$53.40	
	CERTIFICATED	ED REFORM STRATEGIES	CASCADE	ALLEN, ANDREW	9/1/2016	6	\$33.97	
	CERTIFICATED	ED REFORM STRATEGIES	OLYMPIC	BAILEY, CHRISTAL	9/1/2016	9	\$33.97	
	CERTIFICATED	ED REFORM STRATEGIES	OLYMPIC	BARIL, TYLER	9/1/2016	9	\$51.03	
	CERTIFICATED	ED REFORM STRATEGIES	MT. BAKER	BROWN, JASON	9/1/2016	6	\$45.97	
	CERTIFICATED	ED REFORM STRATEGIES	MT. BAKER	BURKHALTER, ARLENE	9/1/2016	6	\$53.40	
	CERTIFICATED	ED REFORM STRATEGIES	MT. BAKER	CARNAHAN, ERIN	9/1/2016	6	\$53.40	
	CERTIFICATED	ED REFORM STRATEGIES	OLYMPIC	CARNEY, ORLYN	9/1/2016	6	\$52.36	
	CERTIFICATED	ED REFORM STRATEGIES	MT. BAKER	CHAR, JAMES	9/1/2016	4	\$53.40	
	CERTIFICATED	ED REFORM STRATEGIES	RAINIER	CHAVEZ, LUIS	9/1/2016	6	\$48.01	
	CERTIFICATED	ED REFORM STRATEGIES	MT. BAKER	COWAN, AARON	9/1/2016	6	\$43.27	
	CERTIFICATED	ED REFORM STRATEGIES	RAINIER	DAVIDSON, SCOTT	9/1/2016	6	\$51.13	
	CERTIFICATED	ED REFORM STRATEGIES	OLYMPIC	DE LA CRUZ CORREA, OCTAVIC	9/1/2016	6	\$33.97	
	CERTIFICATED	ED REFORM STRATEGIES	CASCADE	DEAVER, MARCUS	9/1/2016	4	\$53.40	
	CERTIFICATED	ED REFORM STRATEGIES	MT. BAKER	DECKER, MICHAEL	9/1/2016	6	\$51.13	
	CERTIFICATED	ED REFORM STRATEGIES	CASCADE	DOZIER, ALETHEA	9/1/2016	4	\$49.51	
	CERTIFICATED	ED REFORM STRATEGIES	RAINIER	DUNHAM, RYAN	9/1/2016	6	\$51.13	
	CERTIFICATED	ED REFORM STRATEGIES	CASCADE	DUNNIHO, JOETTE	9/1/2016	6	\$28.72	
	CERTIFICATED	ED REFORM STRATEGIES	MT. BAKER	EMMONS, RODNEY	9/1/2016	6	\$53.40	
	CERTIFICATED	ED REFORM STRATEGIES	AUBURN MOUNTAINVIEW	FAGER, ELSA	9/1/2016	4	\$53.40	
	CERTIFICATED	ED REFORM STRATEGIES	RAINIER	FURTH, PAUL	9/1/2016	6	\$53.40	
	CERTIFICATED	ED REFORM STRATEGIES	RAINIER	GIFFORD, ALVIN	9/1/2016	4	\$38.14	
	CERTIFICATED	ED REFORM STRATEGIES	CASCADE	GODFREY, DEAN	9/1/2016	6	\$40.15	
	CERTIFICATED	ED REFORM STRATEGIES	RAINIER	HAGEN, BRAD	9/1/2016	6	\$32.28	
	CERTIFICATED	ED REFORM STRATEGIES	OLYMPIC	HARRING MARSHALL, STEPHANIE	9/1/2016	6	\$28.33	
	CERTIFICATED	ED REFORM STRATEGIES	RAINIER	HARTEAU, NICHOLAS	9/1/2016	6	\$28.72	
	CERTIFICATED	ED REFORM STRATEGIES	MT. BAKER	HAWK, MINDY	9/1/2016	6	\$53.40	
	CERTIFICATED	ED REFORM STRATEGIES	RAINIER	HERREN, RULON	9/1/2016	6	\$50.37	
	CERTIFICATED	ED REFORM STRATEGIES	CASCADE	HOMFELDT, STEVEN	9/1/2016	6	\$53.40	
	CERTIFICATED	ED REFORM STRATEGIES	CASCADE	HOWE, ERIC	9/1/2016	4	\$47.36	
	CERTIFICATED	ED REFORM STRATEGIES	MT. BAKER	HUBBELL, CAROLYN	9/1/2016	4	\$52.36	
	CERTIFICATED	ED REFORM STRATEGIES	MT. BAKER	JACOBS, BRUCE	9/1/2016	4	\$53.40	
	CERTIFICATED	ED REFORM STRATEGIES	MT. BAKER	KEMP, JAMES	9/1/2016	6	\$53.40	
	CERTIFICATED	ED REFORM STRATEGIES	MT. BAKER	KING, MATTHEW	9/1/2016	6	\$53.40	
	CERTIFICATED	ED REFORM STRATEGIES	RAINIER	KLINE, JOAN	9/1/2016	9	\$29.45	
	CERTIFICATED	ED REFORM STRATEGIES	MT. BAKER	KOENIG, SALLY	9/1/2016	4	\$43.93	
	CERTIFICATED	ED REFORM STRATEGIES	OLYMPIC	LEMKE, MARTINA	9/1/2016	6	\$30.69	
	CERTIFICATED	ED REFORM STRATEGIES	RAINIER	LIGHT, ROBIN	9/1/2016	6	\$48.01	
	CERTIFICATED	ED REFORM STRATEGIES	MT. BAKER	LINDGREN, SHARON	9/1/2016	6	\$48.01	
	CERTIFICATED	ED REFORM STRATEGIES	RAINIER	LUDWIGSON, CHRISTINE	9/1/2016	6	\$50.37	
	CERTIFICATED	ED REFORM STRATEGIES	CASCADE	LUDWIGSON, MATHEW	9/1/2016	6	\$38.14	
	CERTIFICATED	ED REFORM STRATEGIES	CASCADE	LUTZ, SUSIE	9/1/2016	6	\$29.08	
	CERTIFICATED	ED REFORM STRATEGIES	OLYMPIC	MASON, JERI	9/1/2016	6	\$48.01	
	CERTIFICATED	ED REFORM STRATEGIES	AUBURN HIGH	MAUCOTEL, JEANEE	9/1/2016	6	\$29.86	
	CERTIFICATED	ED REFORM STRATEGIES	CASCADE	MCNEESE, DANIEL	9/1/2016	6	\$43.27	
	CERTIFICATED	ED REFORM STRATEGIES	OLYMPIC	MEINHART, DORIN	9/1/2016	4	\$48.01	
	CERTIFICATED	ED REFORM STRATEGIES	OLYMPIC	MILLICAN, KARRI	9/1/2016	6	\$53.40	
	CERTIFICATED	ED REFORM STRATEGIES	RAINIER	MORGAN, JULIE	9/1/2016	6	\$48.01	
	CERTIFICATED	ED REFORM STRATEGIES	OLYMPIC	MUXEN, MATTHEW	9/1/2016	6	\$53.40	
	CERTIFICATED	ED REFORM STRATEGIES	OLYMPIC	NEWMAN, MELISSA	9/1/2016	6	\$29.08	
	CERTIFICATED	ED REFORM STRATEGIES	CASCADE	OLSON, KEVIN PATRICK	9/1/2016	6	\$36.69	
	CERTIFICATED	ED REFORM STRATEGIES	MT. BAKER	PAUSTIAN, R. KEVIN	9/1/2016	6	\$53.40	
	CERTIFICATED	ED REFORM STRATEGIES	RAINIER	PRATHER, PAUL	9/1/2016	6	\$53.40	
	CERTIFICATED	ED REFORM STRATEGIES	RAINIER	PRIDEMORE, CINDY	9/1/2016	4	\$40.15	
	CERTIFICATED	ED REFORM STRATEGIES	RAINIER	RASMUSSEN, DAWN	9/1/2016	6	\$45.88	
	CERTIFICATED	ED REFORM STRATEGIES	CASCADE	RAY, KEITH	9/1/2016	6	\$53.40	
	CERTIFICATED	ED REFORM STRATEGIES	CASCADE	REAVIS, TIMOTHY	9/1/2016	6	\$29.86	
	CERTIFICATED	ED REFORM STRATEGIES	OLYMPIC	REICHERTER, TROY	9/1/2016	6	\$49.51	
	CERTIFICATED	ED REFORM STRATEGIES	RAINIER	REMPFER, SONYA	9/1/2016	6	\$48.01	
	CERTIFICATED	ED REFORM STRATEGIES	OLYMPIC	ROGERS, LAURA	9/1/2016	6	\$43.93	
	CERTIFICATED	ED REFORM STRATEGIES	CASCADE	SAMPSON, FREDERICK	9/1/2016	6	\$32.28	
	CERTIFICATED	ED REFORM STRATEGIES	CASCADE	SARRA IV, NICHOLAS	9/1/2016	4	\$34.35	
	CERTIFICATED	ED REFORM STRATEGIES	CASCADE	SERAME, LORI	9/1/2016	6	\$53.40	
	CERTIFICATED	ED REFORM STRATEGIES	OLYMPIC	SHERIN, TRACY	9/1/2016	6	\$53.40	
	CERTIFICATED	ED REFORM STRATEGIES	OLYMPIC	STROBEL, KIMBERLY	9/1/2016	6	\$53.40	
	CERTIFICATED	ED REFORM STRATEGIES	RAINIER	SULLIVAN, MARCUS	9/1/2016	6	\$35.44	
	CERTIFICATED	ED REFORM STRATEGIES	MT. BAKER	SWANSON, PENNI	9/1/2016	4	\$53.40	
	CERTIFICATED	ED REFORM STRATEGIES	OLYMPIC	TAYLOR, RICHARD	9/1/2016	6	\$48.04	
	CERTIFICATED	ED REFORM STRATEGIES	CASCADE	THOMSEN, CHRISTINA	9/1/2016	4	\$53.40	
	CERTIFICATED	ED REFORM STRATEGIES	MT. BAKER	THORINGTON, CHRISTINE	9/1/2016	6	\$53.40	
	CERTIFICATED	ED REFORM STRATEGIES	RAINIER	TURNER, HAYLEY	9/1/2016	9	\$28.33	
	CERTIFICATED	ED REFORM STRATEGIES	OLYMPIC	WAY, PHILLIP	9/1/2016	6	\$51.03	
	CERTIFICATED	ED REFORM STRATEGIES	MT. BAKER	WELLS, NICOLE	9/1/2016	4	\$35.85	
	CERTIFICATED	ED REFORM STRATEGIES	MT. BAKER	WHARTON, MELINDA	9/1/2016	6	\$53.40	
	CERTIFICATED	ED REFORM STRATEGIES	OLYMPIC	WILLSON, JENNIFER	9/1/2016	4	\$53.40	
	CERTIFICATED	ED REFORM STRATEGIES	RAINIER	WILSON, CHRISTINE	9/1/2016	4	\$52.36	
	CERTIFICATED	ED REFORM STRATEGIES	RAINIER	WILSON, CHRISTINE	9/1/2016	6	\$52.36	
	CERTIFICATED	ED REFORM STRATEGIES	OLYMPIC	WILSON, DAVID	9/1/2016	4	\$29.08	
	CERTIFICATED	ED REFORM STRATEGIES	MT. BAKER	WINTER, SUSAN	9/1/2016	4	\$48.01	
	CERTIFICATED	INST SPEC CO-TEACHING SUPP	OLYMPIC	HOGENSON, LAURA	9/7/2016	20	\$53.40	
	CERTIFICATED	LOGISTICAL SUPPORT	AUBURN MOUNTAINVIEW	STEPHENSON, KATHRYN	11/11/2016	9	\$28.33	
	CERTIFICATED	MS CONTENT TEAM--MATH	OLYMPIC	BUTLER, MARK	9/7/2016	6	\$48.01	
	CERTIFICATED	MS CONTENT TEAM--MATH	MT. BAKER	CALKINS, DEBORAH	9/7/2016	6	\$46.63	

CERTIFICATED	MS CONTENT TEAM--MATH	MT. BAKER	CARTER, JEREMIAH	9/7/2016	6	\$45.97
CERTIFICATED	MS CONTENT TEAM--MATH	CASCADE	CHEW, CHARLES	9/7/2016	6	\$51.13
CERTIFICATED	MS CONTENT TEAM--MATH	OLYMPIC	COOPER, PAUL	9/7/2016	6	\$53.40
CERTIFICATED	MS CONTENT TEAM--MATH	MT. BAKER	DETWILER, KIMBERLY	9/7/2016	6	\$53.40
CERTIFICATED	MS CONTENT TEAM--MATH	CASCADE	DOW, DAVID	9/7/2016	6	\$44.47
CERTIFICATED	MS CONTENT TEAM--MATH	CASCADE	FONDA, PAULETTE	9/7/2016	6	\$40.38
CERTIFICATED	MS CONTENT TEAM--MATH	OLYMPIC	GARY, ANDREW	9/7/2016	6	\$36.92
CERTIFICATED	MS CONTENT TEAM--MATH	OLYMPIC	GUEST, JOANNA	9/7/2016	6	\$35.44
CERTIFICATED	MS CONTENT TEAM--MATH	RAINIER	GULLARD, CHRISTINA	9/7/2016	6	\$52.36
CERTIFICATED	MS CONTENT TEAM--MATH	OLYMPIC	HOGENSON, LAURA	9/7/2016	6	\$53.40
CERTIFICATED	MS CONTENT TEAM--MATH	CASCADE	HOMFELDT, JENNY	9/7/2016	6	\$53.40
CERTIFICATED	MS CONTENT TEAM--MATH	MT. BAKER	KEMP, JENNIFER	9/7/2016	6	\$53.40
CERTIFICATED	MS CONTENT TEAM--MATH	MT. BAKER	KNIGHTON, DAVID	9/7/2016	6	\$52.36
CERTIFICATED	MS CONTENT TEAM--MATH	RAINIER	LASHER, TRACY	9/7/2016	6	\$51.03
CERTIFICATED	MS CONTENT TEAM--MATH	RAINIER	LEWIS, BRENDA	9/7/2016	6	\$53.40
CERTIFICATED	MS CONTENT TEAM--MATH	MT. BAKER	LUBASH, DENNY	9/7/2016	6	\$53.40
CERTIFICATED	MS CONTENT TEAM--MATH	RAINIER	LUONG, JACOB	9/7/2016	6	\$53.40
CERTIFICATED	MS CONTENT TEAM--MATH	MT. BAKER	MARCOTTE, REBECCA	9/7/2016	6	\$53.40
CERTIFICATED	MS CONTENT TEAM--MATH	OLYMPIC	MCINROY, JAMES	9/7/2016	6	\$28.33
CERTIFICATED	MS CONTENT TEAM--MATH	MT. BAKER	MILLANG, SUSAN	9/7/2016	6	\$53.40
CERTIFICATED	MS CONTENT TEAM--MATH	OLYMPIC	PRICE, CHRISTY	9/7/2016	6	\$42.63
CERTIFICATED	MS CONTENT TEAM--MATH	CASCADE	PULLEN, KATERINE	9/7/2016	6	\$28.72
CERTIFICATED	MS CONTENT TEAM--MATH	RAINIER	ROCK, MICHELE	9/7/2016	6	\$43.07
CERTIFICATED	MS CONTENT TEAM--MATH	CASCADE	ROTTER, DANIEL	9/7/2016	6	\$48.01
CERTIFICATED	MS CONTENT TEAM--MATH	CASCADE	TAYLOR, QUYNH	9/7/2016	6	\$46.63
CERTIFICATED	MS CONTENT TEAM--MATH	RAINIER	THOMAS, CHARLES	9/7/2016	6	\$53.40
CERTIFICATED	MS CONTENT TEAM--MATH	MT. BAKER	TOY, DIXIE	9/7/2016	6	\$53.40
CERTIFICATED	MS CONTENT TEAM--MATH	RAINIER	WOODY, JOHN	9/7/2016	6	\$19.43
CERTIFICATED	MS CONTENT TEAM--MATH	OLYMPIC	ZUCATI, NICHOLAS	9/7/2016	6	\$31.57
CERTIFICATED	MS CONTENT TEAM-SCIENCE	CASCADE	AGNEW, CORRIE	9/7/2016	6	\$34.04
CERTIFICATED	MS CONTENT TEAM-SCIENCE	RAINIER	ALLISON, DEBORAH	9/7/2016	6	\$53.40
CERTIFICATED	MS CONTENT TEAM-SCIENCE	RAINIER	ARMBRUSTER, SUSAN	9/7/2016	6	\$48.01
CERTIFICATED	MS CONTENT TEAM-SCIENCE	MT. BAKER	BUHR, SUSAN	9/7/2016	6	\$46.63
CERTIFICATED	MS CONTENT TEAM-SCIENCE	MT. BAKER	DAVIS, MARGERY	9/7/2016	6	\$36.24
CERTIFICATED	MS CONTENT TEAM-SCIENCE	RAINIER	DIEFENDORF, DANIEL	9/7/2016	6	\$48.01
CERTIFICATED	MS CONTENT TEAM-SCIENCE	OLYMPIC	ENGLANDER, BRANDY	9/7/2016	6	\$46.63
CERTIFICATED	MS CONTENT TEAM-SCIENCE	OLYMPIC	GREENWOOD, MICHELLE	9/7/2016	6	\$30.59
CERTIFICATED	MS CONTENT TEAM-SCIENCE	CASCADE	KILLETT, CASEY	9/7/2016	6	\$45.26
CERTIFICATED	MS CONTENT TEAM-SCIENCE	CASCADE	KINKHEAD, JESSE	9/7/2016	6	\$32.87
CERTIFICATED	MS CONTENT TEAM-SCIENCE	MT. BAKER	LACY, TAYLOR	9/7/2016	6	\$28.72
CERTIFICATED	MS CONTENT TEAM-SCIENCE	OLYMPIC	LENIHAN, LAINE	9/7/2016	6	\$53.40
CERTIFICATED	MS CONTENT TEAM-SCIENCE	RAINIER	MCGUFFIN, JAY	9/7/2016	6	\$46.63
CERTIFICATED	MS CONTENT TEAM-SCIENCE	OLYMPIC	MCINROY, JAMES	9/7/2016	6	\$28.33
CERTIFICATED	MS CONTENT TEAM-SCIENCE	CASCADE	MENTINK, JUSTIN	9/7/2016	6	\$48.06
CERTIFICATED	MS CONTENT TEAM-SCIENCE	MT. BAKER	NELSON, SHARI	9/7/2016	6	\$39.11
CERTIFICATED	MS CONTENT TEAM-SCIENCE	OLYMPIC	NOMURA, DANIEL	9/7/2016	6	\$53.40
CERTIFICATED	MS CONTENT TEAM-SCIENCE	RAINIER	OLSON, THOMAS	9/7/2016	6	\$29.86
CERTIFICATED	MS CONTENT TEAM-SCIENCE	CASCADE	RESTER, JULI	9/7/2016	6	\$47.36
CERTIFICATED	MS CONTENT TEAM-SCIENCE	MT. BAKER	ROGERS, STACEY	9/7/2016	6	\$48.01
CERTIFICATED	MS CONTENT TEAM-SCIENCE	MT. BAKER	ROOT, MICALA	9/7/2016	6	\$53.40
CERTIFICATED	MS CONTENT TEAM-SCIENCE	CASCADE	ROSE, KELSEY	9/7/2016	6	\$28.72
CERTIFICATED	MS CONTENT TEAM-SCIENCE	RAINIER	TODD, KRISTIN	9/7/2016	6	\$43.07
CERTIFICATED	SOCIAL STUDIES HHM PREVIEW	MT. BAKER	LINDGREN, SHARON	10/31/2016	6	\$48.01
CERTIFICATED	SUMMER SCHOOL 2016	EVERGREEN HTS	DRAKE, MICHELLE	9/1/2016	16	\$35.24
CERTIFICATED	TEACHER LEADERSHIP ACAC	AUBURN MOUNTAINVIEW	AMMONS, TORI	10/31/2016	5	\$40.97
CERTIFICATED	TEACHER LEADERSHIP ACAC	LAKELAND HILLS	PETERS, TRINA	10/31/2016	5	\$48.64
CERTIFICATED	TEACHER LEADERSHIP ACAC	OLYMPIC	ROGERS, LAURA	10/31/2016	5	\$43.93
CERTIFICATED	TEACHER LEADERSHIP ACAC	AUBURN MOUNTAINVIEW	WOOD, RICHARD	10/31/2016	5	\$33.37
CERTIFICATED	WAKIDS TRAINING	LAKELAND HILLS	BONHAM, KELSEY	7/5/2016		STIPEND \$480
CERTIFICATED	WAKIDS TRAINING	LAKELAND HILLS	BROWN, KELLY	7/5/2016		STIPEND \$480
CERTIFICATED	WAKIDS TRAINING	PIONEER	BURGER, SUSAN	9/14/2016		STIPEND \$120
CERTIFICATED	WAKIDS TRAINING	WASHINGTON	FABYANCHUK, YEKATERINE	9/21/2016		STIPEND \$120
CERTIFICATED	WAKIDS TRAINING	PIONEER	FREDERICKSON, DEANN	9/14/2016		STIPEND \$120
CERTIFICATED	WAKIDS TRAINING	LAKELAND HILLS	LYNCH, SARAH	7/25/2016		STIPEND \$480
CERTIFICATED	WAKIDS TRAINING	LAKELAND HILLS	MATTISON, SARAH	7/25/2016		STIPEND \$480
CERTIFICATED	WAKIDS TRAINING	LAKELAND HILLS	MCKEOUGH, KIMBERLY	7/5/2016		STIPEND \$480
CERTIFICATED	WAKIDS TRAINING	CHINOOK	MICHALEK, TAMMY	7/20/2016		STIPEND \$480
CERTIFICATED	WAKIDS TRAINING	DICK SCOBEE	MUTCH, SYDNEY	7/20/2016		STIPEND \$480
CERTIFICATED	WAKIDS TRAINING	GILDO REY	O'GRADY, KAYLA	9/21/2016		STIPEND \$120
CERTIFICATED	WAKIDS TRAINING	WASHINGTON	PETERSON, STEPHANIE	9/21/2016		STIPEND \$120
CERTIFICATED	WAKIDS TRAINING	LAKELAND HILLS	POTTER, CHRISTY	7/5/2016		STIPEND \$480

Leave

New Hire

Resignation

PERSONNEL REPORT - CLASSIFIED

Curriculum-Noncurriculum

CLASSIFIED	EXTRA HOURS - RIGHT RESPONSE RECERTIFICATION	ADMIN	ALLAN, JOYCE	11/7/2016	7	\$18.79
CLASSIFIED	EXTRA HOURS - RIGHT RESPONSE RECERTIFICATION	ADMIN	ANDERSON, SHERYL	10/25/2016	7	\$18.62
CLASSIFIED	EXTRA HOURS - RIGHT RESPONSE RECERTIFICATION	ADMIN	ANTONELLI, YENNY	10/25/2016	7	\$18.43
CLASSIFIED	EXTRA HOURS - RIGHT RESPONSE RECERTIFICATION	ADMIN	CASH, ANGELA	11/7/2016	7	\$18.79
CLASSIFIED	EXTRA HOURS - RIGHT RESPONSE RECERTIFICATION	ADMIN	CLARK, BRITTNEY	11/7/2016	7	\$18.43
CLASSIFIED	EXTRA HOURS - RIGHT RESPONSE RECERTIFICATION	ADMIN	DAVIS, VICKIE	10/25/2016	7	\$18.43
CLASSIFIED	EXTRA HOURS - RIGHT RESPONSE RECERTIFICATION	ADMIN	DEARINGER, DIRK	10/25/2016	7	\$18.43
CLASSIFIED	EXTRA HOURS - RIGHT RESPONSE RECERTIFICATION	ADMIN	FARR, BROOKS	10/25/2016	7	\$18.79
CLASSIFIED	EXTRA HOURS - RIGHT RESPONSE RECERTIFICATION	ADMIN	HOLMBERG, PAULA	10/25/2016	7	\$18.62
CLASSIFIED	EXTRA HOURS - RIGHT RESPONSE RECERTIFICATION	ADMIN	MALLORY, SANDRA	10/25/2016	7	\$18.79
CLASSIFIED	EXTRA HOURS - RIGHT RESPONSE RECERTIFICATION	ADMIN	NAKAYA, CINDY	11/7/2016	7	\$18.62
CLASSIFIED	EXTRA HOURS - RIGHT RESPONSE RECERTIFICATION	ADMIN	PAYSENO, JENNY	11/7/2016	7	\$18.62
CLASSIFIED	EXTRA HOURS - RIGHT RESPONSE RECERTIFICATION	ADMIN	SALADIS, JENNIFER	11/7/2016	7	\$18.79
CLASSIFIED	EXTRA HOURS - RIGHT RESPONSE RECERTIFICATION	ADMIN	TATLOR, SALENA	11/7/2016	7	\$18.09
CLASSIFIED	POST SEASON PAY- ATHLETIC TRAINER	AUBURN MOUNTAINVIEW	OSTRANDER, TIFFANY	10/24/2016	STIPEND -	\$1329
CLASSIFIED	POST SEASON PAY- BOYS CROSS COUNTRY	AUBURN HIGH SCHOOL	ISHAM, GREGORY	10/17/2016	STIPEND -	\$886
CLASSIFIED	POST SEASON PAY- BOYS CROSS COUNTRY	AUBURN RIVERSIDE	SUMNER, GEORGE	10/17/2016	STIPEND -	\$1329
CLASSIFIED	POST SEASON PAY- BOYS CROSS COUNTRY	AUBURN MOUNTAINVIEW	TUBBS, TIMOTHY	10/17/2016	STIPEND -	\$886
CLASSIFIED	POST SEASON PAY- BOYS CROSS COUNTRY	AUBURN RIVERSIDE	WRIGHT, TIMOTHY	10/17/2016	STIPEND -	\$1,029
CLASSIFIED	POST SEASON PAY- BOYS FOOTBALL	AUBURN RIVERSIDE	ATAFUA, VIKI	10/31/2016	STIPEND -	\$343
CLASSIFIED	POST SEASON PAY- BOYS FOOTBALL	AUBURN RIVERSIDE	CATALAN, TITUS	10/31/2016	STIPEND -	\$343
CLASSIFIED	POST SEASON PAY- BOYS FOOTBALL	AUBURN MOUNTAINVIEW	COLBURN, KENNETH	10/31/2016	STIPEND -	\$343
CLASSIFIED	POST SEASON PAY- BOYS FOOTBALL	AUBURN RIVERSIDE	CUBIT, RALPH	10/31/2016	STIPEND -	\$343
CLASSIFIED	POST SEASON PAY- BOYS FOOTBALL	AUBURN RIVERSIDE	EMMONS, RODNEY	10/31/2016	STIPEND -	\$343
CLASSIFIED	POST SEASON PAY- BOYS FOOTBALL	AUBURN MOUNTAINVIEW	GERVAIS, JARED	10/31/2016	STIPEND -	\$443
CLASSIFIED	POST SEASON PAY- BOYS FOOTBALL	AUBURN MOUNTAINVIEW	GROUT, BRIAN	10/31/2016	STIPEND -	\$343
CLASSIFIED	POST SEASON PAY- BOYS FOOTBALL	AUBURN MOUNTAINVIEW	HUNT, JEREMY	10/31/2016	STIPEND -	\$343
CLASSIFIED	POST SEASON PAY- BOYS FOOTBALL	AUBURN RIVERSIDE	LOCKE-BERRY, MICHAEL	10/31/2016	STIPEND -	\$343
CLASSIFIED	POST SEASON PAY- BOYS FOOTBALL	AUBURN MOUNTAINVIEW	NISHIMOTO, KEVIN	10/31/2016	STIPEND -	\$343
CLASSIFIED	POST SEASON PAY- BOYS FOOTBALL	AUBURN RIVERSIDE	PURCELL, LOTOVALE	10/31/2016	STIPEND -	\$343
CLASSIFIED	POST SEASON PAY- BOYS FOOTBALL	AUBURN MOUNTAINVIEW	RODSETH, KENT	10/31/2016	STIPEND -	\$343
CLASSIFIED	POST SEASON PAY- BOYS FOOTBALL	AUBURN RIVERSIDE	TERRY, KEITH	10/31/2016	STIPEND -	\$343
CLASSIFIED	POST SEASON PAY- BOYS FOOTBALL	AUBURN RIVERSIDE	THOMAS, BRYANT	10/31/2016	STIPEND -	\$443
CLASSIFIED	POST SEASON PAY- BOYS FOOTBALL	AUBURN MOUNTAINVIEW	WOOD, RICHARD	10/31/2016	STIPEND -	\$343
CLASSIFIED	POST SEASON PAY- BOYS FOOTBALL	AUBURN RIVERSIDE	YZAGUIRRE, MARCUS	10/31/2016	STIPEND -	\$343
CLASSIFIED	POST SEASON PAY- BOYS GOLF	AUBURN MOUNTAINVIEW	DAVIDSON, CARY	10/17/2016	STIPEND -	\$443
CLASSIFIED	POST SEASON PAY- BOYS GOLF	AUBURN RIVERSIDE	HUYLAR, MICHAEL	10/17/2016	STIPEND -	\$443
CLASSIFIED	POST SEASON PAY- BOYS GOLF	AUBURN HIGH SCHOOL	SAGLE, JEREMY	10/17/2016	STIPEND -	\$443
CLASSIFIED	POST SEASON PAY- BOYS TENNIS	AUBURN RIVERSIDE	DIEHL, BRUCE	10/10/2016	STIPEND -	\$1329
CLASSIFIED	POST SEASON PAY- BOYS TENNIS	AUBURN MOUNTAINVIEW	HEDGER, DUSTIN	10/10/2016	STIPEND -	\$1329
CLASSIFIED	POST SEASON PAY- BOYS TENNIS	AUBURN MOUNTAINVIEW	LORRIAN, KAY	10/10/2016	STIPEND -	\$343
CLASSIFIED	POST SEASON PAY- BOYS TENNIS	AUBURN RIVERSIDE	PARSONS, THOMAS	10/10/2016	STIPEND -	\$686
CLASSIFIED	POST SEASON PAY- BOYS TENNIS	AUBURN HIGH SCHOOL	SMETHERAM, PHILIP	10/10/2016	STIPEND -	\$1329
CLASSIFIED	POST SEASON PAY- BOYS WATER POLO	AUBURN MOUNTAINVIEW	CREED, STEPHEN	10/31/2016	STIPEND -	\$343
CLASSIFIED	POST SEASON PAY- BOYS WATER POLO	AUBURN HIGH SCHOOL	ISOM, JAMES	10/31/2016	STIPEND -	\$443
CLASSIFIED	POST SEASON PAY- BOYS WATER POLO	AUBURN MOUNTAINVIEW	PRITCHARD, JUSTIN	10/31/2016	STIPEND -	\$443
CLASSIFIED	POST SEASON PAY- BOYS WATER POLO	AUBURN RIVERSIDE	RIDGE, KYLE	10/31/2016	STIPEND -	\$343
CLASSIFIED	POST SEASON PAY- BOYS WATER POLO	AUBURN RIVERSIDE	VAN EATON, MICHAEL	10/31/2016	STIPEND -	\$443
CLASSIFIED	POST SEASON PAY- GIRLS CROSS COUNTRY	AUBURN RIVERSIDE	HALFORD, SANDRA	10/17/2016	STIPEND -	\$686
CLASSIFIED	POST SEASON PAY- GIRLS CROSS COUNTRY	AUBURN MOUNTAINVIEW	RAMBOW, JULIANNE	10/17/2016	STIPEND -	\$443
CLASSIFIED	POST SEASON PAY- GIRLS CROSS COUNTRY	AUBURN RIVERSIDE	SWENDDAL WHITE, KAISA	10/17/2016	STIPEND -	\$1329
CLASSIFIED	POST SEASON PAY- GIRLS CROSS COUNTRY	AUBURN HIGH SCHOOL	WAY, LACEY	10/17/2016	STIPEND -	\$886
CLASSIFIED	POST SEASON PAY- GIRLS GOLF	AUBURN MOUNTAINVIEW	CALHOUN, STEVEN	10/17/2016	STIPEND -	\$443
CLASSIFIED	POST SEASON PAY- GIRLS GOLF	AUBURN RIVERSIDE	CONANT, CRYSTAL	10/17/2016	STIPEND -	\$443
CLASSIFIED	POST SEASON PAY- GIRLS GOLF	AUBURN HIGH SCHOOL	MENTINK, JUSTIN	10/17/2016	STIPEND -	\$443
CLASSIFIED	POST SEASON PAY- GIRLS SOCCER	AUBURN MOUNTAINVIEW	BECERRA-OROZCO, FERNANDO	10/31/2016	STIPEND -	\$343
CLASSIFIED	POST SEASON PAY- GIRLS SOCCER	AUBURN RIVERSIDE	KINNEY, NICHOLE	10/31/2016	STIPEND -	\$343
CLASSIFIED	POST SEASON PAY- GIRLS SOCCER	AUBURN RIVERSIDE	LEWIS, PAUL	10/31/2016	STIPEND -	\$443
CLASSIFIED	POST SEASON PAY- GIRLS SOCCER	AUBURN MOUNTAINVIEW	WEST, JOSPEH	10/31/2016	STIPEND -	\$443
CLASSIFIED	POST SEASON PAY- GIRLS SWIMMING/DIVING	AUBURN MOUNTAINVIEW	EASLEY, DAVID	10/17/2016	STIPEND -	\$686
CLASSIFIED	POST SEASON PAY- GIRLS SWIMMING/DIVING	AUBURN MOUNTAINVIEW	GRUBB, REGINA	10/17/2016	STIPEND -	\$686
CLASSIFIED	POST SEASON PAY- GIRLS SWIMMING/DIVING	AUBURN HIGH SCHOOL	HENRY, KATIE	10/17/2016	STIPEND -	\$886
CLASSIFIED	POST SEASON PAY- GIRLS SWIMMING/DIVING	AUBURN HIGH SCHOOL	HERRERA, MICHAELA	10/17/2016	STIPEND -	\$343
CLASSIFIED	POST SEASON PAY- GIRLS SWIMMING/DIVING	AUBURN RIVERSIDE	MALONE, CORIN	10/17/2016	STIPEND -	\$343
CLASSIFIED	POST SEASON PAY- GIRLS SWIMMING/DIVING	AUBURN RIVERSIDE	MCKEEHAN, PATRICK	10/17/2016	STIPEND -	\$886
CLASSIFIED	POST SEASON PAY- GIRLS SWIMMING/DIVING	AUBURN HIGH SCHOOL	POTTERF, KELSI	10/17/2016	STIPEND -	\$886
CLASSIFIED	POST SEASON PAY- GIRLS SWIMMING/DIVING	AUBURN MOUNTAINVIEW	ULRICH, PAULINA	10/17/2016	STIPEND -	\$1329
CLASSIFIED	POST SEASON PAY- GIRLS VOLLEYBALL	AUBURN RIVERSIDE	BOYD, JASON	11/2/2016	STIPEND -	\$514.50
CLASSIFIED	POST SEASON PAY- GIRLS VOLLEYBALL	AUBURN HIGH SCHOOL	DAVIS, SHELLEY	10/24/2016	STIPEND -	\$886
CLASSIFIED	POST SEASON PAY- GIRLS VOLLEYBALL	AUBURN RIVERSIDE	EDMONDS, ANASTAZIA	10/17/2016	STIPEND -	\$514.50
CLASSIFIED	POST SEASON PAY- GIRLS VOLLEYBALL	AUBURN HIGH SCHOOL	KOKE, AUDRA	10/24/2016	STIPEND -	\$686
CLASSIFIED	POST SEASON PAY- GIRLS VOLLEYBALL	AUBURN RIVERSIDE	LEVERENZ, CHRISTINE	10/17/2016	STIPEND -	\$1329
CLASSIFIED	POST SEASON PAY- GIRLS VOLLEYBALL	AUBURN MOUNTAINVIEW	MCDONALD, TELIA	10/24/2016	STIPEND -	\$1329
CLASSIFIED	POST SEASON PAY- GIRLS VOLLEYBALL	AUBURN MOUNTAINVIEW	MCGRAW, NICHOLETTE	10/31/2016	STIPEND -	\$343
CLASSIFIED	POST SEASON PAY- GIRLS VOLLEYBALL	AUBURN MOUNTAINVIEW	SCHROEDER, COURTNEY	10/24/2016	STIPEND -	\$343
CLASSIFIED	POST SEASON PAY- GIRLS VOLLEYBALL	AUBURN MOUNTAINVIEW	SWEENEY, DEVAN	11/7/2016	STIPEND -	\$343

New Hire

CLASSIFIED	C-CUSTODIAN A	CASCADE	BOSCH, JIM	11/18/2016	4	\$20.14	QUALIFIED APPLICANT
CLASSIFIED	P-CLASS SIZE/P-PLAYGROUND/P-RECESS	ILALKO	GREEN, AIMEE	11/15/2016	4.5	\$16.33	QUALIFIED APPLICANT
CLASSIFIED	P-SPEC ED CLASS SIZE	GILDO REY	TORRES, MIRIAM	11/14/2016	3	\$18.09	QUALIFIED APPLICANT
CLASSIFIED	P-SPEC ED SPEC KIDS	AUBURN HIGH	DANIEL, DEE DEE	11/10/2016	5	\$18.09	QUALIFIED APPLICANT
CLASSIFIED	P-SPEC ED SPEC KIDS	HAZELWOOD	MACKENZIE, GRAHAM	11/17/2016	6.5	\$18.09	QUALIFIED APPLICANT

FINANCE

1. Vouchers

Vouchers will be presented.

Recommendation: That these vouchers be signed.

2. Resolution No. 1228--A Resolution to Recertify the 2017 General Fund Levy from \$40,472,263 to \$40,700,000 and to Recertify the 2017 Debt Service Fund Levy from \$16,337,000 to \$28,000,000

Attached is a copy of Resolution No.1228 recertifying the 2017 General Fund Levy from \$40,472,263 to \$40,700,000 and to recertify the 2017 Debt Service Fund Levy from \$16,337,000 to \$28,000,000. The final 2017 calculations have been released from the Office of the Superintendent of Public Instruction increasing the allowable General Fund Levy by \$227,737 to \$40,700,000.

Recommendation: That Resolution No.1228 be adopted.

3. Financial Statements

Financial statements for the month of October, 2016, are included in the board background material.

The following vouchers, as audited and certified by the Auditing Officer as required by RCW 42.24.080, and those expense reimbursement claims certified as required by RCW 42.24.090, are approved for payment. Those payments have been recorded on this listing which has been made available to the board.

As of November 28, 2016, the board, by a _____ vote, approves payments, totaling \$529,687.89. The payments are further identified in this document.

Total by Payment Type for Cash Account, US Bank of Washington:
Warrant Numbers 434796 through 434975, totaling \$529,687.89

Secretary _____	Board Member _____
Board Member _____	Board Member _____
Board Member _____	Board Member _____

Check Nbr	Vendor Name	Check Date	Check Amount
434796	*ESTATE OF JULIE CAMPBELL	11/28/2016	2,666.65
434797	*MERCHANTS CREDIT CORP	11/28/2016	804.37
434798	*MERCHANTS CREDIT CORP	11/28/2016	1,089.17
434799	AGRISHOP INC	11/28/2016	149.02
434800	ALPINE PRODUCTS INC	11/28/2016	237.89
434801	Vendor Continued Check	11/28/2016	0.00
434802	AMAZON CREDIT DEPT	11/28/2016	730.50
434803	AMERICAN ACADEMY ~ GRADUATION	11/28/2016	9,849.61
434804	AMERICAN FLOORS & BLINDS	11/28/2016	605.04
434805	AMERICAN RED CROSS	11/28/2016	60.80
434806	ARAMARK UNIFORM SERVICES	11/28/2016	130.03
434807	AUBURN MOUNTAINVIEW H S	11/28/2016	3,500.00
434808	AUBURN YOUTH RESOURCES INC	11/28/2016	7,965.00
434809	BAIRD, STEVEN L	11/28/2016	4.00
434810	BLUMENTHAL UNIFORMS & EQUIPMEN	11/28/2016	630.55
434811	Vendor Continued Check	11/28/2016	0.00
434812	BRIDGESTONE AMERICAS TIRE OPER	11/28/2016	1,258.96

Check Nbr	Vendor Name	Check Date	Check Amount
434813	BRYSON SALES & SERVICE	11/28/2016	738.76
434814	CASCADE BEAUTY COLLEGE	11/28/2016	1,960.62
434815	CENTURY LINK	11/28/2016	9,370.92
434816	CENTURY LINK BUSINESS SERVICES	11/28/2016	712.39
434817	CENTURY LINK	11/28/2016	38,555.62
434818	CHILDRENS THERAPY CENTER	11/28/2016	21,888.00
434819	COASTWIDE LABORATORIES	11/28/2016	1,017.98
434820	COMBATIVE SOLUTIONS LLC	11/28/2016	500.00
434821	COMCAST	11/28/2016	55.62
434822	COMPREHENSIVE MENTAL HEALTH CE	11/28/2016	567.50
434823	CONSOLIDATED ELECTRICAL DIST I	11/28/2016	536.55
434824	CUMMINS INC	11/28/2016	1,980.70
434825	DELUXE	11/28/2016	4,701.78
434826	DEPT OF ENTERPRISE SERVICES	11/28/2016	150.00
434827	DEPT OF LABOR & INDUSTRIES	11/28/2016	74.50
434828	DRUG FREE BUSINESS	11/28/2016	168.00
434829	EDUCATIONAL TESTING SERVICE IN	11/28/2016	550.00
434830	EK BEVERAGE COMPANY	11/28/2016	661.00
434831	ELECTROCOM	11/28/2016	591.30
434832	EMPLOYMENT SECURITY DEPT QTRLY	11/28/2016	16,039.42
434833	EQUIPMENT SALES COMPANY	11/28/2016	558.45
434834	HOMECARE PRODUCTS INC	11/28/2016	7,669.33
434835	Vendor Continued Check	11/28/2016	0.00
434836	Vendor Continued Check	11/28/2016	0.00
434837	Vendor Continued Check	11/28/2016	0.00

Check Nbr	Vendor Name	Check Date	Check Amount
434838	FERGUSON ENTERPRISES INC #3007	11/28/2016	4,532.23
434839	FESSIA, TYLER JORDAN	11/28/2016	15.00
434840	FOLLETT SCHOOL SOLUTIONS INC	11/28/2016	250.27
434841	FRONTIER CLEANERS	11/28/2016	603.62
434842	FULL COMPASS SYSTEMS LTD	11/28/2016	1,068.40
434843	GILDO REY ELEM	11/28/2016	25.00
434844	GRAINGER DEPT 810392688	11/28/2016	1,827.27
434845	GROW PUBLICATIONS	11/28/2016	34.45
434846	GUARDIAN SECURITY SYSTEMS INC	11/28/2016	1,464.00
434847	GUTIERREZ, RACHEL	11/28/2016	9.00
434848	HAMMOND ASHLEY VIOLINS	11/28/2016	1,368.75
434849	HARMER RADIO & ELECTRONICS INC	11/28/2016	2,210.53
434850	HARTNESS, ADRIANE LOUISE	11/28/2016	11,000.00
434851	HAZELWOOD ELEM	11/28/2016	9.50
434852	HD FOWLER COMPANY INC	11/28/2016	7.75
434853	HEALTH CARE AUTHORITY DIVISION	11/28/2016	2,956.71
434854	HERC RENTALS INC	11/28/2016	549.19
434855	HOWARD, ELEIZABETH L	11/28/2016	628.56
434856	INTEGRATED REGISTER SYSTEM INC	11/28/2016	495.00
434857	INTERMOUNTAIN LOCK & SECURITY	11/28/2016	272.25
434858	JOSTENS INC	11/28/2016	28.38
434859	JP MORGAN CHASE BANK	11/28/2016	1,155.26
434860	KEJU LANGUAGE CONNECTION	11/28/2016	2,025.00
434861	KENNELLY KEYS MUSIC	11/28/2016	2,849.16
434862	KING, STACY JOLENE	11/28/2016	115.00

Check Nbr	Vendor Name	Check Date	Check Amount
434863	LAMARCA, SUNNY D	11/28/2016	15.00
434864	LAWRENCE, KAREN	11/28/2016	718.20
434865	LAZOS PRIETO, JUAN	11/28/2016	16.25
434866	LOOMIS	11/28/2016	400.00
434867	LOWES HIW INC	11/28/2016	720.89
434868	LUCKOW, MARTY	11/28/2016	7.00
434869	MOTOR OIL SUPPLY INC	11/28/2016	2,750.37
434870	MUSIC IS ELEMENTARY	11/28/2016	35.00
434871	NW BATTERIES	11/28/2016	416.10
434872	NW FAMILY CHURCH	11/28/2016	770.00
434873	NW FAMILY CHURCH	11/28/2016	983.31
434874	NW HANDLING SYSTEMS INC	11/28/2016	278.24
434875	NW TEXTBOOK DEPOSITORY	11/28/2016	214.67
434876	OCCUPATIONAL HEALTH SERVICES	11/28/2016	250.00
434877	ORCA PACIFIC INC	11/28/2016	350.07
434878	OUTPATIENT PHYSICAL THERAPY &	11/28/2016	7,094.80
434879	OXFORD UNIVERSITY PRESS CORP	11/28/2016	4,216.09
434880	PATTERSON BUCHANAN FOBES & LEI	11/28/2016	6,313.10
434881	PBIS APPS	11/28/2016	291.67
434882	PEARSON EDUCATION INC	11/28/2016	1,642.87
434883	PETRO CARD	11/28/2016	41,236.64
434884	PROGRESSUS THERAPY INC	11/28/2016	14,086.37
434885	PUGET SOUND ASSN FOR PUPIL TRA	11/28/2016	60.00
434886	PUGET SOUND COACH LINES	11/28/2016	4,770.00
434887	PUGET SOUND ENERGY ELECTRIC	11/28/2016	44,817.33

Check Nbr	Vendor Name	Check Date	Check Amount
434888	Vendor Continued Check	11/28/2016	0.00
434889	PUGET SOUND ENERGY NAT GAS	11/28/2016	17,803.99
434890	REXEL INC	11/28/2016	65.60
434891	REYES, MARIA	11/28/2016	19.00
434892	RODDA PAINT CO	11/28/2016	397.73
434893	ROSE, RATINA	11/28/2016	190.84
434894	SCHETKY NW SALES INC	11/28/2016	1,001.30
434895	SEATTLE METRO SOFTBALL UMPIRES	11/28/2016	1,135.00
434896	SEA-TEMP LLC	11/28/2016	489.29
434897	SHARP BUSINESS SYSTEMS	11/28/2016	24.99
434898	SIMON, TIER E	11/28/2016	693.58
434899	SMARSH INC	11/28/2016	50.00
434900	SOCIAL STUDIES SCHOOL SERVICE	11/28/2016	906.70
434901	SOLIANI HEALTH	11/28/2016	2,010.00
434902	SPRAGUE ISRAEL GILES INC	11/28/2016	4,189.50
434903	SPRINGSHARE LLC	11/28/2016	648.00
434904	STANSELL GLASS INC	11/28/2016	787.68
434905	SUPERIOR HVAC AND ELECTRICAL	11/28/2016	670.69
434906	TACOMA PIERCE CO HEALTH DEPART	11/28/2016	400.00
434907	TACOMA SCREW PRODUCTS INC	11/28/2016	13.16
434908	TED BROWN MUSIC COMPANY	11/28/2016	576.66
434909	TELDATA SYSTEMS INC	11/28/2016	239.53
434910	TESLA ELECTRIC LLC	11/28/2016	1,362.04
434911	TESLA ELECTRIC LLC	11/28/2016	2,712.73
434912	TESLA ELECTRIC LLC	11/28/2016	130.75

Check Nbr	Vendor Name	Check Date	Check Amount
434913	THERMAL SUPPLY INC	11/28/2016	136.58
434914	TIME EQUIPMENT COMPANY	11/28/2016	86.51
434915	TOP ECHELON CONTRACTING INC	11/28/2016	3,395.33
434916	TRANE U S INC	11/28/2016	589.59
434917	TRY STAR PRODUCTIONS	11/28/2016	3,409.50
434918	UNIFIRST CORPORATION	11/28/2016	747.88
434919	VALLE, OLIVIA	11/28/2016	78.00
434920	VETERAN JOURNAL INC	11/28/2016	895.00
434921	WARNER, SARAH A	11/28/2016	16.99
434922	WARREN, ELEANOR J	11/28/2016	417.96
434923	WASH CEDAR & SUPPLY CO	11/28/2016	90.69
434924	WATER WALKERS INC	11/28/2016	10,712.39
434925	WESTERN FACILITY SUPPLY INC	11/28/2016	2,673.99
434926	WILBUR ELLIS COMPANY LLC	11/28/2016	467.79
434927	WORKFORCE COMMUNICATIONS GROUP	11/28/2016	950.00
434928	WORLD WIDE VINYL REPAIR SYSTEM	11/28/2016	107.72
434929	CDW GOVERNMENT INC	11/28/2016	1,239.55
434930	DUTTON ELECTRIC COMPANY INC	11/28/2016	20,689.24
434931	EMERSON, LEO S	11/28/2016	7,200.00
434932	GENOTHEN HOLDINGS LLC	11/28/2016	64,335.42
434933	GREENE GASAWAY ARCHITECTS PLLC	11/28/2016	3,134.25
434934	PUGET SOUND ENERGY ELECTRIC	11/28/2016	606.00
434935	XYTRONIX RESEARCH & DESIGN INC	11/28/2016	245.70
434936	AUBURN SCHOOL DIST 408 **	11/28/2016	315.00
434937	AUBURN SCHOOL DIST 408 **	11/28/2016	358.50

Check Nbr	Vendor Name	Check Date	Check Amount
434938	BELIEVE KIDS/BELEIVE PRODUCTIO	11/28/2016	3,123.30
434939	COCA COLA REFRESHMENTS USA INC	11/28/2016	911.55
434940	COSTCO	11/28/2016	1,729.13
434941	DECARTERET DESIGNS LLC	11/28/2016	227.00
434942	EK BEVERAGE COMPANY	11/28/2016	338.50
434943	ENJOY THE CITY NORTH INC	11/28/2016	762.50
434944	EXPERIENCE MUSIC PROJECT	11/28/2016	3,500.00
434945	Vendor Continued Check	11/28/2016	0.00
434946	GOSNEY MOTOR PARTS INC	11/28/2016	955.36
434947	HARLAN FAIRBANKS	11/28/2016	2,626.03
434948	IMAGE MASTERS INC	11/28/2016	283.61
434949	IMPACT PLUS FUNDRAISING	11/28/2016	4,848.00
434950	INTEGRATED REGISTER SYSTEM INC	11/28/2016	1,335.00
434951	KING COUNTY DIRECTORS ASSN	11/28/2016	49.04
434952	LAKEWOOD HIGH SCHOOL	11/28/2016	170.00
434953	MOFFITT, PATRICIA	11/28/2016	899.09
434954	NW FUNDRAISING	11/28/2016	13,185.60
434955	PACIFIC PUBLISHING COMPANY	11/28/2016	498.43
434956	PRAXAIR DISTRIBUTION INC	11/28/2016	221.68
434957	PRINCIPALS ASSOC OF NORTH PUGE	11/28/2016	550.00
434958	SANOW, DANIEL	11/28/2016	1,300.00
434959	SCHOLASTIC BOOK CLUBS INC	11/28/2016	9,319.23
434960	STAPLES BUSINESS ADVANTAGE	11/28/2016	116.26
434961	STUDENT SUPPLY COMPANY	11/28/2016	297.53
434962	UNIVERSAL ATHLETIC SERVICE INC	11/28/2016	1,342.68

Check Nbr	Vendor Name	Check Date	Check Amount
434963	VARSITY SPIRIT	11/28/2016	1,892.70
434964	VISUAL MOMENTS	11/28/2016	219.00
434965	WALMART SAMS CLUB	11/28/2016	116.13
434966	WARNER/CHAPPELL MUSIC INC	11/28/2016	240.00
434967	WATKINS, CHRISTOPHER D	11/28/2016	260.00
434968	WESTERN WASH FOOTBALL OFFICIAL	11/28/2016	7,305.75
434969	Vendor Continued Check	11/28/2016	0.00
434970	AUBURN MOUNTAINVIEW H S	11/28/2016	738.00
434971	AUBURN MOUNTAINVIEW H S	11/28/2016	1,112.24
434972	AUBURN SCHOOL DIST CHILD NUTR*	11/28/2016	3,068.93
434973	CASCADE M S	11/28/2016	15.00
434974	MT BAKER M S	11/28/2016	23.00
434975	RAINIER M S	11/28/2016	5.00
180	Computer	Check(s) For a Total of	529,687.89

0	Manual	Checks For a Total of	0.00
0	Wire Transfer	Checks For a Total of	0.00
0	ACH	Checks For a Total of	0.00
180	Computer	Checks For a Total of	529,687.89
Total For 180 Manual, Wire Tran, ACH & Computer Checks			529,687.89
Less 0	Voided	Checks For a Total of	0.00
Net Amount			529,687.89

FUND SUMMARY

Fund	Description	Balance Sheet	Revenue	Expense	Total
10	General Fund	29,083.70	3,624.24	335,271.02	367,978.96
20	Capital Projects	-23.34	0.00	97,473.50	97,450.16
40	ASB Fund	0.00	0.00	59,296.60	59,296.60
70	Private Purpose	0.00	0.00	4,962.17	4,962.17

The following vouchers, as audited and certified by the Auditing Officer as required by RCW 42.24.080, and those expense reimbursement claims certified as required by RCW 42.24.090, are approved for payment. Those payments have been recorded on this listing which has been made available to the board.

As of November 28, 2016, the board, by a _____ vote, approves payments, totaling \$134,752.68. The payments are further identified in this document.

Total by Payment Type for Cash Account, US Bank Wire Transfers:
Wire Transfer Payments 201600116 through 201600148, totaling \$134,752.68

Secretary _____	Board Member _____
Board Member _____	Board Member _____
Board Member _____	Board Member _____

Check Nbr	Vendor Name	Check Date	Check Amount
201600116	DK CUSTOM INK	11/28/2016	1,511.00
201600117	GOSNEY MOTOR PARTS INC	11/28/2016	1,096.25
201600118	BELLAIR CHARTERS	11/28/2016	2,324.71
201600119	UNITED PARCEL SERVICE	11/28/2016	23.90
201600120	KING COUNTY DIRECTORS ASSN	11/28/2016	6,813.29
201600121	STAPLES BUSINESS ADVANTAGE	11/28/2016	9,631.05
201600122	DECA INC	11/28/2016	1,421.40
201600123	WASH DECA INC	11/28/2016	2,512.24
201600124	EASTBAY INC	11/28/2016	1,081.76
201600141	SANDLAND PROMOTIONS	11/28/2016	1,450.70
201600142	AT & T	11/28/2016	152.91
201600143	CEDAR GROVE ORGANICS RECYCLING	11/28/2016	3,364.10
201600144	CITY OF AUBURN UTILITIES	11/28/2016	53,369.98
201600145	REPUBLIC SERVICES #176	11/28/2016	3,785.08
201600146	VERIZON WIRELESS	11/28/2016	0.94
201600147	OFFICE DEPOT INC ACCT#8011 073	11/28/2016	43,632.91
201600148	LES SCHWAB TIRE CENTER	11/28/2016	2,580.46

Check Nbr	Vendor Name	Check Date	Check Amount
17	Wire Transfer Check(s) For a Total of		134,752.68

0	Manual	Checks For a Total of	0.00
17	Wire Transfer	Checks For a Total of	134,752.68
0	ACH	Checks For a Total of	0.00
0	Computer	Checks For a Total of	0.00
Total For 17	Manual, Wire Tran, ACH & Computer	Checks	134,752.68
Less 0	Voided	Checks For a Total of	0.00
		Net Amount	134,752.68

F U N D S U M M A R Y

Fund	Description	Balance Sheet	Revenue	Expense	Total
10	General Fund	49,297.34	0.00	77,478.24	126,775.58
40	ASB Fund	0.00	0.00	7,977.10	7,977.10

The following vouchers, as audited and certified by the Auditing Officer as required by RCW 42.24.080, and those expense reimbursement claims certified as required by RCW 42.24.090, are approved for payment. Those payments have been recorded on this listing which has been made available to the board.

As of November 28, 2016, the board, by a _____ vote, approves payments, totaling \$235,641.11. The payments are further identified in this document.

Total by Payment Type for Cash Account, AP Direct Dep Settlement Accou:
ACH Numbers 161700597 through 161700696, totaling \$235,641.11

Secretary _____	Board Member _____
Board Member _____	Board Member _____
Board Member _____	Board Member _____

Check Nbr	Vendor Name	Check Date	Check Amount
161700597	AARSTAD, EVANNE	11/28/2016	156.67
161700598	AINSWORTH, KAREN M	11/28/2016	1,700.00
161700599	BARTRO, JANIE RHEA	11/28/2016	50.00
161700600	BERGER, MARIE L	11/28/2016	199.00
161700601	BUCCI, TIFFANY JEAN	11/28/2016	139.89
161700602	BURKHAUSER, VALERIE KAYE	11/28/2016	593.30
161700603	BURT, TIFFANY ANN	11/28/2016	63.02
161700604	CAMPBELL-AIKENS, JANIS GAIL	11/28/2016	110.00
161700605	CAPPA, BRITTANY BELLE JEAN	11/28/2016	295.00
161700606	CARSTENS, CORRIE ANN	11/28/2016	500.00
161700607	CHIPPS FREEMAN, SUZAN LEE	11/28/2016	500.00
161700608	CLARK, MONICA ALICIA	11/28/2016	22.03
161700609	CLARK, ROBIN F	11/28/2016	14.87
161700610	COLBURN, KENNETH NEIL	11/28/2016	24.77
161700611	CONNORS, LISA	11/28/2016	650.00
161700612	COWAN, AARON ROBERT-JOHN	11/28/2016	387.40
161700613	DANIELS, DENISE CLARISE	11/28/2016	283.50

Check Nbr	Vendor Name	Check Date	Check Amount
161700614	DAVIS, MARGERY ANN	11/28/2016	800.00
161700615	DEBOLT, JULIE LYNN	11/28/2016	64.48
161700616	DOVHALETS, MARIA	11/28/2016	85.00
161700617	DUCA, CARMELLA A	11/28/2016	500.00
161700618	DUDLEY, THOMAS WAYNE	11/28/2016	34.94
161700619	ECKLUND, KARLY NICOLE	11/28/2016	33.46
161700620	Vendor Continued Check	11/28/2016	0.00
161700621	FOOD SERVICES OF AMERICA *	11/28/2016	112,756.45
161700622	FORSBERG, RANDALL STEVEN	11/28/2016	50.00
161700623	FRUEH, CHRISTINA LEIGH	11/28/2016	124.55
161700624	HERNDON, JENNIFER RAE	11/28/2016	500.00
161700625	HOGENSON, LAURA VIRGINIA	11/28/2016	87.31
161700626	HOLLOMAN, LEONARD E	11/28/2016	82.40
161700627	JEFFREYS, BRENDAN THOMAS	11/28/2016	375.36
161700628	JENKINS, MARILYN K	11/28/2016	240.00
161700629	JORDAN, GARY D	11/28/2016	37.85
161700630	KEITH, ALAURA SHELEE	11/28/2016	825.00
161700631	KENWORTHY, ROBERT DAVID	11/28/2016	63.18
161700632	KIILSGAARD, LESLIE LOUISE	11/28/2016	141.03
161700633	KINKELA, MERILEE	11/28/2016	59.40
161700634	LARSON, RHONDA	11/28/2016	103.28
161700635	LASKEY, SAMANTHA MEHAFFEY	11/28/2016	27.44
161700636	LEITZKE, TAMARA L	11/28/2016	58.25
161700637	LEWIS, BRENDA MARIE	11/28/2016	500.00
161700638	LUTES-JOHNSON, TRINA KAY	11/28/2016	500.00

Check Nbr	Vendor Name	Check Date	Check Amount
161700639	MASON, JERI LYNN	11/28/2016	12.15
161700640	MAYER, MARGARET S	11/28/2016	77.54
161700641	MCCALL, ELIZABETH ANN	11/28/2016	72.31
161700642	MCDERMOTT, THOMAS J	11/28/2016	1,193.59
161700643	MCHENRY, ANDREA	11/28/2016	362.72
161700644	NAGEL, MICHELLE ANN	11/28/2016	18.14
161700645	NELSON, MICHELLE D D	11/28/2016	13.99
161700646	PETRIE, DELLA JILL	11/28/2016	228.00
161700647	PULLEN, KATERINA MAY	11/28/2016	500.00
161700648	RAMIREZ JR, FRANK J	11/28/2016	120.80
161700649	REIN, JENNIFER LEE	11/28/2016	37.16
161700650	REINHARDT, CARMEN ZORAIDA	11/28/2016	475.00
161700651	RUMBAUGH, WAYNE D	11/28/2016	1,595.16
161700652	SAMUELSON, JENNIFER M	11/28/2016	19.12
161700653	SARGENT, LORA A	11/28/2016	55.07
161700654	SHU-MINUTOLI, KAREN	11/28/2016	112.86
161700655	SPICCIATI, ALAN	11/28/2016	18.00
161700656	SUNBELT STAFFING LLC	11/28/2016	9,526.50
161700657	SWAIM, ROBERT PAUL	11/28/2016	366.66
161700658	TECHNOLOGY EXPRESS	11/28/2016	2,796.54
161700659	Vendor Continued Check	11/28/2016	0.00
161700660	Vendor Continued Check	11/28/2016	0.00
161700661	Vendor Continued Check	11/28/2016	0.00
161700662	Vendor Continued Check	11/28/2016	0.00
161700663	Vendor Continued Check	11/28/2016	0.00

Check Nbr	Vendor Name	Check Date	Check Amount
161700664	Vendor Continued Check	11/28/2016	0.00
161700665	US BANK CORP PROCUREMENT CARD	11/28/2016	22,380.33
161700666	US BANK CORP TRAVEL PAYMENT	11/28/2016	26,814.88
161700667	Vendor Continued Check	11/28/2016	0.00
161700668	Vendor Continued Check	11/28/2016	0.00
161700669	US BANK CTE P CARDS	11/28/2016	7,587.76
161700670	WAGNER, VICKI LYNN	11/28/2016	54.06
161700671	WEIBEL, MICHAEL A	11/28/2016	37.50
161700672	WHITE, KENNY L	11/28/2016	486.00
161700673	WILLSON, MARY LORANE	11/28/2016	345.20
161700674	WOOD, RICHARD ROSS	11/28/2016	500.00
161700675	WOOLMAN, KELLY JEAN	11/28/2016	90.90
161700676	WRIGHT, TIMOTHY A	11/28/2016	43.77
161700677	FRICKS, RONALD E	11/28/2016	137.85
161700678	US BANK CORP PROCUREMENT CARD	11/28/2016	4,760.52
161700679	AUBURN SENIOR HIGH IMPREST	11/28/2016	744.00
161700680	BAUMSTARK, PATRIA R	11/28/2016	150.58
161700681	CARR, CHRISTOPHER JEFFREY	11/28/2016	10.93
161700682	CATES, JUDITH MARIE	11/28/2016	46.65
161700683	CRATER, LAUREN BREANNE	11/28/2016	11.80
161700684	JENSEN, KELLY ANN	11/28/2016	404.80
161700685	MUSIAL, DIANA ROSE	11/28/2016	55.09
161700686	PIZZA TIME	11/28/2016	3,731.07
161700687	ROWE, ALESHA MARIE	11/28/2016	15.71
161700688	TARSI, JANET MARIE	11/28/2016	33.08

Check Nbr	Vendor Name	Check Date	Check Amount
161700689	THOMAS, JANA DARLENE	11/28/2016	138.07
161700690	Vendor Continued Check	11/28/2016	0.00
161700691	Vendor Continued Check	11/28/2016	0.00
161700692	Vendor Continued Check	11/28/2016	0.00
161700693	Vendor Continued Check	11/28/2016	0.00
161700694	US BANK CORP PROCUREMENT CARD	11/28/2016	19,659.68
161700695	US BANK CORP TRAVEL PAYMENT	11/28/2016	5,998.88
161700696	US BANK CTE P CARDS	11/28/2016	61.86

100 ACH

Check(s) For a Total of

235,641.11

0	Manual	Checks For a Total of	0.00
0	Wire Transfer	Checks For a Total of	0.00
100	ACH	Checks For a Total of	235,641.11
0	Computer	Checks For a Total of	0.00
Total For 100	Manual, Wire Tran, ACH & Computer	Checks	235,641.11
Less 0	Voided	Checks For a Total of	0.00
	Net Amount		235,641.11

F U N D S U M M A R Y

Fund	Description	Balance Sheet	Revenue	Expense	Total
10	General Fund	-616.72	0.00	200,297.26	199,680.54
20	Capital Projects	0.00	0.00	4,898.37	4,898.37
40	ASB Fund	-497.99	0.00	31,560.19	31,062.20

**AUBURN SCHOOL DISTRICT NO. 408
RESOLUTION NO. 1228**

**A RESOLUTION TO RECERTIFY THE 2017 GENERAL FUND LEVY
FROM \$40,472,263 TO \$40,700,000
AND TO RECERTIFY THE 2017 DEBT SERVICE FUND LEVY
FROM \$16,337,000 TO \$28,000,000**

WHEREAS, on February 9, 2016, the voters of Auburn School District No. 408 of King and Pierce Counties passed a 2017 General Fund Education Program and Operations Replacement Levy in the amount of \$40,700,000; and

WHEREAS, a public hearing was held June 27, 2016, as required by the laws of the State of Washington to adopt a General Fund budget for Auburn School District No. 408, King and Pierce Counties, Washington for the 2016-17 fiscal year certifying a levy of \$40,472,263 for 2017; and

WHEREAS, the final calculations have been released from the Office of the Superintendent of Public Instruction increasing the allowable levy by \$227,737 to \$40,700,000; and

WHEREAS, on November 8, 2016, the voters of Auburn School District No. 408 of King and Pierce Counties passed the \$456,056,000 School Construction and Replacement General Obligation Bonds; and

WHEREAS, the Debt Service Fund will require an additional \$11,663,000 for debt service payments for 2017 for the bonds sold to construct and modernize schools; and,

NOW, THEREFORE, BE IT RESOLVED that the General Fund Education Program and Operations Replacement Levy for 2017 collection be recertified to the amount of \$40,700,000 from the previously certified amount of \$40,472,263; and the Debt Service Fund Levy for 2017 collection be recertified from \$16,337,000 to \$28,000,000; and

BE IT FURTHER RESOLVED, that copies of this resolution be transmitted to the appropriate officers of Puget Sound Education Service District, King and Pierce Counties and the Superintendent of Public Instruction.

ADOPTED this 28th day of November, 2016.

**BOARD OF DIRECTORS
AUBURN SCHOOL DISTRICT NO. 408**

ATTEST:

Secretary to the Board

AUBURN SCHOOL DISTRICT NO. 408

FINANCIAL STATEMENTS
FOR
OCTOBER 2016

AUBURN SCHOOL DISTRICT NO. 408
MONTHLY FINANCIAL REPORTS
TABLE OF CONTENTS

- I. Combined Balance Sheet
 - A. Governmental Funds
 - B. Trust Funds and Account Groups
- II. Budget Status Reports
 - A. General Fund
 - B. Transportation Vehicle Fund
 - C. Capital Projects Fund
 - D. Debt Service Fund
 - E. ASB Fund
 - 1. High Schools
 - 2. Middle Schools
- III. Private Purpose Trust Fund Statement
- IV. NBN Employee Benefits Trust Fund Statement
- V. Local Grants

AUBURN SCHOOL DISTRICT NO. 408
BALANCE SHEETS - GOVERNMENTAL FUNDS
October 31, 2016

	GENERAL	TRANSPORT VEHICLE	CAPITAL PROJECTS	DEBT SERVICE	ASB
ASSETS					
Cash and cash equivalents	22,375,720	2,567,693	43,480,050	13,255,070	1,903,797
Restricted Cash	17,864	2,137	73,132	23,208	3,383
Property taxes receivable	4,689,642	-48	487,952	1,934,034	
Accounts receivable	789,779				0
Interest receivable	0	0	0	0	0
Due from other funds	-12,468	0	-15,505	1,327	0
Due from other governments	0		518,673		
Inventory of supplies	273,581				
Prepays	0				0
Total Assets	28,134,118	2,569,782	44,544,303	15,213,639	1,907,180
LIABILITIES and EQUITY					
Liabilities:					
Accounts payable	76,914	0	33,775		34,249
Estimated Unemployment Payable	23,150				
Due to other governments	8,070	964	-15,505	10,488	1,529
Due to other funds	-14,178		4,054		3,037
Deferred revenue	4,781,579	-48	488,974	1,934,034	0
Total Liabilities	4,875,535	916	511,299	1,944,523	38,815
Equity:					
Non Spendable Fund Bal--Inven	395,350				251
Restricted for Carryovers	389,618				
Restricted for Food Services	2,533,213				
Restricted from Bond Proceeds			8,327,653		
Restricted from Levy Proceeds			7,087,330		
Restricted from State Proceeds			21,835,336		
Restricted from Impact Fees			-454,893		
Restricted for Fund Purpose		2,991,760			1,868,114
Restricted to Debt Service				1,655,164	
Assigned to Contingencies	300,000				
Assigned to Other Purposes	1,800,000				
Assigned To Fund Purposes		-422,894	7,237,578	11,613,952	
Unassigned Fund Balance	17,840,402				
Total Equity	23,258,584	2,568,866	44,033,004	13,269,116	1,868,366
Total Liabilities and Equity	28,134,118	2,569,782	44,544,303	15,213,639	1,907,180

AUBURN SCHOOL DISTRICT NO. 408
BALANCE SHEETS - TRUST FUNDS AND ACCOUNT GROUPS
October 31, 2016

	TRUST FUNDS		ACCOUNT GROUPS	
	PRIV PURP TRUST	NBN EMPLOY BENEFITS	GENERAL FIXED ASSETS	GENERAL LONG-TERM DEBT
ASSETS				
Cash and cash equivalents	575,781	161,702		
Restricted Cash	1,591	465		
Due From Other Funds	0	0		
Accounts receivable				
Interest receivable	0	0		
Fixed assets			383,266,829	
Other debits:				
Amount available in Debt Service Fund				13,269,116
Amount to be provided for retirement of general long-term obligations				106,052,897
Total Assets	577,372	162,166	383,266,829	119,322,013
LIABILITIES and EQUITY				
Liabilities:				
Accounts Payable	275	0		
Compensated absences payable				3,737,013
Due to other governments	719	210		
Due To Other Funds		0		
General obligation bonds payable				115,585,000
Total Liabilities	994	210	0	119,322,013
Equity:				
Investment in general fixed assets			383,266,829	
Fund balances:				
Assigned To Fund Purposes	576,378	161,956		
Total Equity	576,378	161,956	383,266,829	0
Total Liabilities and Equity	577,372	162,166	383,266,829	119,322,013

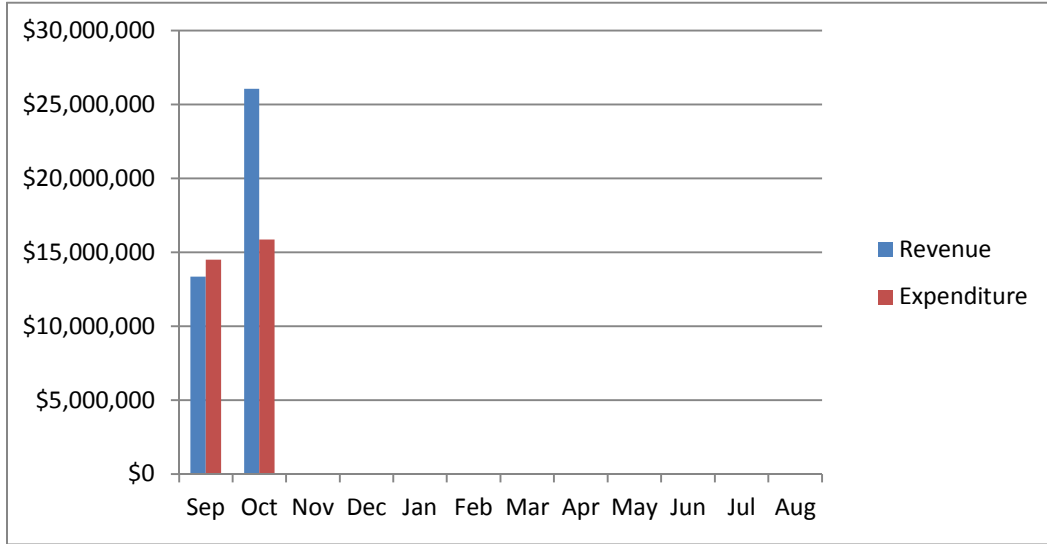
<p align="center">Auburn School District No. 408 General Fund Budget Status Summary</p>	
---	--

	REVENUE			EXPENDITURES			FUND BALANCE
Fiscal Year	Average	Actual	Actual	Average	Actual	Monthly	Beginning
2015 - 16	Cum %	Cum %	Monthly	Cum %	Cum %**	Amount	10,306,157
September	5.97%	5.97%	11,443,447	7.04%	11.20%	13,737,159	8,016,795
October	19.65%	19.65%	26,224,267	14.73%	19.06%	15,023,392	19,231,249
November	25.63%	25.63%	11,472,737	22.42%	26.38%	14,993,672	15,710,314
December	31.80%	32.11%	11,821,950	30.28%	33.87%	15,345,106	12,778,481
January	38.89%	39.40%	13,587,231	37.66%	41.10%	14,399,492	12,358,800
February	46.68%	47.19%	14,942,850	45.62%	48.82%	15,537,546	11,764,104
March	54.13%	54.64%	14,274,773	53.55%	56.79%	15,480,856	10,558,020
April	69.18%	69.69%	28,852,294	61.47%	64.34%	15,460,114	23,950,200
May	76.23%	76.99%	13,531,793	69.34%	72.07%	15,370,375	22,574,615
June	81.12%	81.88%	9,376,207	77.19%	79.81%	15,325,100	16,625,722
July	88.18%	88.93%	13,517,675	85.16%	87.68%	15,557,013	14,586,384
August	97.61%	98.36%	18,085,184	94.63%	94.63%	18,480,153	14,186,101
			Revenue			Expenditure	Fund Balance
Anticipated - First Budget			191,714,925			195,187,148	6,527,777
Actual - At Fiscal Year End			188,577,307			184,701,714	14,186,101
** Includes encumbrances.							

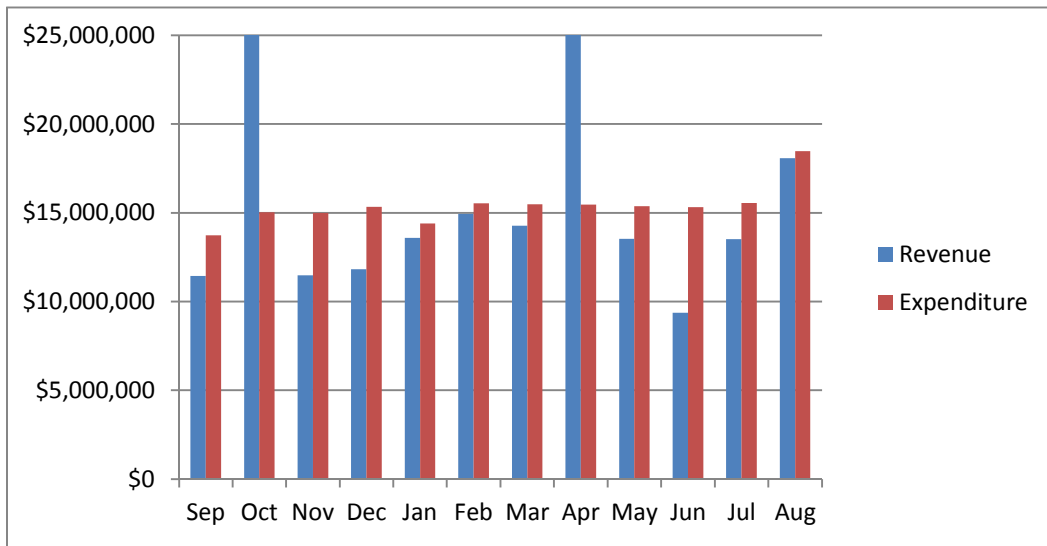
	REVENUE			EXPENDITURES			FUND BALANCE
Fiscal Year	Average	Actual	Actual	Average	Actual	Monthly	Beginning
2014 - 15	Cum %	Cum %	Monthly	Cum %	Cum %**	Amount	9,416,432
September	5.64%	5.63%	9,600,271	6.59%	11.23%	11,493,198	7,523,505
October	19.96%	19.93%	24,381,007	14.62%	18.99%	13,998,540	17,905,973
November	27.27%	26.57%	12,457,337	22.71%	26.78%	14,097,667	15,140,231
December	33.90%	33.18%	11,280,745	30.57%	34.44%	13,715,438	12,705,623
January	40.39%	39.91%	11,049,790	38.24%	42.20%	13,366,760	10,814,353
February	46.91%	46.82%	11,114,885	46.01%	49.17%	13,541,044	8,936,027
March	54.03%	54.20%	12,123,196	54.11%	54.11%	14,124,959	7,367,771
April	68.71%	69.23%	24,991,693	62.38%	64.91%	14,418,327	18,551,214
May	76.52%	77.04%	13,295,630	70.27%	72.61%	13,753,159	18,093,684
June	81.15%	81.97%	7,883,016	78.32%	80.67%	14,037,824	12,442,773
July	88.71%	89.74%	12,879,517	86.60%	88.58%	14,437,607	11,242,453
August	98.02%	99.05%	15,843,044	96.23%	96.22%	16,779,340	10,306,157
			Revenue			Expenditure	Fund Balance
Anticipated - First Budget			170,274,046			174,344,494	5,962,883
Actual - At Fiscal Year End			168,650,646			167,760,921	10,306,157
** Includes encumbrances.							

AUBURN SCHOOL DISTRICT No. 408 GENERAL FUND

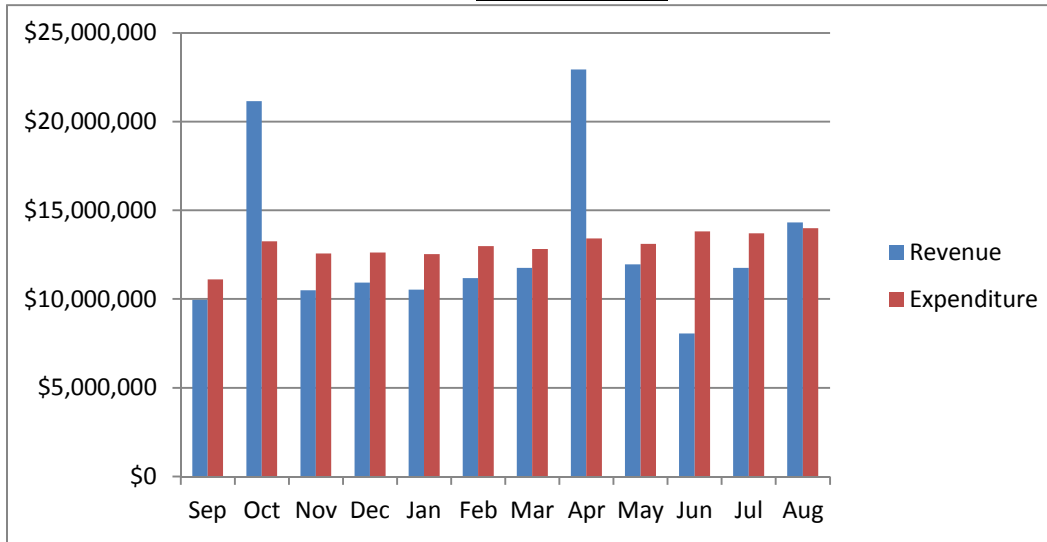
2016 - 17



2015 - 16



2014 - 15



Auburn School District No. 408
General Fund Budget Status
For the Month of October, 2016

	Annual Budget	Actual For Month	Total For Year	Encumbrance	Balance	Percent
TOTAL BEGINNING FUND BALANCE	\$ 14,000,000		14,186,101			
REVENUES AND OTHER FINANCING SOURCES						
1000 Local Taxes	39,373,979	12,438,437	13,168,642		26,205,337	33.45%
2000 Local Non-Tax	7,886,184	742,691	1,123,433		6,762,751	14.25%
3000 State, General Purpose	111,001,307	9,934,835	19,366,803		91,634,504	17.45%
4000 State, Special Purpose	26,653,428	2,360,456	4,680,209		21,973,219	17.56%
5000 Federal, General Purpose	26,383	-	-		26,383	0.00%
6000 Federal, Special Purpose	16,606,776	578,180	1,071,494		15,535,282	6.45%
7000 Revenues from Other District	525,000	2,863	2,863		522,137	0.55%
8000 Revenues from Other Agencies	102,700	6,000	6,000		96,700	5.84%
9000 Other Financing Sources	-	-	-		-	0.00%
Total Revenues & Other Finance Sources	202,175,757	26,063,463	39,419,443	-	162,756,314	19.50%
EXPENDITURES						
00 Regular Instruction	119,069,020	9,322,634	18,003,946	83,737,132	17,327,942	85.45%
10 Federal Stimulus	135,960	11,320	(33,857)	39,089	130,728	3.85%
20 Special Ed Instruction	25,492,739	1,990,393	3,749,362	18,848,379	2,894,998	88.64%
30 Vocational Instruction	6,839,515	554,404	1,100,486	5,221,054	517,975	92.43%
50&60 Compensatory Education	14,462,887	1,037,366	1,968,305	9,238,665	3,255,916	77.49%
70 Other Instructional Pgms	4,388,168	65,317	108,381	435,190	3,844,596	12.39%
80 Community Services	1,449,101	80,012	142,838	459,812	846,452	41.59%
90 Support Services	37,890,813	2,787,712	5,307,500	22,339,244	10,244,069	72.96%
Total Expenditures	209,728,203	15,849,158	30,346,961	140,318,566	39,062,676	81.37%
Excess Revenues/Other Financing Sources						
Over (under) Expend & Oth Financing Uses	(7,552,446)	10,214,305	9,072,482			
Total Ending Fund Balance	\$ 6,447,554		23,258,584			
Ending Fund Balance Accounts						
GL 821 Restricted for Carryovers			389,618			
GL 828 Restricted for Food Services	-		2,533,213			
GL 840 Nonspendable Fund Bal - Inv	-		395,350			
GL 875 Unrsrvd Dsgntd-Conting	-		300,000			
GL 888 Assigned to Other Purposes	-		1,800,000			
GL 890 UnRsrvd Undsgntd Fnd Bal	6,447,554		17,840,402			
Total Ending Fund Balance	\$ 6,447,554		\$ 23,258,584			
Fund Balance % of Expenditures	3%		77%			

Auburn School District No. 408
Capital Projects Fund Budget Status
For the Month of October, 2016

	Annual Budget	Actual For Month	Total For Year	Encumbrance	Balance	Percent
TOTAL BEGINNING FUND BALANCE	\$ 34,500,000		\$ 43,337,295			
REVENUES AND OTHER FINANCING SOURCES						
1000 Local Taxes	3,634,042	1,173,947	1,244,425		2,389,617	34.24%
2000 Local Non-Tax	3,025,200	44,886	47,448		2,977,752	1.57%
3000 State, General Purpose	-	-	-		-	0.00%
4000 State, Special Purpose	10,000,000	-	-		10,000,000	0.00%
5000 Federal, General Purpose	-	-	-		-	0.00%
6000 Federal, Special Purpose	-	-	-		-	0.00%
7000 Revenues from Other District	-	-	-		-	0.00%
8000 Revenues from Other Agencies	-	-	-		-	0.00%
9000 Other Financing Sources	-	-	-		-	0.00%
Total Revenues & Other Financing Sources	16,659,242	1,218,833	1,291,873	-	15,367,369	7.75%
EXPENDITURES						
10 Sites	24,200,000	92	92	-	24,199,909	0.00%
20 Buildings	3,720,000	353,471	408,889	463,499	2,847,612	23.45%
30 Equipment	5,000,000	63,043	79,817	83,882	4,836,301	3.27%
40 Energy	-	98,599	107,366	-	(107,366)	0.00%
50 Sales & Lease Expenditures		-	-	-	-	0.00%
60 Bond Issuance Expenditures		-	-	-	-	0.00%
90 Debt		-	-	-	-	0.00%
Total Expenditures	32,920,000	515,206	596,164	547,380	31,776,456	3.47%
Excess Revenues/Other Financing Sources Over (under) Expend. & Oth Financing Uses	(16,260,758)	703,627	695,709			
Total Ending Fund Balance	\$ 18,239,242		\$ 44,033,004			
Ending Fund Balance Accounts						
GL 861 Restricted from Bond Proceeds	6,905,870		8,327,653			
GL 862 Restricted from Levy Proceeds	(1,746,258)		7,087,330			
GL 863 Restricted from State Proceeds	8,239,242		21,835,336			
GL 865 Restricted from Other Proceeds	(24,315,150)		-			
GL 866 Restricted from Impact Fees	2,894,780		(454,893)			
GL 889 Assigned to Fund Purpose	10,000,000		7,237,578			
GL 890 UnRsrvd Undsgntd Fnd Bal	16,260,758					
Total Ending Fund Balance	\$ 18,239,242		\$ 44,033,004			

Auburn School District No. 408
ASB Fund Budget Status
For the Month of October, 2016

	Annual Budget	Actual For Month	Total for Year	Encumb	Balance	Percent
TOTAL BEGINNING FUND BALANCE	\$ 1,032,671		\$ 1,450,714			
REVENUES AND OTHER FINANCING SOURCES						
1000 General Student Body	1,824,512	107,970	274,734		1,549,778	15.06%
2000 Athletics	278,570	35,522	77,075		201,495	27.67%
3000 Classes	254,250	29,868	33,583		220,667	13.21%
4000 Clubs	2,214,885	101,608	297,836		1,917,049	13.45%
6000 Private Moneys	134,000	3,777	3,779		130,221	2.82%
Total Revenues & Other Financing Sources	4,706,217	278,744	687,008	-	4,019,209	14.60%
EXPENDITURES						
1000 General Student Body	1,544,905	65,337	80,827	53,285	1,410,793	8.68%
2000 Athletics	398,543	31,766	42,320	13,065	343,158	13.90%
3000 Classes	266,165	5,813	11,659	-	254,506	4.38%
4000 Clubs	2,354,134	97,277	133,456	107,883	2,112,795	10.25%
6000 Private Moneys	134,000	1,094	1,094	-	132,906	0.82%
Total Expenditures	4,697,747	201,287	269,357	174,232	4,254,158	9.44%
Excess Revenues/Other Financing Sources Over (under) Expend. & Oth Financing Uses	8,470	77,457	417,651			
Total Ending Fund Balance	\$ 1,041,141		\$ 1,868,366			
Ending Fund Balance Accounts						
GL 819 Restricted for Fund Purpose	1,041,141		1,868,114			
GL840 Nonspendable-Inven/Prepaid			251			
GL 889 Assigned to Fund Purposes						
Total Ending Fund Balance	\$ 1,041,141		\$ 1,868,366			

Auburn School District No. 408
Debt Service Fund Budget Status
For the Month of October, 2016

	Annual Budget	Actual For Month	Total Year	Encumbrance	Balance	Percent
TOTAL BEGINNING FUND BALANCE	\$ 7,745,000		\$ 7,844,352			
REVENUES AND OTHER FINANCING SOURCES						
1000 Local Taxes	16,545,121	5,118,804	5,419,095		11,126,026	32.75%
2000 Local Non-Tax	40,000	5,669	5,669		34,331	14.17%
3000 State, General Purpose		-	-		-	0.00%
5000 Federal, General Purpose		-	-		-	0.00%
6000 Federal, Special Purpose		-	-		-	0.00%
9000 Other Financing Sources		-	-		-	0.00%
Total Revenues & Other Financing Sources	16,585,121	5,124,473	5,424,764		11,160,357	32.71%
EXPENDITURES						
Matured Bond Expenditures	10,635,000	-	-	-	10,635,000	0.00%
Interest on Bonds	6,221,363	-	-	-	6,221,363	0.00%
Interfund Loan Interest	-	-	-	-	-	0.00%
Bond Transfer Fees	500	-	-	-	500	0.00%
Arbitrage Rebate	-	-	-	-	-	0.00%
Underwriter's fees	-	-	-	-	-	0.00%
Total Expenditures	16,856,863	-	-	-	16,856,863	0.00%
Other Financing Uses		-	-			
Excess Revenues/Other Financing Sources Over (under) Expend. & Oth Financing Uses	(271,742)	5,124,473	5,424,764			
Total Ending Fund Balance	\$ 7,473,258		\$ 13,269,116			
Ending Fund Balance Accounts						
GL 810 Reserved For Other Items			-			
GL 830 Reserved For Debt Service	7,745,000		1,655,164			
GL 889 Assigned to Fund Purposes	(271,742)		11,613,952			
GL 890 UnRsrvd Undsgntd Fnd Bal						
Total Ending Fund Balance	\$ 7,473,258		\$ 13,269,116			

Auburn School District No. 408
Transportation Vehicle Fund Budget Status
For the Month of October, 2016

	Annual Budget	Actual For Month	Total For Year	Encumb	Balance	Percent
TOTAL BEGINNING FUND BALANCE	\$ 1,109,088		\$ 2,991,760			
REVENUES AND OTHER FINANCING SOURCES						
1000 Local Taxes	-	-	-		-	0.00%
2000 Local Non-Tax	11,200	2,118	2,118		9,082	18.91%
3000 State, General Purpose	0	-	-		-	0.00%
4000 State, Special Purpose	741,597	-	-		741,597	0.00%
5000 Federal, General Purpose	-	-	-		-	0.00%
8000 Revenues from Other Agencies	-	-	-		-	0.00%
9000 Others Financing Sources	-	111,408	111,408		(111,408)	0.00%
Total Revenues & Other Financing Sources	752,797	113,526	113,526	-	639,271	15.08%
EXPENDITURES						
Type 30 Equipment	600,000	141,761	536,420	377,637	(314,057)	152.34%
Total Expenditures	600,000	141,761	536,420	377,637	(314,057)	152.34%
Excess Revenues/Other Financing Sources Over (under) Expend & Oth Financing Uses	152,797	(28,235)	(422,894)			
Total Ending Fund Balance	\$ 1,261,885		\$ 2,568,866			
Ending Fund Balance Accounts						
GL 819 Restricted for Fund Purposes	1,109,088		2,991,760			
GL 889 Assigned to Special Fund Purposes	152,797		(422,894)			
GL 890 UnRsrvd Undsgntd Fnd Bal			-			
Total Ending Fund Balance	\$ 1,261,885		\$ 2,568,866			

AUBURN SCHOOL DISTRICT No. 408

ASB FUND

OCTOBER, 2016

HIGH SCHOOLS

	Auburn High	Auburn Mountainview	Auburn Riverside	West Auburn	TOTAL
	401	405	408	504	
BEGINNING BALANCE	\$ 192,448.20	\$ 288,256.12	\$ 353,697.83	\$ 7,942.23	\$ 842,344.38
REVENUES	\$ 173,706.60	\$ 174,604.04	\$ 185,366.38	\$ 58.05	\$ 533,735.07
EXPENDITURES					
General	\$ 17,949.13	\$ 31,369.93	\$ 12,365.43	\$ -	\$ 61,684.49
Athletics	13,151.44	8,335.79	20,693.00	-	42,180.23
Classes	2,874.50	6,950.86	991.30	-	10,816.66
Clubs	42,805.11	36,093.94	36,316.36	-	115,215.41
Private Monies	287.54	692.85	-	-	980.39
TOTAL EXPENDITURES	\$ 77,067.72	\$ 83,443.37	\$ 70,366.09	\$ -	\$ 230,877.18
TRANSFERS					
General	\$ -	\$ 15,500.00	\$ 19,500.00	\$ -	\$ 35,000.00
Athletics	-	(15,500.00)	(13,427.20)	-	(28,927.20)
Classes	-	-	-	-	-
Clubs	-	-	(6,072.80)	-	(6,072.80)
Private Monies	-	-	-	-	-
TOTAL TRANSFERS	\$ -	\$ -	\$ -	\$ -	\$ (0.00)
OVER/ (UNDER)	\$ 96,638.88	\$ 91,160.67	\$ 115,000.29	\$ 58.05	\$ 302,857.89
ENDING BALANCE	\$ 289,087.08	\$ 379,416.79	\$ 468,698.12	\$ 8,000.28	\$ 1,145,202.27

AUBURN SCHOOL DISTRICT No. 408

ASB FUND

OCTOBER, 2016

MIDDLE SCHOOLS

	Cascade	Mt. Baker	Rainier	Olympic	TOTAL
	202	207	206	203	
BEGINNING BALANCE	\$ 72,323.90	\$ 68,999.99	\$ 109,505.87	\$ 102,959.00	\$ 353,788.76
REVENUES	\$ 21,621.73	\$ 43,684.24	\$ 35,772.86	\$ 17,849.80	\$ 118,928.63
EXPENDITURES					
General	\$ 4,229.06	\$ 56.45	\$ 7,701.42	\$ 1,476.77	\$ 13,463.70
Athletics	-	-	71.20	68.90	140.10
Classes	-	65.00	777.54	-	842.54
Clubs	10,530.82	3,154.27	4,420.17	135.27	18,240.53
Private Monies	-	114.05	-	-	114.05
TOTAL EXPENDITURES	\$ 14,759.88	\$ 3,389.77	\$ 12,970.33	\$ 1,680.94	\$ 32,800.92
TRANSFERS					
General	\$ -	\$ 14,835.00	\$ 2,000.00	\$ -	\$ 16,835.00
Athletics	-	(7,260.00)	(2,000.00)	-	(9,260.00)
Classes	-	(2,500.00)	-	-	(2,500.00)
Clubs	-	(5,075.00)	-	-	(5,075.00)
Private Monies	-	-	-	-	-
TOTAL TRANSFERS	\$ -	\$ -	\$ -	\$ -	\$ -
OVER/ (UNDER)	\$ 6,861.85	\$ 40,294.47	\$ 22,802.53	\$ 16,168.86	\$ 86,127.71
ENDING BALANCE	\$ 79,185.75	\$ 109,294.46	\$ 132,308.40	\$ 119,127.86	\$ 439,916.47

AUBURN SCHOOL DISTRICT NO. 408
PRIVATE PURPOSE TRUST FUND STATEMENT
October 31, 2016

REVENUES:

InvestED

Scholarship Donations:

6007 Pat Kuhlman	1,000	
6024 Rotary	1,473	
6067 ARHS English SC	500	
6089 Watt Memorial	125	
6103 Linda Cowan	100	
6505 Invest Ed - AMHS	100	
7004 ARHS Win Wishes	1,080	
7006 Native Am Students	60	
Total Scholarship Donations		4,438
Interest		456
Total Revenues		<u>4,894</u>

EXPENDITURES:

InvestED 9,766

6204 Auburn Noon Lions	-500	
6502 Invest Ed - Casc	170	
6505 Invest Ed - AMHS	53	
6520 Invest Ed - RAI	94	
6527 Invest Ed - MTB	224	
6528 Invest Ed - ARHS	735	
7005 AHS Booster Club	1,509	
7006 Native Am Students	8,258	
Total Expenditures		<u>10,542.35</u>

Excess of Revenue over (under) Expenditure -5,649

Fund Balance - Beginning of the Year 582,027

Fund Balance - Year to Date \$ 576,378

AUBURN SCHOOL DISTRICT NO 408
NBN Employee Benefits Trust Fund Statement
October 31, 2016

ADDITIONS:

Contributions from Plan Members	\$ 46,452.00
Investment Earnings	<u>89.66</u>
Total Additions	<u>46,541.66</u>

DEDUCTIONS:

Benefits Claims	40,664.74
State Program Fees	<u>-</u>
Total Deductions	<u>40,664.74</u>

NET DEDUCTIONS	5,876.92
-----------------------	----------

Net Assets at Beginning of Year	<u>156,079.43</u>
---------------------------------	-------------------

Net Assets Year To Date	<u><u>\$ 161,956.35</u></u>
-------------------------	-----------------------------

AUBURN SCHOOL DISTRICT NO. 408
Local Grants Received in October, 2016

Donor	Recipient	Amount
Communities in Schools	Gildo Rey	\$1,887.24
Communities in Schools	Dick Scobee	\$1,861.89
Communities in Schools	Cascade	\$2,374.16
Communities in Schools	Olympic	\$2,396.63
Communities in Schools	Mt. Baker	\$1,437.33
Donations	Alpac	\$11.03
Kula Foundation	Evergreen	\$31.17
Dorian Studios	Evergreen	\$849.13
Dorian Studios	Chinook	\$721.00
PTA Donation	Lake View	\$214.42
Dorian Studios	Lake View	\$985.41
PTA Donation	Gildo Rey	\$1,262.85
Camp Auburn	Gildo Rey	\$25.00
Red Robin	Lea Hill	\$33.14
Dorian Studios	Pioneer	\$710.37
Kula Foundation	Terminal Park	\$60.06
Red Robin	Ilalko	\$38.08
PTA Donation	Hazelwood	\$437.60
Kula Foundation	Hazelwood	\$33.93
Speea Grant	Hazelwood	\$250.00
McDonald's	Hazelwood	\$40.00
PTA Donation	Hazelwood	\$9.50
McDonald's	Hazelwood	\$11.00
McDonald's	Hazelwood	\$1,207.64
Red Robin	Lakeland Hills	\$32.90
PTA Donation	Lakeland Hills	\$75.00

Kula Foundation	Arthur Jacobsen	\$48.30
WMEA/Washington Music	Olympic	\$5,000.00
Fidelity	Rainier	\$15,000.00
Benevity Grant - AMHS Graphing Calculations	ASD	\$3,438.00
Gen Youth Foundation - Fuel Up to Play	ASD	\$56,000.00
4 Culture Grant PAC	ASD	\$6,000.00
Total		<u><u>\$102,482.78</u></u>

10--General Fund-- FUND BALANCE -- AGENCY ACCOUNTS -- Revised -- BUDGET-STATUS-REPORT

Fiscal Year 2016 (September 1, 2016 - August 31, 2017)

For the AUBURN SCHOOL DISTRICT NO. 408 School District for the Month of October, 2016

A. REVENUES/OTHER FIN. SOURCES	ANNUAL BUDGET	ACTUAL FOR MONTH	ACTUAL FOR YEAR	ENCUMBRANCES	BALANCE	PERCENT
1000 LOCAL TAXES	39,373,979	12,438,437.42	13,168,641.54		26,205,337.46	33.45
2000 LOCAL SUPPORT NONTAX	7,886,184	742,690.60	1,123,433.06		6,762,750.94	14.25
3000 STATE, GENERAL PURPOSE	111,001,307	9,934,834.58	19,366,802.62		91,634,504.38	17.45
4000 STATE, SPECIAL PURPOSE	26,653,428	2,360,456.33	4,680,209.02		21,973,218.98	17.56
5000 FEDERAL, GENERAL PURPOSE	26,383	.00	.00		26,383.00	0.00
6000 FEDERAL, SPECIAL PURPOSE	16,606,776	578,180.33	1,071,493.57		15,535,282.43	6.45
7000 REVENUES FR OTH SCH DIST	525,000	2,863.27	2,863.27		522,136.73	0.55
8000 OTHER AGENCIES AND ASSOCIATES	102,700	6,000.00	6,000.00		96,700.00	5.84
9000 OTHER FINANCING SOURCES	0	.00	.00		.00	0.00
<u>Total REVENUES/OTHER FIN. SOURCES</u>	202,175,757	26,063,462.53	39,419,443.08		162,756,313.92	19.50
<u>B. EXPENDITURES</u>						
00 Regular Instruction	119,069,020	9,322,634.43	18,003,946.40	83,737,131.67	17,327,941.93	85.45
10 Federal Stimulus	135,960	11,319.61	33,856.94	39,089.10	130,727.84	3.85
20 Special Ed Instruction	25,492,739	1,990,393.32	3,749,361.51	18,848,379.37	2,894,998.12	88.64
30 Voc. Ed Instruction	6,839,515	554,404.28	1,100,485.50	5,221,054.43	517,975.07	92.43
40 Skills Center Instruction	0	.00	.00	0.00	.00	0.00
50+60 Compensatory Ed Instruct.	14,462,887	1,037,365.50	1,968,305.14	9,238,665.38	3,255,916.48	77.49
70 Other Instructional Pgms	4,388,168	65,316.70	108,381.15	435,190.39	3,844,596.46	12.39
80 Community Services	1,449,101	80,011.51	142,837.64	459,811.81	846,451.55	41.59
90 Support Services	37,890,813	2,787,712.38	5,307,500.23	22,339,244.06	10,244,068.71	72.96
<u>Total EXPENDITURES</u>	209,728,203	15,849,157.73	30,346,960.63	140,318,566.21	39,062,676.16	81.37
<u>C. OTHER FIN. USES TRANS. OUT (GL 536)</u>	0	.00	.00			
<u>D. OTHER FINANCING USES (GL 535)</u>	0	.00	.00			
<u>E. EXCESS OF REVENUES/OTHER FIN.SOURCES</u>						
<u>OVER(UNDER) EXP/OTH FIN USES (A-B-C-D)</u>	7,552,446-	10,214,304.80	9,072,482.45		16,624,928.45	220.13-
<u>F. TOTAL BEGINNING FUND BALANCE</u>	14,000,000		14,186,101.05			
<u>G. G/L 898 PRIOR YEAR ADJUSTMENTS (+OR-)</u>	XXXXXXXXXX		.00			
<u>H. TOTAL ENDING FUND BALANCE</u>	6,447,554		23,258,583.50			
<u>(E+F + OR - G)</u>						

I. ENDING FUND BALANCE ACCOUNTS:

G/L 810 RESTRICTED FOR OTHER ITEMS	0	.00
G/L 815 RESTIC UNEQUALIZED DEDUCT REV	0	.00
G/L 821 RESTRICTED FOR CARRYOVER	0	389,617.53
G/L 825 RESTRICTED FOR SKILLS CENTER	0	.00
G/L 828 RESTRICTED FOR C/O OF FS REV	0	2,533,213.37
G/L 830 RESTRICTED FOR DEBT SERVICE	0	.00
G/L 835 RESTRICTD FOR ARBITAGE REBATE	0	.00
G/L 840 NONSPND FB - INVENT/PREPD ITMS	0	395,350.20
G/L 845 RESTRICTED FOR SELF-INSURANCE	0	.00
G/L 850 RESTRICTED FOR UNINSURED RISKS	0	.00
G/L 870 COMMITTED TO OTHER PURPOSES	0	.00
G/L 872 COMMITTED TO MIN FND BAL POLICY	0	.00
G/L 875 ASSIGNED CONTINGENCIES	0	300,000.00
G/L 884 ASSIGNED TO OTHER CAP PROJECTS	0	.00
G/L 888 ASSIGNED TO OTHER PURPOSES	0	1,800,000.00
G/L 890 UNASSIGNED FUND BALANCE	6,447,554	17,840,402.40
G/L 891 UNASSIGNED MIN FND BAL POLICY	0	.00
 <u>TOTAL</u>	 6,447,554	 23,258,583.50

20--Capital Projects-- FUND BALANCE -- AGENCY ACCOUNTS -- Revised -- BUDGET-STATUS-REPORT
Fiscal Year 2016 (September 1, 2016 - August 31, 2017)For the AUBURN SCHOOL DISTRICT NO. 408 School District for the Month of October, 2016

A. REVENUES/OTHER FIN. SOURCES	ANNUAL BUDGET	ACTUAL FOR MONTH	ACTUAL FOR YEAR	ENCUMBRANCES	BALANCE	PERCENT
1000 Local Taxes	3,634,042	1,173,946.83	1,244,424.67		2,389,617.33	34.24
2000 Local Support Nontax	3,025,200	44,886.09	47,448.39		2,977,751.61	1.57
3000 State, General Purpose	0	.00	.00		.00	0.00
4000 State, Special Purpose	10,000,000	.00	.00		10,000,000.00	0.00
5000 Federal, General Purpose	0	.00	.00		.00	0.00
6000 Federal, Special Purpose	0	.00	.00		.00	0.00
7000 Revenues Fr Oth Sch Dist	0	.00	.00		.00	0.00
8000 Other Agencies and Associates	0	.00	.00		.00	0.00
9000 Other Financing Sources	0	.00	.00		.00	0.00
<u>Total REVENUES/OTHER FIN. SOURCES</u>	16,659,242	1,218,832.92	1,291,873.06		15,367,368.94	7.75
<u>B. EXPENDITURES</u>						
10 Sites	24,200,000	91.50	91.50	0.00	24,199,908.50	0.00
20 Buildings	3,720,000	353,471.47	408,889.08	463,498.50	2,847,612.42	23.45
30 Equipment	5,000,000	63,043.41	79,817.17	83,881.52	4,836,301.31	3.27
40 Energy	0	98,599.42	107,365.89	0.00	107,365.89-	0.00
50 Sales & Lease Expenditure	0	.00	.00	0.00	.00	0.00
60 Bond Issuance Expenditure	0	.00	.00	0.00	.00	0.00
90 Debt	0	.00	.00	0.00	.00	0.00
<u>Total EXPENDITURES</u>	32,920,000	515,205.80	596,163.64	547,380.02	31,776,456.34	3.47
<u>C. OTHER FIN. USES TRANS. OUT (GL 536)</u>	0	.00	.00			
<u>D. OTHER FINANCING USES (GL 535)</u>	0	.00	.00			
<u>E. EXCESS OF REVENUES/OTHER FIN.SOURCES OVER (UNDER) EXP/OTH FIN USES (A-B-C-D)</u>	16,260,758-	703,627.12	695,709.42		16,956,467.42	104.28-
<u>F. TOTAL BEGINNING FUND BALANCE</u>	34,500,000		43,337,294.60			
<u>G. G/L 898 PRIOR YEAR ADJUSTMENTS (+OR-)</u>	XXXXXXXXXX		.00			
<u>H. TOTAL ENDING FUND BALANCE (E+F + OR - G)</u>	18,239,242		44,033,004.02			

I. ENDING FUND BALANCE ACCOUNTS:

G/L 810 RESTRICTED FOR OTHER ITEMS	0	.00
G/L 825 RESTRICTED FOR SKILLS CENTER	0	.00
G/L 830 RESTRICTED FOR DEBT SERVICE	0	.00
G/L 835 RESTRICTED FOR ARBITRAGE REBAT	0	.00
G/L 840 NONSPND FB - INVENT/PREPD ITMS	0	.00
G/L 850 RESTRICTED FOR UNINSURED RISKS	0	.00
G/L 861 RESTRICTED FROM BOND PROCEEDS	6,905,870	8,327,652.73
G/L 862 COMMITTED FROM LEVY PROCEEDS	1,746,258-	7,087,329.82
G/L 863 RESTRICTED FROM STATE PROCEEDS	8,239,242	21,835,336.48
G/L 864 RESTRICTED FROM FEDERAL PROCEED	0	.00
G/L 865 RESTRICTED FROM OTHER PROCEEDS	24,315,150-	.00
G/L 866 RESTRICTED FROM IMPACT FEE PROC	2,894,780	454,893.29-
G/L 867 RESTRICTED FROM MITIGATION FEES	0	.00
G/L 869 RESTRICTED FROM UNDISTRIB PROCE	0	.00
G/L 870 COMMITTED TO OTHER PURPOSES	0	.00
G/L 889 ASSIGNED TO FUND PURPOSES	10,000,000	7,237,578.28
G/L 890 UNASSIGNED FUND BALANCE	16,260,758	.00
 <u>TOTAL</u>	 18,239,242	 44,033,004.02

30--Debt Service Fund-- FUND BALANCE -- AGENCY ACCOUNTS -- Revised -- BUDGET-STATUS-REPORT
Fiscal Year 2016 (September 1, 2016 - August 31, 2017)For the AUBURN SCHOOL DISTRICT NO. 408 School District for the Month of October, 2016

A. REVENUES/OTHER FIN. SOURCES	ANNUAL BUDGET	ACTUAL FOR MONTH	ACTUAL FOR YEAR	ENCUMBRANCES	BALANCE	PERCENT
1000 Local Taxes	16,545,121	5,118,804.03	5,419,095.30		11,126,025.70	32.75
2000 Local Support Nontax	40,000	5,668.59	5,668.59		34,331.41	14.17
3000 State, General Purpose	0	.00	.00		.00	0.00
5000 Federal, General Purpose	0	.00	.00		.00	0.00
9000 Other Financing Sources	0	.00	.00		.00	0.00
<u>Total REVENUES/OTHER FIN. SOURCES</u>	16,585,121	5,124,472.62	5,424,763.89		11,160,357.11	32.71
<u>B. EXPENDITURES</u>						
Matured Bond Expenditures	10,635,000	.00	.00	0.00	10,635,000.00	0.00
Interest On Bonds	6,221,363	.00	.00	0.00	6,221,363.00	0.00
Interfund Loan Interest	0	.00	.00	0.00	.00	0.00
Bond Transfer Fees	500	.00	.00	0.00	500.00	0.00
Arbitrage Rebate	0	.00	.00	0.00	.00	0.00
Underwriter's Fees	0	.00	.00	0.00	.00	0.00
<u>Total EXPENDITURES</u>	16,856,863	.00	.00	0.00	16,856,863.00	0.00
C. <u>OTHER FIN. USES TRANS. OUT (GL 536)</u>	0	.00	.00			
D. <u>OTHER FINANCING USES (GL 535)</u>	0	.00	.00			
E. <u>EXCESS OF REVENUES/OTHER FIN. SOURCES</u>						
<u>OVER (UNDER) EXPENDITURES (A-B-C-D)</u>	271,742-	5,124,472.62	5,424,763.89		5,696,505.89	< 1000-
F. <u>TOTAL BEGINNING FUND BALANCE</u>	7,745,000		7,844,352.16			
G. <u>G/L 898 PRIOR YEAR ADJUSTMENTS (+OR-)</u>	XXXXXXXXXX		.00			
H. <u>TOTAL ENDING FUND BALANCE</u>	7,473,258		13,269,116.05			
<u>(E+F + OR - G)</u>						

I. ENDING FUND BALANCE ACCOUNTS:

G/L 810 RESTRICTED FOR OTHER ITEMS	0	.00
G/L 830 RESTRICTED FOR DEBT SERVICE	7,745,000	1,655,163.87
G/L 835 RESTRICTD FOR ARBITRAGE REBATE	0	.00
G/L 870 COMMITTED TO OTHER PURPOSES	0	.00
G/L 889 ASSIGNED TO FUND PURPOSES	271,742-	11,613,952.18
G/L 890 UNASSIGNED FUND BALANCE	0	.00
<u>TOTAL</u>	7,473,258	13,269,116.05

40--ASB Fund-- FUND BALANCE -- AGENCY ACCOUNTS -- Revised -- BUDGET-STATUS-REPORT

Fiscal Year 2016 (September 1, 2016 - August 31, 2017)

For the AUBURN SCHOOL DISTRICT NO. 408 School District for the Month of October, 2016

	ANNUAL BUDGET	ACTUAL FOR MONTH	ACTUAL FOR YEAR	ENCUMBRANCES	BALANCE	PERCENT
<u>A. REVENUES</u>						
1000 General Student Body	1,824,512	107,970.32	274,734.27		1,549,777.73	15.06
2000 Athletics	278,570	35,521.79	77,074.76		201,495.24	27.67
3000 Classes	254,250	29,867.75	33,582.75		220,667.25	13.21
4000 Clubs	2,214,885	101,607.75	297,836.41		1,917,048.59	13.45
6000 Private Moneys	134,000	3,776.69	3,779.49		130,220.51	2.82
<u>Total REVENUES</u>	4,706,217	278,744.30	687,007.68		4,019,209.32	14.60
<u>B. EXPENDITURES</u>						
1000 General Student Body	1,544,905	65,336.51	80,826.69	53,284.95	1,410,793.36	8.68
2000 Athletics	398,543	31,766.30	42,320.33	13,064.69	343,157.98	13.90
3000 Classes	266,165	5,812.75	11,659.20	0.00	254,505.80	4.38
4000 Clubs	2,354,134	97,277.16	133,455.94	107,882.68	2,112,795.38	10.25
6000 Private Moneys	134,000	1,094.44	1,094.44	0.00	132,905.56	0.82
<u>Total EXPENDITURES</u>	4,697,747	201,287.16	269,356.60	174,232.32	4,254,158.08	9.44
<u>C. EXCESS OF REVENUES</u>						
<u>OVER (UNDER) EXPENDITURES</u> (A-B)	8,470	77,457.14	417,651.08		409,181.08	> 1000
<u>D. TOTAL BEGINNING FUND BALANCE</u>	1,032,671		1,450,714.46			
<u>E. G/L 898 PRIOR YEAR ADJUSTMENTS (+OR-)</u>	XXXXXXXXXX		.00			
<u>F. TOTAL ENDING FUND BALANCE</u>	1,041,141		1,868,365.54			
<u>C+D + OR - E)</u>						

G. ENDING FUND BALANCE ACCOUNTS:

G/L 810 RESTRICTED FOR OTHER ITEMS	0	.00
G/L 819 RESTRICTED FOR FUND PURPOSES	1,041,141	1,868,114.25
G/L 840 NONSPND FB - INVENT/PREPD ITMS	0	251.29
G/L 850 RESTRICTED FOR UNINSURED RISKS	0	.00
G/L 870 COMMITTED TO OTHER PURPOSES	0	.00
G/L 889 ASSIGNED TO FUND PURPOSES	0	.00
G/L 890 UNASSIGNED FUND BALANCE	0	.00
 <u>TOTAL</u>	 1,041,141	 1,868,365.54

90--Transportation Vehicle Fund-- FUND BALANCE -- AGENCY ACCOUNTS -- Revised -- BUDGET-STATUS-REPORT

Fiscal Year 2016 (September 1, 2016 - August 31, 2017)

For the AUBURN SCHOOL DISTRICT NO. 408 School District for the Month of October, 2016

A. REVENUES/OTHER FIN. SOURCES	ANNUAL BUDGET	ACTUAL FOR MONTH	ACTUAL FOR YEAR	ENCUMBRANCES	BALANCE	PERCENT
1000 Local Taxes	0	.00	.00		.00	0.00
2000 Local Nontax	11,200	2,117.77	2,117.77		9,082.23	18.91
3000 State, General Purpose	0	.00	.00		.00	0.00
4000 State, Special Purpose	741,597	.00	.00		741,597.00	0.00
5000 Federal, General Purpose	0	.00	.00		.00	0.00
8000 Other Agencies and Associates	0	.00	.00		.00	0.00
9000 Other Financing Sources	0	111,408.22	111,408.22		111,408.22-	0.00
A. <u>TOTAL REV/OTHER FIN.SRCS(LESS TRANS)</u>	752,797	113,525.99	113,525.99		639,271.01	15.08
 B. <u>9900 TRANSFERS IN FROM GF</u>	0	.00	.00		.00	0.00
 C. <u>Total REV./OTHER FIN. SOURCES</u>	752,797	113,525.99	113,525.99		639,271.01	15.08
 D. <u>EXPENDITURES</u>						
Type 30 Equipment	600,000	141,760.91	536,419.81	377,636.77	314,056.58-	152.34
Type 60 Bond Levy Issuance	0	.00	.00	0.00	.00	0.00
Type 90 Debt	0	.00	.00	0.00	.00	0.00
 <u>Total EXPENDITURES</u>	600,000	141,760.91	536,419.81	377,636.77	314,056.58-	152.34
 E. <u>OTHER FIN. USES TRANS. OUT (GL 536)</u>	0	.00	.00			
 F. <u>OTHER FINANCING USES (GL 535)</u>	0	.00	.00			
 G. <u>EXCESS OF REVENUES/OTHER FIN SOURCES</u>						
<u>OVER(UNDER)EXP/OTH FIN USES(C-D-E-F)</u>	152,797	28,234.92-	422,893.82-		575,690.82-	376.77-
 H. <u>TOTAL BEGINNING FUND BALANCE</u>	1,109,088		2,991,759.54			
 I. <u>G/L 898 PRIOR YEAR ADJUSTMENTS(+OR-)</u>	XXXXXXXXXX		.00			
 J. <u>TOTAL ENDING FUND BALANCE</u>	1,261,885		2,568,865.72			
<u>(G+H + OR - I)</u>						

K. <u>ENDING FUND BALANCE ACCOUNTS:</u>			
G/L 810 RESTRICTED FOR OTHER ITEMS	0		.00
G/L 819 RESTRICTED FOR FUND PURPOSES	1,109,088	2,991,759.54	
G/L 830 RESTRICTED FOR DEBT SERVICE	0		.00
G/L 835 RESTRICTD FOR ARBITAGE REBATE	0		.00
G/L 850 RESTRICTED FOR UNINSURED RISKS	0		.00
G/L 889 ASSIGNED TO FUND PURPOSES	152,797	422,893.82-	
G/L 890 UNASSIGNED FUND BALANCE	0		.00
 <u>TOTAL</u>	 1,261,885	 2,568,865.72	

***** End of report *****

1. Approval of Minutes

Recommendation: That the minutes be approved.

Recommendation: That the above-mentioned revised policies be accepted for first reading with second reading and adoption scheduled for Monday, December 12.

Recommendation: That the board approve the reorganization schedule as presented.

5. Discussion

SPECIAL EDUCATION AND RELATED SERVICES FOR ELIGIBLE STUDENTS (DRAFT 11-7-16)

The district recognizes that students whose disabilities adversely impact educational performance and who require specially designed instruction can improve their educational performance when they receive special education and related services tailored to fit their needs. The district adopts the state's full educational opportunity goal to provide students in need of special education services with a free appropriate public education.

Special education programs for students eligible for special education shall be an integral part of the general educational programs of this district and shall be operated in compliance with federal and state requirements governing special education. The district will provide a continuum of placement options which may include services within and outside the district depending on the student's needs.

Not all students with disabilities are eligible for special education services. The needs of those students will be addressed individually and, if appropriate, the student will be provided accommodations or modifications required under Section 504 of the Rehabilitation Act in accordance with district policy and procedures. *Title II of the Americans with Disabilities Act, and the Washington laws against discrimination. Free Appropriate Public Education (FAPE).*

Mediation or Resolution Agreements

The board authorizes the superintendent or a designee to bind the district to a mediation or resolution agreement.

Commencement Exercise/Certificate of Attendance

In order to participate in commencement exercises, students must have met the minimum criteria for graduation prior to the date of the exercise and otherwise be in good standing with their school through the commencement date. Minimum criteria for participation may be adjusted for students with an IEP whose disabilities have impacted their opportunity to accumulate credits. Each student's IEP team will determine the student's graduation plan, including graduation date. IEP students who have attended four years of high school and need additional time to complete IEP goals and/or credits may request participation in commencement exercises. IEP students will receive a certificate of attendance until they complete their credits for graduation.

The district superintendent shall develop and maintain special education procedures necessary to implement this policy. This policy and the procedures shall be available to the public.

~~Each eligible student in special education in the district will be afforded a full education opportunity. This goal will be met consistent with the state's goals through ensuring the provision of a free appropriate public education, complying with state and local procedures, and improving performance goal indicators. The district shall comply with state and federal requirements for special education. The superintendent shall develop procedures consistent with state and federal laws and rules to implement the following:~~

- ~~free appropriate public education;~~
- ~~confidentiality of personally identifiable information;~~
- ~~identification, evaluation, eligibility, and reevaluation;~~
- participation in assessments;
- ~~development of individualized education program (IEP) and placement;~~
- ~~participation in regular education, least restrictive environment (LRE);~~
- ~~procedural safeguard; parent participation; transition from Part C to Part B services for preschool children; students in private school unilaterally placed by parents; staff qualifications and personnel development; and program administration and evaluation.~~

Cross-References:	Board Policy 2162	Education of Students with Disabilities under Section 504
	Board Policy 2163	Response to Intervention
	Board Policy 2410	High School Graduation
		Requirements
	Board Policy 3231	Student Records
	Board Policy 3241	Classroom Management, Corrective Actions or Punishment
	Board Policy 3246	Restraint, Isolation and Other Uses of Reasonable Force
Legal References:	RCW 28A.605.020	Parents' Access to Classroom or School Sponsored Activities— Limitation
	RCW 28A.600.485	Restraint of students with individualized education programs
		or plans developed under Section 504 of the Rehabilitation Act of
		1973—Procedures—Definitions
	RCW 28A.600.486	District policy on the use of isolation and restraint—Notice to parents and guardians of children who have individualized education programs or plans developed under Section 504 of the Rehabilitation Act of 1973
	Chapter 28A.155 RCW 49.60	Special Education Law against Discrimination Discrimination—Human Rights Commission
	WAC 392-172A	Rules for the Provision of Special Education
	20 U.S.C. 1400 et seq.	Individuals with Disabilities Education Improvement Act of 2004
	42 U.S.C. 12131-12133	Americans with Disabilities Act of 1990
	28 CFR Part 35	Nondiscrimination on the Basis of Disability in State and Local Government Services
	34 CFR Part 99	Family Education Rights and Privacy Act (FERPA)

29 U.S.C. 794

Section 504 of the Rehabilitation Act of 1973, as amended by the Rehabilitation Act Amendments of 1974, Pub. L. 93-516, 29 U.S.C. 794

34 CFR Part 104

Nondiscrimination on the basis of handicap in programs and activities receiving or benefiting from federal financial assistance

34 CFR Part 300

Assistance to States for the Education of Children with Disabilities and Preschool Grants for Children with Disabilities

34 CFR Part 303

Early Intervention Program for Infants and Toddlers with Disabilities

Management Resources:

2016, March Issue

2014, June Issue

2009, October Issue

Policy News, December 1999

Policy News, June 2007

Policy News, December 2007

Rule Adoption Leads to Special Education Policy

Graduation Ceremonies for Special Education Students

Updated Special Education Policy and Procedure

Adoption Date: 11.27.95

Auburn School District

Revised: 06.12.00; 06.14.04; 03.24.08; 11.08.10

ALTERNATIVE LEARNING EXPERIENCE PROGRAMS (DRAFT 11-7-16)

The district establishes the ~~<Insert the name(s) of the district's alternative learning experience program and program provider(s) here>~~ **Virtual and Learning Center Programs at West Auburn High School**, an alternative learning experience program, provided on site or over the internet or by other electronic means, as defined in WAC 392-121-182.

- A. Every student enrolled in the program shall have a written individual plan developed in collaboration with the student, the student's parents, and other interested parties. The student's supervisor, who must be certificated instructional staff or a contractor as defined in WAC 392-121-188, must approve the plan and has primary responsibility and accountability for the plan. The student learning plan must meet the following minimum criteria. The plan must:
1. Include a schedule of the duration of the program, including the beginning and ending dates;
 2. Describe the specific learning goals and performance objectives of the alternative learning experience. This requirement may be met through course syllabi or other detailed descriptions of learning requirements.
 3. Describe the average number of hours per week that the student will engage in learning activities to accomplish the objectives of the plan;
 4. Describe how weekly contact requirements will be fulfilled;
 5. Identify instructional materials essential to successful completion of the learning plan;
 6. Include a timeline and method for evaluating student progress toward the learning goals and performance objectives specified in the learning plan; and
 7. Identify whether the alternative learning experience meets one or more of the state essential academic learning requirements defined by the district. High school alternative learning plans must identify whether the experience meets state and district graduation requirements.
- B. Annually, during a public meeting, the board will approve the ratio of certificated instructional staff to full time equivalent students enrolled in alternative learning experience programs and courses.
- C. Student performance will be supervised, monitored, assessed, evaluated, and recorded by certificated instructional staff, or by certificated staff of a contractor. **Both the Virtual and Learning Center student learning plans will be supervised and evaluated by the certificated teachers at West Auburn High School. Weekly contact and progress will be logged by the certificated staff member and a monthly conference will be held to monitor progress towards graduation. The certificated teachers will record data on student performance and maintain all records supporting the individual student learning plans for each student enrolled in the Virtual and Learning Center Programs**

~~(Note: Insert here a description of the ways the local program supervises, evaluates and records data on student performance.)~~

- D. Each student enrolled in an alternative learning experience program shall have direct personal contact with school staff at least weekly, to discuss and evaluate student progress, until completion of the course objectives or the requirements of the learning plan. Direct personal contact means a face-to-face meeting with the student and, if appropriate, with the parent or guardian.
- E. Each student's educational progress will be reviewed at least monthly. The results of the reviews shall be shared with the students and with the parent or guardian of students in K-8 programs. If a student does not make satisfactory progress in the activities identified in his or her plan, a revised plan may be implemented.

F. Parent Responsibilities (Optional Policy Language):

Parents or guardians are required to participate in the program on behalf of their children in at least the following ways, or their children may be excluded or removed from the program:

1. The parent or guardian must approve their child's plan;
2. The parent or guardian must provide or implement those portions of their child's plan for alternative learning experiences that are identified in the plan under the supervision of certificated instructional staff; and
3. The parent or guardian must meet with certificated instructional staff as prescribed in their child's plan for purposes of evaluating their child's performance and/or receiving instructions on assisting with their child's alternative learning experience.

If a student's parent or guardian cannot or will not participate in the program, the supervisor of the program may accept another suitable adult who agrees to meet the policy and program requirements set out for parents on behalf of the student.

G. District Supervision:

The district shall designate one or more person(s) responsible for approving specific alternative learning experience programs or courses, monitoring compliance with WAC 392-121-182 and reporting at the end of each school year to the board of directors on the program. The annual report shall contain:

1. The alternative learning experience student headcount and full-time equivalent enrollment claimed for basic education funding;
 2. A description of how certificated and classified staff are assigned program management and instructional responsibilities that maximize student learning; including the ratio of certificated instructional staff to full time equivalent students;
 3. A description of how the written student learning plan is developed and student performance supervised and evaluated by certificated staff;
 4. A description of how the alternative learning experience program supports the districts overall goals for academic achievement; and
 5. Results of any self-evaluations conducted pursuant to WAC 392-121-182(7).
- H. The district alternative learning program shall satisfy the state board of education requirements for courses of study or equivalencies; and if the program offers credit or a high school diploma, the alternative learning program must meet the minimum high school graduation requirements.

- I. The district shall identify expenditures, directly related to the student learning plan, paid for by participants that are reimbursable by the district.

Cross References Board Policy 2020

Curriculum Development and Adoption
of Instructional Materials

Legal Reference: WAC 392-121-182

RCW 28A.320.230

Alternative learning experience
requirements

Instructional Materials – Instructional
Materials Committee

Adoption date: 12.27.95

Auburn School District

Revised: 12.27.05; 11.8.10

**REQUIRED OBSERVANCES (VETERANS DAY,
CONSTITUTION DAY, ~~AND~~ TEMPERANCE AND GOOD
CITIZENSHIP DAY, **AND DISABILITY HISTORY MONTH**)
(DRAFT 11-7-16)**

Principals shall be responsible for the preparation and presentation of educational activities of approximately 60 minutes in duration in observance of Veteran's Day. The program shall be conducted during the school week preceding the 11th day of November of each year.

Constitution Day shall be observed each year on September 17 in commemoration of the September 17, 1787, signing of the United States Constitution. If September 17 occurs on a non-school day, Constitution Day shall be conducted on the preceding Friday.

Temperance and Good Citizenship Day shall be observed on January 16 or, if on a non-school day, the Friday preceding January 16.

Disability History Month will be observed during the month of October by conducting or promoting educational activities such as school assemblies or guest speaker presentations that provide instruction, awareness and understanding of disability history and people with disabilities.

Legal References: RCW 28A.230.160

 RCW 28A.230.158
 RCW 28A.230.150

36 U.S.C. 106

Educational activities in observance of
Veteran's Day
Disability History Month--Activities
Temperance and Good Citizenship Day
— Aids in programming

Constitution and Citizenship Day

Management Resources: *Policy News*, August 2006

Constitution Day Recognition

SCHOOL-SUPPORT ORGANIZATIONS (DRAFT 11-7-16)

The board encourages the formation of a parent-teacher-student association or similar organization at each school building for the purpose of providing an opportunity through which parents, teachers and students may unite their efforts and interests to enhance the school program. In schools where no such organization exists, another parent group can be recognized by the school principal as the official body through which parents, staff and students may unite their efforts for similar purposes.

Booster clubs and/or special interest organizations may be formed to support and strengthen specific activities conducted within the school or district. All such groups must receive the approval of the school principal or superintendent in order to be recognized as a booster organization. Staff participation, cooperation and support are encouraged in such recognized organizations.

Legal References: RCW 9.46.0321

**Bingo, raffles, amusement games—No
license required, when**

USE OF SCHOOL FACILITIES (DRAFT 11-7-16)

The board subscribes to the belief that public schools are owned and operated by and for its patrons. The public is encouraged to use school facilities but shall be expected to reimburse the district for such use to insure that funds intended for education are not used for other purposes. On recommendation of the superintendent, the board shall set the rental rates schedule.

The superintendent is authorized to establish procedures for use of school facilities, including rental rates, supervisory requirements, restrictions, and security. Those using school facilities shall maintain insurance for accident and liability covering persons using the district's facilities under the sponsorship of the organization. Community athletics programs that use district facilities shall not discriminate against any person on the basis of sex in the operation, conduct or administration of their programs. For rental rate purposes, organizations seeking the use of school facilities have been divided into three categories:

School or Child-related Groups or Other Government Agencies include those organizations whose main purpose is to promote the welfare of boys and girls or to provide members of the community access to government programs or opportunities for civic participation. Examples are: Scouts, Campfire, PTA, 4-H, city or county sponsored recreation groups, polling places, political caucuses and governmental groups. When facilities are used outside of regular school hours or the district incurs extra utility, cleaning, or supervision costs, a fee, to be established by the superintendent, shall be charged to recoup those costs. Additionally, youth organizations engaged in sports activities and using school facilities must provide a statement of compliance with the policies for the management of concussion and head injury in youth sports as required by RCW 28A.600 along with appropriate insurance.

Nonprofit Groups includes those organizations which might wish to use school facilities for lectures, promotional activities, rallies, entertainment, college courses, or other activities for which public halls or commercial facilities generally are rented or owned. The district shall charge a rental rate in excess of costs incurred, except that such excess charges may be waived when a service club or other nonprofit group is raising funds for charitable purposes. Similar treatment may be granted public universities and colleges when offering college courses within the community or when any university/college is offering a course for staff at the request of the district. Nonprofit groups of the kind that, in most communities, have their own facilities (churches, lodges, veterans groups, granges, etc.) who wish to use district facilities on a regular but temporary basis may do so under this rental rate :

Commercial Enterprises include profit-making organizations and business-related enterprises. While the district would prefer these organizations use commercial or private facilities, facilities may be rented for non-regular use at the prevailing rate charged by commercial facilities in the area.

District-sponsored activities, including curricular and co-curricular functions, retain first priority in use of facilities. Authorization for use of school facilities shall not be considered as endorsement of or approval of the activity group or organization nor for the purposes it represents.

Cross Reference Board Policy 3422

Legal References: RCW 28A.230.180

RCW 4.24.660

RCW 28A.320.510

RCW 28A.335.150

RCW 28A.335.155

20 USC Sec. 7905

34 CFR Sec. 108.6

AGO 1973 No. 26, I-276

Management Resources:

2014, February Issue

2013, July Issue

2013, June Issue

2011, December Issue

Policy News, August 2009

**Student Sports—Concussion, Head
Injury and Sudden Cardiac Arrest**

**Access to campus and student
information directories by official
recruiting representatives—
Informing students of educational
and career opportunities**

**Liability of school districts under
contracts with youth programs**

Night schools, summer schools,
meetings, use of facilities for

Permitting use and rental of
playgrounds, athletic fields, or
athletic facilities

Use of buildings for youth programs —
Limited immunity

**Boy Scouts of America Equal Access
Act**

**Equal Access to Public School
Facilities for the Boy Scouts of
America and Other Designated
Youth Groups**

School districts — Use of school
facilities for presentation of
programs — Legislature — Elections

Concussion and Head Injuries
Legislation

HIRING OF RETIRED SCHOOL EMPLOYEES (DRAFT 11-7-16)

The district shall recruit, select, and employ the best-qualified individuals as employees. The district may employ persons retired from the Teachers' Retirement System (TRS), the School Employees' Retirement System (SERS), or the Public Employees' Retirement System (PERS). A retired employee shall only be rehired pursuant to this district policy.

Until August 1, 2020, the district may employ teachers in TRS Plan 2 or 3 who have retired under the alternate early retirement provisions of RCW 41.32.765(3)(b) or RCW 41.32.875(3)(b). Such employment is subject to the following conditions: 1) One calendar month must have elapsed since the retiree's accrual date; 2) the retiree must be employed exclusively as either a substitute teacher as defined in RCW 41.32.010(48)(a) or in an instructional capacity (as opposed to an administrative or supervisory capacity); and 3) the district must compensate its substitute teachers at a rate that is at least 85% of the full daily amount allocated by the state to the district for substitute teacher compensation.

All retirees of TRS, SERS, or PERS may work an annual threshold of eight hundred sixty-seven (867) hours per year while receiving retirement benefits. The annual threshold for TRS Plan 1 retirees is calculated per fiscal year. All other plans are calculated per calendar year. Qualified hours are determined by whether the retiree works in an eligible position as defined by the Department of Retirement Systems (DRS).

~~TRS 1 and PERS 1 Retirees (hired after July 22, 2007)~~

~~Beyond the eight hundred sixty-seven hours (867) per work year, eligible retirees hired from Plan I of TRS or PERS may work up to a total of one thousand five hundred hours (1,500) per year while receiving retirement benefits, subject to limitations established by DRS.~~

Cross References:	Board Policy 5610	Substitute Employment
	Board Policy 5612	Temporary Administrators
	Board Policy 5050	Contracts

Legal References:	RCW 41.32	Teachers' retirement
	41.40	Washington public employees' retirement system

Management Resources:	<i>Policy News</i> , June 2007	Revisions to Retire/Rehire Law

Adoption Date: 07.23.07
Auburn School District
Revised: 05.09.11

SUBSTITUTE EMPLOYMENT (DRAFT 11-7-16)

The board authorizes the employment of a certificated substitute in the absence of a certificated staff member. In addition, the district may use a substitute in place of a regularly contracted staff member when:

- A. Enrollment uncertainties exist at the beginning of a school year; or
- B. Resignations of regular staff do not allow sufficient time for the district to employ an immediate replacement.

On either of the latter occasions, the district ~~shall~~ **will** employ a contracted staff person within a reasonable time.

The superintendent ~~shall~~ **will** be responsible for establishing procedures by which teachers request substitutes and by which substitute teachers are assigned, employed, and compensated.

Substitute teachers who have served for 20 full consecutive working days in the same assignment ~~shall~~ **will**, from the 21st day of service on, be paid according to the regular salary schedule of certificated staff.

The board authorizes the employment of a spouse of an officer as a substitute teacher when the superintendent deems that there is a shortage of substitute teachers in the district.

Retired teachers or administrators may work up to **eight hundred sixty-seven (867) hours of employment.** ~~one thousand five hundred (1,500) hours per school year as substitutes without affecting their retirement. After eight hundred sixty-seven (867) hours of employment for a retired employee, the district will be responsible for the employer's contribution to the state retirement system for that employee for all hours worked in that school year.~~

If the superintendent reasonably anticipates that the list of qualified, willing substitutes will be exhausted, emergency substitute certification may be sought from the Office of the Superintendent of Public Instruction for persons not fully qualified for a teaching or substitute certificate. Substitutes holding emergency certification may only be assigned work when the list of fully qualified substitutes is exhausted.

The board authorizes the employment of a classified substitute in the absence of a classified staff member when a program will be adversely affected by the regular staff member's absence and when a substitute can perform the duties in a reasonable manner. A classified substitute employee's eligibility to purchase retirement service credit will be determined according to RCW 41.35 and retirement system rules. Substitute classified employee means a classified employee who is employed by the district exclusively as a substitute for an absent employee or a vacant position. The superintendent is authorized to establish procedures relating to the use of substitute classified staff.

By October 1 of each year, the district will report to the Office of the Superintendent of Public Instruction: 1) the number of substitute teachers hired per school year; 2) the number of substitute teachers hired under the expedited certification process for out-of-state teachers; 3) the full daily compensation rate per substitute teacher; and 4) the reason for hiring the substitute teacher.

Cross References: Board Policy 1610
Board Policy 5001

Legal References: **Chapter 28A.300, RCW**
RCW 28A.330.240
RCW 28A.400.300

RCW 28A.405.900

RCW 28A.410.010

RCW 41.32.570

RCW 42.23.030(9)

RCW 41.35

Management Resources: 2016, July Issue
2011, August Issue
Policy News, June 2008
Policy News, August 2001

Conflicts of Interest
Hiring of Retired School Employees

Superintendent of Public Instruction
Employment Contracts
Hiring and discharging employees —
Leaves for employees — Seniority
and leave benefits, retention upon
between schools

Certain certificated employees exempt
from chapter provisions

Certification — Duty of professional
educator standards board — Rules
— Record check — Lapsed
certificates — Superintendent of
Public Instruction as administrator

Postretirement employment —
Suspension of pension payments

Interest in contracts prohibited —
Exceptions

Washington school employees'
retirement system

Substitute Employment
Legislature Authorizes “Retire-Rehire”