

AGENDA FOR BOARD OF DIRECTORS
AUBURN SCHOOL DISTRICT NO. 408
Monday, January 26, 2015

- I. TIME AND PLACE
 - 1. 7 p.m. at the James P. Fugate Administration Building
- II. ROLL CALL
 - 1. Roll call of board members
- III. PLEDGE OF ALLEGIANCE
- IV. AUDIENCE PARTICIPATION
 - 1. Written communications
 - 2. Scheduled communications
 - 3. Unscheduled communications
 - 4. Community groups and organizations
- V. LEGISLATIVE UPDATE
- VI. STUDENT AND STAFF RECOGNITION
 - 1. Recognition of student
 - 2. Recognition of staff
- VII. STUDENT PARTICIPATION
 - 1. Auburn Riverside High School Booster Club report
 - 2. Activity/athletic report
 - 3. Requests for travel
- VIII. SCHOOL PROGRAMS AND STUDENT ACHIEVEMENT
 - 1. Lakeland Hills Elementary 2014-15 PLC presentation
 - 2. 874 Programs in the Auburn School District
 - 3. 2014-15 professional development supporting the transition to Common Core state standards
- IX. PERSONNEL
 - 1. Certificated and classified personnel report
 - 2. Requests for travel
- X. BUILDING PROGRAM
 - 1. 2014 portable classrooms electrical
 - 2. Auburn High School modernization & reconstruction project
 - 3. Auburn High School work in progress

XI. FINANCE

1. Vouchers
2. Financial statements

XII. DIRECTORS

1. Approval of minutes
2. First reading of revised policy
3. Discussion
4. Executive session

LEGISLATIVE UPDATE

The board will discuss legislative items.

STUDENT AND STAFF RECOGNITION

1. Student Recognition

The Auburn School District Board of Directors will recognize Cheylynn Parks, a senior at West Auburn High School, for being an outstanding student.

Cheylynn is a leader in the classroom and out of it. She goes out of her way to reach out to other students and act as a mentor and support person for them. She also readily assists teachers with numerous given tasks.

She has overcome difficult personal challenges and is a student who goes beyond the requirements to enrich and extend herself. She comes to school ready to work hard and stays on task. She takes responsibility for her own success.

Her advisor, Greg Watson, said, "She is always ready with a smile and a kind word, always ready to help someone else meet a challenge."

Cheylynn's favorite subject is history because she enjoys learning about the different time periods of history. After graduation, she plans to attend Green River for two years and then transfer to Western Washington University to study psychology.

Outside of school, Cheylynn plays the piano, plays on the Velocity soccer team, enjoys writing and taking her dog for walks.

2. Staff Recognition

The Auburn School District Board of Directors will recognize Veronika Raguzin-Holloman, Auburn Riverside High School counselor, for her outstanding service.

Veronika was born in Argentina and moved with her family to Tucson, Arizona, at age 17. She did not speak any English when she arrived for her senior year. She was in ESL English, math and social studies, in addition to some "not so difficult" classes and graduated, still without speaking English.

After working jobs she didn't like, she decided to go to community college and learn English. After earning her Associate's, she transferred to the University of Arizona where she earned her teaching degree. She also met her future husband, West Auburn High School principal Lenny Holloman, at U of A.

Veronika taught Spanish in Tucson and then in the Lake Washington and Federal Way School Districts. She earned her Master's in Guidance and Counseling at City University and was hired in Federal Way as a counselor.

After having two small children, she was looking for a part-time counseling job. She was hired in a job share at Auburn Riverside.

After three years job sharing, she is now a full-time counselor, in her eighth year at Auburn Riverside.

"I love counseling," she said. "I loved teaching, too, but you see a different side of students when you are a counselor."

Auburn Riverside principal Dave Halford said, "Mrs. Holloman demonstrates her value to the building daily. She is someone you can entrust with a project and know it will be completed successfully and surpass expectations. Her work ethic, experiences, and attitude add to her success."

Her boys are now 11 and 9 and she spends her free time being their chauffer to basketball, baseball, soccer, and any place else they need to be.

STUDENT PARTICIPATION

1. Auburn Riverside High School Booster Club Report

Ryan Foster, assistant superintendent of principal leadership and school programs, will introduce Frank Ramirez, Auburn Riverside High School assistant principal, who will introduce Laura Theimer and Cari Manry, Auburn Riverside High School Booster Club treasurer and secretary, respectively, who will present the Auburn Riverside High School Booster Club report and answer questions from the board.

2. Activity/Athletic Report–Auburn Riverside High School Choir Program

Frank Ramirez will introduce Jonathan Stenson, Auburn Riverside High School choir teacher, who will introduce Kaelyn Buettner, Kevin Harris, Raelene Samuelson, and Isaac Stocker, students, who will present the Auburn Riverside High School choir program and answer questions from the board.

3. Requests for Travel

a. Seven Virginia Cross Native Education Center students request permission to travel to Honolulu, Hawaii, Saturday to Saturday, February 7-14. As part of the Close-Up Foundation's Drop-Out Prevention program, the purpose of the trip is for educational study with a focus on economics, history, geography, and Native impact of the Asia-Pacific Region. Lodging will be at the Pacific Beach Hotel at Waikiki, meals will be at local restaurants, and travel will be by airplane. All expenses will be paid by the Muckleshoot Indian Tribe. Brooke Broussard, Virginia Cross Native Education Center teacher, requests permission to accompany the students. A substitute will be needed for five days. (Eight students and three staff from the Muckleshoot Tribal School will also be attending.)

b. Thirty-six Auburn High School students request permission to travel to Anaheim, California, Sunday to Thursday, May 24-28. The purpose of the trip is to perform at Disneyland. Lodging will be at the Howard Johnson hotel, meals will be at local restaurants, and travel will be by airplane. All expenses will be paid by Band/Parent Association funds. Kandy Gilbert, Auburn High School teacher, requests permission to accompany the students. A substitute will be needed for three days.

Carol Smyres, Molly Brinn, Elizabeth Jensen, Dwight Van Vleet, and Ryan Anderson, parent chaperones, request permission to accompany the students.

Recommendation:

That the above trips be approved.

SCHOOL PROGRAMS AND STUDENT ACHIEVEMENT

1. Lakeland Hills Elementary School 2014-15 PLC Presentation

Ryan Foster will introduce Colleen Barlow, Lakeland Hills Elementary principal, who will introduce Dan St. Mary, Lakeland Hills Elementary School assistant principal, who will introduce Doretta Wright, Julie McBane and Julie Botz, Lakeland Hills Elementary School staff members. The team will share a PowerPoint presentation, give a brief overview of how the Professional Learning Community model has been utilized to increase student achievement at Lakeland Hills Elementary School, and answer questions from the board. This presentation aligns with the 2013-16 District Strategic Plan: Goal 1, Objective 1, Strategy 1.

2. 874 Programs in the Auburn School District

Rhonda Larson, assistant superintendent of family engagement and student success, will introduce Robin Pratt, Native American coordinator, who will guide a mandatory school board policy review, present summary information on the Public Law 874 Impact Aid Federal Grant, and answer questions from the board. Applications for federal funds require documentation of the review and the signature of a school district representative who has been authorized by the board of directors. Such authorization is made part of the official board minutes.

Recommendation:	That Michael Newman, deputy superintendent of business and operations, be authorized to apply for and receive Public Law 874 funds for the 2015-16 school year.
-----------------	---

3. 2014-15 Professional Development Supporting the Transition to Common Core State Standards

Heidi Harris, assistant superintendent of student learning, will update the board on the professional development provided to staff supporting the transition to Common Core State Standards and answer questions from the board. This presentation aligns with the 2013-16 District Strategic Plan, goal 1: student achievement, objective 3: Instructional Framework, strategy 3: professional development, and the 2014-15 Stated District Goals standard III, "create conditions district wide for student and staff success."

PLC PRESENTATION TO THE SCHOOL BOARD

Lakeland Hills Elementary

Introduction

- ▣ Teamwork
- ▣ The Four Questions
- ▣ Advantages



- ▣ Doretta Wright
- ▣ Julie McBane
- ▣ Julie Botz

Teamwork makes the Dream Work!

- ▣ Culture of collaboration.
- ▣ Current education reform elevates the importance.
- ▣ PLCs are more valuable than ever.
- ▣ Eases the growing pains.



The Four Critical Questions

What do we want our students to learn?


How will we know when each student has learned it?

How will we respond when some students have not learned it?

How can we extend and enrich the learning for students that have reached proficiency?

Elementary School PLC Agenda & Notes

All of the work done in a PLC should focus on these four critical questions:
 1. What do we want our students to learn?
 2. How will we know when each student has learned it?
 3. How will we respond when some students do not learn it?
 4. How can we extend and enrich the learning for students who have demonstrated proficiency?



AUBURN
SCHOOL DISTRICT
 ENGAGE • EDUCATE • EMPOWER

Team	2 nd Grade	Date	1-12-15	Location	Room 302	Note Taker	Nancy Alexander
Team Members Nancy Alexander Amy Cole Marla King Diana Miller Michelle Nelson	Present <input checked="" type="checkbox"/> Absent <input type="checkbox"/>	Present <input checked="" type="checkbox"/> Absent <input type="checkbox"/>	Team Members Jen Swanson Michelle Woolery Susan Schuman Lyn Hess Tara Hatch	Present <input checked="" type="checkbox"/> Absent <input type="checkbox"/>	Present <input checked="" type="checkbox"/> Absent <input type="checkbox"/>	Team Members Dorette Wright Amanda James Stacy Hansen-Thompson Peter Lamb Carly Whitney	Present <input checked="" type="checkbox"/> Absent <input type="checkbox"/>

Content Area: Reading and Math	Standard(s): 2.2.1 - I can understand story sequence. 2.OA.2 - We can fluently add and subtract within 20.
Agenda Topics/Outcomes <small>(All of the work done in a PLC should focus on one of these 4 critical questions.)</small>	<div style="display: flex; justify-content: space-between;"> <div style="width: 48%;"> <p>1. What do we want our students to learn?</p> <input checked="" type="checkbox"/> Goal Setting/SMART Goals <input checked="" type="checkbox"/> Developing/Revising Pacing Guides, Scope & Sequence <input checked="" type="checkbox"/> Review Common Instructional Strategies/Planning for Instruction <input type="checkbox"/> Other: _____ </div> <div style="width: 48%;"> <p>3. How will we respond when some students do not learn it?</p> <input checked="" type="checkbox"/> Intervention: <u>In WTR and WTM; parent volunteers</u> </div> </div> <div style="display: flex; justify-content: space-between; margin-top: 10px;"> <div style="width: 48%;"> <p>2. How will we know when each student has learned it?</p> <input checked="" type="checkbox"/> Developing Common Formative Assessments <input checked="" type="checkbox"/> Review Student Data <input type="checkbox"/> Other: _____ </div> <div style="width: 48%;"> <p>4. How can we extend and enrich the learning for students who have demonstrated proficiency?</p> <input checked="" type="checkbox"/> Enrichment: <u>In WTR and WTM; parent volunteers</u> </div> </div>

Agenda & Notes/ Discussion	Action Item(s)	Person Responsible	Deadline/ Due Date
DIBELS is Jan. 29 th and 30 th . We'll revisit WTR groups after the DIBELS testing. We looked at the District second trimester assessment. We revised our problem solving practice problems. We looked at a couple of our upcoming reading CFAs. We added a couple of assessments to our reading pacing chart. Intervention will be provided for the new students that enrolled from other districts.	Marla will be creating a fact/opinion assessment for us.	Marla	2/12
Celebrations			

What do we want our students to learn?

- ▣ Team Norms
- ▣ Goal Setting

- ▣ Pacing Guides
- ▣ Scope and Sequence
- ▣ Common Instruction

PLC Agenda 1st grade

Read Norms

1. We will re-direct each other in a positive way if a person violates the norms
2. We will focus on improving student learning.
3. We will be supportive of each other, and equally share the workload.
4. We will honor and listen to all perspectives before making decisions.
5. Be present – body and mind

5 I am a Butterfly (ch, tch) RL.1 & RI.1 Details & Questions RI.9 Fiction vs Nonfiction HW #13 Progress Mon. Jan	6 1.OA.3 (commutative and associative) Fact Families Measurement-McCarthy January Calendar	7 How to Build a Snowman writing	8 Snowman	9 GLAD- Polar Regions Reindeer
12 Did You See Chip? (ar) RL.1 & RI.1 Details & Questions RI.9 Fict vs Nonfict HW #14	13 1.OA.3 (commutative and associative) Fact Families Math Fact Timings Assess Fact Families	14 Reindeer writing	15 Reindeer	16 GLAD- Polar Regions Reindeer
19 Martin Luther King Jr. Day Tomas Rivera (qu, wh) RI.5 & RI.5 Text Features HW #15	20 1.OA.4 use addition facts to answer subtraction facts (WB Ch. 6) Assess 1.OA.4	21 MLK Arctic animal writing cont.	22 MLK Dream Mobile	23 GLAD- Polar Regions Penguins
26 On the Way to the Pond (er, ir, ur) RI.6 Text Features HW #16	27 1.OA.8 Determine the unknown whole number in + and -	28 Penguin writing	29	30 GLAD- Polar Regions Penguins
2 February Friends Forever (-le) RI.7 Text Features HW #17	3 1.OA.8 Determine the unknown whole number in + and - Assess February Calendar	4	5 Groundhog activities Valentine's art	6

How will we know when each student has learned it?

Target: Multiply Whole Numbers						
Teacher Name: Maloney						
Teacher	First Name	Q1	Q2	Q3	Q4	Q5
Maloney		100%	0%	0%	0%	0%
Maloney		100%	0%	100%	100%	0%
Maloney		0%	0%	0%	0%	0%
Maloney		100%	100%	100%	100%	100%
Maloney		100%	100%	100%	100%	100%
Maloney		0%	100%	100%	100%	0%
Maloney		100%	100%	0%	100%	100%
Maloney		100%	100%	100%	100%	100%
Maloney		100%	100%	100%	100%	0%
Maloney		0%	100%	100%	100%	100%
Maloney		0%	100%	100%	100%	0%
Maloney		100%	0%	0%	100%	0%
Maloney		100%	100%	0%	100%	0%
Maloney		100%	100%	100%	100%	100%
Maloney		100%	100%	100%	100%	100%
Maloney		100%	100%	100%	100%	100%
Maloney		0%	100%	100%	100%	100%
Maloney		100%	100%	100%	100%	0%
Maloney		100%	100%	0%	100%	0%
Maloney		100%	100%	100%	100%	100%
Maloney		100%	100%	100%	100%	100%
Maloney		0%	100%	100%	100%	100%
Maloney		0%	100%	100%	100%	100%
Maloney		0%	100%	100%	100%	100%
Maloney		0%	100%	100%	100%	100%
Maloney		0%	0%	0%	100%	0%
Maloney		0%	100%	100%	100%	100%
Maloney		100%	100%	100%	100%	100%
Maloney		100%	100%	100%	100%	100%
Maloney		100%	100%	100%	100%	100%
Total		40	24	24	20	40

- Common Formative Assessments.
 - Review/modify questions.
 - Review assessment results.
- Shared assessment data sheets.
- Discuss appropriate student placement.

Name: _____ # : _____

Fractions Assessment

I can show fractions as equal parts of a whole.

1. Which model shows $\frac{1}{6}$ of the whole figure shaded?

A.

B.

C.

D.

2. Shade $\frac{3}{6}$ of the whole model.

I can show fractions on a number line.

3. Place $\frac{1}{4}$ in the correct location on the number line.

4. Select the number line that correctly shows $\frac{3}{4}$.

How will we respond when some students do not learn it?

- ▣ Methods for providing interventions.
 - Small group pull out.
 - Centers in classrooms.
- ▣ Walk to Read and Walk to Math placement.
 - Students grouped based on current levels.
- ▣ Create/Review intervention assessment.

Name _____

1.OA.7the equals sign: Intervention assessment

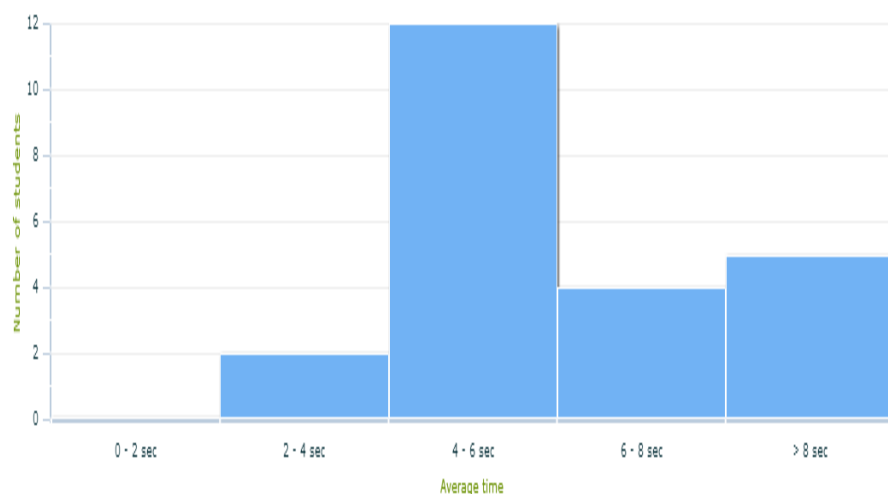
$7+3 = 12$	$7+3 = 6+ 4$	$10 = 7 - 5$
True or False	True or False	True or False
$11 + 1 = 12$	$10 = 5 + 5$	$1 + 5 = 7 - 3$
True or False	True or False	True or False

Last Name	First Name	GE	Teacher	VTR Teacher	RI WTR Te	Nov ORF	Errors
	Kaeden	1.3	Hartley	Hartley	Botz	34	9
	Kessler	1.1	Sergis		Botz	34	13
	Tyler	1.6	Botz	Sergis	Botz	32	6
	Landon	1.2	Botz	Sergis	Botz	32	5
	Kaile	1.3	Hartley	Botz	Botz	31	7
	Brennan	1	Schuman	Sergis	Botz	30	
	Abbey	1.3	Wynn/McCar	Botz	Botz	30	6
	Aaron	1.3	Wynn/McCar	Jones	Botz	30	5
	Kennedy	1.2	Sergis	Sergis	Botz	29	6
	Narina	no pass	Sergis	Jones	Botz	29	2
	Carter	no pass	Sergis	Hartley	Botz	28	4
	Jocelyn	1.2	Wynn/McCar	Sergis	Botz	27	5
	Owen	1	Sergis	Hatch	Botz	26	7
	Scott	1.3	Wynn/McCar	Jones	Botz	26	6
	Sarah	1.1	Wynn/McCar	Hartley	Botz	25	9
	Brynn	1.1	Wynn/McCar	Hatch	Botz	25	7
	Siena		Botz	Botz	Botz	24	5
	Madison	1.3	Botz	Jones	Botz	24	5
	Enrique	1.1	Wynn/McCar	Botz	Hartley	23	5
	Avalina	1.2	Botz	Botz	Hartley	22	6
	Kole	1.1	Sergis	Hatch	Hartley	22	7
	Rose	1.2	Sergis	Sergis	Hartley	22	8
	Giselle		Botz	Hatch	Hartley	21	10
	Gavin	0.9	Wynn/McCar	Botz	Hartley	21	9
	Aiden	1.2	Wynn/McCar	Botz	Hartley	21	5
	Zachary	1.1	Sergis	Botz	Hartley	21	8
	Ellie	no pass	Sergis	Botz	Hartley	21	5
	Isabel		Botz	Hartley	Hartley	20	7
	Matthew		Botz	Hartley	Hartley	20	6

How can we extend and enrich the learning for students who have demonstrated proficiency?

- ▣ Walk to Read and Walk to Math placement.
 - ▣ Students grouped based on current levels.
- ▣ Shared practice and examples of higher level activities.
- ▣ Discussion of enrichment tools available.

Average time per problem



cy

Average time per problem	Total time	Problems attempted	Percentage correct
4 sec	0 hr 2 min	28	100%
5 sec	0 hr 7 min	78	99%
5 sec	0 hr 11 min	119	98%
8 sec	0 hr 13 min	90	98%
8 sec	0 hr 19 min	136	88%
4 sec	0 hr 2 min	28	100%
7 sec	0 hr 12 min	104	94%
16 sec	0 hr 37 min	135	89%
4 sec	0 hr 2 min	28	100%
5 sec	0 hr 7 min	84	100%
7 sec	0 hr 8 min	60	96%

Advantages Since PLC Implementation

- ▣ Continuity and consistency within teams and across grade levels.
- ▣ Sense of togetherness.
- ▣ More accountability and increased student achievement.
- ▣ Allows time to share successes and solve problems collaboratively.

Questions?

REVENUES FROM LOCAL, STATE AND FEDERAL SOURCES

Revenues from Discretionary Local Taxes

As necessary, the district shall consider the necessity of requesting voter approval of an excess property tax to be collected in the year following voter approval. Such a levy, if any, shall be in that amount permitted by law which the board determines necessary to provide educational services beyond those provided by state appropriations. The board shall solicit advice from staff and patrons prior to establishing the amount and purposes of the special levy request. The special levy being collected shall be presented by program and expenditure in the district's annual descriptive guide for patrons as required by law.

Revenues from State Resources

The responsibility for financing public education in Washington falls primarily upon the state.

Revenues from the Federal Government

The objective of the board is to provide the best educational services possible within resources available to the district. Federal grants and programs may provide helpful financial resources towards pursuing that objective.

The board agrees to comply with all federal and state requirements that may be a condition to receipt of federal funds including, but not limited to:

- A. Maintenance of fiscal records which show the receipt and disposition of federal funds;
- B. Provision for eligible private school students to participate in programs and/or services designed for the educationally disadvantaged as well as other programs which are supported by ECIA funds;
- C. Provision for testing to identify target students as well as to measure program results; and
- D. Provision for staff and parent involvement, program planning, budget development and program evaluation.

The district agrees to comply with Title 1 requirements pertaining to the implementation of internal controls for travel, contracted services, training, and capital outlay purchases and expenditures.

The district further assures that a district-wide salary schedule is in effect and that the staff is assigned equitably among schools. Instructional material shall also be distributed equitably among all schools. The board grants authority to directors and staff to participate in the development of any state and/or federal regulations deemed to be necessary for the implementation of federally funded programs.

Federal Impact Funds (Native American)

Federal impact funds are provided to the district as a supplement to taxes and other revenue sources. State-appropriated funds and local taxes contribute to the development and implementation of a basic education program for all students enrolled in the district. The district gives assurance that tribes and parents of Native American children will be afforded the opportunity to make recommendations regarding the needs of their children and will be involved in the planning and development of the basic education program including those educational programs and services to be provided with P.L. 81-874 funds. Native American students shall have the equal opportunity to participate in the district's program with other students.

Recognizing that the board is the ultimate authority in defining the educational program of the district, the superintendent shall establish procedures to assure the involvement of the tribe and parents of Native American students in the development of the basic education program including the education services to be provided with P.L. 81-874 funds and the participation of Native American children in the program on an equal basis. The superintendent will provide opportunities for parents and members of the tribal council to suggest if any policy and/or procedure changes as well as program changes are necessary to better serve the needs of the Native American students.

Legal References:	RCW 28A.300.070	Receipt of federal funds for school purposes--Superintendent of public instruction to administer
	28A.150.230	Basic Education Act--District school directors as accountable for proper operation of district—Scope—Responsibilities--Publication of guide
	28A.150.250	Annual basic education allocation of funds according to average FTE student enrollment--Student/ teacher ratio standard
	28A.150.370	Additional programs for which legislative appropriations must or may be made
	84.52.0531	Levies by school districts--Maximum dollar amount for maintenance and operation support--Restrictions--Maximum levy percentage--Levy reduction funds--Rules. (Exp 1-1-08)
	WAC 392-163	Special Service Program--Title I Grants for Improving LEA Basic Programs
	180-16	State Support of Public Schools
	Public Law 81-874	
	34 CFR 223	Special Aid Provisions for Local Educational Agencies

REVENUES FROM LOCAL, STATE AND FEDERAL SOURCES

Internal Controls—Title 1

The following controls are established for the Title 1 program:

- A. All Title 1 funded purchases and expenditures shall be directly related to allowable Title 1 activities and services that are necessary to effectively carry out the objectives of the current program, and for the benefit of eligible participants.
- B. Title 1 purchases and expenditures shall be restricted to those incurred by persons with direct Title 1 duties and responsibilities and/or which benefit only eligible Title 1 participants.
- C. Title 1 funded inservice training shall be directly related to specific Title 1 program activities and provided only to persons with Title 1 program responsibilities and duties.
- D. Appropriate documentation of all Title 1 purchases and expenditures incurred shall be maintained for accountability and audit purposes.

Parent Involvement – Title 1

Each school offering Title 1 programs shall comply with federal and state requirements by providing for:

- A. Written parent notification of the selection of students for services;
- B. Accessibility to parents of specific instructional objectives for their children;
- C. Periodic student progress reports to parents;
- D. Accessibility of support materials to be utilized in the home when requested by parents;
- E. Parent participation in the instructional program on a volunteer basis; and
- F. Parent input and recommendations in program planning and modification.

Federal Impact Funds (Native American)

The district shall disseminate material related to the P.L.81-874 application, program evaluations and program plans and/or changes to parents of Native American children and tribal officials no later than eight weeks before the application is submitted. The district will seek input from tribal officials and the parents of Native American children regarding:

- A. The participation of Native American children in the district's education program on an equal basis;
- B. Their views regarding the P.L. 81-874 application, program evaluation and program plans; and
- C. Their recommendations regarding the needs of Native American children, the ways tribal leaders and parents can assist their children to achieve the benefits of P.L. 81-874 programs, and the overall education program and parental participation allowed.

At the board meeting immediately preceding the submission of the P.L. 81-874 application, the board will review the application and input provided by tribal officials and the parents of Native American children. Notice of the meeting location, time and topics related to the district's P.L. 81-874 application shall be published.

The district shall form a parent-teacher task force to involve tribal officials and parents of Native American children in the planning and development of education programs assisted with the district's P.L. 81-874 funds. The task force shall also assess the efficacy of the district's efforts to obtain meaningful input from tribal officials and parents of Native American children, and the responsiveness of the district in modifying its policies and procedures following input. The task force shall report its findings and recommendations to the board at a public hearing at least once per year.

Following a conclusion by the board that such an action is necessary, the district shall form an ad hoc task force to recommend to the board a modified educational program to ensure the equal participation of Native American children. The task force shall report its recommendations to the board in a public hearing.

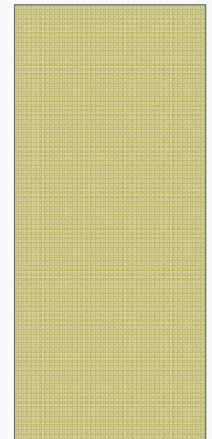
The district shall also conduct planning and information sessions during the year. All parents of Native American students and representatives of the tribal council shall be invited to attend these meetings. At these sessions, the district may:

- A. Review the annual descriptive guide of the district;
- B. Explain how Native American students gain access to and are served by the district's education programs, and how educational programs are modified to ensure equal opportunity and participation by Native American students;
- C. Review the identified needs of the district with particular attention directed towards assessing the needs of Native American students; and
- D. Discuss proposed programs and services, as recommended by the task force, which are being considered to satisfy the stated needs and the extent to which Native American students are expected to be served.

Parents of Native American students and members of the tribal council will be advised of the Federal Impact Funds policy and procedure. Expressions of concerns and/or suggestions regarding the policies/procedures of the district are welcome. Any parent of Native American students or a member of the council may file a complaint regarding the application of P.L.81-874 funds with the district. Said complaint should be submitted in writing to the superintendent of schools. Any complaint not satisfactorily resolved may be submitted in writing to the board of directors of the district. The board may elect to respond in writing to the complaint or hold an informal hearing with the complainant(s). A decision will be rendered within twenty (20) working days following submittal of the complaint to the board.

AUBURN SCHOOL DISTRICT

874 REPORT
AND NATIVE AMERICAN
STUDENTS



WHAT IS 874?

Section 8003 Grant

Help local school districts that educate federally connected children.

- These may be the children
 - of members of the uniformed services,
 - children who reside on Indian lands,
 - children who reside on Federal property or in federally subsidized low-rent housing,
 - and children whose parents work on Federal property.

GRANT ELIGIBILITY

- In general, to be eligible for assistance a local school district must
 - Educate at least 400 such children in average daily attendance

or the federally connected children must

- Make up at least 3 percent of the school district's total average daily attendance.

IMPACT AID IN AUBURN

Children with disabilities who:

- (1) Reside on eligible federal property and have a parent on active duty in the uniformed services of the United States; or**
- (2) Reside on eligible federal property with a parent who is both an accredited foreign government official and a foreign military officer; or**
- (3) Reside on eligible Indian lands**

IMPACT AID IN AUBURN

**Children with disabilities who DO NOT RESIDE ON
FEDERAL PROPERTY BUT:**

- (1) Have a parent on active duty in the uniformed
services of the United States; or**
- (2) Have a parent who is both an accredited foreign
government official and a foreign military officer**

IMPACT AID IN AUBURN

Children who:

- (1) Reside on federal property with a parent employed on eligible federal property located at least partly within the school district; or**
- (2) Reside on eligible federal property and have a parent on active duty in the uniformed services of the United States; or**
- (3) Reside on eligible federal property and have a parent who is both an accredited foreign government official and a foreign military officer; or**
- (4) Reside on eligible Indian lands**

IMPACT AID IN AUBURN

Children who reside on eligible federal property but whose parents are not employed on federal property

- ✓ **Burndale Homes**
- ✓ **Firwood Circle Apts.**
- ✓ **Green River Homes**

IMPACT AID IN AUBURN

Children who do not reside on federal property but:

- (1) Reside with a parent employed on federal property; or**
- (2) Have a parent on active duty in the uniformed services of the United States; or**
- (3) Have a parent who is both an accredited foreign government official and a foreign military officer**

IMPACT AID TABLES

	2010-2011	2011-2012	2012-2013	2013-2014
Table 1 – CWD reside on federal land	52	31	23	85
Table 2 – CWD parent on active duty	5	5	5	9
Table 3 – Live on Indian Land	125	127	146	122
Table 4 – Live on Federal Property	215	*132	*122	173
Table 5 – Parent works on Federal Property or Active Military	297	320	386	360
Total Federally Connected	694	615	682	749
Tables 3, 4, 5	637	579	620	655

*The drop in number in 2011-2012 reflects the massive renovation at Green River Homes.

IMPACT AID TABLES

	Categories	*2011-2012	2012-2013	2013-2014	2014-2015
Table 1 – CWD reside on federal land					
Table 2 – CWD parent on active duty	D	5	5	5	9
Table 3 – Live on Indian Land	C	177	158	181	153
Table 4 – Live on Federal Property	E	214	82	73	173
Table 5 – Parent works on Federal Property or Active Military	[D]	88	131	123	102
To be ELIGIBLE (WA State factor) X 0.937		484	376	386	436
Categories C, D, E Needs to be more than 427		*453	352	361	409

LAST ELIGIBLE IN FY 2012

**CONGRESS CREATED CATEGORIES OF CHILDREN,
WEIGHTS AND THRESHOLDS TO DETERMINE ACTUAL
IMPACT IN CATEGORIES.**

IMPACT AID FUNDS IN AUBURN

- Funds from Impact Aid, Title VII and the Muckleshoot Tribal Grant are used to support the Native American Education Program
 - Native American Specialists located at
 - Chinook,
 - Olympic, and
 - Auburn High School
 - Virginia Cross Native Education Center

IMPACT AID FUNDS IN AUBURN

Mrs. Scott supervises mural project



Mr. Wilson, OLY teacher,
MIT funded

Olympic Middle School

So proud of our Native athletes! There were at least 8 Olympic Native American Program boys that turned out for football this year: Freedom Bill, Marshall Nogueira, Heleo Moses, Dakota Gillis, Santana Woodard, AJ Smitskin, Matalo Crouse, and Dale Williams.



We welcome Dave Wilson, Lummi carver, to our program.



Jeanne Scott—more than 7 years in the program

On October 31, 72 Olympic Middle School Native students were invited to the September and October Attendance Awards ceremony. 41 students gathered in the Native program room. 37 students received certificates for good attendance and browsed the gift table for a gift of their choice. All students had a pizza and juice lunch thanks to the attendance component of the MIT grant. Principal Jason Hill came and ASD staff Mike Weibel and Native Ed Coordinator Robin Pratt came to help honor and welcome students.



AUBURN SCHOOL DISTRICT NATIVE AMERICAN PARENT COMMITTEE

- Meets regularly October through June
- Purpose
 - Review academic achievement and performance
 - Increase Parent Involvement
 - Address Student Concerns
 - Parent Committee:
 - Required for Title VII and Impact Aid



NATIVE AMERICAN OUTREACH

MIT Skopabsh Pow Wow, August 2014



NATIVE AMERICAN PARENT MEETINGS

- Programs inspired by parent requests: Culture, College and Career Readiness, Community

NATIVE AMERICAN EDUCATION STUDENT MEETING LEADERSHIP AND EMPOWERMENT SERIES

We had a fabulous gathering of 30 students in our Native Achievement Center at Auburn High School. Guest Speakers **Alexandra Cruz** and **Sean Daniels** shared some words of inspiration and support to 30 students, expressing why MIT is so supportive of their education.

Other guests including Heidi Erdmann (AHS Counselor) and Matilda from Muckleshoot youth services were present, in response to the school safety concerns and losses in our Native communities. Students heard about various forms of accessing help and/or support.

OCTOBER 30, 2014 3RD PER - 10:08-11:03 ROOM 336



2014 Salmon Homecoming

September 18, 2014



Over 60 students, including 55 Fourth grade students from two elementary schools and 10 HS chaperones attended the Salmon Homecoming Alliance "School Days" event on the Seattle waterfront.

Selena Sweet (Snoqualmie), AHS student chaperone, and 4 students from Gildo Rey get acquainted.



Auburn School District
Native American Education Program

College & Career Readiness

Monday
October 20, 2014
6th Period
Room 336 (AHS)
Parent & Community Information Session
October 21, 2014
5:00-6:30 pm
Auburn High School
Room 336
Light Snacks

University of California, Berkeley
THE NATIVE AMERICAN COMMUNITY WELCOMES
Your Application This November For Fall 2015
Apply Online At: admissions.berkeley.edu

AHS Students notified by flyers
ASD secondary parents notified by email
Facebook posts

- Native American Studies
- Native American Theme Housing
- Native American Library
- Native American Recruitment & Retention Center
- Intertribal Student Council
- Multicultural Student Development

Students listen to Bridget speak about choosing a college and a major, how to be ready for college, how to apply for financial aid. UC Berkeley has over 100 majors, is 100 years old, is one of the public research schools, ranks first in graduate programs & is the most popular of the UC schools.

REQUEST AND RECOMMENDATION:

- It is requested that the Indian Policy and Procedures are reviewed.
- It is recommended that the deputy superintendent for business and operations be authorized to apply for and receive Public Law 874 federal funds for the 2015-2016 school year.

2014-2015 Professional Development to Support the Transition to Common Core State Standards

GRADE SPAN	NUMBER OF PARTICIPANTS	PRESENTER/S	COURSE NAME	DATE OF FIRST SESSION	DATE OF LAST SESSION
PK	18	Erin Scott	Pre-Kindergarten Early Literacy Cohort 6 Program	8/26/14	5/12/15
PK	23	Tami Petrina	Linking Prek to Kindergarten Common Core	8/27/14	8/27/14
PK-K	25	Laurie Bulson, Peter Lamb	Engaging Strategies for Developing Academic Vocabulary in Preschool	9/23/14	3/31/15
PK-K	17	Heidi Harris	Promising Practices	12/5/14	12/5/14
K	56	LaWanda Cartwright	Kindergarten In-Service 2014 -2015	9/23/14	6/9/15
K	56	Robin Logan	Grade Level PLC - ELA - Grade K	10/7/14	3/19/15
1st	55	Robin Logan	Grade Level PLC - ELA - Grade 1	9/30/14	6/2/15
2nd	56	Robin Logan	Grade Level PLC - ELA - Grade 2	10/1/14	6/4/15
3rd	46	Robin Logan	Grade Level PLC - ELA - Grade 3	10/9/14	6/3/15
4th	46	Robin Logan	Grade Level PLC - ELA - Grade 4	10/8/14	3/18/15
5th	43	Robin Logan	Grade Level PLC - ELA - Grade 5	10/15/14	3/17/15
K-5	20	Lisa Horn, Linda Campbell, Debra Gary	Teaching CCSS Reading Targets, Blended Learning with Core Clicks, and Bully Prevention Training	8/25/14	8/25/14
K-5	17	Ben Moenter, John Aiken	ELA/Reading/Vocab/PBIS	8/26/14	8/26/14
K-5	20	Lisa Horn, Linda Campbell, Debra Gary	Creating Close Reading, Using Core Clicks, and Primary Math and Reading Standards	8/26/14	8/26/14
K-5	22	Anne Gayman	CCSS	8/26/14	8/26/14
K-5	17	Tom Dudley, Julie Gragg	Team Building, PBIS, SIP, and CCSS	8/26/14	8/26/14
K-5	21	Cory Ekstrom	CCSS/SBAC	8/26/14	8/28/14
K-5	28	Colleen Barlow, Dan St. Mary, Lyn Hess, Kim McKeough, Kimberly Wynn, Jen Swanson, Stephanie Knapp, Dorothy Luke, Kelly Maloney	2012-13 Implementing Reading & Math SIP Strategies & Common Core State Standards	8/27/14	6/1/15
K-5	20	Lisa Horn	ELA CCSS Transition Support	8/28/14	8/28/14
K-5	17	Brendan Jeffreys, John Aiken	Math Fact Fluency	8/28/14	8/28/14
K-5	20	Brendan Jeffreys, Linda Campbell, Debra Gary	Using ASD CCSS Math Website, Making Google Drive Folders, and Chromebook Resources	8/28/14	8/28/14
K-5	20	Jennifer Davidson and Staff	Grade Level Meetings, Reading and Math Data Look	9/16/14	9/29/14
K-5	21	Pauline Thomas, Cory Ekstrom	CCSS/SBAC/SIP Work	9/23/14	11/12/14

GRADE SPAN	NUMBER OF PARTICIPANTS	PRESENTER/S	COURSE NAME	DATE OF FIRST SESSION	DATE OF LAST SESSION
K-5	24	Sally Colburn	CCSS with SBAC aligned with SIP and using DATA	10/2/14	6/11/15
K-5	20	Lisa Horn	Developing and Implementing CCSS Aligned Material	10/10/14	10/10/14
K-5	21	Pauline Thomas, Cory Ekstrom	Performance Assessment Work	10/14/14	5/15/15
K-5	21	Pauline Thomas, Cory Ekstrom	CCSS/SBAC/SIP Work	1/27/15	6/10/15
K-5	302	Brendan Jeffreys	Elem Math Grade Level PLC	9/30/14	6/4/15
3-5	52	Kim Sutton	10 Block for Math Fact Fluency Creative Mathematics	8/4/14	8/6/14
3-5	17	Brendan Jeffreys	Elementary Item Writing (Math)	8/11/14	8/15/14
3-5	20	Lisa Horn	ELA CCSS Transition Support	10/10/14	10/10/14
3-5	67	Heime Perez, Heidi Harris	Step Up to Writing	1/17/15	1/17/15
K-8	502	Heidi Harris and Various Presenters	CCSS Transition Support ELEMENTARY/MIDDLE SCHOOL INSERVICE (ALL)	8/27/14	8/27/14
3-8	32	Brendan Jeffreys	Customized SBAC Aligned Software	10/15/14	10/15/14
K-9	142	Anita Archer	Anita Archer / Explicit Instruction	7/28/14	8/1/14
6-8	15	Brendan Jeffreys	Middle School Item Writing (Math)	8/11/14	8/15/14
6-8	47	Jill Barrett, Brandy Englander	Common Core Cycle 1	8/25/14	8/25/14
6-8	47	Jason Hill	Champion Teachers in Leading Instruction Part 2	8/28/14	8/28/14
6-8	4	Julie DeBolt	ELL MS PLC	9/9/14	6/2/15
6-8	21	Heidi Harris	Instructional Specialists/Coaches and ELA Team Leads	9/22/14	4/1/15
6-8	30	Isaiah Johnson, Pam Cavenee, Paula Dragseth	SIOP Content Team Training	9/30/14	4/15/15
6-8	24	Heidi Harris	Middle School Content Team Meeting for Team Leads	10/1/14	4/21/15
6-8	14	Heidi Harris	Middle School Content Team Meeting for Social Studies	10/3/14	4/24/15
6-8	15	Brendan Jeffreys	Middle School Content Team Meetings for Science	10/6/14	4/27/15
6-8	13	Heidi Harris	Middle School Content Team Meeting for Electives	10/20/14	5/1/15
6-8	47	Karri Millican	Common CORE Inquiry Cycle 1	10/28/14	10/30/14
6-8	21	Heidi Harris	Middle School Content Team Meeting for ELA	11/24/14	6/1/15
6-8	12	Jennifer Willson	Common CORE Quarter 2 - ELA	1/6/15	1/6/15
6-8	11	Jennifer Willson	Common CORE Skill Practice - Science	1/7/15	5/6/15
6-8	13	Jennifer Willson	Common CORE Skill Practice - Social Studies	1/7/15	5/6/15
6-8	15	Jennifer Willson	Common CORE Skill Practice - Math	1/13/15	5/12/15
6-8	13	Jennifer Willson	Common CORE Skill Practice - ELA	1/13/15	5/12/15
6-8	10	Jennifer Willson	Common CORE Skill Practice - Electives	1/14/15	5/13/15

GRADE SPAN	NUMBER OF PARTICIPANTS	PRESENTER/S	COURSE NAME	DATE OF FIRST SESSION	DATE OF LAST SESSION
6-8	6	Jennifer Willson	Common CORE Skill Practice - Reading	1/14/15	5/13/15
6-8	48	Brendan Jeffreys	MS Content Team Meetings	10/23/14	6/5/15
6-12	40	Laurie M. Flynn (SpringBoard)	SpringBoard Quick Start Teacher Institute - Laurie Flynn	9/15/14	9/16/14
6-12	40	Maria Vasiliou, Corrie Carstens	Springboard Quick Start Training	9/17/14	9/19/14
9-12	172	LeAnn Nickelsen	Title Inservice with LeAnn Nickelsen	8/25/14	8/25/14
9-12	162	Heidi Harris, Patrick Mulick, Terri Herren	AMHS Title 1 School, CC and Reading Strategies	8/26/14	8/26/14
9-12	421	Varied Presenters	High School Learning Improvement Day 2014 HIGH SCHOOL INSERVICE CLOCK HOURS	8/27/14	8/27/14
9-12	6	Julie DeBolt	ELL HS PLC	9/9/14	6/2/15
9-12	16	Tom McDermott	ELA Common Core Standard Materials Pilot	10/9/14	5/14/15
9-12	12	Tom McDermott	Houghton-Mifflin-Harcourt Collections Training Part 1	11/20/14	11/20/14
9-12	12	Tom McDermott	Houghton-Mifflin-Harcourt Collections Training Part 2	1/8/15	1/8/15
K-12	25	Julie DeBolt	ELL Staff Training for 14-15 school year	8/15/14	8/15/14
K-12	25	Heidi Harris	Elementary/Secondary Title/LAP Specialists Meetings	9/29/14	6/8/15
K-12	30	Julie DeBolt	SIOP - Making Content Comprehensible for English Language Learners	11/12/14	11/14/14
K-12	62	Heidi Harris / Julie DeBolt / Brendan Jeffreys	SBAC / CCSS baseline presentation to the school board	10/27/14	10/27/14
K-12	27	Varied Presenters	Washington Research Association Conference	12/10/14	12/12/14
Total Trained	3380				

PK = Pre-Kindergarten

K = Kindergarten

1. Certificated and Classified Personnel Report

Recommendation: That the board approve the attached report.

a. Rod Luke, associate superintendent of technology and learning, and Doug Gonzales, coordinator of classroom learning systems and application support specialist, request permission to travel to Palo Alto, California, Monday to Wednesday, February 9-11. The purpose of the trip is to participate in the Renaissance Learning/Google/Samsung Symposium for educational leadership. Lodging will be at the Four Seasons hotel, meals will be at local restaurants, and travel will be by airplane. Lodging and most meal expenses will be paid by Renaissance Learning and travel expenses will be paid by district funds. No substitutes will be needed.

b. Karen Arnzen and Vicki Jensen, transportation coordinator and router, respectively, request permission to travel to Atlanta, Georgia, Saturday to Thursday, May 2-7. The purpose of the trip is to attend the VersaTrans-Tyler Connect 2015 Conference. Lodging will be at a local hotel, meals will be at local restaurants, and travel will be by airplane. All expenses will be paid by professional development funds. No substitutes will be needed.

Recommendation: That the above trips be approved as requested.

PERSONNEL REPORT - CERTIFICATED

Classification	Job Type	Building	Name	Start Date	Hours	Rate of Pay	Comment
Curriculum-Noncurriculum							
CERTIFICATED	AHS STANDARDS BASED	AHS	BAILEY, WHITNEY	1/15/2015	5	\$39.45	
CERTIFICATED	AHS STANDARDS BASED	AHS	CALLERO, ANTHONY	1/15/2015	5	\$50.93	
CERTIFICATED	AHS STANDARDS BASED	AHS	CAPPS, JASON	1/15/2015	5	\$50.93	
CERTIFICATED	AHS STANDARDS BASED	AHS	COCKCROFT, ELSBETH	1/15/2015	10	\$47.22	
CERTIFICATED	AHS STANDARDS BASED	AHS	CONNELLY, ERICKA	1/15/2015	10	\$38.29	
CERTIFICATED	AHS STANDARDS BASED	AHS	COOKE, JENNIFER	1/15/2015	5	\$33.38	
CERTIFICATED	AHS STANDARDS BASED	AHS	HANSEN, JESSICA	1/15/2015	5	\$41.90	
CERTIFICATED	AHS STANDARDS BASED	AHS	KELLER, BRIAN	1/15/2015	5	\$48.77	
CERTIFICATED	AHS STANDARDS BASED	AHS	MCLUEN, TERESA	1/15/2015	5	\$37.30	
CERTIFICATED	AHS STANDARDS BASED	AHS	PAUSTIAN, ANTHONY	1/15/2015	5	\$27.73	
CERTIFICATED	AHS STANDARDS BASED	AHS	PRICE, JON	1/15/2015	5	\$50.93	
CERTIFICATED	AHS STANDARDS BASED	AHS	VANDERPUIY, ABRAHAM	1/15/2015	5	\$47.22	
CERTIFICATED	AHS STANDARDS BASED	AHS	WAY, LACEY	1/15/2015	5	\$39.45	
CERTIFICATED	AP COMP SCIENCE COACH	AMHS	GIFFORD, ALVIN	9/3/2014		STIPEND \$1666.67	
CERTIFICATED	ATLA MINI-GRANT	EH	HUPPERTEN, MICHELLE	12/22/2014	12	\$50.93	
CERTIFICATED	ATLA MINI-GRANT	CH	LAFAYETTE, MELISSA	1/7/2015	12	\$36.64	
CERTIFICATED	ATLA MINI-GRANT	AMHS	LEE, JESSICA	1/7/2015	12	\$40.66	
CERTIFICATED	CAMP AUBURN	AJ	CAPPONI-GLIDEWELL, DEBBI	6/2/2015		STIPEND \$409	
CERTIFICATED	CAMP AUBURN	AJ	HOWELL, CHRISTOPHER	6/2/2015		STIPEND \$409	
CERTIFICATED	CAMP AUBURN	AJ	KEMP, BRIAN	6/2/2015		STIPEND \$409	
CERTIFICATED	CLASSROOM MOVE	TP	MISCHKE, EMILY	1/12/2015	4	\$50.93	
CERTIFICATED	CTE CURR REVIEW	AHS	SARR, DIANE	9/29/2014	12	\$34.22	
CERTIFICATED	CURR REV MEETINGS	ARHS	SALOY, DAMIAH	10/23/2014	3	\$34.19	
CERTIFICATED	ELA/NGSS ALIGNMENT DOC	RAIN	DIEBAG, JAMES	9/3/2014	9	\$37.14	
CERTIFICATED	EXP. ELECTION PROCESS	AMHS	THOMAS, JANA	1/13/2015	4	\$50.93	
CERTIFICATED	EXT. DAY READ PROG	HZ	CARTER, AMBER	1/26/2015	24	\$43.17	
CERTIFICATED	EXT. DAY READ PROG	HZ	CARTER, AMBER	12/1/2014	24	\$43.17	
CERTIFICATED	GRADE K-2 WINTER ELA MTGS	PIO	HUPPERTEN, MICHELLE	12/11/2014	15	\$50.93	
CERTIFICATED	IEP/TRANS MTGS	ANNEX	LLERA, KANDICE	12/30/2014	1.5	\$34.63	
CERTIFICATED	INVOLUNTARY ROOM MOVE	RAIN	GREEN, BETH	1/5/2015	14	\$49.93	
CERTIFICATED	LA CURR	RAIN	BRENNAN, TRACY	9/1/2014	14	\$39.45	
CERTIFICATED	LA CURR	RAIN	WILSON, LISA	9/1/2014	14	\$50.93	
CERTIFICATED	LA CURR-CALENDAR WORK	RAIN	BRENNAN, TRACY	12/1/2014	6	\$39.45	
CERTIFICATED	LA CURR-CALENDAR WORK	RAIN	WILSON, LISA	12/1/2014	6	\$50.93	
CERTIFICATED	LANG ARTS CURR	CAS	DOZIER, ALETHIA	9/1/2014	14	\$37.12	
CERTIFICATED	LANG ARTS CURR	CAS	SLEETH, AMY	9/1/2014	14	\$37.91	
CERTIFICATED	MUSIC DIREC/CONCERTS	ALP	HENRY, MILENE	12/18/2014	10	\$50.93	
CERTIFICATED	OPEN DOOR PRESENTATION	ANNEX	FRAZIER, LESLIE	12/29/2014	3	\$47.22	
CERTIFICATED	PARENT SUPP FOR HIGH CAP	AHS	KIILSGAARD, LESLIE	1/8/2015	20	\$41.90	
CERTIFICATED	PARENT SUPP FOR HIGH CAP	AHS	MORROW, JONATHAN	1/8/2015	20	\$43.17	
CERTIFICATED	PARENT SUPP FOR HIGH CAP	DS	MOYNIHAN, DAVID	1/8/2015	20	\$41.27	
CERTIFICATED	PARENT SUPP FOR HIGH CAP	CH	RODRIGUEZ, JESSE	1/8/2015	20	\$50.93	
CERTIFICATED	PARENT SUPP FOR HIGH CAP	EH	SAMUELSON, DAVID	1/8/2015	20	\$43.17	
CERTIFICATED	PLC HOURS	WA	BULAWA, HEATHER	9/23/2014	25	\$38.88	
CERTIFICATED	PSED-P-5 MATH ED SUMM	CH	BLOUNT, DENITA	10/25/2014	5.5	\$47.22	
CERTIFICATED	PSED-P-5 MATH ED SUMM	ANNEX	BUDZYNSKI, NICOLE	10/25/2014	5.5	\$35.57	
CERTIFICATED	PSED-P-5 MATH ED SUMM	AJ	HARRIS, MARTIN	10/25/2014	5.5	\$33.82	
CERTIFICATED	PSED-P-5 MATH ED SUMM	LH	LEAF-DENT, KATHERINE	10/25/2014	5.5	\$28.51	
CERTIFICATED	PSED-P-5 MATH ED SUMM	LH	ST MARY, SARAH	10/25/2014	5.5	\$34.73	
CERTIFICATED	ROOM SET-UP	AJ	COLBURN, DEANNA	12/19/2014	14	\$19.43	
CERTIFICATED	SIP PREP/PRES FOR AMHS	AMHS	HAMMER, EVELYN	1/9/2015	3	\$50.93	
CERTIFICATED	SIP PREP/PRES FOR AMHS	AMHS	O'BRIEN, LEAHMARIE	1/9/2015	3	\$45.83	
CERTIFICATED	TITLE 1 PROG MGMT	DSL	HAGEDORN, BARBARA	9/10/2014	100	\$50.93	
CERTIFICATED	WRITING WORKSHOP	EH	ADAMS, VENDALYN	12/17/2014	2	\$48.67	
CERTIFICATED	WRITING WORKSHOP	EH	AKINS, LAURE	12/17/2014	2	\$31.78	
CERTIFICATED	WRITING WORKSHOP	TP	ANDERSEN, STEPHANIE	12/17/2014	2	\$50.93	

CERTIFICATED	WRITING WORKSHOP	WA	ANDERSON, KATIE	12/17/2014	2	\$43.17
CERTIFICATED	WRITING WORKSHOP	DS	BAEHR, AMANDA	12/17/2014	2	\$40.06
CERTIFICATED	WRITING WORKSHOP	ALP	BECKETT, MARYELLEN	12/17/2014	2	\$50.93
CERTIFICATED	WRITING WORKSHOP	ALP	BOHMAN, SANDRA	12/17/2014	2	\$45.79
CERTIFICATED	WRITING WORKSHOP	ALP	BURTIS, JAMISON	12/17/2014	2	\$28.48
CERTIFICATED	WRITING WORKSHOP	LH	BUTLER, REGINA	12/17/2014	2	\$48.04
CERTIFICATED	WRITING WORKSHOP	IL	CALLERO, NIKKI	12/17/2014	2	\$33.82
CERTIFICATED	WRITING WORKSHOP	PIO	CAMPBELL, LINDA	12/17/2014	2	\$50.93
CERTIFICATED	WRITING WORKSHOP	EH	CARROLL, LEAH	12/17/2014	2	\$49.93
CERTIFICATED	WRITING WORKSHOP	HZ	CARTER, AMBER	12/17/2014	2	\$43.17
CERTIFICATED	WRITING WORKSHOP	AJ	CASTRO, JENNIFER	12/17/2014	2	\$32.76
CERTIFICATED	WRITING WORKSHOP	HZ	CAVALIERI, LISA	12/17/2014	2	\$43.75
CERTIFICATED	WRITING WORKSHOP	ALP	CHIPPS-FREEMAN, SUZAN	12/17/2014	2	\$50.93
CERTIFICATED	WRITING WORKSHOP	TP	CLOUGH, MICHELLE	12/17/2014	2	\$28.09
CERTIFICATED	WRITING WORKSHOP	LH	DANIELS, TREENA	12/17/2014	2	\$50.93
CERTIFICATED	WRITING WORKSHOP	PIO	DIEBAG, MELINDA	12/17/2014	2	\$27.02
CERTIFICATED	WRITING WORKSHOP	AJ	ELLIOTT, NAOMI	12/17/2014	2	\$42.54
CERTIFICATED	WRITING WORKSHOP	GR	FITZGERALD, WILLIAM	12/17/2014	2	\$28.90
CERTIFICATED	WRITING WORKSHOP	LH	FOSS, KIMBERLY	12/17/2014	2	\$45.79
CERTIFICATED	WRITING WORKSHOP	GR	FOUQUET, ALLISON	12/17/2014	2	\$33.46
CERTIFICATED	WRITING WORKSHOP	AJ	GARDNER, MARIANE	12/17/2014	2	\$50.93
CERTIFICATED	WRITING WORKSHOP	LH	GOLIFF, STEPHEN	12/17/2014	2	\$50.93
CERTIFICATED	WRITING WORKSHOP	TP	GRANT, ANNA	12/17/2014	2	\$48.77
CERTIFICATED	WRITING WORKSHOP	LV	GRECO, GINA	12/17/2014	2	\$45.83
CERTIFICATED	WRITING WORKSHOP	GR	HANSEN-THOMPSON, STACY	12/17/2014	2	\$50.93
CERTIFICATED	WRITING WORKSHOP	TP	HANSON, MARLENE	12/17/2014	2	\$40.66
CERTIFICATED	WRITING WORKSHOP	PIO	HOLBROOK, DEANNA	12/17/2014	2	\$44.47
CERTIFICATED	WRITING WORKSHOP	DS	JENKINS, GLENN	12/17/2014	2	\$29.63
CERTIFICATED	WRITING WORKSHOP	EH	JONES, JANA	12/17/2014	2	\$47.22
CERTIFICATED	WRITING WORKSHOP	DS	JONES, JUDITH	12/17/2014	2	\$50.93
CERTIFICATED	WRITING WORKSHOP	HZ	KEARNEY, KAREN	12/17/2014	2	\$50.93
CERTIFICATED	WRITING WORKSHOP	LLH	KEITH, ALAURA	12/17/2014	2	\$37.12
CERTIFICATED	WRITING WORKSHOP	AJ	KEMP, BRIAN	12/17/2014	2	\$27.02
CERTIFICATED	WRITING WORKSHOP	LLH	KNAPP, STEPHANIE	12/17/2014	2	\$41.90
CERTIFICATED	WRITING WORKSHOP	CH	LAFAYETTE, MELISSA	12/17/2014	2	\$36.64
CERTIFICATED	WRITING WORKSHOP	CH	LEIR, AUTUMN	12/17/2014	2	\$28.09
CERTIFICATED	WRITING WORKSHOP	LV	LEWIS, LINDA	12/17/2014	2	\$48.77
CERTIFICATED	WRITING WORKSHOP	LLH	LIBADIA, RAPHAEL	12/17/2014	2	\$35.57
CERTIFICATED	WRITING WORKSHOP	GR	LINVILLE, DIANNA	12/17/2014	2	\$41.27
CERTIFICATED	WRITING WORKSHOP	EH	LOGAN, CAROLYN	12/17/2014	2	\$40.66
CERTIFICATED	WRITING WORKSHOP	TP	MARTIN, MICHAEL	12/17/2014	2	\$40.06
CERTIFICATED	WRITING WORKSHOP	PIO	MASSIMINO JR., JOSPEH	12/17/2014	2	\$35.27
CERTIFICATED	WRITING WORKSHOP	AJ	MATE, RHONDA	12/17/2014	2	\$27.73
CERTIFICATED	WRITING WORKSHOP	PIO	MATTIOLI, STEVEN	12/17/2014	2	\$44.47
CERTIFICATED	WRITING WORKSHOP	CH	MCCAUSLAND, CYNTHIA	12/17/2014	2	\$28.48
CERTIFICATED	WRITING WORKSHOP	AJ	MCGAUGHEY, DEBORA	12/17/2014	2	\$45.83
CERTIFICATED	WRITING WORKSHOP	CH	MINUS, TONETTE	12/17/2014	2	\$50.93
CERTIFICATED	WRITING WORKSHOP	WA	MONAGIN, KELLI	12/17/2014	2	\$43.17
CERTIFICATED	WRITING WORKSHOP	EH	MORFORD, TRESSA	12/17/2014	2	\$42.54
CERTIFICATED	WRITING WORKSHOP	GR	MYERS, MARTY	12/17/2014	2	\$28.44
CERTIFICATED	WRITING WORKSHOP	LLH	PETERS, TRINA	12/17/2014	2	\$43.84
CERTIFICATED	WRITING WORKSHOP	EH	RASMUSSEN, KARINE	12/17/2014	2	\$45.17
CERTIFICATED	WRITING WORKSHOP	PIO	ROWE, DANIELA	12/17/2014	2	\$44.89
CERTIFICATED	WRITING WORKSHOP	GR	SANTMAN, DARCIE	12/17/2014	2	\$40.06
CERTIFICATED	WRITING WORKSHOP	GR	SELLERS, KAITLYN	12/17/2014	2	\$27.73
CERTIFICATED	WRITING WORKSHOP	WA	SENG, KIMBERLY	12/17/2014	2	\$50.93
CERTIFICATED	WRITING WORKSHOP	ALP	SKIFF, CARL	12/17/2014	2	\$50.93
CERTIFICATED	WRITING WORKSHOP	IL	SKORNIAKOFF, TRACEY	12/17/2014	2	\$32.76
CERTIFICATED	WRITING WORKSHOP	GR	SLEASE, CRISTINA	12/17/2014	2	\$27.73

CERTIFICATED	WRITING WORKSHOP	WA	SMITH, TORI	12/17/2014	2	\$40.06
CERTIFICATED	WRITING WORKSHOP	DS	SPEARS, LINDSAY	12/17/2014	2	\$34.19
CERTIFICATED	WRITING WORKSHOP	IL	SPRENGER, PETER	12/17/2014	2	\$50.93
CERTIFICATED	WRITING WORKSHOP	WA	UFFALUSSY, LESLIE	12/17/2014	2	\$35.57
CERTIFICATED	WRITING WORKSHOP	PIO	VERLANDER, MELISSA	12/17/2014	2	\$27.73
CERTIFICATED	WRITING WORKSHOP	DS	WISENER, AIMEE	12/17/2014	2	\$28.48
CERTIFICATED	WRITING WORKSHOP	LLH	WOOLERY, MICHELLE	12/17/2014	2	\$42.54

New Hire

CERTIFICATED	TEACHER/SPEC ED	WA	PETERSON, STEPHANIE	1/27/2015	C1, S0
--------------	-----------------	----	---------------------	-----------	--------

REPORT -

Curriculum-Noncurriculum

CLASSIFIED	ACCOMPANIST - CHOIR	MT BAKER	CARMAN, BARBARA	9/15/2014	30	\$15.00
CLASSIFIED	ASSISTANT - CHOIR	AUBURN HIGH	BRINN, MOLLY	11/3/2014	200	\$15.48
CLASSIFIED	ASSISTANT COACH - CHEER (WINTER)	AUBURN RIVERSIDE	TERHUNE, TAHLIA	11/1/2014	198	STIPEND - \$2,926
CLASSIFIED	ASSISTANT COACH - DEBATE	AUBURN RIVERSIDE	MEEKER, KELLI	9/3/2014	200	STIPEND - \$3,537
CLASSIFIED	ASSISTANT COACH - FAST PITCH	AUBURN RIVERSIDE	QUINTERO, STEFANIE	11/20/2014	100	\$19.31
CLASSIFIED	ASSISTANT COACH - GIRLS' BASKETBALL	AUBURN MOUNTAINVIEW	KOSKO-TUIVAI, HATTIE	11/10/2014	84	STIPEND-\$1,263.36
CLASSIFIED	ASSISTANT COACH - GIRLS' BASKETBALL 7th GRADE	CASCADE	QUADRI, MUSEMIL	1/5/2015	150	STIPEND - \$2,940
CLASSIFIED	ASSISTANT COACH - GYMNASICS	AUBURN MOUNTAINVIEW	HOWITZ, MICHELLE	11/10/2014	108	STIPEND - \$2,065
CLASSIFIED	ASSISTANT COACH - WRESTLING	AUBURN MOUNTAINVIEW	HARTEAU, NICHOLAS	11/10/2014	120	STIPEND - \$2,316.66
CLASSIFIED	ASSISTANT COACH - WRESTLING	CASCADE	WASHBURN, KENT	1/5/2015	150	STIPEND - \$2,697
CLASSIFIED	CATERING - AHS OPEN HOUSE	AUBURN HIGH	BALL, LORETTA	8/20/2014	8	\$18.47
CLASSIFIED	CONSULTANT - CHOIR	AUBURN RIVERSIDE	FULKERSON, DARCY	12/1/2014	50	\$20.00
CLASSIFIED	DD3 GRANT - AFTER SCHOOL PROGRAM	DICK SCOBEE	CAIN, LAURA	1/20/2015	84	\$16.53
CLASSIFIED	DD3 GRANT - AFTER SCHOOL PROGRAM	DICK SCOBEE	CARTER, DIANE	1/20/2015	60	\$16.93
CLASSIFIED	DD3 GRANT - AFTER SCHOOL PROGRAM	DICK SCOBEE	COOK, CLAIRE	1/20/2015	84	\$16.69
CLASSIFIED	DD3 GRANT - AFTER SCHOOL PROGRAM	DICK SCOBEE	ORTIZ, MARY	1/20/2015	63	\$16.38
CLASSIFIED	DD3 GRANT - AFTER SCHOOL PROGRAM	DICK SCOBEE	SCOTT, BARBARA	1/20/2015	63	\$16.52
CLASSIFIED	DD3 GRANT - AFTER SCHOOL PROGRAM	DICK SCOBEE	STRICKLAND, BRANDY	1/20/2015	63	\$16.69
CLASSIFIED	DD3 GRANT - AFTER SCHOOL PROGRAM	DICK SCOBEE	WALLER, MARSHA	1/12/2015	84	\$16.22
CLASSIFIED	EXTRA HOURS - CONCERT ASSISTANCE	ANNEX	DRAY, DIANA	12/18/2014	1.5	\$16.69
CLASSIFIED	EXTRA HOURS - DATA ENTRY	DICK SCOBEE	ORTIZ, MARY	12/8/2014	20	\$16.38
CLASSIFIED	EXTRA HOURS - FAMILY ENGAGEMENT EVENTS	ADMINISTRATION	CASTRO-ACOSTA, ILEANA	10/1/2014	8	\$17.65
CLASSIFIED	EXTRA HOURS - FEDERAL SURVEY	ADMINISTRATION	FIKSDAL, KELLY	12/22/2014	20	\$15.25
CLASSIFIED	EXTRA HOURS - TESTING CENTER	AUBURN RIVERSIDE	HIPOL, CONNIE	9/3/2014	90	\$20.00
CLASSIFIED	INSTRUCTIONAL TIME - READING INTERVENTION	LAKELAND HILLS	HOFMAN, BETHANY	1/5/2015	16.5	\$16.38
CLASSIFIED	INTERVIEW TEAM	ADMINISTRATION	HOKSBERGEN, MARILYN	12/18/2014	2.5	\$21.16
CLASSIFIED	PARENT CONFERENCE - TITLE COMPACTS	OLYMPIC	DAUMIT, ELISABETH	11/20/2014	4	\$17.53
CLASSIFIED	PARENT CONFERENCE - TITLE COMPACTS	OLYMPIC	MILLER, TAMMY	11/20/2014	4	\$17.53
CLASSIFIED	PROFESSIONAL DEVELOPMENT - READING	OLYMPIC	FOUTCH, PATTI	8/25/2014	4	\$16.51
CLASSIFIED	REFEREE	ALPAC	MILLER, CHRISTIAN	11/4/2014		\$20.00
CLASSIFIED	REFEREE	ALPAC	PEGRAM, DEREK	11/4/2014	2	\$20.00
CLASSIFIED	REFEREE	ALPAC	QUADRI, MUSEMIL	11/4/2014	2	\$20.00
CLASSIFIED	SCOREKEEPER	GILDO REY	GARRIDO, KATHLEEN	11/6/2014		\$20.00
CLASSIFIED	TUTOR	ANNEX	BRUX, SHAWNA	1/5/2015	20	\$16.95
CLASSIFIED	TUTOR	ANNEX	GARNICA, EBONIE	1/12/2015	20	\$16.21
CLASSIFIED	TUTOR	ANNEX	JONES, CODY	1/5/2015	40	\$16.21
CLASSIFIED	WAKIDS - TRAINING AND ASSESSMENT	DEPT OF STUDENT LEARNING	MADEO, LINDA	8/20/2014	98	\$15.58
CLASSIFIED	WAKIDS - TRAINING AND ASSESSMENT	DEPT OF STUDENT LEARNING	WILKINSON, EMELIA	8/20/2014	98	\$15.58
CLASSIFIED	WEDNESDAY NIGHT SCHOOL	AUBURN MOUNTAINVIEW	HITTLE, KELLY	1/14/2015	2	\$20.00

New Hire

CLASSIFIED	O-AA ATTENDANCE	CASCADE	REID, KEVIN	1/14/2015		\$17.01 QUALIFIED APPLICANT
CLASSIFIED	O-AA SUPPORT SERVICES	SUPPORT SERVICES	WHITE, NANCY	1/15/2015		\$17.01 QUALIFIED APPLICANT
CLASSIFIED	PARA EDUCATOR READING/MATH	AUBURN MOUNTAINVIEW	CLAUDON, NICOLE	1/15/2015	6.5 \$	15.89 QUALIFIED APPLICANT

Rehire

CLASSIFIED	K-KITCHEN MGR ELEM	DICK SCOBEE	BALDWIN, DEBRA	1/5/2015	8	\$18.21 REHIRED FOR 2014-15
CLASSIFIED	O-OFFICE PROFESSIONAL ENROLLMENT	EVERGREEN HEIGHTS	PERRY, MISHA	12/1/2014		\$16.24 QUALIFIED APPLICANT

Resignation

CLASSIFIED	ASSISTANT COACH - VOLLEYBALL	AUBURN MOUNTAINVIEW	HOFFMAN, KASSIDY	10/28/2014		TERMINATION
CLASSIFIED	O-AA ASST PRIN 200	AUBURN HIGH	RAY, KATHLEEN	2/27/2015		RETIREMENT
CLASSIFIED	PARA EDUCATOR TITLE/LAP	ARTHUR JACOBSEN	MILLER, JANELLE	1/8/2015		PERSONAL

Supervision

CLASSIFIED	DISTRICT/NON-DISTRICT ATHLETICS/ACTIVITIES	AUBURN HIGH	JEFFERIES, WILLIAM	12/17/2014		\$20.00
CLASSIFIED	DISTRICT/NON-DISTRICT ATHLETICS/ACTIVITIES	AUBURN HIGH	VANDERPUI, MEGAN	12/1/2014		\$20.00

Student

CLASSIFIED	LIFEGUARD/INSTRUCTOR	POOL	ZANOTELLI, JULIA	11/14/2014	\$9.32
CLASSIFIED	LIFEGUARD/INSTRUCTOR	POOL	ZAYTSEVA, YELENA	11/14/2014	\$9.32

CERTIFICATED RESUME

a. Stephanie Peterson--special education--Washington Elementary

Ms. Peterson earned her bachelor degree at Eastern Washington University.

Stephanie previously worked for the Sumner School District.

BUILDING PROGRAM

1. 2014 Portable Classrooms Electrical--Arthur Jacobsen, Evergreen Heights, Ilalko Elementary Schools

Attached is a copy of Change Order No. 1 for the 2014 Portable Classrooms Electrical--Arthur Jacobsen, Evergreen Heights, Ilalko Elementary Schools project which should be considered to permit a change in the construction contract amount.

Original Contract	\$198,000.00
Previously Approved	0.00
Change Order No. 1	+\$ 3,471.00
New Contract Amount	<u>\$201,471.00</u>

Jeffrey Grose, executive director of capital projects, will be present to recommend acceptance of this change order.

Recommendation: That Change Order No. 1 be accepted for the 2014 Portable Classrooms Electrical--Arthur Jacobsen, Evergreen Heights, Ilalko Elementary Schools project and the contract amount be increased by \$3,471.00 for a new contract amount of \$201,471.00.

2. Auburn High School Modernization & Reconstruction Project

Attached are copies of Change Order Nos. 56, 57, and 58 for the Auburn High School Modernization & Reconstruction project which should be considered to permit a change in the construction contract amount.

Original Contract	\$80,570,700.00
Previously Approved	2,442,540.00
Change Order No. 56	41,412.00
Change Order No. 57	68,450.00
Change Order No. 58	+\$ 40,093.00
New Contract Amount	<u>\$83,163,195.00</u>

Jeffrey Grose will be present to recommend acceptance of these change orders.

Recommendation: That Change Order Nos. 56, 57, and 58 be accepted for the Auburn High School Modernization & Reconstruction project and the contract amount be increased by \$149,955.00 for a new contract amount of \$83,163,195.00.

3. Auburn High School--Work in Progress Report

Jeffrey Grose will be present to report on the progress of the Auburn High School Modernization & Reconstruction project.

Change Order

PROJECT: Portable Classrooms 2014 AJ EH IL Electrical

CHANGE ORDER NO.: 1

DATE: January 19, 2015

TO CONTRACTOR: Steele Electric Company
4722 Bayview Lane
Everett, WA 98203

CONTRACT DATED: December 15, 2014

ENGINEER'S PROJECT NO.: 14-163

The Contract is changed as follows:

1.	PR-01 -- Additional Sawcut and Repair of Asphalt Walkway	Add	\$ 2,236.00
2.	PR-02 -- Remove Excess Soil from West Side of Asphalt Paving	Add	\$ 1,235.00

The original Contract Sum was	\$ 198,000.00
Net change by previously authorized Change Orders	\$ 0.00
The Contract Sum prior to this Change Order was	\$ 198,000.00
The Contract Sum will be increased by this change order	\$ 3,471.00
The new Contract Sum including this Change Order will be	\$ 201,471.00

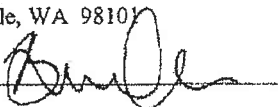
The Contract Time for the Work will remain unchanged.

The date of Substantial Completion as of the date of this Change Order is January 30, 2015.

Hargis Engineers, Inc.
1201 Third Avenue, Suite 600
Seattle, WA 98101

Auburn School District #408
915 Fourth Street N.E.
Auburn, WA 98002

Steele Electric Company
4722 Bayview Lane
Everett, WA 98203

By: 

By: _____

By: 

Date: 1/16/15

Date: _____

Date: 1-19-15

Change Order

PROJECT: AUBURN HIGH SCHOOL MODERNIZATIONS & RECONSTRUCTION
800 Fourth Street NE, Auburn, WA 98002

CHANGE ORDER NO.: 56

DATE: January 20, 2015

TO CONTRACTOR: Lydig Construction Company
3180 139th Ave SE, Suite 110
Bellevue, WA 98005

CONTRACT DATED: February 18, 2013

ARCHITECT'S PROJECT NO.: 121-10016

The Contract is changed as follows:

1. PR-079R	Provide School Colors and Name on Floor of Main Gym	\$1,834.00
2. PR-144	Delete School Logo at Center of Floor in Main Gym	(\$1,250.00)
3. CCA-104	Provide Access Panels at Concealed Areas	\$2,654.00
4. CCA-107	Modify Heat Recovery Unit Locations and Floor Openings	\$14,727.00
5. CCA-204	Modify Pile Cap P2 at PAC	\$2,064.00
6. CCA-224	Provide Masonry Support at Corridor 072	\$5,370.00
7. CCA-228	Provide Parking Area Improvements at Property along I St. NE	\$12,256.00
8. CCA-321	Provide Commercial Grade Dishwasher at Student Store 129	\$1,865.00
9. CCA-360	Remove Existing Theater Seating in PAC Balcony	\$1,892.00
	Total This Change Order	\$41,412.00

The original Contract Sum was	\$	80,570,700.00
Net change by previously authorized Change Orders	\$	2,442,540.00
The Contract Sum prior to this Change Order was	\$	83,013,240.00
The Contract Sum will be increased by this change order	\$	41,412.00
The new Contract Sum including this Change Order will be	\$	83,054,652.00

The Contract Time will remain unchanged by 0 days
The date of Substantial Completion as of the date of this Change Order therefore is July 1, 2016

Pursuant to the Contract, the execution of this Change Order constitutes a waiver of claims by the Contractor arising out of the Work to be performed or deleted pursuant to this Change Order, except as specifically described herein. Reservation of rights will be deemed waived and are void unless the reserved rights are specifically described in detail to the satisfaction of the Owner and are initialed by the Owner.

NACIArchitecture
2025 First Avenue, Suite 300
Seattle, WA 98121

Auburn School District #408
915 Fourth Street NE
Auburn, WA 98002

Lydig Construction Company
3180 139th Ave SE, Suite 110
Bellevue, WA 98005



By: Brent Compton
Date: January 20, 2015

By: Michael Newman
Date: _____



By: Brandon Watts
Date: 1-20-2015

Change Order

PROJECT: AUBURN HIGH SCHOOL MODERNIZATIONS & RECONSTRUCTION
800 Fourth Street NE, Auburn, WA 98002

CHANGE ORDER NO.: 57

DATE: January 20, 2015

TO CONTRACTOR: Lydig Construction Company
3180 139th Ave SE, Suite 110
Bellevue, WA 98005

CONTRACT DATED: February 18, 2013

ARCHITECT'S PROJECT NO.: 121-10016

The Contract is changed as follows:

1. CCA-131	Provide Electrical Connection at Bottle Fill Station at Stair 013A	\$1,515.00
2. CCA-152	Provide Switch Connections at Fume Hoods	\$13,692.00
3. CCA-206	Modify Circuit Breaker at Emergency Shut Off Switch in Woods 506	\$1,896.00
4. CCA-213	Modify Circuit Breakers at Walk-in Freezer Condensate Lines	\$849.00
5. CCA-217	Provide Electrical Modifications at Elevator Equipment Room 1301	\$1,558.00
6. CCA-232	Provide Electrical Receptacles at Welding Room 510C	\$14,162.00
7. CCA-234	Provide Electrical Circuits to Exterior Reader Boards	\$6,448.00
8. CCA-236	Modify Electrical Receptacles at Sink Cabinets	\$3,540.00
9. CCA-275	Provide Exhaust Fan for Heat Treat Oven in Jewelry 104	\$22,026.00
10. CCA-315	Provide Electrical Modifications at Café Auburn 404 and Woods 506	<u>\$2,764.00</u>
	Total This Change Order	\$68,450.00

The original Contract Sum was	\$	80,570,700.00
Net change by previously authorized Change Orders	\$	2,483,952.00
The Contract Sum prior to this Change Order was	\$	83,054,652.00
The Contract Sum will be increased by this change order	\$	68,450.00
The new Contract Sum including this Change Order will be	\$	83,123,102.00

The Contract Time will remain unchanged by 0 days
The date of Substantial Completion as of the date of this Change Order therefore is July 1, 2016

Pursuant to the Contract, the execution of this Change Order constitutes a waiver of claims by the Contractor arising out of the Work to be performed or deleted pursuant to this Change Order, except as specifically described herein. Reservation of rights will be deemed waived and are void unless the reserved rights are specifically described in detail to the satisfaction of the Owner and are initialed by the Owner.

NACIArchitecture
2025 First Avenue, Suite 300
Seattle, WA 98121

Auburn School District #408
915 Fourth Street NE
Auburn, WA 98002

Lydig Construction Company
3180 139th Ave SE, Suite 110
Bellevue, WA 98005



By: Brent Compton
Date: January 20, 2015

By: Michael Newman
Date: _____



By: Brandon Watts
Date: 1-20-2015

Change Order

PROJECT: AUBURN HIGH SCHOOL MODERNIZATIONS & RECONSTRUCTION
800 Fourth Street NE, Auburn, WA 98002

CHANGE ORDER NO.: 58

DATE: January 20, 2015

TO CONTRACTOR: Lydig Construction Company
3180 139th Ave SE, Suite 110
Bellevue, WA 98005

CONTRACT DATED: February 18, 2013

ARCHITECT'S PROJECT NO.: 121-10016

The Contract is changed as follows:

1. CCA-249	Provide Temporary Phase 2 Gas Service Line to Existing Boiler Room	\$15,403.00
2. CCA-349	Provide Additional Phase 2 Work to Expedite Completion	<u>\$24,690.00</u>
	Total This Change Order	\$40,093.00

The original Contract Sum was	\$	80,570,700.00
Net change by previously authorized Change Orders	\$	2,552,402.00
The Contract Sum prior to this Change Order was	\$	83,123,102.00
The Contract Sum will be increased by this change order	\$	40,093.00
The new Contract Sum including this Change Order will be	\$	83,163,195.00

The Contract Time will remain unchanged by 0 days
The date of Substantial Completion as of the date of this Change Order therefore is July 1, 2016

Pursuant to the Contract, the execution of this Change Order constitutes a waiver of claims by the Contractor arising out of the Work to be performed or deleted pursuant to this Change Order, except as specifically described herein. Reservation of rights will be deemed waived and are void unless the reserved rights are specifically described in detail to the satisfaction of the Owner and are initialed by the Owner.

NAC|Architecture
2025 First Avenue, Suite 300
Seattle, WA 98121


Auburn School District #408
915 Fourth Street NE
Auburn, WA 98002

Lydig Construction Company
3180 139th Ave SE, Suite 110
Bellevue, WA 98005



By: Brent Compton
Date: January 20, 2015

By: Michael Newman
Date: _____



By: Brandon Watts
Date: 1-20-2015

FINANCE

1. Vouchers

Vouchers will be presented.

Recommendation: That these vouchers be signed.

2. Financial Statements

Financial statements for the month of December, 2014, are presented to the board for their information.

The following vouchers, as audited and certified by the Auditing Officer as required by RCW 42.24.080, and those expense reimbursement claims certified as required by RCW 42.24.090, are approved for payment. Those payments have been recorded on this listing which has been made available to the board.

As of January 26, 2015, the board, by a _____ vote, approves payments, totaling \$1,160,373.39. The payments are further identified in this document.

Total by Payment Type for Cash Account, US Bank of Washington:
Warrant Numbers 423479 through 423672, totaling \$1,160,373.39

Secretary _____	Board Member _____
Board Member _____	Board Member _____
Board Member _____	Board Member _____

Check Nbr	Vendor Name	Check Date	Check Amount
423479	*WEA- 001 (COBRA)	01/26/2015	13,580.85
423480	*WEA - 002 (COBRA)	01/26/2015	3,812.35
423481	*WEA - 004 (COBRA)	01/26/2015	222.65
423482	3 WIRE GROUP INC	01/26/2015	221.31
423483	ADI	01/26/2015	74.46
423484	AGRISHOP INC	01/26/2015	26.21
423485	ALPINE PRODUCTS INC	01/26/2015	843.32
423486	AMERICAN ACADEMY ~ GRADUATION	01/26/2015	15,345.00
423487	AMERICAN FLOORS & BLINDS	01/26/2015	155.00
423488	AMERICAN LIGHTING INC	01/26/2015	183.94
423489	ANDERSON, TRAVIS WILLIAM	01/26/2015	198.99
423490	APPLE COMPUTER INC	01/26/2015	1,926.11
423491	APPLES TO GO	01/26/2015	2,627.00
423492	ARAMARK UNIFORM SERVICES	01/26/2015	27.14
423493	ARTHUR J GALLAGHER & CO	01/26/2015	2,031.00
423494	AUBURN ELECTRICAL SERVICE INC	01/26/2015	2,469.99
423495	AUBURN MOUNTAINVIEW H S	01/26/2015	2,000.00

Check Nbr	Vendor Name	Check Date	Check Amount
423496	AUBURN RIVERSIDE HS CULINARY A	01/26/2015	270.00
423497	AUBURN RIVERSIDE H S	01/26/2015	2,000.00
423498	AUBURN SCHOOL DIST 408 **	01/26/2015	14,000.00
423499	AUBURN SENIOR H S	01/26/2015	1,400.00
423500	AUBURN SENIOR H S	01/26/2015	2,000.00
423501	AUBURN YOUTH RESOURCES INC	01/26/2015	5,521.88
423502	AVER INFORMATION INC	01/26/2015	110.00
423503	BEICKMAN, DARLENE	01/26/2015	336.00
423504	BELL, THOMAS	01/26/2015	241.00
423505	BILLS LOCKSMITH SERVICE INC	01/26/2015	104.03
423506	BRYSON SALES & SERVICE	01/26/2015	698.00
423507	C & M GLASS CO DBA NIEMEN GLAS	01/26/2015	104.03
423508	CALLOWAY HOUSE INC	01/26/2015	217.94
423509	CARSON DELLOSA PUBLISHING CO L	01/26/2015	75.47
423510	CDW GOVERNMENT INC	01/26/2015	1,419.47
423511	CHILDRENS INSTITUTE FOR LEARNI	01/26/2015	8,169.38
423512	CHINN, ROBERT	01/26/2015	16.00
423513	CIM TECHNOLOGY SOLUTIONS	01/26/2015	187.20
423514	CITY OF KENT	01/26/2015	450.00
423515	CITY OF AUBURN	01/26/2015	168,505.00
423516	CLASSAPPS	01/26/2015	250.00
423517	COMBATIVE SOLUTIONS LLC	01/26/2015	500.00
423518	CONSOLIDATED ELECTRICAL DIST I	01/26/2015	16.71
423519	CONSTRUCTION INDUSTRY TRAINING	01/26/2015	119.00
423520	CONTRAX GROUP LLC	01/26/2015	3,629.13

Check Nbr	Vendor Name	Check Date	Check Amount
423521	COVINGTON WATER DIST	01/26/2015	1,315.05
423522	CREATIVE OFFICE	01/26/2015	957.03
423523	CUMMINS NW LLC	01/26/2015	123.15
423524	DAIRY FRESH FARMS INC	01/26/2015	25,829.18
423525	DELTA ELECTRIC MOTORS INC	01/26/2015	417.03
423526	DEPT OF ENTERPRISE SERVICES	01/26/2015	225.00
423527	DEPT OF LABOR & INDUSTRIES	01/26/2015	228.20
423528	DON SMALL & SONS OIL DIST CO	01/26/2015	3,161.81
423529	DRUG FREE BUSINESS	01/26/2015	1,455.88
423530	Vendor Continued Check	01/26/2015	0.00
423531	Vendor Continued Check	01/26/2015	0.00
423532	DYNAMIC LANGUAGE CENTER INC	01/26/2015	703.66
423533	EDWARD AND LEE LLC	01/26/2015	3,525.00
423534	EK BEVERAGE COMPANY	01/26/2015	150.00
423535	EMERALD AIRE INC	01/26/2015	630.00
423536	EMERALD AIRE INC	01/26/2015	2,163.17
423537	FOLLETT SCHOOL SOLUTIONS INC	01/26/2015	1,337.70
423538	FRED PRYOR SEMINARS	01/26/2015	299.00
423539	GALETON	01/26/2015	138.52
423540	GOODY MAN DISTRIBUTING INC	01/26/2015	163.34
423541	GOS PRINTING CORP	01/26/2015	65.59
423542	GRAINGER DEPT 810392688	01/26/2015	1,585.08
423543	GUSTAFSON, DIANE	01/26/2015	15.00
423544	HEALTH VENTURE	01/26/2015	1,968.75
423545	JTM PROVISIONS CO	01/26/2015	1,655.90

Check Nbr	Vendor Name	Check Date	Check Amount
423546	KDL HARDWARE SUPPLY INC	01/26/2015	168.69
423547	KING, KALIN C	01/26/2015	2,380.00
423548	KING COUNTY DIRECTORS ASSN	01/26/2015	1,390.53
423549	KONICA MINOLTA BUSINESS SOLUTI	01/26/2015	4,017.54
423550	LANGUAGE CONNECTION LLC	01/26/2015	2,619.50
423551	LIGHTSPEED TECHNOLOGIES INC	01/26/2015	237.62
423552	MACGILL & CO	01/26/2015	104.90
423553	MACKIN EDUCATIONAL RESOURCES	01/26/2015	1,052.15
423554	MAXIM STAFFING SOLUTIONS	01/26/2015	1,387.00
423555	MICONTROLS INC	01/26/2015	1,758.62
423556	MICRO COMPUTER SYSTEMS INC	01/26/2015	2,770.18
423557	MILL SUPPLY INC	01/26/2015	30.50
423558	MOTOR OIL SUPPLY INC	01/26/2015	1,862.93
423559	MURIITHI, CATHERINE W	01/26/2015	8.00
423560	NUSS, JANETTE	01/26/2015	20.00
423561	NW SCHOOL HEARING FOR HEARING	01/26/2015	3,700.00
423562	NW TEXTBOOK DEPOSITORY	01/26/2015	3,252.21
423563	ORCA PACIFIC INC	01/26/2015	1,541.05
423564	ORCUTT, CHRISTINE A	01/26/2015	225.00
423565	PACIFIC BOAT TOPS & UPHOLSTERY	01/26/2015	1,894.35
423566	PACIFIC INTERPRETERS INC	01/26/2015	781.20
423567	PACIFIC POWER GROUP LLC	01/26/2015	243.65
423568	PETRO CARD	01/26/2015	20,406.76
423569	PITNEY BOWES POSTAGE BY PHONE	01/26/2015	10,000.00
423570	PR MEDIA	01/26/2015	275.00

Check Nbr	Vendor Name	Check Date	Check Amount
423571	PREG O'DONNELL & GILLET PLLC	01/26/2015	4,400.00
423572	PROGRESSUS THERAPY INC	01/26/2015	7,935.90
423573	PUGET SOUND ENERGY ELECTRIC	01/26/2015	115,040.27
423574	Vendor Continued Check	01/26/2015	0.00
423575	Vendor Continued Check	01/26/2015	0.00
423576	PUGET SOUND ENERGY NAT GAS	01/26/2015	48,054.67
423577	PUYALLUP SCHOOL DIST	01/26/2015	52,902.80
423578	RIMANN, BETH	01/26/2015	23.00
423579	ROCK CHIP GUYS LLC	01/26/2015	344.93
423580	ROGERS MACHINERY COMPANY INC	01/26/2015	490.51
423581	ROMASHCHUK, VERA	01/26/2015	29.00
423582	SAXTON BRADLEY INC	01/26/2015	4,046.03
423583	SCHETKY NW SALES INC	01/26/2015	511.69
423584	SCHOLASTIC CLASSROOM MAGAZINES	01/26/2015	1,290.58
423585	SIMMONS, KIONNIA	01/26/2015	185.36
423586	SIX ROBBLEES INC	01/26/2015	1,855.06
423587	SNYDERS PIANO SERVICE	01/26/2015	200.00
423588	SOPHUS HEALTH CARE INC	01/26/2015	3,321.00
423589	SOUTH SOUND CHAMBER OF COMMERC	01/26/2015	50.00
423590	SPRAGUE ISRAEL GILES INC	01/26/2015	4,189.50
423591	STATE AUDITOR'S OFFICE LEGIS B	01/26/2015	2,842.40
423592	TACOMA SCREW PRODUCTS INC	01/26/2015	1,298.44
423593	THERMAL SUPPLY INC	01/26/2015	712.08
423594	THYSSENKRUPP ELEVATOR CORP	01/26/2015	879.56
423595	THYSSENKRUPP ELEVATOR CORP	01/26/2015	537.92

Check Nbr	Vendor Name	Check Date	Check Amount
423596	TIDLER, JOHN A	01/26/2015	250.00
423597	TIME EQUIPMENT COMPANY	01/26/2015	653.72
423598	TODAYS CLASSROOM LLC	01/26/2015	2,438.53
423599	TROXELL COMMUNICATIONS INC	01/26/2015	481.68
423600	UNIFIRST CORPORATION	01/26/2015	366.56
423601	UNISOURCE WORLDWIDE INC	01/26/2015	3,144.41
423602	UNIVERSAL LANGUAGE SERVICE INC	01/26/2015	3,987.75
423603	US SCHOOL SUPPLY INC	01/26/2015	187.75
423604	USA MOBILITY WIRELESS INC	01/26/2015	337.20
423605	WALMART SAMS CLUB	01/26/2015	456.27
423606	WASH STATE ASSN FOR SUPERVISIO	01/26/2015	50.00
423607	WASH STATE DEPT OF AGRICULTURE	01/26/2015	264.00
423608	WEST COAST PLATEN COMPANY	01/26/2015	107.46
423609	WESTERN MECHANICAL CONTRACTORS	01/26/2015	534.36
423610	WORLD LANGUAGE SERVICES LLC	01/26/2015	236.63
423611	AMERESCO INC	01/26/2015	234,299.32
423612	CASCADE LAND SURVEYING	01/26/2015	1,000.00
423613	COBRA BEC INC	01/26/2015	102.71
423614	CONTRAX GROUP LLC	01/26/2015	1,089.87
423615	DELL MARKETING LP % DELL USA L	01/26/2015	5,501.28
423616	DEPT OF REVENUE LEASEHOLD TAX	01/26/2015	2,469.71
423617	HAYRE MCELROY & ASSOCIATES LLC	01/26/2015	6,504.00
423618	J C ENTERTAINMENT LIGHTING SER	01/26/2015	36,919.38
423619	LAKEHAVEN UTILITY DISTRICT	01/26/2015	9.75
423620	MCKINNEY TRAILERS & CONTAINERS	01/26/2015	105.39

Check Nbr	Vendor Name	Check Date	Check Amount
423621	Vendor Continued Check	01/26/2015	0.00
423622	MICRO COMPUTER SYSTEMS INC	01/26/2015	88,491.52
423623	OETC	01/26/2015	2,960.48
423624	SCOTTYS GENERAL CONSTRUCTION I	01/26/2015	24,242.95
423625	SHOCKEY PLANNING GROUP INC	01/26/2015	775.27
423626	STEELE ELECTRIC COMPANY	01/26/2015	80,752.38
423627	WELSH COMMISSIONING GROUPS INC	01/26/2015	9,211.50
423628	AREA 5 DECA	01/26/2015	200.00
423629	ASPIRE FUNDRAISING ~ MIDLAND F	01/26/2015	662.47
423630	COCA COLA REFRESHMENTS USA INC	01/26/2015	629.68
423631	COSTCO	01/26/2015	1,381.48
423632	DAZZLING BOWS & BLING	01/26/2015	352.00
423633	DECARTERET DESIGNS LLC	01/26/2015	1,626.00
423634	EK BEVERAGE COMPANY	01/26/2015	296.20
423635	EMERALD RIDGE HIGH SCHOOL	01/26/2015	36.00
423636	EWEBANKS CREATIONS	01/26/2015	43.80
423637	FLAGS4VETS	01/26/2015	680.00
423638	GAME TIME EVENTS	01/26/2015	2,436.00
423639	GIG HARBOR HIGH SCHOOL	01/26/2015	134.00
423640	GO FIGHT WIN MUSIC	01/26/2015	399.00
423641	GREEN RIVER MUSIC EDUCATORS AS	01/26/2015	445.00
423642	INVISIBLE CHILDREN INC	01/26/2015	340.00
423643	JOSTENS	01/26/2015	1,111.43
423644	K D GRAZIE INC	01/26/2015	360.00
423645	KING COUNTY DIRECTORS ASSN	01/26/2015	103.78

Check Nbr	Vendor Name	Check Date	Check Amount
423646	MUSIC THEATRE INTERNATIONAL	01/26/2015	840.50
423647	NEFF COMPANY	01/26/2015	456.94
423648	OUTHOUSE SCREENPRINTING	01/26/2015	27.00
423649	PACIFIC NW BASKETBALL OFFICIAL	01/26/2015	1,490.58
423650	PACIFIC NW THEATRE ASSN INC	01/26/2015	565.43
423651	SAMUEL FRENCH INC	01/26/2015	14.03
423652	SEATTLE OFFICIALS WOMENS BASKE	01/26/2015	851.76
423653	STERLING ATHLETICS	01/26/2015	1,963.73
423654	SUNRISE DISTRIBUTION INC	01/26/2015	331.00
423655	TAHOMA HIGH SCHOOL	01/26/2015	90.00
423656	THOMAS JEFFERSON HIGH SCHOOL	01/26/2015	96.00
423657	UNITED NATIONS FOUNDATIONS	01/26/2015	133.48
423658	WASH INTERSCHOLASTIC ACTIVITIE	01/26/2015	75.00
423659	WASH STATE CHEER COACHES ASSN	01/26/2015	200.00
423660	WASH STATE THESPIANS	01/26/2015	30.00
423661	WEST COAST AWARDS & ATHLETICS	01/26/2015	233.02
423662	WESTERN WASH FOOTBALL OFFICIAL	01/26/2015	1,583.17
423663	AUBURN MOUNTAINVIEW H S	01/26/2015	370.00
423664	AUBURN RIVERSIDE H S	01/26/2015	40.00
423665	AUBURN SCHOOL DIST CHILD NUTR*	01/26/2015	4,137.60
423666	AUBURN SCHOOL DIST CHILD NUTR*	01/26/2015	1,934.40
423667	AUBURN SCHOOL DIST CHILD NUTR*	01/26/2015	3,774.99
423668	AUBURN SENIOR H S	01/26/2015	2,454.25
423669	CASCADE M S	01/26/2015	102.16
423670	OLYMPIC M S	01/26/2015	1,043.00

Check Nbr	Vendor Name	Check Date	Check Amount
423671	TELFORD, HEATHER AND SEATTLE U	01/26/2015	400.00
423672	TRUJILLO, AISHA AND SHORELINE	01/26/2015	500.00
194	Computer	Check(s) For a Total of	1,160,373.39

0	Manual	Checks For a Total of	0.00
0	Wire Transfer	Checks For a Total of	0.00
0	ACH	Checks For a Total of	0.00
194	Computer	Checks For a Total of	1,160,373.39
Total For 194	Manual, Wire Tran, ACH & Computer	Checks	1,160,373.39
Less 0	Voided	Checks For a Total of	0.00
	Net Amount		1,160,373.39

F U N D S U M M A R Y

Fund	Description	Balance Sheet	Revenue	Expense	Total
10	General Fund	20,713.45	14,827.00	595,422.55	630,963.00
20	Capital Projects	-3,172.02	0.00	497,607.53	494,435.51
40	ASB Fund	0.00	0.00	20,218.48	20,218.48
70	Private Purpose	0.00	0.00	14,756.40	14,756.40

The following vouchers, as audited and certified by the Auditing Officer as required by RCW 42.24.080, and those expense reimbursement claims certified as required by RCW 42.24.090, are approved for payment. Those payments have been recorded on this listing which has been made available to the board.

As of January 26, 2015, the board, by a _____ vote, approves payments, totaling \$129,022.30. The payments are further identified in this document.

Total by Payment Type for Cash Account, US Bank Wire Transfers:

Wire Transfer Payments 201400311 through 201400368, totaling \$129,022.30

Secretary _____	Board Member _____
Board Member _____	Board Member _____
Board Member _____	Board Member _____

Check Nbr	Vendor Name	Check Date	Check Amount
201400311	LES SCHWAB TIRE CENTER	01/26/2015	706.74
201400317	MILLER PAINT CO	01/26/2015	1,256.91
201400319	OFFICE DEPOT INC ACCT#8011 073	01/26/2015	270.93
201400327	FERGUSON ENTERPRISES INC #3007	01/26/2015	1,542.29
201400328	GOSNEY MOTOR PARTS INC	01/26/2015	1,293.84
201400328	WASH FLORAL SERVICE INC	01/26/2015	504.04
201400328	WASH FLORAL SERVICE INC	01/26/2015	284.85
201400329	KING COUNTY DIRECTORS ASSN	01/26/2015	8,698.98
201400330	STERLING ATHLETICS	01/26/2015	410.24
201400331	MUSIC THEATRE INTERNATIONAL	01/26/2015	2,115.95
201400332	PIZZA TIME	01/26/2015	2,192.70
201400333	BRANDERS.COM INC	01/26/2015	3,740.91
201400334	IMAGE MASTERS INC	01/26/2015	1,808.50
201400335	EASTBAY INC	01/26/2015	3,402.44
201400336	CITY OF AUBURN UTILITIES	01/26/2015	41,278.84
201400337	EASTSIDE SAW & SALES INC	01/26/2015	81.12
201400341	AT & T	01/26/2015	154.49

Check Nbr	Vendor Name	Check Date	Check Amount
201400342	CENTURY LINK	01/26/2015	1,114.95
201400342	CENTURY LINK	01/26/2015	36,494.22
201400345	CEDAR GROVE ORGANICS RECYCLING	01/26/2015	3,029.10
201400346	CITY OF AUBURN UTILITIES	01/26/2015	7,950.26
201400347	REPUBLIC SERVICES #176	01/26/2015	3,223.70
201400348	VERIZON WIRELESS	01/26/2015	0.91
201400349	WASTE MANAGEMENT RECYCLE COMPA	01/26/2015	1,906.68
201400350	COSTCO	01/26/2015	695.82
201400351	MJB SCREENPRINT	01/26/2015	1,324.13
201400352	PACIFIC PUBLISHING COMPANY	01/26/2015	306.81
201400353	REXEL INC	01/26/2015	101.65
201400354	STANSELL GLASS INC	01/26/2015	314.66
201400355	STAPLES ADVANTAGE	01/26/2015	1,066.26
201400367	COASTWIDE LABORATORIES	01/26/2015	1,610.06
201400368	UNITED PARCEL SERVICE	01/26/2015	139.32

32 Wire Transfer Check(s) For a Total of

129,022.30

0	Manual	Checks For a Total of	0.00
32	Wire Transfer	Checks For a Total of	129,022.30
0	ACH	Checks For a Total of	0.00
0	Computer	Checks For a Total of	0.00
Total For 32	Manual, Wire Tran, ACH & Computer Checks		129,022.30
Less 0	Voided	Checks For a Total of	0.00
	Net Amount		129,022.30

F U N D S U M M A R Y

Fund	Description	Balance Sheet	Revenue	Expense	Total
10	General Fund	8,359.74	0.00	104,380.21	112,739.95
40	ASB Fund	-355.39	0.00	16,637.74	16,282.35

The following vouchers, as audited and certified by the Auditing Officer as required by RCW 42.24.080, and those expense reimbursement claims certified as required by RCW 42.24.090, are approved for payment. Those payments have been recorded on this listing which has been made available to the board.

As of January 26, 2015, the board, by a _____ vote, approves payments, totaling \$170,660.84. The payments are further identified in this document.

Total by Payment Type for Cash Account, AP Direct Dep Settlement Accou:
ACH Numbers 141501023 through 141501122, totaling \$170,660.84

Secretary _____	Board Member _____
Board Member _____	Board Member _____
Board Member _____	Board Member _____

Check Nbr	Vendor Name	Check Date	Check Amount
141501023	ACUNA, ANDREA LOUISE	01/26/2015	129.32
141501024	AMADO, SONIA	01/26/2015	37.97
141501025	AUBURN SCHOOL DIST REVOLVING F	01/26/2015	616.31
141501026	BACHELDER, PATRICIA A	01/26/2015	71.01
141501027	BARKER, CAROL JEAN	01/26/2015	6.75
141501028	BERG, BARBARA DIANE	01/26/2015	118.27
141501029	BLANSFIELD, CYNTHIA RENEE	01/26/2015	50.74
141501030	BOLEN, PAMELA M	01/26/2015	99.00
141501031	BORTON, SHARON KAY	01/26/2015	500.00
141501032	BOYD JR, LAWRENCE	01/26/2015	30.53
141501033	BROWN, KELLY	01/26/2015	249.98
141501034	BUCCI, TIFFANY JEAN	01/26/2015	2.02
141501035	BULSON, LAURIE JEAN	01/26/2015	84.64
141501036	BURKHALTER, ARLEEN JEAN	01/26/2015	51.05
141501037	BURT, TIFFANY ANN	01/26/2015	21.56
141501038	CAMPBELL-AIKENS, JANIS GAIL	01/26/2015	4.38
141501039	CAPITAN, KIMBERLY LEE	01/26/2015	50.00

Check Nbr	Vendor Name	Check Date	Check Amount
141501040	CHRISTIANSEN, STEPHEN L	01/26/2015	443.68
141501041	CLOUSER, JENNIFER LYNN	01/26/2015	3,000.00
141501042	CONNELLY, ERICKA ANN	01/26/2015	500.00
141501043	DANIEL, ERIC STUART	01/26/2015	67.09
141501044	DEGROOT, KAREN MARIE	01/26/2015	500.00
141501045	DEJONG, CATHERINE ANNE	01/26/2015	21.79
141501046	DUDLEY, THOMAS WAYNE	01/26/2015	18.03
141501047	DUNAWAY, EDDIE L	01/26/2015	67.80
141501048	FAWVER, RICHARD ALLEN	01/26/2015	60.03
141501049	FERRELL, LEON	01/26/2015	14.32
141501050	FLANDERS, MICHELLE ANN	01/26/2015	59.00
141501051	Vendor Continued Check	01/26/2015	0.00
141501052	FOOD SERVICES OF AMERICA **	01/26/2015	11,757.32
141501053	FOOD SERVICES OF AMERICA ***	01/26/2015	5.63
141501054	GIBSON-MYERS, ELIZABETH ANN	01/26/2015	1,000.00
141501055	GONZALES, DOUGLAS SCOTT	01/26/2015	214.37
141501056	HALL, ERIN LEE	01/26/2015	500.00
141501057	HARTLEY, HEATHER MARIE	01/26/2015	125.00
141501058	HOGG, ELAINE M	01/26/2015	12.77
141501059	JACKSON, SHAAARON D	01/26/2015	230.00
141501060	JORDAN, GARY D	01/26/2015	63.06
141501061	KIILSGAARD, LESLIE LOUISE	01/26/2015	141.03
141501062	KIM, DAN-BY ARAM	01/26/2015	500.00
141501063	KIM, MIRA	01/26/2015	12.09
141501064	KING, DENISE DAWN	01/26/2015	41.36

Check Nbr	Vendor Name	Check Date	Check Amount
141501065	KIRKPATRICK, NANCY LEE	01/26/2015	50.00
141501066	KOENIG, SALLY J	01/26/2015	127.50
141501067	LADAGE, ADAM LYNN	01/26/2015	500.00
141501068	LAM, TAN VAN	01/26/2015	10.47
141501069	LARSON, KATE MALLORY	01/26/2015	500.00
141501070	LASKEY, SAMANTHA MEHAFFEY	01/26/2015	17.86
141501071	LEITZKE, STACY JO	01/26/2015	28.09
141501072	LENIHAN, LAINE MARIE	01/26/2015	314.72
141501073	LEWIS, PAUL M	01/26/2015	16.39
141501074	LOPEZ, RICO M	01/26/2015	15.87
141501075	LUONG, JACOB	01/26/2015	500.00
141501076	MALONE, CORIN G	01/26/2015	70.73
141501077	MATTOX, TIFFANY SUZANNE	01/26/2015	127.99
141501078	MAYER, MARGARET S	01/26/2015	65.86
141501079	MILLER, TANA LYNN	01/26/2015	172.62
141501080	MILLS GOLDBERG, AMY L	01/26/2015	16.29
141501081	MITCHELL, CYNTHIA A	01/26/2015	42.95
141501082	NESPER, BRENNIA LOUISE	01/26/2015	46.31
141501083	NYBO, KELLEY ANDREA	01/26/2015	42.39
141501084	OLSON, JILL MARIE	01/26/2015	12.02
141501085	PARKS, PAMELA G	01/26/2015	90.00
141501086	POWELL, VICTORIA JOYCE	01/26/2015	50.00
141501087	RAGUZIN HOLLOMAN, VERONIKA	01/26/2015	76.00
141501088	RAMIREZ JR, FRANK J	01/26/2015	167.81
141501089	RUDOLPH, JEANNE MARIA	01/26/2015	50.00

Check Nbr	Vendor Name	Check Date	Check Amount
141501090	SAXON, JAN K	01/26/2015	69.27
141501091	SHU-MINUTOLI, KAREN	01/26/2015	17.36
141501092	SNYDER, CHERYL	01/26/2015	11.70
141501093	STRAND, DEBRA MARIE	01/26/2015	30.55
141501094	SWANSON, PENNI J	01/26/2015	7.84
141501095	THOMPSON, ALICIA JOY	01/26/2015	500.00
141501096	TURNER, MEGAN DENISE	01/26/2015	541.42
141501097	Vendor Continued Check	01/26/2015	0.00
141501098	US BANK CORP PAYMENT SYSTEMS P	01/26/2015	88,517.32
141501099	US BANK CORP PAYMENT SYSTEM TR	01/26/2015	1,649.70
141501100	US BANK CTE PCARDS	01/26/2015	11,643.60
141501101	WICKENS, JAMES C	01/26/2015	126.00
141501102	WILKINSON, LISA M	01/26/2015	357.50
141501103	TECHNOLOGY EXPRESS	01/26/2015	6,289.92
141501104	US BANK CORP PAYMENT SYSTEMS P	01/26/2015	8,377.44
141501105	AUBERT, DOUGLAS JAMES	01/26/2015	61.30
141501106	AUBURN SCHOOL DIST REVOLVING F	01/26/2015	100.00
141501107	AUBURN SENIOR HIGH IMPREST	01/26/2015	1,023.00
141501108	BOWLES, JERRY F	01/26/2015	99.60
141501109	CUGHAN, JOSEPH DANIEL	01/26/2015	184.40
141501110	FOOD SERVICES OF AMERICA	01/26/2015	2,662.70
141501111	PIZZA TIME	01/26/2015	1,089.60
141501112	RODRIGUEZ, JESSE ANN	01/26/2015	17.15
141501113	ROSHAU, MEGAN ELLEN	01/26/2015	67.61
141501114	ROWE, ALESHA MARIE	01/26/2015	17.86

Check Nbr	Vendor Name	Check Date	Check Amount
141501115	SCARLETT, ARDITH ELAINE	01/26/2015	125.00
141501116	STRAND, BRYCE JAMES	01/26/2015	125.00
141501117	SUMNER, GEORGE WILLIAM	01/26/2015	49.28
141501118	UHLENDORF, JANA J	01/26/2015	10.96
141501119	Vendor Continued Check	01/26/2015	0.00
141501120	US BANK CORP PAYMENT SYSTEMS P	01/26/2015	17,884.60
141501121	US BANK CORP PAYMENT SYSTEM TR	01/26/2015	4,311.38
141501122	WILKINSON, LISA M	01/26/2015	102.01

100 ACH

Check(s) For a Total of

170,660.84

0	Manual	Checks For a Total of	0.00
0	Wire Transfer	Checks For a Total of	0.00
100	ACH	Checks For a Total of	170,660.84
0	Computer	Checks For a Total of	0.00
Total For 100	Manual, Wire Tran, ACH & Computer Checks		170,660.84
Less 0	Voided	Checks For a Total of	0.00
	Net Amount		170,660.84

F U N D S U M M A R Y

Fund	Description	Balance Sheet	Revenue	Expense	Total
10	General Fund	566.29	0.00	127,495.74	128,062.03
20	Capital Projects	0.00	0.00	14,667.36	14,667.36
40	ASB Fund	-157.01	125.00	27,963.46	27,931.45

AUBURN SCHOOL DISTRICT NO. 408

FINANCIAL STATEMENTS
FOR
DECEMBER 2014

AUBURN SCHOOL DISTRICT NO. 408
MONTHLY FINANCIAL REPORTS
TABLE OF CONTENTS

- I. Combined Balance Sheet
 - A. Governmental Funds
 - B. Trust Funds and Account Groups
- II. Budget Status Reports
 - A. General Fund
 - B. Transportation Vehicle Fund
 - C. Capital Projects Fund
 - D. Debt Service Fund
 - E. ASB Fund
 - 1. High Schools
 - 2. Middle Schools
- III. Private Purpose Trust Fund Statement
- IV. NBN Employee Benefits Trust Fund Statement
- V. Local Grants

AUBURN SCHOOL DISTRICT NO. 408
BALANCE SHEETS - GOVERNMENTAL FUNDS
December 31, 2014

	GENERAL	TRANSPORT VEHICLE	CAPITAL PROJECTS	DEBT SERVICE	ASB
ASSETS					
Cash and cash equivalents	13,712,878	2,166,002	62,843,772	2,334,511	1,765,506
Restricted Cash	29,197	3,588	125,851	39,093	5,704
Property taxes receivable	875,646	-14	151,370	449,991	
Accounts receivable	298,081				0
Interest receivable	0	0	0	0	0
Due from other funds	0	0	0	0	0
Due from other governments	0		70,051		
Inventory of supplies	337,182				
Prepays	0				0
Total Assets	15,252,985	2,169,575	63,191,044	2,823,596	1,771,209
LIABILITIES and EQUITY					
Liabilities:					
Accounts payable	1,632,518		0		9,303
Estimated Unemployment Payable	26,506				
Due to other governments	12,691	1,553	54,476	16,978	2,477
Due to other funds	0		0		0
Deferred revenue	875,646	-14	157,315	449,991	0
Total Liabilities	2,547,361	1,539	211,791	466,969	11,780
Equity:					
Non Spendable Fund Bal--Inven	444,925				671
Restricted for Food Services	2,096,940				
Restricted from Bond Proceeds			39,505,849		
Restricted from Levy Proceeds			6,230,397		
Restricted from Impact Fees			660,751		
Restricted for Fund Purpose		1,415,645			1,758,758
Restricted to Debt Service				1,655,164	
Assigned to Contingencies	300,000				
Assigned to Other Purposes	1,800,000				
Assigned To Fund Purposes		752,392	16,582,256	701,463	
Unassigned Fund Balance	8,063,758				
Total Equity	12,705,623	2,168,037	62,979,253	2,356,627	1,759,430
Total Liabilities and Equity	15,252,985	2,169,575	63,191,044	2,823,596	1,771,209

AUBURN SCHOOL DISTRICT NO. 408
BALANCE SHEETS - TRUST FUNDS AND ACCOUNT GROUPS
December 31, 2014

TRUST FUNDS		ACCOUNT GROUPS	
PRIV PURP TRUST	NBN EMPLOY BENEFITS	GENERAL FIXED ASSETS	GENERAL LONG-TERM DEBT

ASSETS

Cash and cash equivalents	577,626	110,858		
Restricted Cash	2,740	802		
Due From Other Funds	0	0		
Accounts receivable				
Interest receivable	0	0		
Fixed assets			281,761,320	
Other debits:				
Amount available in Debt Service Fund				2,356,627
Amount to be provided for retirement of general long-term obligations				122,527,602
Total Assets	580,367	111,661	281,761,320	124,884,228

LIABILITIES and EQUITY

Liabilities:

Accounts Payable	712	3,858		
Compensated absences payable				2,764,228
Due to other governments	1,187	347		
Due To Other Funds		0		
General obligation bonds payable				122,120,000
Total Liabilities	1,899	4,205	0	124,884,228

Equity:

Investment in general fixed assets			281,761,320	
Fund balances:				
Assigned To Fund Purposes	578,468	107,455		
Total Equity	578,468	107,455	281,761,320	0
Total Liabilities and Equity	580,367	111,661	281,761,320	124,884,228

<p>Auburn School District No. 408</p> <p>General Fund Budget Status Summary</p>	
---	--

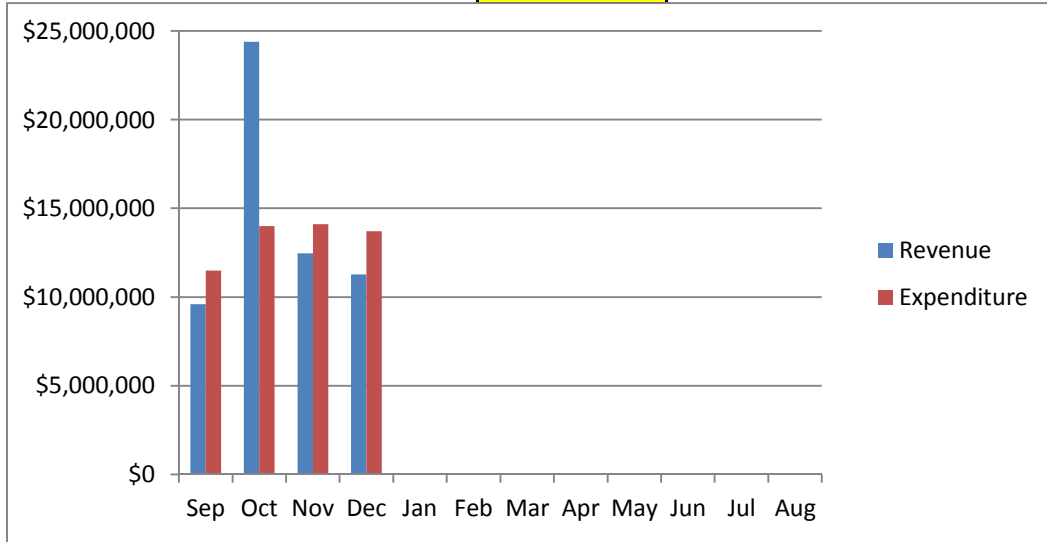
	REVENUE			EXPENDITURES			FUND BALANCE
Fiscal Year 2014 - 15	Average Cum %	Actual Cum %	Actual Monthly	Average Cum %	Actual Cum %**	Monthly Amount	Beginning 9,416,432
September	5.63%	5.63%	9,600,271	6.68%	11.23%	11,493,198	7,523,505
October	19.93%	19.93%	24,381,007	14.81%	18.99%	13,998,540	17,905,973
November	27.23%	26.57%	12,457,337	23.00%	26.78%	14,097,667	15,140,231
December	33.85%	33.18%	11,280,745	30.97%	34.44%	13,715,438	12,705,623
January							
February							
March							
April							
May							
June							
July							
August							
			Revenue			Expenditure	Fund Balance
Anticipated - First Budget			170,538,646			172,136,511	8,435,466
Actual - At Fiscal Year End							
** Includes encumbrances.							

	REVENUE			EXPENDITURES			FUND BALANCE
Fiscal Year 2013-14	Average Cum %	Actual Cum %	Actual Monthly	Average Cum %	Actual Cum %**	Monthly Amount	Beginning 10,133,329
September	6.76%	6.51%	9,950,137	11.19%	11.15%	11,113,769	8,969,697
October	19.63%	20.36%	21,159,285	19.66%	19.15%	13,247,446	16,881,536
November	26.73%	27.23%	10,494,071	27.00%	26.90%	12,563,614	14,811,993
December	34.26%	34.39%	10,933,571	34.53%	34.40%	12,617,333	13,128,231
January	41.53%	41.28%	10,526,689	42.31%	41.97%	12,539,519	11,115,401
February	48.89%	48.60%	11,182,251	50.04%	49.91%	12,981,238	9,316,414
March	56.54%	56.29%	11,749,451	57.80%	57.60%	12,820,932	8,244,933
April	70.37%	71.31%	22,945,138	66.38%	65.65%	13,411,868	17,778,203
May	78.49%	79.14%	11,965,259	74.16%	73.50%	13,119,004	16,624,458
June	83.94%	84.41%	8,057,108	81.77%	82.10%	13,808,972	10,872,594
July	91.49%	92.10%	11,749,445	89.63%	90.25%	13,713,359	8,908,680
August	100.07%	101.48%	14,319,827	97.25%	98.14%	14,002,912	9,225,640
			Revenue			Expenditure	Fund Balance
Anticipated - First Budget			152,776,040			158,891,993	4,808,633
Actual - At Fiscal Year End			155,029,778			155,939,966	9,416,432
** Includes encumbrances.							

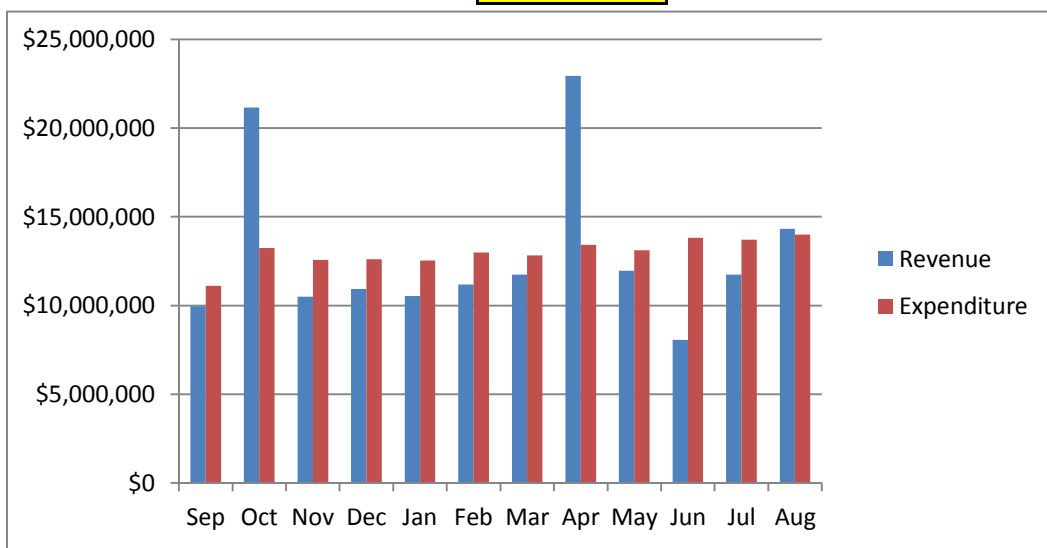
	REVENUE			EXPENDITURES			FUND BALANCE
Fiscal Year 2012-13	Average Cum %	Actual Cum %	Actual Monthly	Average Cum %	Actual Cum %**	Monthly Amount	Beginning 10,124,983
September	6.82%	6.42%	8,900,174	11.29%	11.34%	10,305,120	8,720,037
October	19.42%	20.17%	19,051,681	19.75%	19.60%	11,569,382	16,202,336
November	26.65%	27.71%	10,449,525	27.06%	27.23%	11,707,538	14,944,323
December	34.17%	34.95%	10,139,001	34.56%	34.82%	11,514,929	13,568,395
January	41.52%	41.78%	9,357,387	42.30%	42.71%	11,723,970	11,201,812
February	48.99%	48.59%	9,430,085	49.97%	50.23%	11,154,522	9,477,376
March	56.68%	56.00%	10,127,724	57.72%	58.12%	11,851,062	7,754,037
April	70.29%	70.42%	20,127,079	66.29%	65.91%	11,606,241	16,274,875
May	78.42%	79.73%	12,906,563	73.99%	74.22%	12,397,109	16,784,329
June	83.89%	84.80%	6,958,226	81.58%	82.21%	11,709,618	12,032,937
July	91.43%	92.10%	10,139,829	89.52%	90.51%	12,774,041	9,398,725
August	99.98%	101.04%	12,434,576	96.92%	97.78%	11,694,692	10,138,609
			Revenue			Expenditure	Fund Balance
Anticipated - First Budget			138,577,729			143,182,856	4,696,764
Actual - At Fiscal Year End			140,016,041			140,007,695	10,133,329
** Includes encumbrances.							

AUBURN SCHOOL DISTRICT No. 408 GENERAL FUND

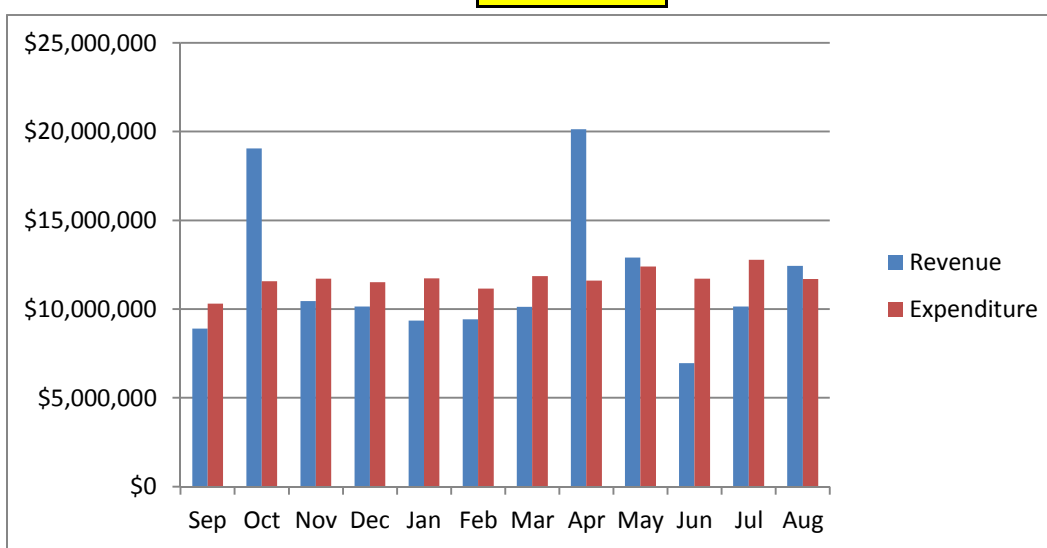
2014 - 15



2013-14



2012-13



Auburn School District No. 408
General Fund Budget Status
For the Month of December, 2014

	Annual Budget	Actual For Month	Total For Year	Encumbrance	Balance	Percent
TOTAL BEGINNING FUND BALANCE	\$ 10,033,331		9,416,432			
REVENUES AND OTHER FINANCING SOURCES						
1000 Local Taxes	33,794,082	215,328	14,913,228		18,880,854	44.13%
2000 Local Non-Tax	7,187,666	384,636	2,072,304		5,115,362	28.83%
3000 State, General Purpose	90,896,758	7,832,948	29,151,189		61,745,569	32.07%
4000 State, Special Purpose	22,611,696	2,023,586	7,186,203		15,425,493	31.78%
5000 Federal, General Purpose	8,383	-	-		8,383	0.00%
6000 Federal, Special Purpose	15,325,069	822,447	2,999,215		12,325,854	19.57%
7000 Revenues from Other District	612,292	-	266,967		345,325	43.60%
8000 Revenues from Other Agencies	102,700	-	-		102,700	0.00%
9000 Other Financing Sources	-	1,800	1,987		(1,987)	0.00%
Total Revenues & Other Finance Sources	170,538,646	11,280,745	56,591,094	-	113,947,552	33.18%
EXPENDITURES						
00 Regular Instruction	94,308,748	7,783,191	30,756,517	55,579,315	7,972,915	91.55%
10 Federal Stimulus	1,258,701	150,401	287,291	112,825	858,584	31.79%
20 Special Ed Instruction	19,665,078	1,674,998	6,486,452	12,655,220	523,406	97.34%
30 Vocational Instruction	6,860,021	539,176	2,003,123	3,872,285	984,613	85.65%
50&60 Compensatory Education	11,090,215	723,053	3,085,089	5,655,464	2,349,661	78.81%
70 Other Instructional Pgms	3,889,560	153,148	346,827	537,421	3,005,312	22.73%
80 Community Services	1,307,238	57,120	234,376	304,242	768,620	41.20%
90 Support Services	33,756,950	2,634,352	10,102,226	15,707,765	7,946,959	76.46%
Total Expenditures	172,136,511	13,715,438	53,301,902	94,424,538	24,410,071	85.82%
Excess Revenues/Other Financing Sources						
Over (under) Expend & Oth Financing Uses	(1,597,865)	(2,434,694)	3,289,192			
Total Ending Fund Balance	\$ 8,435,466		12,705,623			
Ending Fund Balance Accounts						
GL 821 Restricted for Carryovers						
GL 828 Restricted for Food Services	-		2,096,940			
GL 840 Nonspendable Fund Bal - Inv	-		444,925			
GL 875 Unrsrvd Dsgntd-Conting	-		300,000			
GL 888 Assigned to Other Purposes	-		1,800,000			
GL 890 UnRsrvd Undsgntd Fnd Bal	8,435,466		8,063,758			
Total Ending Fund Balance	\$ 8,435,466		\$ 12,705,623			

Auburn School District No. 408
Capital Projects Fund Budget Status
For the Month of December, 2014

	Annual Budget	Actual For Month	Total For Year	Encumbrance	Balance	Percent
TOTAL BEGINNING FUND BALANCE	\$ 74,402,644		\$ 69,083,979			
REVENUES AND OTHER FINANCING SOURCES						
1000 Local Taxes	6,261,416	31,931	2,058,943		4,202,473	32.88%
2000 Local Non-Tax	1,857,503	227,079	364,347		1,493,156	19.61%
3000 State, General Purpose		-	-		-	0.00%
4000 State, Special Purpose		-	-		-	0.00%
5000 Federal, General Purpose		-	-		-	0.00%
6000 Federal, Special Purpose		-	-		-	0.00%
7000 Revenues from Other District		-	-		-	0.00%
8000 Revenues from Other Agencies		-	-		-	0.00%
9000 Other Financing Sources	-	-	-		-	0.00%
Total Revenues & Other Financing Sources	8,118,919	259,010	2,423,290	-	5,695,629	29.85%
EXPENDITURES						
10 Sites	3,013,535	-	16,170	-	2,997,365	0.54%
20 Buildings	43,593,312	2,540,305	7,636,101	1,815,823	34,141,387	21.68%
30 Equipment	3,181,185	155,046	380,616	164,799	2,635,770	17.15%
40 Energy	-	8,209	495,129	323,345	(818,474)	0.00%
50 Sales & Lease Expenditures		-	-	-	-	0.00%
60 Bond Issuance Expenditures		-	-	-	-	0.00%
90 Debt		-	-	-	-	0.00%
Total Expenditures	49,788,032	2,703,559	8,528,017	2,303,967	38,956,049	21.76%
Excess Revenues/Other Financing Sources Over (under) Expend. & Oth Financing Uses	(41,669,113)	(2,444,550)	(6,104,726)			
Total Ending Fund Balance	\$ 32,733,531		\$ 62,979,253			
Ending Fund Balance Accounts						
GL 861 Restricted from Bond Proceeds	17,803,076		39,505,849			
GL 862 Restricted from Levy Proceeds	4,883,580		6,230,397			
GL 863 Restricted from State Proceeds	5,902,644					
GL 865 Restricted from Other Proceeds	(13,535)					
GL 866 Restricted from Impact Fees	(3,961,423)		660,751			
GL 889 Assigned to Fund Purpose	8,118,919		16,582,256			
GL 890 UnRsrvd Undsgntd Fnd Bal						
Total Ending Fund Balance	\$ 32,733,261		\$ 62,979,253			

Auburn School District No. 408
ASB Fund Budget Status
For the Month of December, 2014

	Annual Budget	Actual For Month	Total for Year	Encumb	Balance	Percent
TOTAL BEGINNING FUND BALANCE	\$ 1,090,784		\$ 1,428,831			
REVENUES AND OTHER FINANCING SOURCES						
1000 General Student Body	1,753,002	39,434	394,877		1,358,125	22.53%
2000 Athletics	243,220	22,054	115,250		127,970	47.38%
3000 Classes	254,953	2,970	40,211		214,742	15.77%
4000 Clubs	1,757,792	88,424	503,291		1,254,501	28.63%
6000 Private Moneys	102,460	1,252	11,822		90,638	11.54%
Total Revenues & Other Financing Sources	4,111,427	154,133	1,065,451	-	3,045,976	25.91%
EXPENDITURES						
1000 General Student Body	1,428,134	48,386	175,534	38,855	1,213,744	15.01%
2000 Athletics	329,221	29,259	122,409	25,023	181,789	44.78%
3000 Classes	264,273	1,304	21,356	18,614	224,303	15.12%
4000 Clubs	1,899,758	99,087	405,886	76,788	1,417,084	25.41%
6000 Private Moneys	103,916	6,302	9,668	-	94,248	9.30%
Total Expenditures	4,025,302	184,338	734,852	159,280	3,131,169	22.21%
Excess Revenues/Other Financing Sources Over (under) Expend. & Oth Financing Uses	86,125	(30,205)	330,598			
Total Ending Fund Balance	\$ 1,176,909		\$ 1,759,430			
Ending Fund Balance Accounts						
GL 819 Restricted for Fund Purpose	1,176,909		1,758,758			
GL840 Nonspendable-Inven/Prepaid			671			
GL 889 Assigned to Fund Purposes						
Total Ending Fund Balance	\$ 1,176,909		\$ 1,759,430			

Auburn School District No. 408
Debt Service Fund Budget Status
For the Month of December, 2014

	Annual Budget	Actual For Month	Total Year	Encumbrance	Balance	Percent
TOTAL BEGINNING FUND BALANCE	\$ 6,430,043		\$ 6,422,376			
REVENUES AND OTHER FINANCING SOURCES						
1000 Local Taxes	15,217,563	115,456	8,171,332		7,046,231	53.70%
2000 Local Non-Tax	48,100	5,347	11,487		36,613	23.88%
3000 State, General Purpose		-	-		-	0.00%
5000 Federal, General Purpose		-	-		-	0.00%
6000 Federal, Special Purpose		-	-		-	0.00%
9000 Other Financing Sources		-	-		-	0.00%
Total Revenues & Other Financing Sources	15,265,663	120,803	8,182,818		7,082,845	53.60%
EXPENDITURES						
Matured Bond Expenditures	8,795,000	8,795,000	8,795,000	-	-	100.00%
Interest on Bonds	6,808,036	3,453,568	3,453,568	-	3,354,469	50.73%
Interfund Loan Interest		-	-	-	-	0.00%
Bond Transfer Fees	100,000	-	-	-	100,000	0.00%
Arbitrage Rebate		-	-	-	-	0.00%
Underwriter's fees		-	-	-	-	0.00%
Total Expenditures	15,703,036	12,248,568	12,248,568	-	3,454,469	78.00%
Other Financing Uses		-	-			
Excess Revenues/Other Financing Sources Over (under) Expend. & Oth Financing Uses	(437,373)	(12,127,764)	(4,065,749)			
Total Ending Fund Balance	\$ 5,992,670		\$ 2,356,627			
Ending Fund Balance Accounts						
GL 810 Reserved For Other Items			-			
GL 830 Reserved For Debt Service	6,430,043		1,655,164			
GL 889 Assigned to Fund Purposes	(437,373)		701,463			
GL 890 UnRsrvd Undsgntd Fnd Bal			-			
Total Ending Fund Balance	\$ 5,992,670		\$ 2,356,627			

Auburn School District No. 408
Transportation Vehicle Fund Budget Status
For the Month of December, 2014

	Annual Budget	Actual For Month	Total For Year	Encumb	Balance	Percent
TOTAL BEGINNING FUND BALANCE	\$ 2,148,615		\$ 2,151,834			
REVENUES AND OTHER FINANCING SOURCES						
1000 Local Taxes	-	-	-		-	0.00%
2000 Local Non-Tax	10,768	817	2,631		8,137	24.43%
3000 State, General Purpose		-	-		-	0.00%
4000 State, Special Purpose	723,485	-	-		723,485	0.00%
5000 Federal, General Purpose		-	-		-	0.00%
8000 Revenues from Other Agencies		-	-		-	0.00%
9000 Others Financing Sources		-	13,573		(13,573)	0.00%
Total Revenues & Other Financing Sources	734,253	817	16,203	-	718,050	2.21%
EXPENDITURES						
Type 30 Equipment	2,077,290	-	-	-	2,077,290	0.00%
Total Expenditures	2,077,290	-	-	-	2,077,290	0.00%
Excess Revenues/Other Financing Sources Over (under) Expend & Oth Financing Uses	(1,343,037)	817	16,203			
Total Ending Fund Balance	\$ 805,578		\$ 2,168,037			
Ending Fund Balance Accounts						
GL 819 Restricted for Fund Purposes	2,148,615		1,415,645			
GL 889 Assigned to Special Fund Purposes	(2,147,747)		752,392			
GL 890 UnRsrvd Undsgntd Fnd Bal			-			
Total Ending Fund Balance	\$ 868		\$ 2,168,037			
Reconciling Difference Per Reprot	804,710					

AUBURN SCHOOL DISTRICT No. 408

ASB FUND

DECEMBER, 2014

HIGH SCHOOLS

	Auburn High	Auburn Mountainview	Auburn Riverside	West Auburn	TOTAL
	401	405	408	504	
BEGINNING BALANCE	\$ 218,605.95	\$ 268,672.33	\$ 354,629.62	\$ 9,036.77	\$ 850,944.67
REVENUES	\$ 268,474.59	\$ 260,980.11	\$ 286,681.14	\$ 894.82	\$ 817,030.66
EXPENDITURES					
General	\$ 33,304.24	\$ 47,017.26	\$ 22,350.38	\$ 50.88	\$ 102,722.76
Athletics	49,886.77	20,732.98	44,168.84	-	114,788.59
Classes	7,409.54	4,756.30	3,278.35	-	15,444.19
Clubs	123,256.77	117,855.09	125,544.39	-	366,656.25
Private Monies	130.70	2,509.97	4,237.03	-	6,877.70
TOTAL EXPENDITURES	\$ 213,988.02	\$ 192,871.60	\$ 199,578.99	\$ 50.88	\$ 606,489.49
TRANSFERS					
General	\$ 21,580.64	\$ 25,416.41	\$ 13,558.07	\$ -	\$ 60,555.12
Athletics	(13,620.98)	(15,091.12)	(20,548.66)	-	(49,260.76)
Classes	(1,115.00)	(202.50)	10,269.91	-	8,952.41
Clubs	(6,844.66)	(10,122.79)	(3,113.32)	-	(20,080.77)
Private Monies		-	(166.00)	-	(166.00)
TOTAL TRANSFERS	\$ -	\$ -	\$ -	\$ -	\$ 0.00
OVER/ (UNDER)	\$ 54,486.57	\$ 68,108.51	\$ 87,102.15	\$ 843.94	\$ 210,541.17
ENDING BALANCE	\$ 273,092.52	\$ 336,780.84	\$ 441,731.77	\$ 9,880.71	\$ 1,061,485.84

AUBURN SCHOOL DISTRICT No. 408

ASB FUND

DECEMBER, 2014

MIDDLE SCHOOLS

	Cascade	Mt. Baker	Rainier	Olympic	TOTAL
	202	207	206	203	
BEGINNING BALANCE	\$ 70,318.09	\$ 55,379.27	\$ 103,268.24	\$ 102,871.70	\$ 331,837.30
REVENUES	\$ 34,848.33	\$ 46,379.35	\$ 48,698.85	\$ 23,819.66	\$ 153,746.19
EXPENDITURES					
General	\$ 11,561.30	\$ 3,265.12	\$ 6,589.46	\$ 5,116.67	\$ 26,532.55
Athletics	1,431.81	2,010.47	1,138.28	3,039.46	7,620.02
Classes	-	65.00	-	-	65.00
Clubs	7,747.03	18,788.53	10,519.79	2,174.15	39,229.50
Private Monies	575.12	2,214.96	-	-	2,790.08
TOTAL EXPENDITURES	\$ 21,315.26	\$ 26,344.08	\$ 18,247.53	\$ 10,330.28	\$ 76,237.15
TRANSFERS					
General	\$ 7,422.78	\$ 15,148.98	\$ 6,500.00	\$ 719.00	\$ 29,790.76
Athletics	(6,000.00)	(7,468.77)	(6,400.00)	(719.00)	(20,587.77)
Classes	1,908.63	(2,705.14)	-	-	(796.51)
Clubs	(3,331.41)	(4,975.07)	(100.00)	-	(8,406.48)
Private Monies	-	-	-	-	-
TOTAL TRANSFERS	\$ -	0.00	0.00	\$ -	\$ (0.00)
OVER/ (UNDER)	\$ 13,533.07	\$ 20,035.27	\$ 30,451.32	\$ 13,489.38	\$ 77,509.04
ENDING BALANCE	\$ 83,851.16	\$ 75,414.54	\$ 133,719.56	\$ 116,361.08	\$ 409,346.34

AUBURN SCHOOL DISTRICT NO. 408
PRIVATE PURPOSE TRUST FUND STATEMENT
December 31, 2014

REVENUES:

InvestED	\$ 16,569
----------	-----------

Scholarship Donations:

6003 Daan Ansingh	1,000
6007 Pat Kuhlman	1,000
6065 ARHS Counseling	752
6103 Linda Cowan	100
6107 AHS Hanan	983
6501 Invest Ed- AHS	6,253
6502 Invest Ed - Casc	1,529
6503 Invest Ed - Oly	1,529
6505 Invest Ed - AMHS	1,851
6520 Invest Ed - RAI	650
6521 Invest Ed - WAHS	681
6527 Invest Ed - MTB	1,126
6528 Invest Ed - ARHS	2,950
7003 Pioneer Shoe Fund	1,100
7004 ARHS Win Wishes	772
7005 AHS Booster Club	5,175
7006 Native Am Students	
7007 Thunderbird Fund	
7008 AMHS Booster Club	
7009 Chinook Shoe Fund	
7010 Food Bank	

Total Scholarship Donations	27,449
-----------------------------	--------

Interest	735
Total Revenues	28,185

EXPENDITURES:

InvestED	9,991
----------	-------

6016 Auburn Community	375
6501 Invest Ed- AHS	4,725
6502 Invest Ed - Casc	716
6503 Invest Ed - Oly	944
6505 Invest Ed - AMHS	595
6520 Invest Ed - RAI	248
6527 Invest Ed - MTB	205
6528 Invest Ed - ARHS	2,558
7004 ARHS Win Wishes	712
7005 AHS Booster Club	680
7009 Chinook Shoe Fund	261

Total Expenditures	12,019
--------------------	--------

Excess of Revenue over (under) Expenditure	16,166
--	--------

Fund Balance - Beginning of the Year	562,302
--------------------------------------	---------

Fund Balance - Year to Date	\$ 578,468
-----------------------------	------------

AUBURN SCHOOL DISTRICT NO 408
NBN Employee Benefits Trust Fund Statement
December 31, 2014

ADDITIONS:

Contributions from Plan Members	\$ 95,151.00
Investment Earnings	<u>79.47</u>
Total Additions	<u>95,230.47</u>

DEDUCTIONS:

Benefits Claims	91,937.24
State Program Fees	<u>-</u>
Total Deductions	<u>91,937.24</u>

NET DEDUCTIONS	3,293.23
-----------------------	----------

Net Assets at Beginning of Year	<u>104,161.93</u>
---------------------------------	-------------------

Net Assets Year To Date	<u><u>\$ 107,455.16</u></u>
-------------------------	-----------------------------

AUBURN SCHOOL DISTRICT NO. 408
Local Grants Received in December, 2014

Donor	Recipient	Amount
Auburn Council of PTSA	ASD	\$1,500.00
Auburn Noon Lions	ASD	\$1,600.00
Dorian Studios	Lake View	\$24.77
Cori Lanman	Lea Hill	\$25.00
Victorino Cruz	Lea Hill	\$50.00
Alexis Singletary	Lea Hill	\$400.00
BECU Match	Lea Hill	\$4,200.00
Lori Poore	Lea Hill	\$70.00
Megan Dahle	Lea Hill	\$10.00
Melanie Hunt	Lea Hill	\$10.00
Gifts & Donations	Ilalko	\$148.15
Dorian Studios	Hazlewood	\$51.92
Gifts & Donations	Hazlewood	\$116.66
The Outlet	Lakeland Hills	\$1,000.00
Dorian Studios	Lakeland Hills	\$44.11
College Board	ARHS	\$500.00
Muckleshoot Tribe	ASD	\$110,231.00
Total		<u><u>\$119,981.61</u></u>

1. Approval of Minutes

Recommendation: That the minutes be approved.

Recommendation: That the above-mentioned policy be accepted for first reading with second reading and adoption scheduled for Monday, February 9.

4. Executive Session

ELECTRONIC RESOURCES (Revised 1-14-15)

The Auburn Board of Directors recognizes that an effective public education system develops students who are globally aware, civically engaged, and capable of managing their lives and careers. The board also believes that students need to be proficient **and safe** users of information, media, and technology to succeed in a digital world.

Therefore, the Auburn district will use electronic resources as a powerful and compelling means for students to learn core subjects and applied skills in relevant and rigorous ways. It is the district's goal to provide students with rich and ample opportunities to use technology for important purposes in schools just as individuals in workplaces and other real-life settings **use these tools**. The district's technology will enable educators and students to communicate, learn, share, collaborate and create; to think and solve problems; to manage their work; and to take ownership of their lives.

To help ensure student safety and citizenship in online activities, all students will be educated about appropriate behavior, including interacting with other individuals on social networking websites and in chat rooms, and cyber-bullying awareness and response.

The board directs the superintendent or designee to create strong electronic educational systems that support innovative teaching and learning, to provide appropriate staff development opportunities and to develop procedures to support this policy.

Cross References:	Board Policy 2020	Curriculum Development and Adoption of Instructional Materials
	Board Policy 2025	Copyright Compliance
	Board Policy 3241	Classroom Management, Corrective Actions or Punishment
	Board Policy 4400	Election Activities
	Board Policy 5281	Disciplinary Action and Discharge
	Board Policy 3207	Harassment, Intimidation and Bullying
Legal Reference:	Board Policy 4040	Public Access to District Records
	Board Policy 3231	Student Records
	18 USC §§ 2510-2522	Electronic Communication Privacy Act
	Pub. L. No. 110-385	Protecting Children in the 21st Century Act
Management Resources:	<i>Policy News, Feb 2012</i>	
	<i>Policy News</i> , June 2008	Electronic Resources
	<i>Policy News</i> , June 2001	Congress Requires Internet Blocking at School
	<i>Policy News</i> , August 1998	Permission required to review e-mail