

2024-2025

REGISTRATION

Graduation Requirements + Class Selections

ARHS COUNSELORS



Mr. Moon

A - Da



Mrs. Holloman

Db - H



Mr. Mead

I - Mi



Dr. Polley

Mj - R



Ms. Ban

S - Z



Mrs. Watson

College/Career

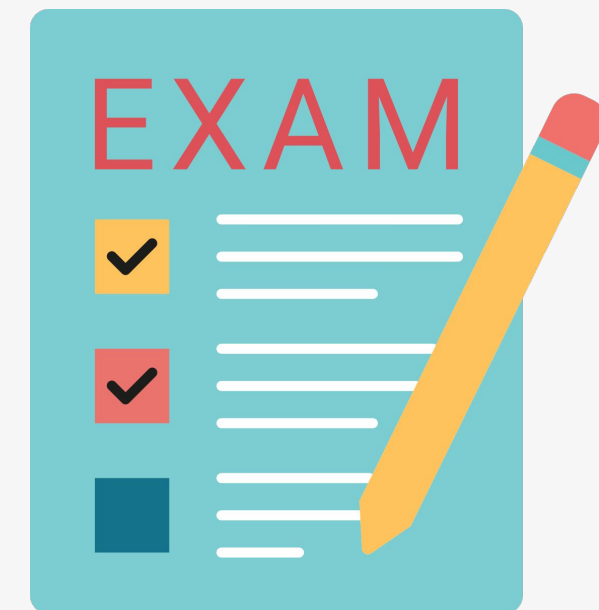
GRADUATION REQUIREMENTS



EARN 24
CREDITS



COMPLETE
HSBP



GRADUATION
PATHWAY

CREDIT REQUIREMENTS

- **4.0 LANGUAGE ARTS**

- **3.0 MATH**

- 1.0 ALGEBRA
- 1.0 GEOMETRY
- 1.0 ADV. ALG/TRIG or ALT. MATH

- **3.0 SCIENCE**

- 2.0 LAB
- 1.0 LAB or NON-LAB

- **3.0 SOCIAL STUDIES**

- 0.5 CWH
- 1.0 US HISTORY
- 0.5 CIVICS
- 1.0 SOCIAL STUDIES ELECTIVE

- **1.0 CTE**

- **0.5 HEALTH**

- **1.5 PE**

- **2.0 FINE ARTS**

- **2.0 WORLD LANGUAGE**

- **4.0 ELECTIVES**

24 CREDITS TOTAL

BOX PAGE

Class of 2021 and Beyond Graduation Requirements (24 Credit Minimum)

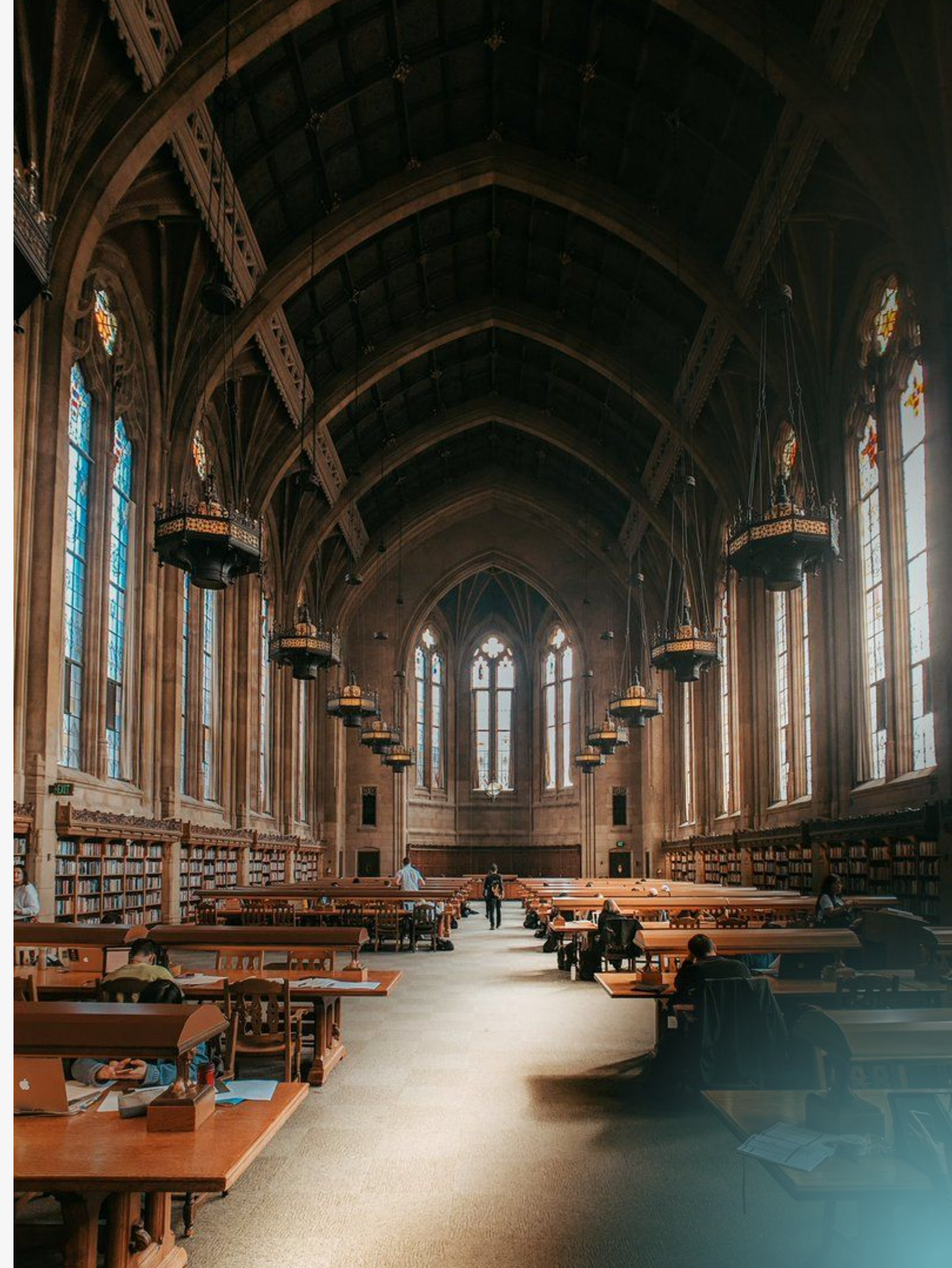
English (4)								
Math (3)					Alg. II or Alternate	Alg. II or Alternate	Requires parent permission to take an alternate 3rd credit	
Science (3)	Lab	Lab	Lab	Lab	Non-lab	Non-lab		
Social Studies (3)	CWH	US	US	Civics	Elective	Elective	WA	
CTE (1)			If CTE is used as a cross credit, 24 credits must still be obtained-credits cant' be counted twice.					
Health/PE (2)	Health	PE	PE	PE				
Art and Art or PP (2)	Art	Art	Art or PP	Art or PP				
World Language or PP (2)	World Lang. or PP	World Lang. or PP	World Lang. or PP	World Lang. or PP	Requires Parent permission to replace World Language credits with HSBP courses			
Electives (4)								

4 YEAR UNIVERSITY ADMISSIONS REQUIREMENTS

(CADRS)

- ★ 4 years ELA
- ★ 3-4 years MATH
- ★ 3 years SOCIAL STUDIES
- ★ 3-4 years SCIENCE
 - may require Chemistry and/or Physics
- ★ 2 years WORLD LANGUAGE
- ★ 1-2 year FINE ARTS

PLEASE RESEARCH UNIVERSITY REQUIREMENTS!
REQS MAY VARY!



State Assessment

Smarter Balance Assessment

- ELA = 2548
- MATH = 2595

SAT / ACT

Passing SAT Score:

- ELA = 410
- MATH = 430

ASVAB

Military Entrance Exam

- Passing Score = 31

GRADUATION PATHWAY

AP CLASSES

- Earn a C+ or higher in AP ELA and AP Math
- Take ELA and MATH AP Exams and score 3 or above

Running Start

Running Start

- Take/Pass ELA and MATH at the college

CTE SEQUENCE

Complete 2.0 or more CTE credits in the same CTE program area

HIGH SCHOOL & BEYOND PLAN

Students MUST complete their HSBP and will receive 0.5 elective credits!



ABOUT THE STUDENT



PERSONALITY STYLE

Creator / Artistic

Persuader / Enterprising

Organizer / Conventional



LEARNING STYLE

Multi-Method Learner



LESSONS COMPLETE

1 of 12

COURSE CATALOG



or Google “Auburn School District Course Catalog”

11TH GRADE ELA OPTIONS

* NCAA limitations

- **American Literature**
Students will read and discuss a variety of works in American Literature from past classics to contemporary works and examine the major periods, movements, and trends in American literary history and the influence of each on 20th century literature.
- **AP Language**
This course will provide students, especially those who are university bound or interested in AP English, with an intensive study of primarily nonfiction. Students should be willing to actively engage in the demands of a college-level course.
(Suggested: HLA10)
- **AP Literature**
This course emphasizes analytical and interpretive written responses to recognized fictional literary works of merit. Students should be willing to actively engage in the demands of a college-level course.
(Suggested: HLA10)
- **AP Seminar***
AP Seminar is a foundational course that engages students in cross-curricular conversations that explore the complexities of academic and real-world topics and issues by analyzing divergent perspectives. (Prerequisite: AP Lang)

12TH GRADE AP ELA OPTIONS

* NCAA limitations

● **AP Language**

This course will provide students, especially those who are university bound or interested in AP English, with an intensive study of primarily nonfiction. Students should be willing to actively engage in the demands of a college-level course.

(Suggested: HLA10)

● **AP Literature**

This course emphasizes analytical and interpretive written responses to recognized fictional literary works of merit. Students should be willing to actively engage in the demands of a college-level course.

(Suggested: HLA10)

● **AP Seminar***

AP Seminar is a foundational course that engages students in cross-curricular conversations that explore the complexities of academic and real-world topics and issues by analyzing divergent perspectives. (Prerequisite: AP Lang)

12TH GRADE ELA OPTIONS

* NCAA limitations

● College Writing

College writing is designed for students who plan to attend a two-or four-year college and who want to learn how to write at the college level

● Creative Writing

Students express themselves creatively in a variety of forms. Students are required to write every day, in class and at home, be willing to share written work, and read assigned literary examples.

● Communicative Arts *

In this course, students will learn the skills to become media literate and more informed consumers of music, magazines, advertising, radio, television, and movies.

● Sports Literature

Students enrolled in Sports Lit will engage in reading and writing about a broad range of sports and athletes who, at all levels of competition, capture our imagination.

12TH GRADE ELA OPTIONS

*** NCAA limitations**



Senior Literature

Through close reading of literature and literary non-fiction, students apply strategies to discover meaning in texts from a variety of genres.



Outdoor Literature

Students will dive into the outdoors and learn how to safely and responsibly connect with the wilderness around them through reading, writing, and hands on experience.



Societies of the Future

This course examines the roots and development of science fiction through short stories, novels, and films.

Please have 2 alternate English classes!

10TH GRADE ELA OPTIONS

● **LA 10**

This class is an integrated study of literature and writing that builds important skills in thinking, reading, speaking, listening, and viewing. Focus will be directed to the thinking skills of point of view, finding evidence, and problem solving.

● **LA 10 HONORS**

The purpose of this pre-AP English class will provide a more challenging approach and accelerated curriculum for academically talented sophomores. Students will work with literature and writing through the higher level thinking skills of analysis, synthesis, and evaluation.

● **AP Language**

This course will provide students, especially those who are university bound or interested in AP English, with an intensive study of primarily nonfiction. Students should be willing to actively engage in the demands of a college-level course.

(Suggested: HLA10)

● **AP Literature**

This course emphasizes analytical and interpretive written responses to recognized fictional literary works of merit. Students should be willing to actively engage in the demands of a college-level course.

(Suggested: HLA10)

Journalism

Students will learn journalistic writing skills necessary to write news and sports stories, features, editorials, and reviews. (May satisfy one semester of ELA 11 or 12)

Newspaper

Students will produce the student newspaper. Students will research and write in-depth stories for each publication and then spend three to four days doing layout for each issue. (Prerequisite: A or B in Journalistic Writing) (May satisfy one semester of ELA 12)

Debate **

This course introduces students to the art and skill of public speaking and debate. Students participate in mandatory debate tournaments. (May satisfy one semester of English credit during grades 10 or 11 AND one semester of ELA 12). Can also be taken as a college in the high school class - Please see Mr. Moore for more details.

**** NCAA Limitations**

ELA
ELECTIVES

- **Global Issues**
- **Psychology 1/2**
- **AP Psychology** (full year)
- **AP African American Studies** (full year)
- **AP European History** (full year)
- **Economics**
- **Sociology**
- **Multicultural Studies**
- **WA State History**

SOCIAL STUDIES ELECTIVES

Things to think about!

- **Running Start**
- **Shared Programs**
(auto, welding, JROTC, gaming)
- **Missing graduation requirements**
- **NCAA/NAIA requirements**

NCAA Requirements

- **GPA of 2.3 or higher**

- This GPA is calculated for only **CORE ACADEMIC** courses for 9th-12th grade.

Core Units Required for NCAA Certification

	16 DII	16 DI
English Core	3 years	4 years
Math Core	* 2 years	* 3 years
Science Core	2 years	2 years
Social Studies Core	2 years	2 years
English, Math, or Science	3 years	1 year
Additional Core	4 years	4 years

- *Division I certification requires 1 year of Algebra and 1 year of Geometry (or a course for which Geometry is a prerequisite). Foundations Mathematics does not count.*

JUNIOR YEAR CLASSES

American Literature

or AP ELA options

Math

Depending on what you're in now:

- Geometry 1 & 2
- Adv. Alg/Trig 1 & 2
- Cross Credit for Math (see course catalog)

Science

Lab or Non-Lab Science

US History 1 & 2

or AP US History 1 & 2

2 Electives

Things to consider:

- Credits
- CTE Pathway
- Personal Pathway
- College Admissions Requirements

PICK ALTERNATIVES!
or a counselor will pick for you

SENIOR YEAR CLASSES

Senior English - pick 2

- Pick 2 alternates for Senior English

Math

Depending on what you're in now:

- Geometry 1 & 2
- Adv. Alg/Trig 1 & 2
- Cross Credit for Math (see course catalog)

Science

Lab or Non-Lab Science

Civics (or AP Gov.) + Social Studies Elective

2 Electives

Things to consider:

- Credits
- CTE Pathway
- Personal Pathway
- College Admissions Requirements

PICK ALTERNATIVES!
or a counselor will pick for you

SOPHOMORE YEAR CLASSES

LA 10

or other ELA options

Math

Depending on what you're in now:

- Geometry 1 & 2
- Adv. Alg/Trig 1 & 2
- Cross Credit for Math (see course catalog)

Science

Lab or Non-Lab Science

Health and Social Studies

2 Electives

Things to consider:

- Credits
- CTE Pathway
- Personal Pathway
- College Admissions Requirements

PICK ALTERNATIVES!
or a counselor will pick for you

RUNNING START

Please fill out the Google Form! This form indicates you are interested in doing Running Start.

You must complete this form by March 31.



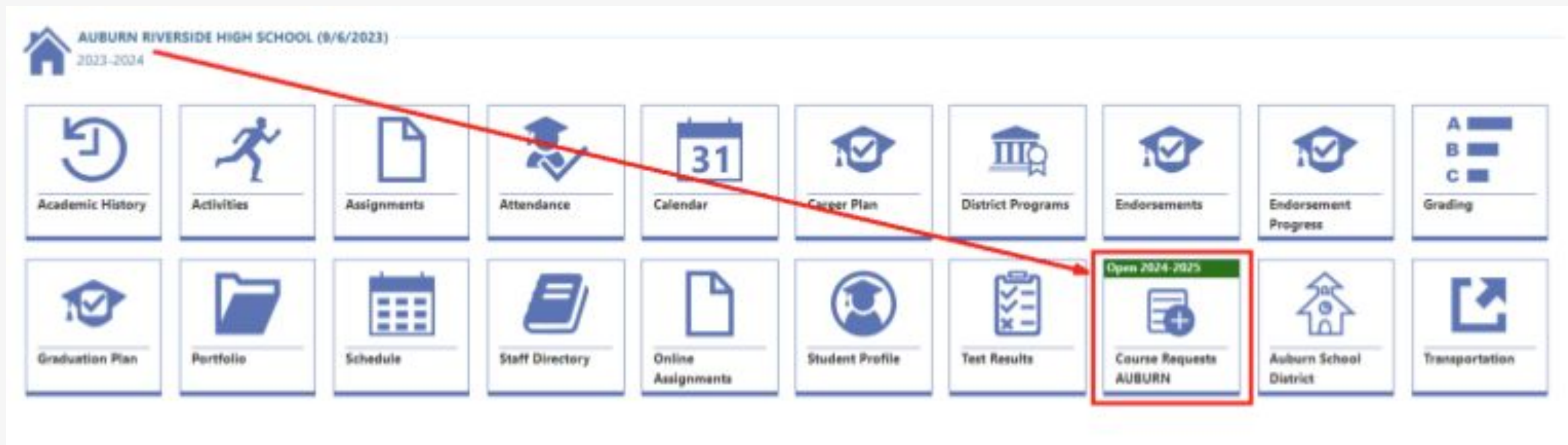


RUNNING START

Register for all 12 classes for next year at ARHS!

Counselors can adjust later.

COURSE REQUESTS



**Counselors will be back to assist in entering classes in
Skyward!**

YOU NEED YOUR SKYWARD LOGIN INFO!

BOX PAGE

Class of 2021 and Beyond Graduation Requirements (24 Credit Minimum)

English (4)								
Math (3)					Alg. II or Alternate	Alg. II or Alternate	Requires parent permission to take an alternate 3rd credit	
Science (3)	Lab	Lab	Lab	Lab	Non-lab	Non-lab		
Social Studies (3)	CWH	US	US	Civics	Elective	Elective	WA	
CTE (1)			If CTE is used as a cross credit, 24 credits must still be obtained-credits cant' be counted twice.					
Health/PE (2)	Health	PE	PE	PE				
Art and Art or PP (2)	Art	Art	Art or PP	Art or PP				
World Language or PP (2)	World Lang. or PP	World Lang. or PP	World Lang. or PP	World Lang. or PP	Requires Parent permission to replace World Language credits with HSBP courses			
Electives (4)								

THANK YOU!

QUESTIONS?